

Tiny shoots

Kate Heppell shows you how to create THE most gorgeous knitted tunic this issue using British Bluefaced Leicester wool



BY KATE
HEPPELL

MATERIALS

- ♥ Eden Cottage Yarns BFL Sock 155g (185g, 215g, 230g, 245g, 265g, 290g, 310g) in Bluebell
- ♥ 4-ply; 400m per 100g skein; 100% British Bluefaced Leicester wool
- ♥ £13 per skein from www.edencottageyarns.co.uk

TOOLS

- ♥ 3.75mm circular, 60cm
- ♥ 4 stitch markers
- ♥ stitch holder or waste yarn

TENSION

- ♥ 18sts x 30rows = 10cm measured over St st

SIZE

- ♥ S [M, L, XL, 2X, 3X, 4X, 5X]
- ♥ see schematic on page 17 for finished measurements

SIMPLY MAKE FRONT

Cast on 64 (78, 92, 92, 92, 92, 92) sts.
Knit 4 rows.

SMALL & MEDIUM SIZES ONLY

Work Rows 13-28 of Chart A, then Rows 1-10 of Chart B.

ALL OTHER SIZES

Work Rows 1-28 of Chart A, then Rows 1-10 of Chart B.

Next Row (RS): [K10, m1] 6 (7, 9, 9, 9, 9, 9) times, k to end. *70 (85, 101, 101, 101, 101, 101) sts*

****Work even in St st until piece measures 16 (17, 18.5, 19, 20.5, 21, 22, 22.5) cm from cast-on edge. Remember to compensate for how much your piece will grow during blocking, finishing after a RS row.**

Next Row (WS): P17 (21, 25, 25, 25, 25, 25, 25), pm, p 36 (43, 51, 51, 51, 51, 51, 51), pm, p to end.

Armhole shaping

Cast on 2 sts at beg of next 4 (4, 4, 4, 2, 2, 2, 2) rows.

Cast on 3 sts at beg of next 0 (0, 0, 2, 2, 2, 2, 2) rows.

Cast on 4 sts at beg of next 0 (0, 0, 0, 2, 4, 4, 4) rows.

Cast on 5 sts at beg of next 0 (0, 0, 0, 0, 0, 2, 4) rows. ******

Place these 78 (93, 109, 115, 119, 127, 137, 147) sts aside on waste yarn or stitch holder.

BACK

Cast on 70 (85, 101, 101, 101, 101, 101, 101) sts.

Knit 4 rows.

Work as for front from ****** to ******

JOIN BACK AND FRONT

Next Row (RS, joining row): Knit across all sts on needle, knit across all sts on waste yarn or stitch holder, join to work in the rnd. *156 (186, 218, 230, 238, 254, 274, 294) sts*

The remainder of the body is worked in the rnd.

BODY

*******Knit 30 rnds.

Next Row: *K to marker, m1, sm, k1, m1, k to 1 st before marker, m1, k1, sm, m1; rep from * to end. *8 sts incl****

Rep from ******* to ******* twice more. *180 (210, 242, 254, 262, 278, 298, 318) sts*

Continue to work even in St st until work reaches 0.25cm less than desired length, remembering to compensate for blocking. Note that the yarn requirements are based on a measurement of 40cm from underarm to bottom hem.

Next Row: Purl.

Next Row: Knit.

Next Row: Purl.

Cast off.

SLEEVES (MAKE 2)

Cast on 52 (56, 60, 68, 78, 82, 90, 96) sts. Join to work in the rnd, being careful not to twist.

Rnd 1: Knit.

Rnd 2: Purl.

Rnd 3: Knit.

Rnd 4: Purl.

Rnd 5: Knit.

Continue working in St st (knit every rnd) until work measures 5cm from cast-on edge.

After this point, you will work back and forth in rows rather than in rnds.

Armhole shaping

Cast off 5 sts at beg of next 0 (0, 0, 0, 0, 0, 2, 4) rows.

Cast off 4 sts at beg of next 0 (0, 0, 0, 2, 4, 4, 4) rows.

Cast off 3 sts at beg of next 0 (0, 0, 2, 2, 2, 2) rows.

Cast off 2 sts at beg of next 4 (4, 4, 4, 2, 2, 2) rows.

44 (48, 52, 54, 60, 56, 54, 50) sts rem.

Shape cap

Work 10 (10, 10, 12, 10, 10, 10, 16) rows even in St st.

Cast off 1 st at beg of next 12 (14, 8, 8, 10, 6, 12, 10) rows.

Cast off 2 sts at beg of next 4 (4, 6, 6, 6, 6, 4, 2) rows.

Cast off 3 sts at beg of next 0 (0, 2, 2, 2, 0, 0) rows.

Cast off 6 sts at beg of next 2 rows.

Cast off final 12 (14, 14, 16, 20, 20, 22, 24) sts.

Finishing: Weave in ends and block pieces to measurements given in schematic.

Stitch together the shoulders (6cm each side) using mattress stitch, leaving a wide slash neck opening. Set in sleeves.

CHART A

Row 1 (RS): K1, k2tog, * yo, k1, k2tog, yo, k3, [yo, ssk, k1] twice, k2tog; rep from * to last 6 sts yo, k1, k2tog, yo, k2.

Row 2 and all WS rows to Row 28: Purl.

Row 3: K2tog, yo, * k1, k2tog, yo, k5, yo, ssk, k1, yo, cdd, yo; rep from * to last 6 sts k1, k2tog, yo, k3.

Row 5: K2, * [k2tog, yo, k1] twice, yo, ssk, k1, yo, ssk, k3; rep from * to last 6 sts [k2tog, yo, k1] twice.

Row 7: K1, k2tog, * yo, k1, k2tog, yo, k3, [yo, ssk, k1] twice, k2tog; rep from * to last 6 sts yo, k1, k2tog, yo, k2.

Row 9: K2tog, yo, * k1, k2tog, yo, k5, yo, ssk, k1, yo, cdd, yo; rep from * to last 6 sts k1, k2tog, yo, k3.

You can work the lace section either from the charts or the written instructions

Chart A

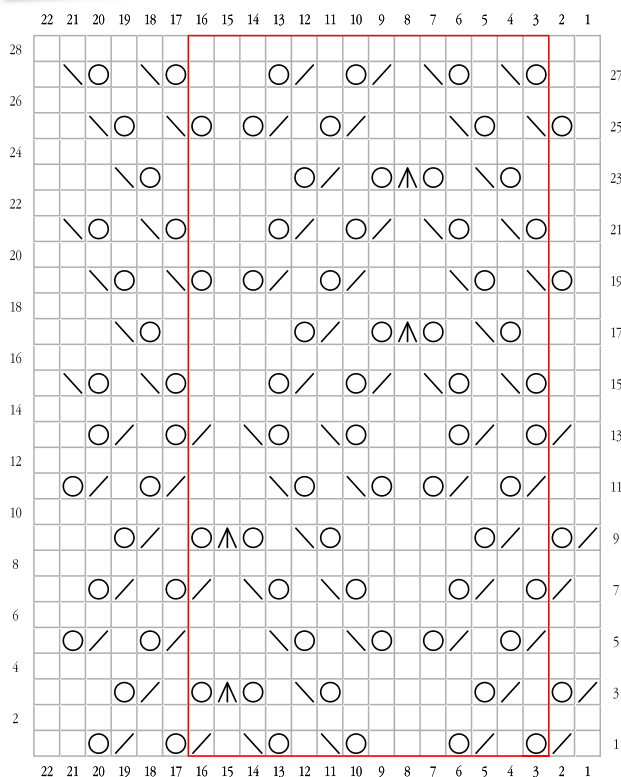
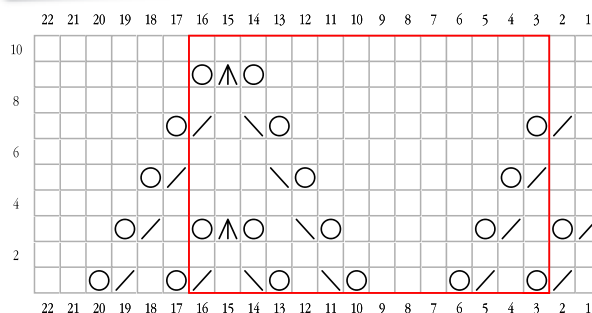


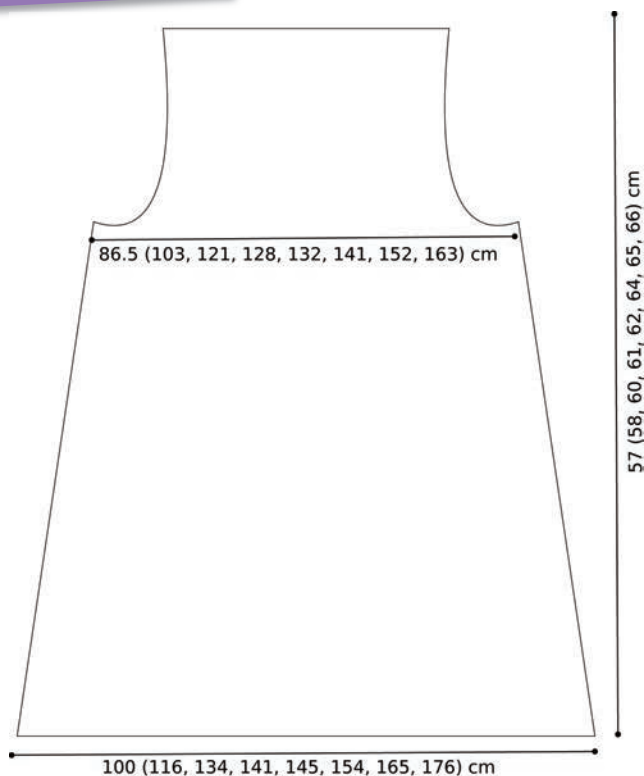
Chart B



Key

- RS: Knit
WS: purl
- RS: yo
WS: yo
- RS: k2tog
WS: p2tog
- RS: ssk
WS: p2tog, tbl
- RS: Cdd
WS: Cddp
- Pattern repeat

Schematic



Row 11: K2, * [k2tog, yo, k1] twice, yo, ssk, k1, yo, ssk, k3; rep from * to last 6 sts [k2tog, yo, k1] twice.

Row 13: K1, k2tog, * yo, k1, k2tog, yo, k3, [yo, ssk, k1] twice, k2tog; rep from * to last 6 sts yo, k1, k2tog, yo, k2.

Row 15: K2, * [yo, ssk, k1] twice, k2tog, yo, k1, k2tog, yo, k3; rep from * to last 6 sts [yo, ssk, k1] twice.

Row 17: K2, * k1, yo, ssk, k1, yo, cdd, yo, k1, k2tog, yo, k4; rep from * to last 6 sts k1, yo, ssk, k3.

Row 19: K1, yo, * ssk, k1, yo, ssk, k3, [k2tog, yo, k1] twice, yo; rep from * to last 6 sts ssk, k1, yo, ssk, k2.

Row 21: K2, * [yo, ssk, k1] twice, k2tog, yo, k1, k2tog, yo, k3; rep from * to last 6 sts [yo, ssk, k1] twice.

Row 23: K2, * k1, yo, ssk, k1, yo, cdd, yo, k1, k2tog, yo, k4; rep from * to last 6 sts k1, yo, ssk, k3.

Row 25: K1, yo, * ssk, k1, yo, ssk, k3, [k2tog, yo, k1] twice, yo; rep from * to last 6 sts ssk, k1, yo, ssk, k2.

Row 27: K2, * [yo, ssk, k1] twice, k2tog, yo, k1, k2tog, yo, k3; rep from * to last 6 sts [yo, ssk, k1] twice.

CHART B

Row 1 (RS): K1, k2tog, *yo, k1, k2tog, yo, k3, [yo, ssk, k1] twice, k2tog; rep from * to last 6 sts yo, k1, k2tog, yo, k2.

Row 2 and all WS rows to Row 10: Purl.

Row 3: K2tog, yo, *k1, k2tog, yo, k5, yo, ssk, k1, yo, cdd, yo; rep from * to last 6 sts k1, k2tog, yo, k3.

Row 5: K2, *k2tog, yo, k7, yo, ssk, k3; rep from * to last 6 sts k2tog, yo, k4.

Row 7: K1, k2tog, *yo, k9, yo, ssk, k1, k2tog; rep from * to last 6 sts yo, k5.

Row 9: K2, *k11, yo, cdd, yo; rep from * to last 6 sts k6.

TOP TIPS

When you come to the end of the skein, make sure that you change to the new skein at the sides of the work where the join will be less obvious

Abbreviations:

- k** – knit
- p** – purl
- St st** – stocking stitch
- WS** – wrong side
- RS** – right side
- pm** – place marker
- m1** – make one
- yo** – yarn over
- k2tog** – knit two together