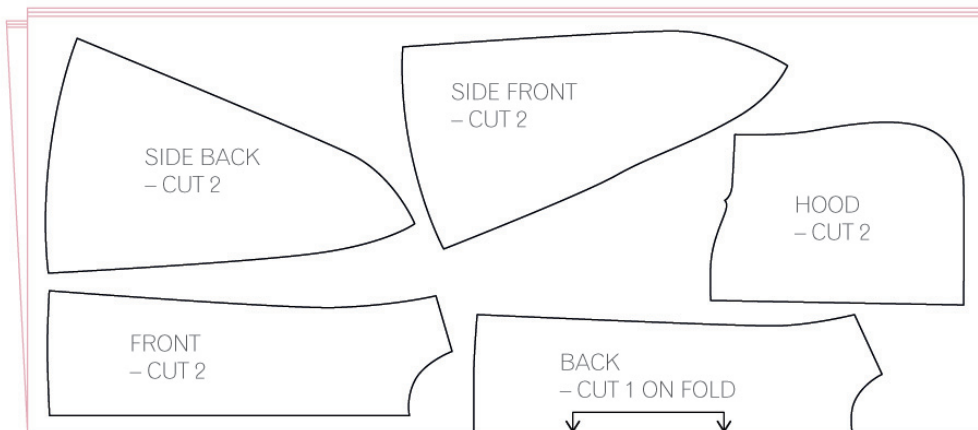
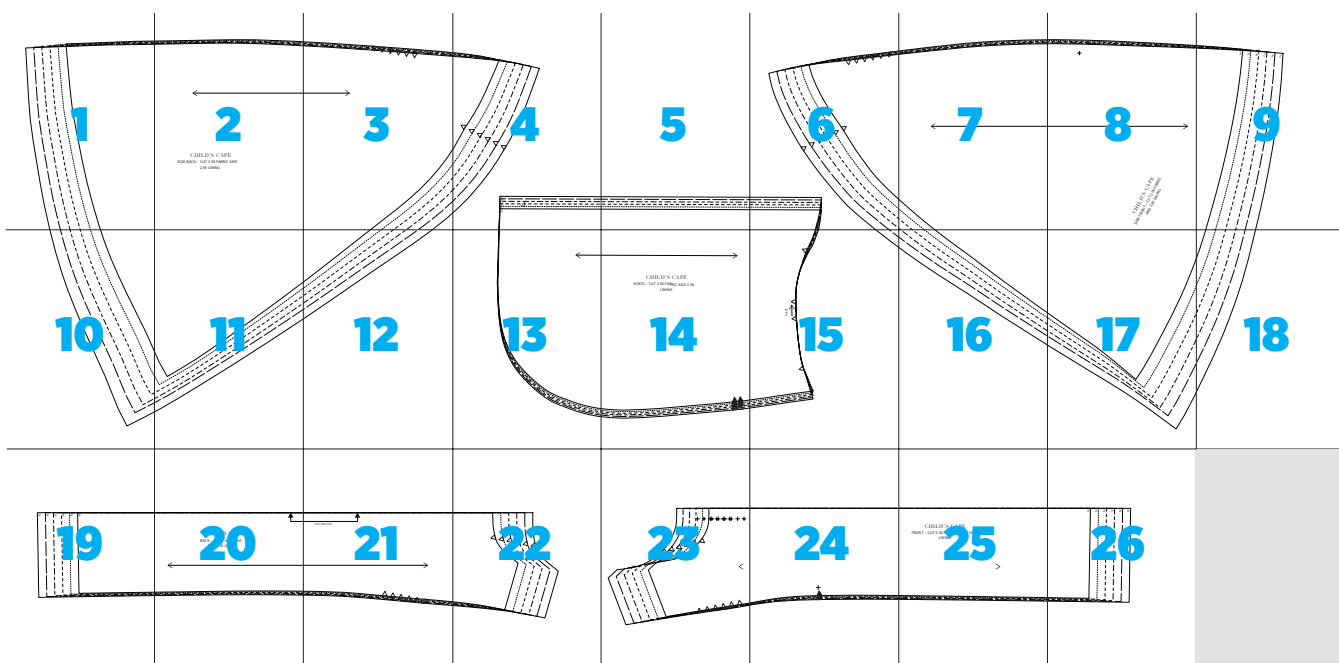
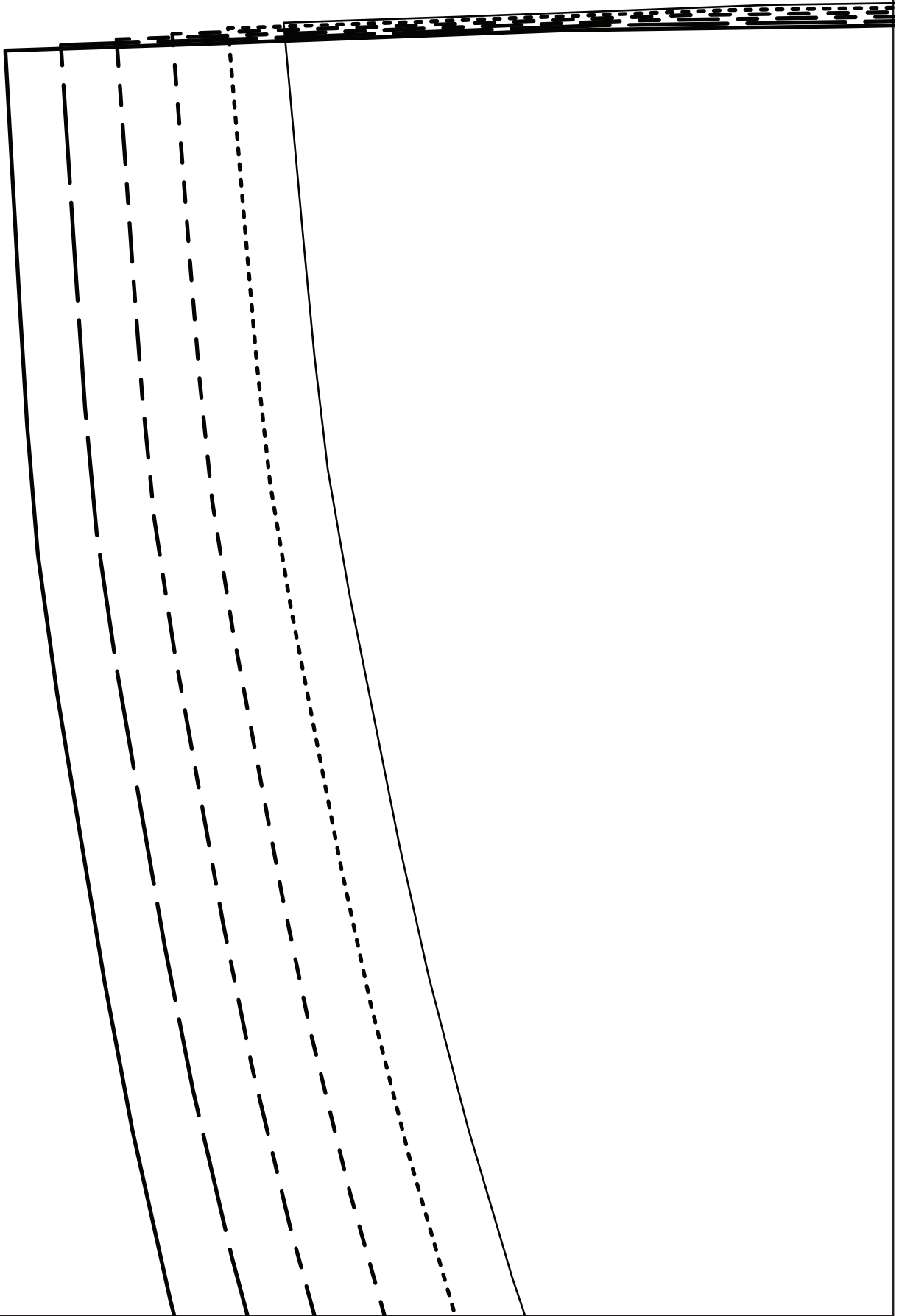


Child's Cape

Page 83



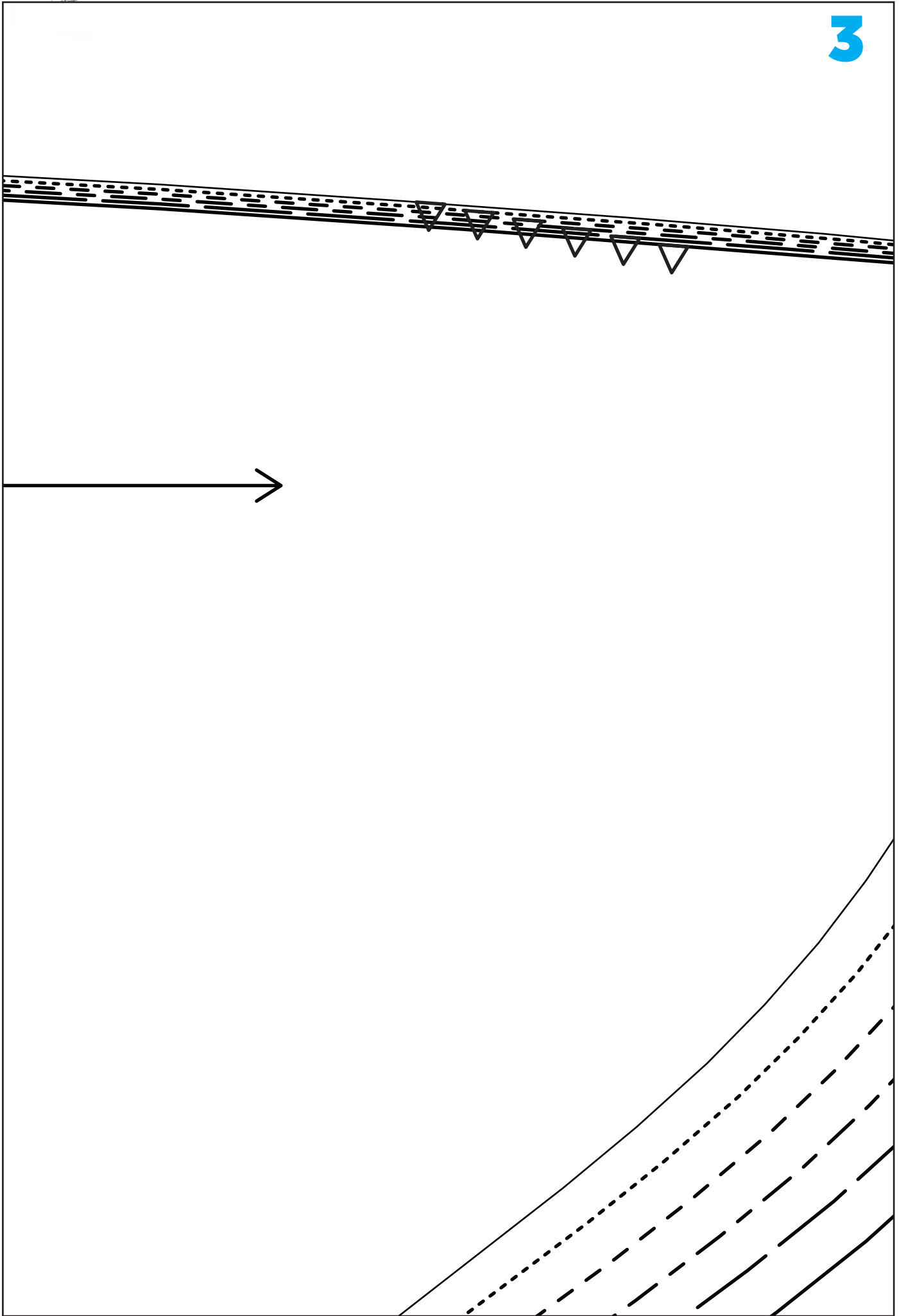
1

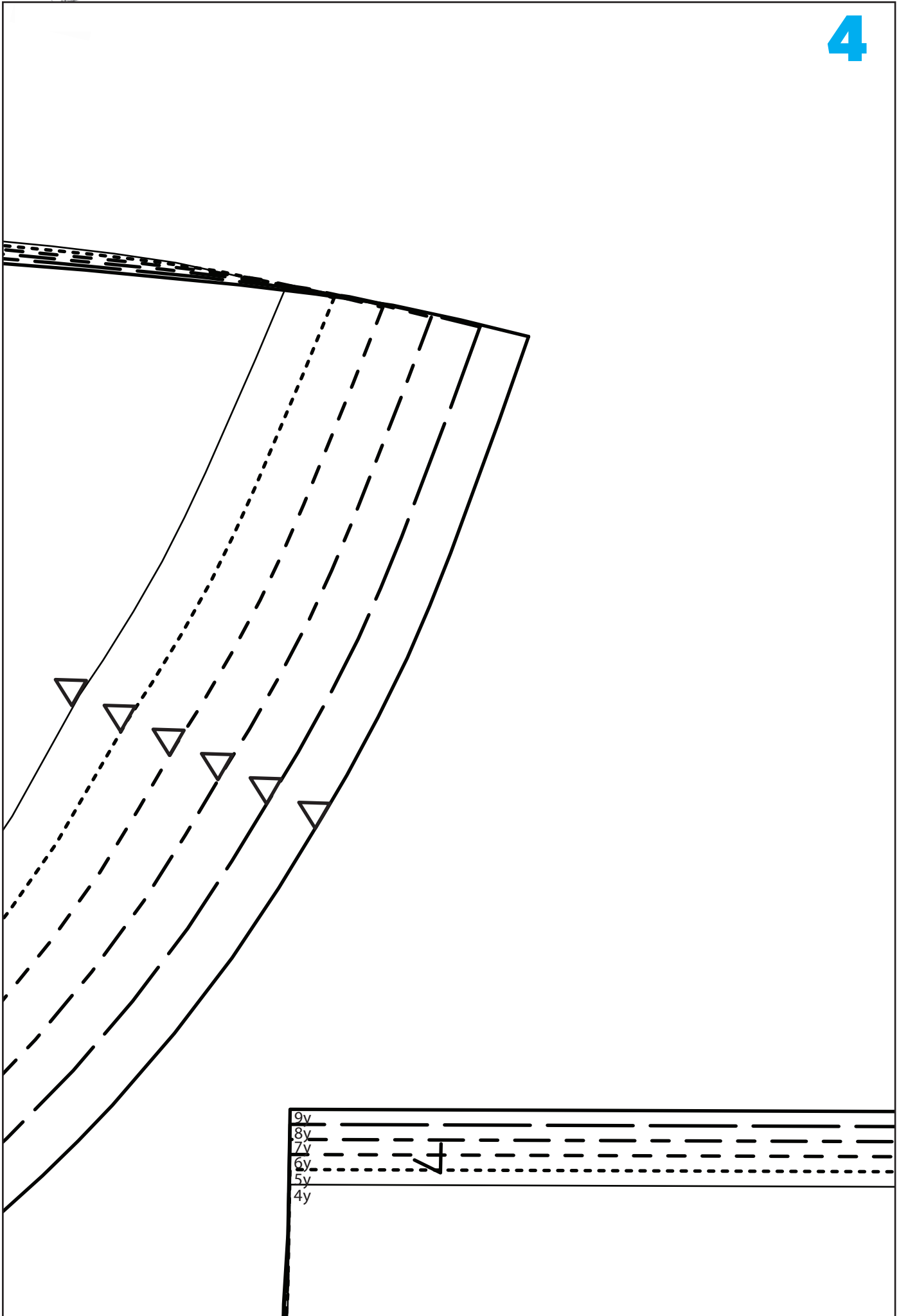


2

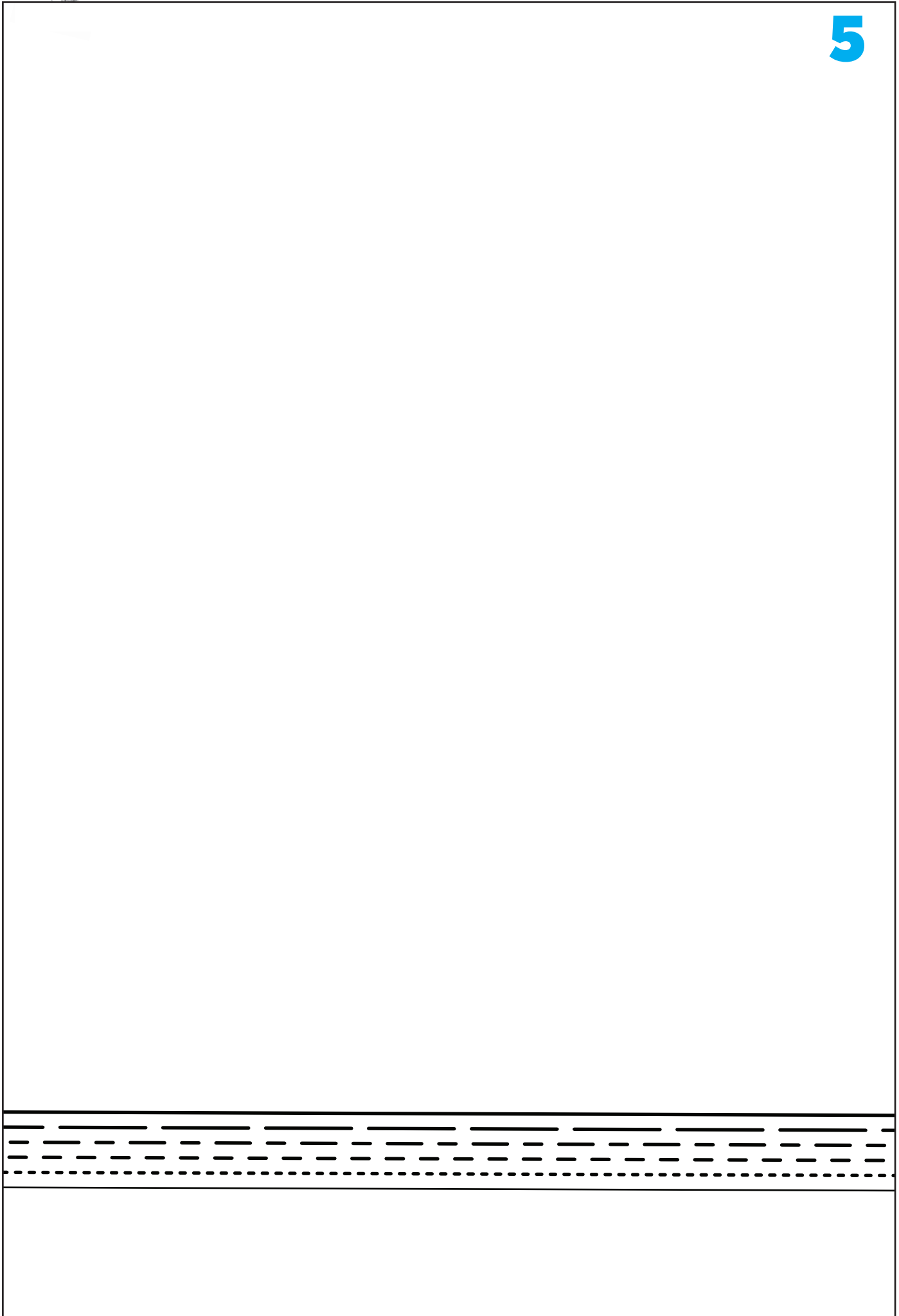


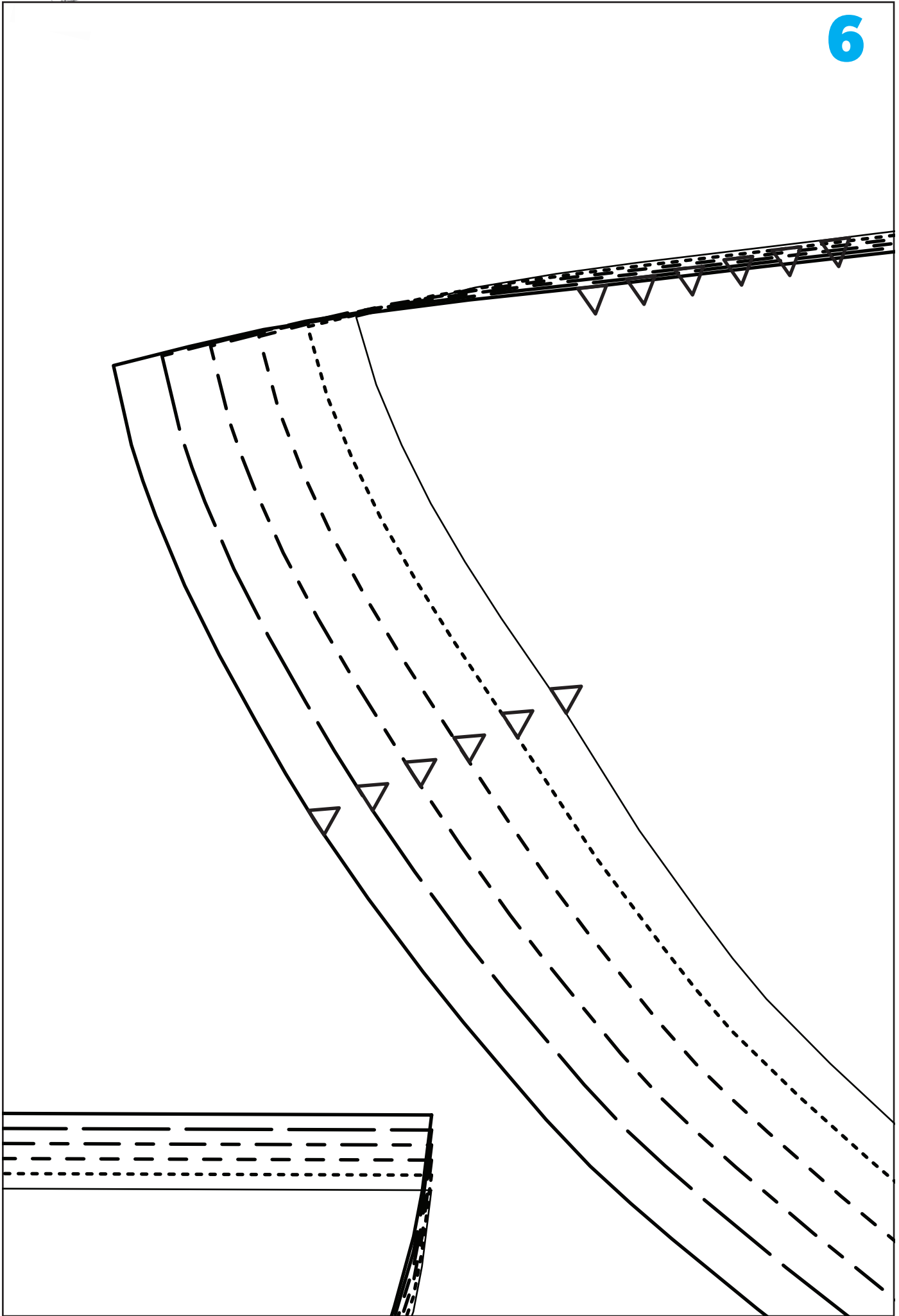
CHILD'S CAPE
SIDE BACK – CUT 2 IN FABRIC AND
2 IN LINING

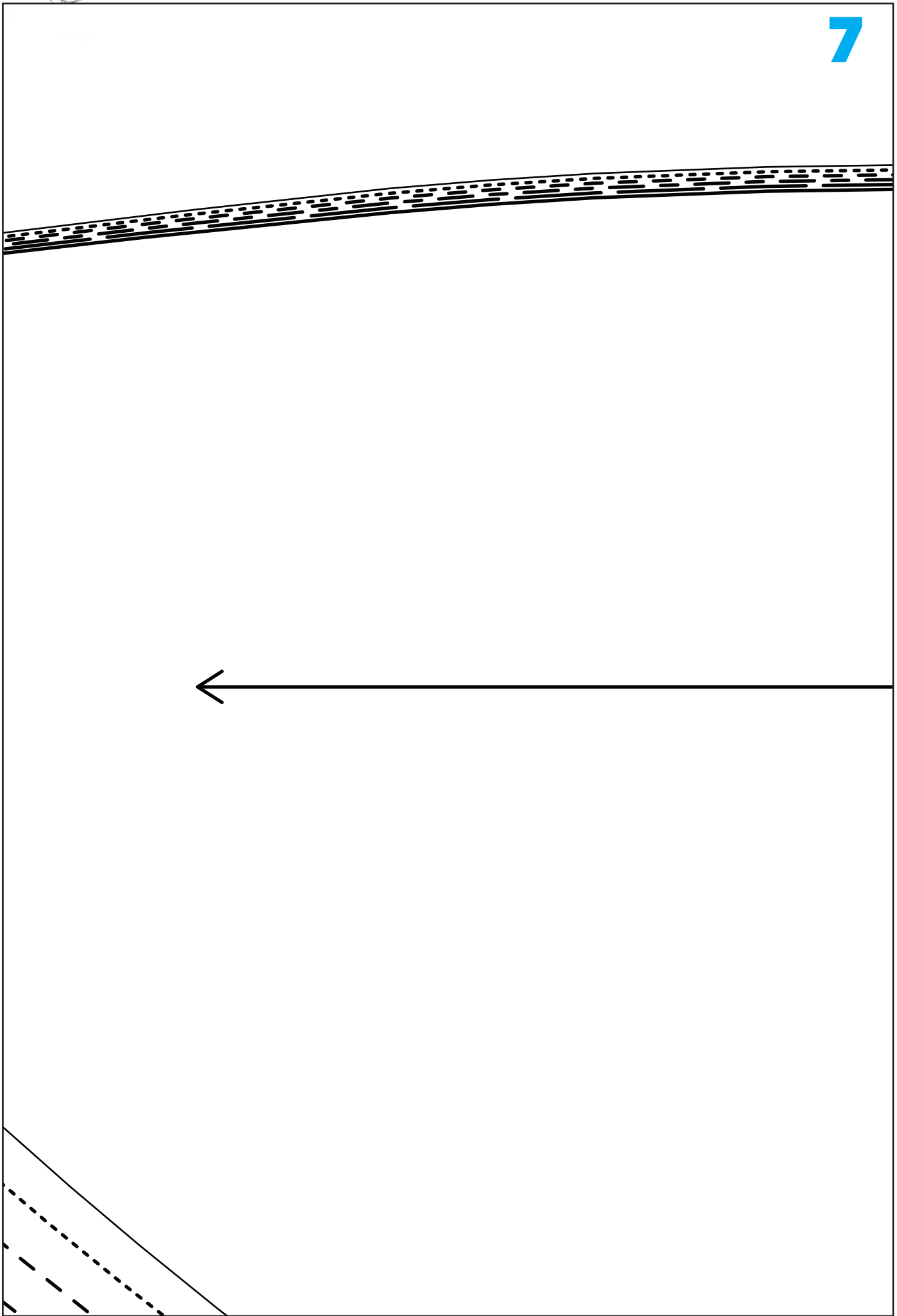




9y	—————
8y	- - - - -
7y	- . - . -
6y
5y	—————
4y	—————

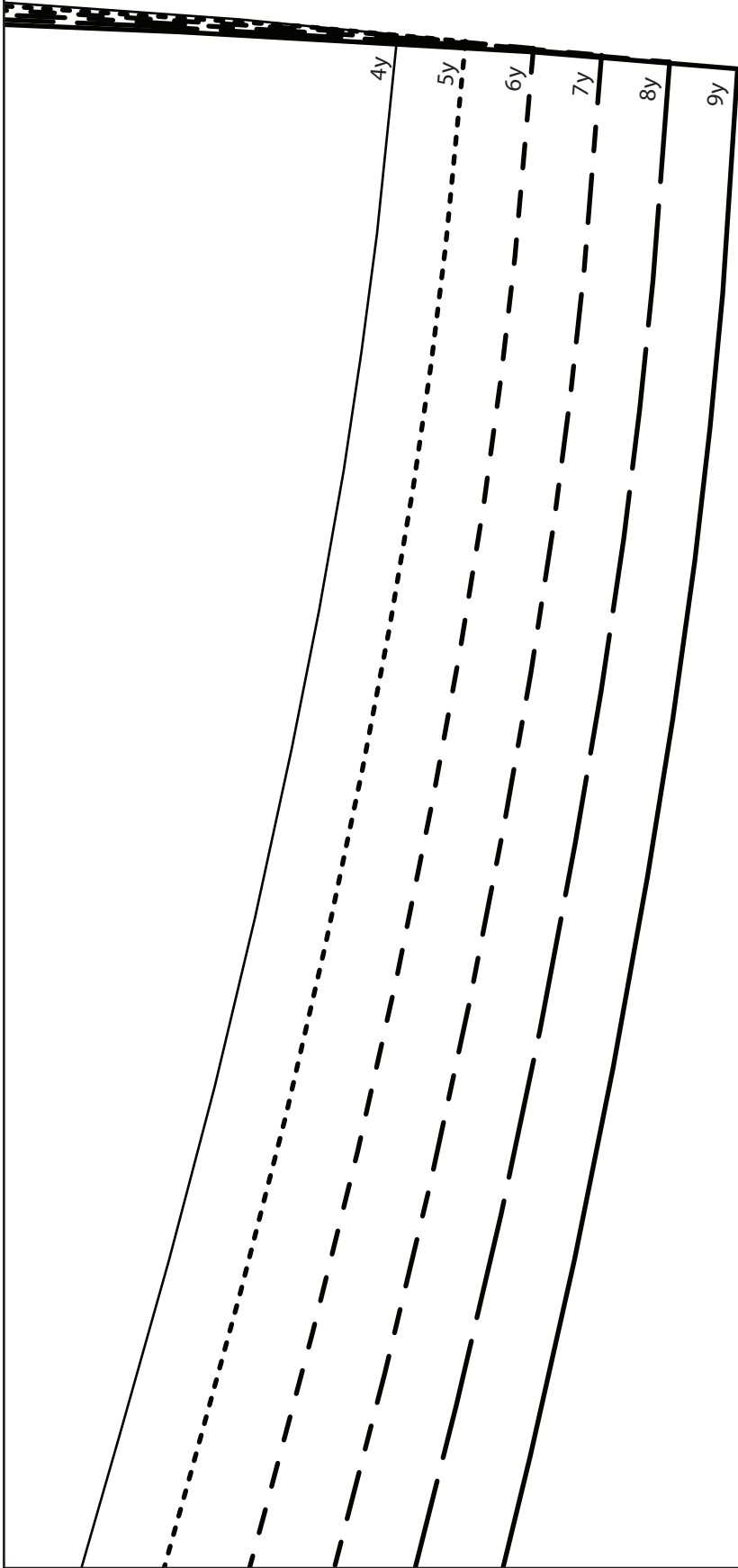


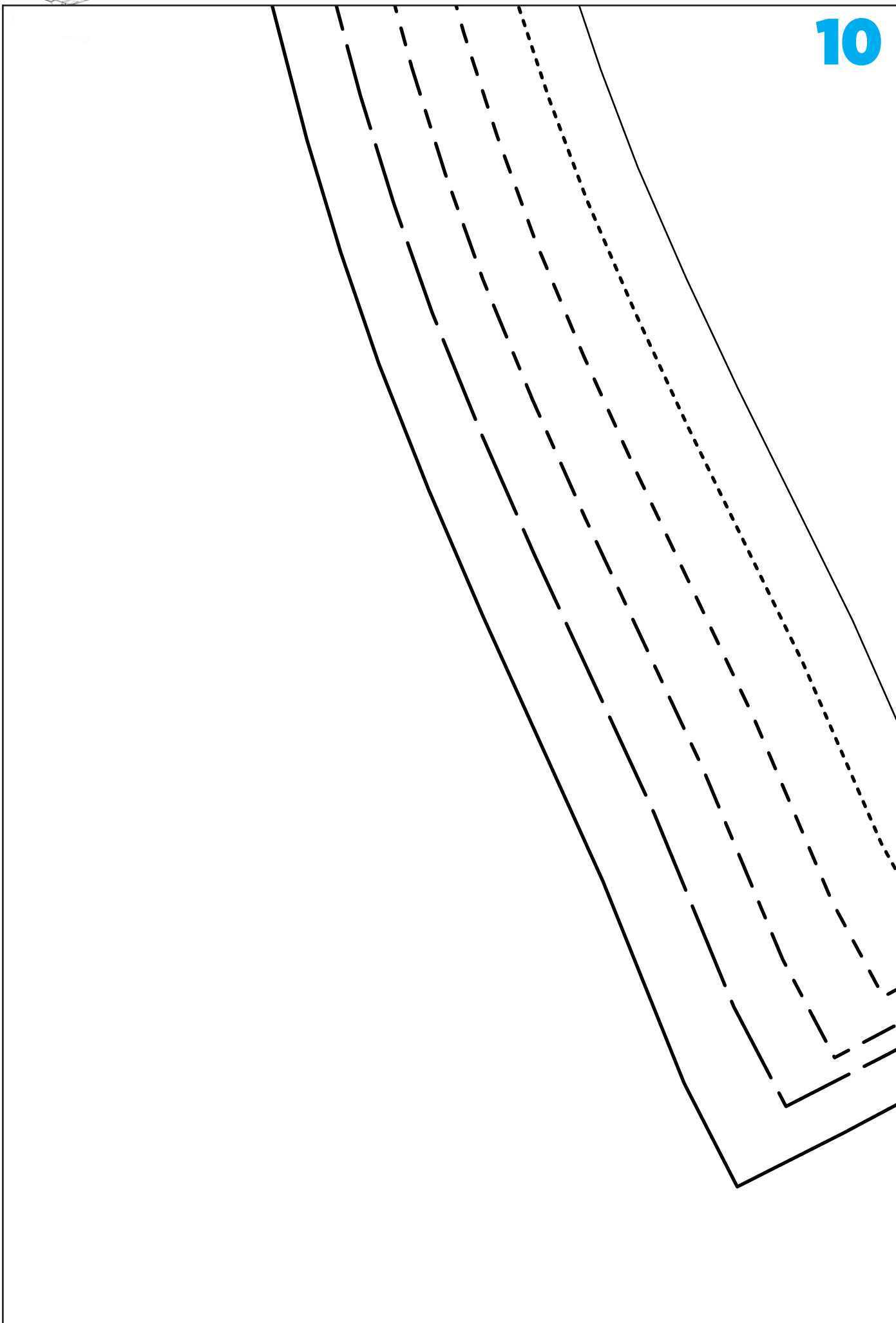


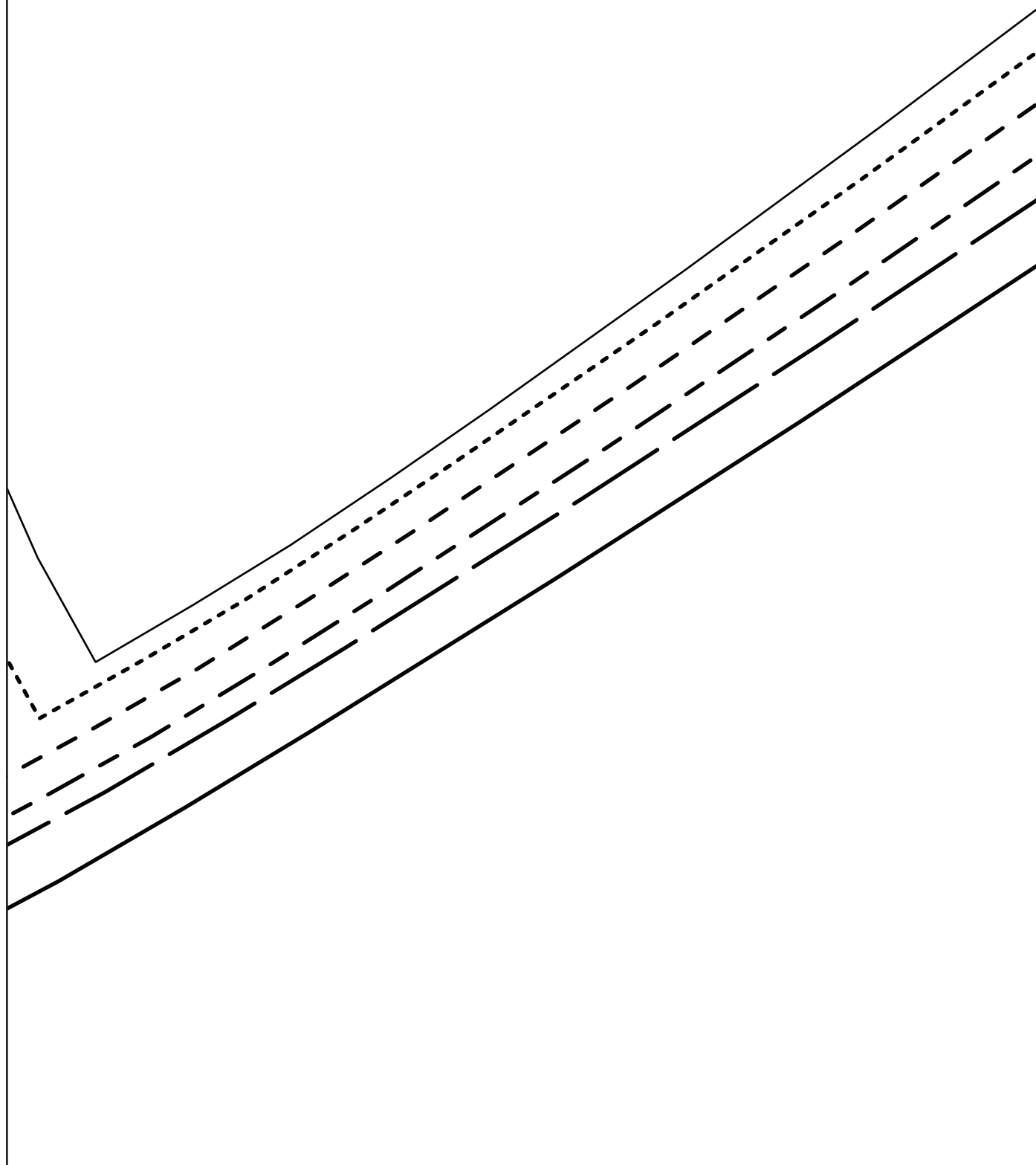


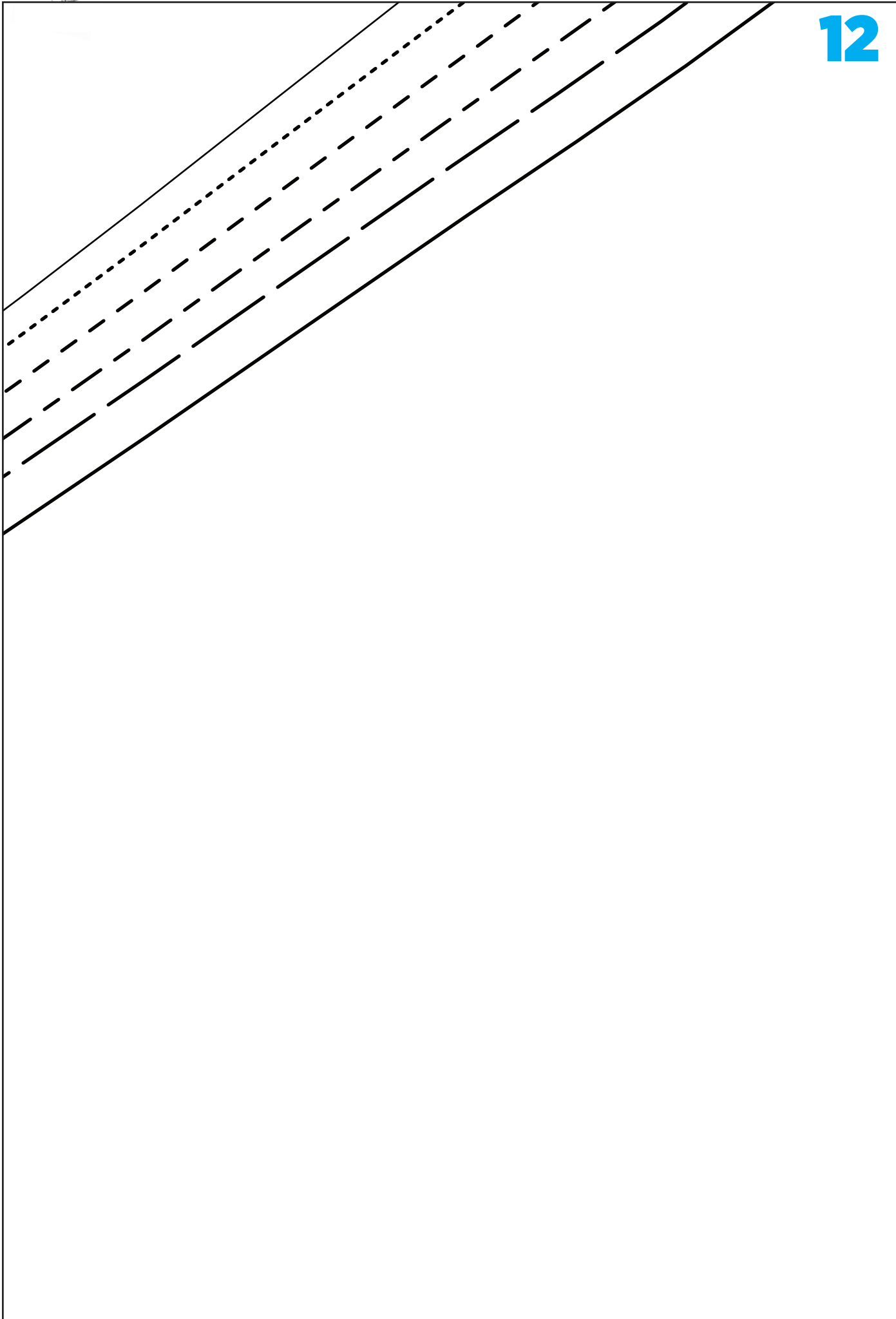


*CHILD'S CAPE
SIDE FRONT - CUT 2 IN FABRIC
AND 2 IN LINING*



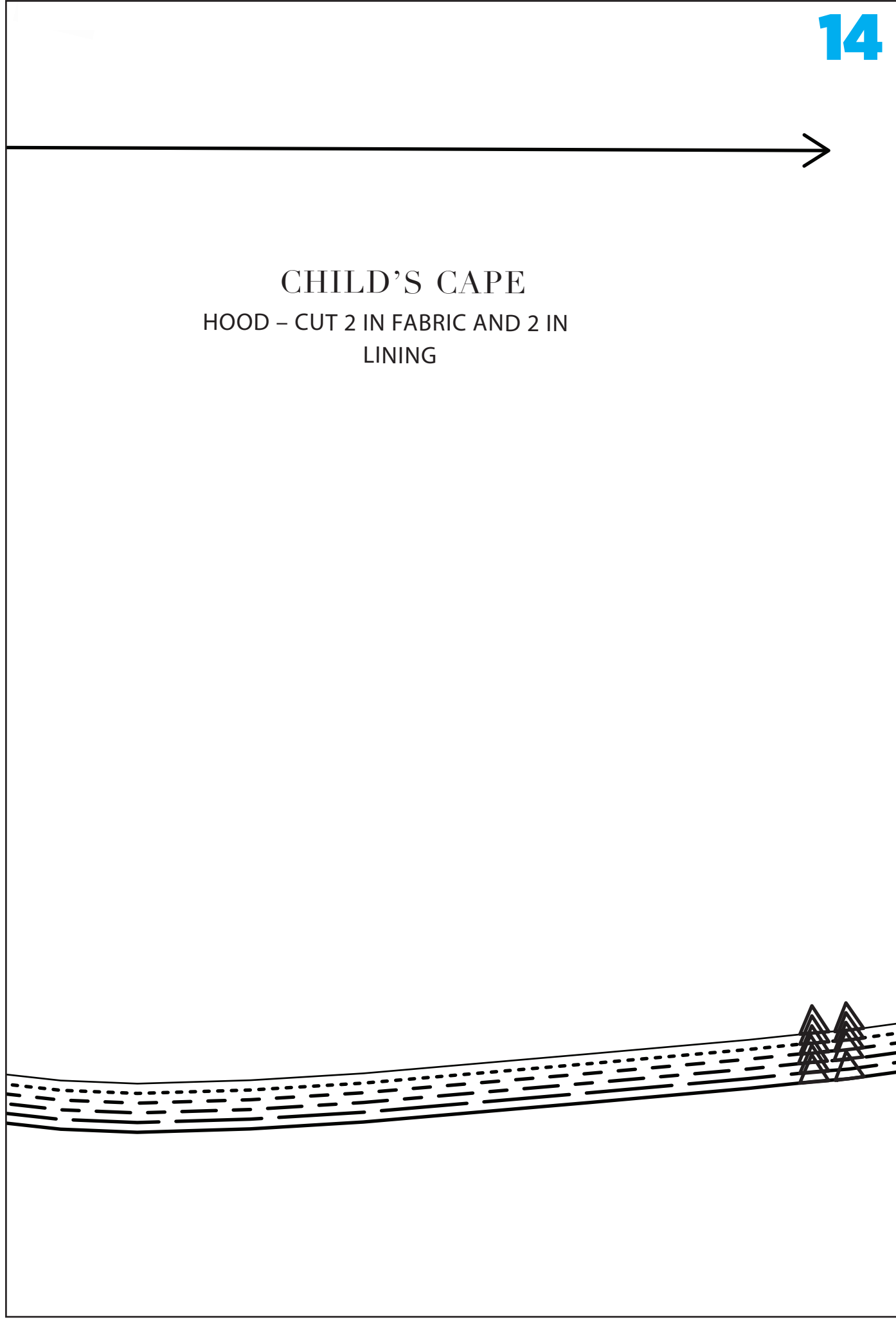


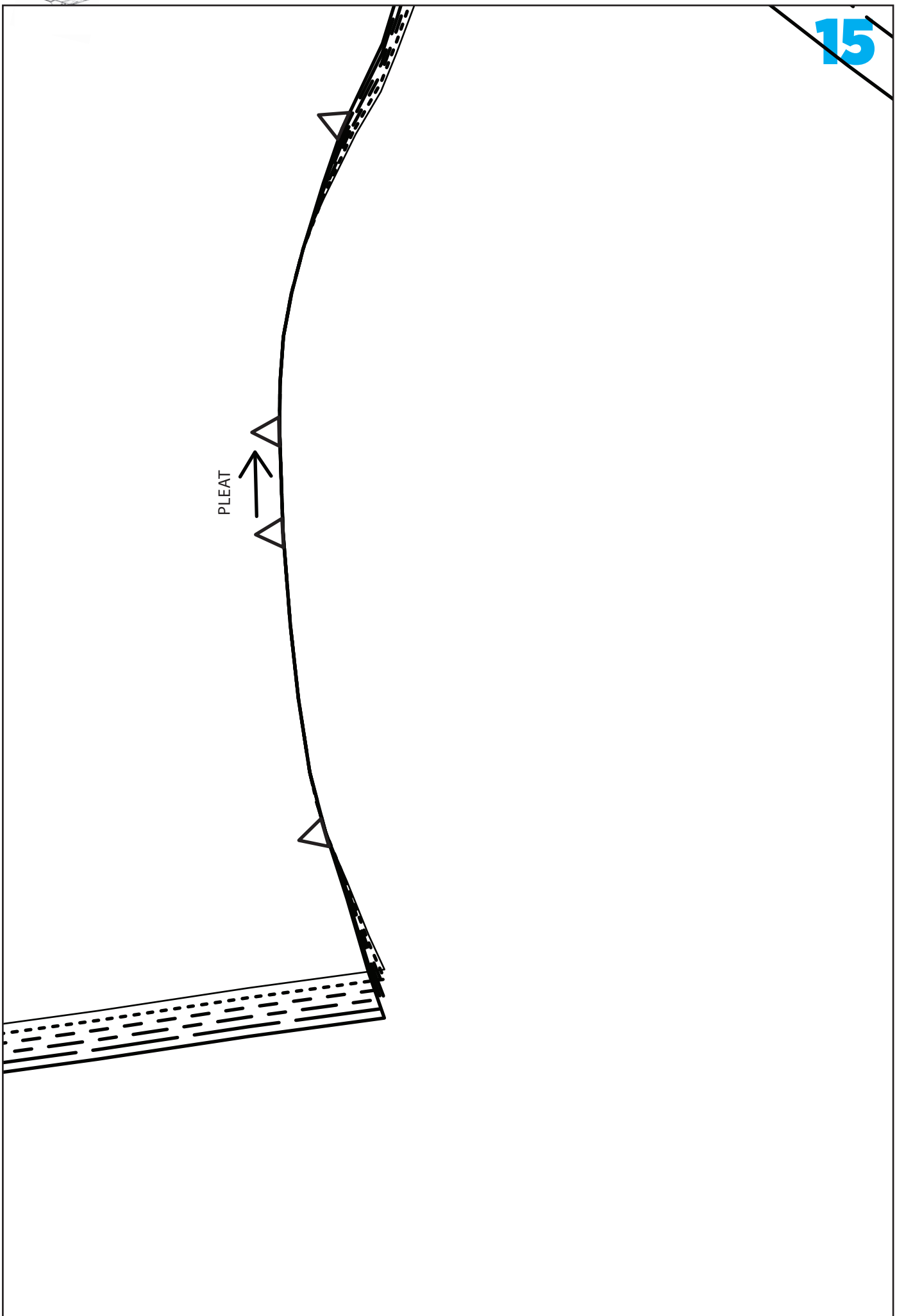


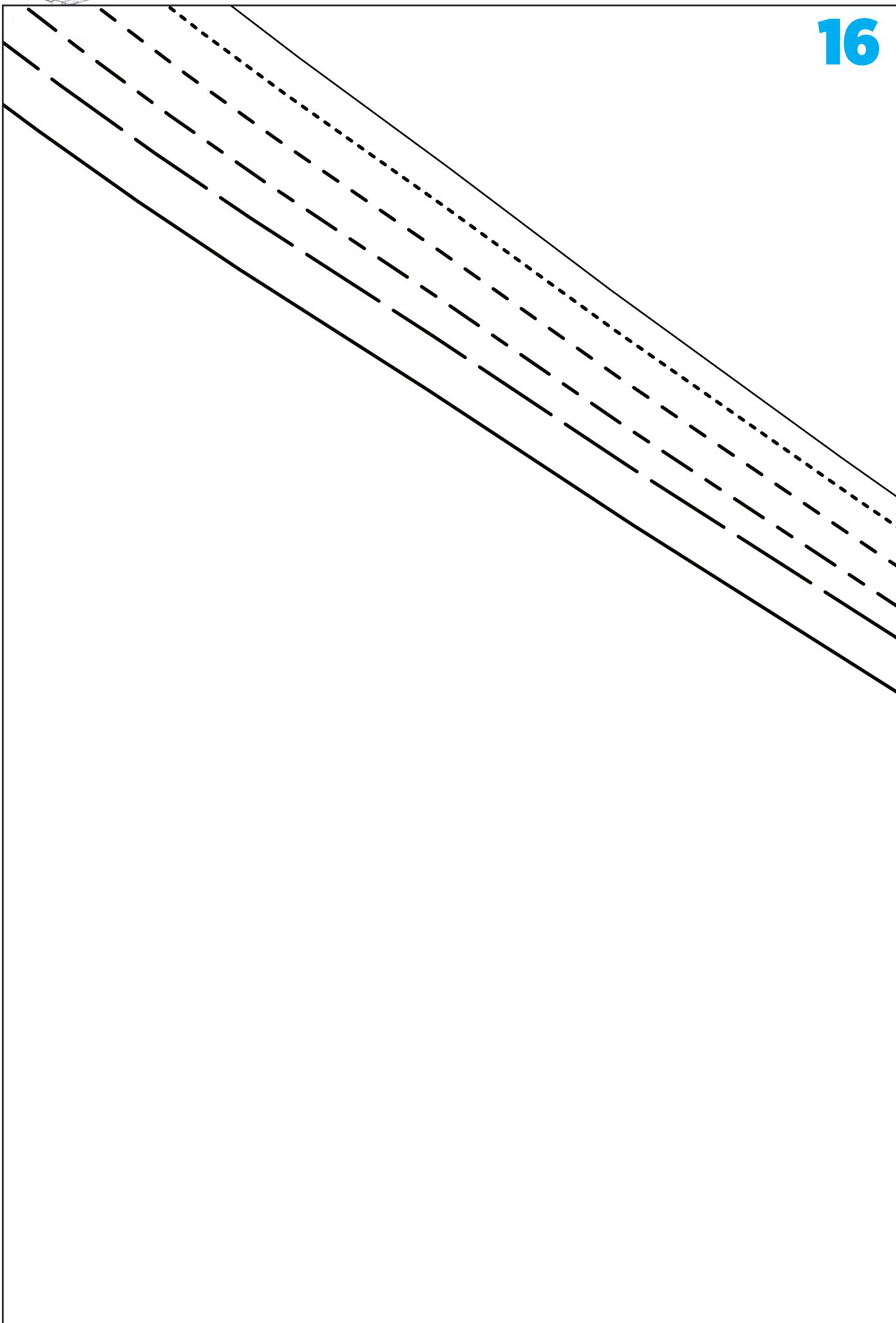


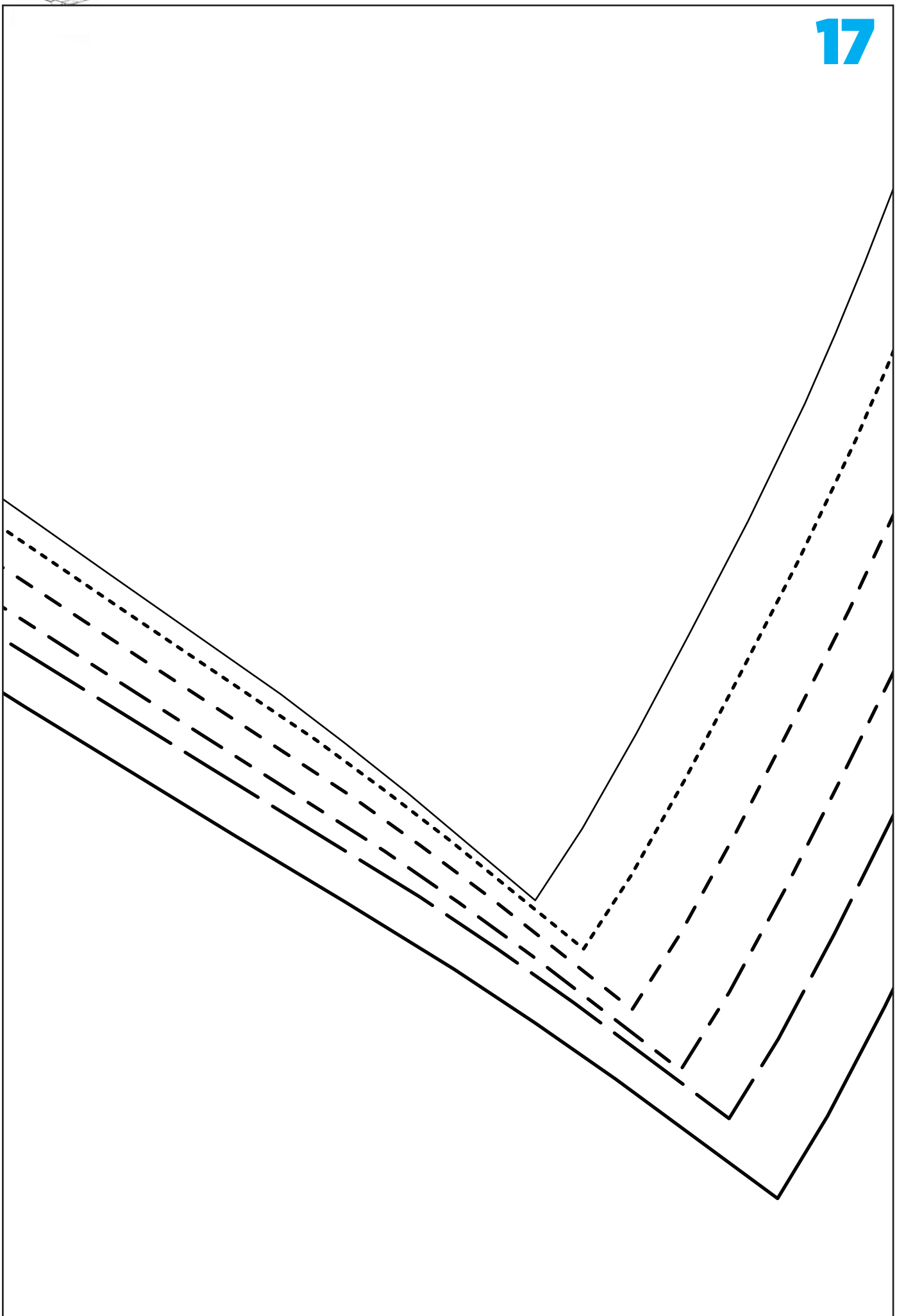


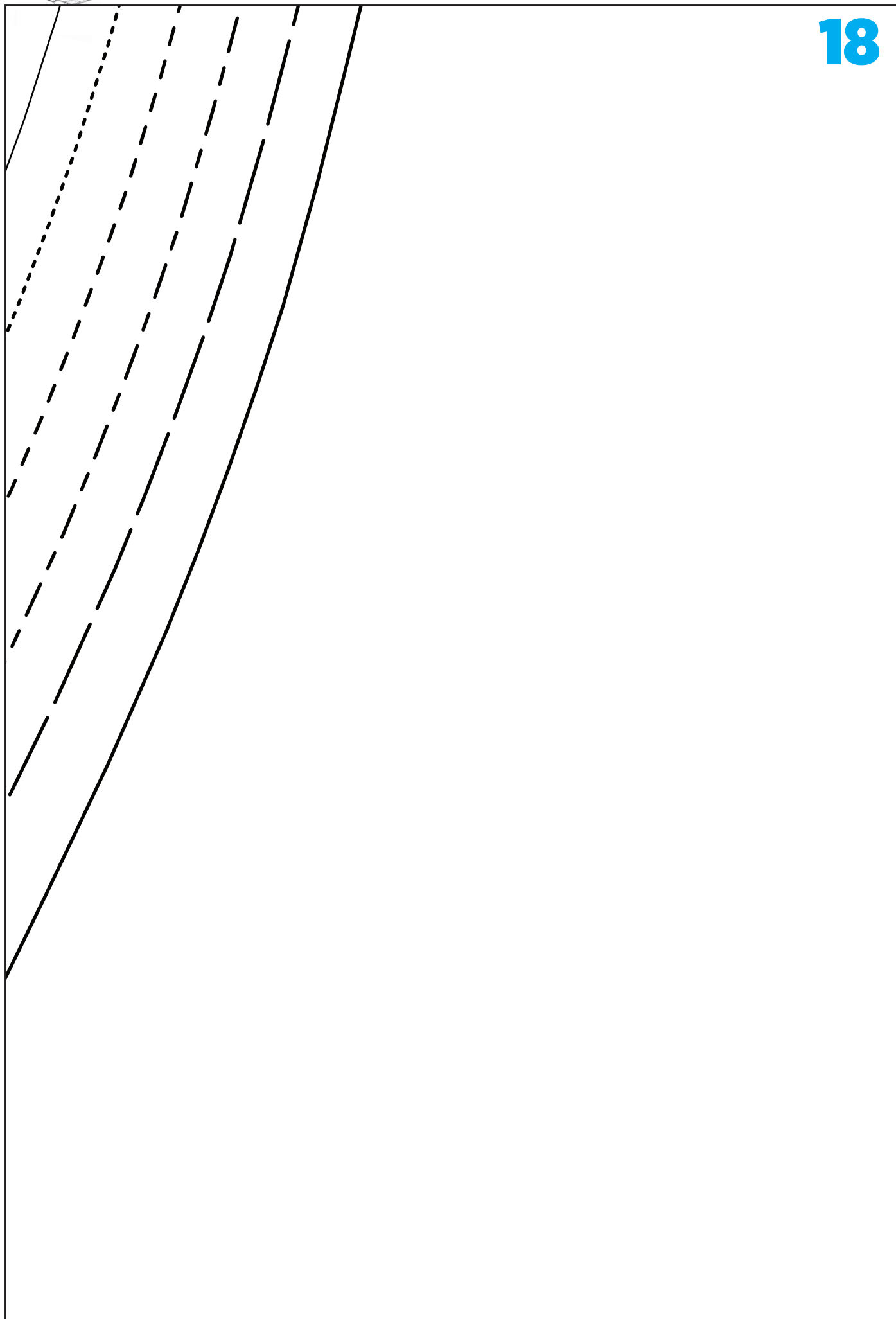
CHILD'S CAPE
HOOD - CUT 2 IN FABRIC AND 2 IN
LINING

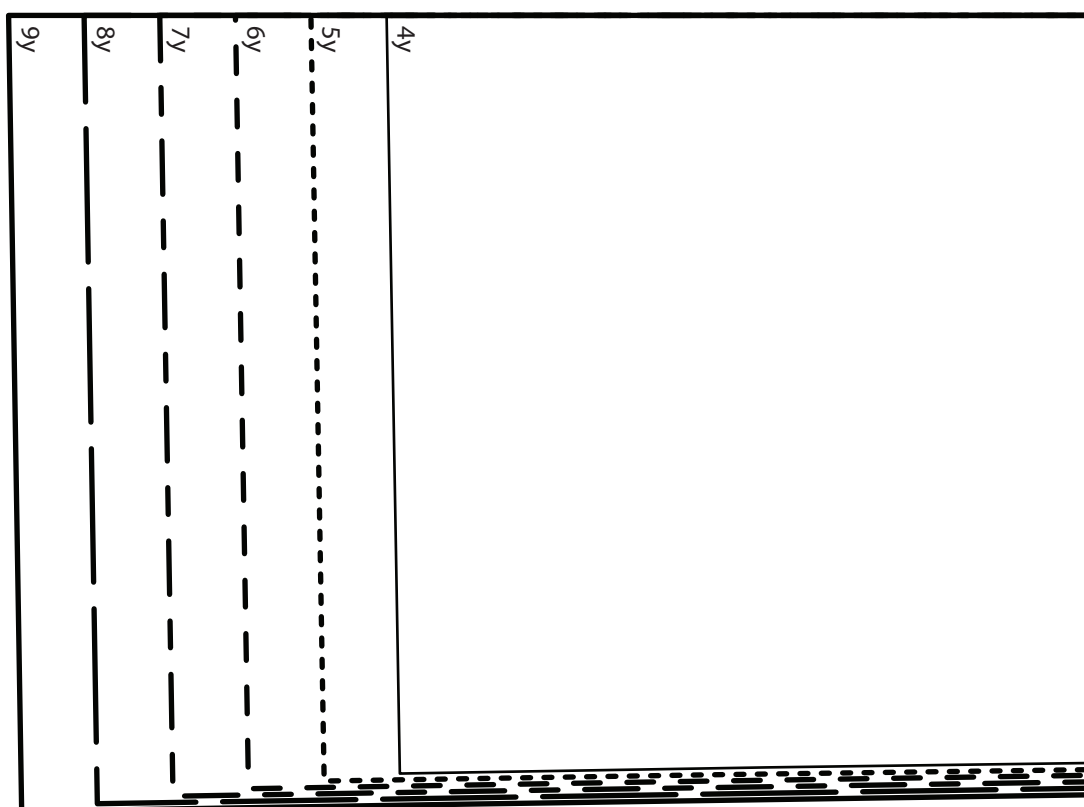








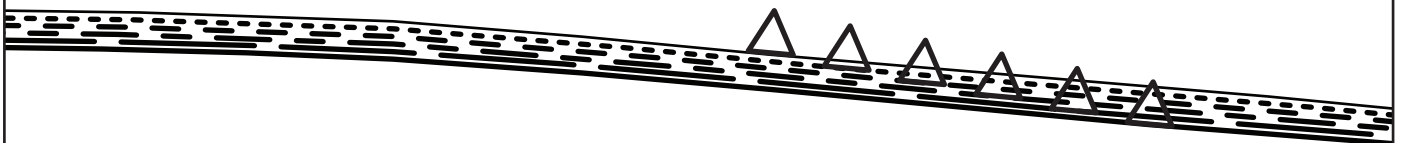


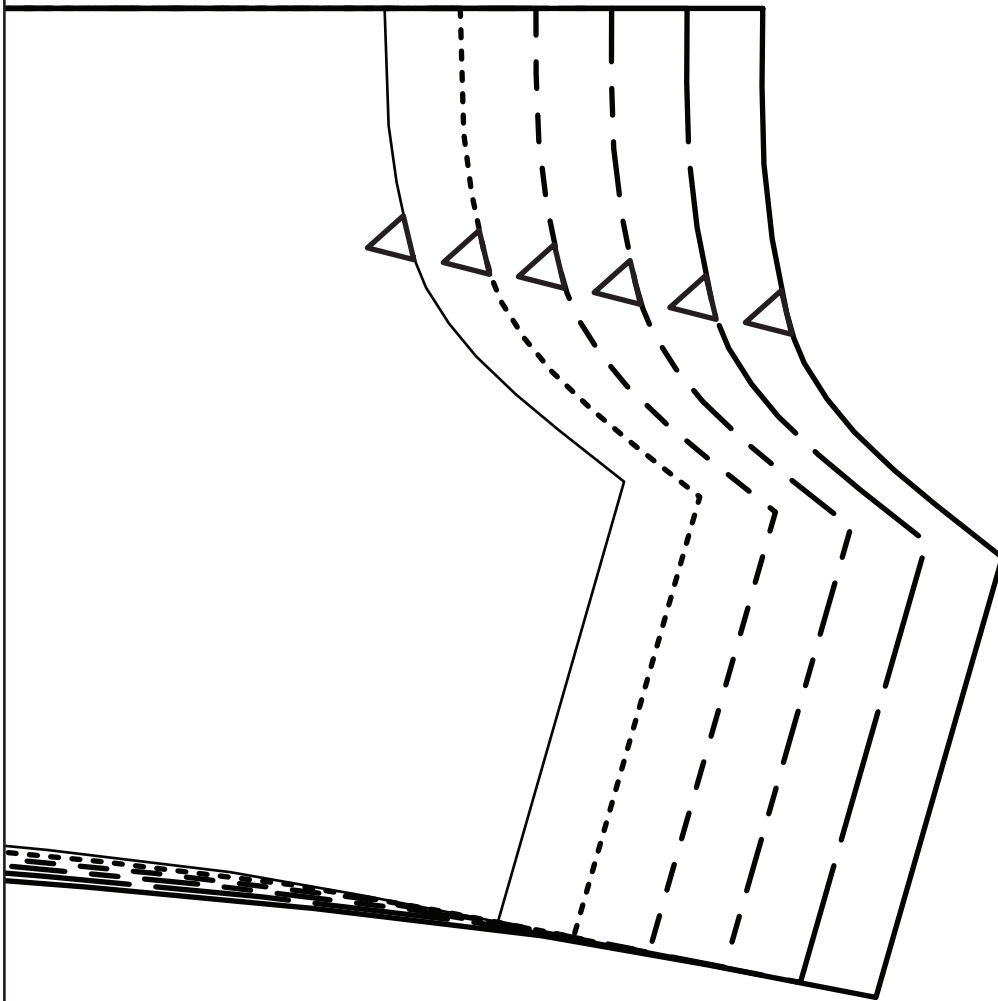


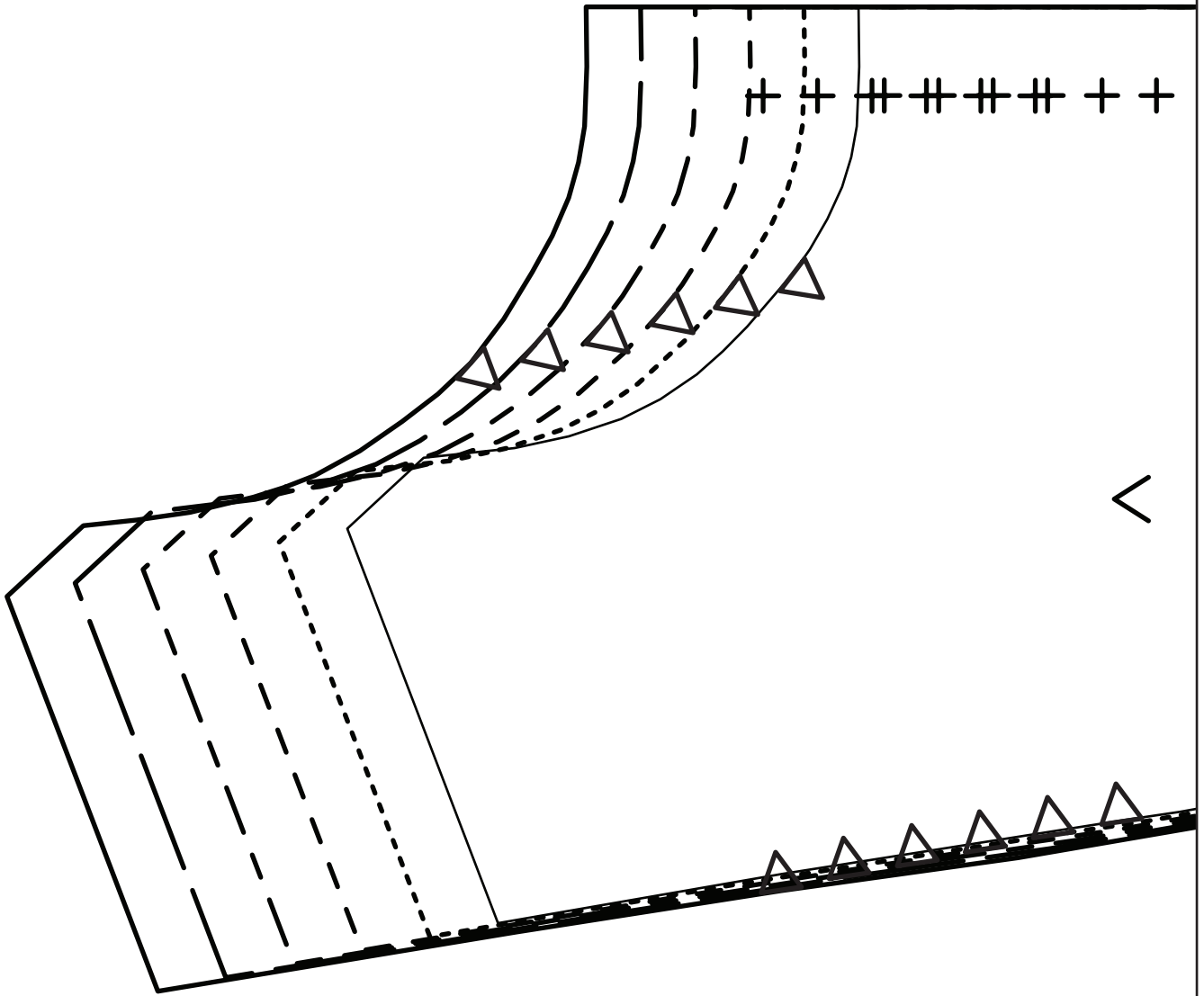
CHILD'S CAPE
BACK - CUT 1 IN FABRIC
AND 1 IN LINING

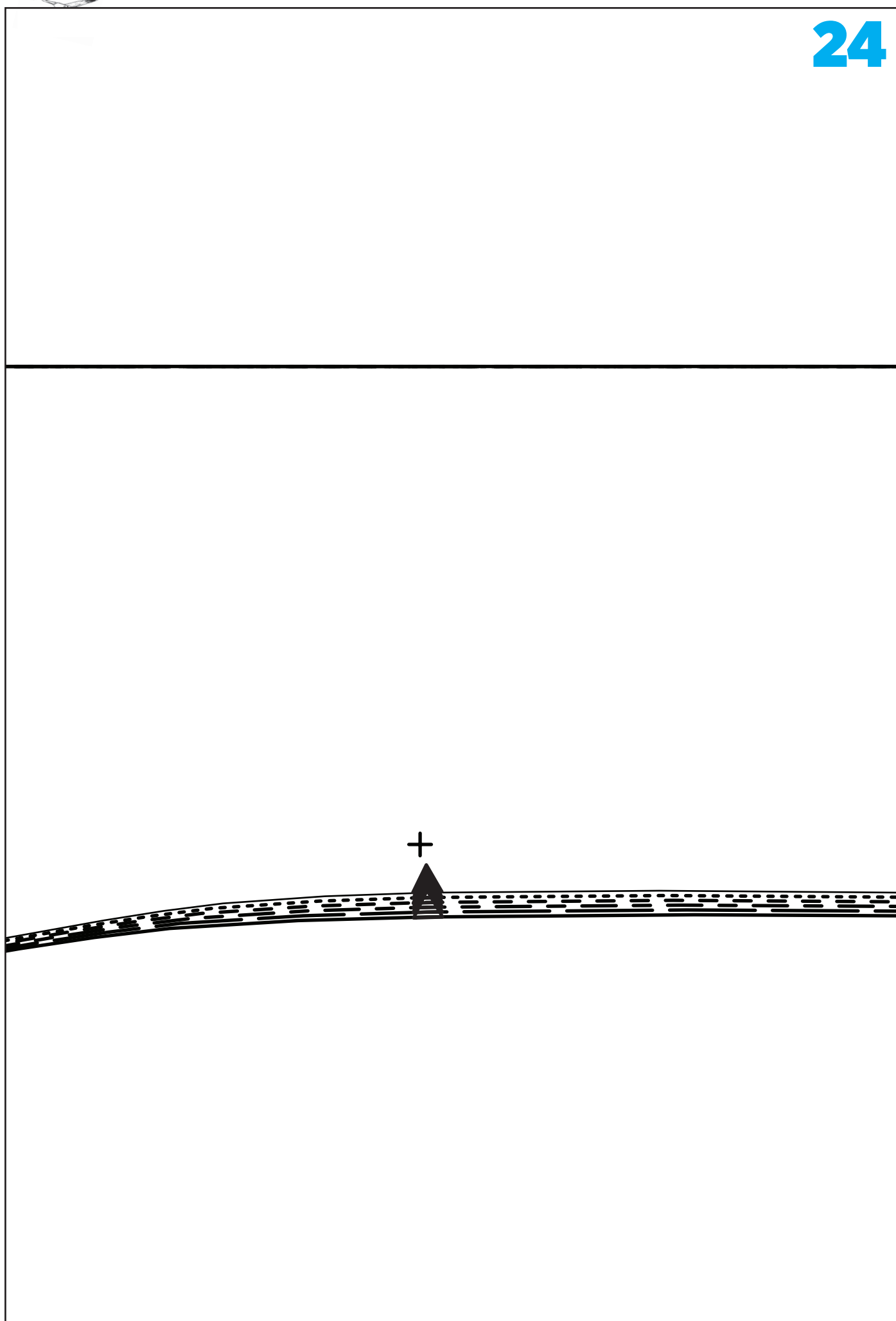


CUT ON FOLD









CHILD'S CAPE
FRONT - CUT 2 IN FABRIC AND 2 IN
LINING



	4y	5y	6y	7y	8y	9y
--	----	----	----	----	----	----