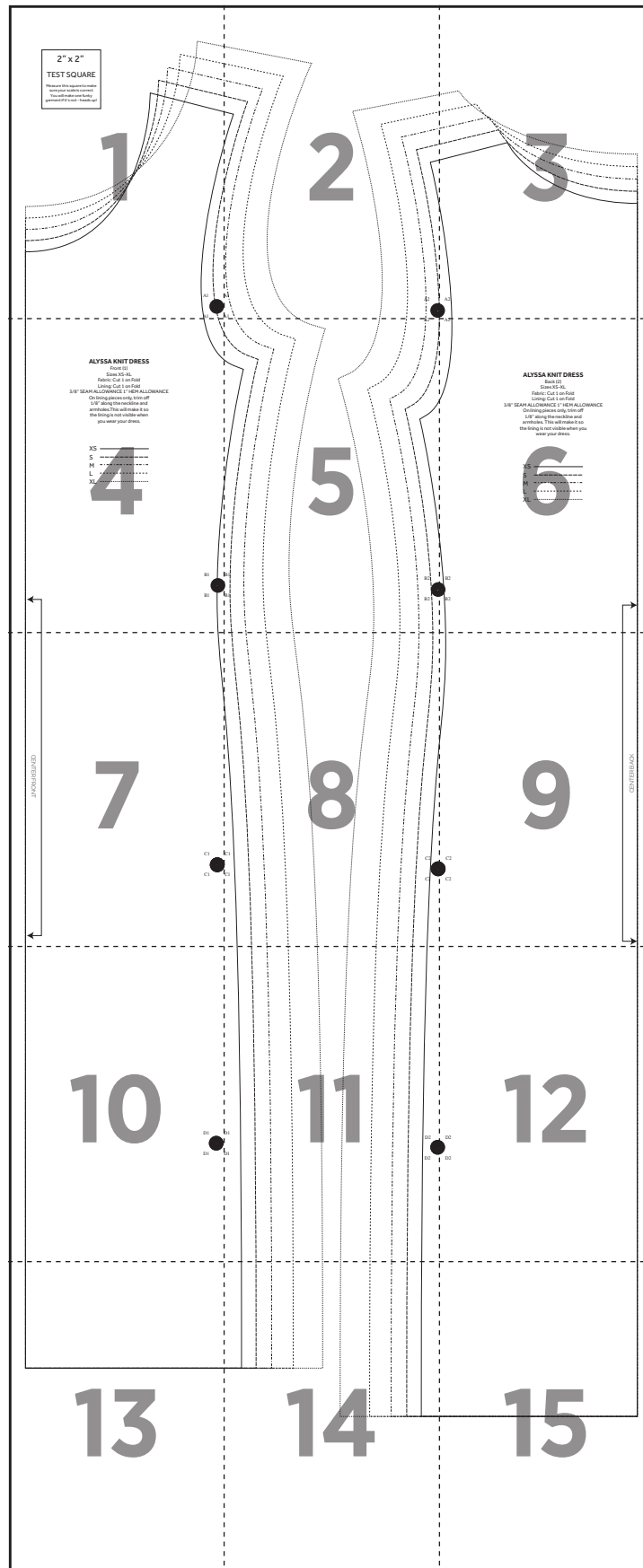


Jersey maxi dress

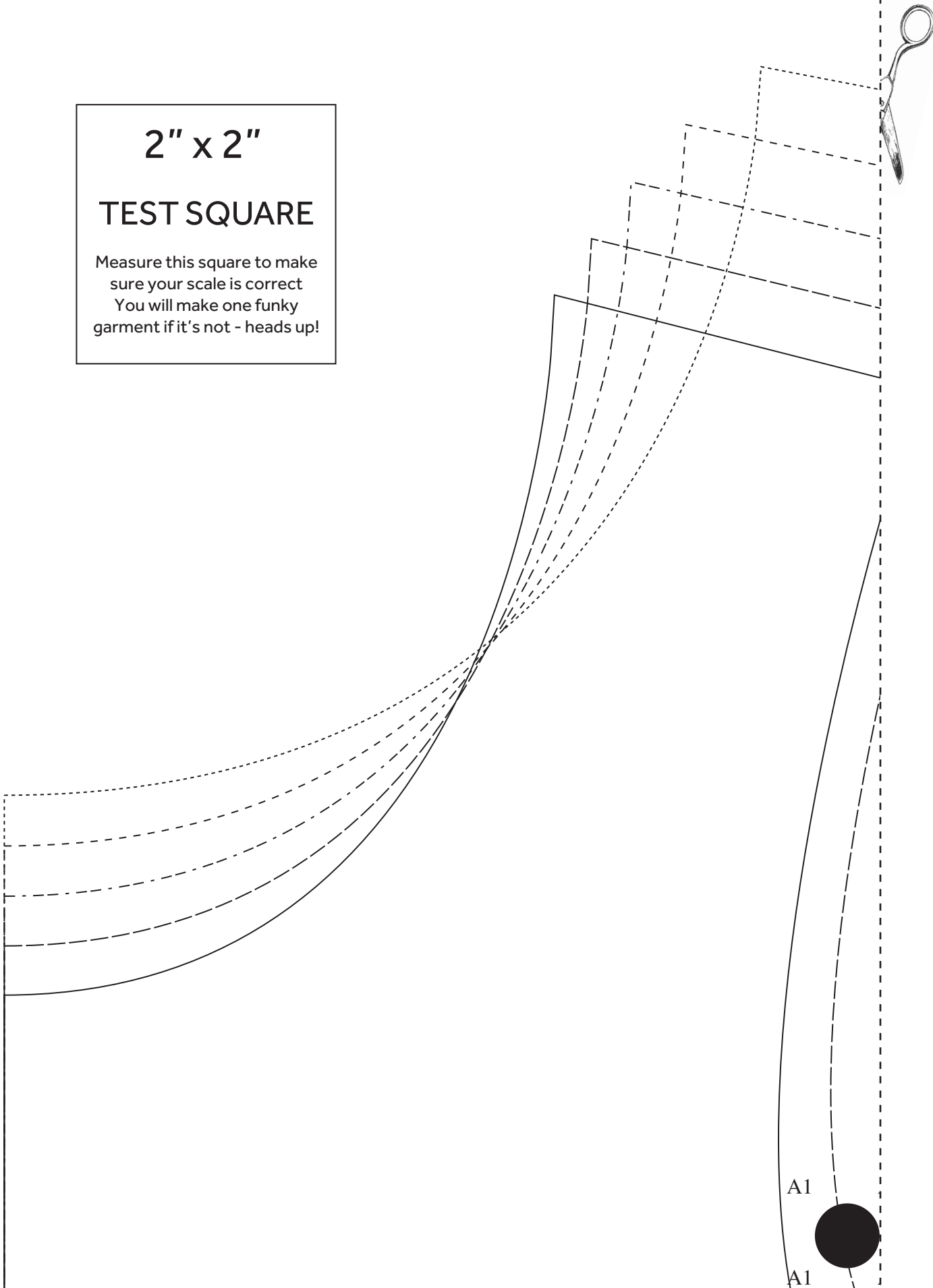


1

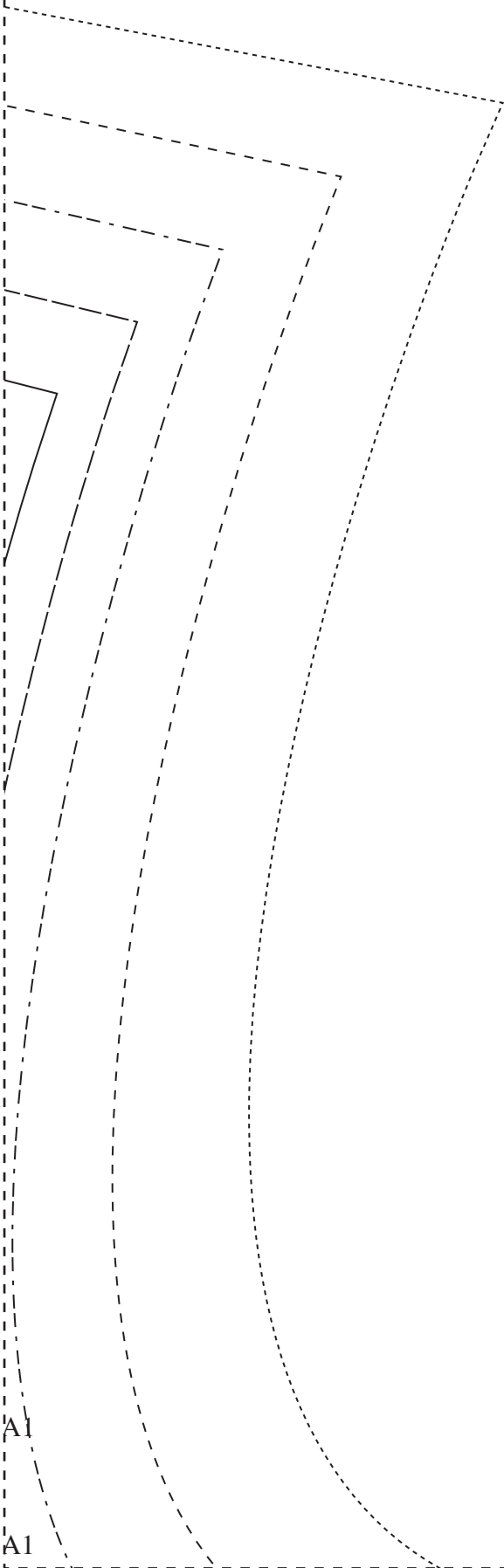
2" x 2"

TEST SQUARE

Measure this square to make
sure your scale is correct
You will make one funky
garment if it's not - heads up!

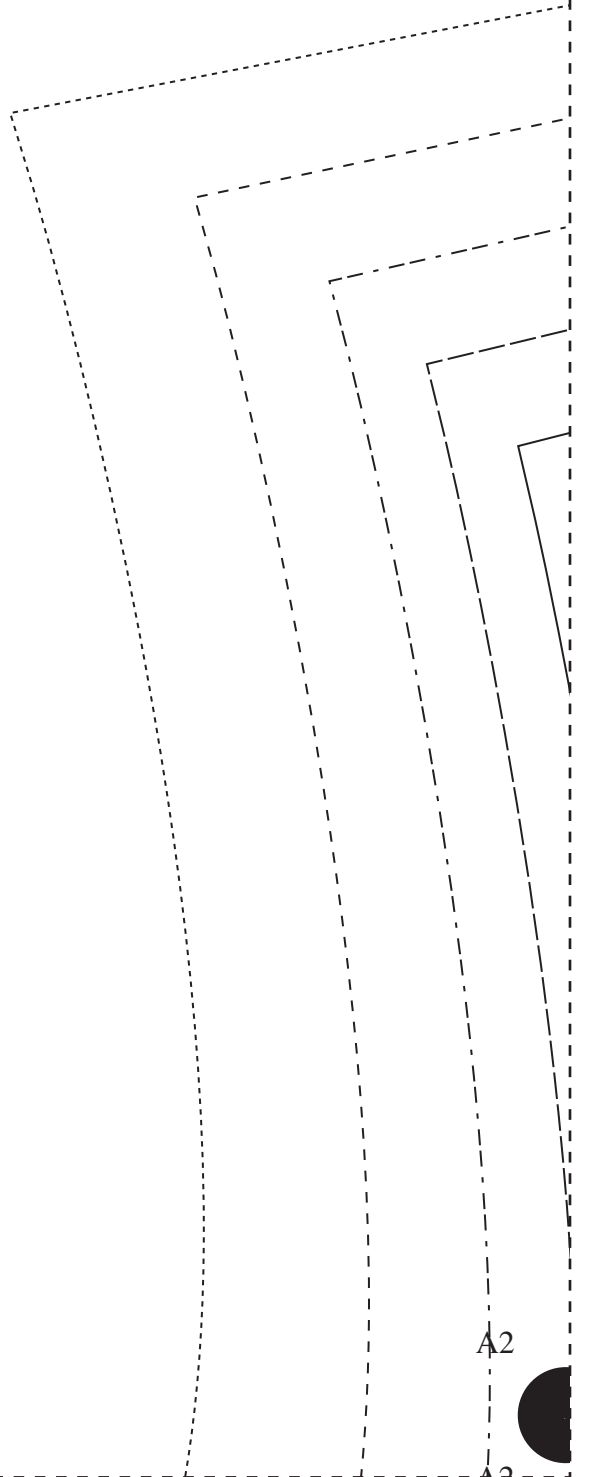


2



A1

A1

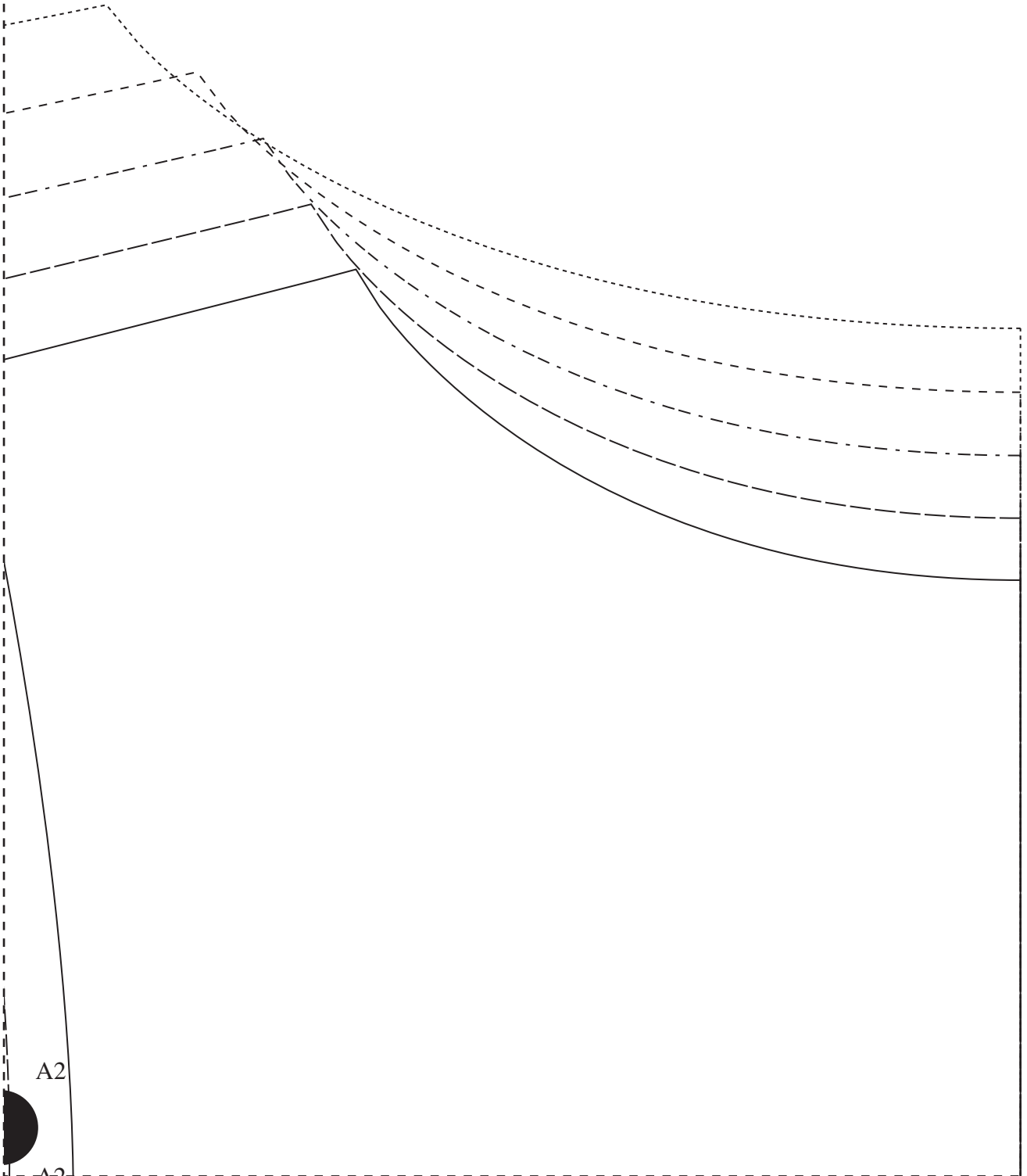


A2

A2



3



A2

4

ALYSSA KNIT DRESS

Front (1)

Sizes XS-XL

Fabric: Cut 1 on Fold

Lining: Cut 1 on Fold

3/8" SEAM ALLOWANCE 1" HEM ALLOWANCE

On lining pieces only, trim off
1/8" along the neckline and
armholes. This will make it so
the lining is not visible when
you wear your dress.

XS _____
S - - - - -
M - - - - -
L - - - - -
XL - - - - -

B1

B1



5

1/2



B1

B1

B2

B2

6

ALYSSA KNIT DRESS

Back (2)

Sizes XS-XL

Fabric: Cut 1 on Fold

Lining: Cut 1 on Fold

3/8" SEAM ALLOWANCE 1" HEM ALLOWANCE

On lining pieces only, trim off
1/8" along the neckline and
armholes. This will make it so
the lining is not visible when you
wear your dress.

XS _____

S - - - - -

M - - - - -

L - - - - -

XL

B2

B2



7

CENTER FRONT



C1



C1

8



C1

C1

C2

C2



9



C2

C2

CENTER BACK



10



D1



D1

11



D1

D1

D2



D2

12



D2



D2

13



14



15

