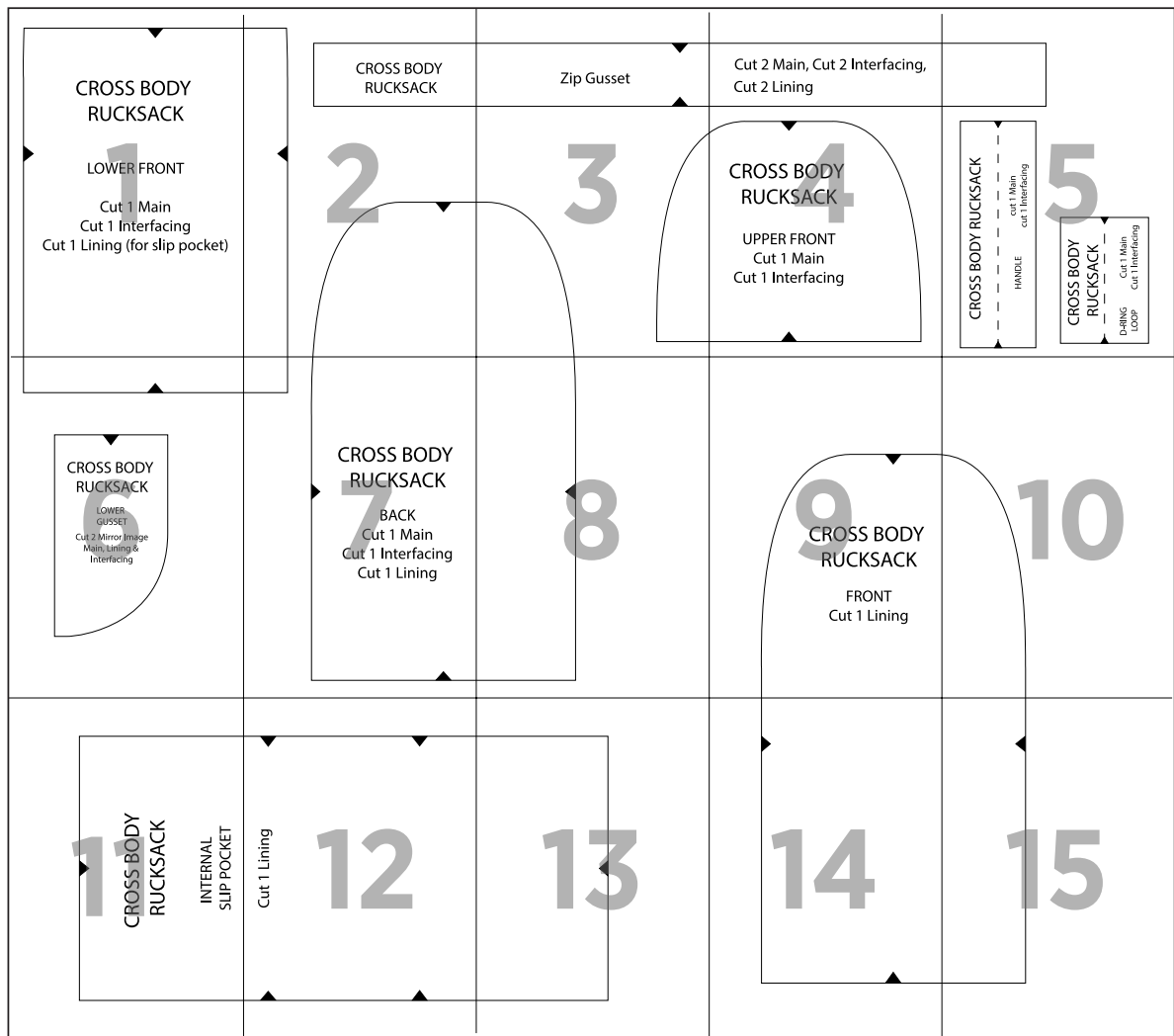


Rucksack



1



CROSS BODY RUCKSACK

LOWER FRONT

Cut 1 Main
Cut 1 Interfacing
Cut 1 Lining (for slip pocket)

TEST SQUARE
4cm x 4cm

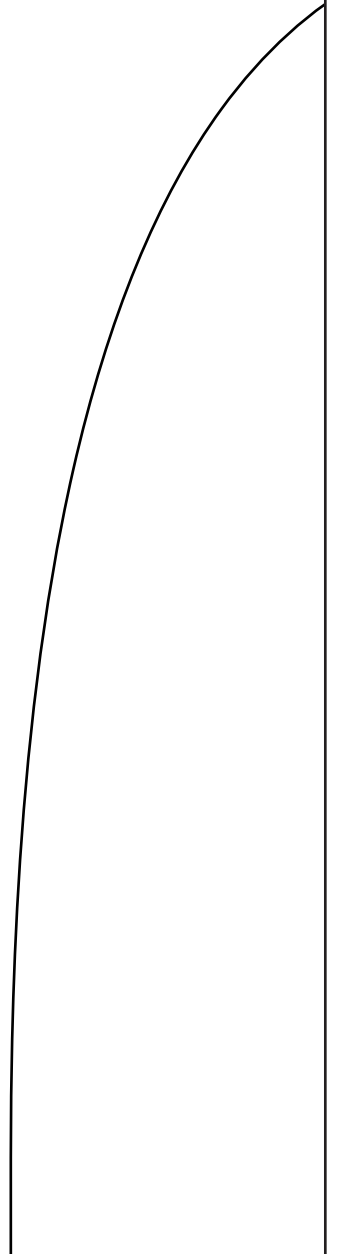
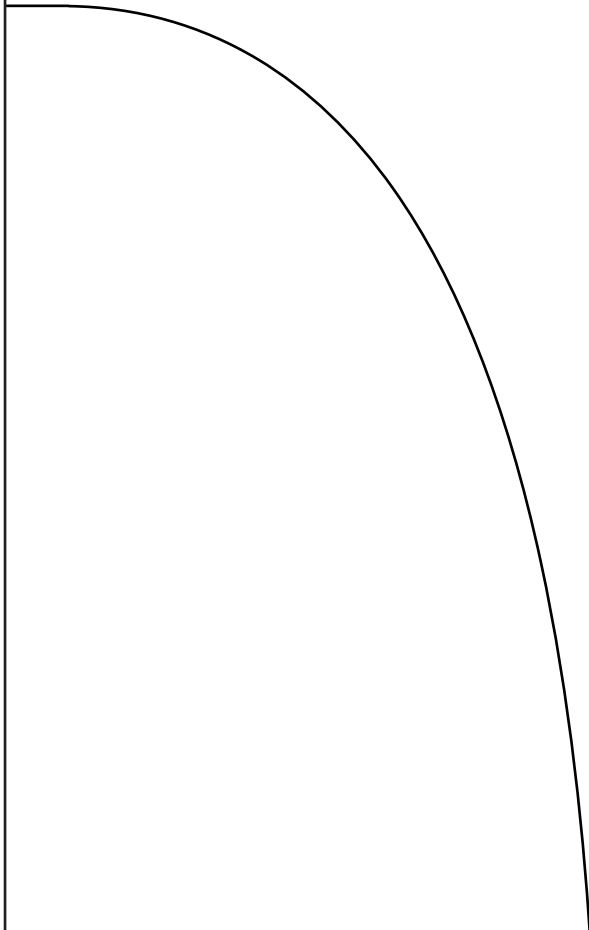
2

CROSS BODY RUCKSACK



3

Zip Gusset



4

Cut 2 Main, Cut 2 Interfacing,
Cut 2 Lining

A large diagram showing the shape of the upper front piece of a cross body rucksack. It is a rounded rectangle with a curved top edge. A small black triangle points downwards from the top center, and another small black triangle points upwards from the bottom center.

CROSS BODY RUCKSACK

UPPER FRONT
Cut 1 Main
Cut 1 Interfacing

CROSS BODY RUCKSACK

HANDLE

cut 1 Main
cut 1 Interfacing

CROSS BODY RUCKSACK

D-RING LOOP Cut 1 Main
 Cut 1 Interfacing



6



CROSS BODY RUCKSACK

LOWER
GUSSET

Cut 2 Mirror Image
Main, Lining &
Interfacing

7



CROSS BODY RUCKSACK

BACK

Cut 1 Main

Cut 1 Interfacing

Cut 1 Lining

8



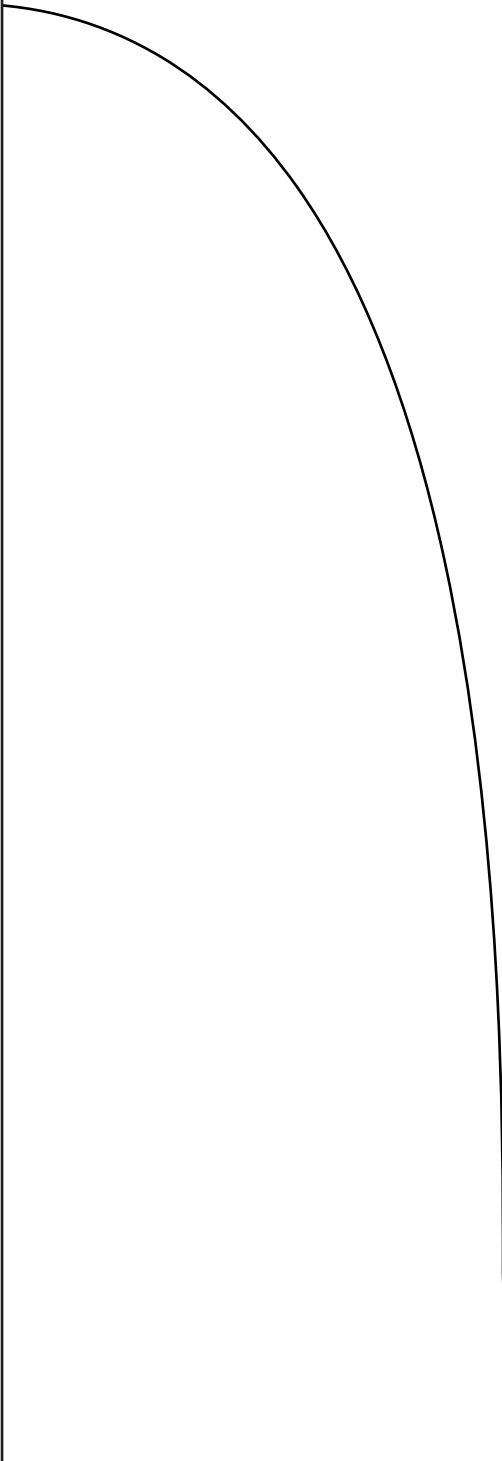
9

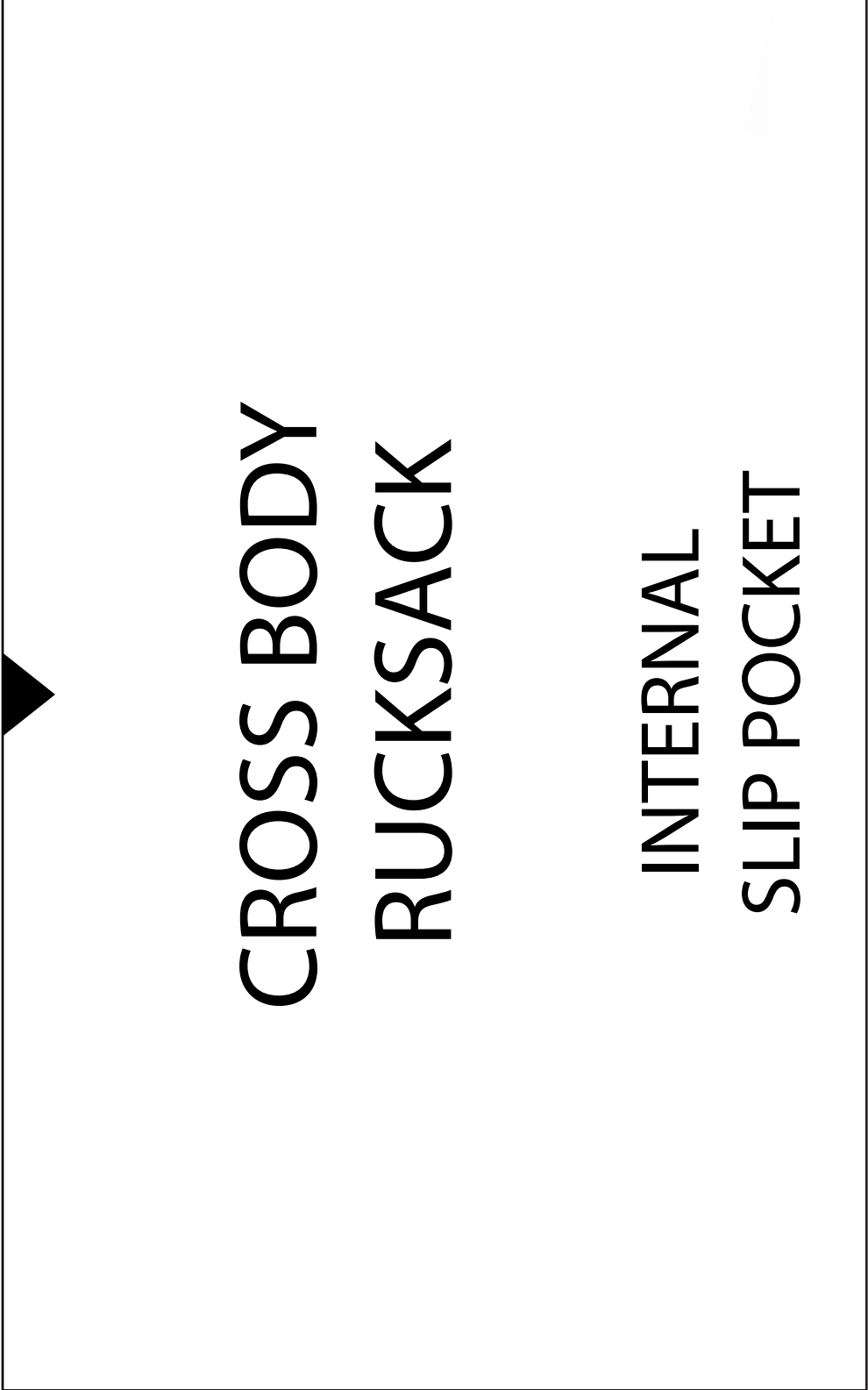


CROSS BODY RUCKSACK

FRONT
Cut 1 Lining

10





12

Cut 1 Lining



13



14



15

