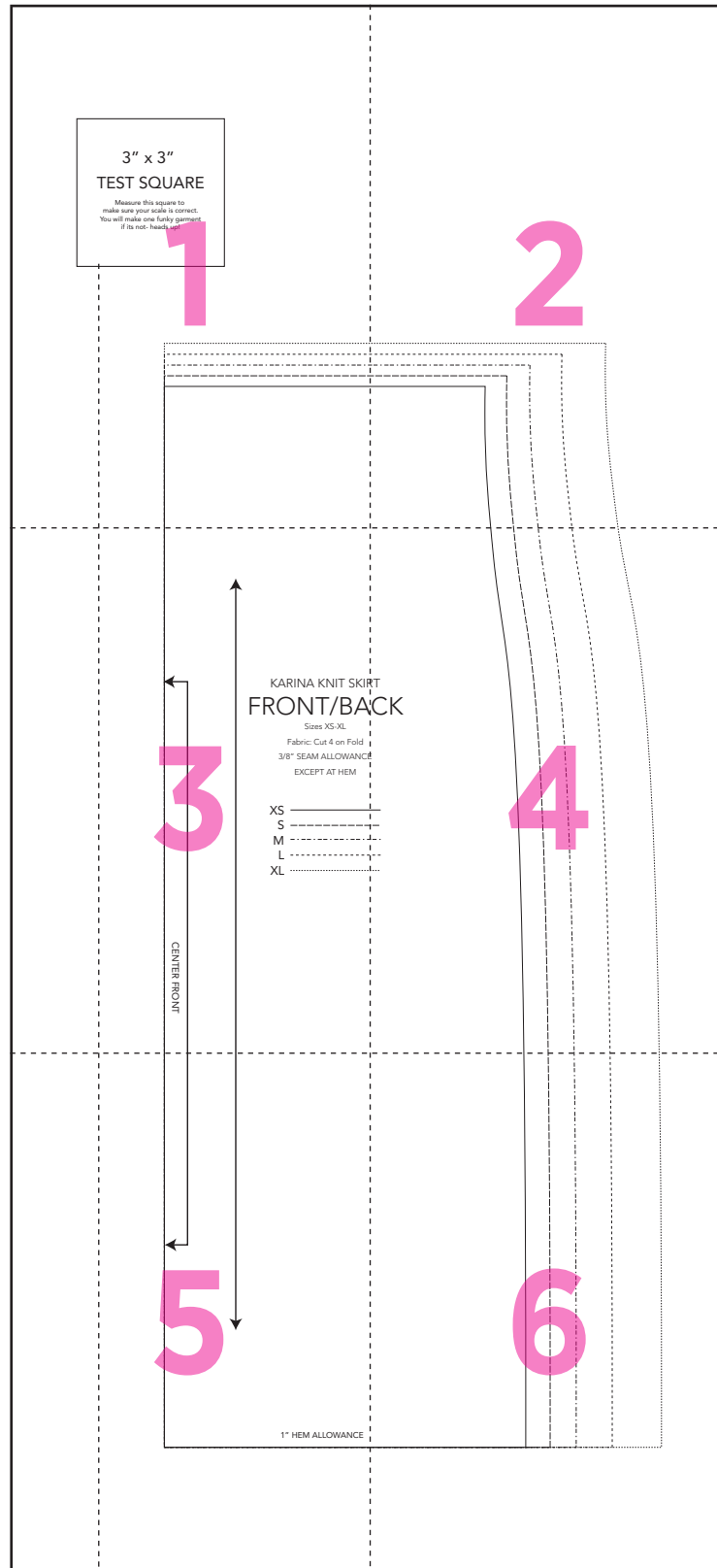


# Plaid pencil skirt



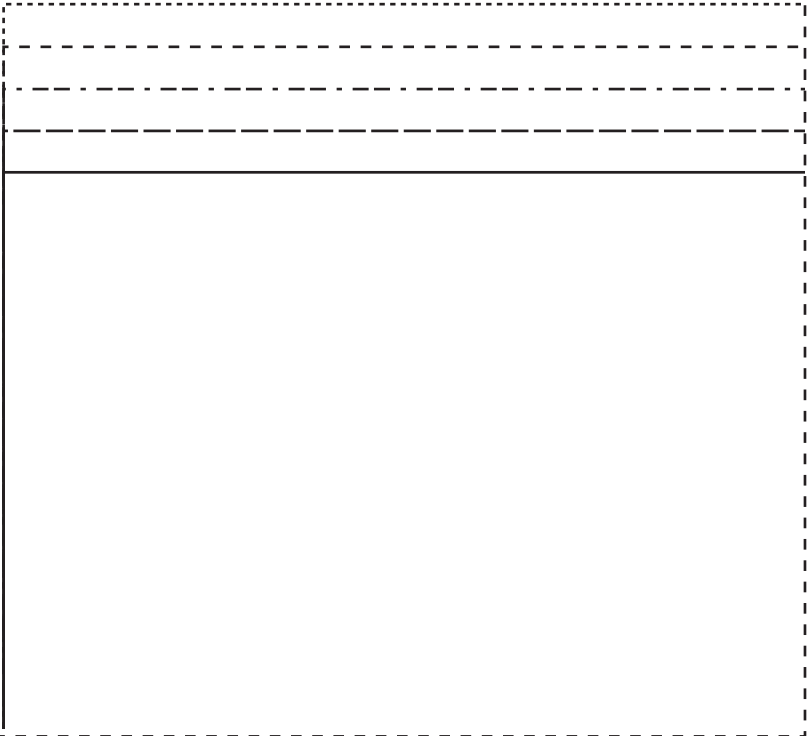
1



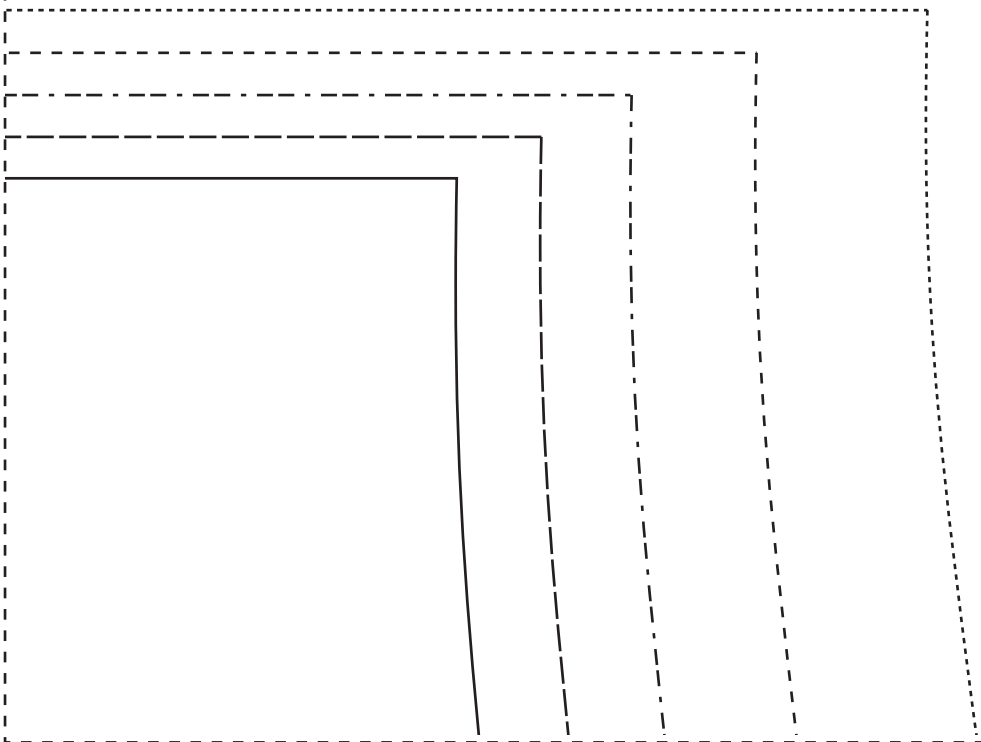
3" x 3"

**TEST SQUARE**

Measure this square to  
make sure your scale is correct.  
You will make one funky garment  
if its not- heads up!



2



3



# KARINA KNIT SKIRT FRONT/BACK

Sizes XS-XL

Fabric: Cut 4 on Fold

3/8" SEAM ALLOWANCE

EXCEPT AT HEM

- XS \_\_\_\_\_
- S \_\_\_\_\_
- M \_\_\_\_\_
- L \_\_\_\_\_
- XL \_\_\_\_\_

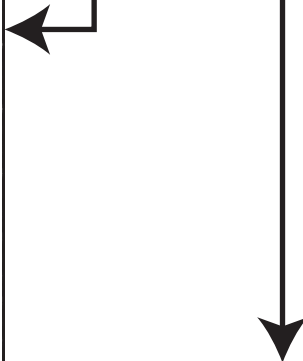
CENTER FRONT

4

RT  
CK



5



1" HEM ALLOWANCE

6

