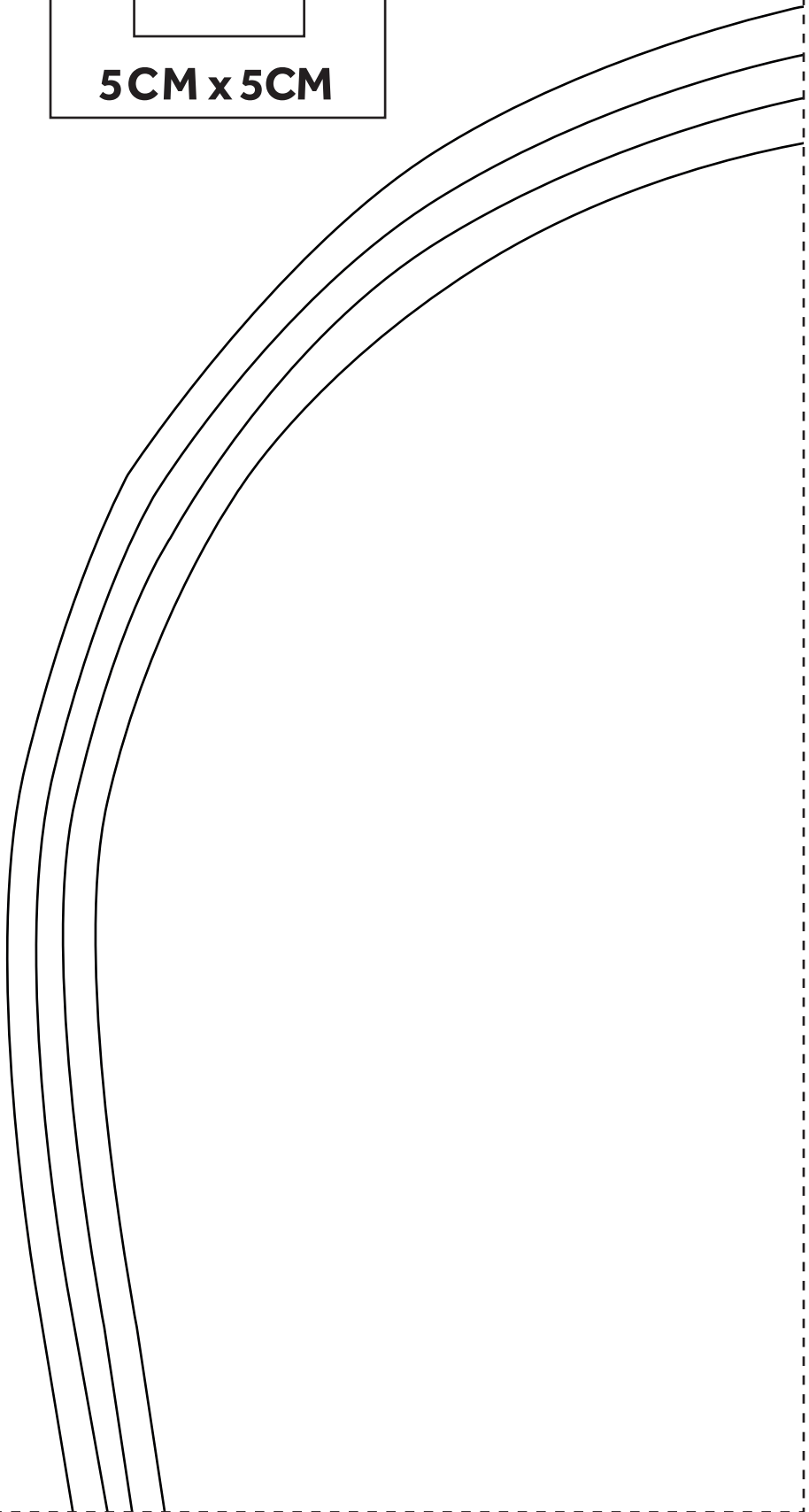
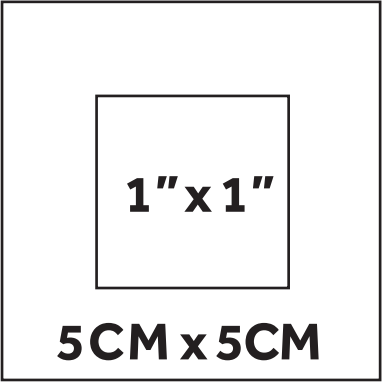
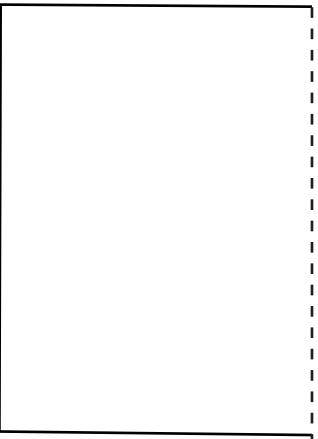
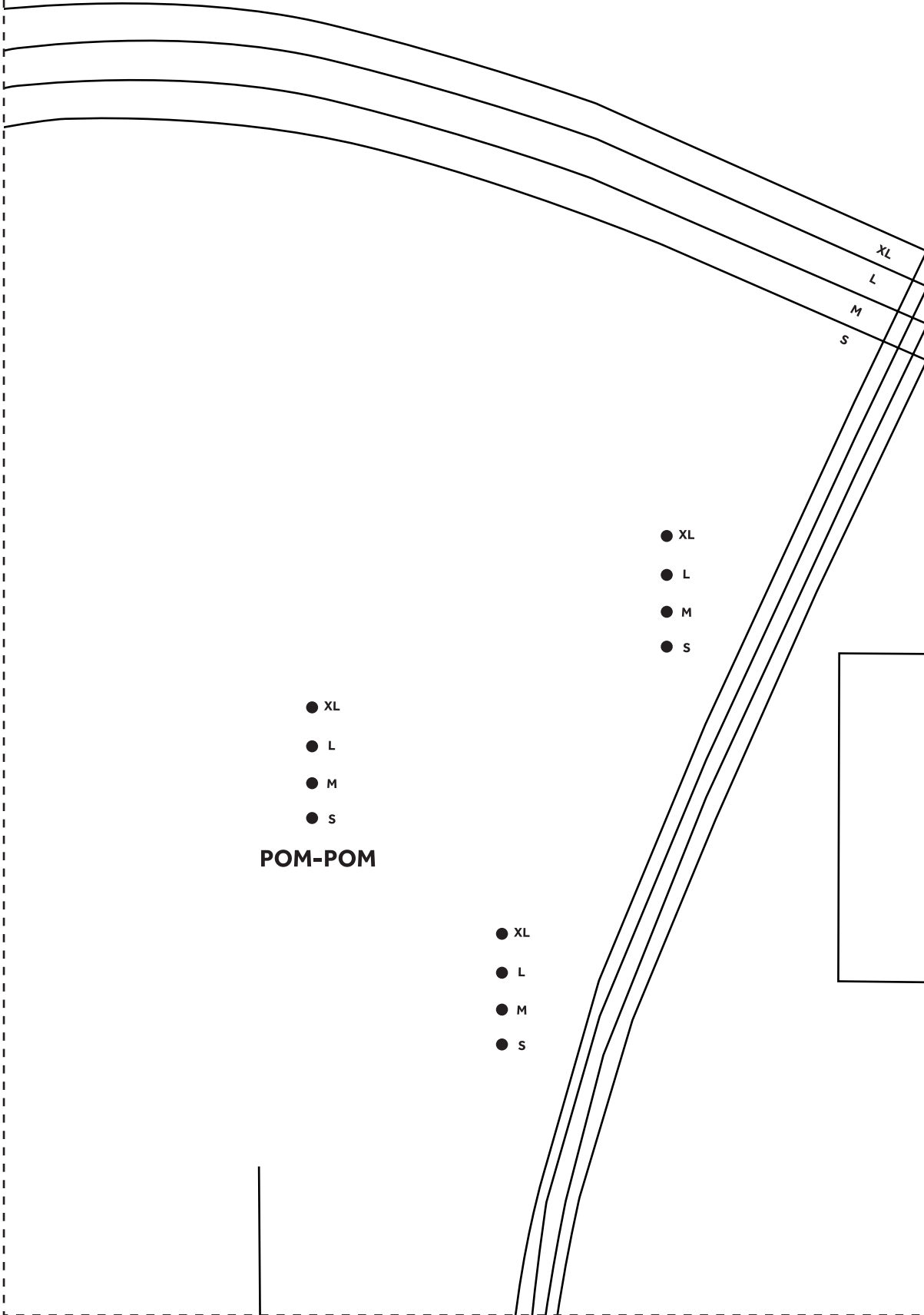




1



2



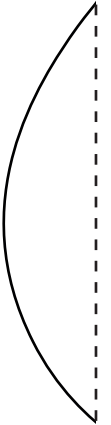
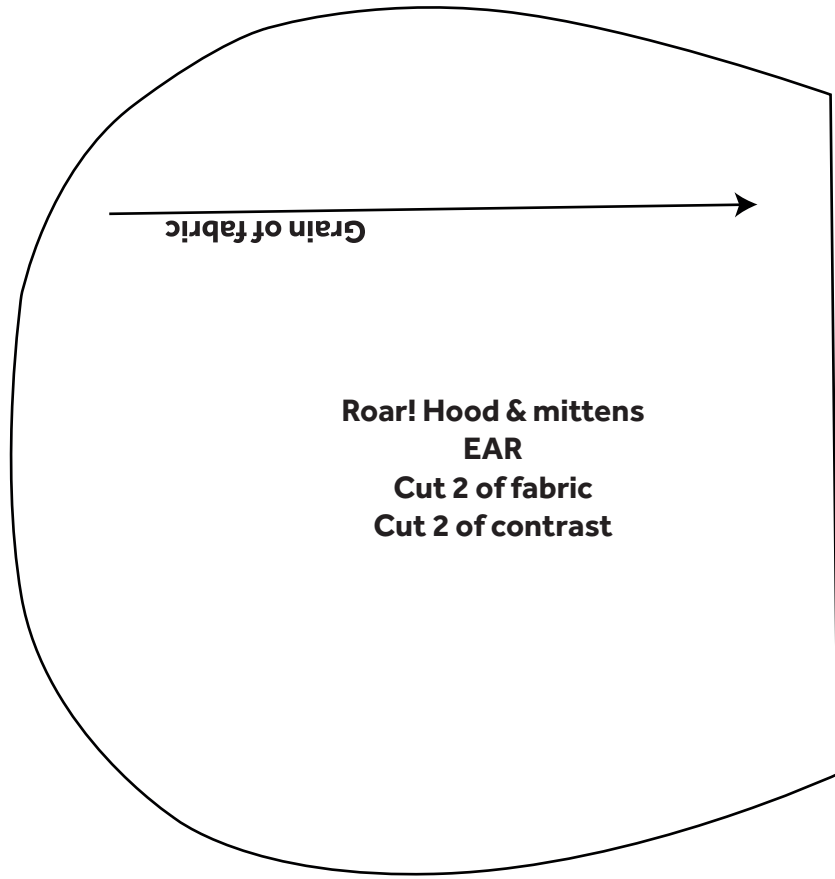
- XL
- L
- M
- S

**POM-POM**

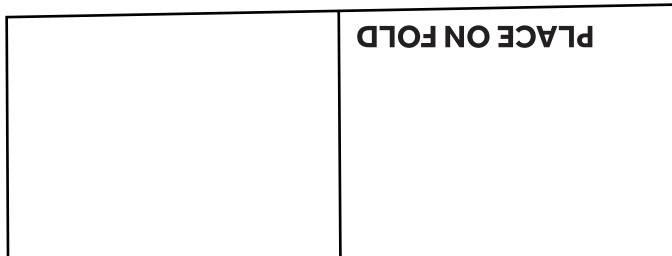
- XL
- L
- M
- S

- XL
- L
- M
- S

**3**



**Roar! Hood & mittens  
GUIDE FOR POM-POM**





Roar! Hood & mittens  
MITTEN UPPER FRONT  
Size L  
Cut 2 of fabric

Grain of fabric

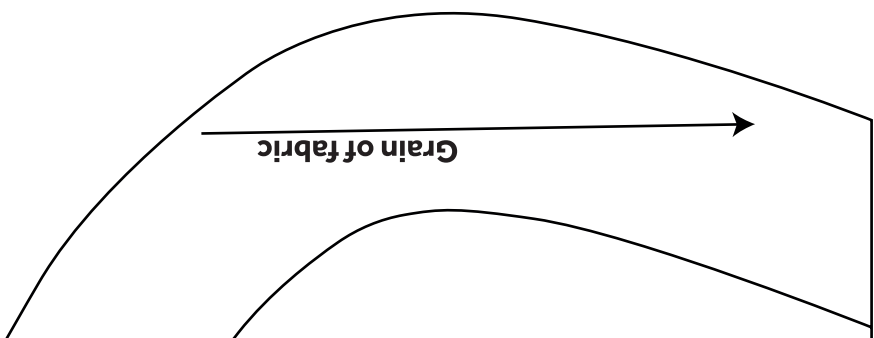
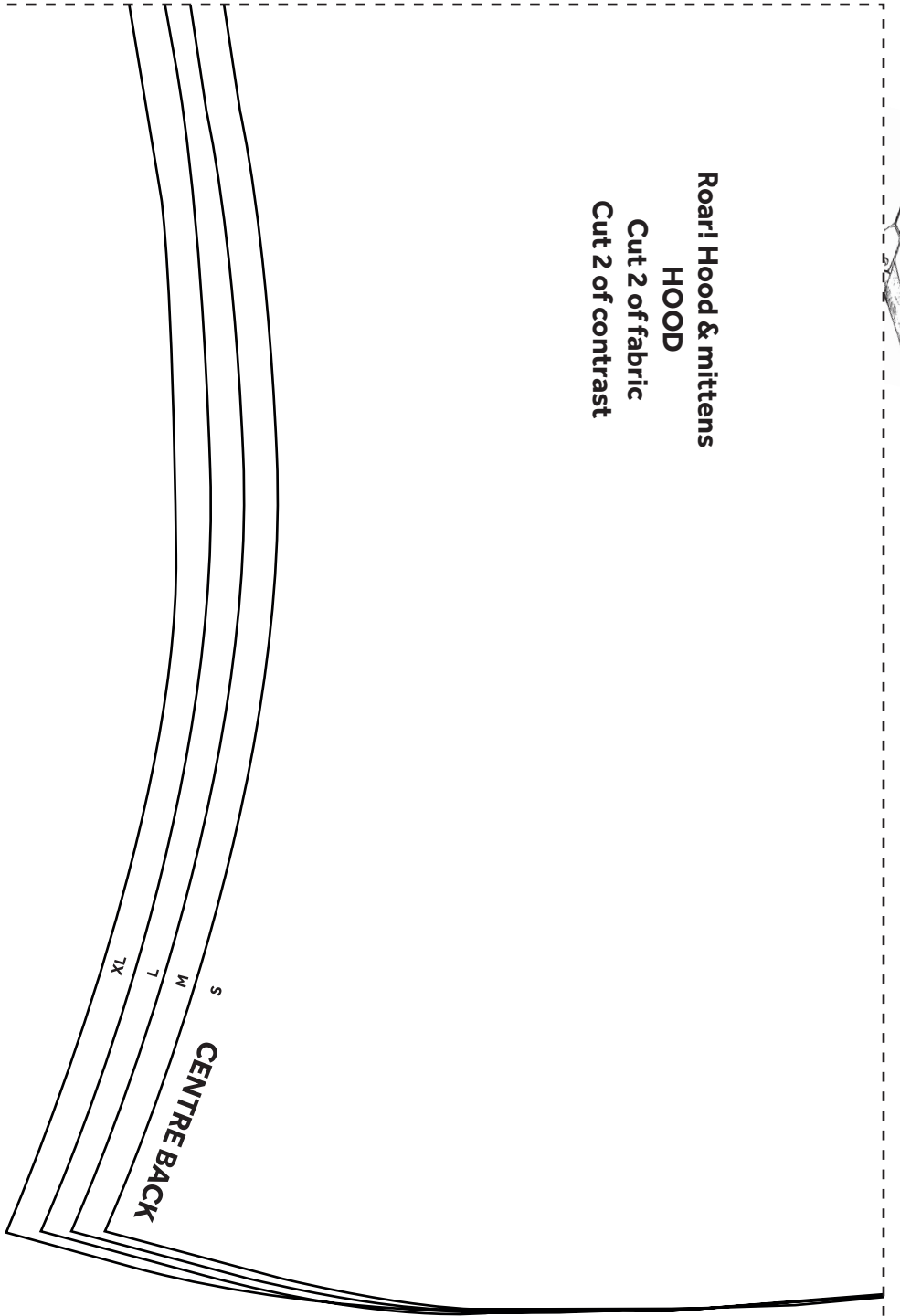
PLACEMENT LINES



**Roar! Hood & mittens**

**HOOD**

**Cut 2 of fabric**  
**Cut 2 of contrast**



**5**

6

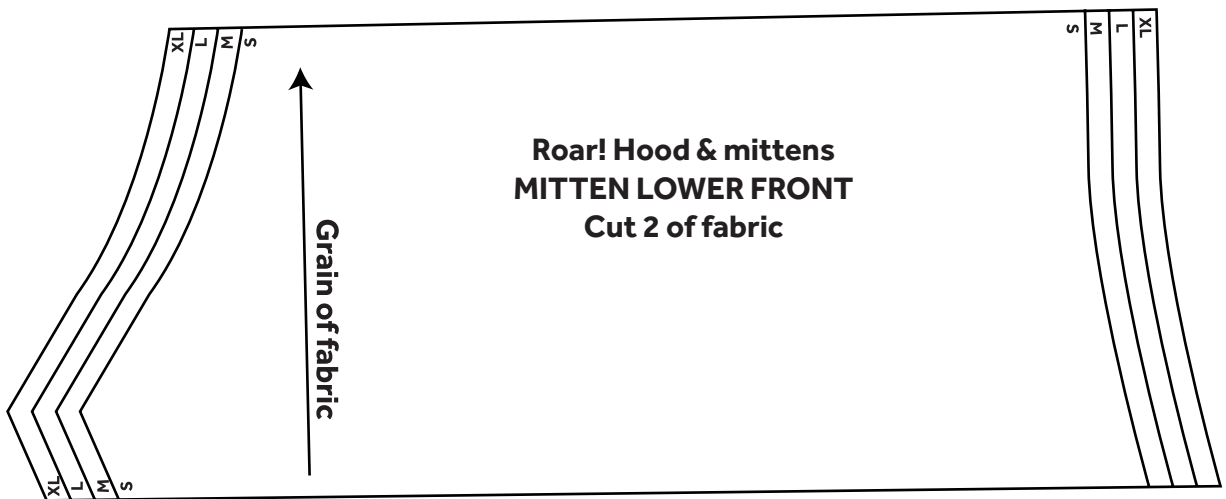
Grain of fabric



**BUTTONS AND  
BUTTONHOLES**



**BOTTOM EDGE**

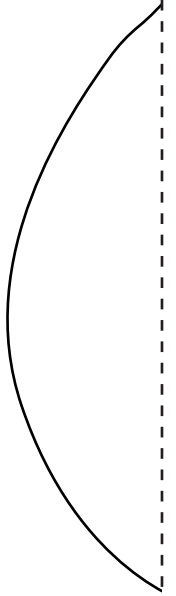


**Roar! Hood & mittens  
MITTEN LOWER FRONT  
Cut 2 of fabric**

7

FOLDLINE

Roar! Hood  
& mittens  
HOOD BAND  
Cut 2 on fold  
of contrast



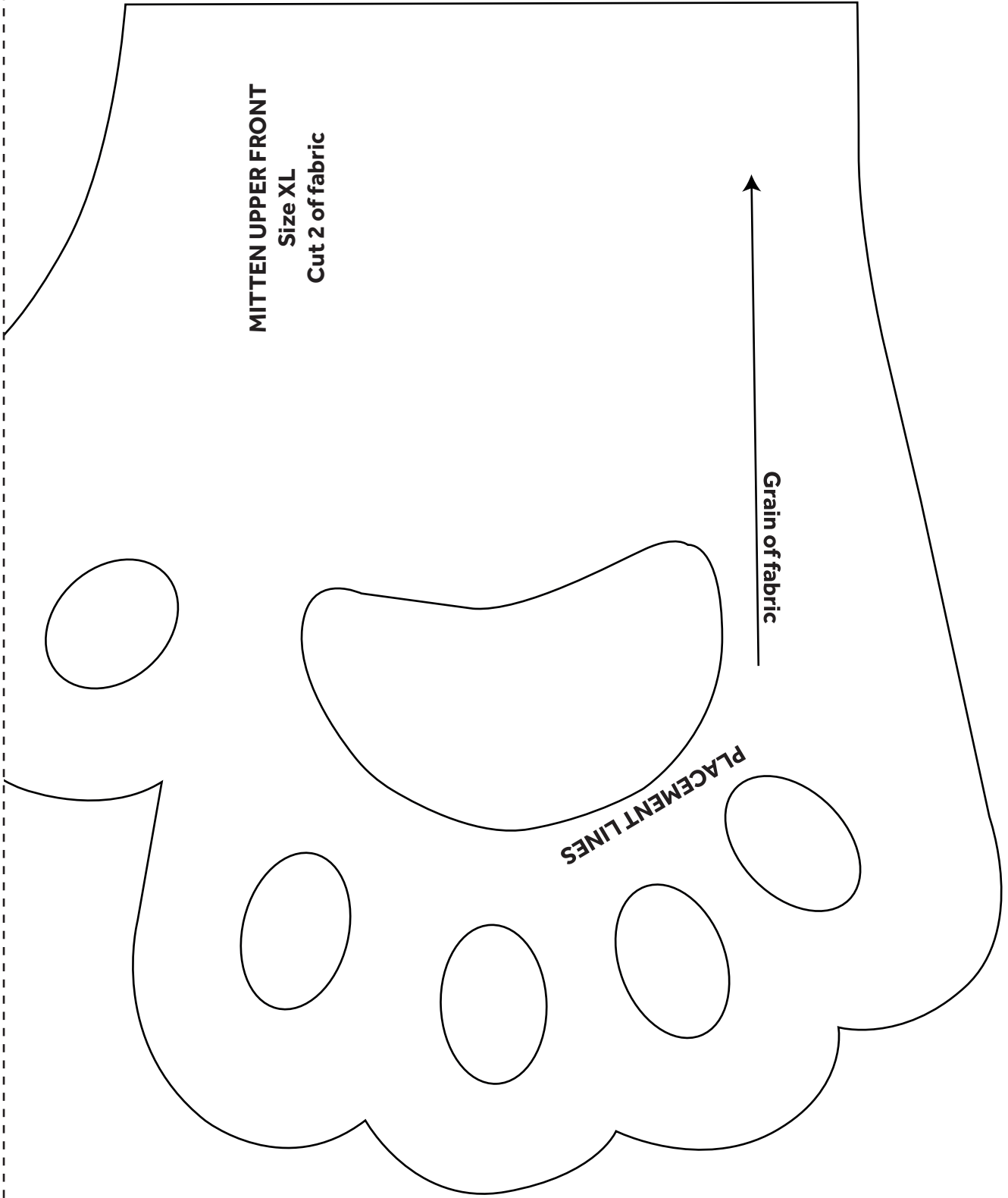




**MITTEN UPPER FRONT**  
Size XL  
Cut 2 of fabric

Grain of fabric

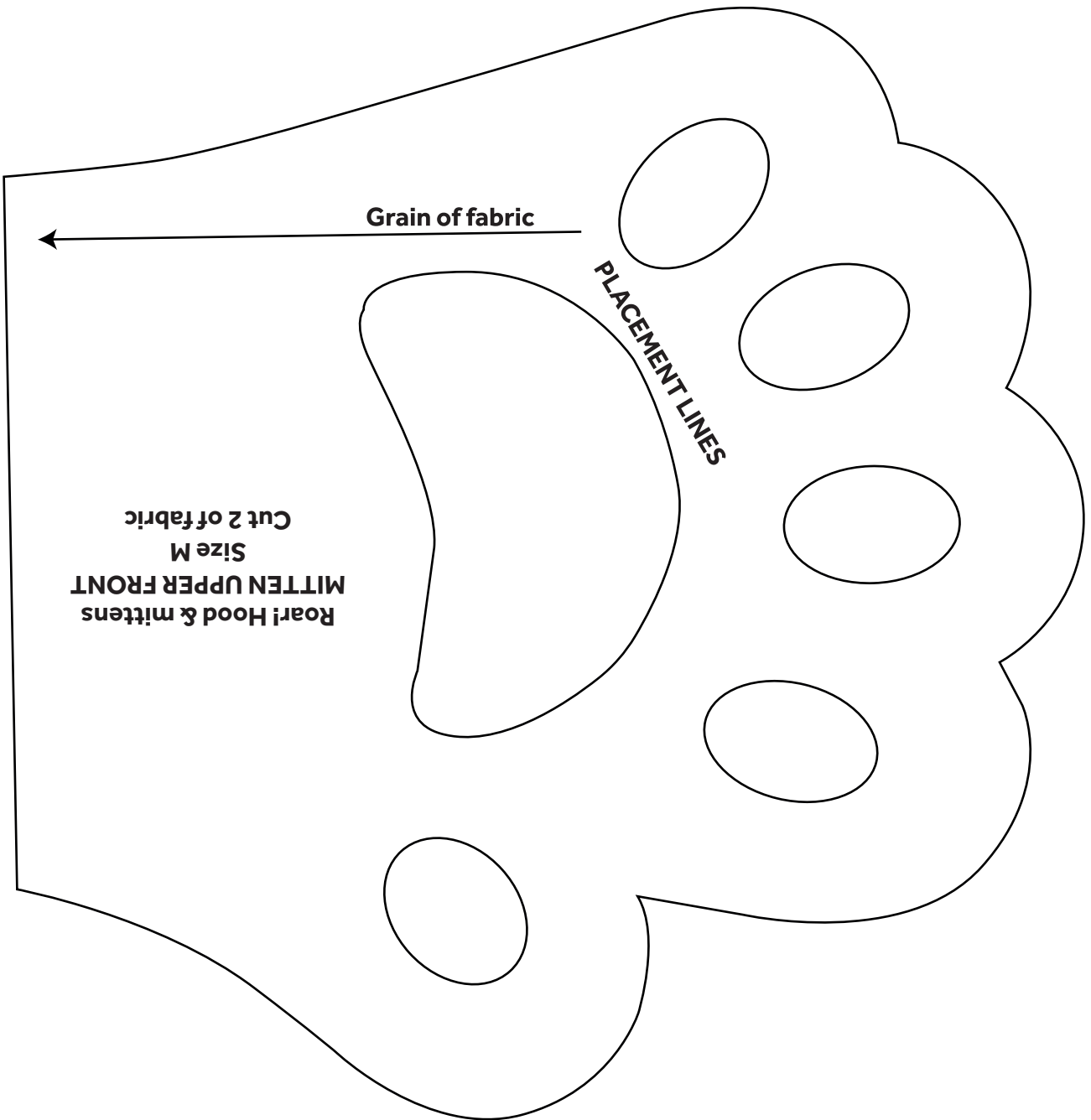
PLACEMENT LINES

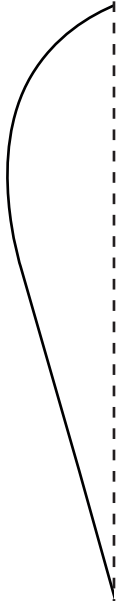
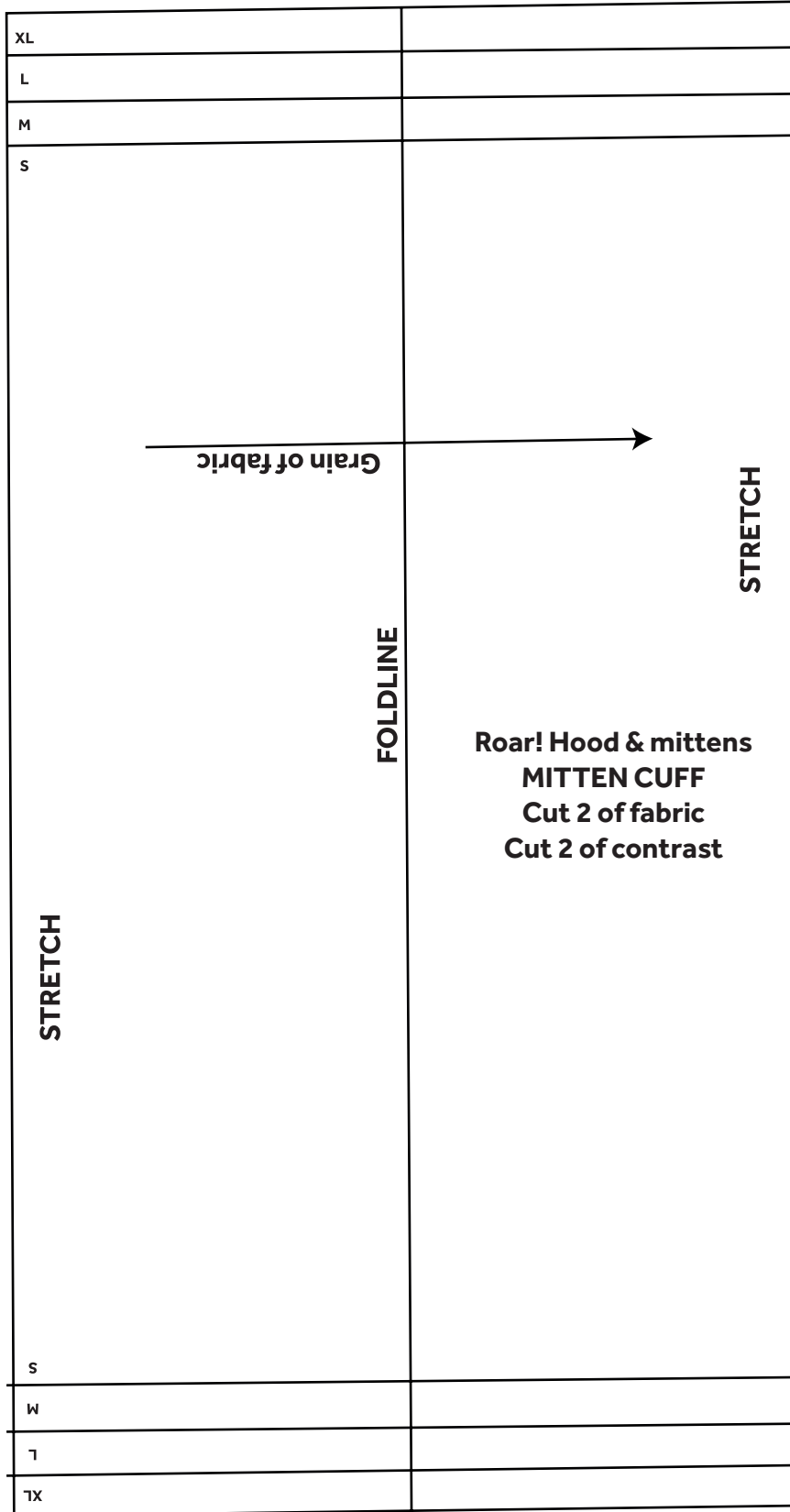


9

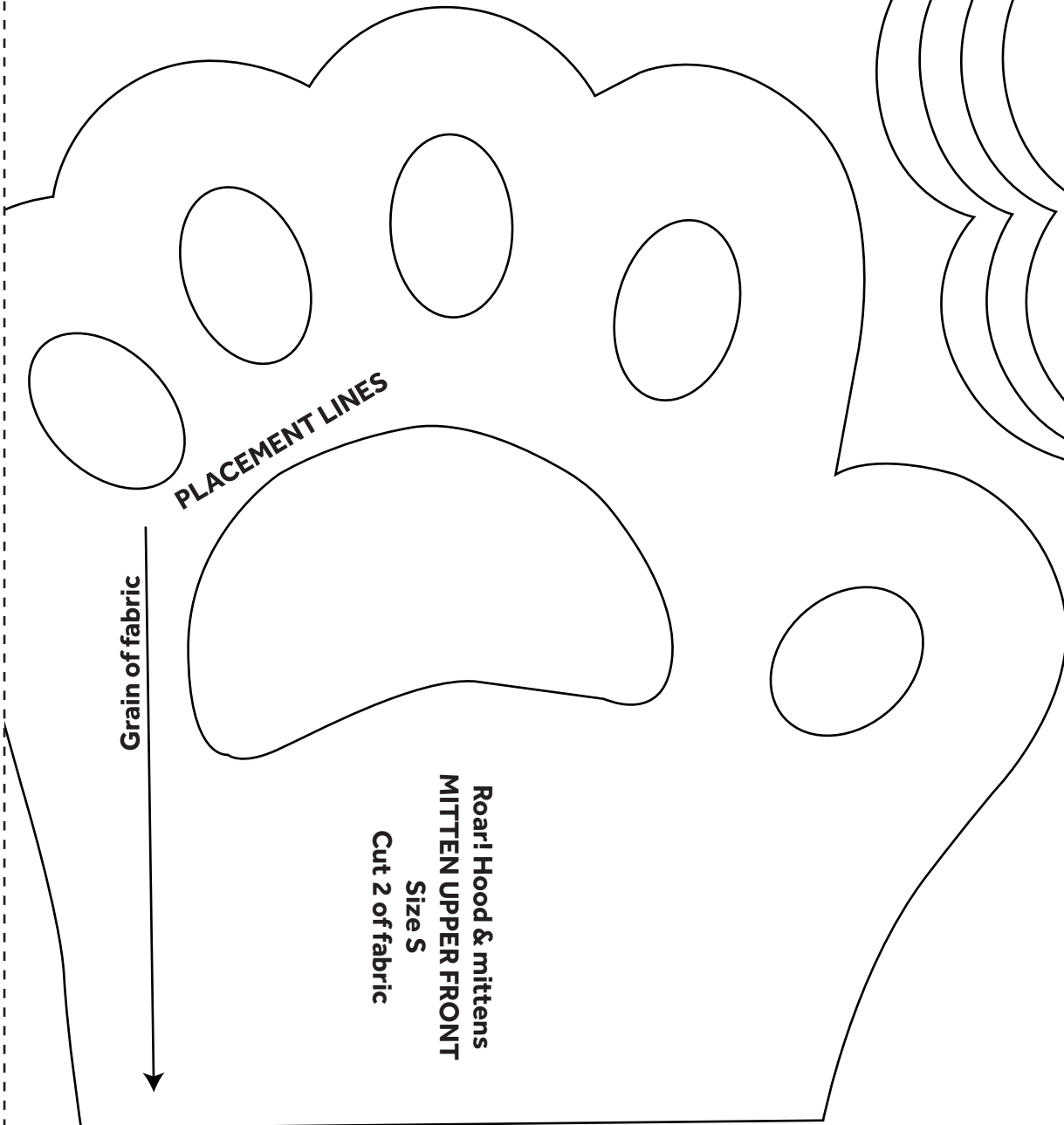
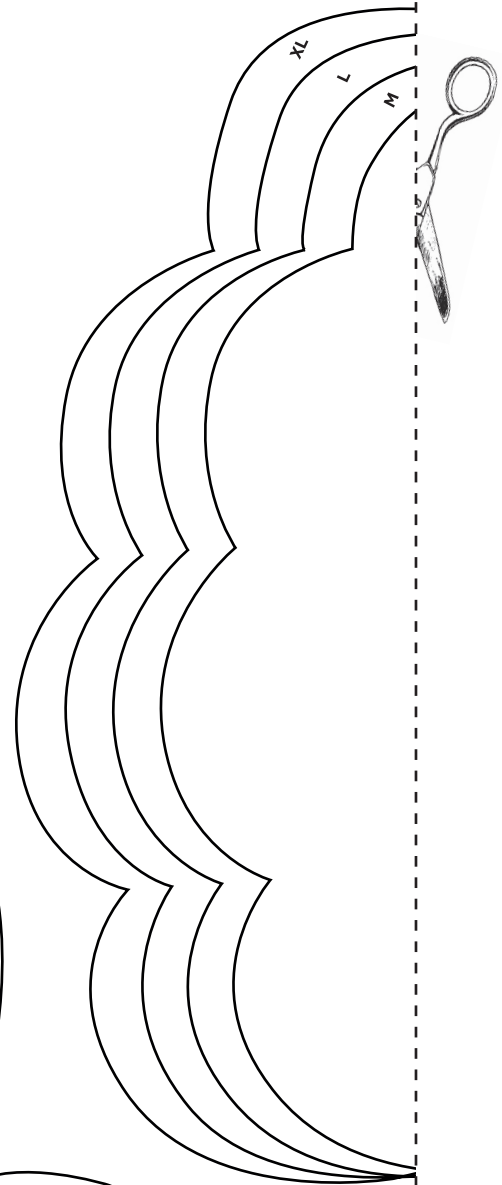
Roar! Hood & mittens  
EAR  
Cut 2 of fabric  
Cut 2 of contrast

PLACEMENT LINES





S	
M	
L	
XL	



PLACEMENT LINES

Roar! Hood & mittens  
MITTEN UPPER FRONT  
Size S  
Cut 2 of fabric

# 12

