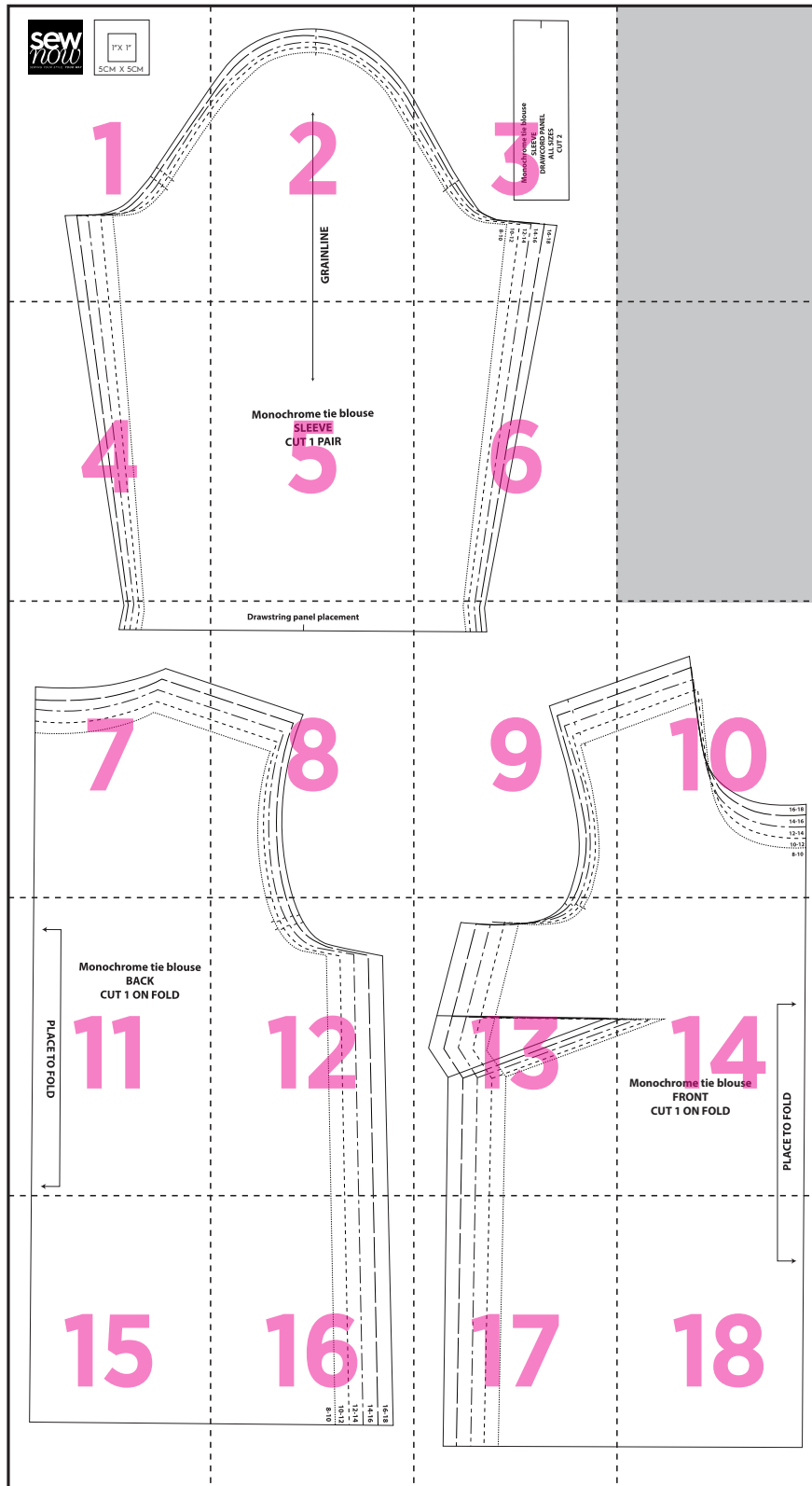
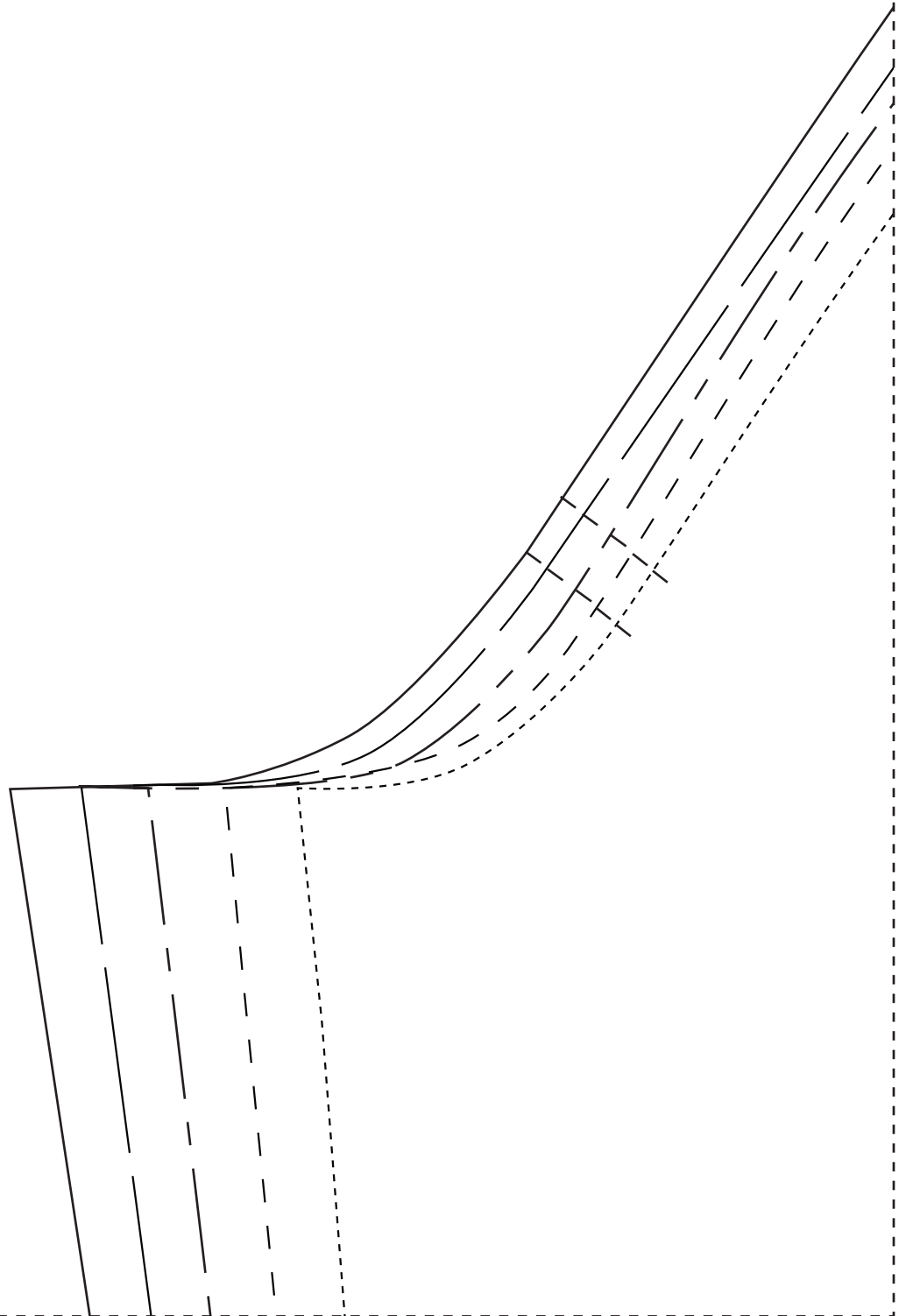
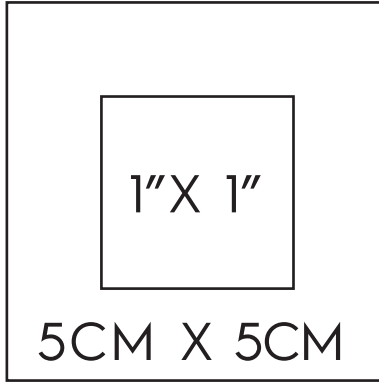


Monochrome tie blouse



1



2



GRAINLINE

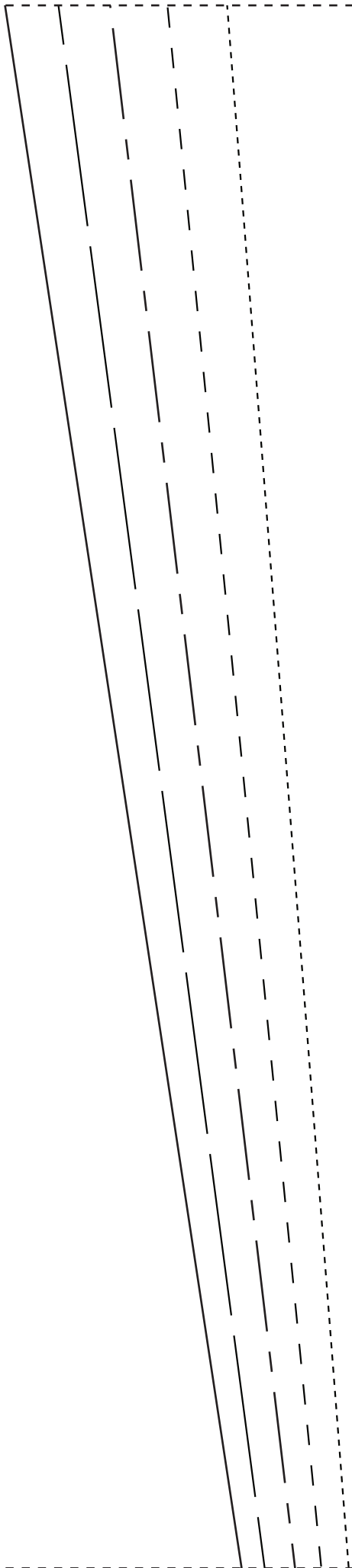
3

Monochrome tie blouse
SLEEVE
DRAWCORD PANEL
ALL SIZES
CUT 2

16-18
14-16
12-14
10-12
8-10



4

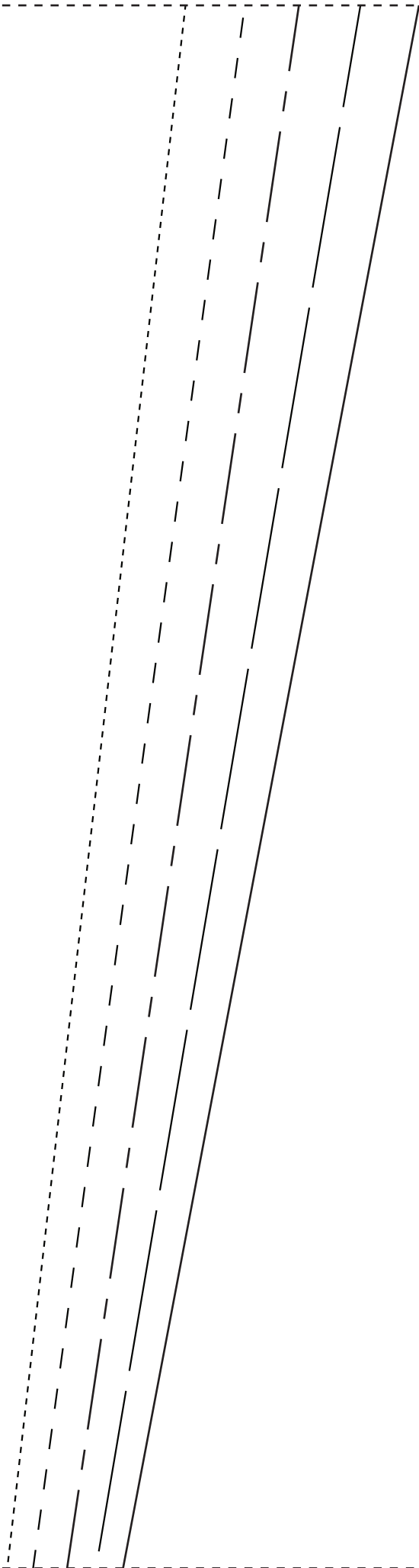


5

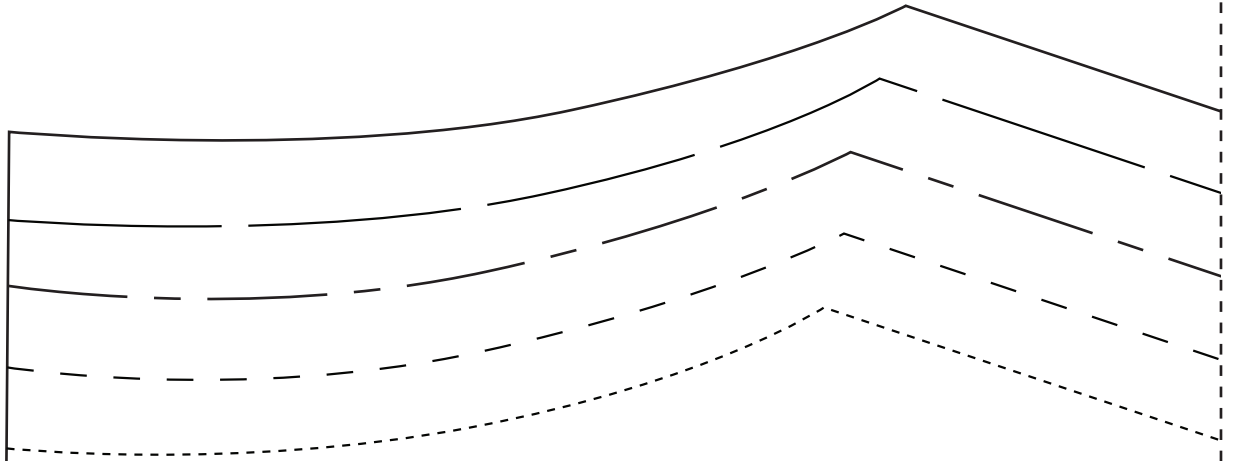
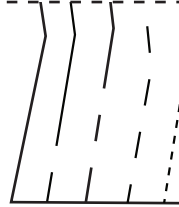


**Monochrome tie blouse
SLEEVE
CUT 1 PAIR**

6

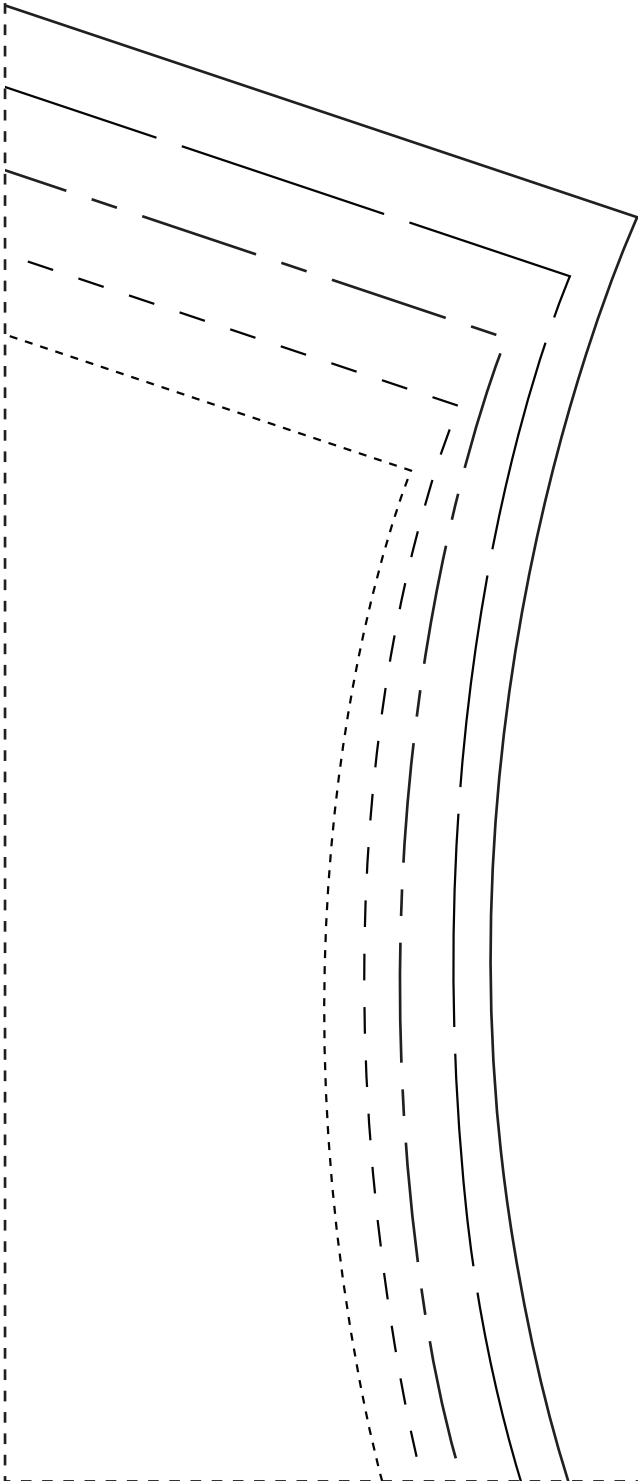


7

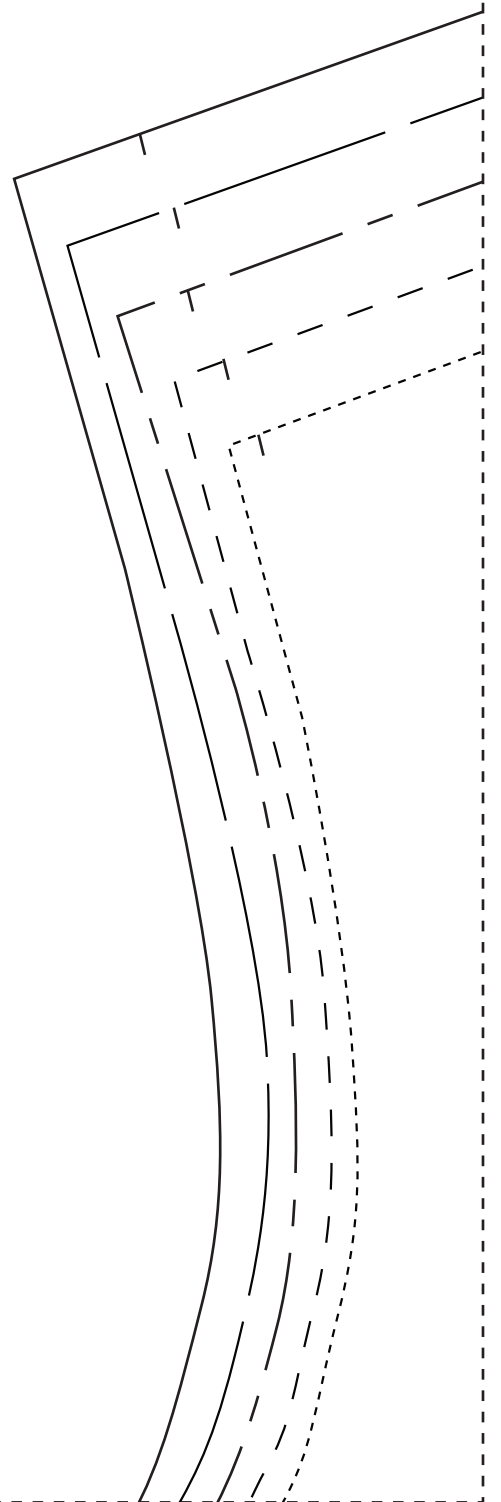
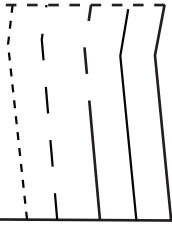


8

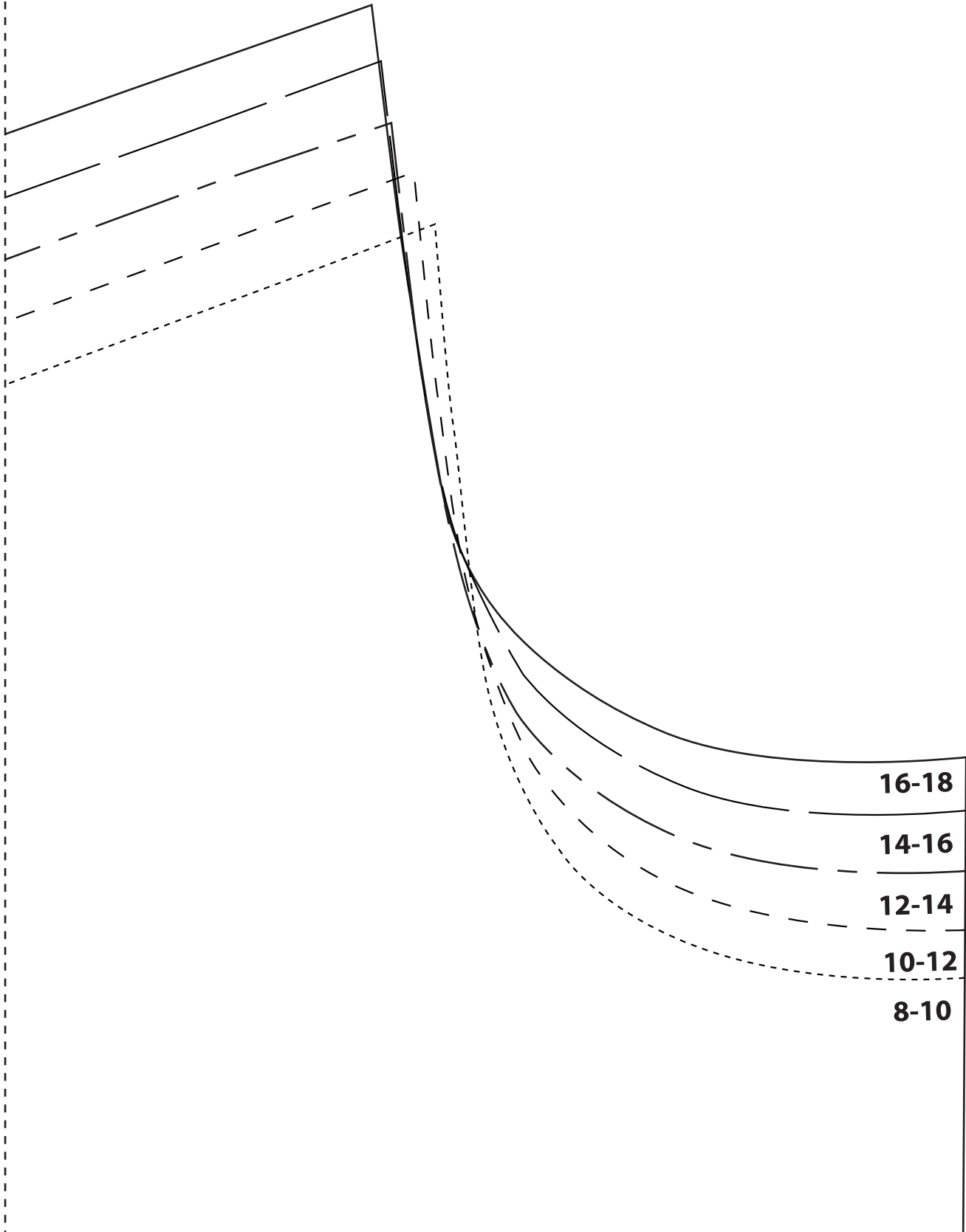
Drawstring panel placement



9



10



11

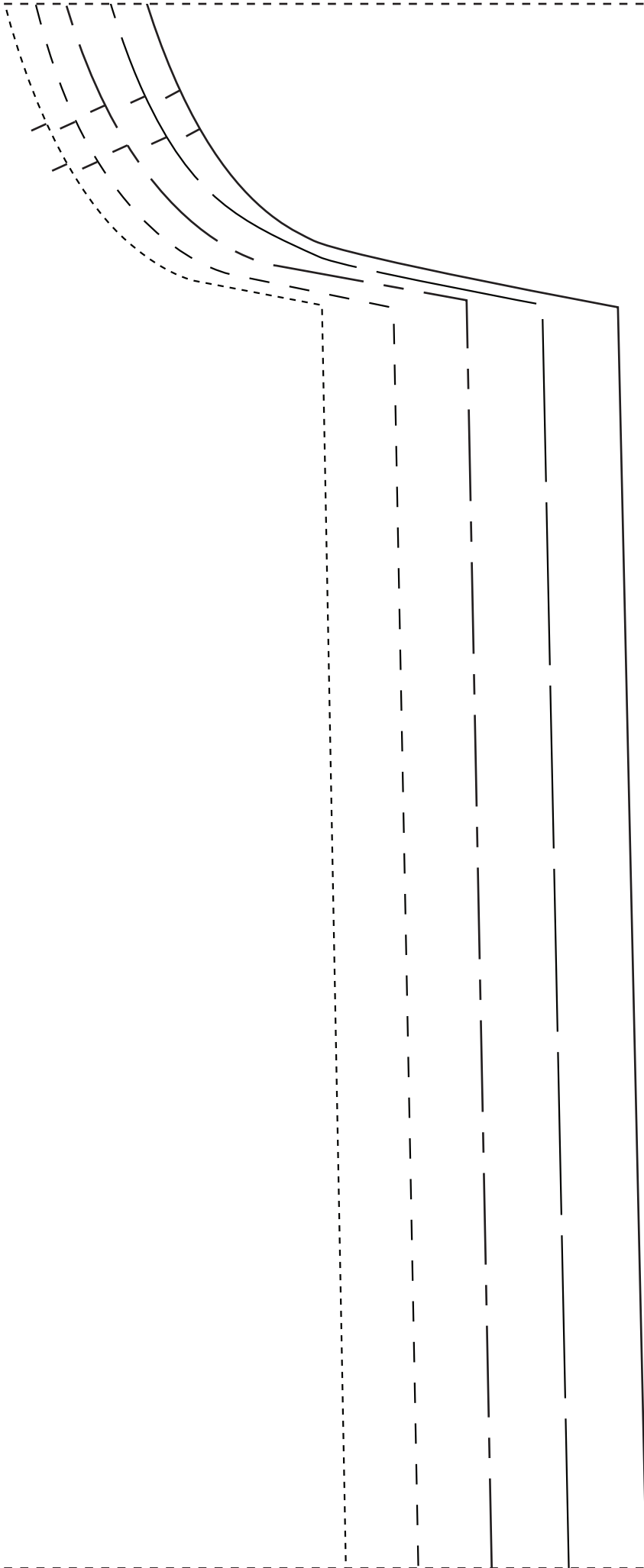


**Monochrome tie blouse
BACK
CUT 1 ON FOLD**

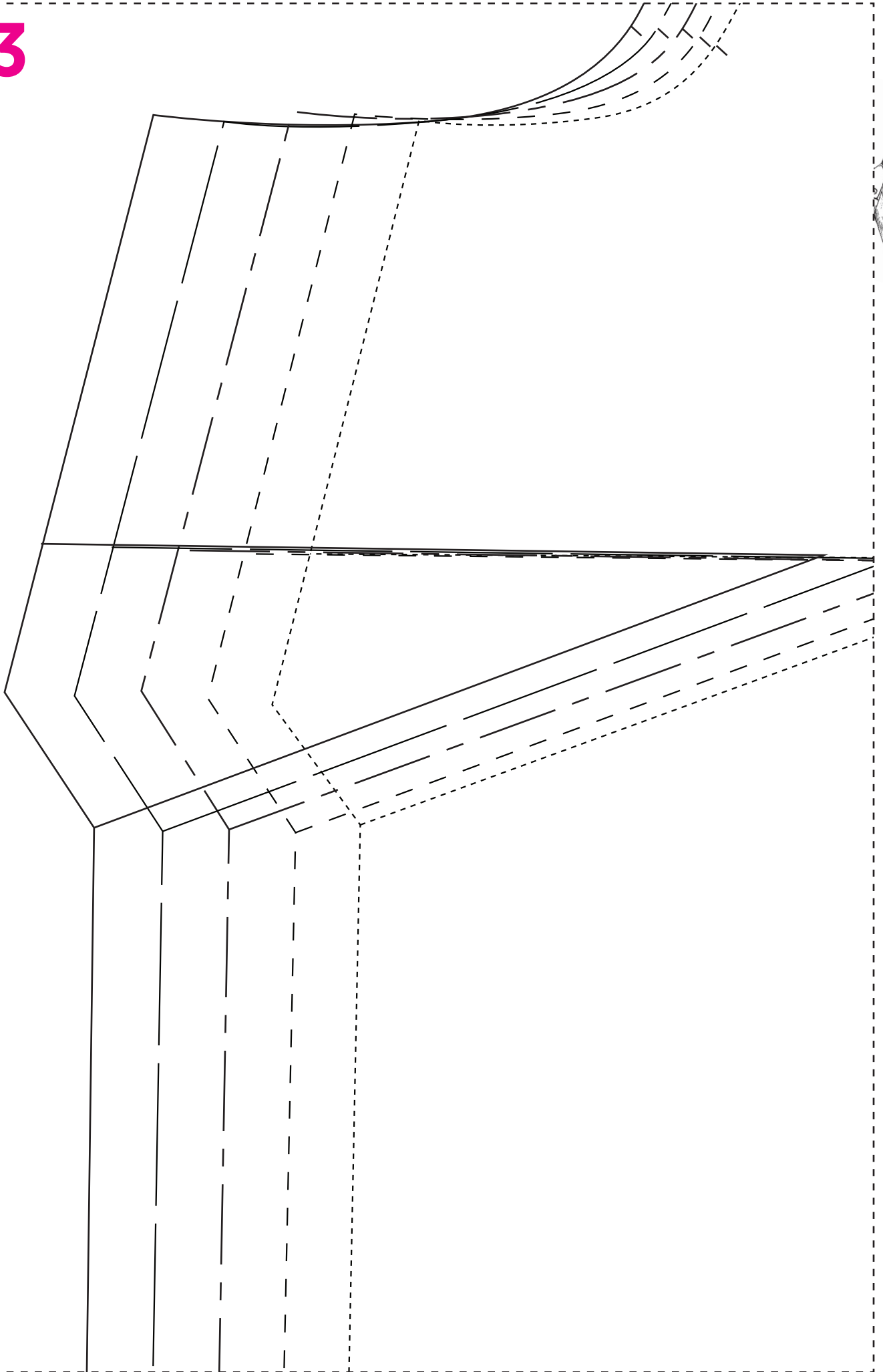
PLACE TO FOLD



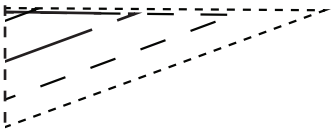
12



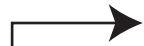
13



14



**Monochrome tie blouse
FRONT
CUT 1 ON FOLD**



PLACE TO FOLD

15





16-18

14-16

12-14

10-12

8-10

17



18

