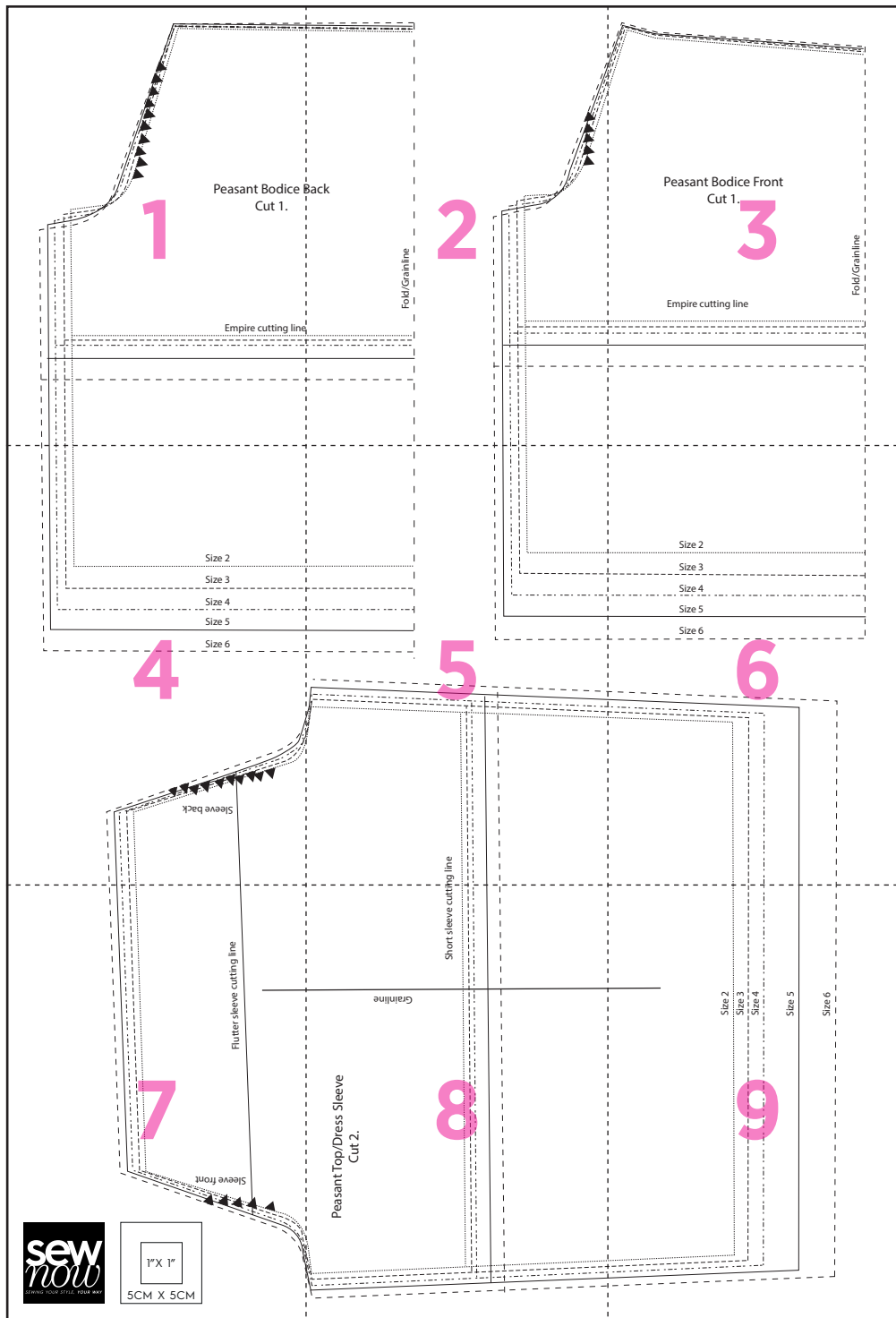
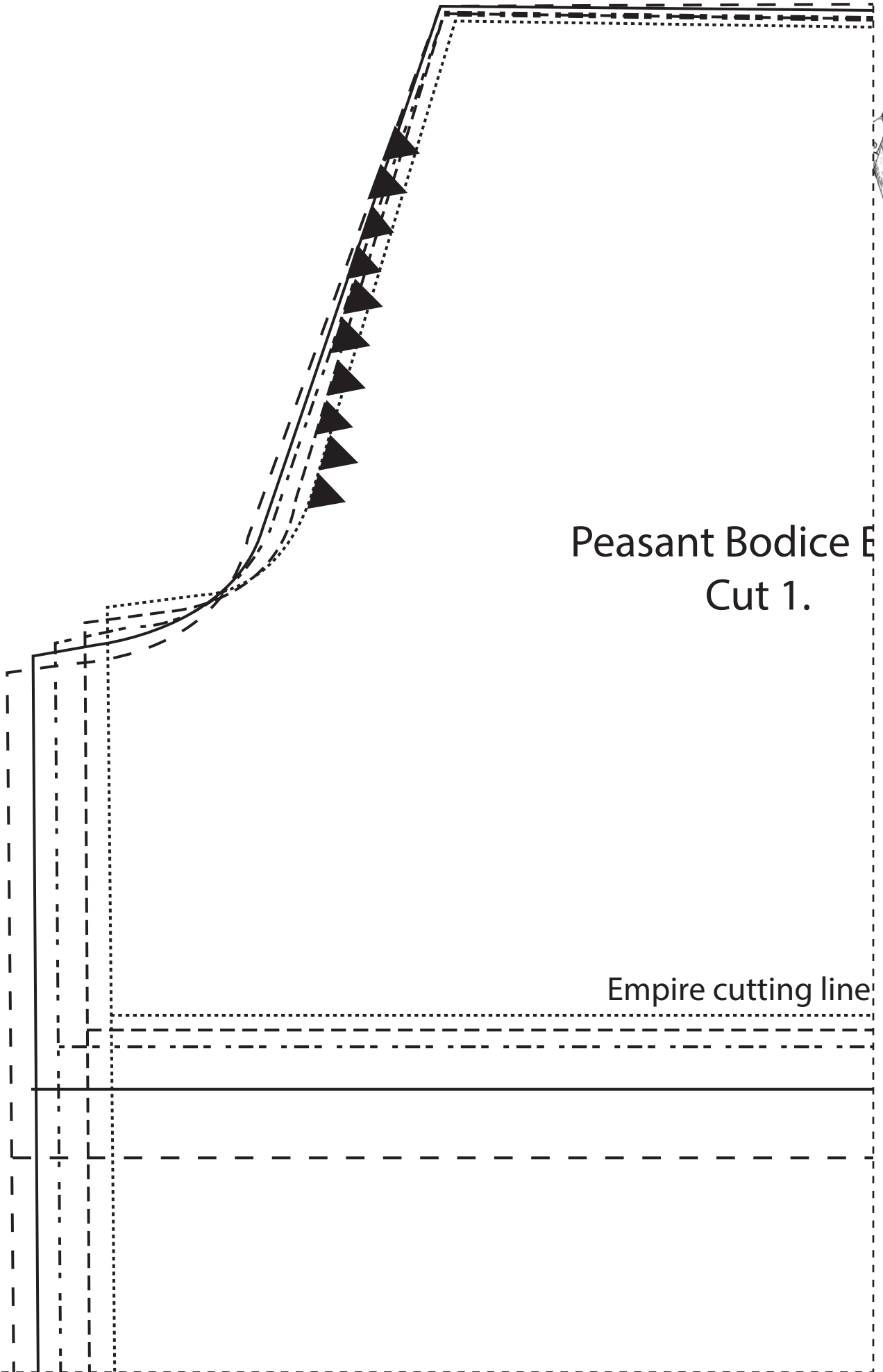


Ruffled empire peasant top



1



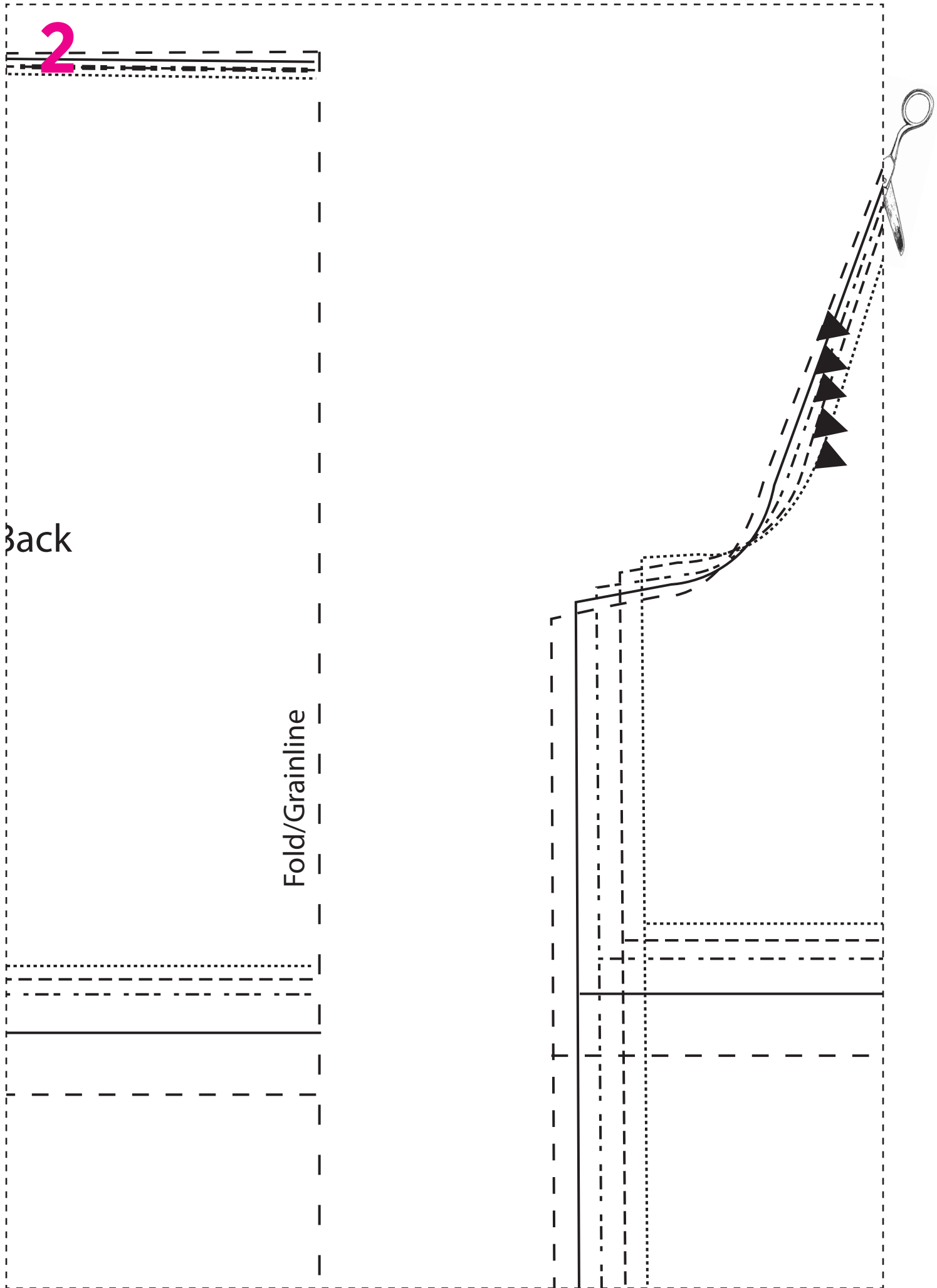
Peasant Bodice E
Cut 1.

Empire cutting line

2

Back

Fold/Grainline





3

Peasant Bodice Front Cut 1.

Fold/Grainline

Empire cutting line

4



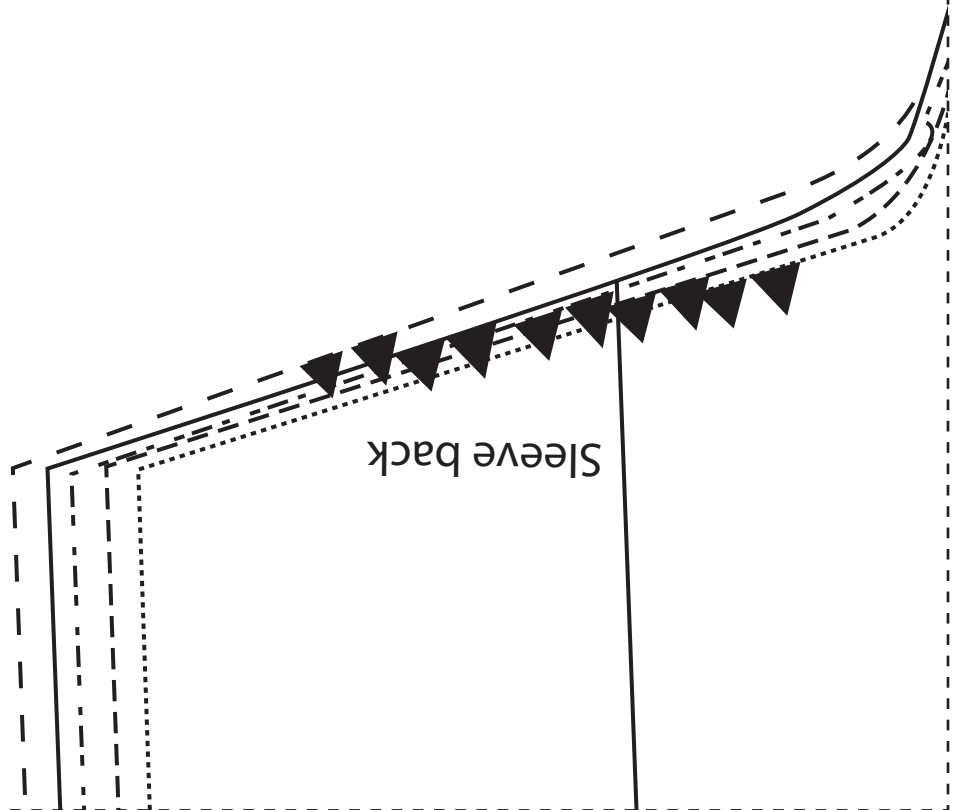
Size 2

Size 3

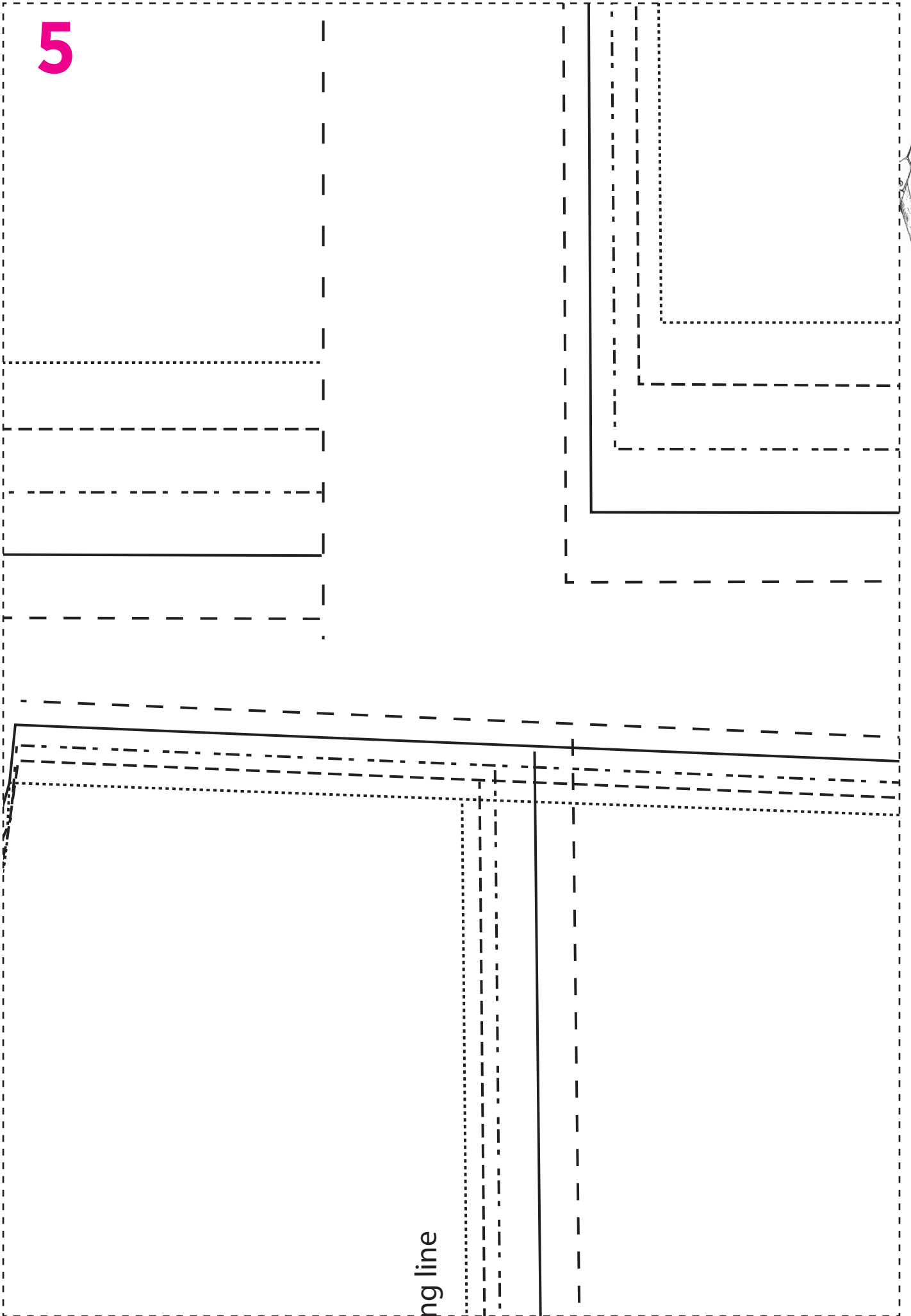
Size 4

Size 5

Size 6



5



ng line

6



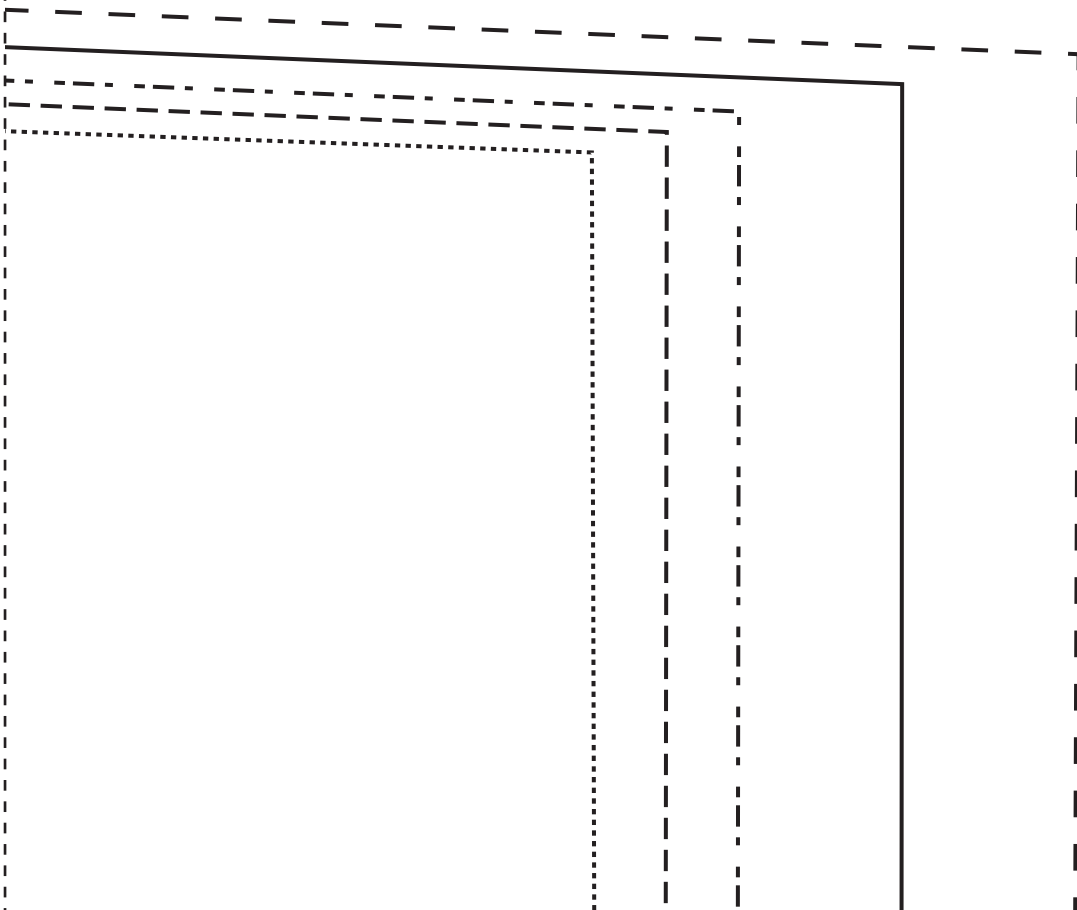
Size 2

Size 3

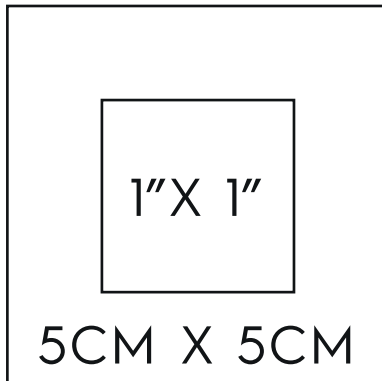
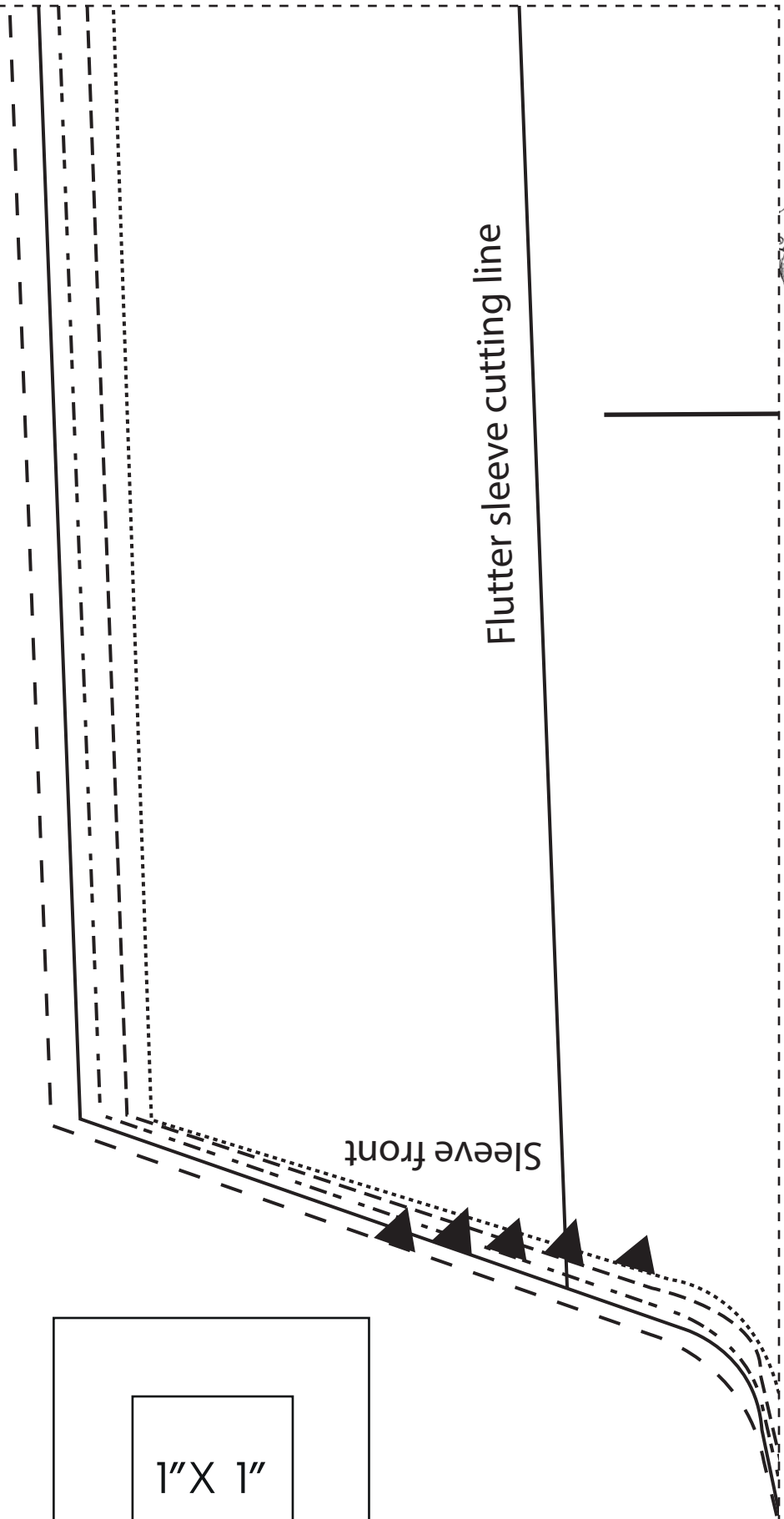
Size 4

Size 5

Size 6



7



8

Peasant Top/Dress Sleeve Cut 2.

Grainline

Short sleeve cutti



9

