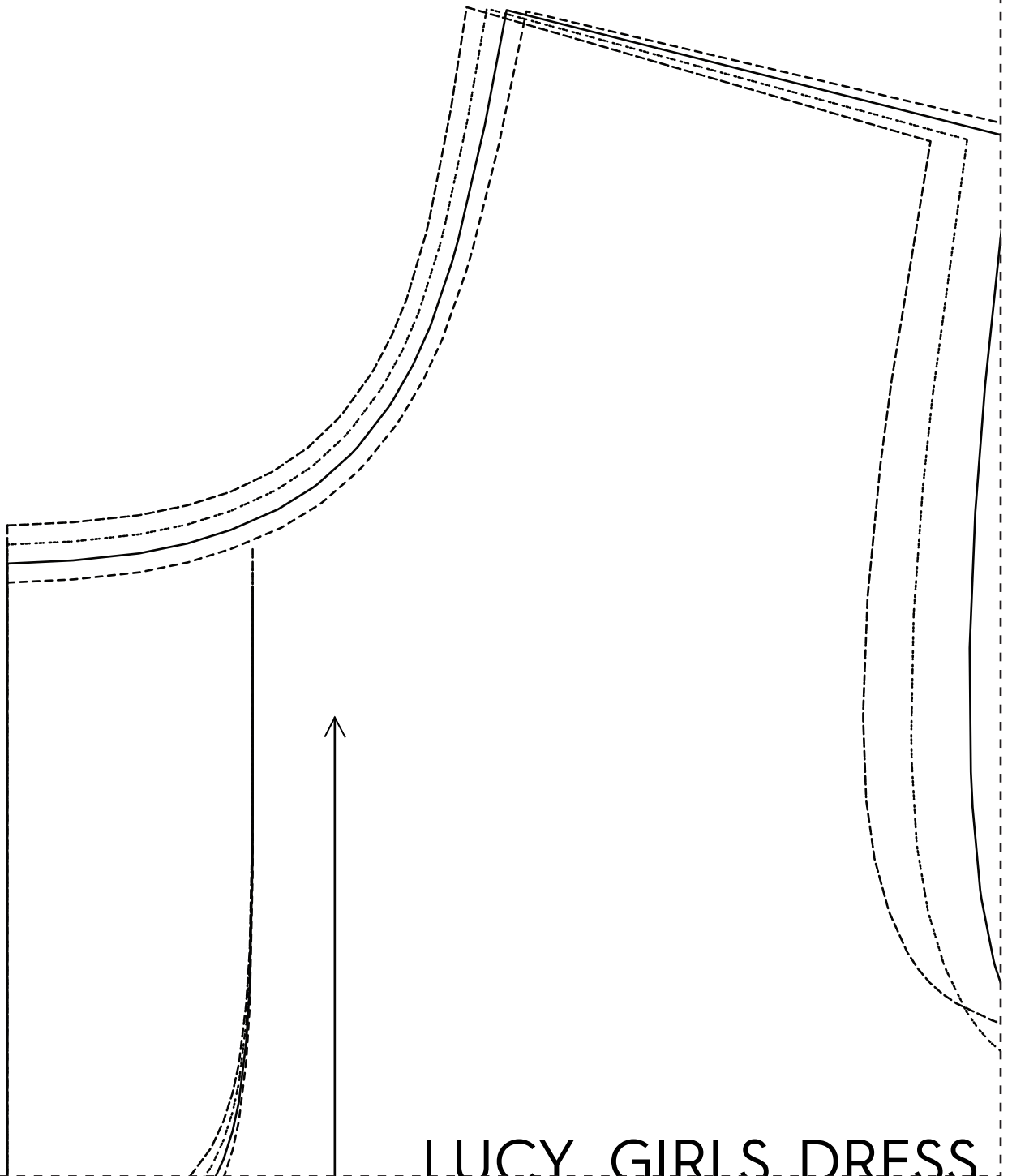
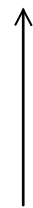
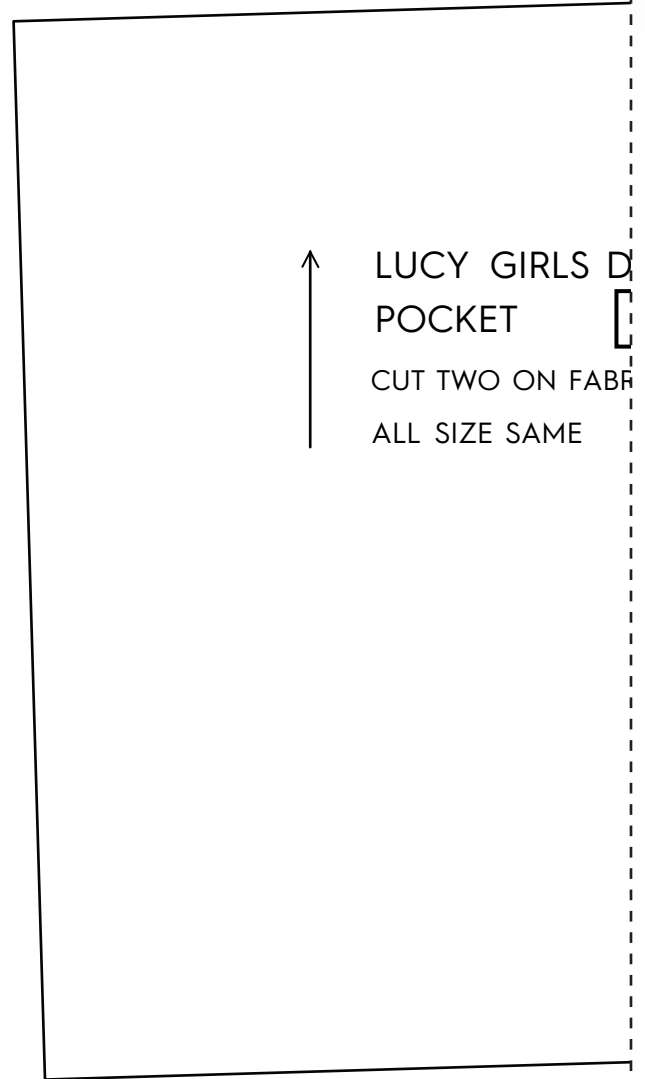
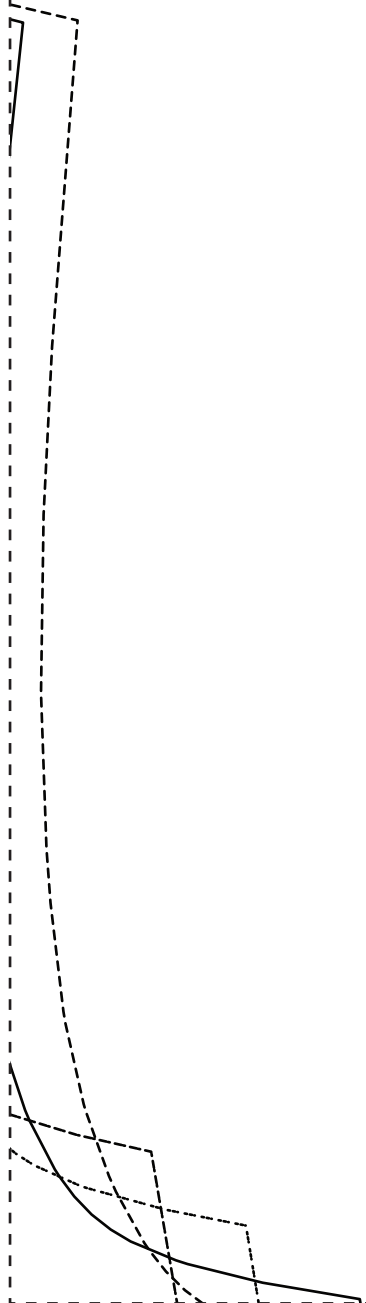


1



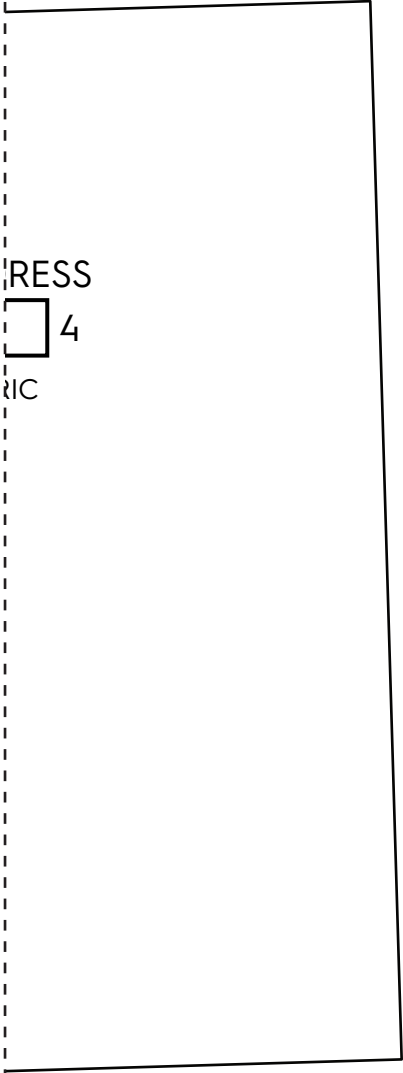
LUCY GIRLS DRESS

2

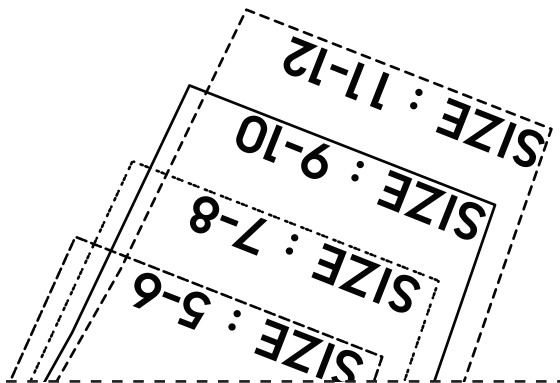


LUCY GIRLS D
POCKET []
CUT TWO ON FABR
ALL SIZE SAME

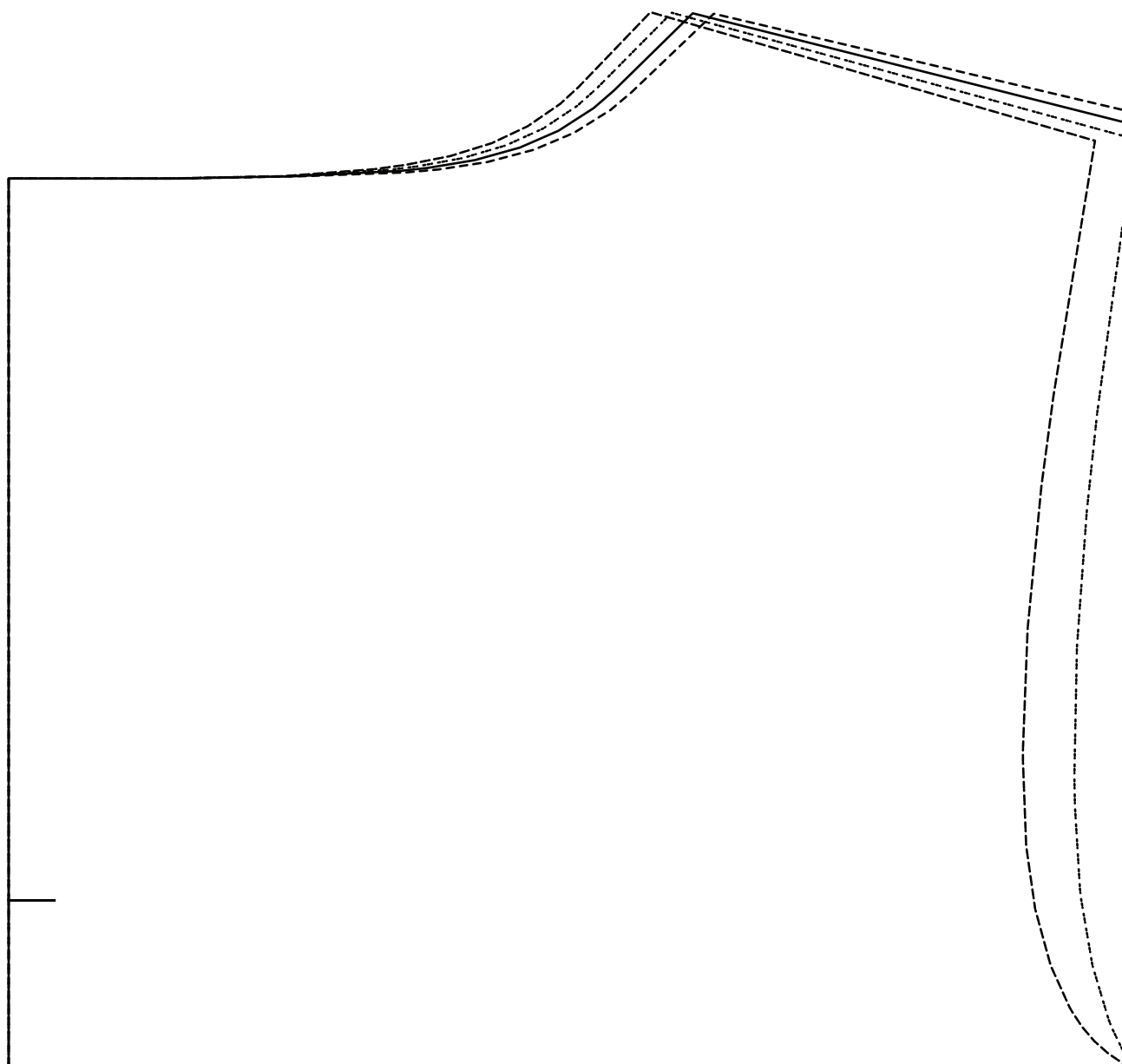
3



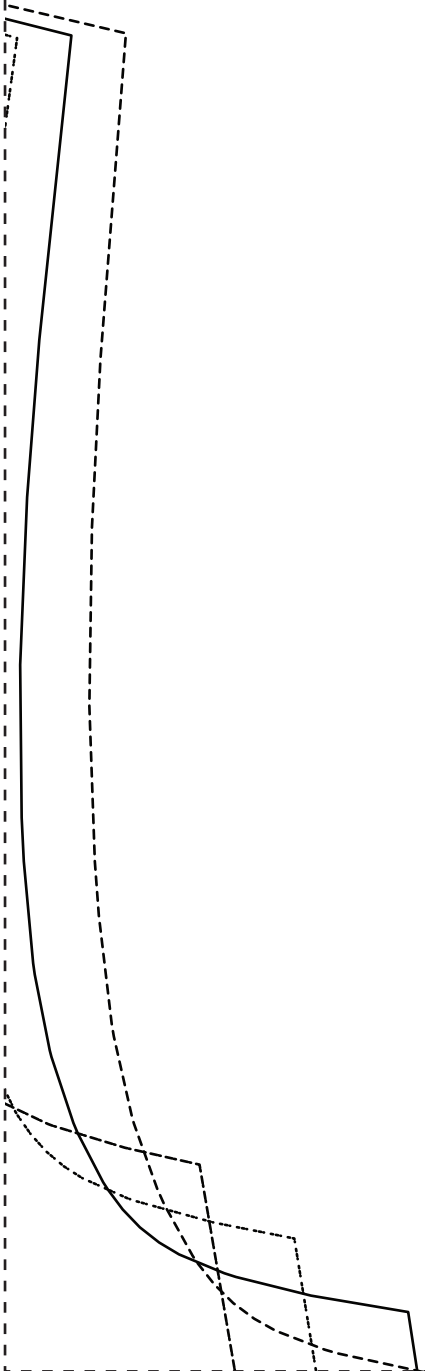
RESS
4
IC



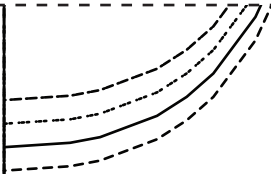
4



5



6



FRONT



1

CUT ONE ON FOLD OF FA



FOLDLINE

7

BRIC

SIZE : 5-6

SIZE : 7-8

SIZE : 9-10

SIZE : 11-12



GATHERS

LUCY GIRLS DRESS
SLEEVE 3
CUT TWO ON FABRIC



9



LUCY GIRLS DRESS

BACK  2

CUT TWO ON FABRIC

10

SIZE : 5-6

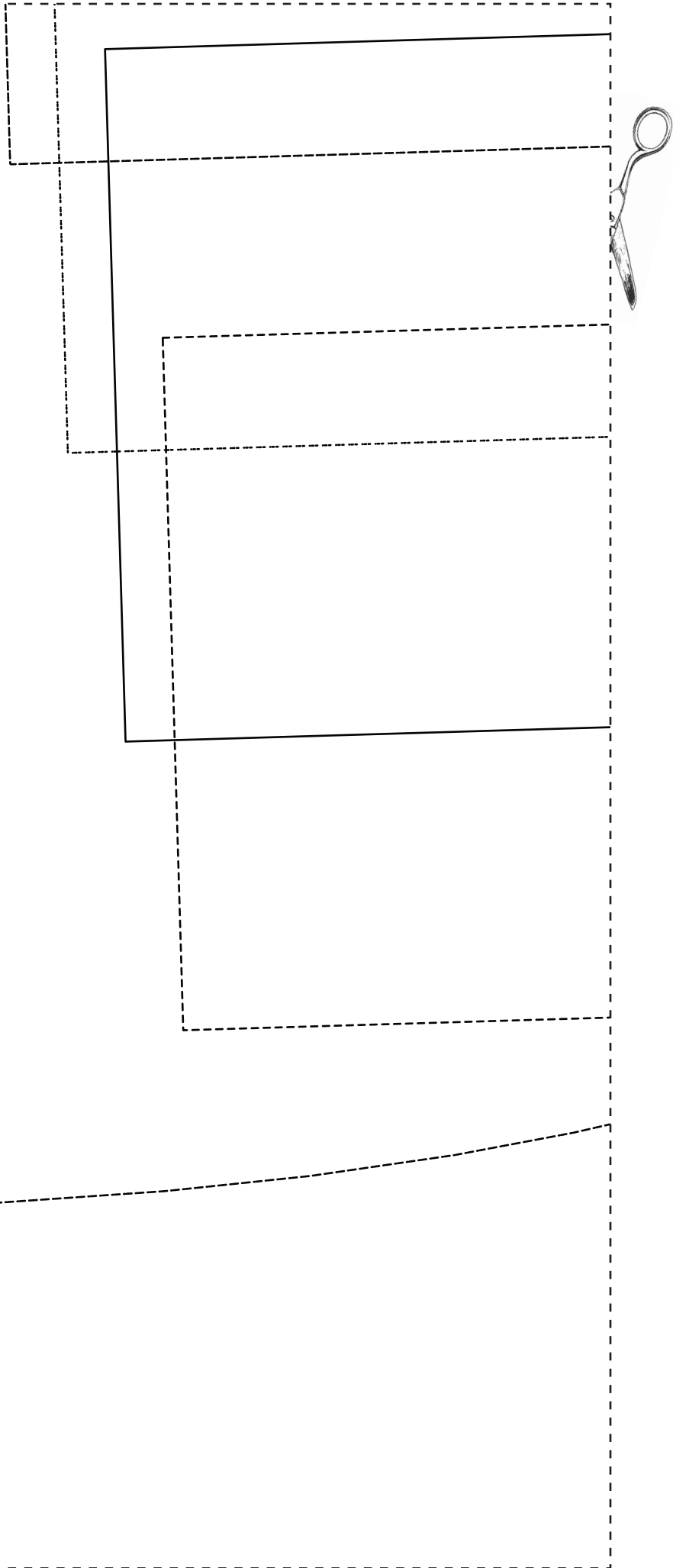
SIZE : 7-8

SIZE : 9-10

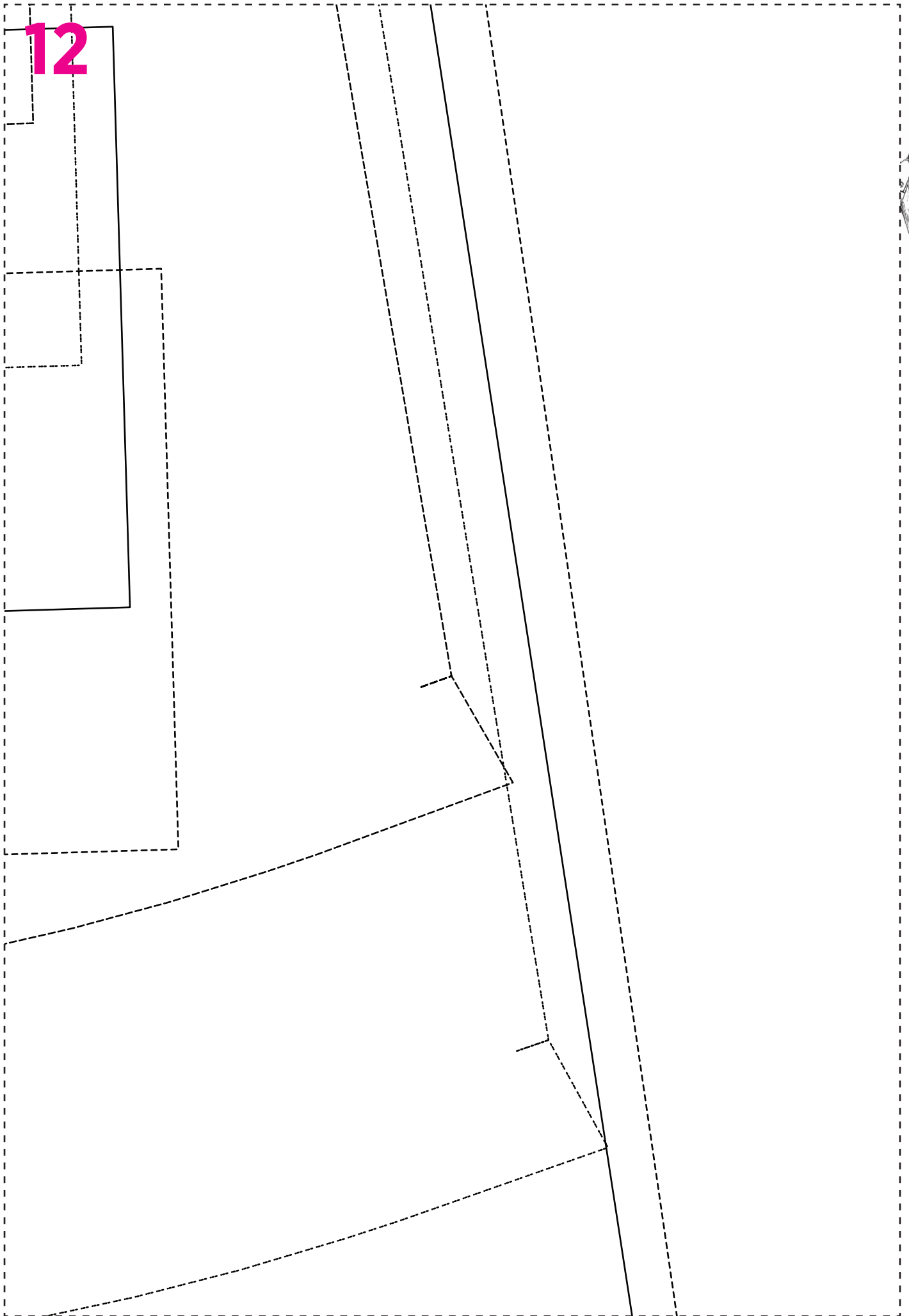
SIZE : 11-12



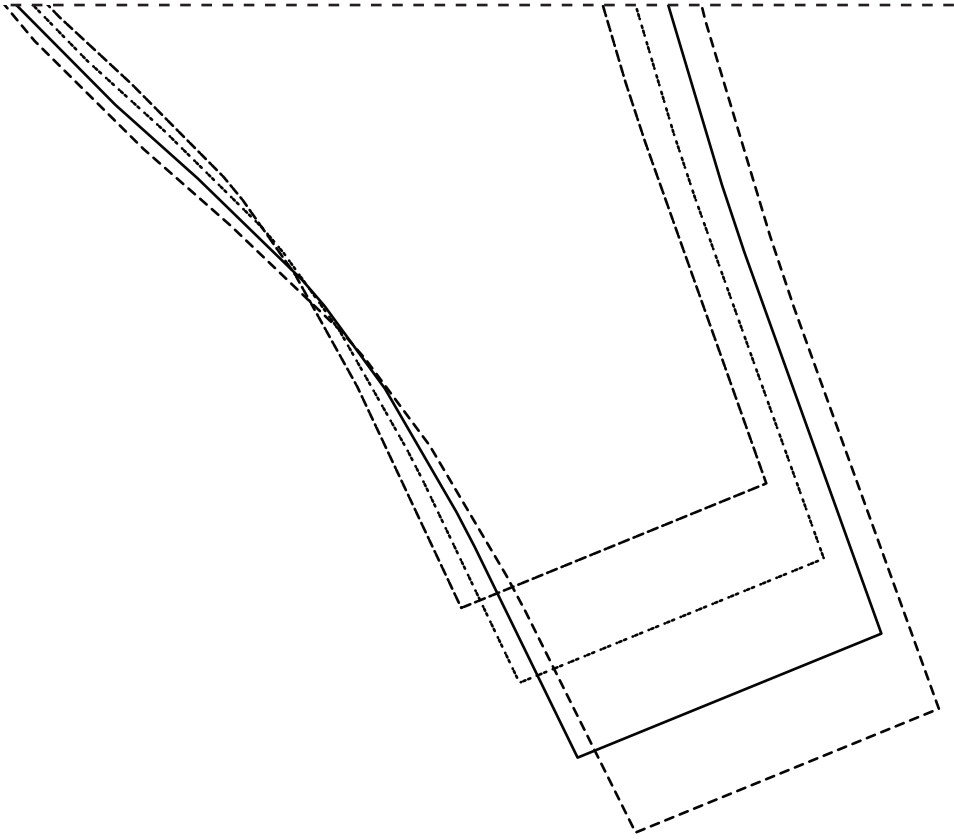
11



12



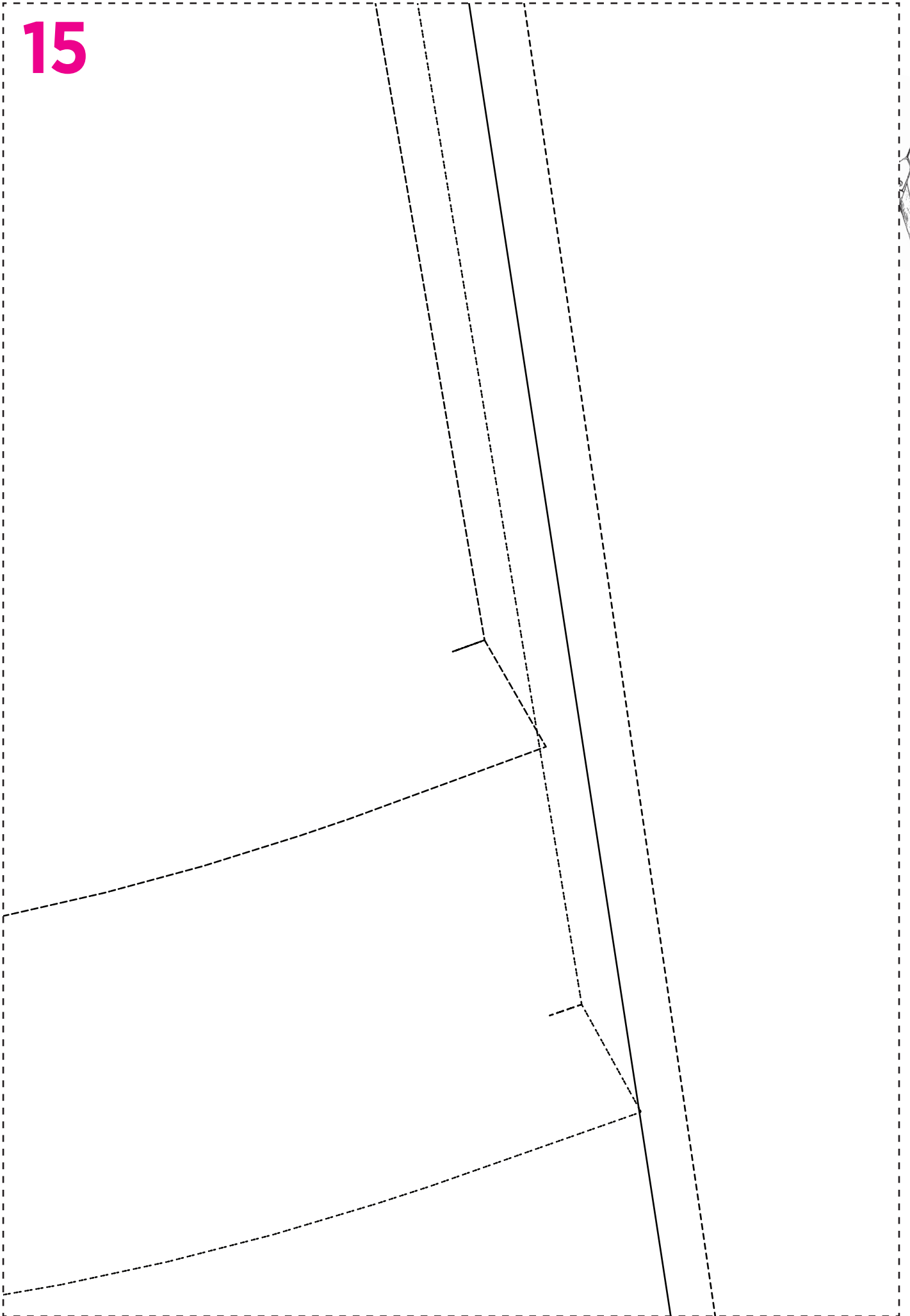
13



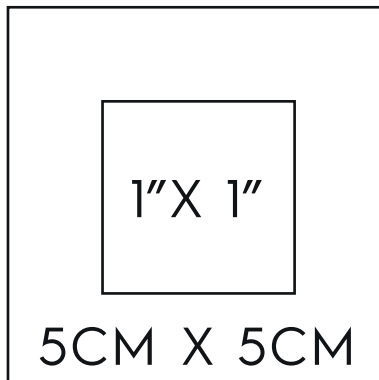
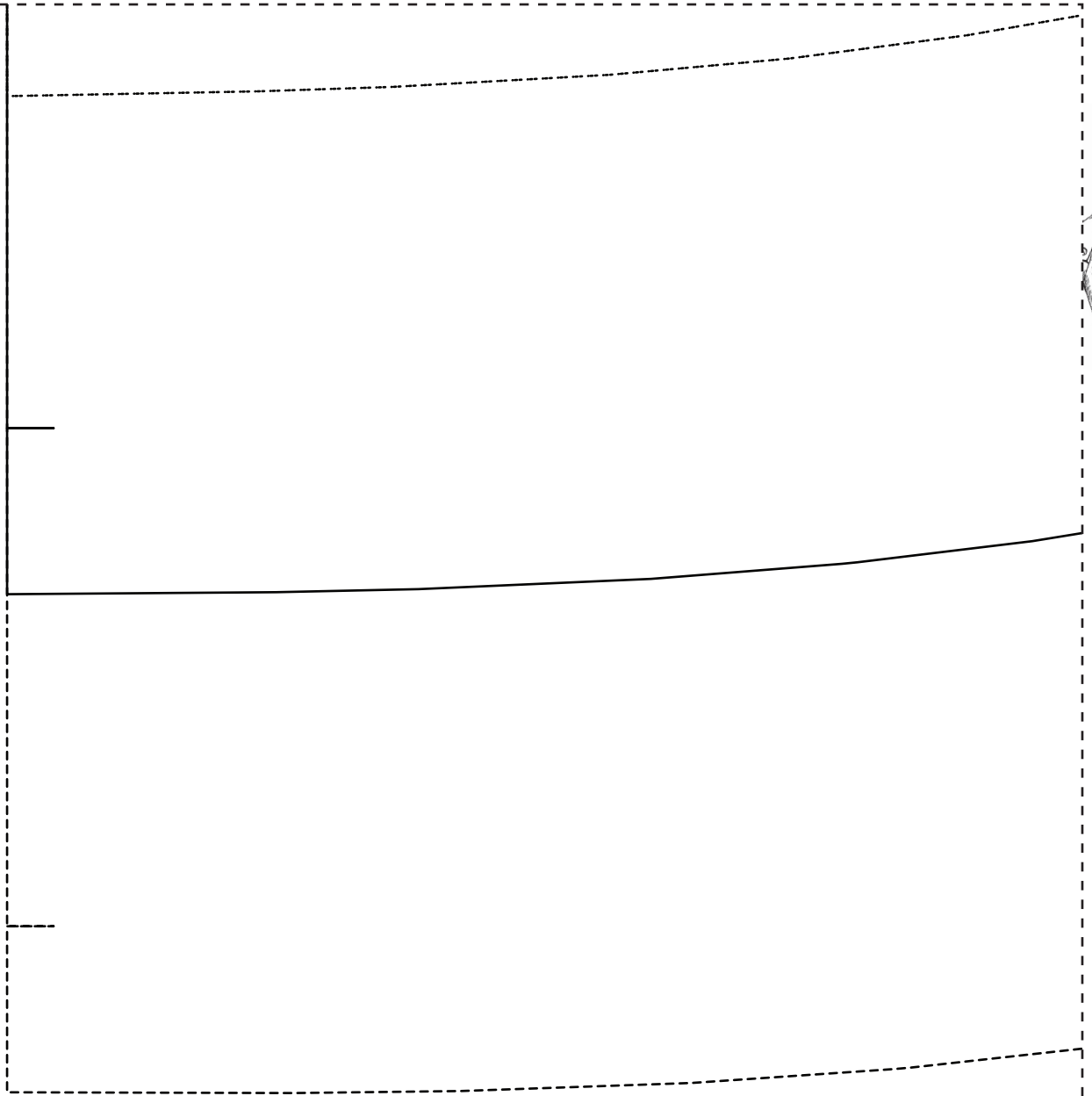
14



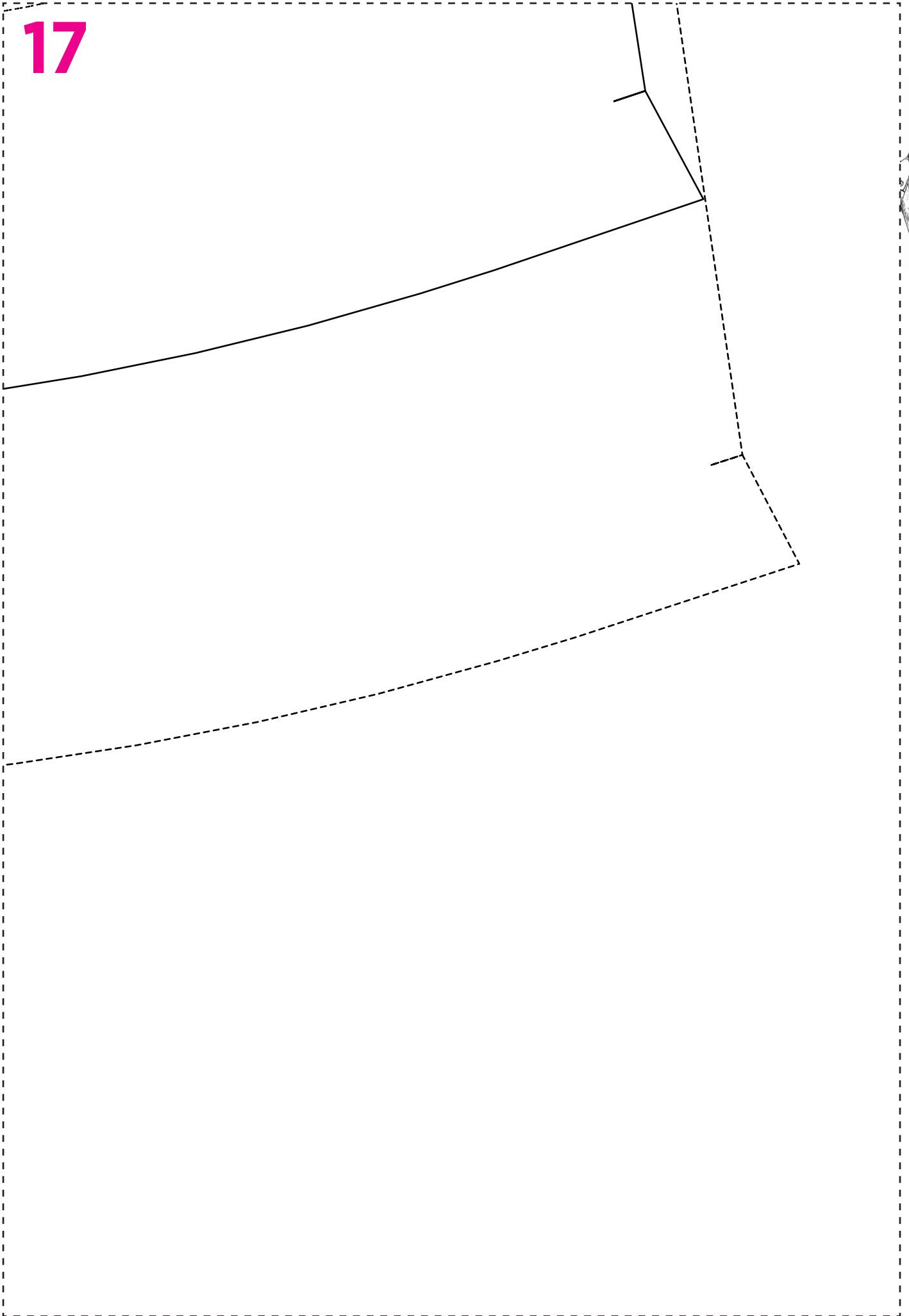
15

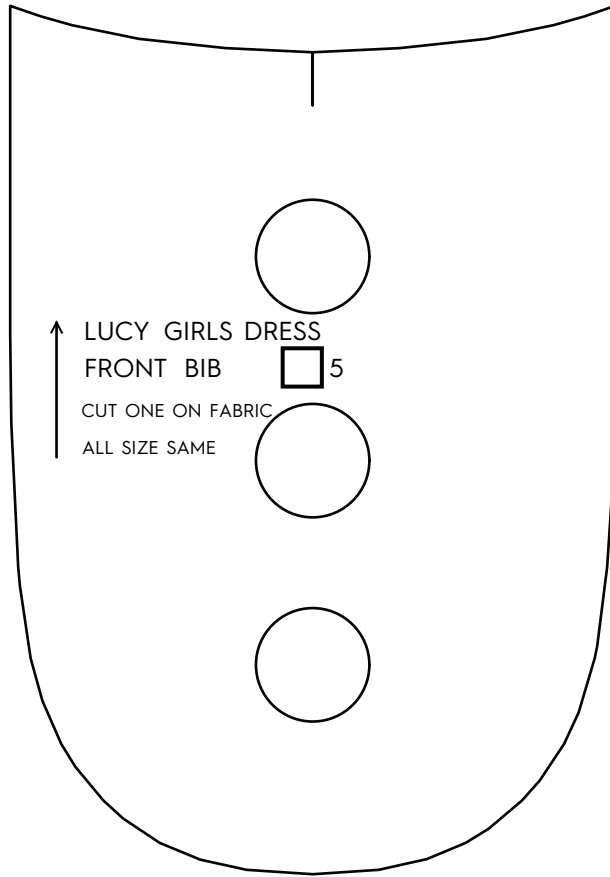


16



17





↑ LUCY GIRLS DRESS
FRONT BIB 5
CUT ONE ON FABRIC
ALL SIZE SAME

19



20

