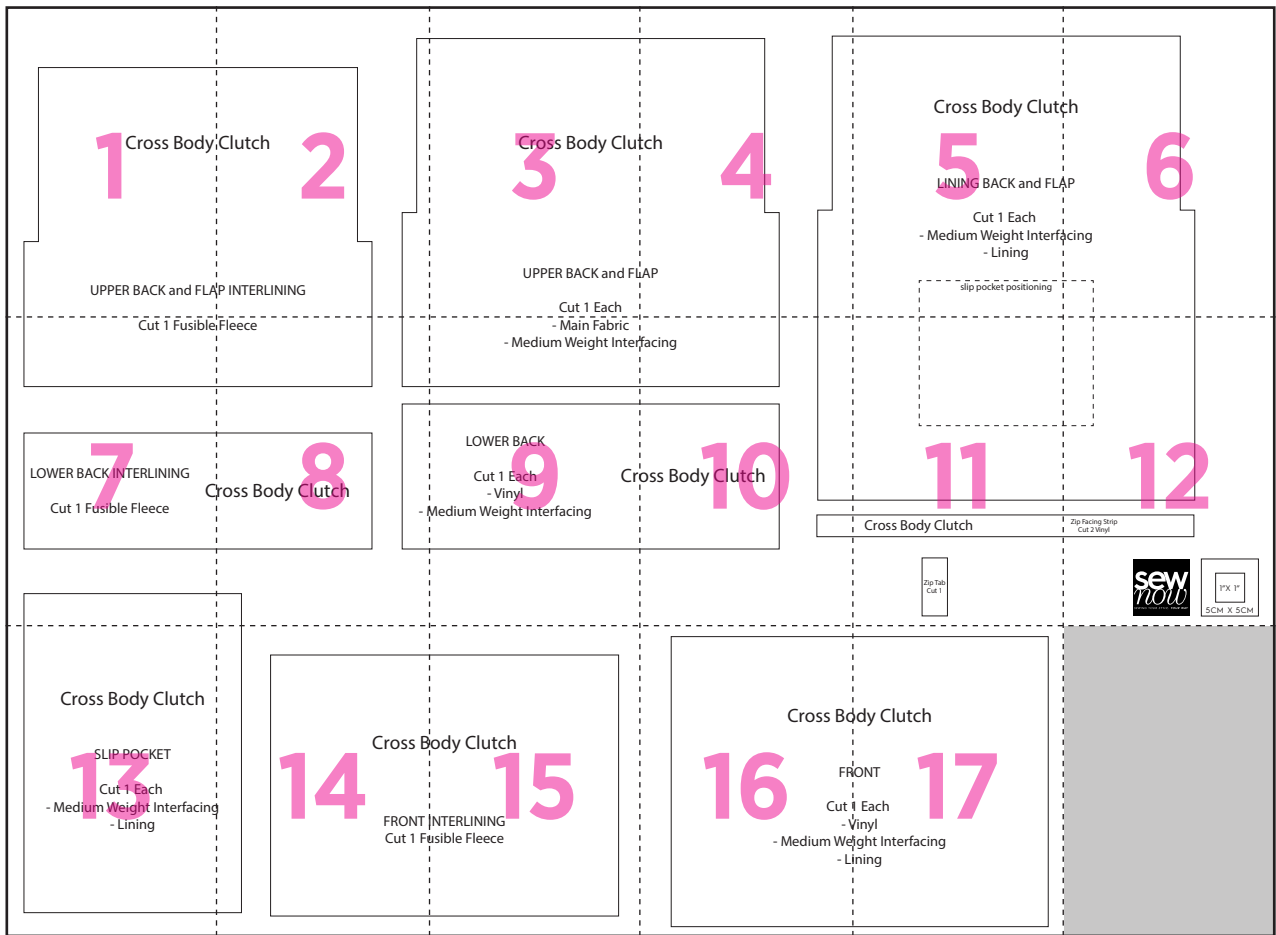


# FLY AWAY CLUTCH



1



# Cross Body

UPPER BACK and FLA

2



# Clutch

INTERLINING

3



# Cross Body Clut

UPPER BACK and FL

Cut 1 Each

4

tch

AP



5



# Cross Body Clutch

LINING BACK and FLAP

- Cut 1 Each
- Medium Weight Interfacing
- Lining

slip pocket positioning

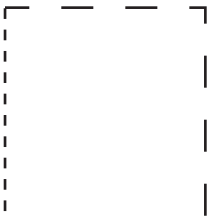
6



ch

AP

acing



**7**

**Cut 1 Fusible**



**LOWER BACK INTERLINING**

**C**

**Cut 1 Fusible Fleece**



8 Fleece



Cross Body Clutch

- 1

9

- Main Fabric  
- Medium Weight Inter



LOWER BACK

Cut 1 Each  
- Vinyl

Cre

Medium Weight Interfacing

**10**  
facing

# Cross Body Clutch



11



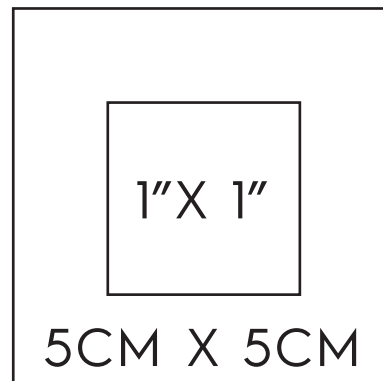
# Cross Body Clutch

Zip Tab  
Cut 1

12



Zip Facing Strip  
Cut 2 Vinyl





# Cross Body Clutch

## SLIP POCKET

Cut 1 Each

- Medium Weight Interfacing
- Lining

14



Cross B

FRONT  
Cut 1 Fu

15



# Body Clutch

**INTERLINING**  
Visible Fleece





# Cross Bo

FR

Cut

- V

- Medium We

- L



# Body Clutch

FRONT

1 Each

Vinyl

Light Interfacing

Lining