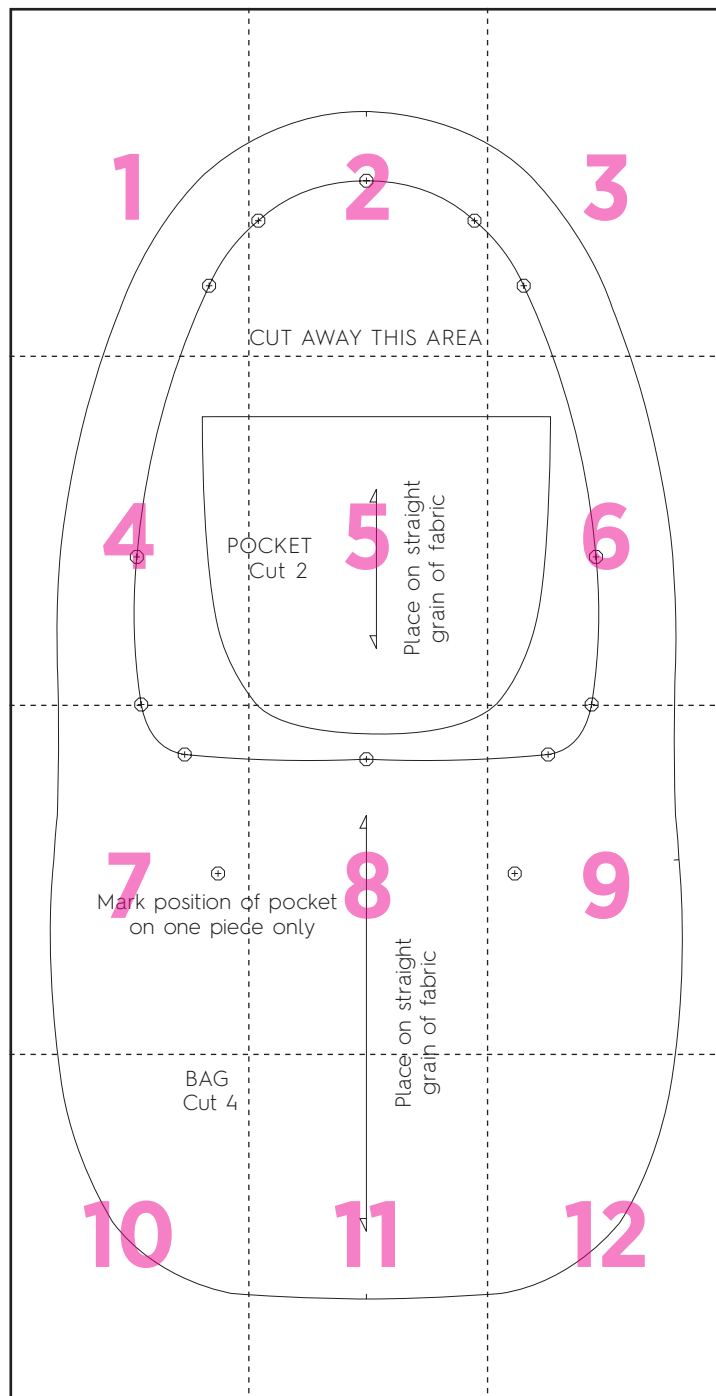
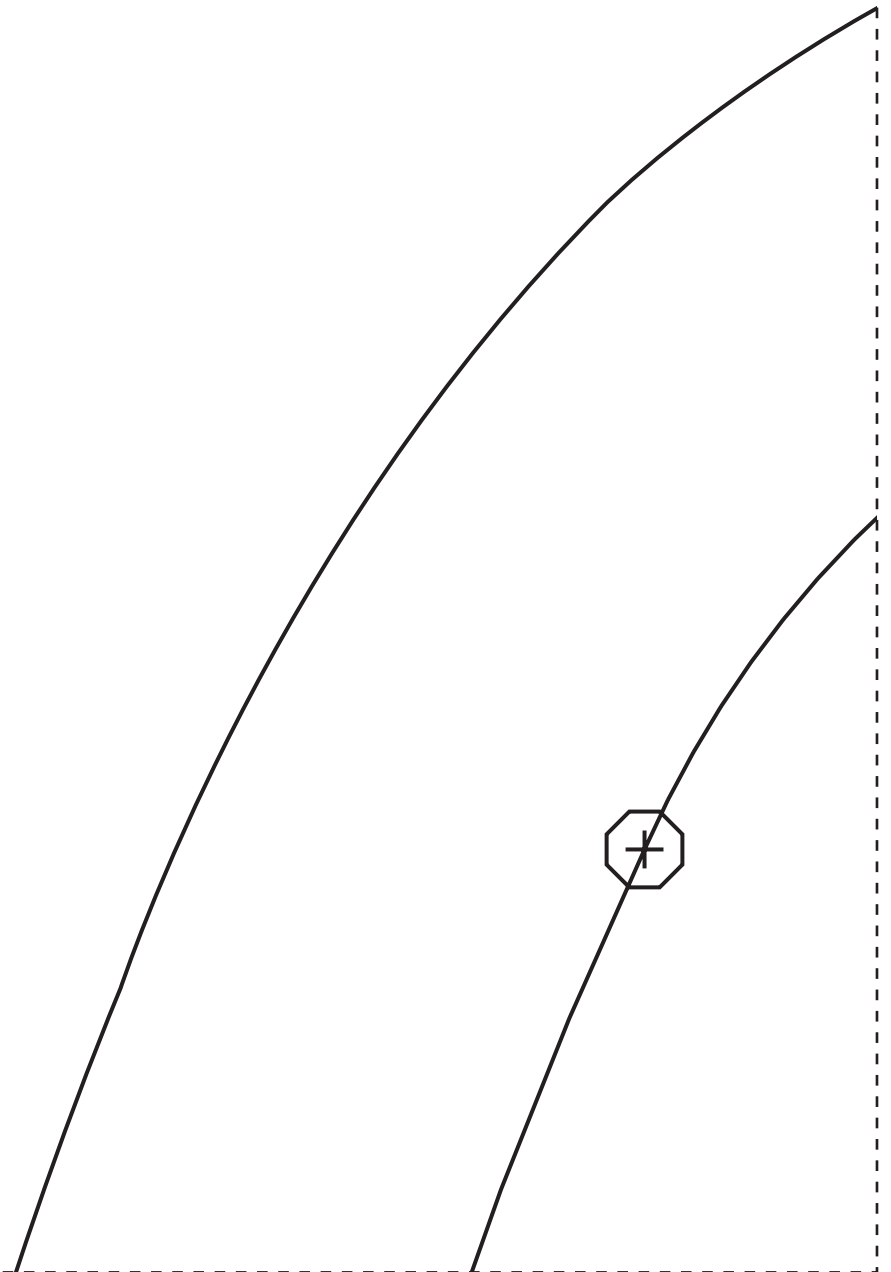


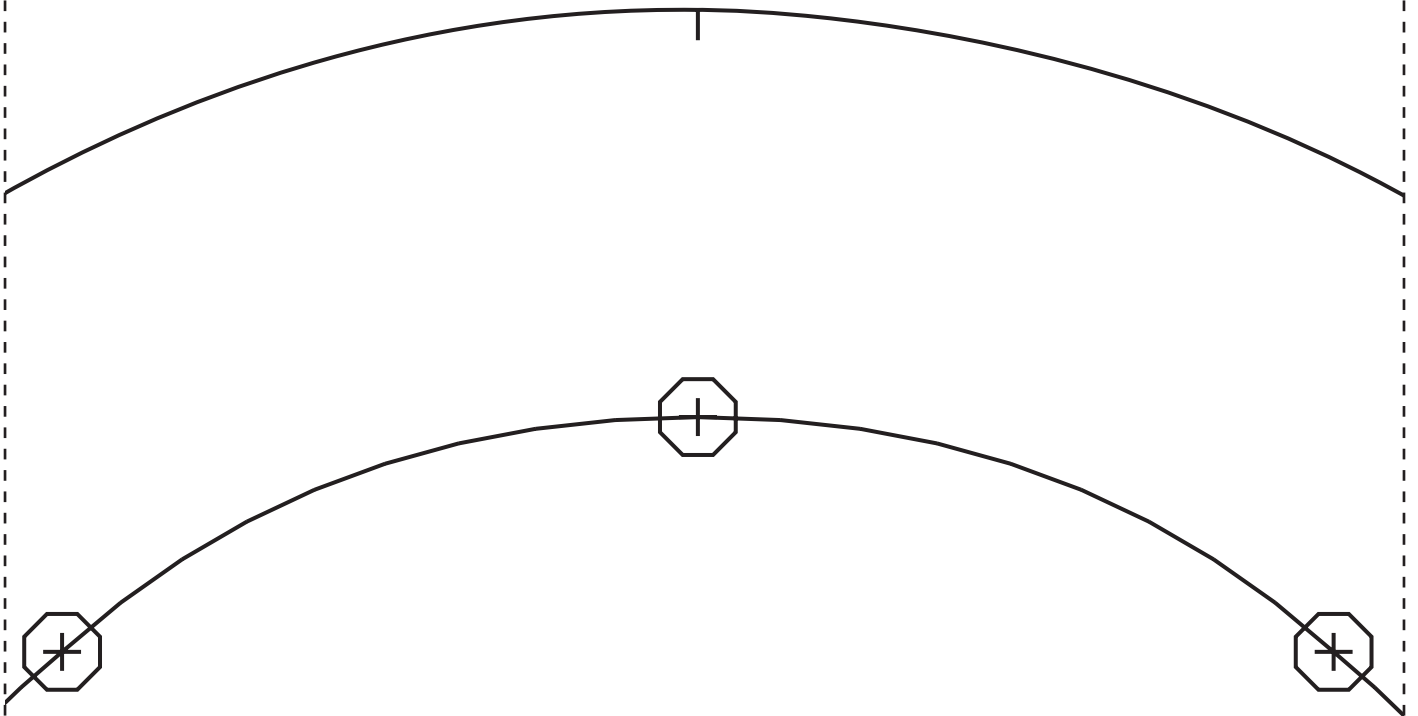
# CHRISTMAS FLORAL BAG



1

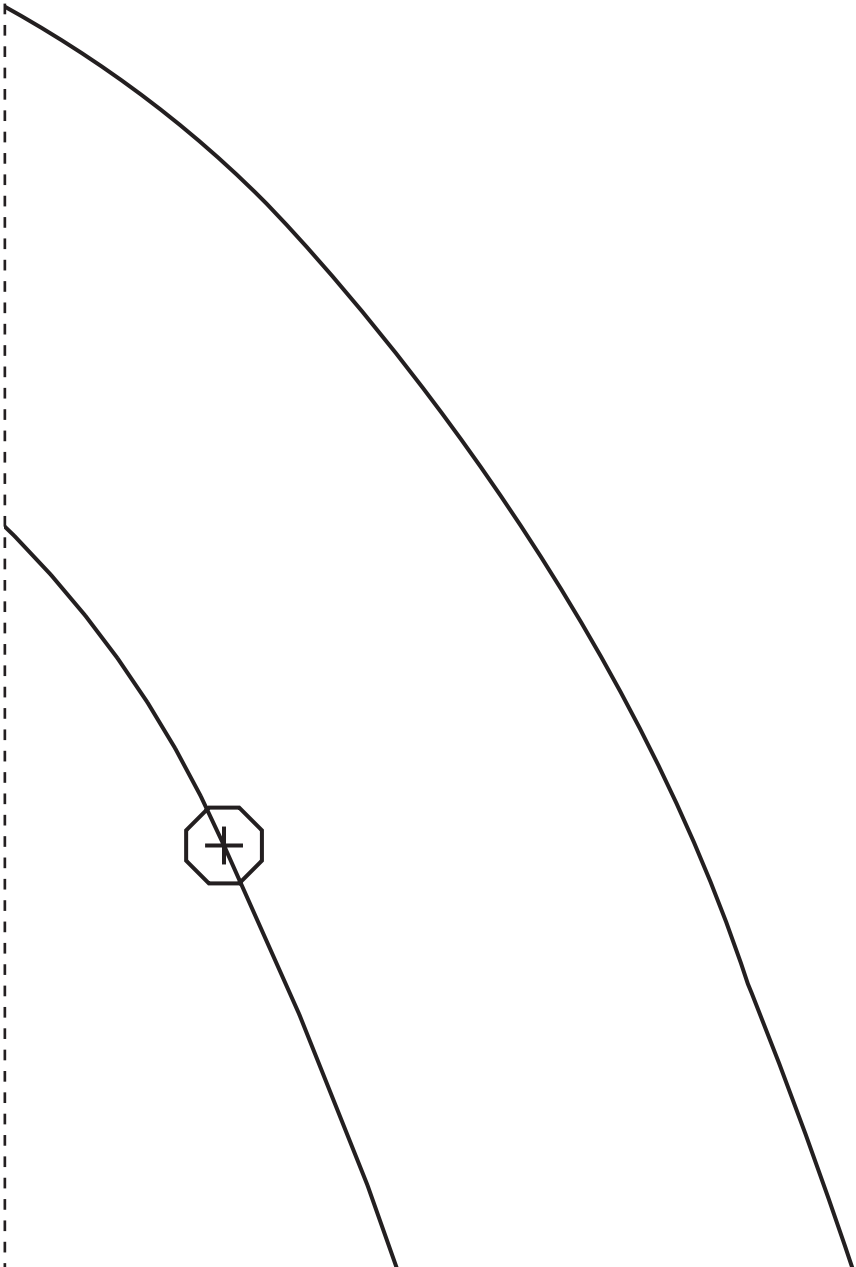


2



CUT AWAY THIS AREA

3



4



PC



5

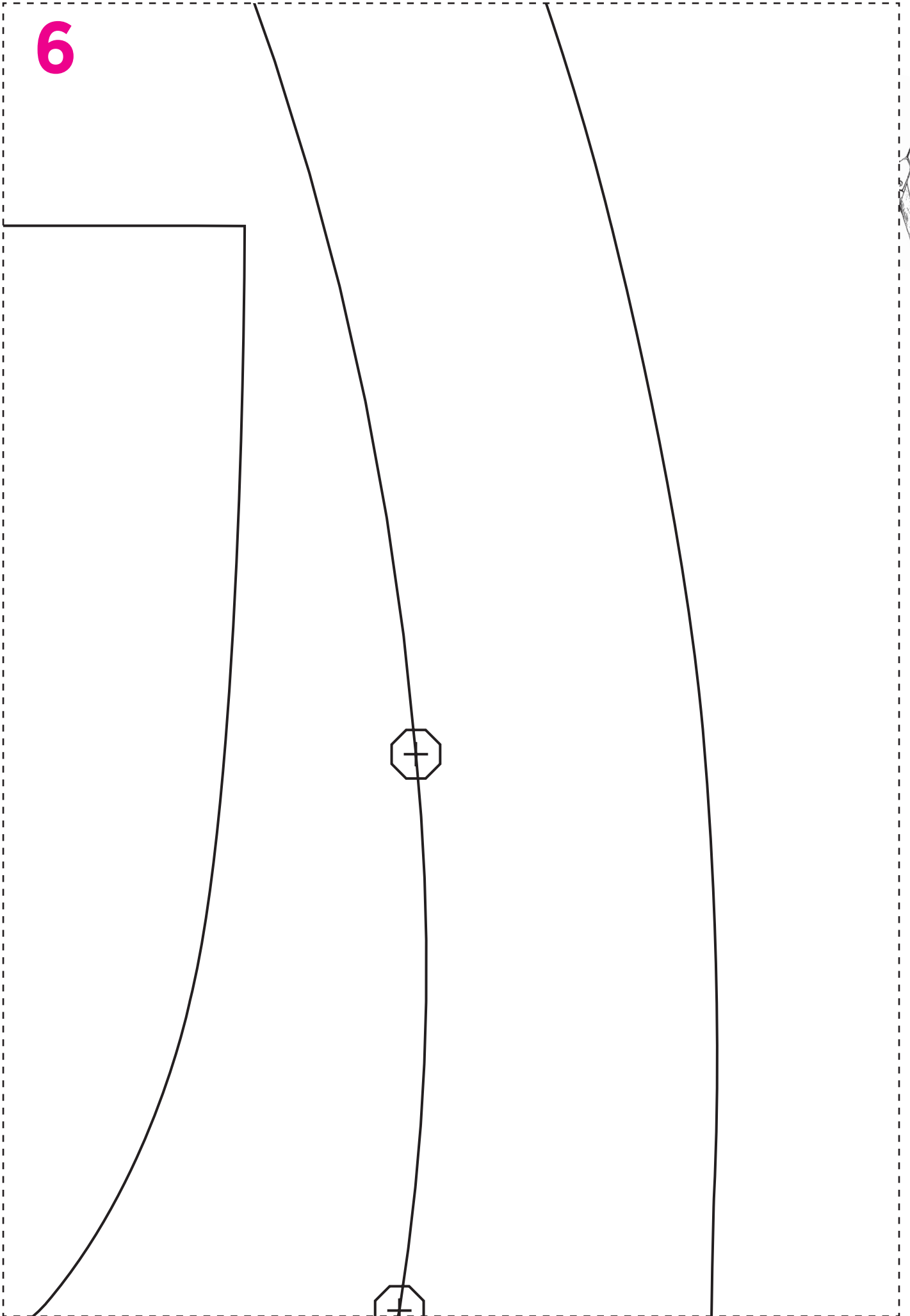


POCKET  
Cut 2

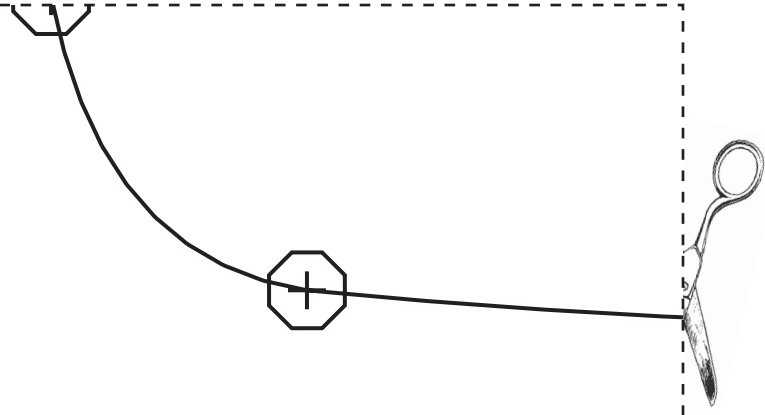


Place on straight  
grain of fabric

6



7



Mark position c  
on one piece



8

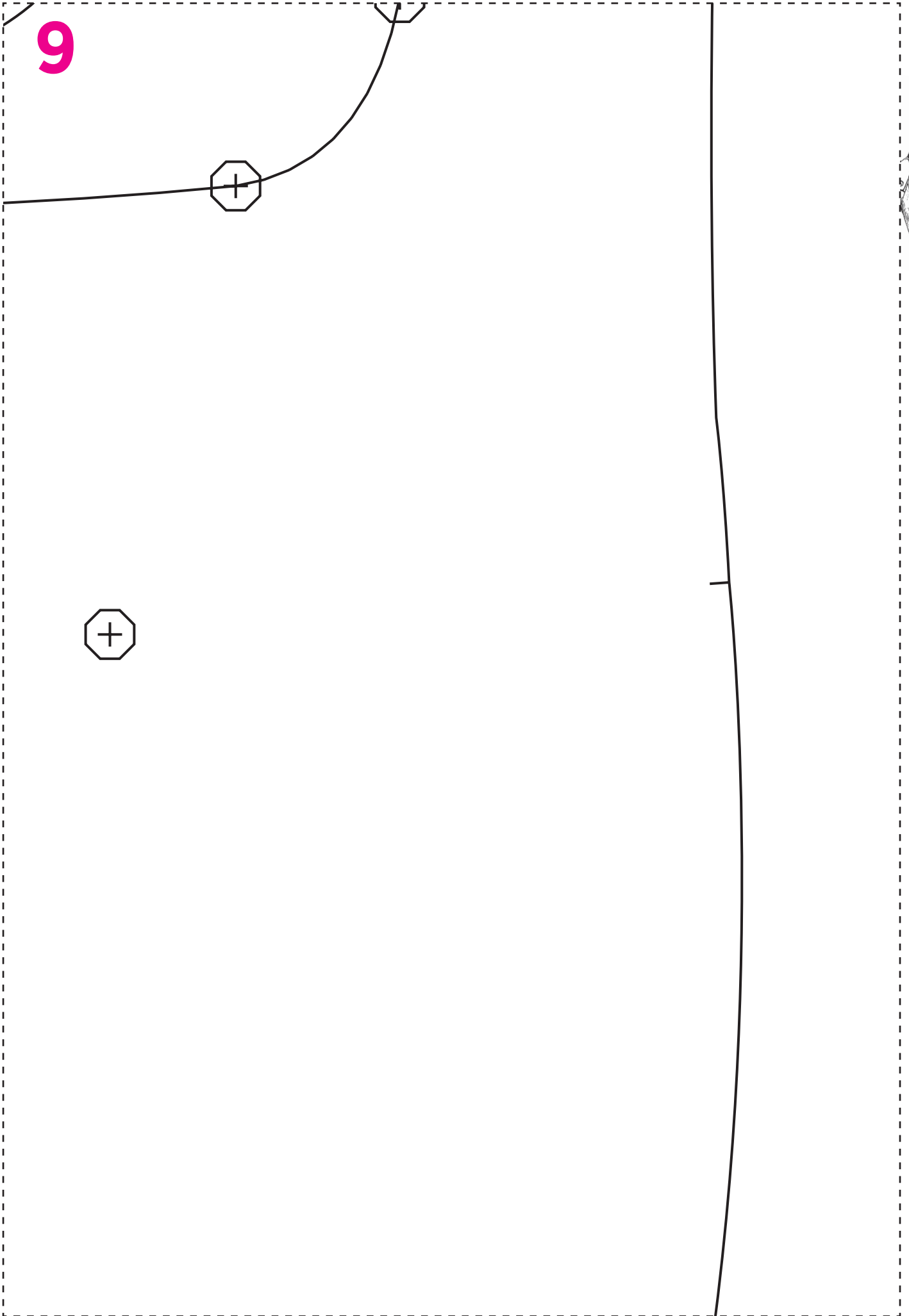


of pocket  
e only



on straight  
n of fabric

9



10

BAG  
Cut 4



11

Place  
grain



12

