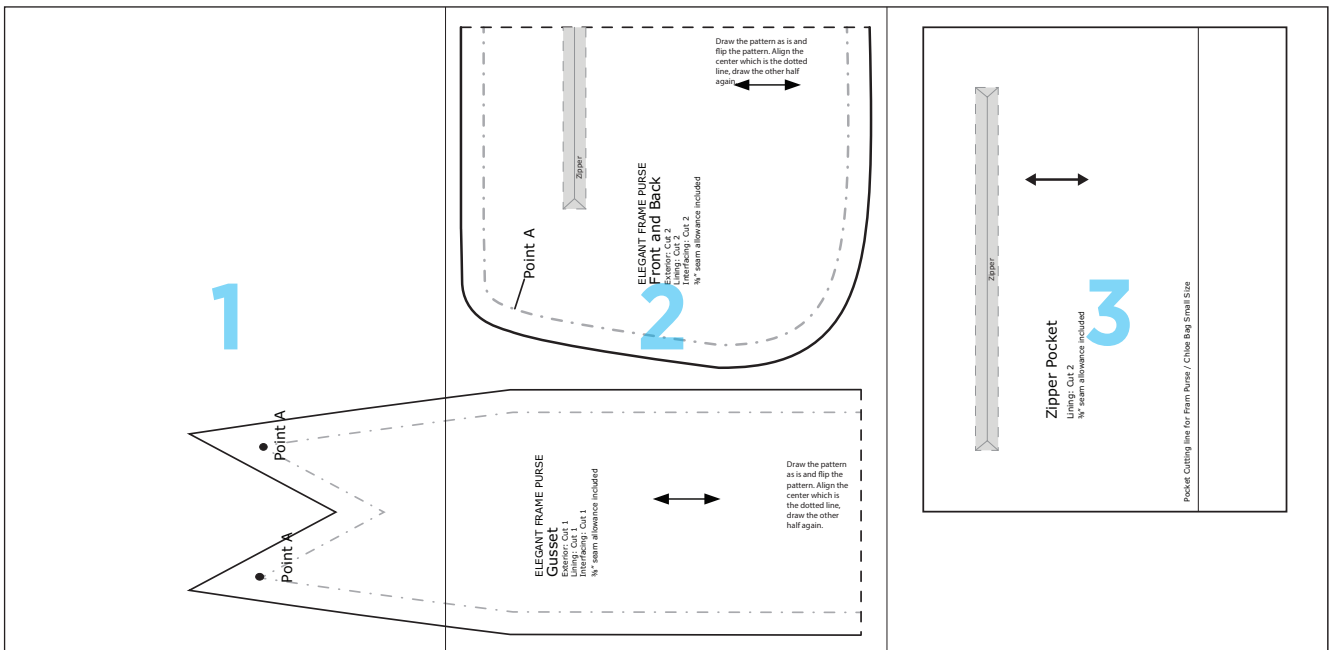
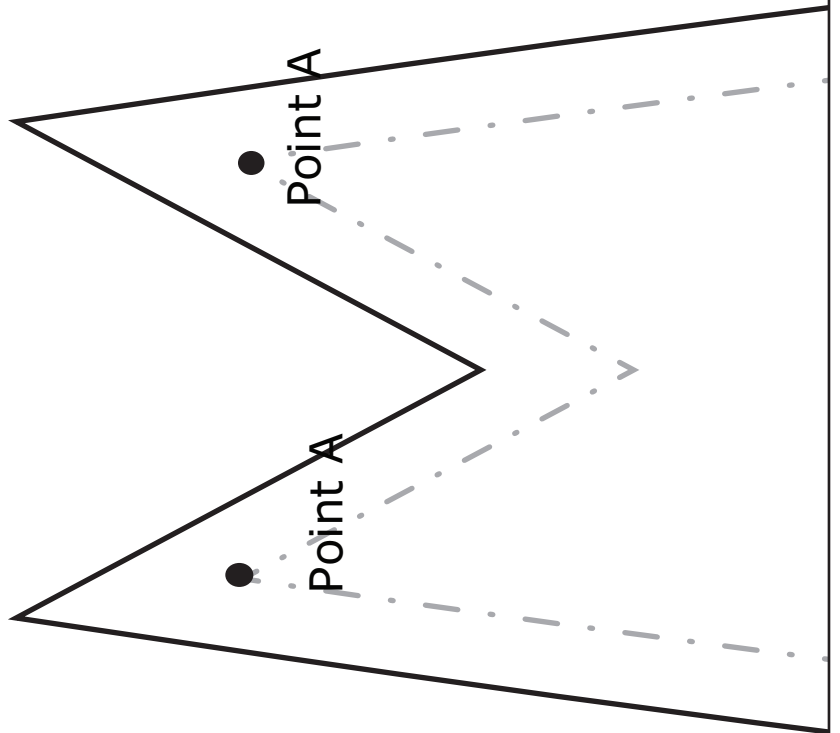


Elegant Frame Clutch





2

Point A



Zipper

ELEGANT FRAME PURSE Front and Back

Exterior: Cut 2
Lining: Cut 2
Interfacing: Cut 2
3/8" seam allowance included

Draw the pattern as is and flip the pattern. Align the center which is the dotted line, draw the other half again.



ELEGANT FRAME PURSE Gusset

Exterior: Cut 1
Lining: Cut 1
Interfacing: Cut 1
3/8" seam allowance included



Draw the pattern as is and flip the pattern. Align the center which is the dotted line, draw the other half again.



3



Zipper Pocket

Lining: Cut 2
 $\frac{3}{8}$ " seam allowance included

Pocket Cutting line for Fram Purse / Chloe Bag Small Size

