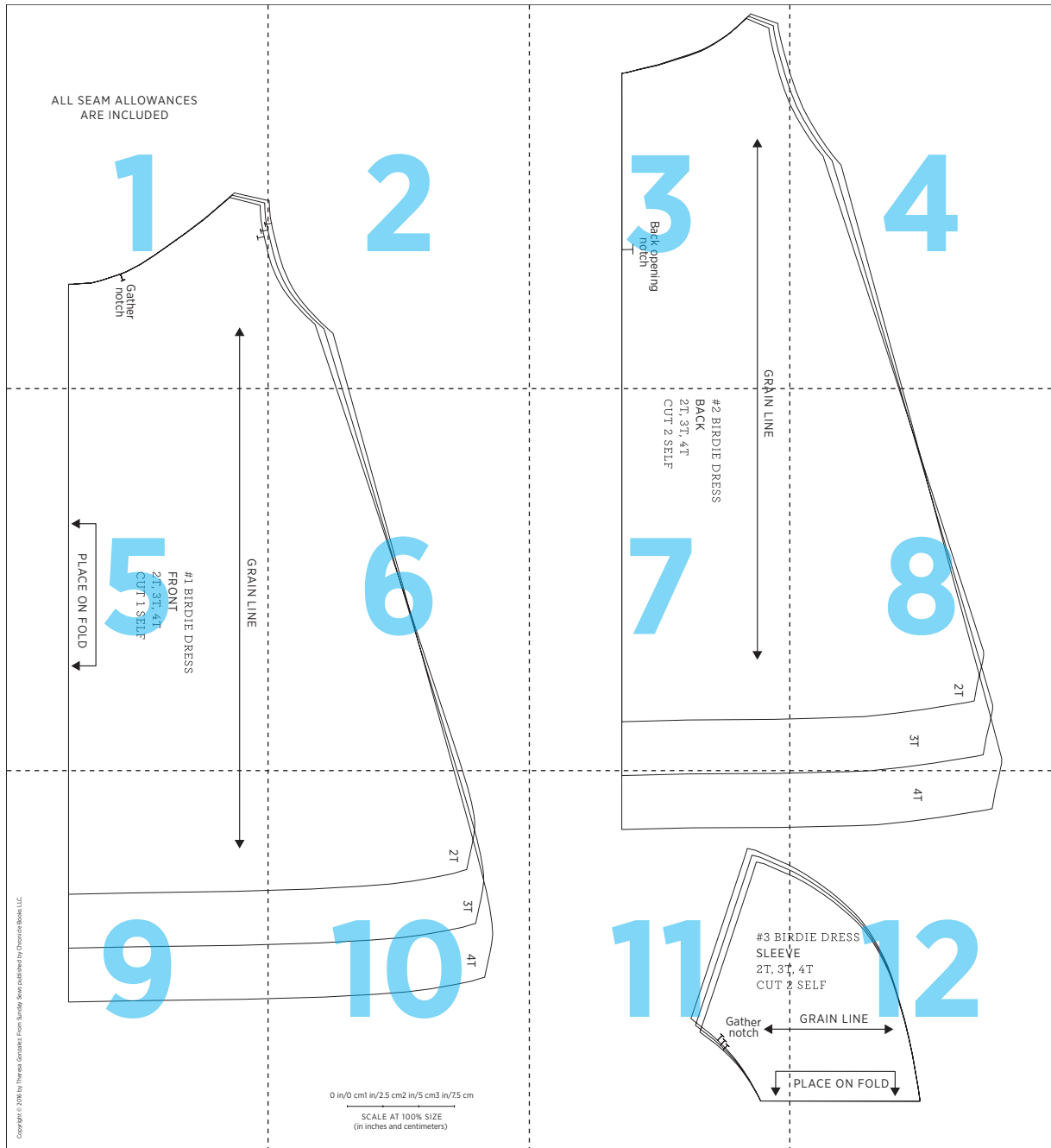


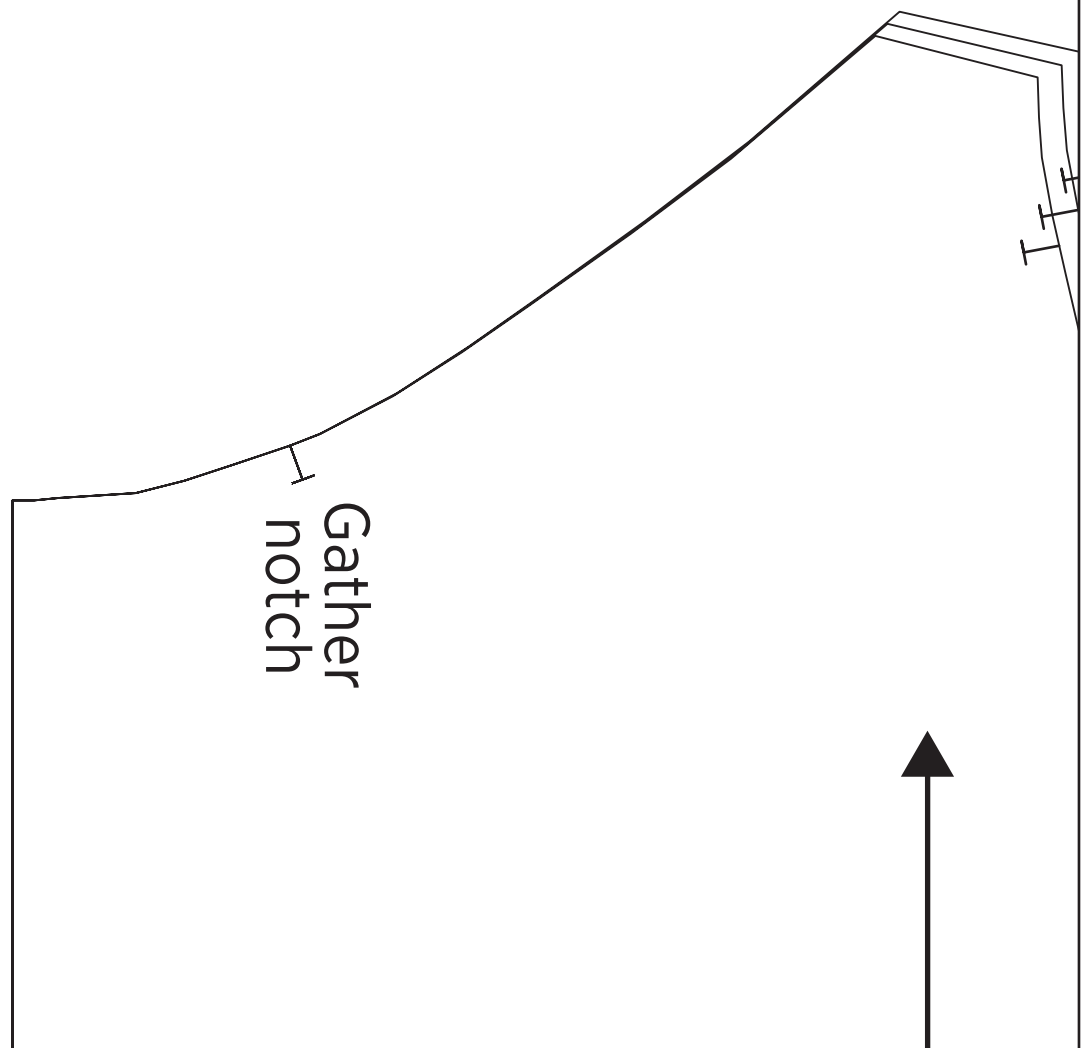
Birdie dress



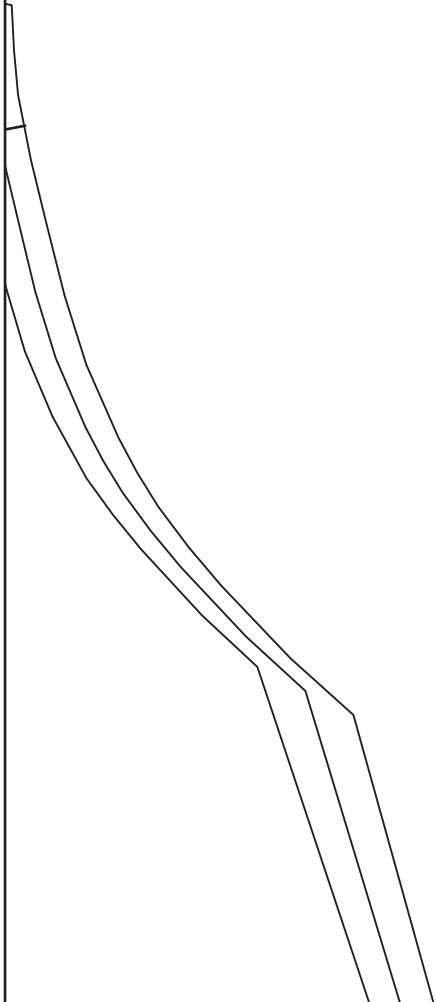
1



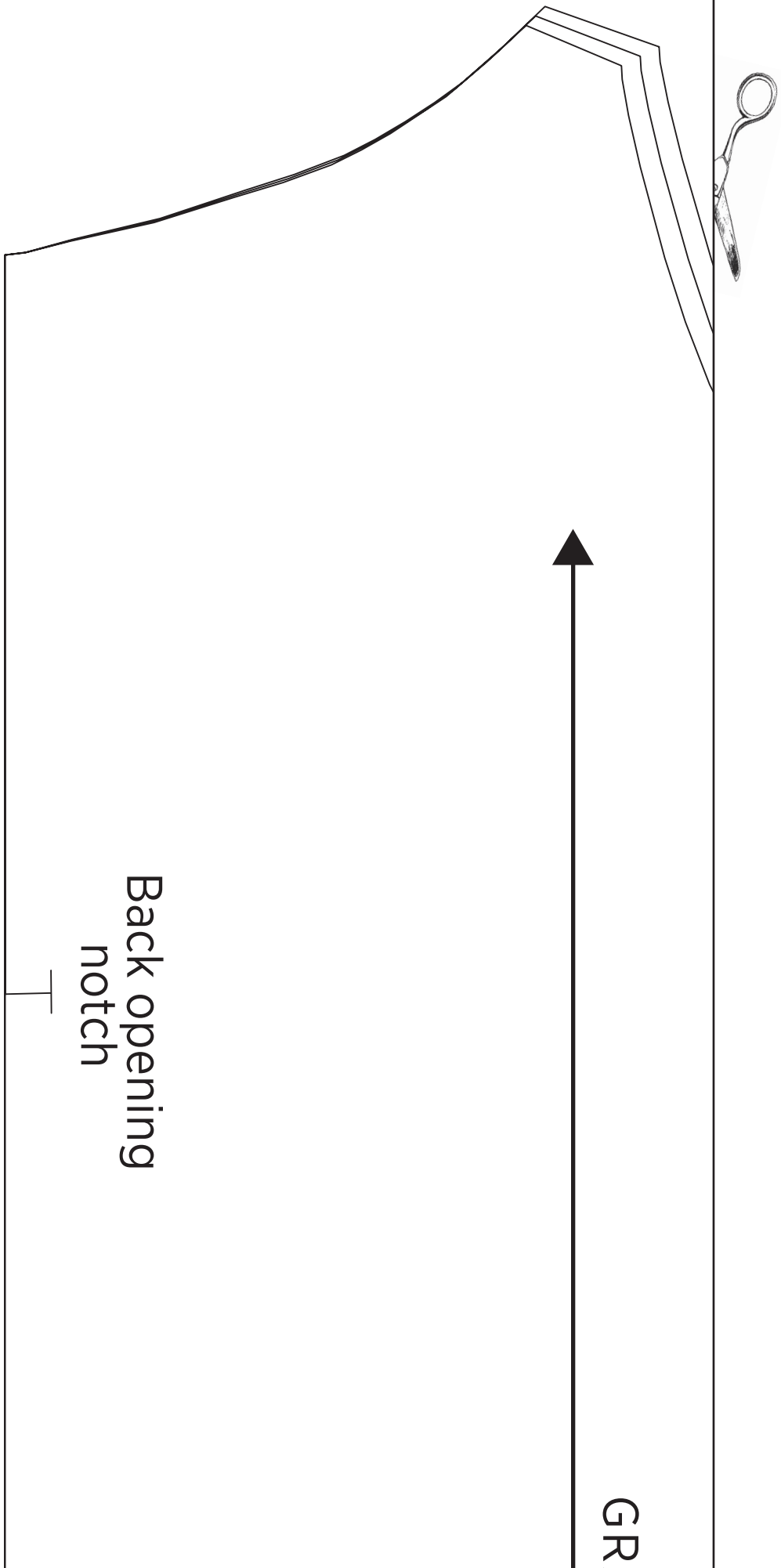
ALL SEAM ALLOWANCES
ARE INCLUDED



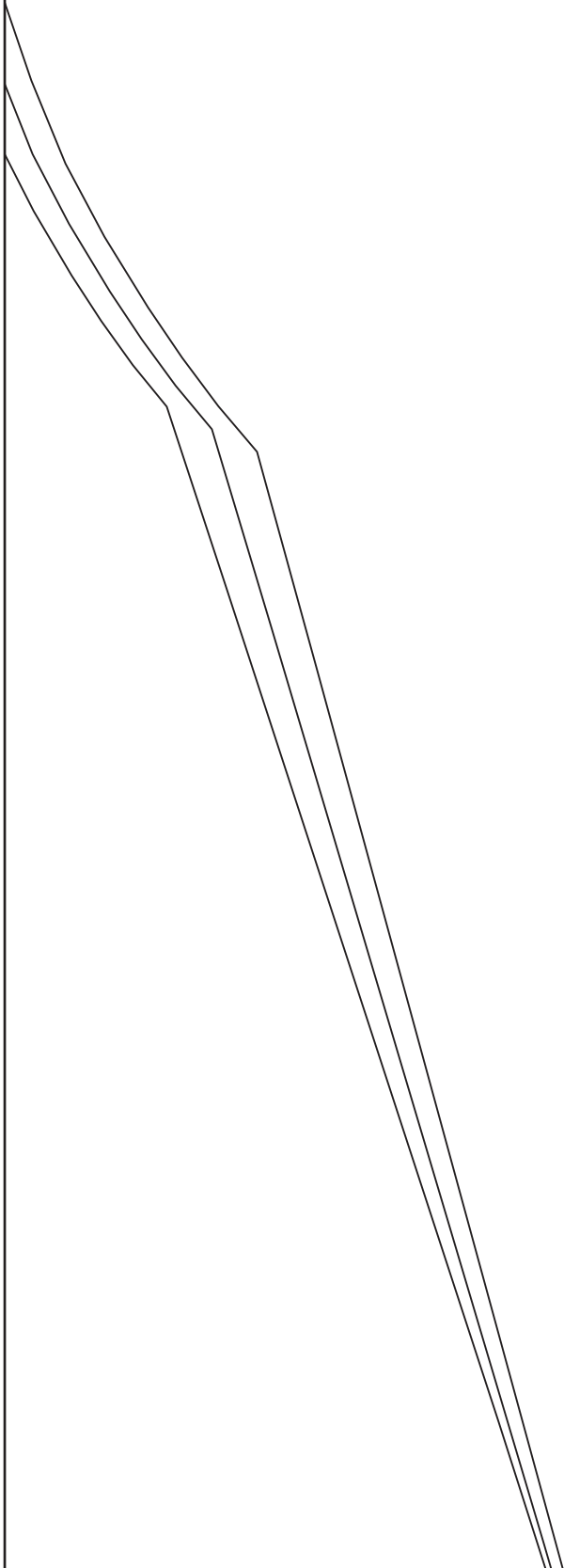
2



3



4





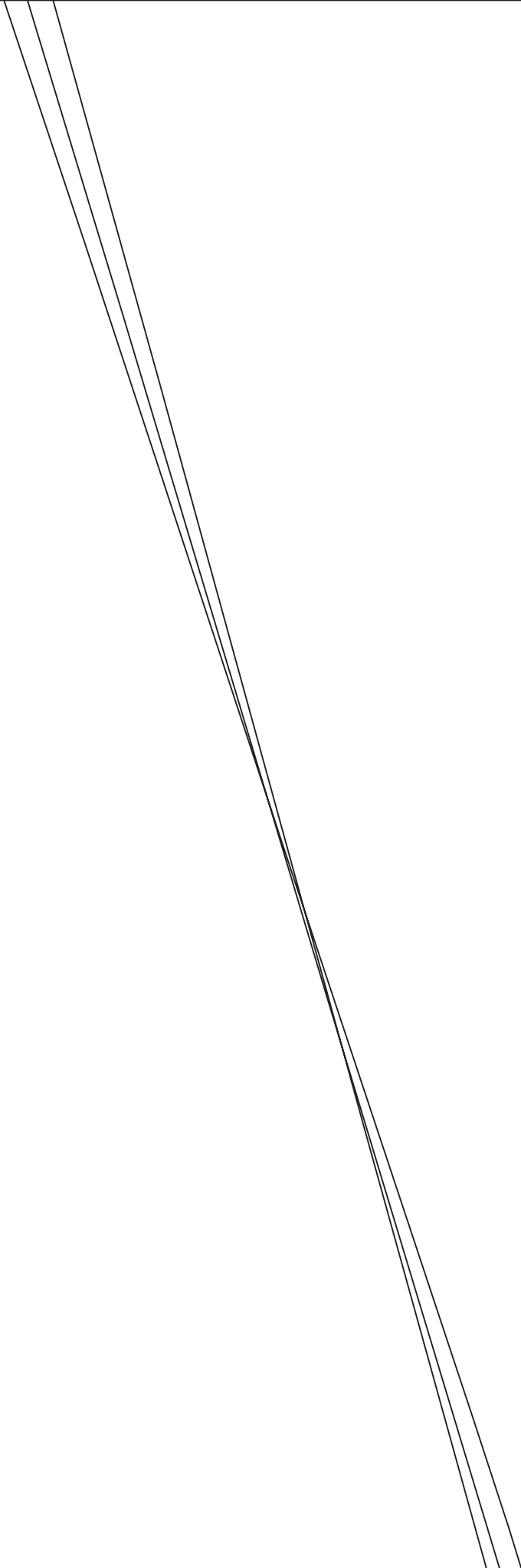
GRAIN LINE

#1 BIRDIE DRESS
FRONT
2T, 3T, 4T
CUT 1 SELF



5

6



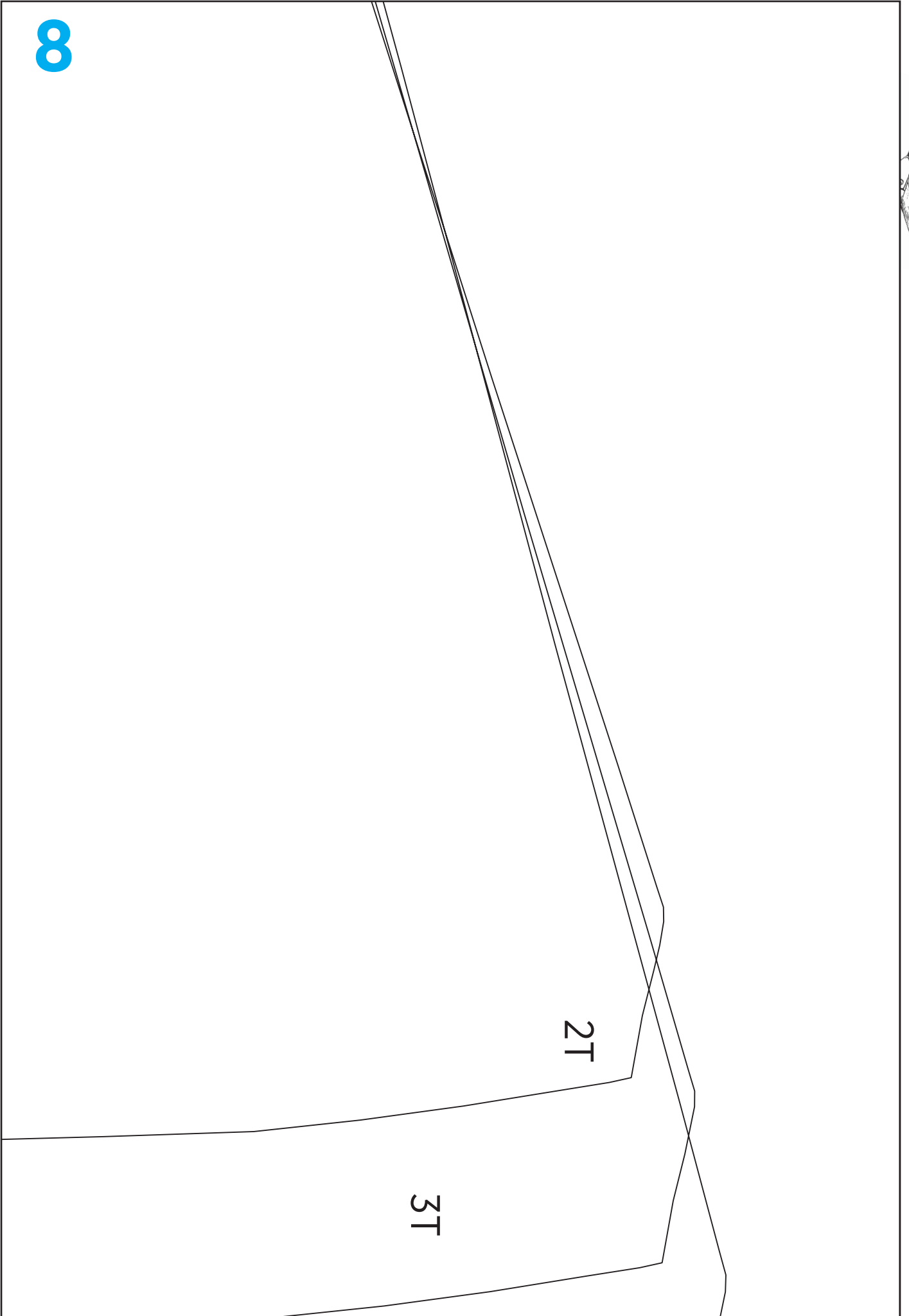


AIN LINE

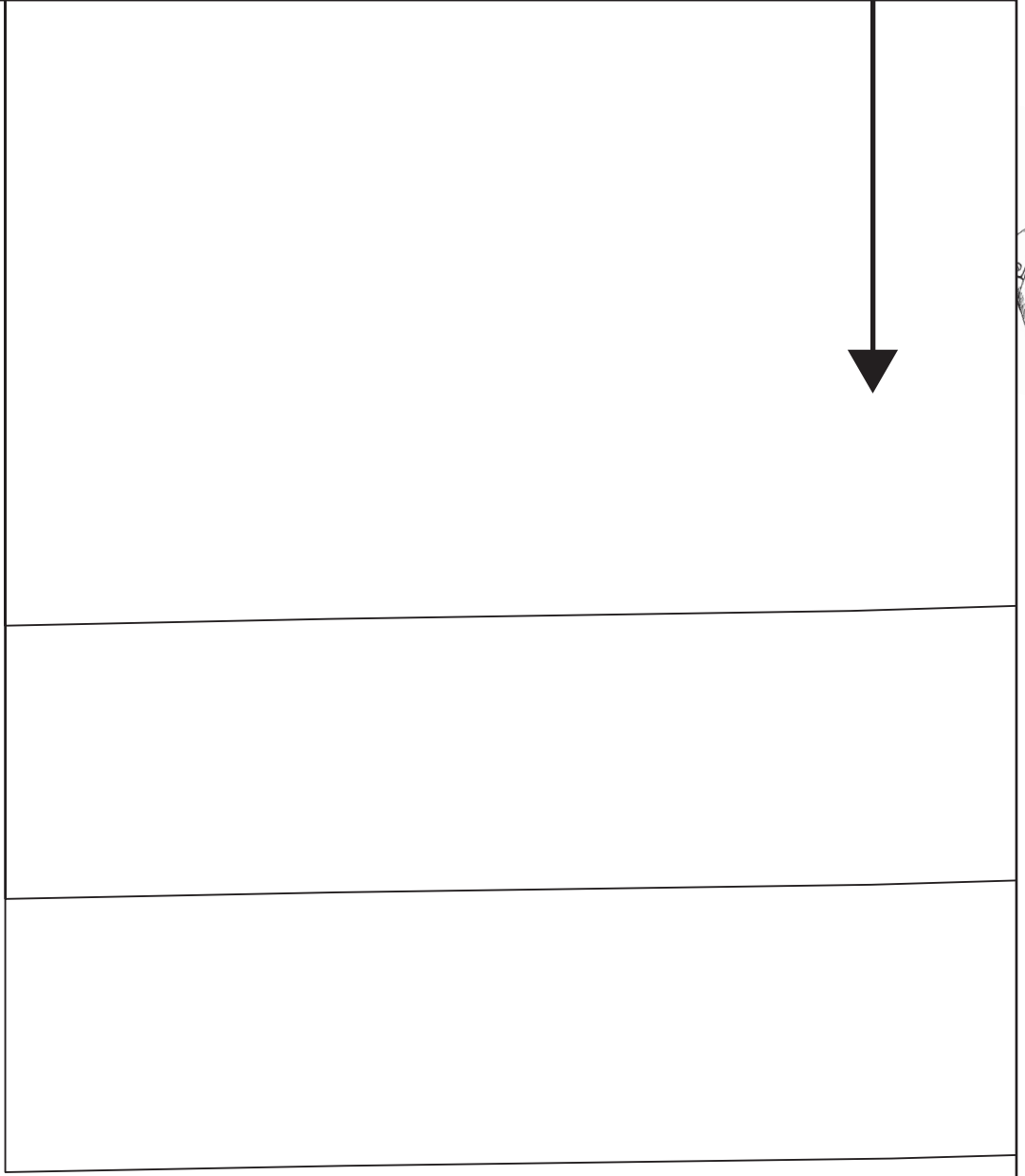


#2 BIRDIE DRESS
BACK
2T, 3T, 4T
CUT 2 SELF

7



Copyright © 2016 by Theresa Gonzalez. From Sunday Sews published by Chronicle Books LLC.



10

2T

3T

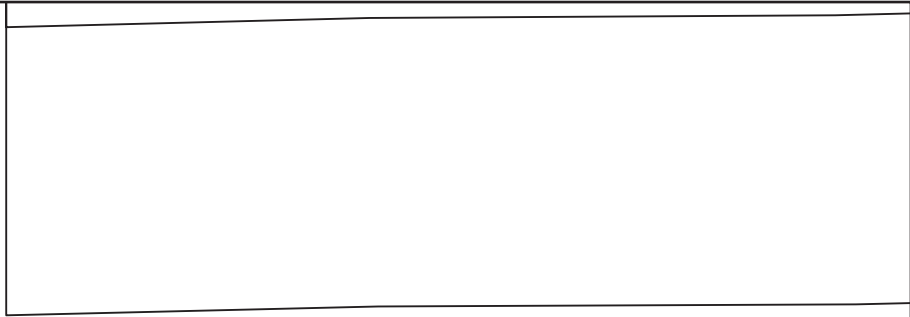
4T



0 in/0 cm 1 in/2.5 cm 2 in/5 cm 3 in/7.5 cm



SCALE AT 100% SIZE
(in inches and centimeters)



#3 BIP
SLEEV
2T, 3T
CUT 2

Gather notch

12

4T



RDIE DRESS

E

, 4T

SELF

GRAIN LINE



PLACE ON FOLD

