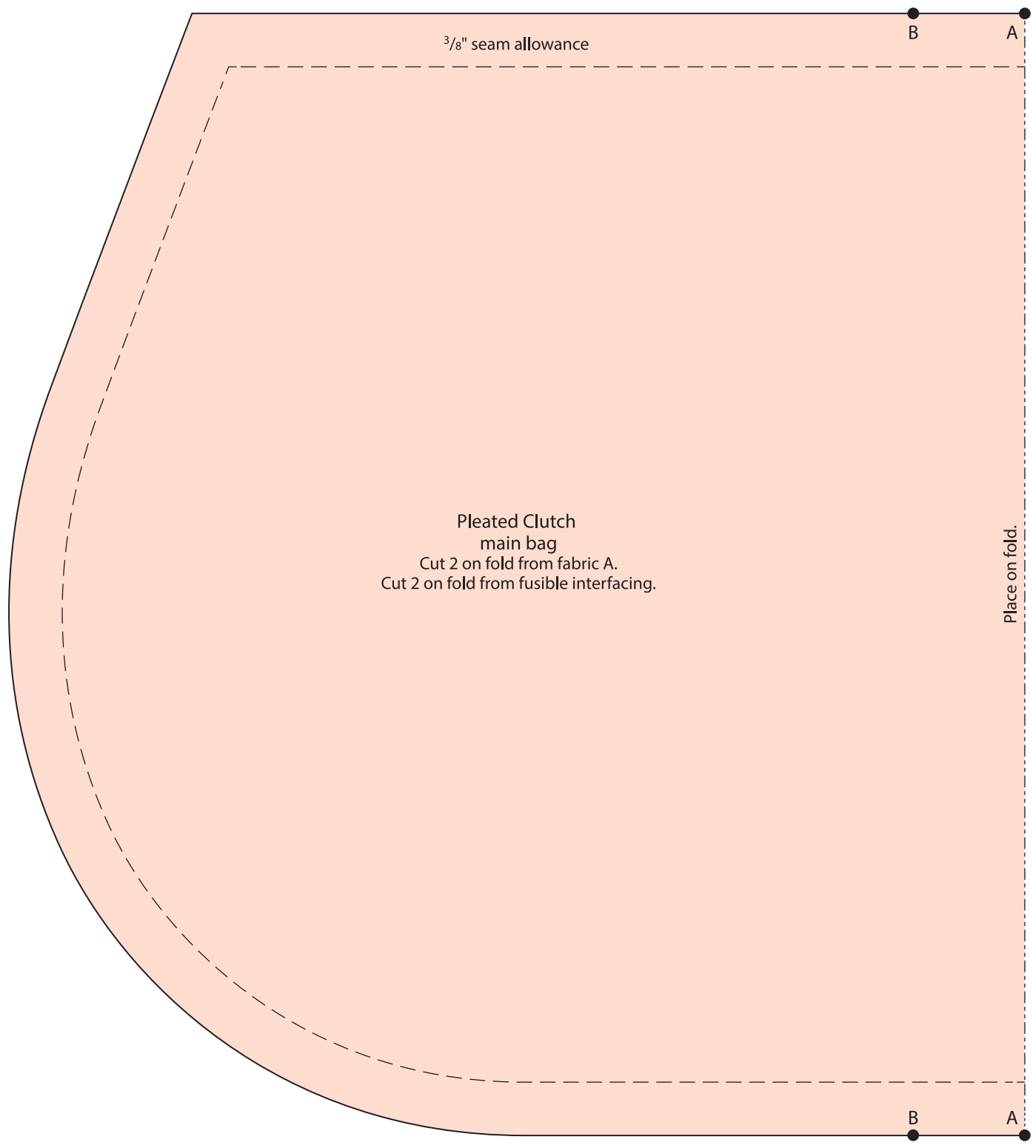




PLEATED CLUTCH PAGE 74

SHOWN AT
100%

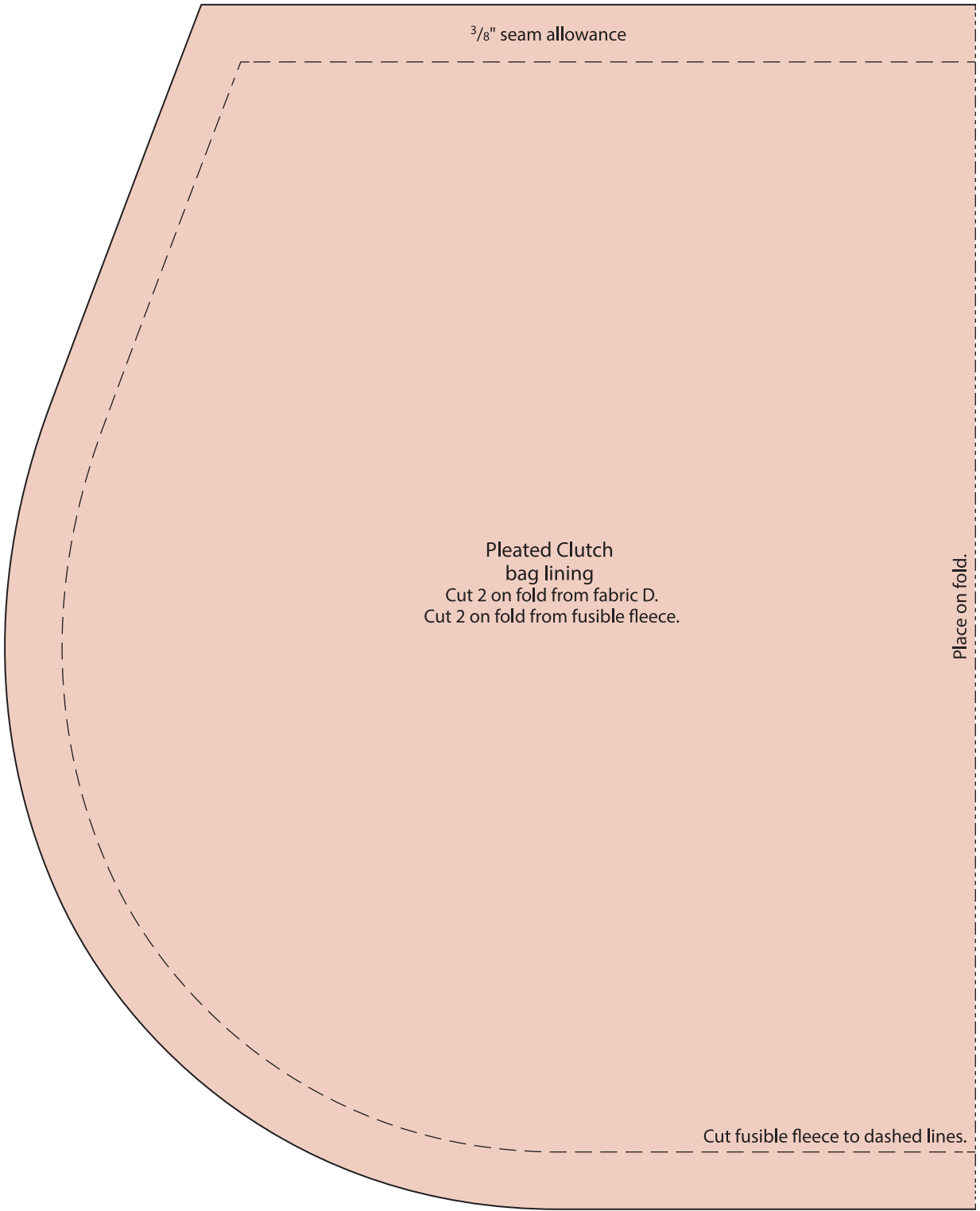


$\frac{3}{8}$ " seam allowance

Pleated Clutch
bag lining
Cut 2 on fold from fabric D.
Cut 2 on fold from fusible fleece.

Place on fold.

Cut fusible fleece to dashed lines.



$\frac{3}{8}$ " seam allowance

Pleated Clutch
flap

- Cut 1 on fold from fabric C.
- Cut 1 on fold from fabric D.
- Cut 2 on fold from fusible interfacing.
- Cut 1 on fold from fusible fleece.

Place on fold.

Cut fusible fleece to dashed lines.