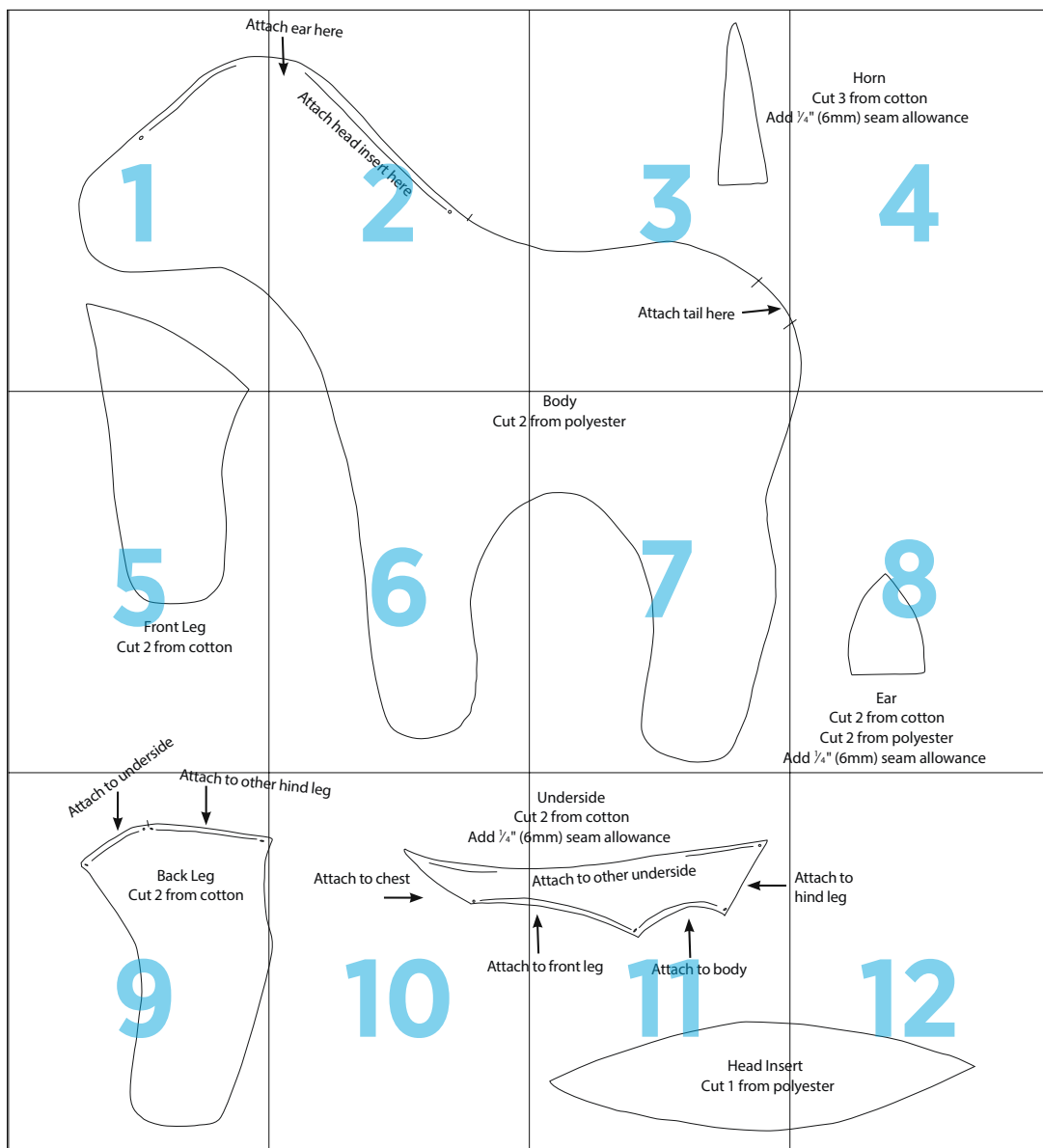
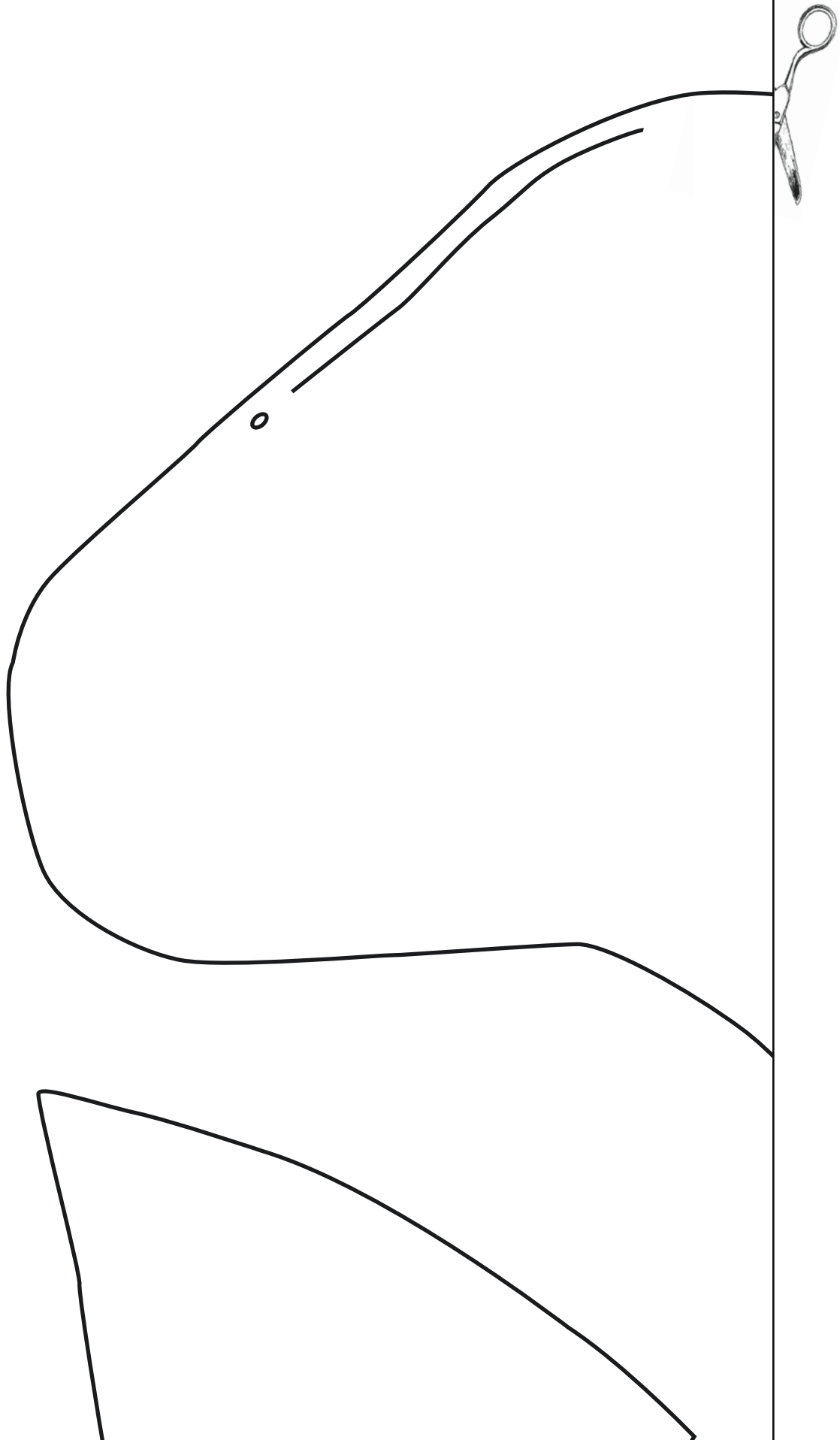


Unicorn



1

Attache



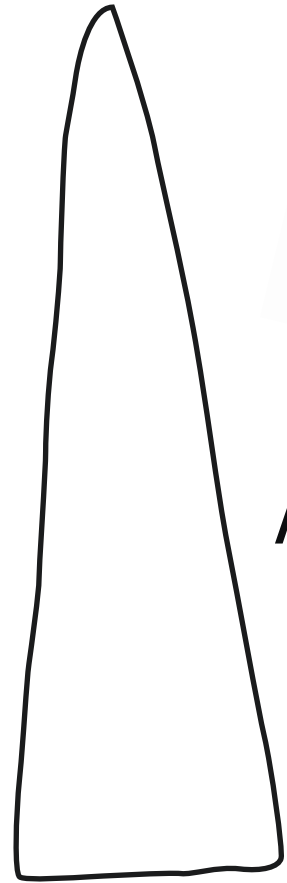
2
ach ear here



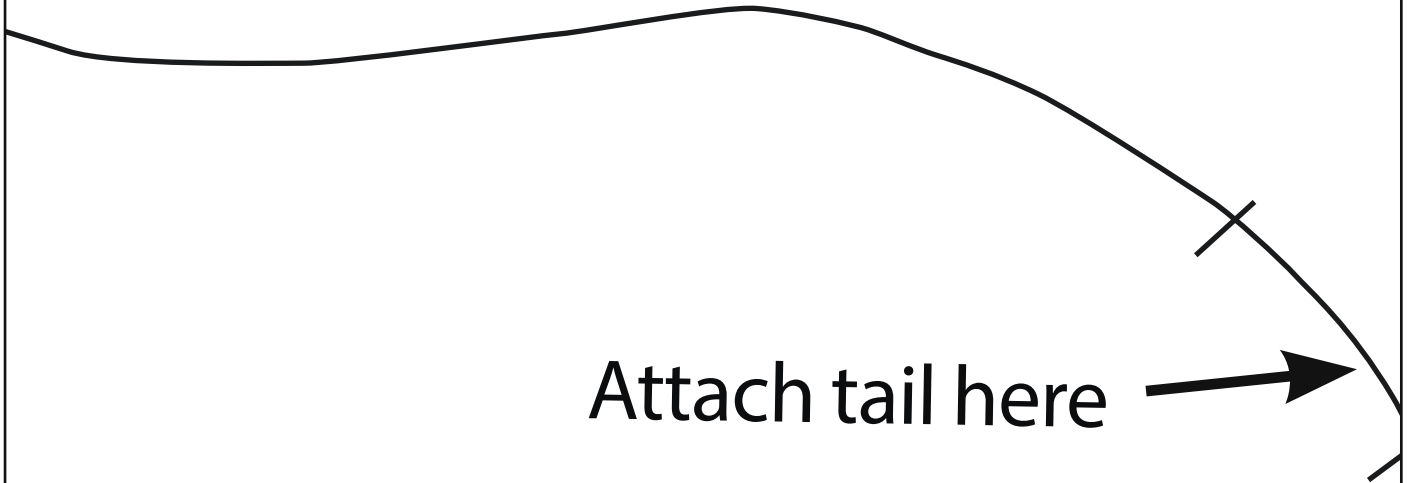
Attach head insert here



3



Add



Attach tail here

4

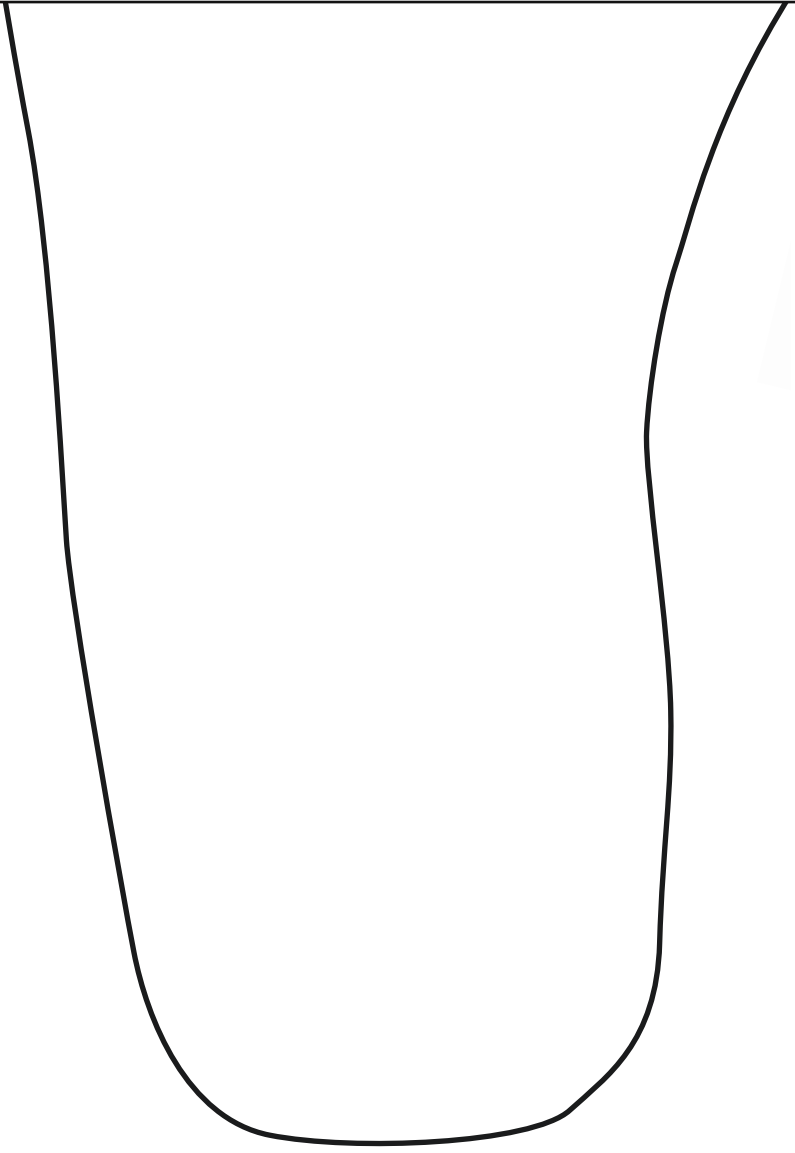
Horn

Cut 3 from cotton

$\frac{1}{4}$ " (6mm) seam allowance



5

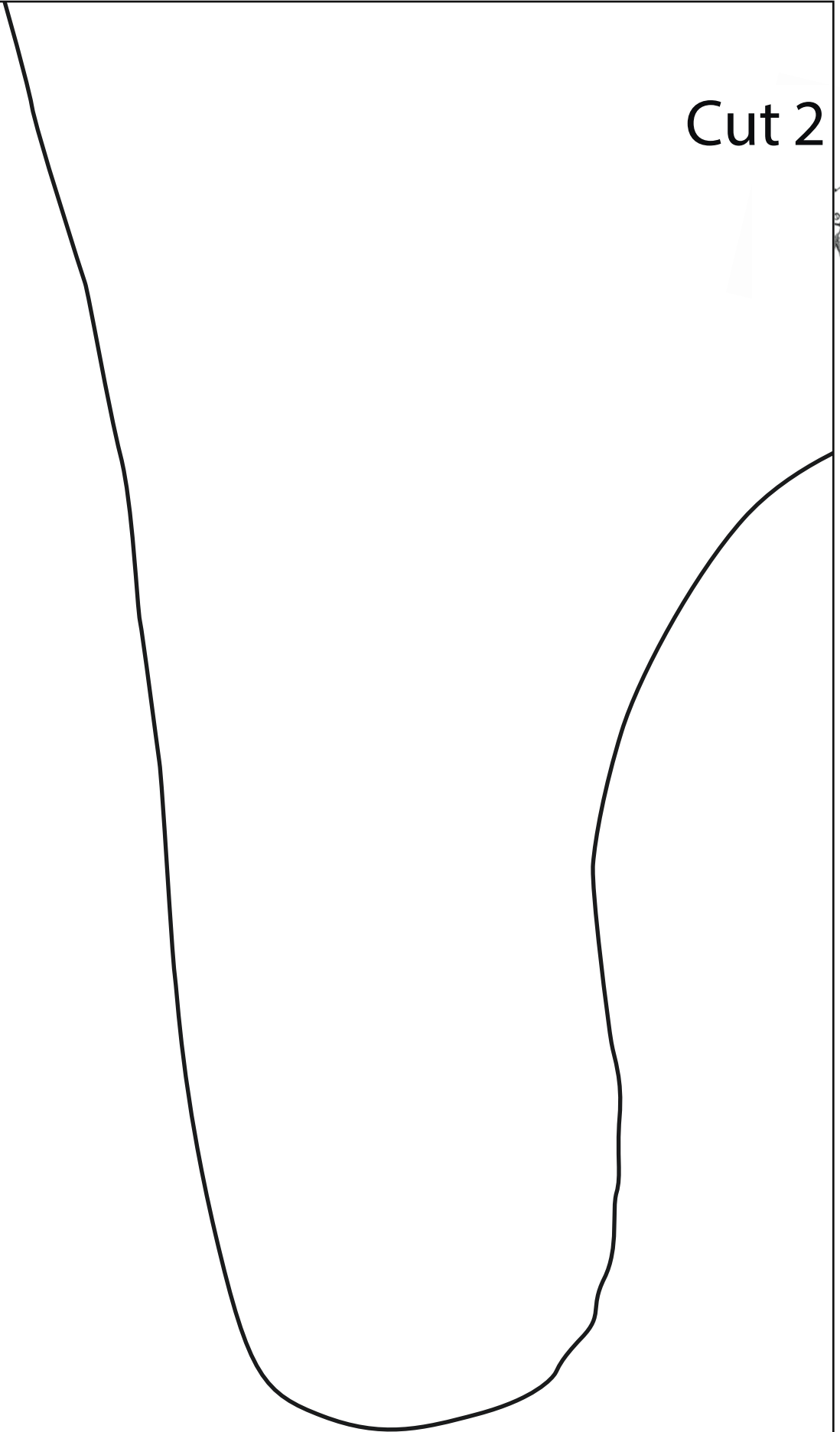


Front Leg
Cut 2 from cotton

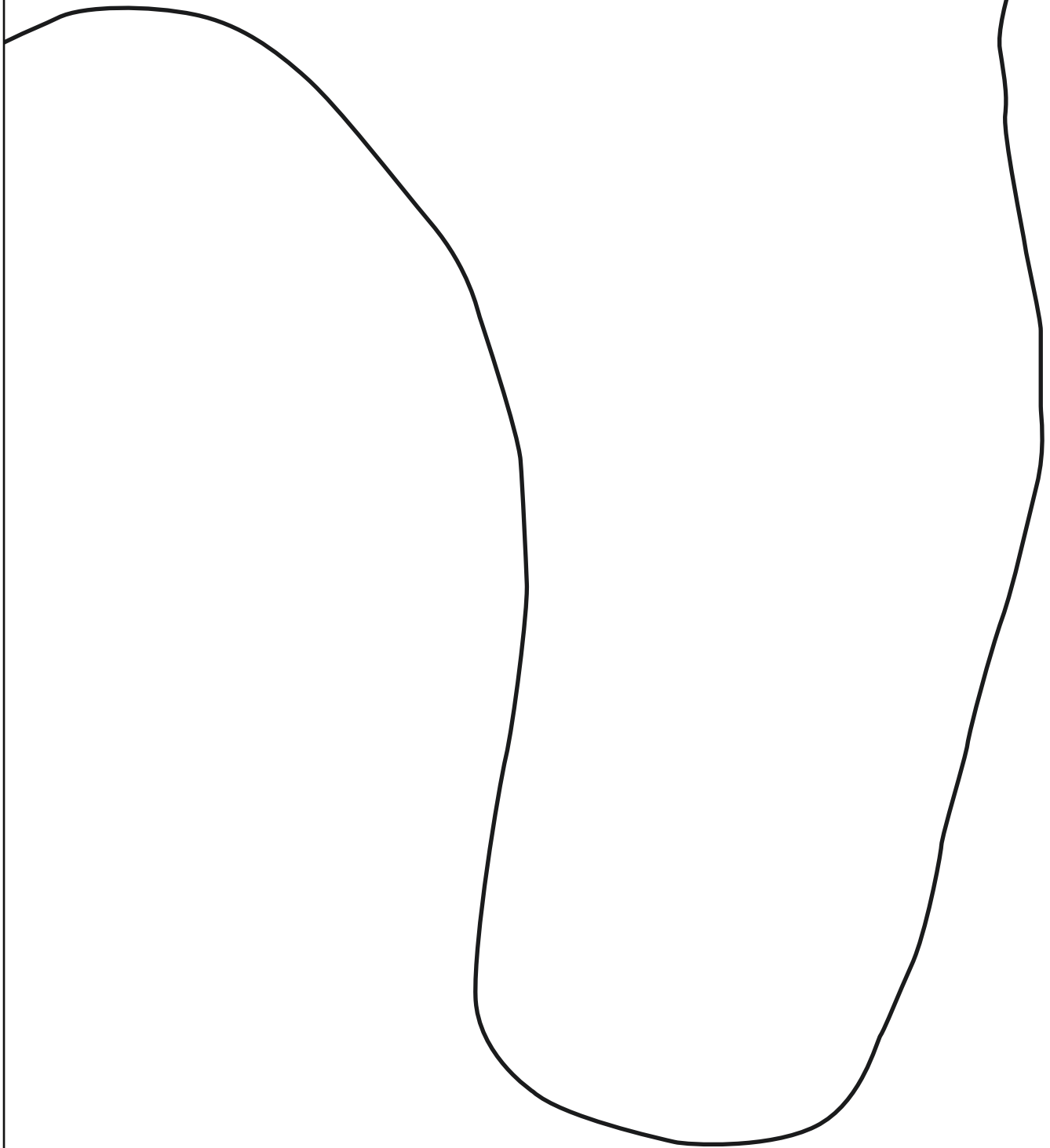
nderside

6

Cut 2

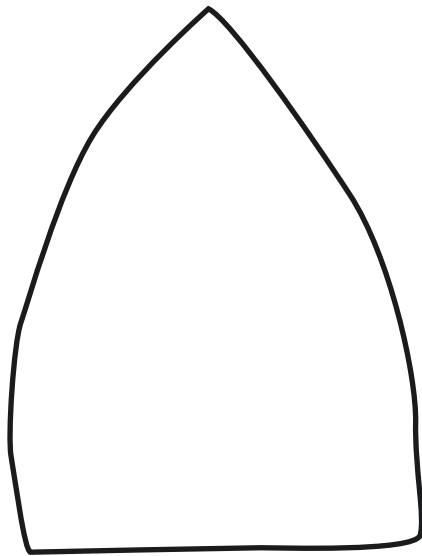


7 Body from polyester



A

8



Ear

Cut 2 from cotton

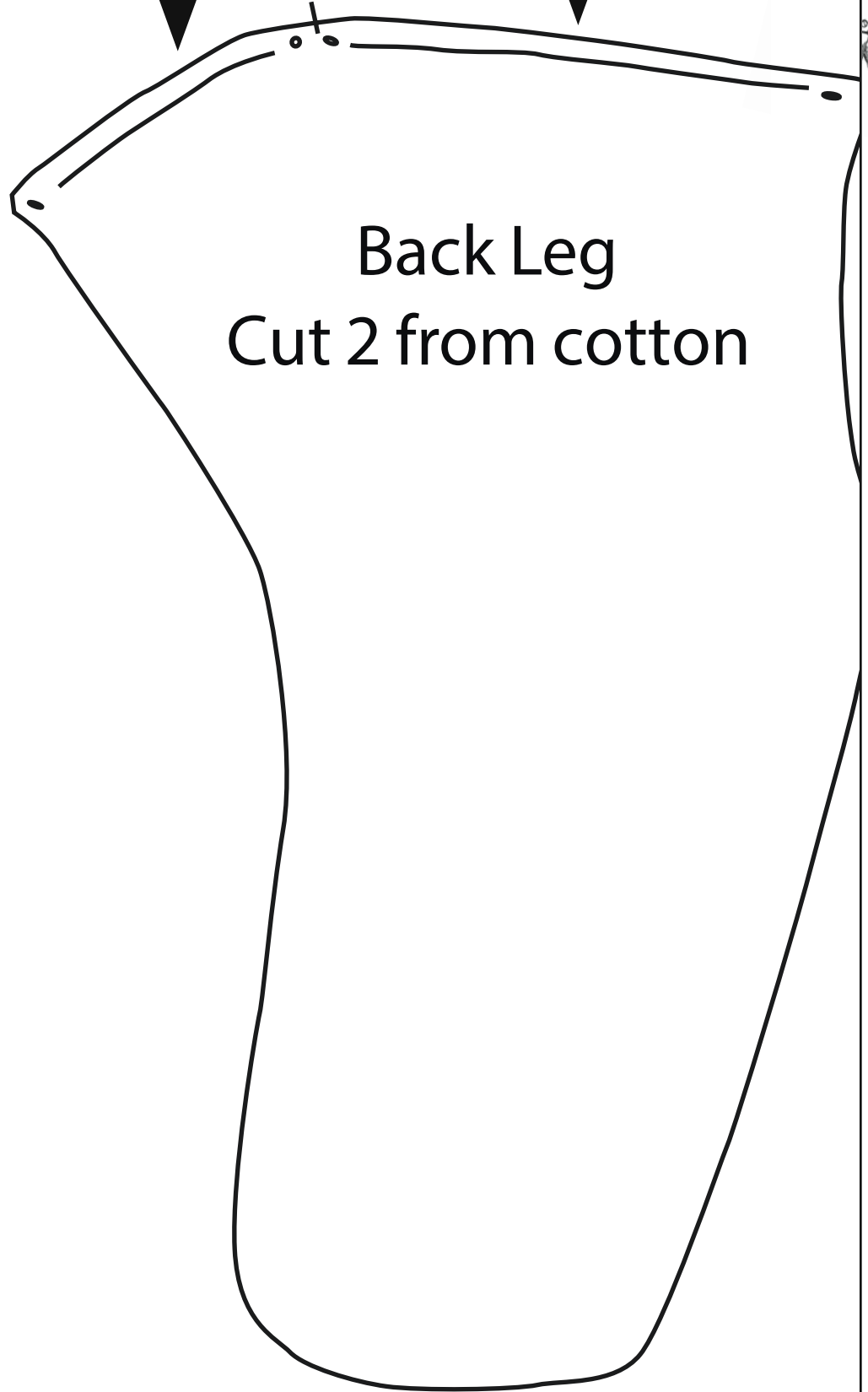
Cut 2 from polyester

Add $\frac{1}{4}$ " (6mm) seam allowance

9

Attach to un

Attach to othe



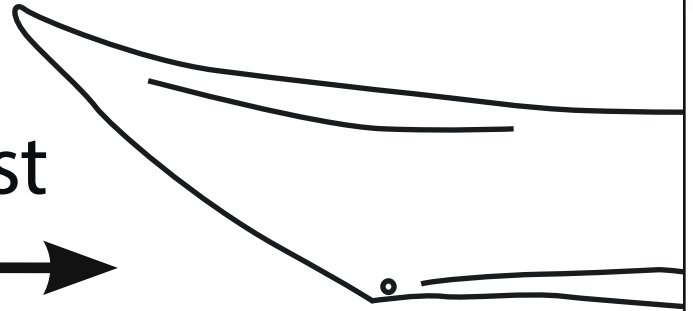
Back Leg
Cut 2 from cotton

10
er hind leg

Cu
Add 1/4" (6



Attach to chest



Attach

11

Underside

cut 2 from cotton

(5mm) seam allowance

Attach to other underside

↑
to front leg

↑
Attach to body

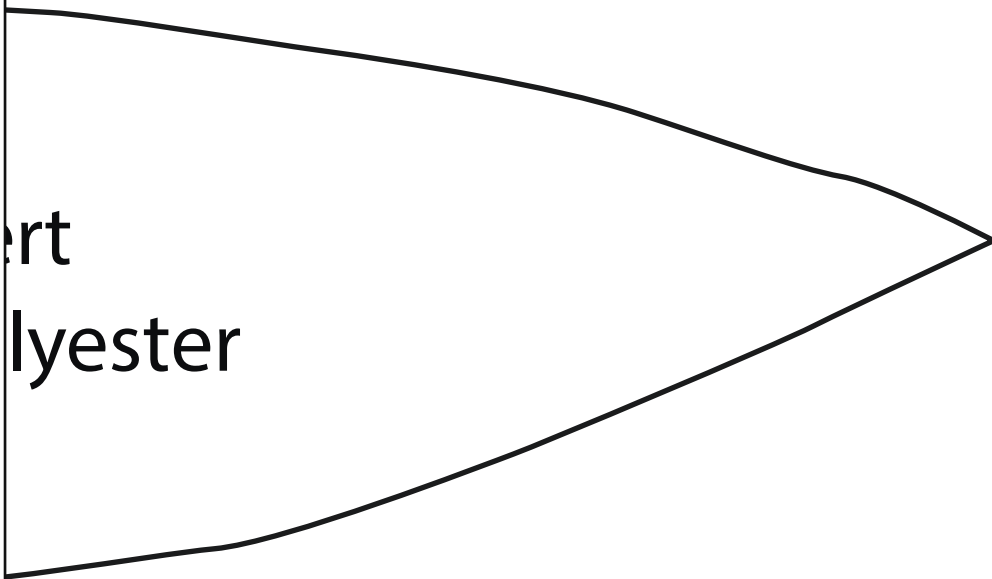
Head Inseam
Cut 1 from pattern



12



Attach to
hind leg



ert
lyester