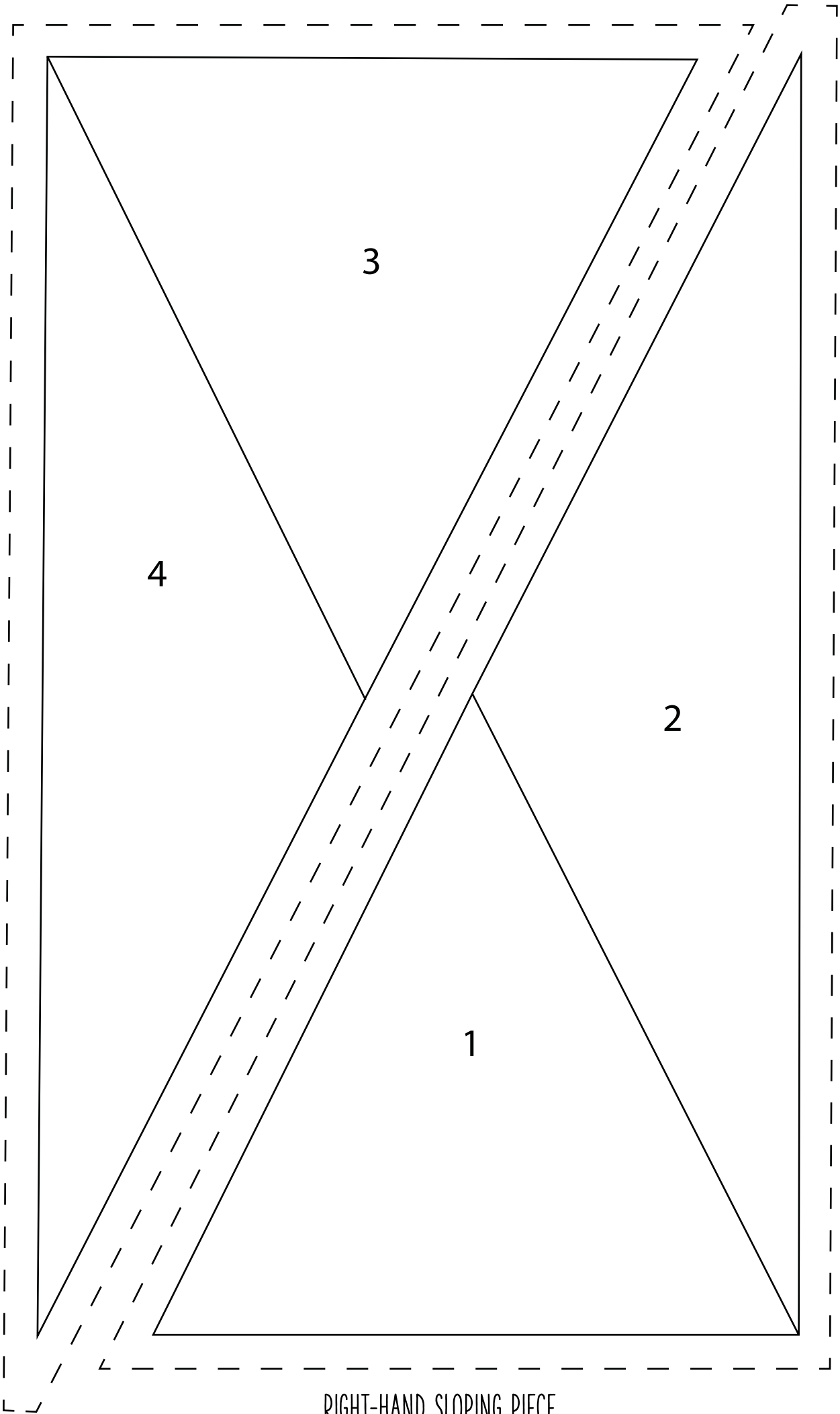
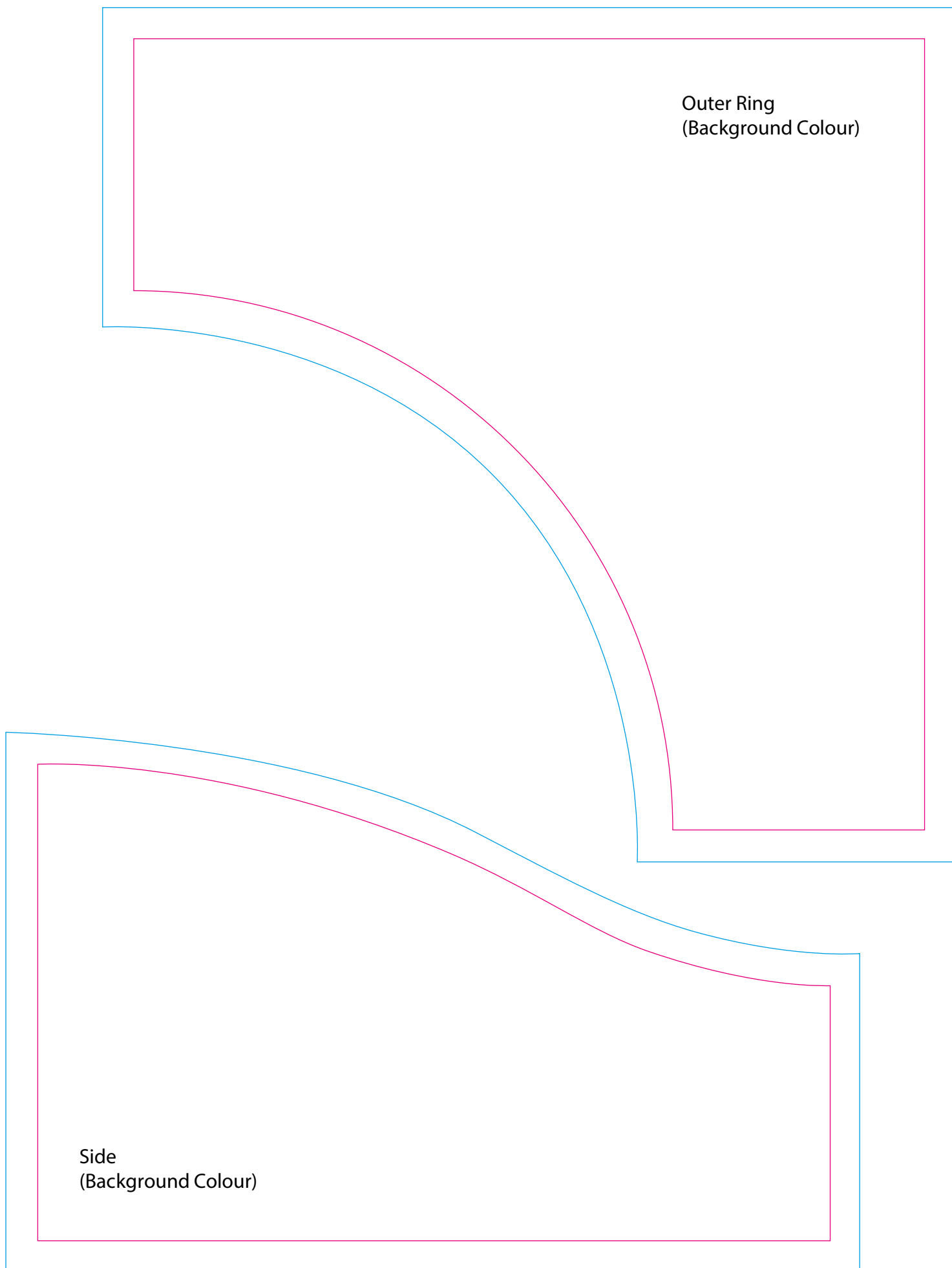


MINI QUILT PAGE 46 LEFT-HAND SLOPING PIECE

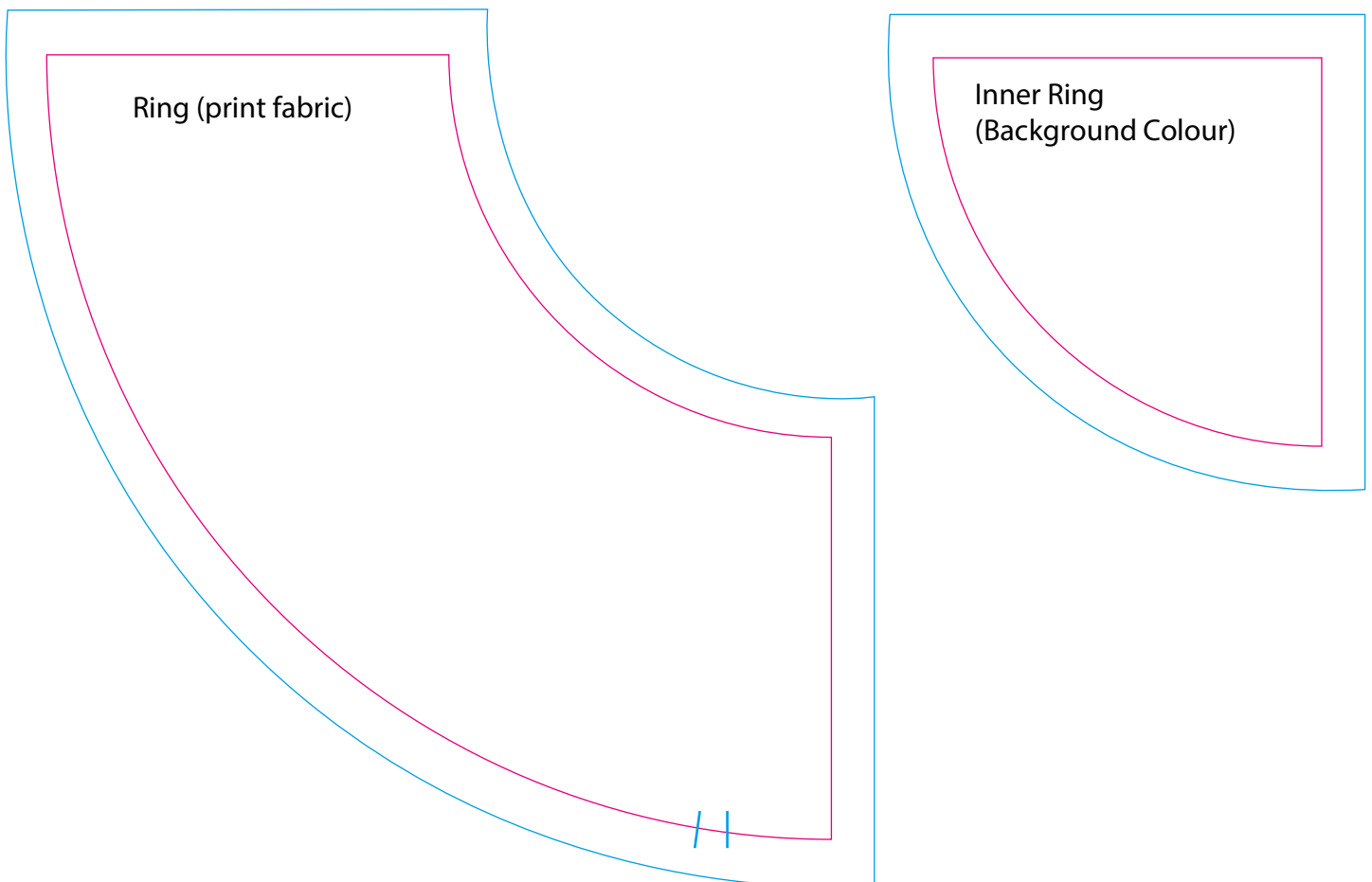
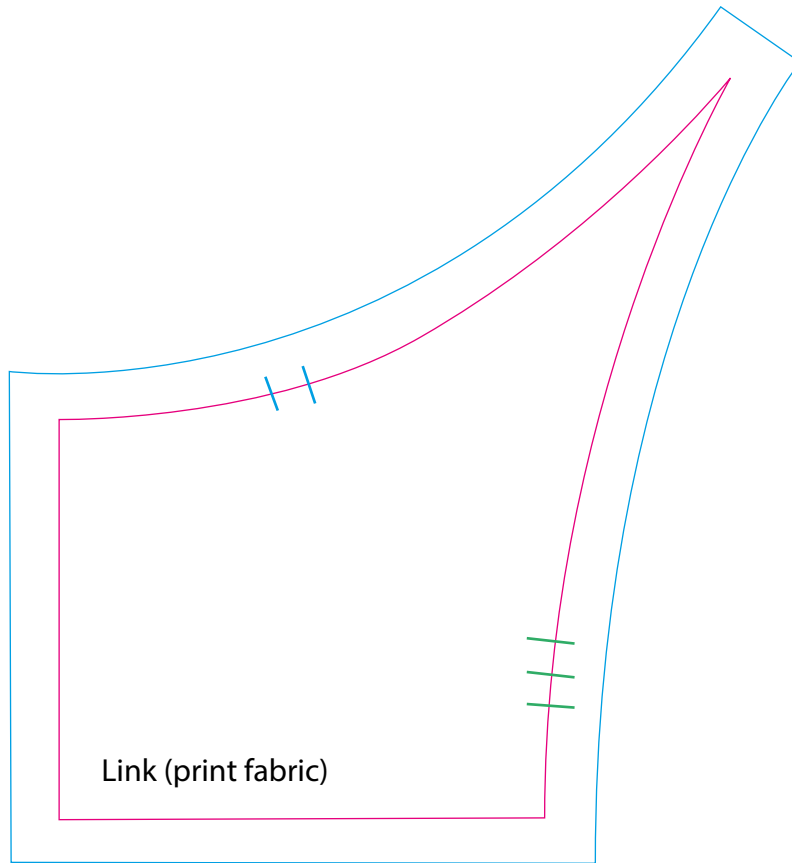


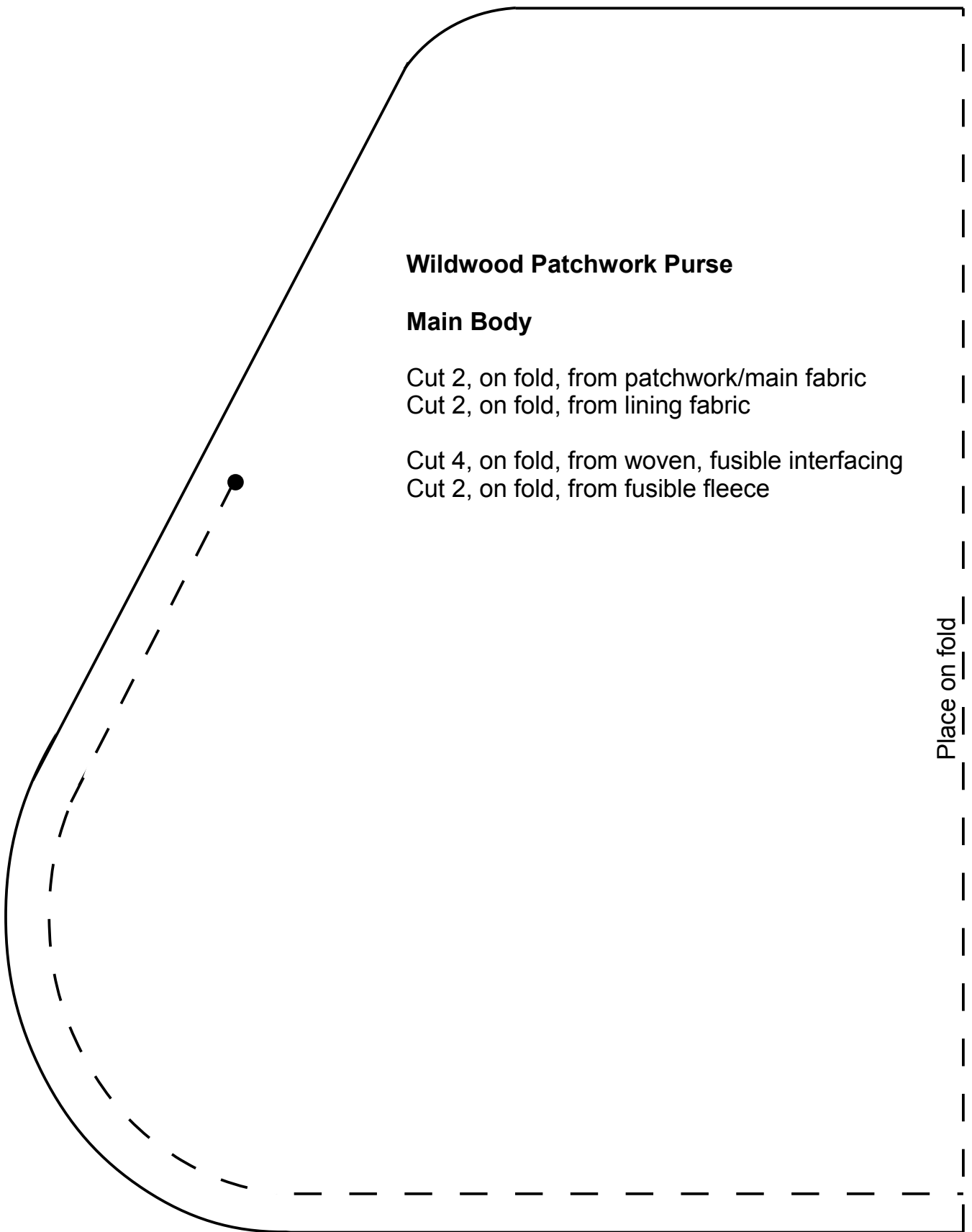
RIGHT-HAND SLOPING PIECE



Outer Ring  
(Background Colour)

Side  
(Background Colour)





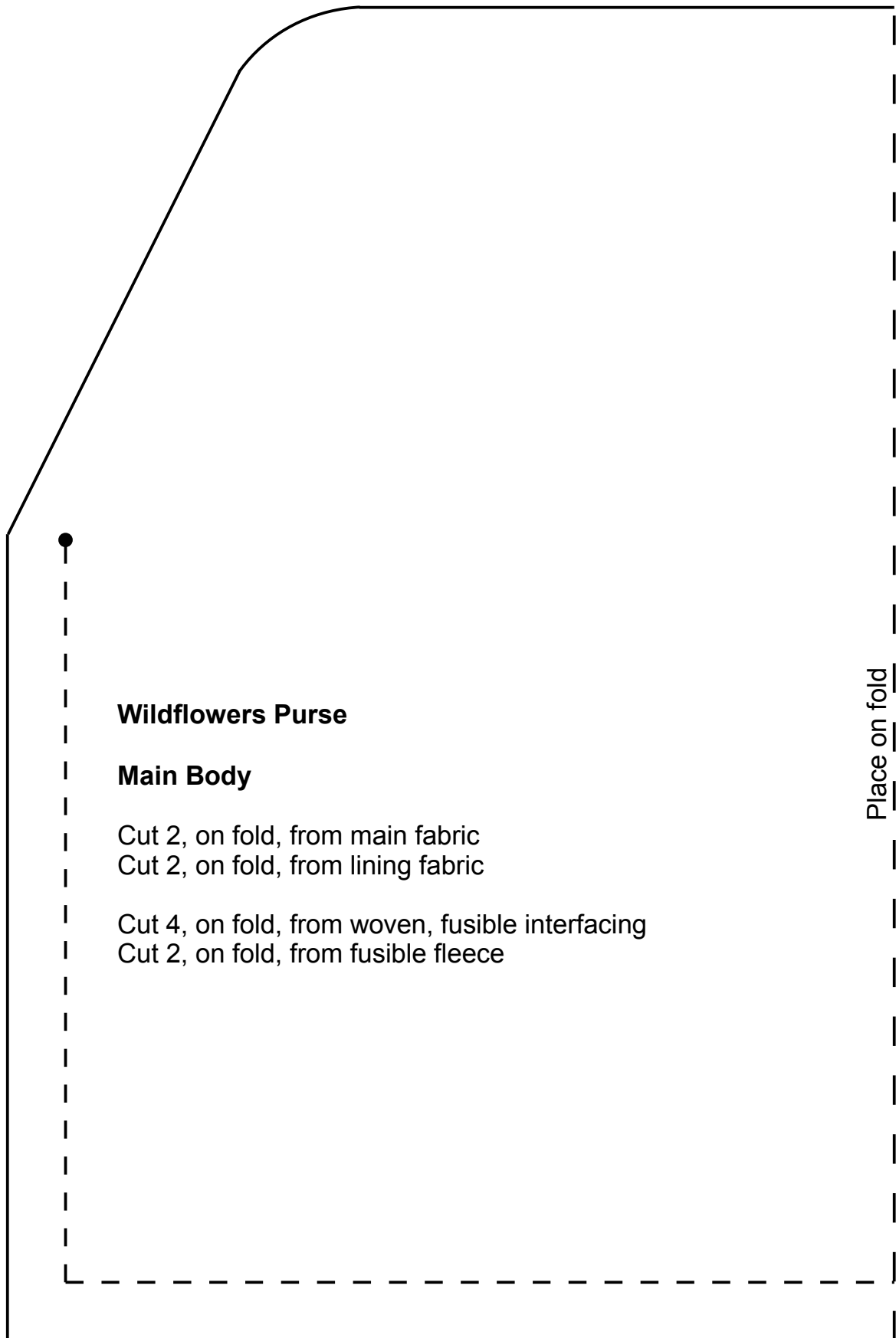
**Wildwood Patchwork Purse**

**Main Body**

Cut 2, on fold, from patchwork/main fabric  
Cut 2, on fold, from lining fabric

Cut 4, on fold, from woven, fusible interfacing  
Cut 2, on fold, from fusible fleece

Place on fold



**Wildflowers Purse**

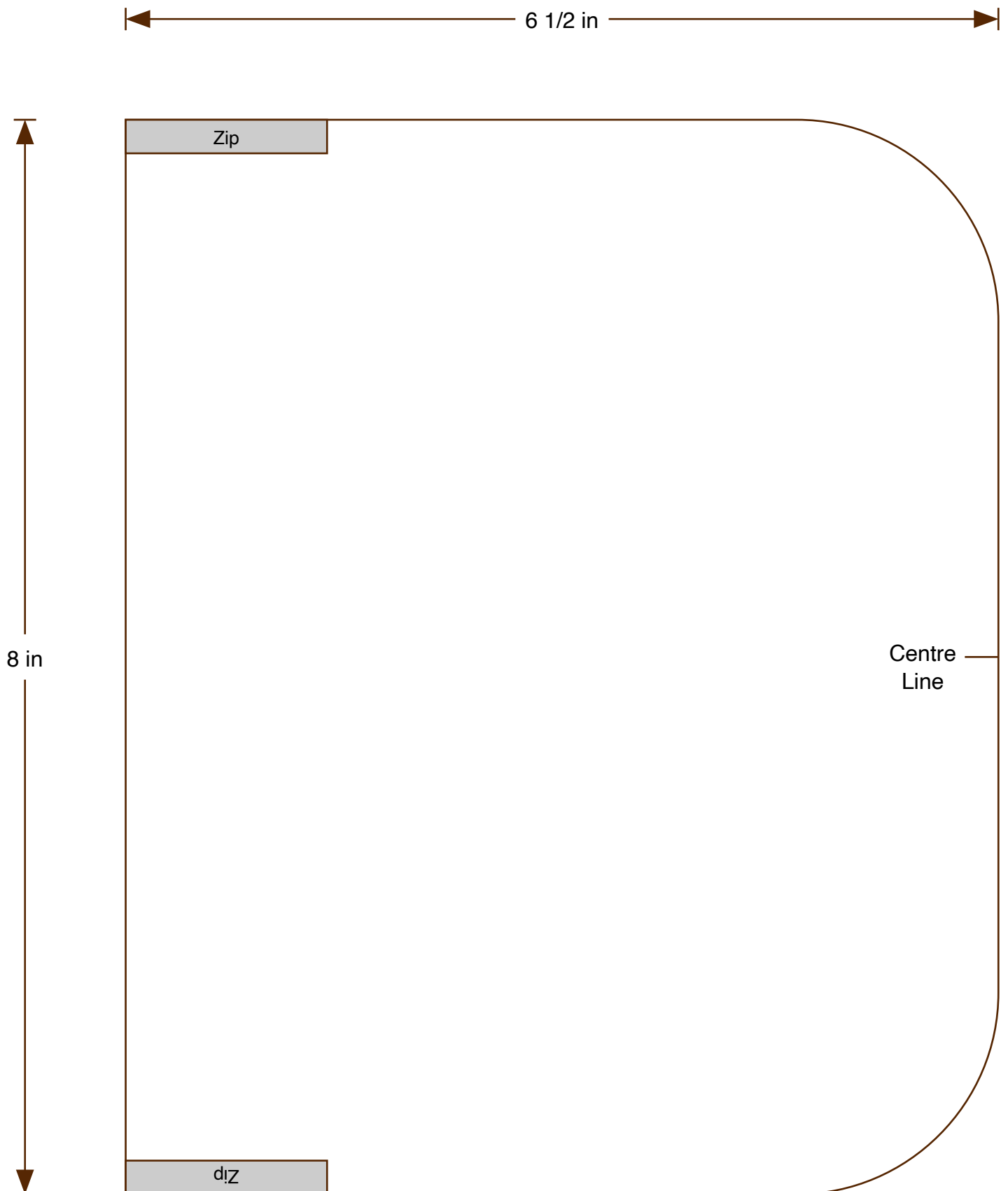
**Main Body**

Cut 2, on fold, from main fabric  
Cut 2, on fold, from lining fabric

Cut 4, on fold, from woven, fusible interfacing  
Cut 2, on fold, from fusible fleece

Place on fold

COSMETIC POUCH  
PAGE 77



COSMETIC POUCH  
PAGE 77

