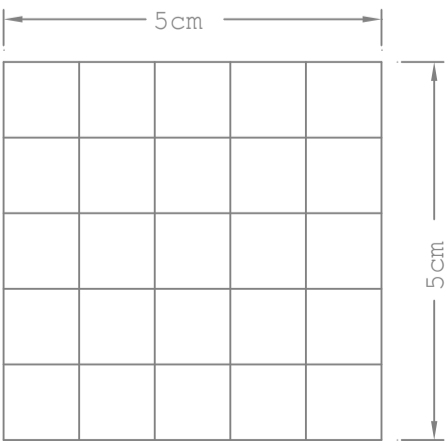


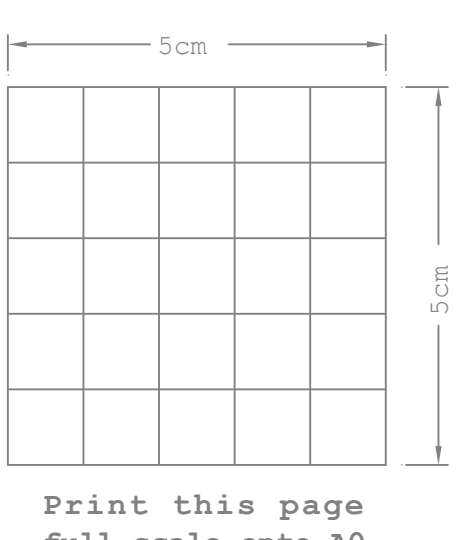
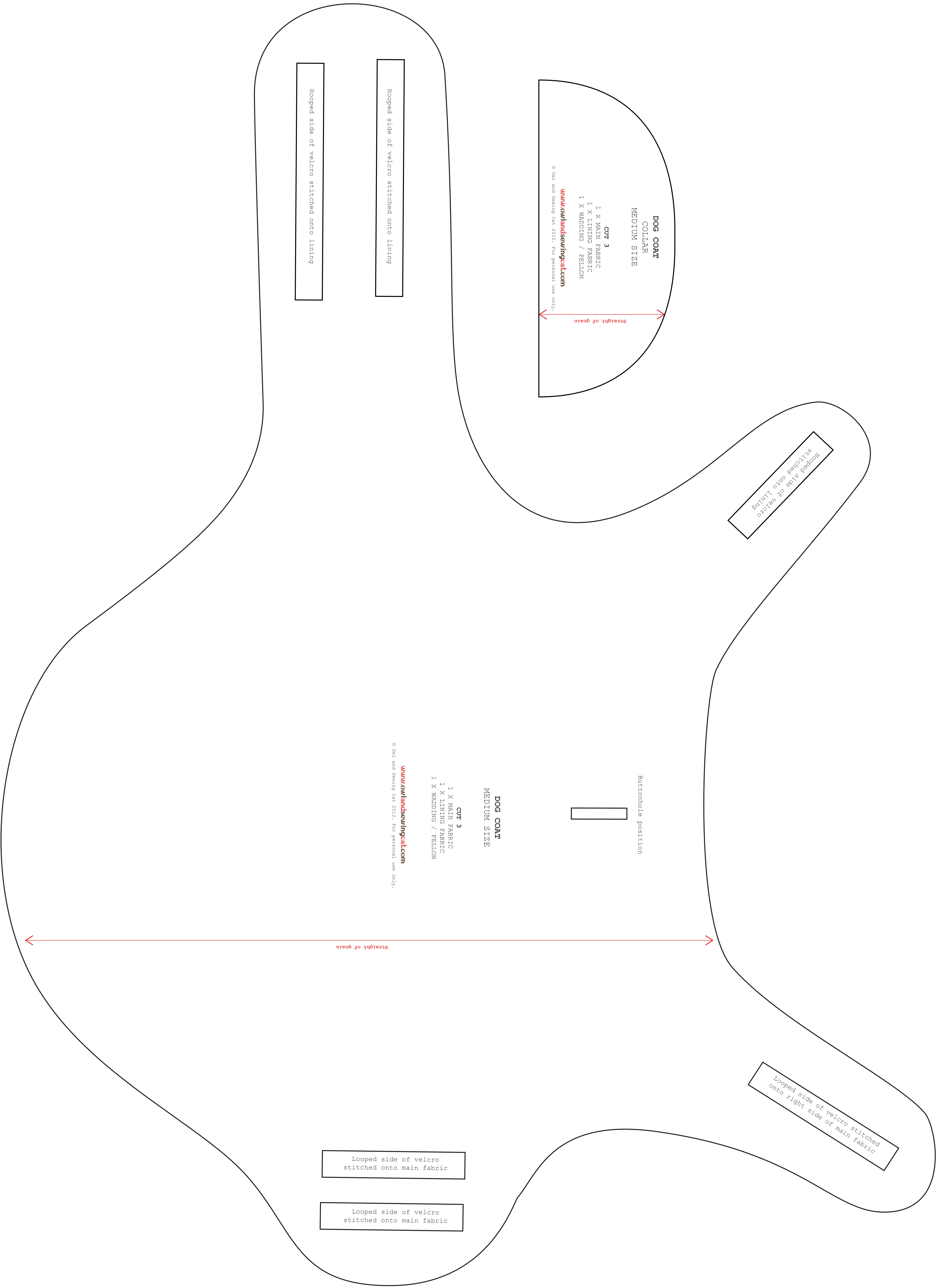
Hopped side of velcro stitched onto lining

Hopped side of velcro stitched onto lining

Looped side of velcro
stitched onto main fabric

Looped side of velcro
stitched onto main fabric



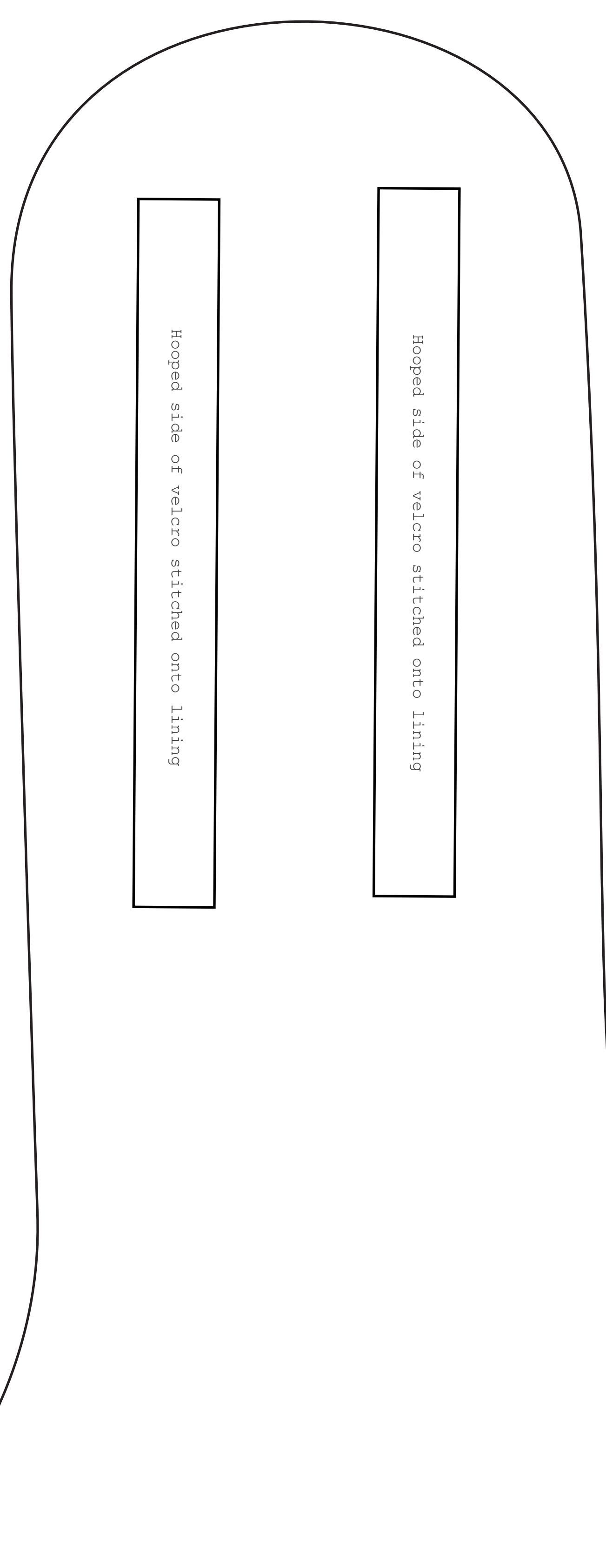




© 2011 and Sewing Co. 2012. For personal use only.
www.ourlandsewingco.com

DOG COAT
COLLAR
LARGE SIZE

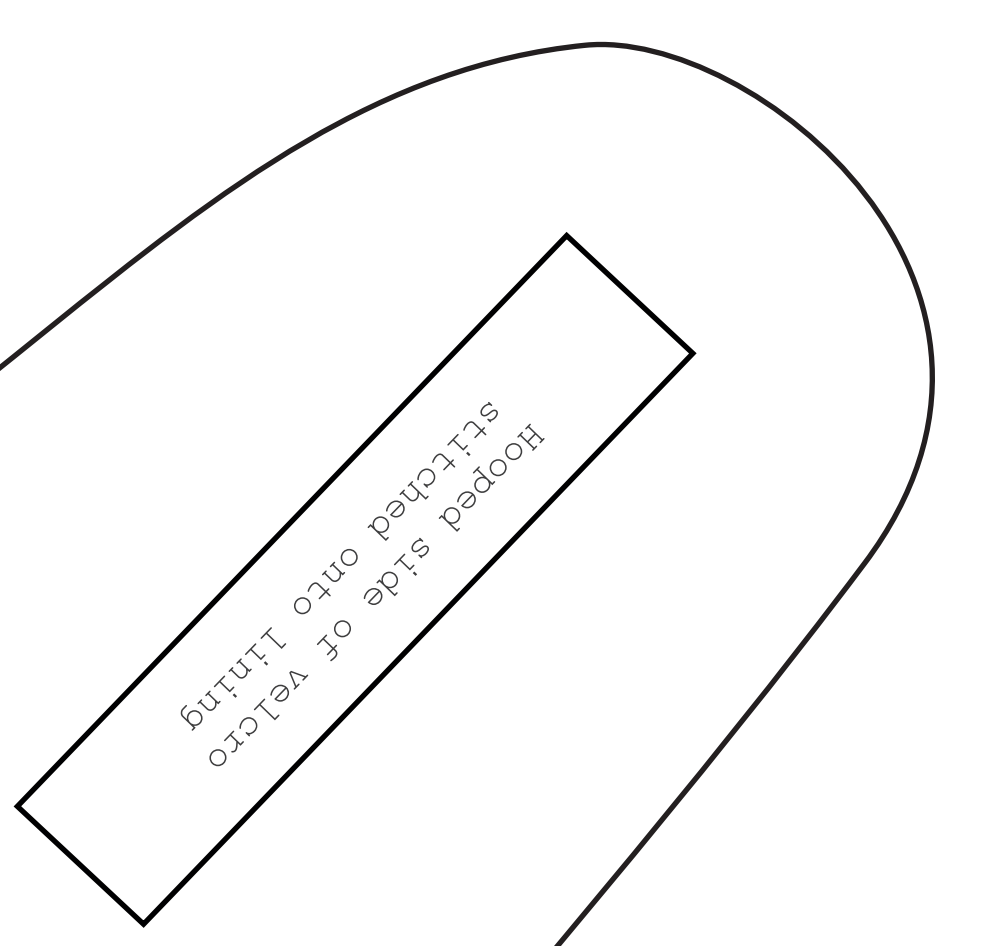
CUT 3
 1 X MAIN FABRIC
 1 X LINING FABRIC
 1 X WADDING / FILLON



Hooped side of velcro stitched onto lining

Hooped side of velcro stitched onto lining

Hooped side of velcro stitched onto lining



Hooped side of velcro stitched onto lining

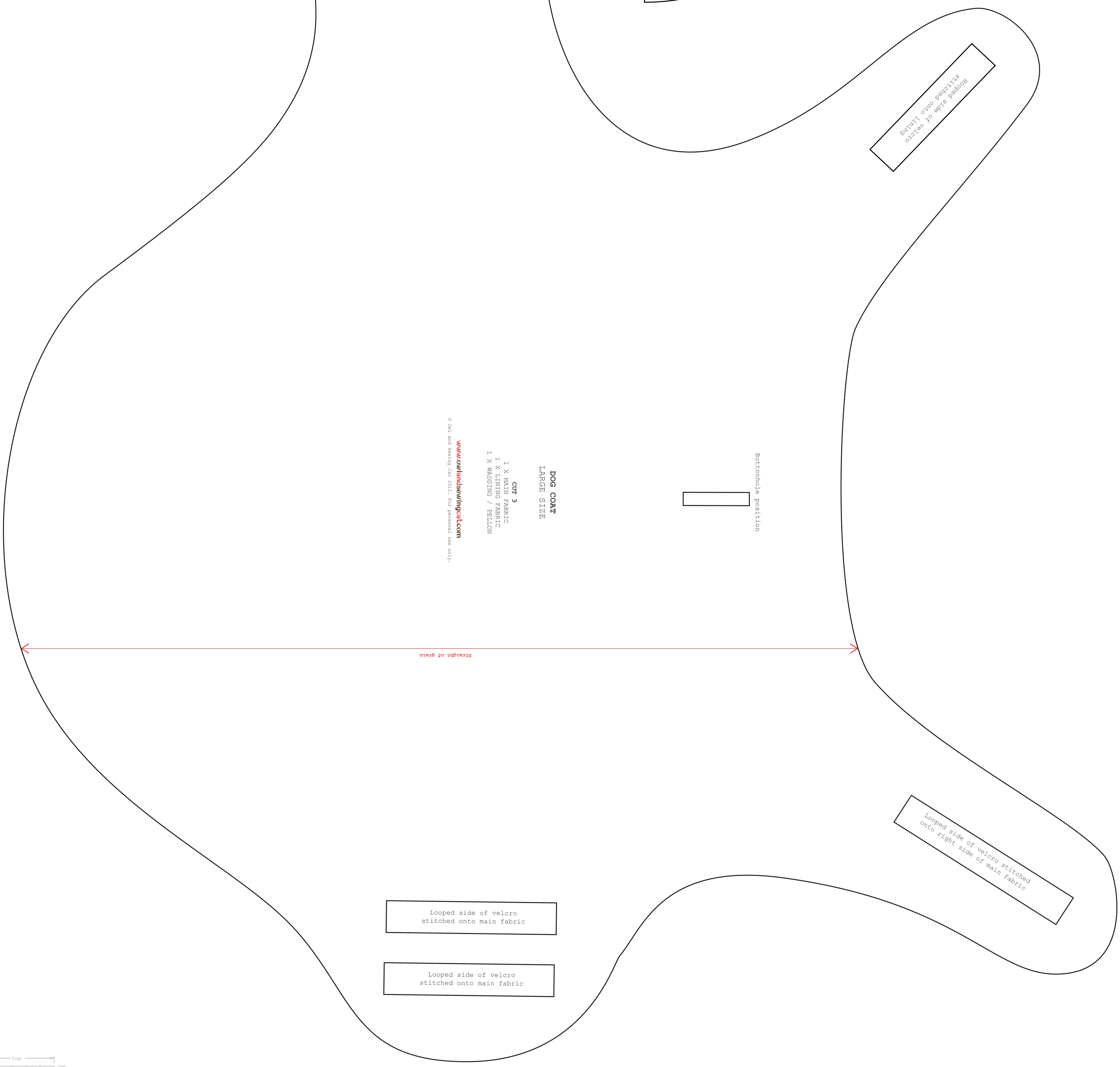


Buttonhole position

DOG COAT
LARGE SIZE

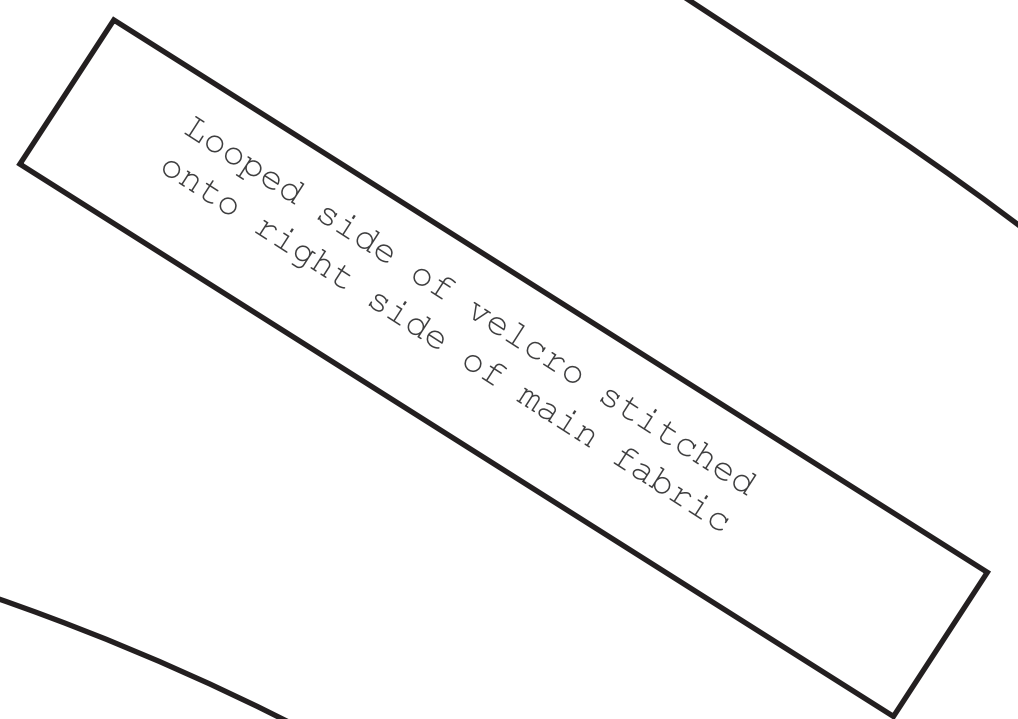
CUT 3
 1 X MAIN FABRIC
 1 X LINING FABRIC
 1 X WADDING / FILLON

www.ourlandsewingco.com
 © 2011 and Sewing Co. 2012. For personal use only.

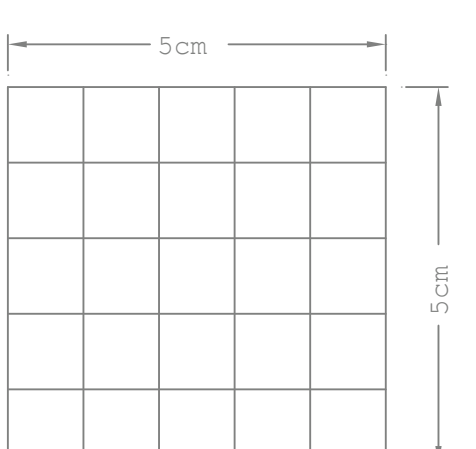


Looped side of velcro stitched onto main fabric

Looped side of velcro stitched onto main fabric



Looped side of velcro stitched onto right side of main fabric



Print this page full scale onto A0