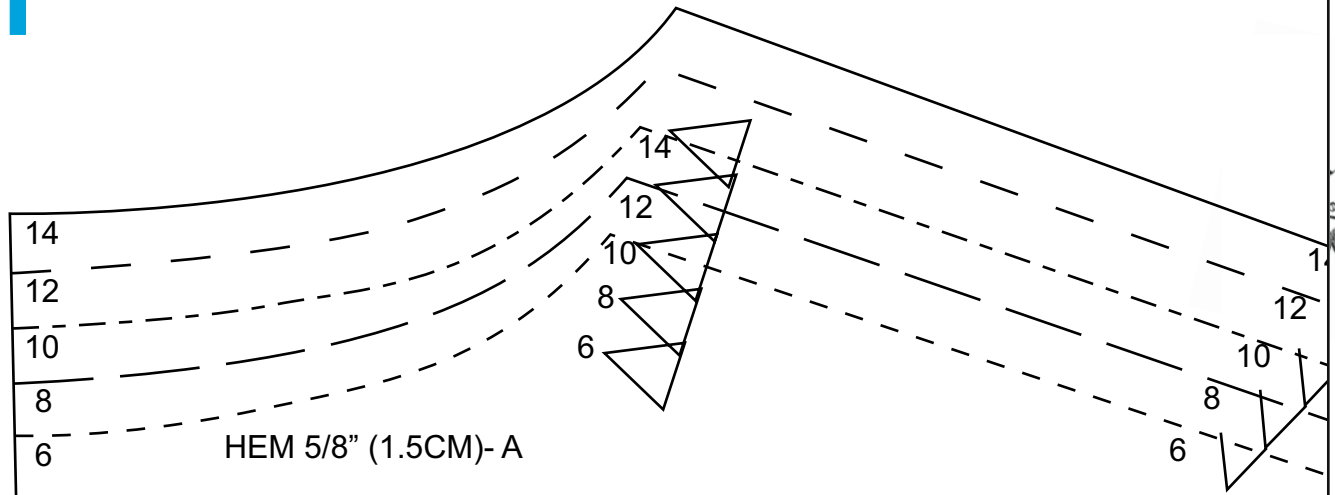


1



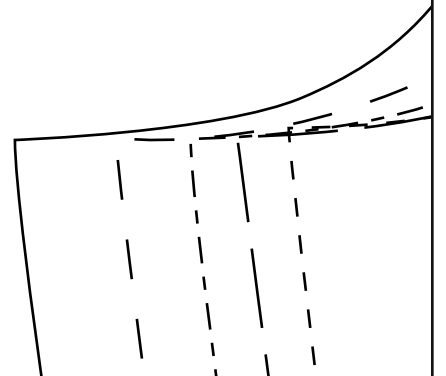
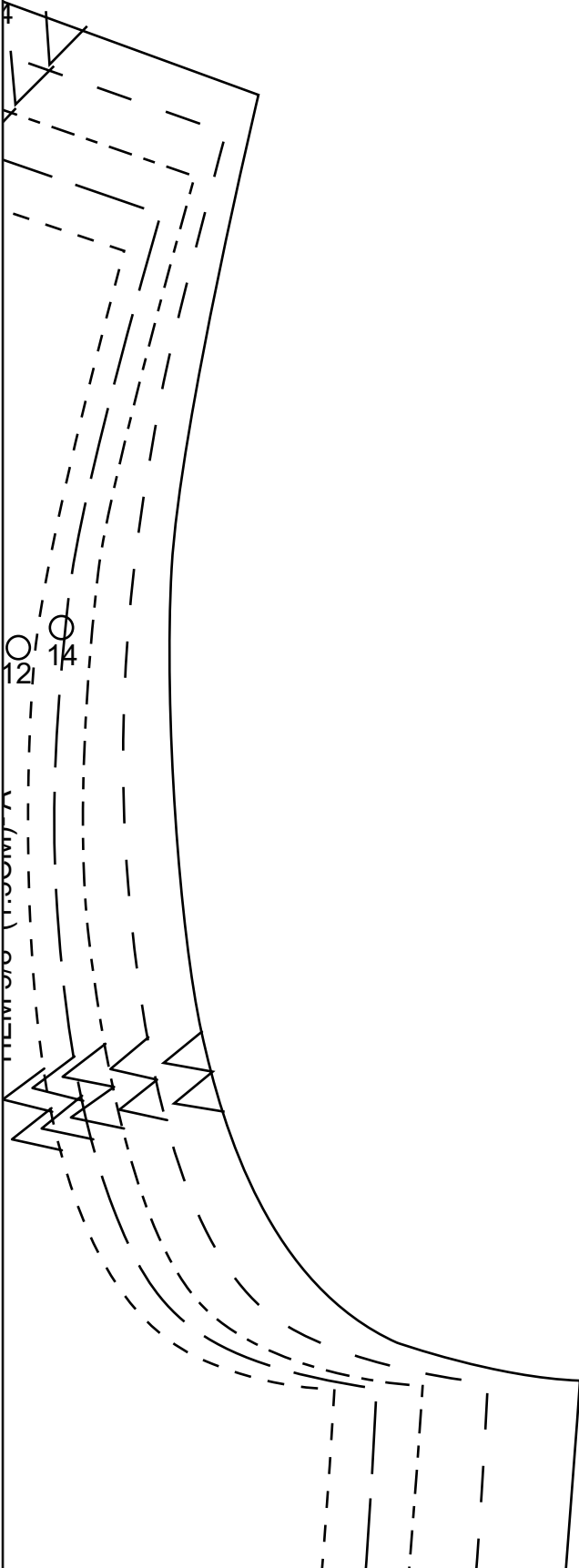
CENTER BACK ON FOLD

3. BACK

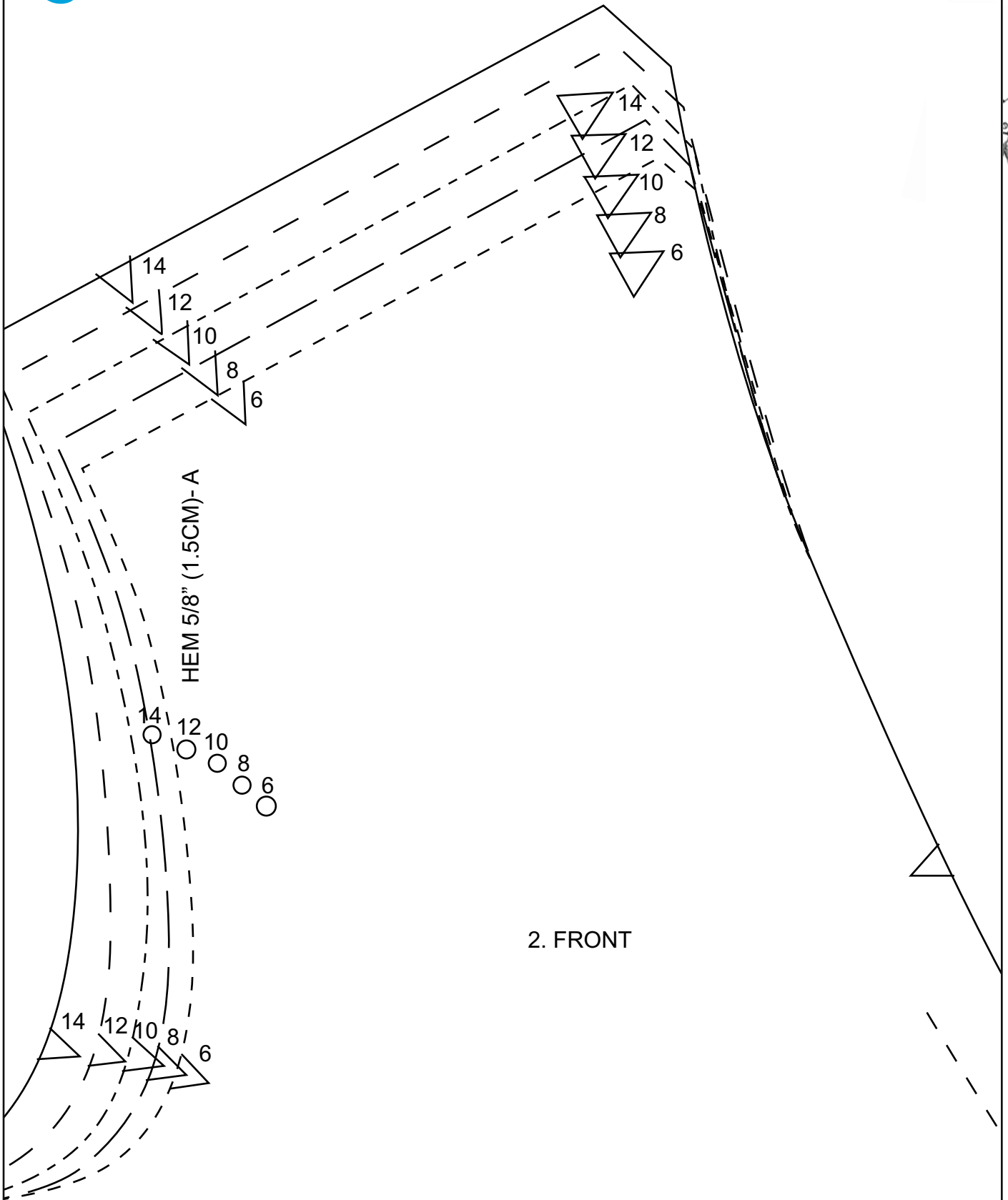
10
8
6

HEM 5/8" (1.5CM) A

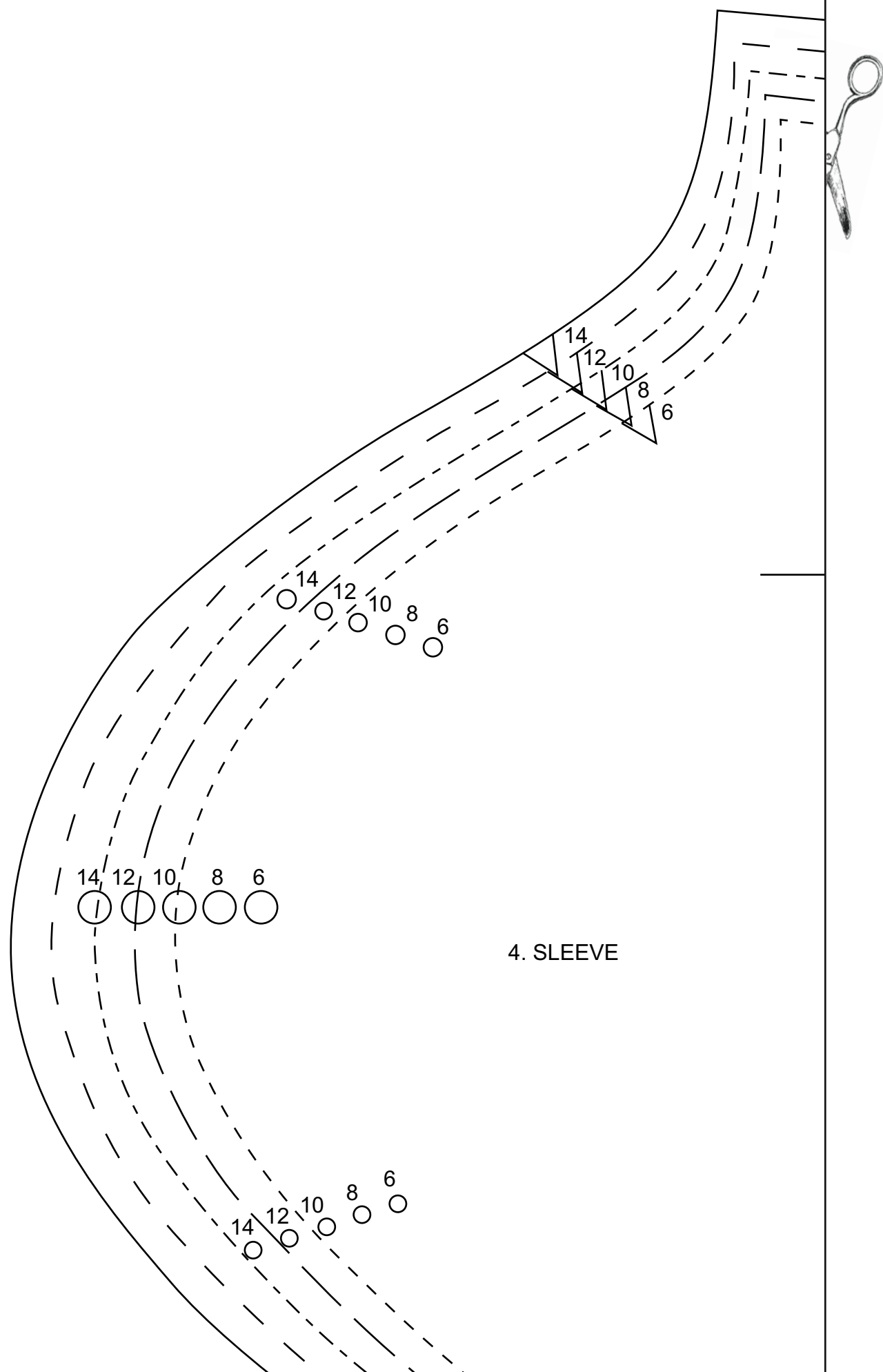
2



3



4



5

14
12
10
8
6

GRAINLINE

HEM 1 1/4" (3.2CM)

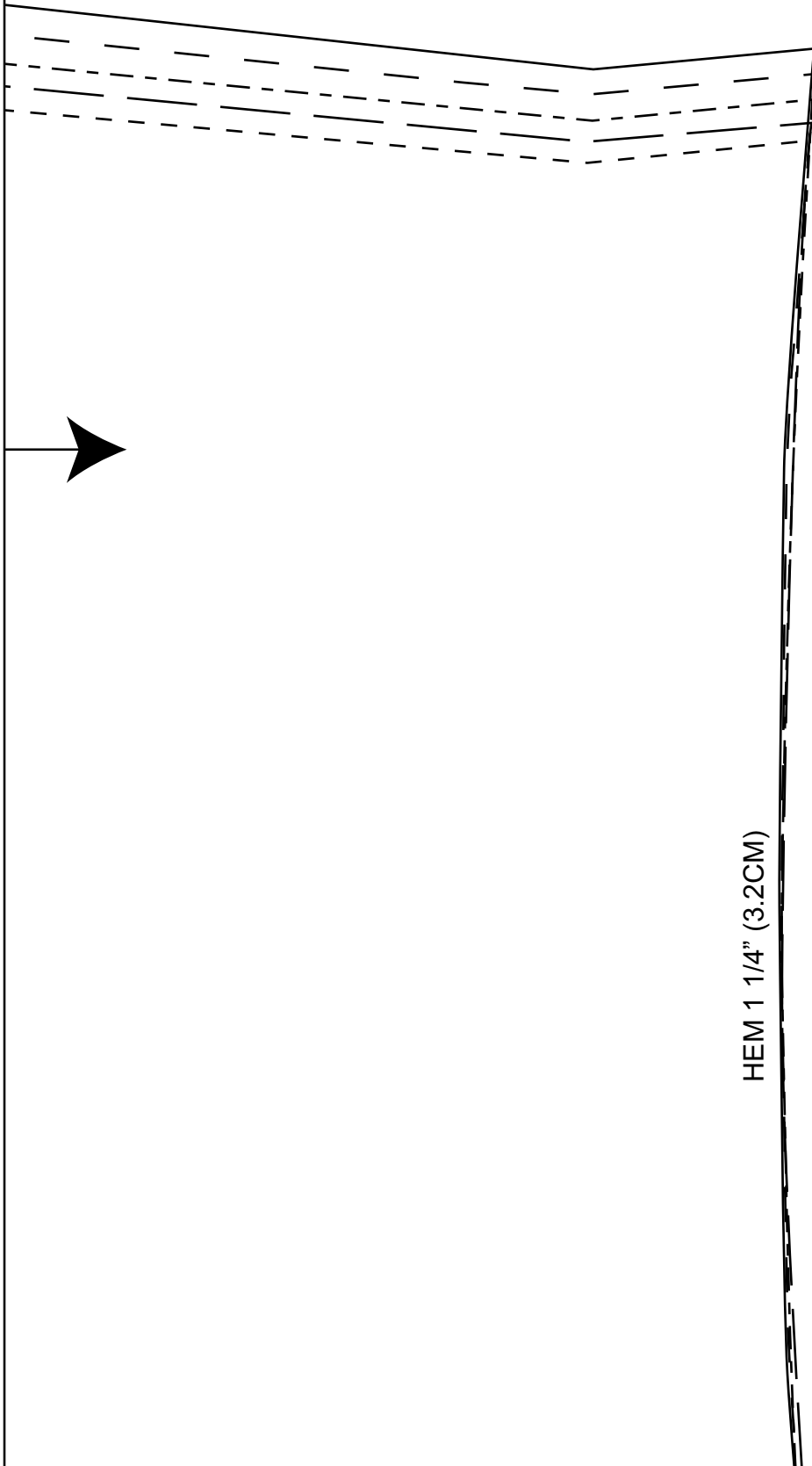


6



LENGTHEN OR SHORTEN HERE

7



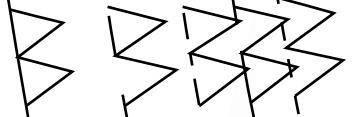
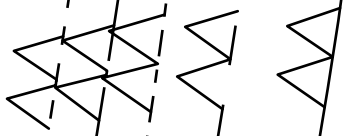
HEM 1 1/4" (3.2CM)



LENGTHEN OR SHORTEN HERE

WAISTLINE

9



14

12



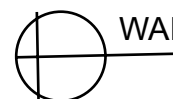
10



10 8 6

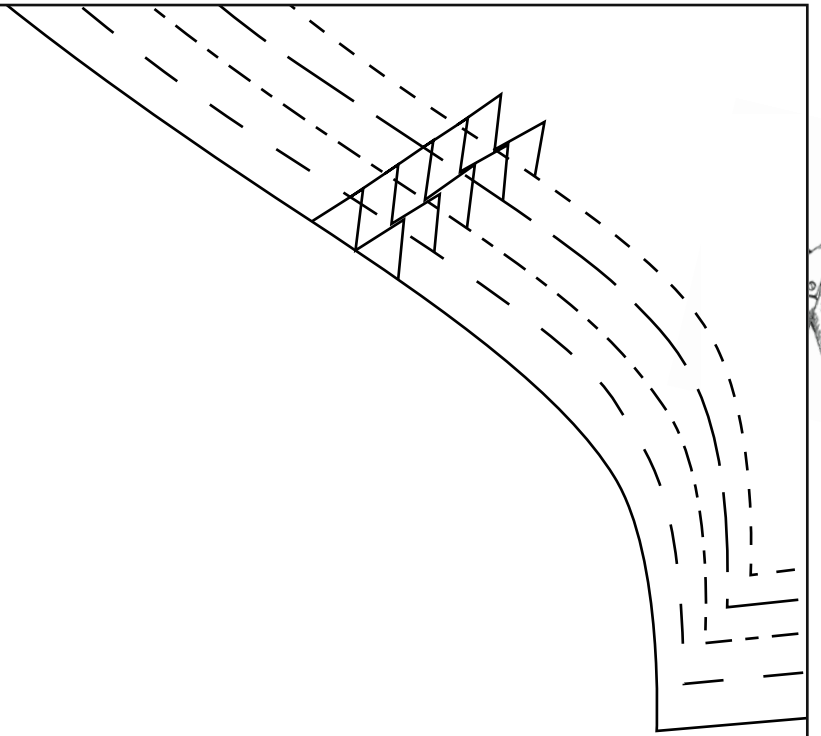
Three circles of decreasing size are arranged horizontally. The circles are positioned below the numbers 10, 8, and 6 respectively.

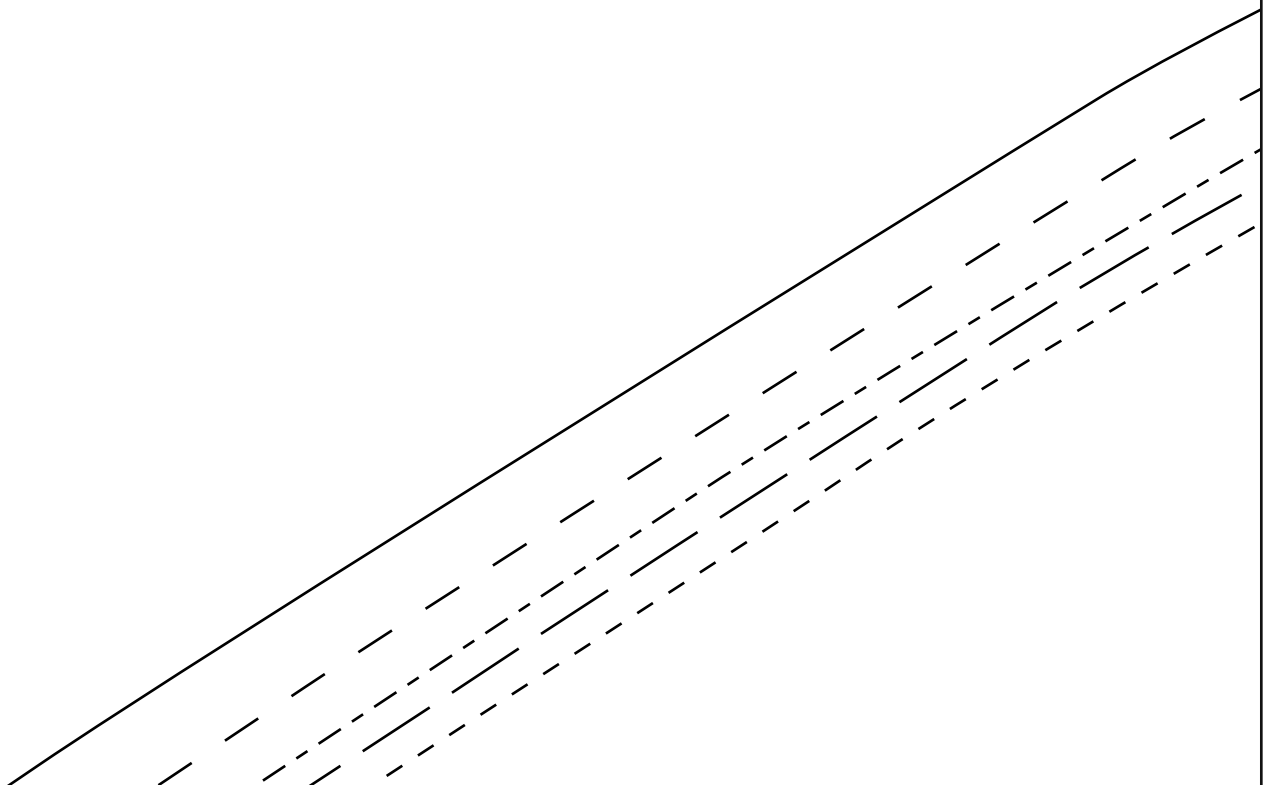
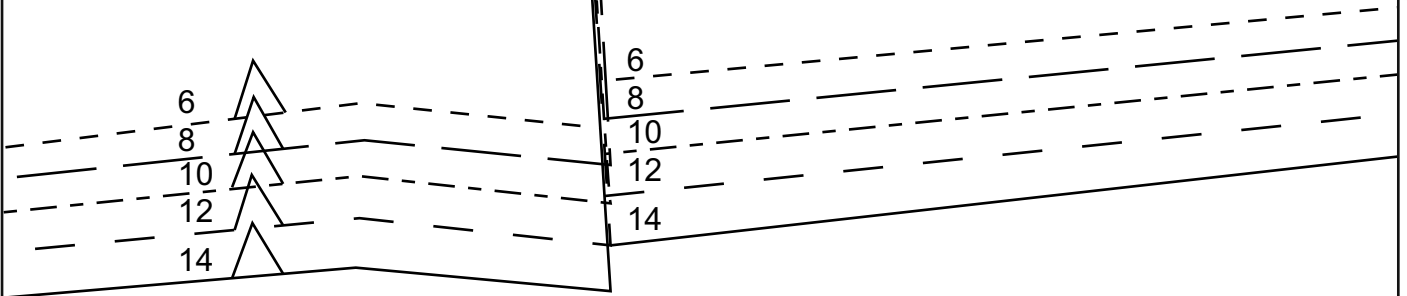
LENGTHEN OR SHORTEN HERE

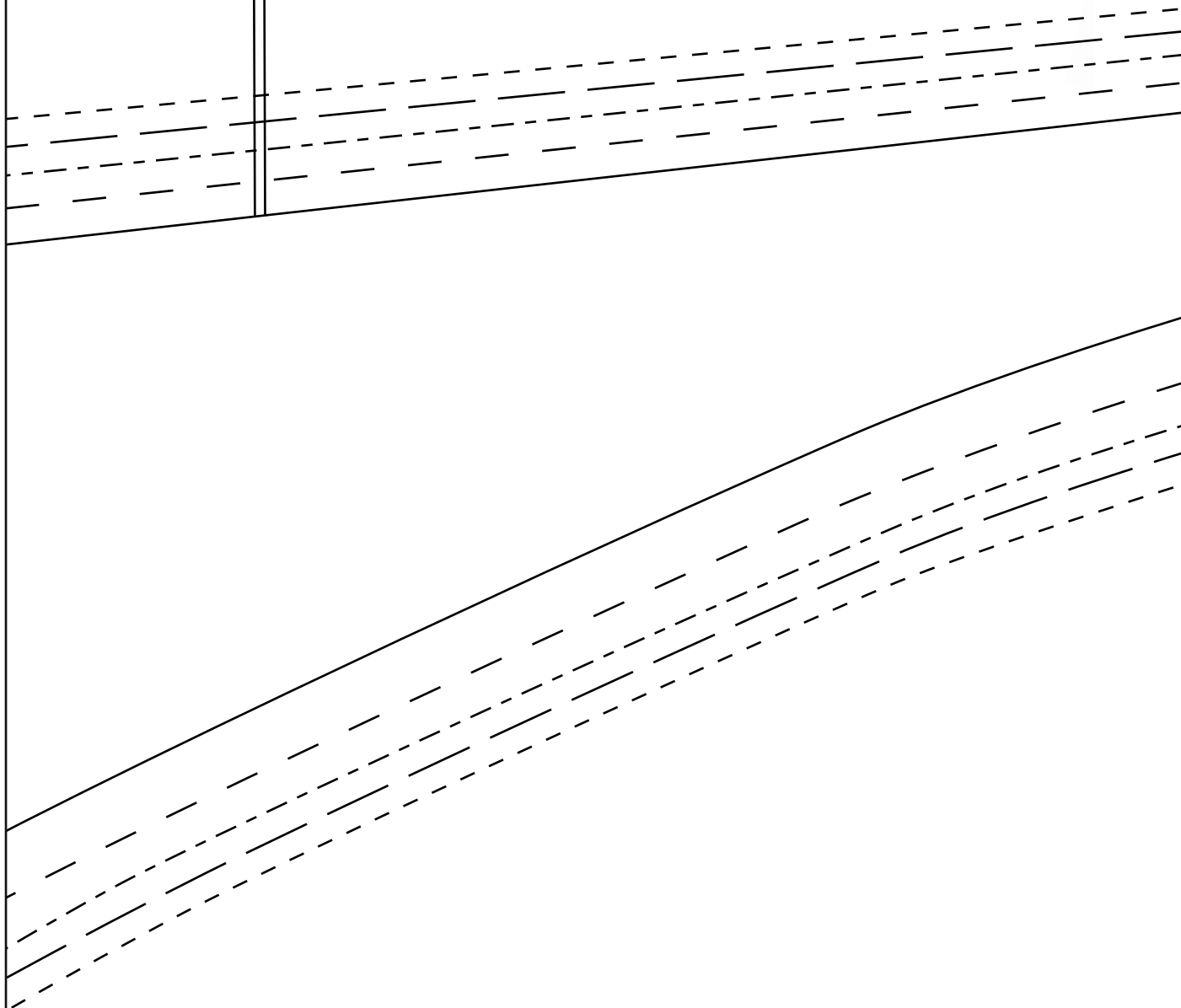


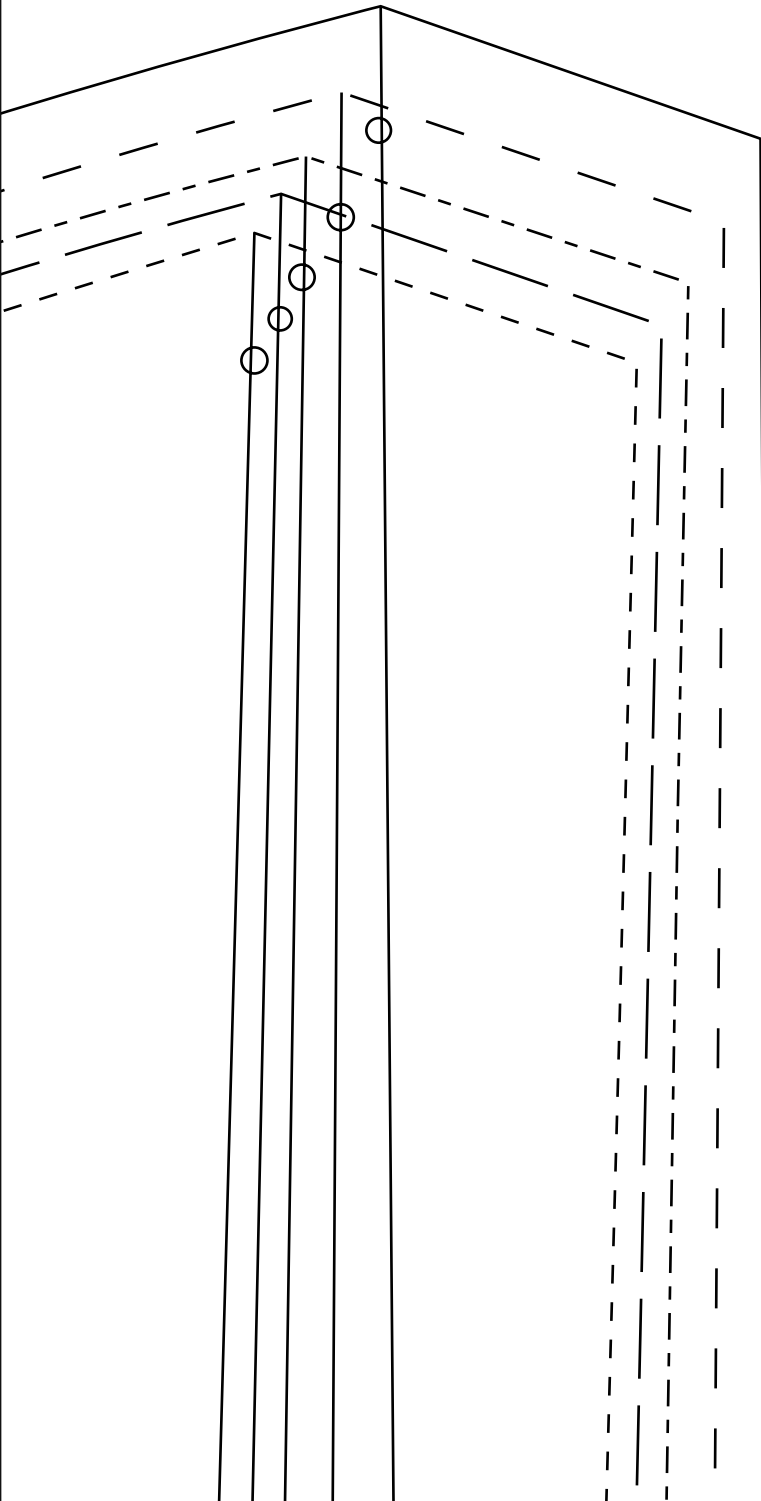
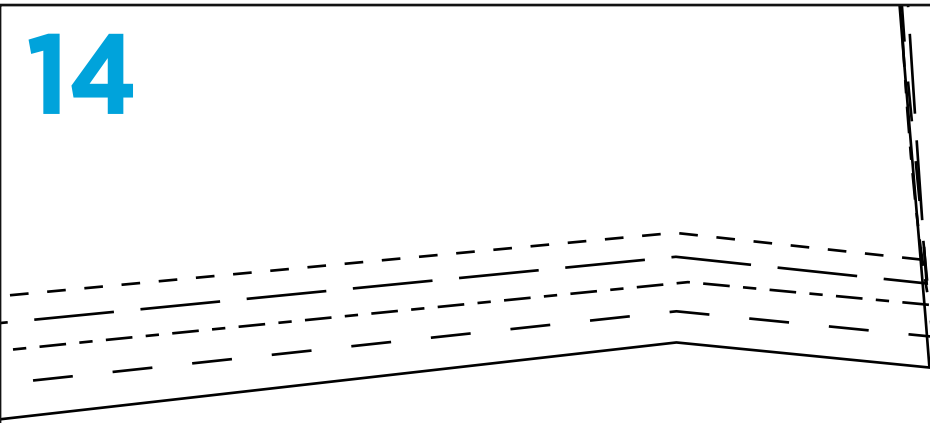
CENTER BACK ON FOLD

STLINE





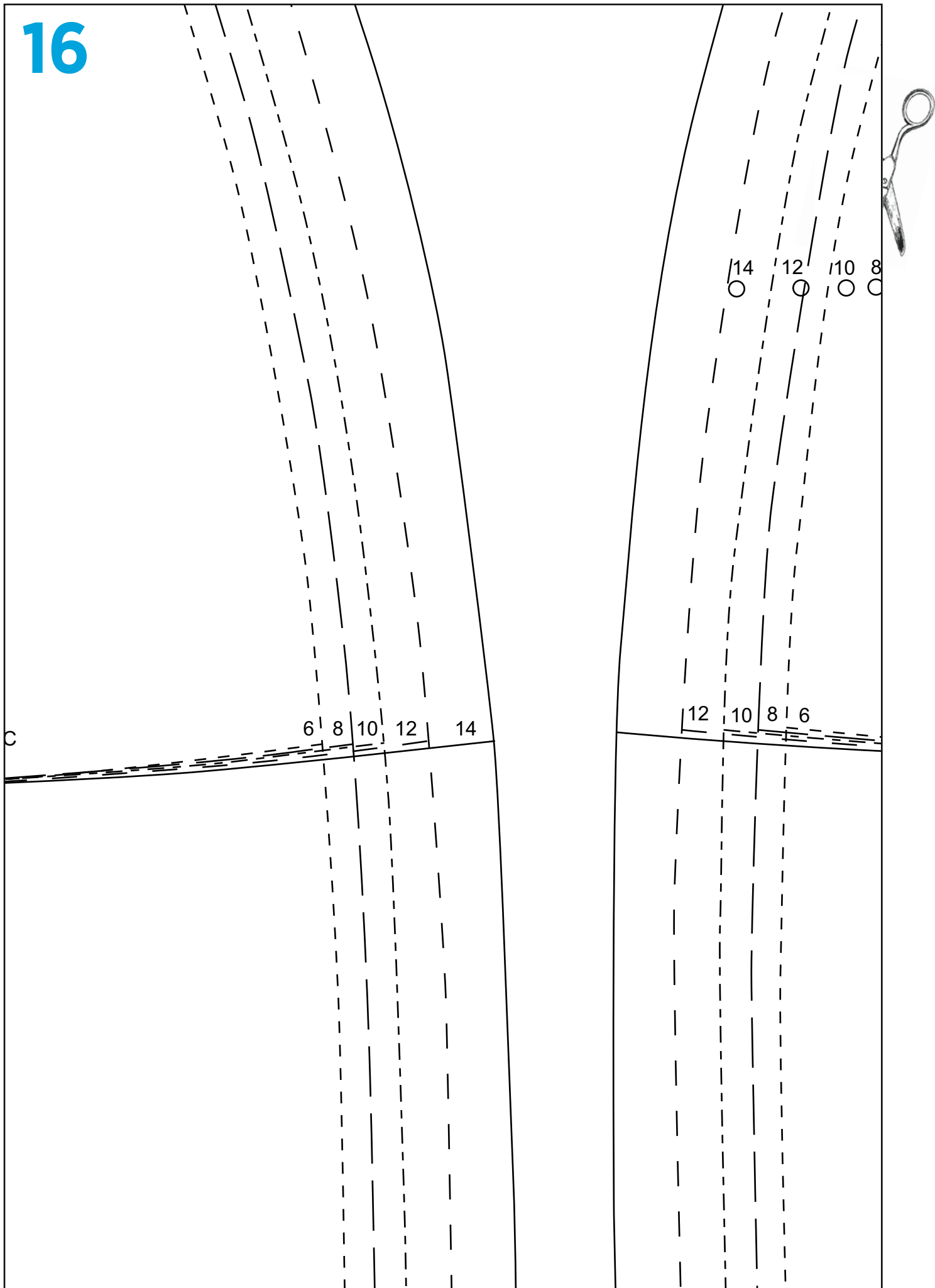






CUT HERE FOR A B

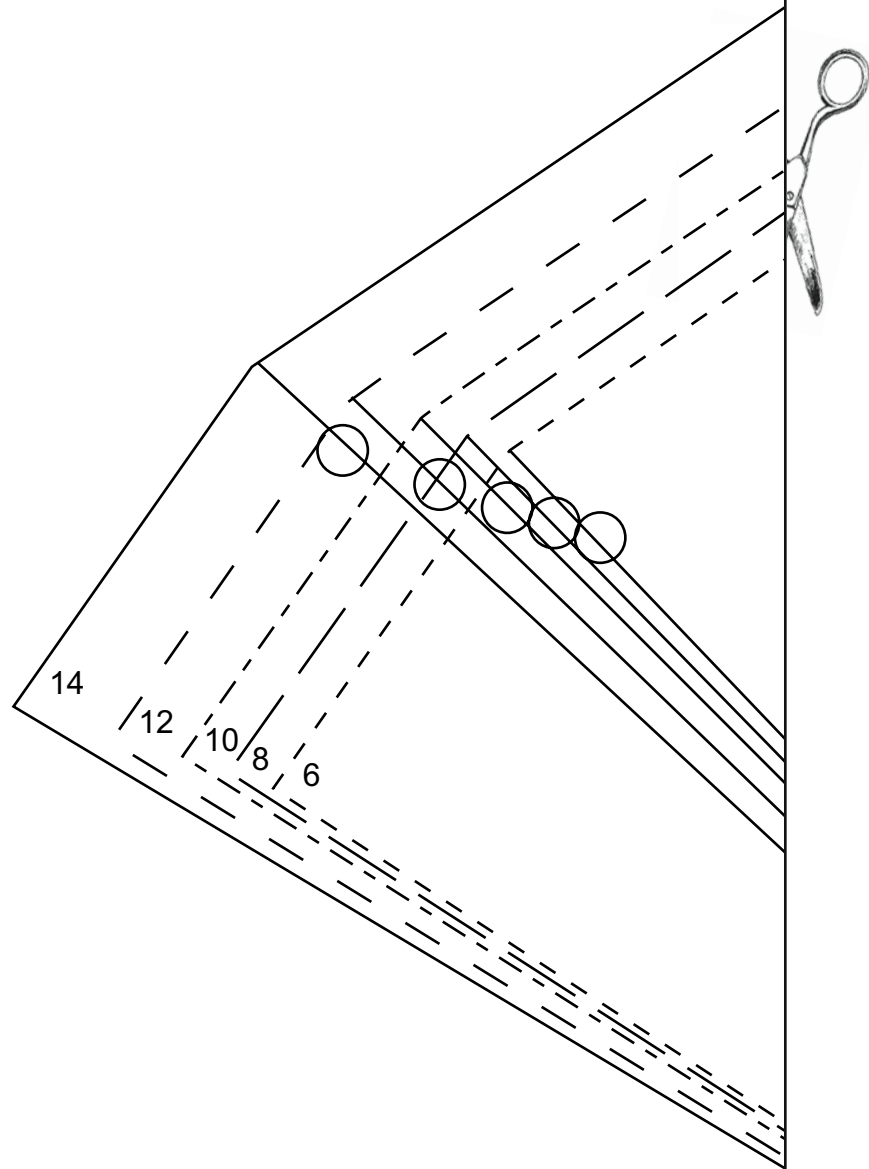
HEM 1 1/4" (3.2CM)

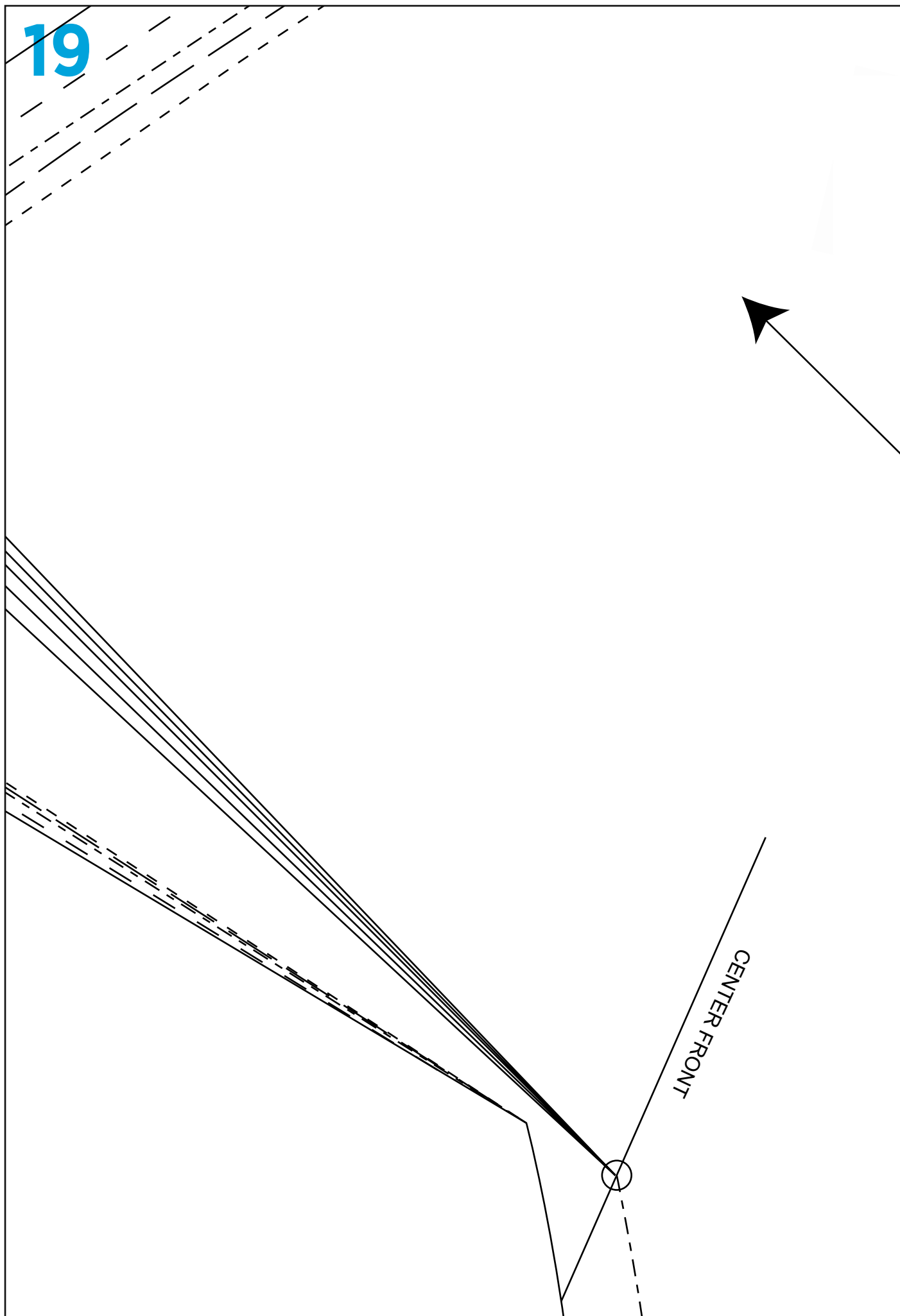




CUT HERE FOR A B C

HEM 1 1/4" (3.2CM)



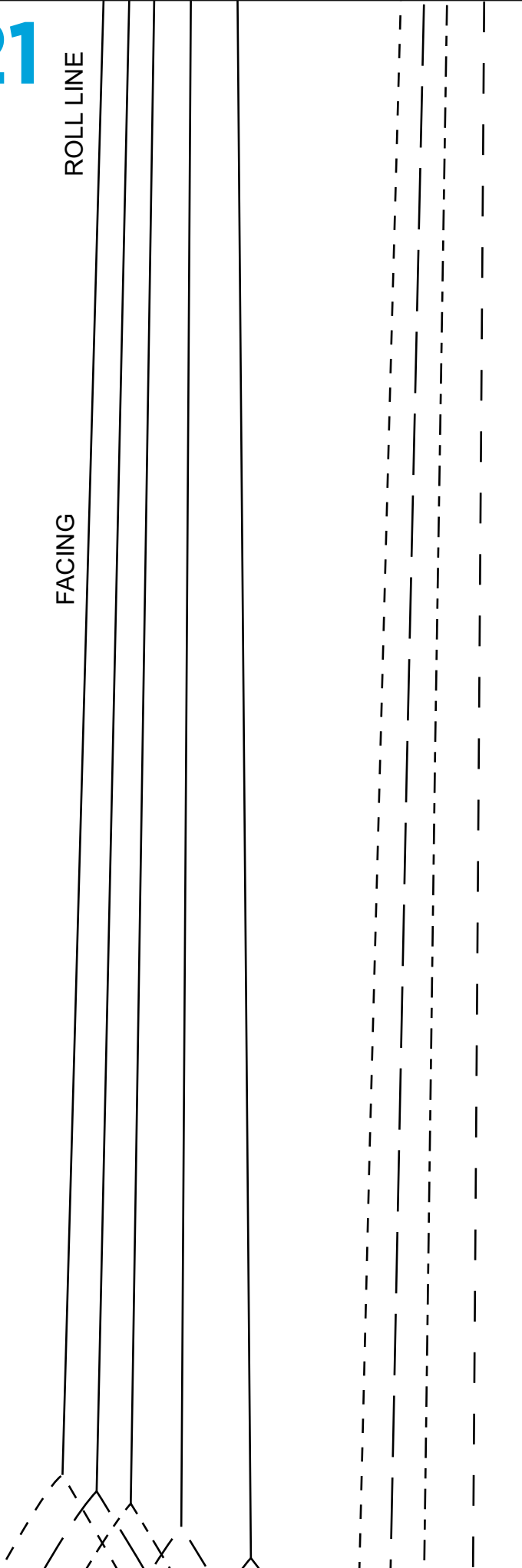




GRAINLINE

ROLL LINE

FACING





HEM 1 1/4" (3.2CM)

LENGTHEN

23



OR SHORTEN HERE



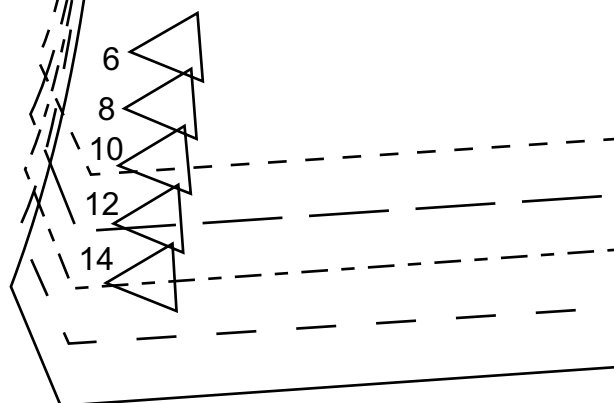
LENGTHEN OR SHORTEN HERE

HEM 1 1/4" (3.2CM)





1. FRONT OV



ERLAY

