

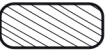

# Instructions for Katharine Wide-Legged Trousers #0003

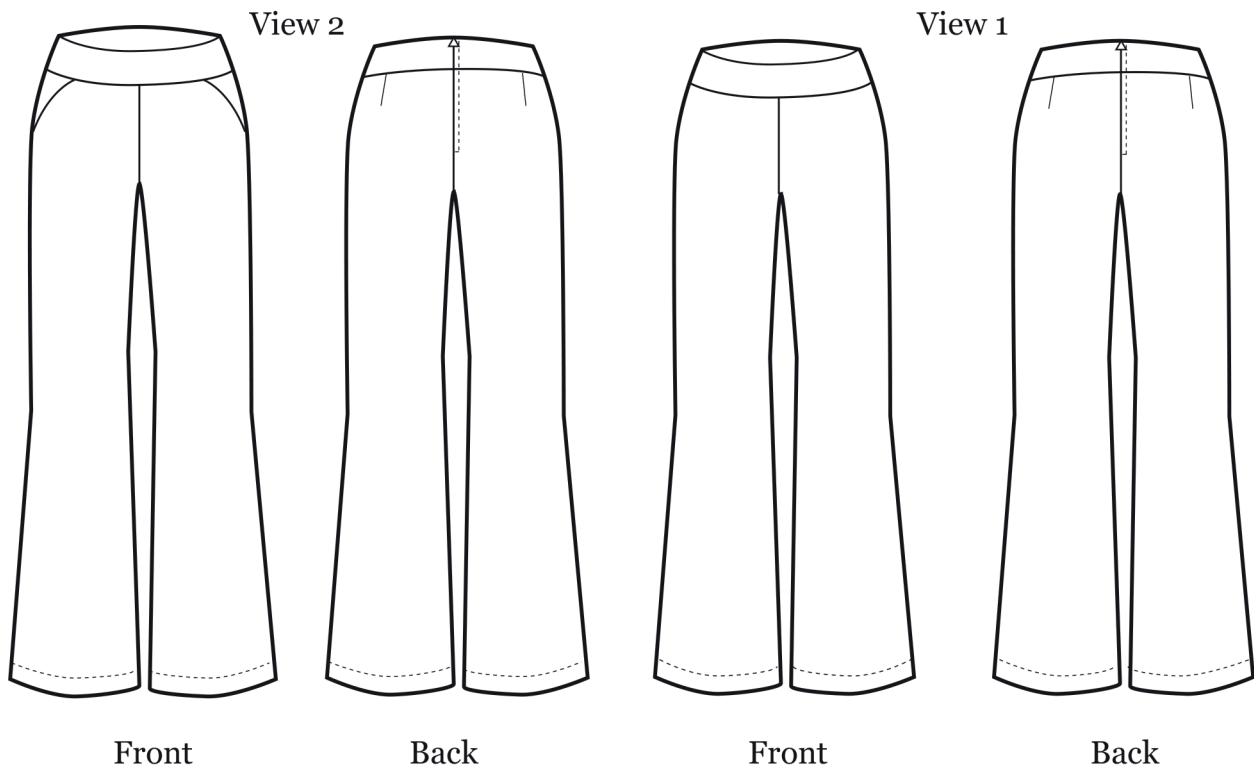


MADE IN THE UK



## Key

- Wrong Side 
- Right Side 
- Stitch Line - - - -
- RST=right sides of fabric together



*For View 2 follow the separate pocket instructions included and then follow View 1 instructions from stage 1.*

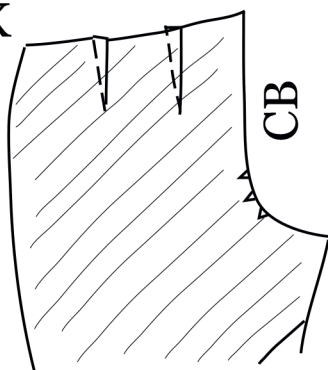
*All layplans are on the pocket instruction sheet.*

## Preparation

It is really important to launder your fabric (according to instructions) before you sew with it, this allows for shrinkage. On the pattern sheet there are labels you can cut out to pin onto your fabric pieces after you have cut them out to remind you which piece is which (handy if you cut out and leave to sew at a later date). It is also a good idea to make a muslin (toile) of your trousers so that you can tweak the fit to suit your body perfectly. When you have treated your final fabric and ironed it, you can cut out our your pattern pieces and overlock or zig zag the side seams and trouser hems ready to stitch together. You will also need to apply your iron-on interfacing (fusing) to ONE set of the waistband pieces. Happy sewing!

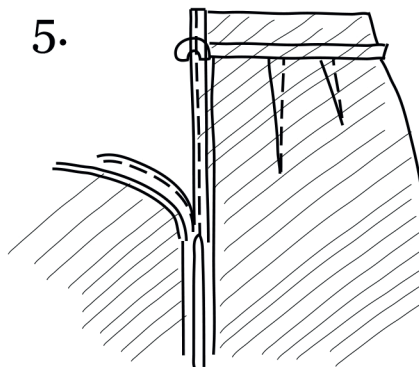
## BACK

1-2.



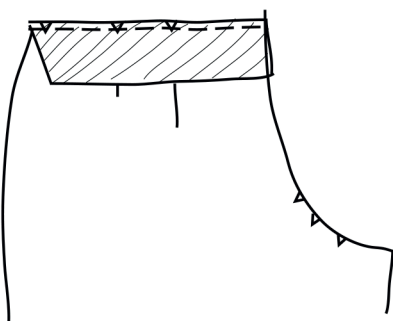
On the wrong side of back trouser pieces, pin darts and sew in place. At the end of the dart do NOT backstitch, simply tie the ends into a knot. This avoids bulkage. Press towards CB.

5.



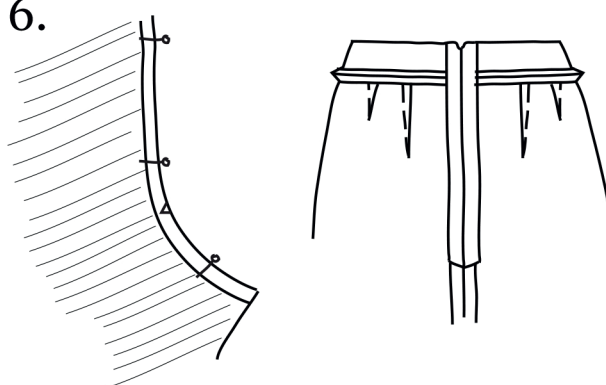
Change presser foot to concealed zipper foot – sew both sides of zip as far as it will go.

3.



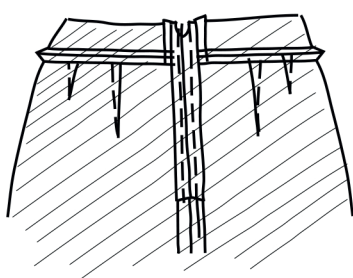
RST pin UNFUSED back waistband to trouser waist, matching notches. Sew 1cm seam. Press seams UP.

6.



At bottom of zip keep seams to the side. From last stitches sew 1cm CB seam to end of back crutch. Press seam open.

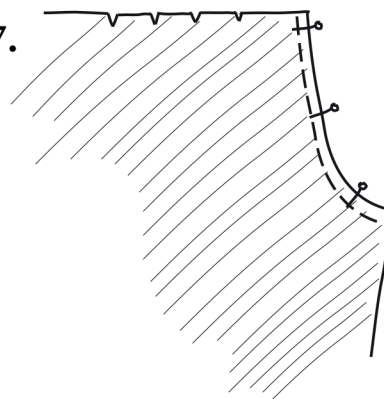
4.



Pin concealed zip in place at Centre Back - sew both sides of zip to keep in place.

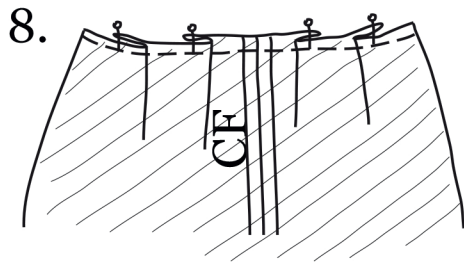
## FRONT

7.



FRONT- with RST pin together CF crutch seam. Sew 1cm seam. Press seam open.

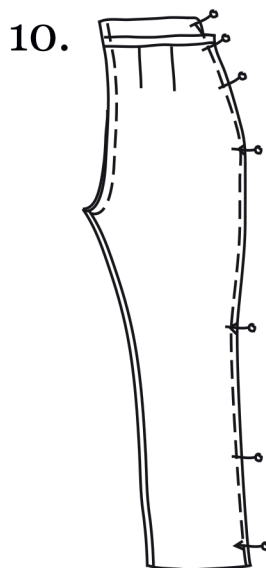




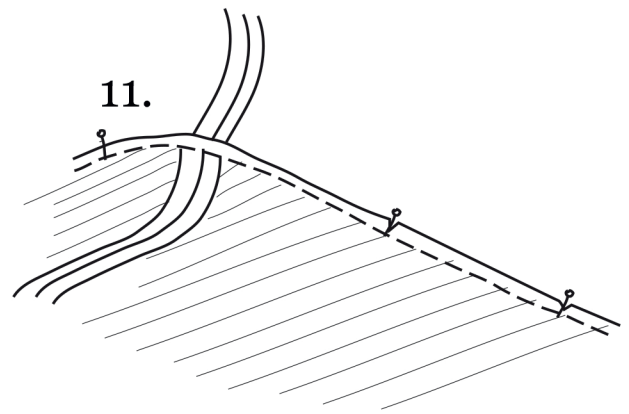
Matching notches, pin two pleats facing outwards, either side of CF. Sew across each pleat at waist to secure (baste stitch)



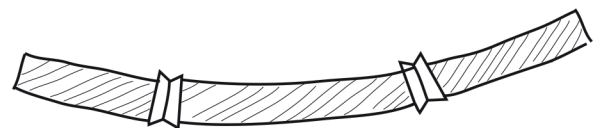
With RST pin UNFUSED front waistband to front trouser waist, matching notches. Sew 1cm seam. Press seam up.



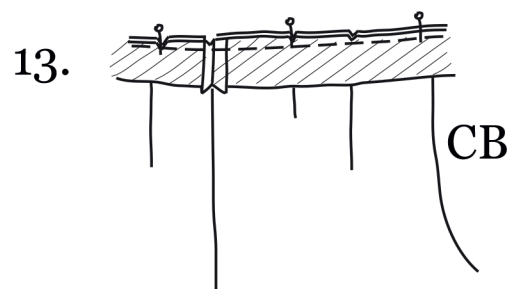
With RST pin back and front side seams together matching waist seams and notches. Sew 1cm seams. Press open.



With RST pin CF and CB crutch together and pin inside legs, matching crutch seam and notches. Sew 1 cm seam.



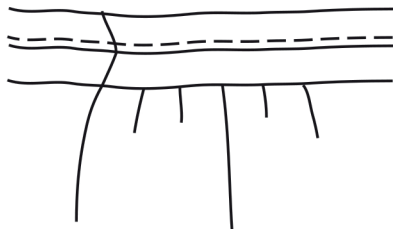
With RST pin side seams of fused back and front waistband. Sew 1cm seam. Press open.



With RST place and pin fused waistband to unfused waistband, matching side seams and notches. Sew 1cm seam.

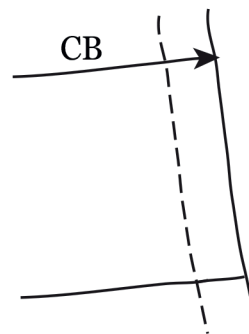


14.



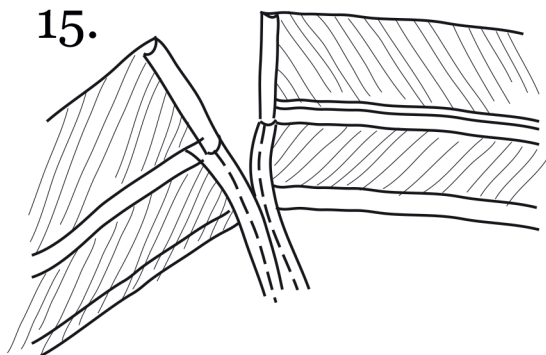
On RS, keeping waist seam toward fused waistband, edgestitch fused waistband seam edge approx 2mm from seam.

17.



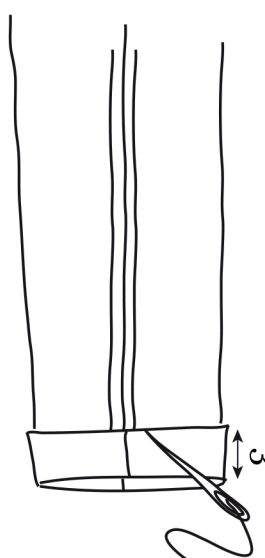
On RS sink stitch (stitch in ditch) waistband at waist seam.

15.



On WS fold in either side of fused waistband 1cm.

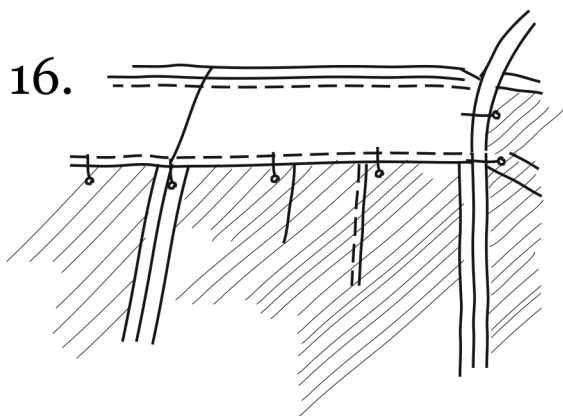
18.



Turn up hems 3cm. Pin and hand sew in place, or blind hem stitch using blind hem footer.

Finally give your trousers a good all over press. Finish!




16.



Fold on waist seam edge and pin fused waistband ends to side of zip. Fold and pin the rest of the waistband matching seams. Baste stitch in place.



## Key

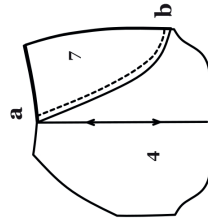
-  Wrong Side
-  Right Side
-  Stitch Line
- RST=right sides of fabric together

### POCKET VERSION 2

Complete this stage then follow Non pocket version (version 1) construction from step 1.

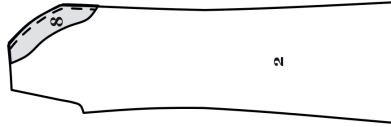
**First of all you must overlock or zig stitch the raw edges (bottoms and side edges) of the pocket facings and the pocket bag.**

1.



Stay stitch (these are larger stitches) piece 7 to the pocket bag piece 4, stitch all the way around from a to b and then using an ordinary size stitch, sew the facing piece to the pocket bag where shown around the bottom curve.

2.



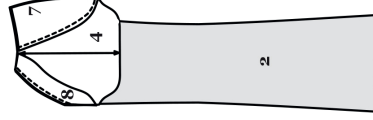
Stay stitch where shown piece 8 to piece 2 on the front pocket all the way around from a to b.

3.



RST place the pocket bag onto piece 2 sandwiching piece 8 between. Stitch through the three layers where marked.

4.



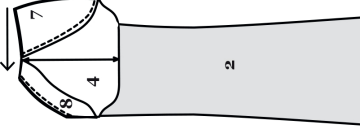
Flip pocket bag over folding the facing back as you go as well. You will have the facing Piece 8, showing its right side now. Press.

5.



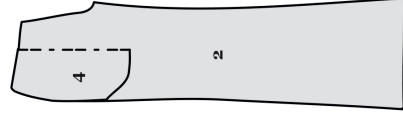
Top stitch along top of pocket curve. Use a small stitch close to the edge of the pocket.

6. Fold Pocket bag over in half



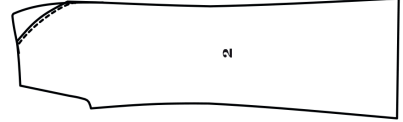
Now, turn the trousers so they are wrong side out and fold the pocket bag in half.

7.



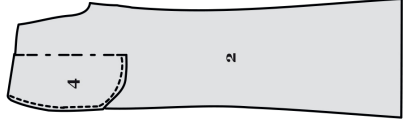
This is how the pocket bag should now look from the inside.

8.



This is how the trouser should now look from the outside.

9.



Press the pocket bag so it is neatly shaped and lying flat to the trouser. Stitch together along the free curve to create enclosure. Press.

**Repeat for other pocket and continue with step 1 of Version 1 instructions!**

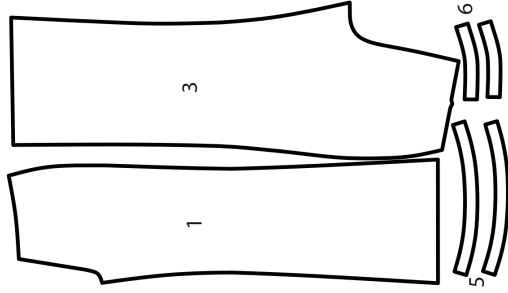
MY NOTES

MADE IN THE UK

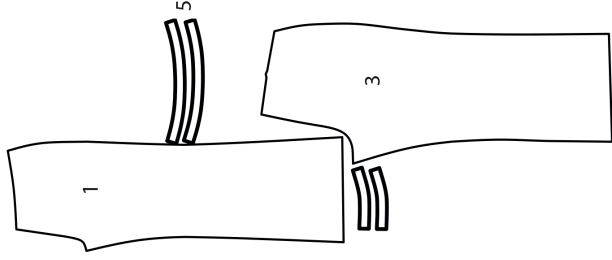


## Version 1 60" Wide Fabric

Sizes 8-12

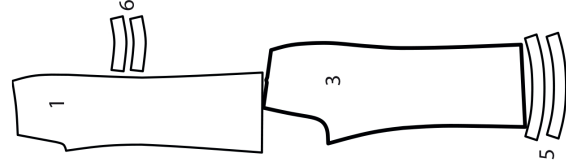


Sizes 14-18

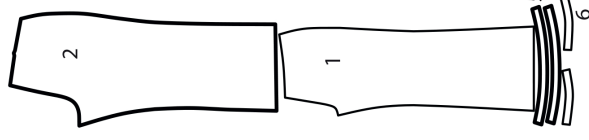


## Version 1 45" Wide Fabric

Sizes 8-12

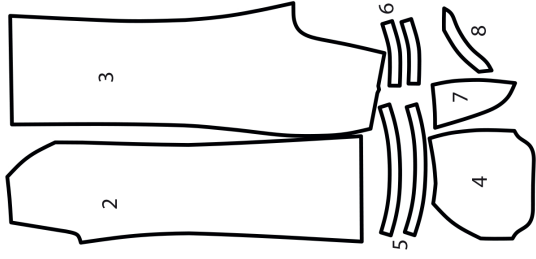


Sizes 14-18

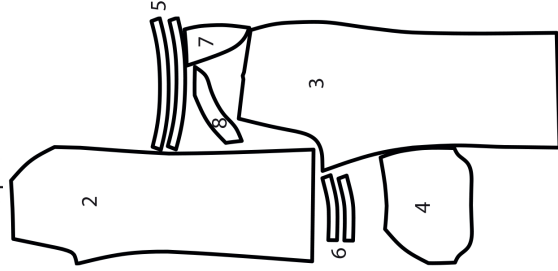


## Version 2 60" Wide Fabric

Sizes 8-12

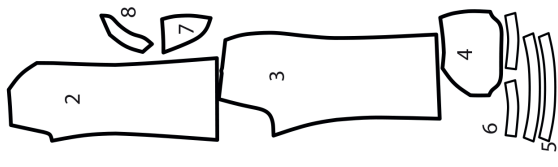


Sizes 14-18

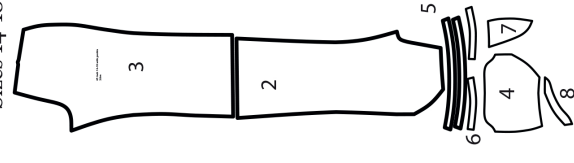


## Version 2 45" Wide Fabric

Sizes 8-12



Sizes 14-18



### KEY

- 1 = V1 Front Leg
- 2 = V2 Front Leg
- 3 = All Views Back Leg
- 4 = V2 Pocket Bag
- 5 = All Views Front Waistband
- 6 = All Views Back Waistband
- 7 = V2 Pocket Facing A
- 8 = V2 Pocket Facing B