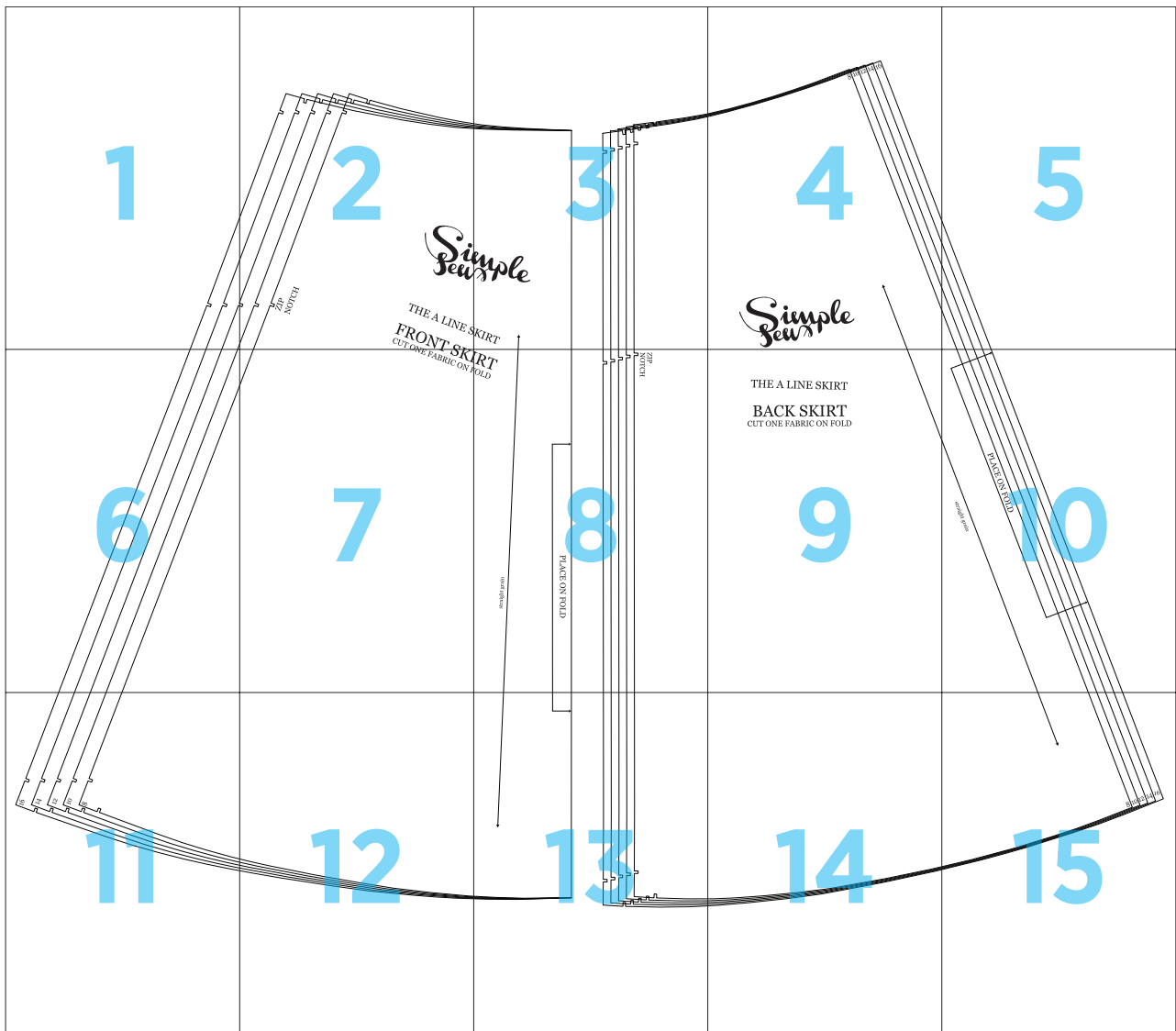
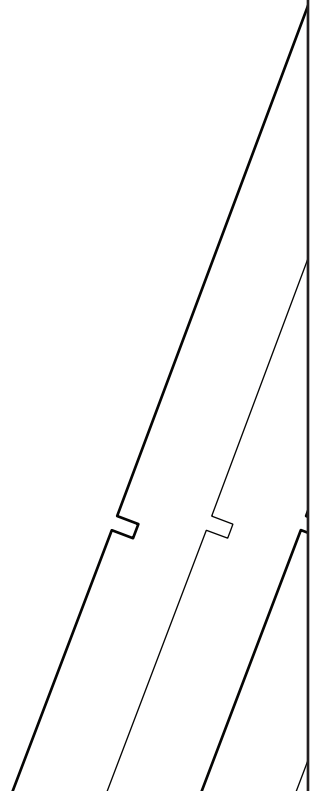


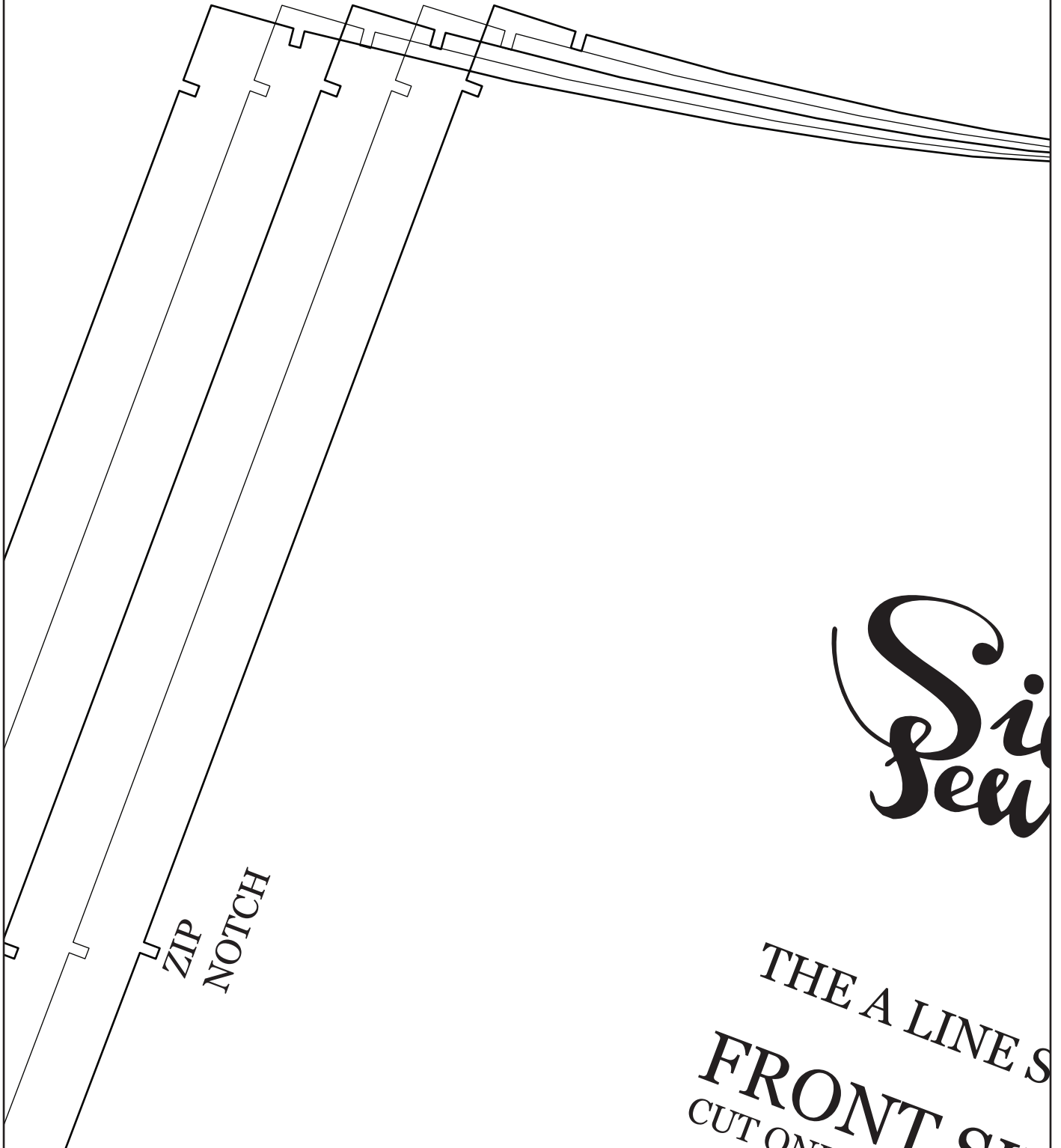
# Tartan Skirt



1



2



ZIP  
NOTCH

*Sis  
Sew*

THE A LINE S  
FRONT CUT ON

3



4

SK  
NE FABRIC ON F



RT  
FOLD

straight grain

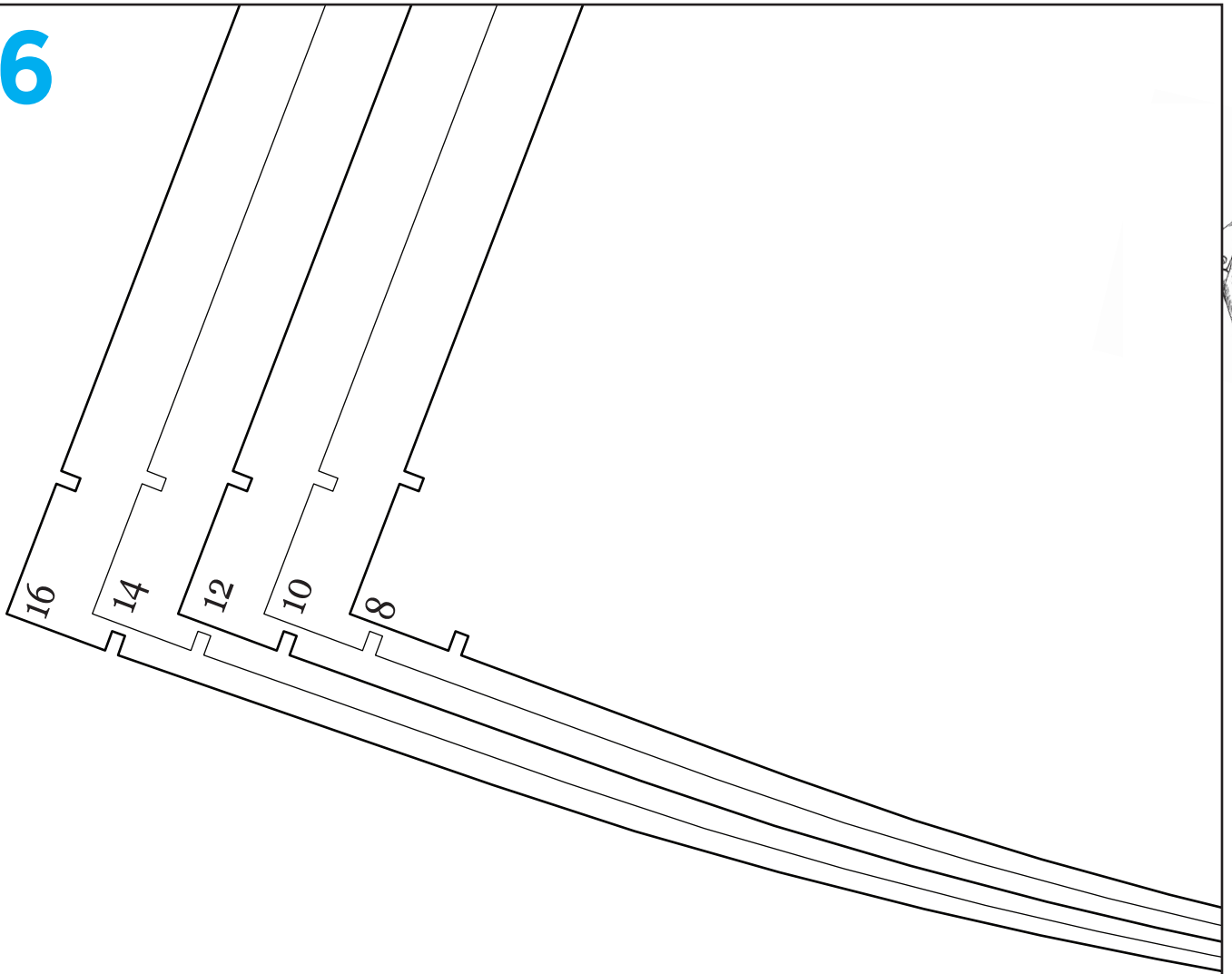
PLACE ON FOLD

ZIP  
NOTCH

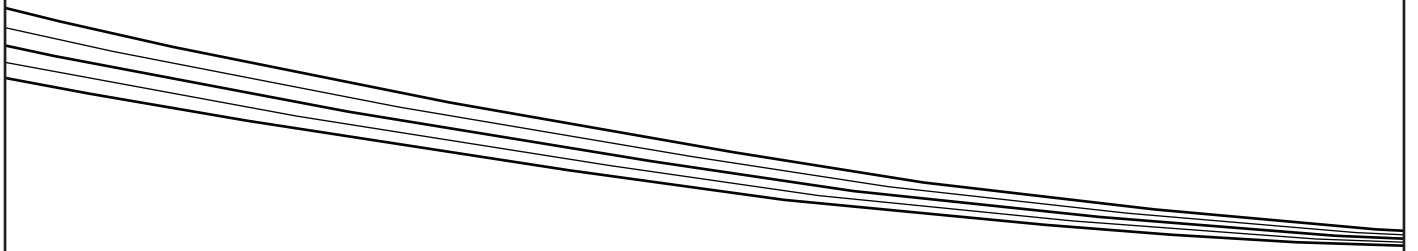
5



6

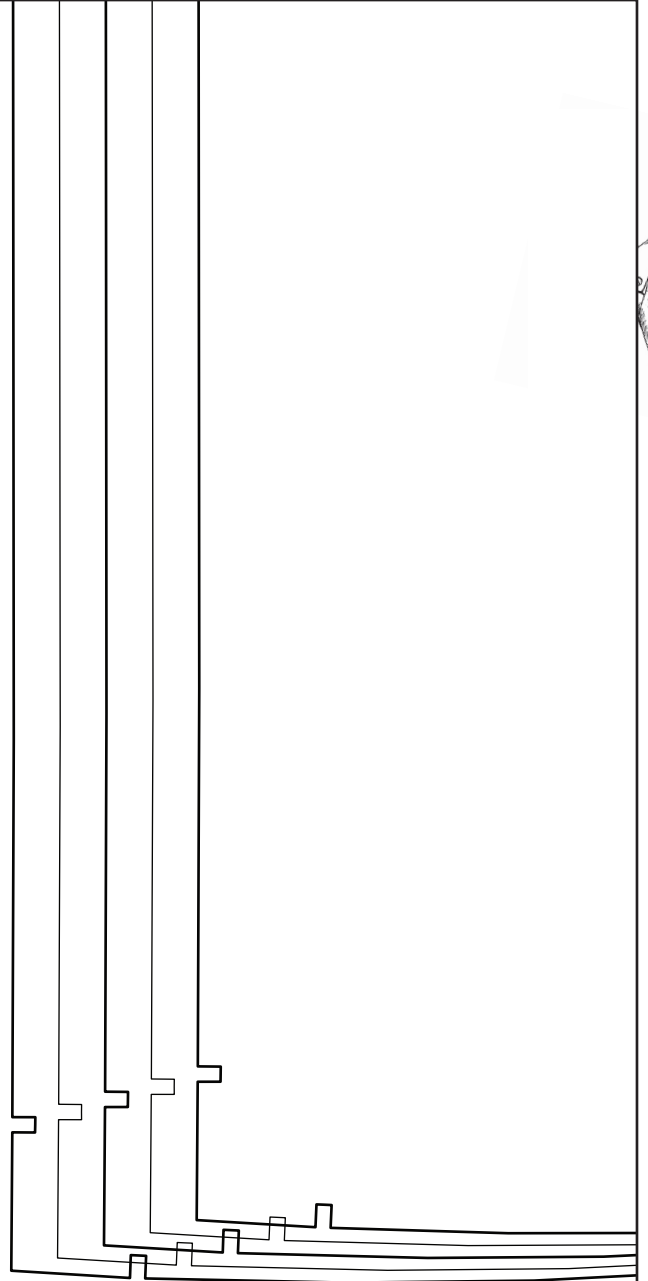
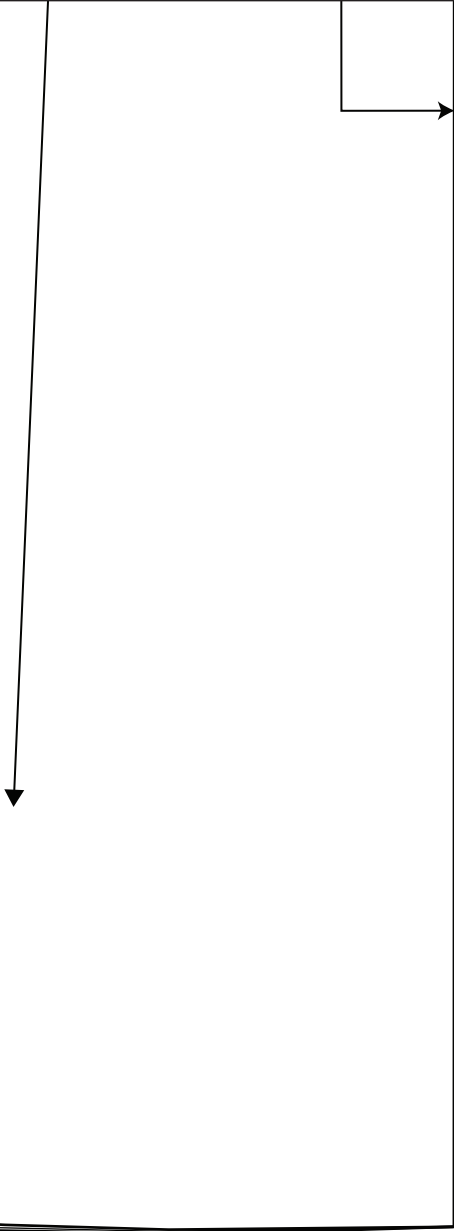


7

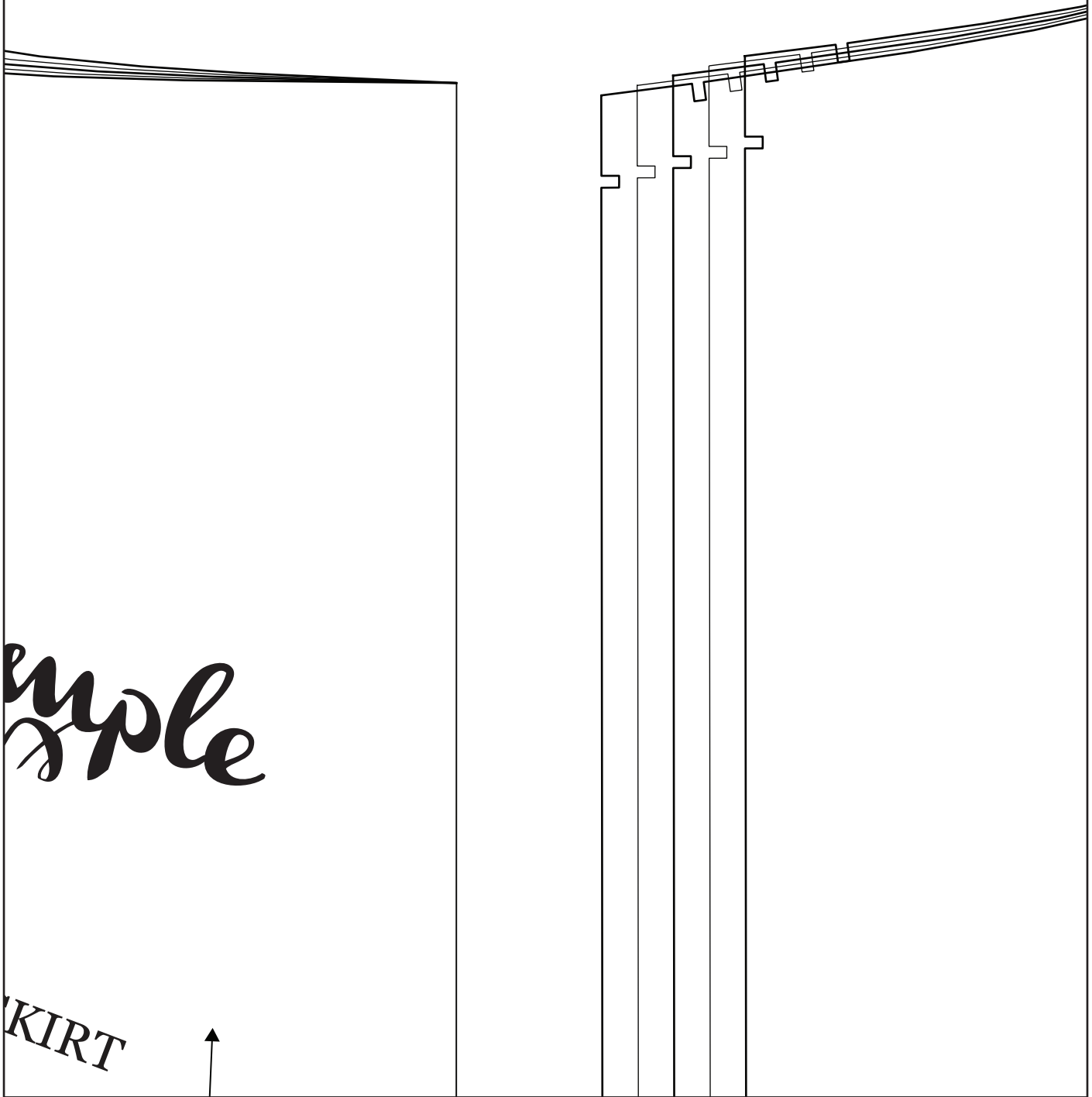




8



9

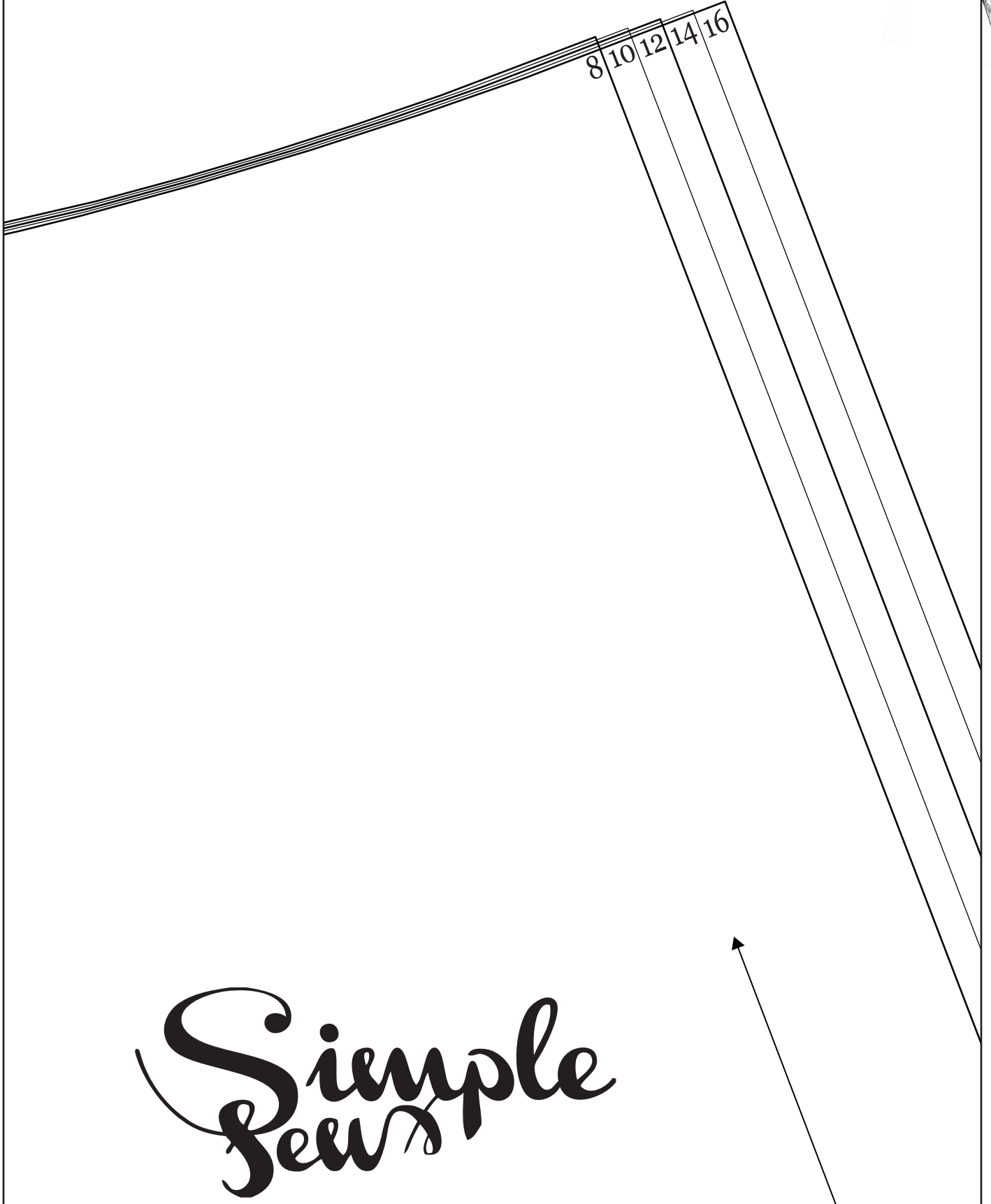


*uple*

KIRT



10



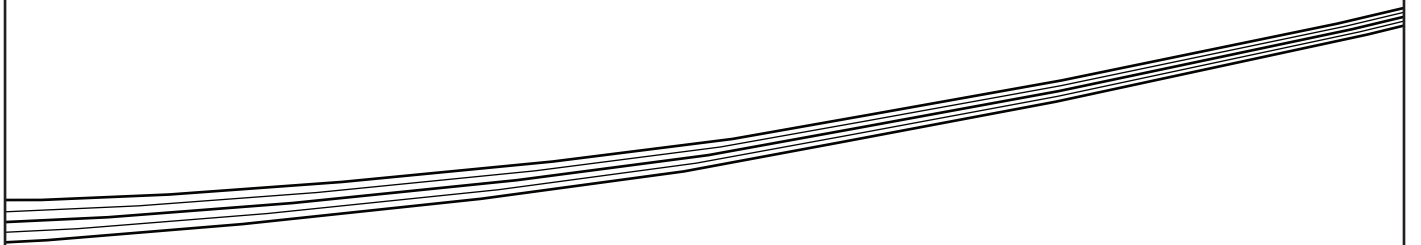
Simple  
sews

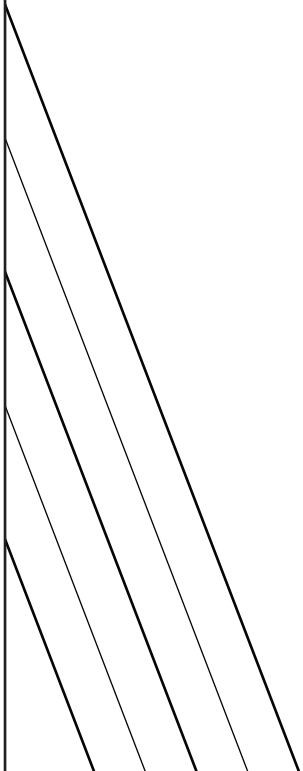
11

THE A LINE SKIRT

**BACK SKIRT**  
CUT ONE FABRIC ON FOLD







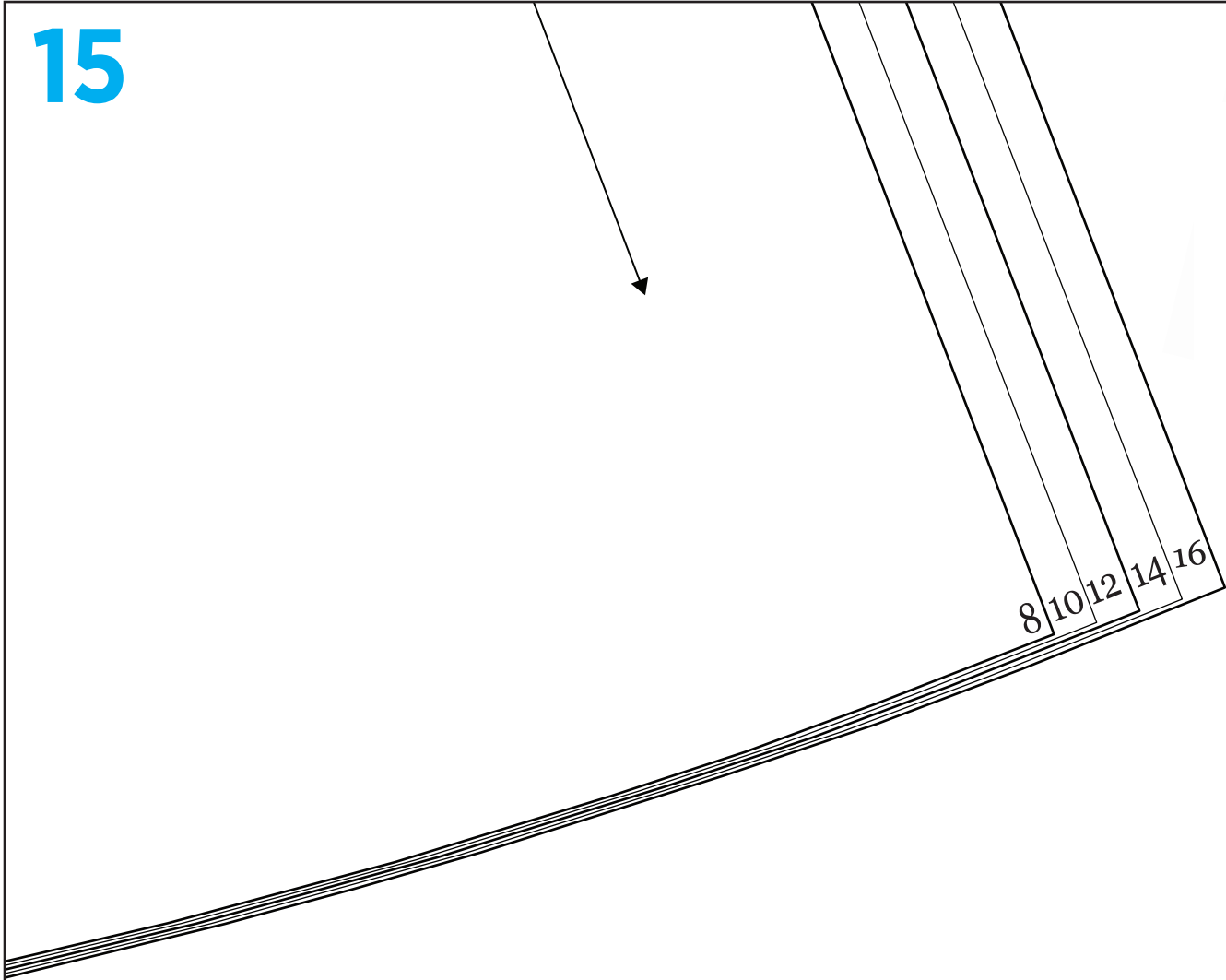
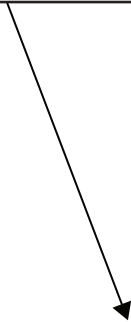
14

PLACE ON FOLD

straight grain



15



8 10 12 14 16

