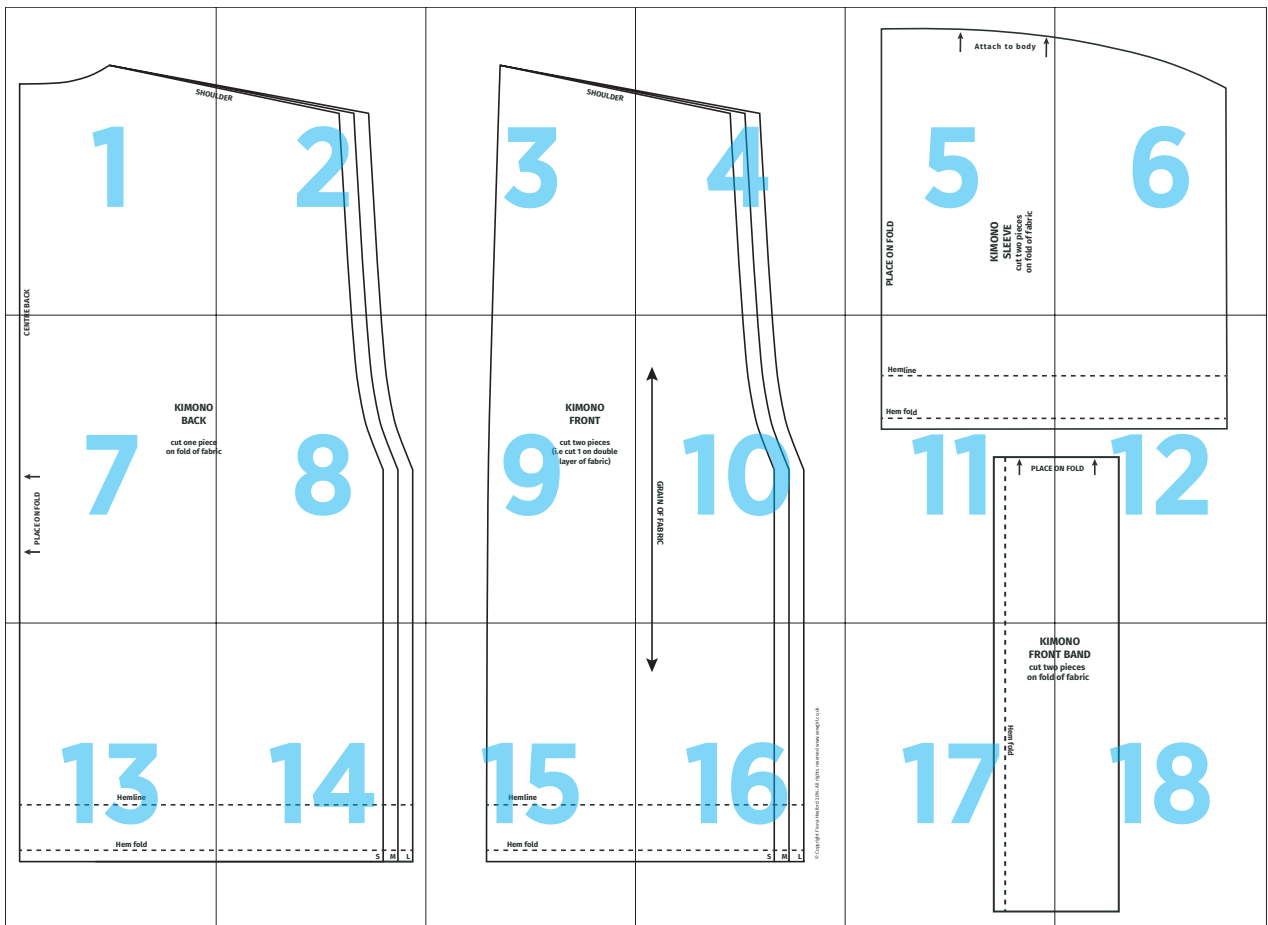


# Easy Kimono Jacket



1



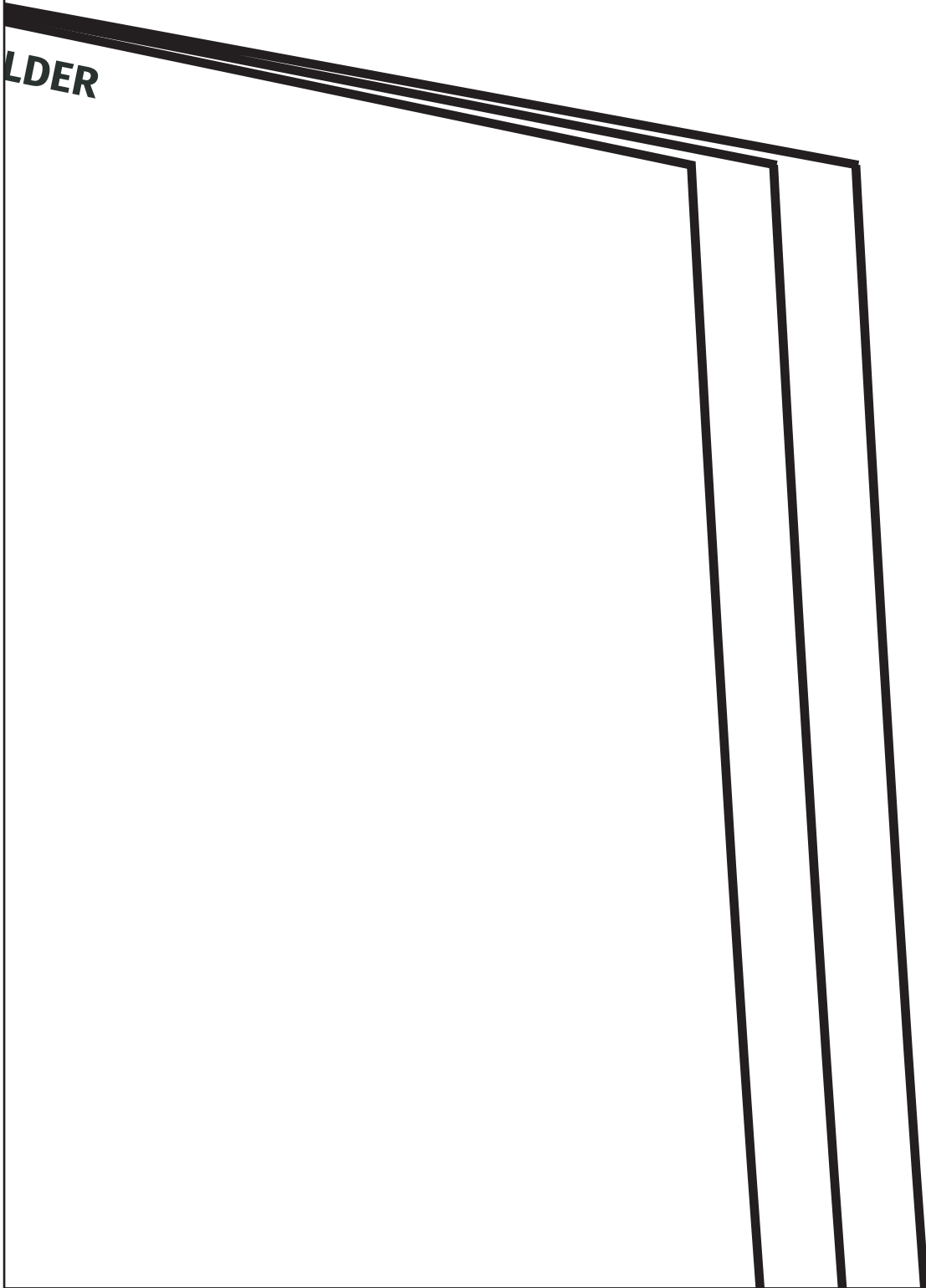
RE BACK

SHOU

2



LDER

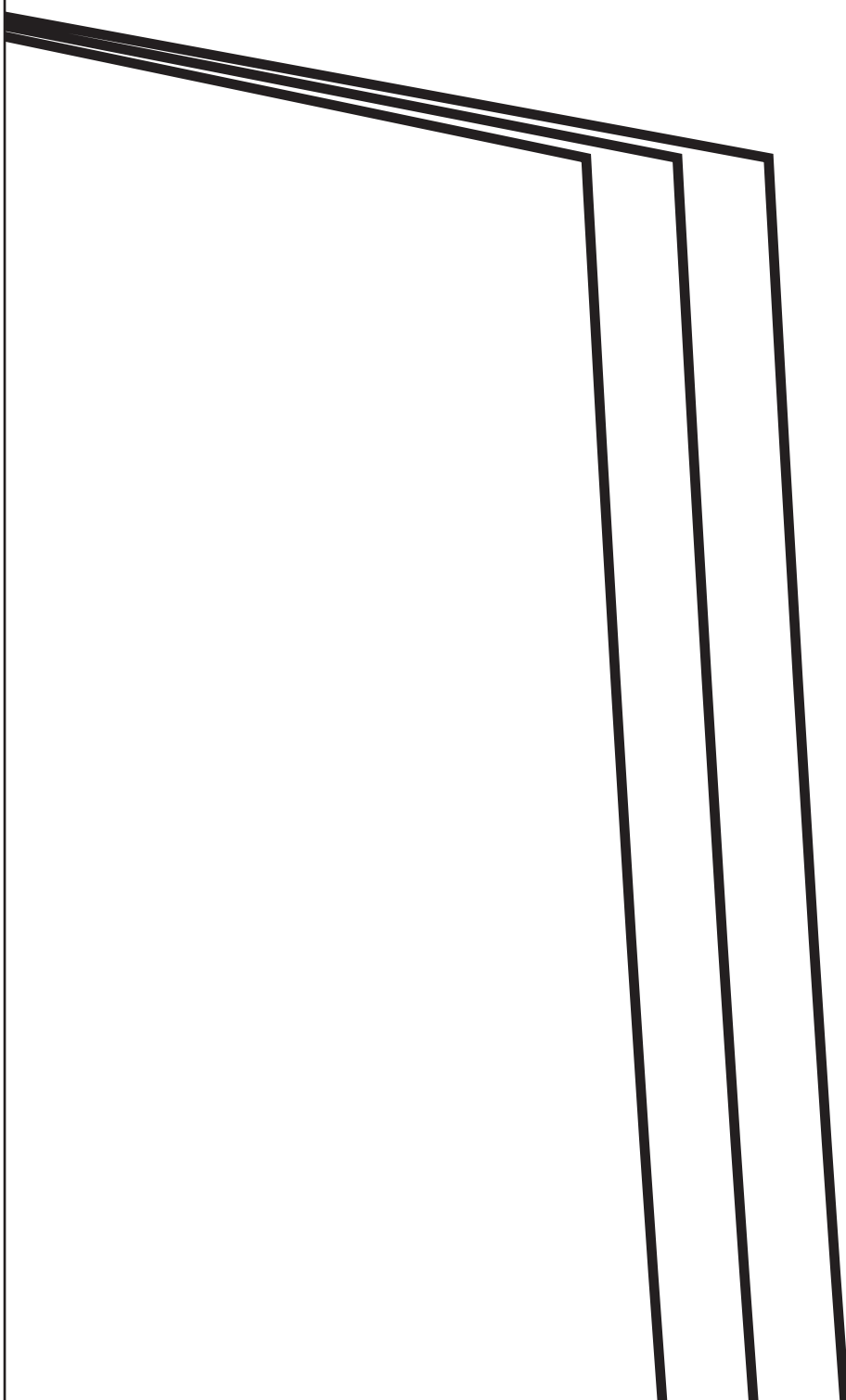


3



**SHOULDER**

4



**5**

**PLACE ON FOLD**

**KIMONO  
SLEEVE**  
cut two pieces  
on fold of fabric



**Attach to body**





# KIMONO BACK

cut one piece  
on fold of fabr

CENTR



PLACE ON FOLD





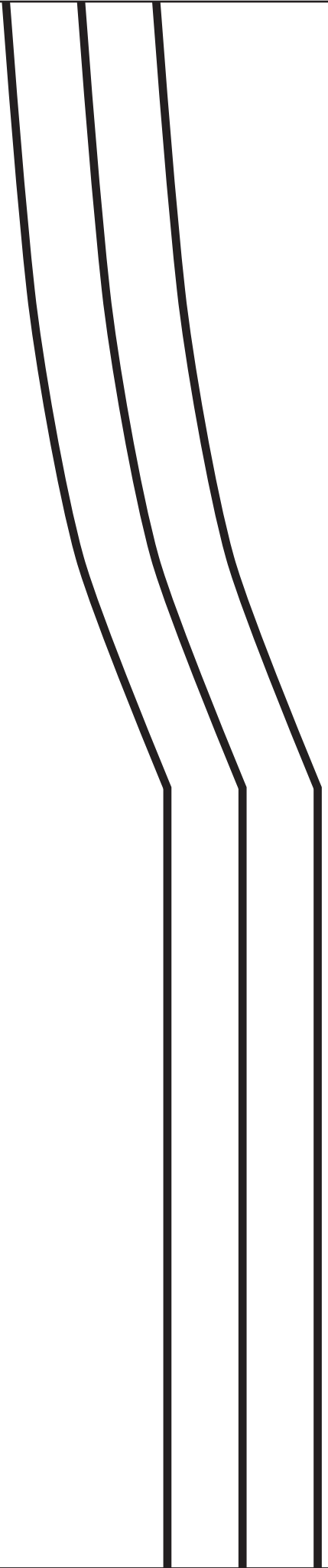
**Hemline**



**Hem fold**







9



S

M

L

10



## **KIMONO FRONT**

**cut two pieces  
(i.e cut 1 on double  
layer of fabric)**

11



**GRAIN OF FABRIC**



12

Hemline



Hem fold



PLACE C



13



**Hemline**

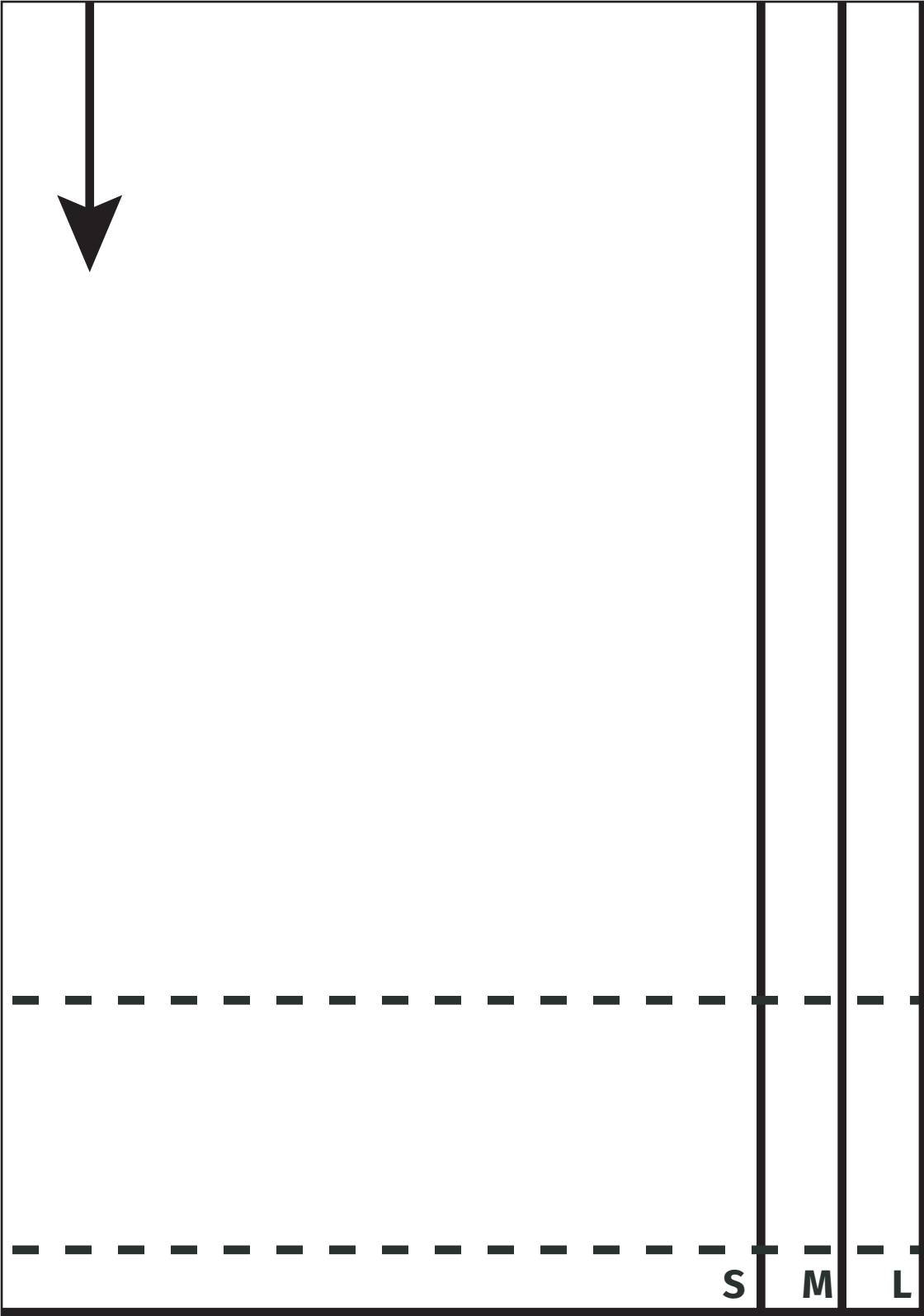


**Hem fold**





© Copyright Fiona Hesford 2014. All rights reserved [www.sewgirl.co.uk](http://www.sewgirl.co.uk)



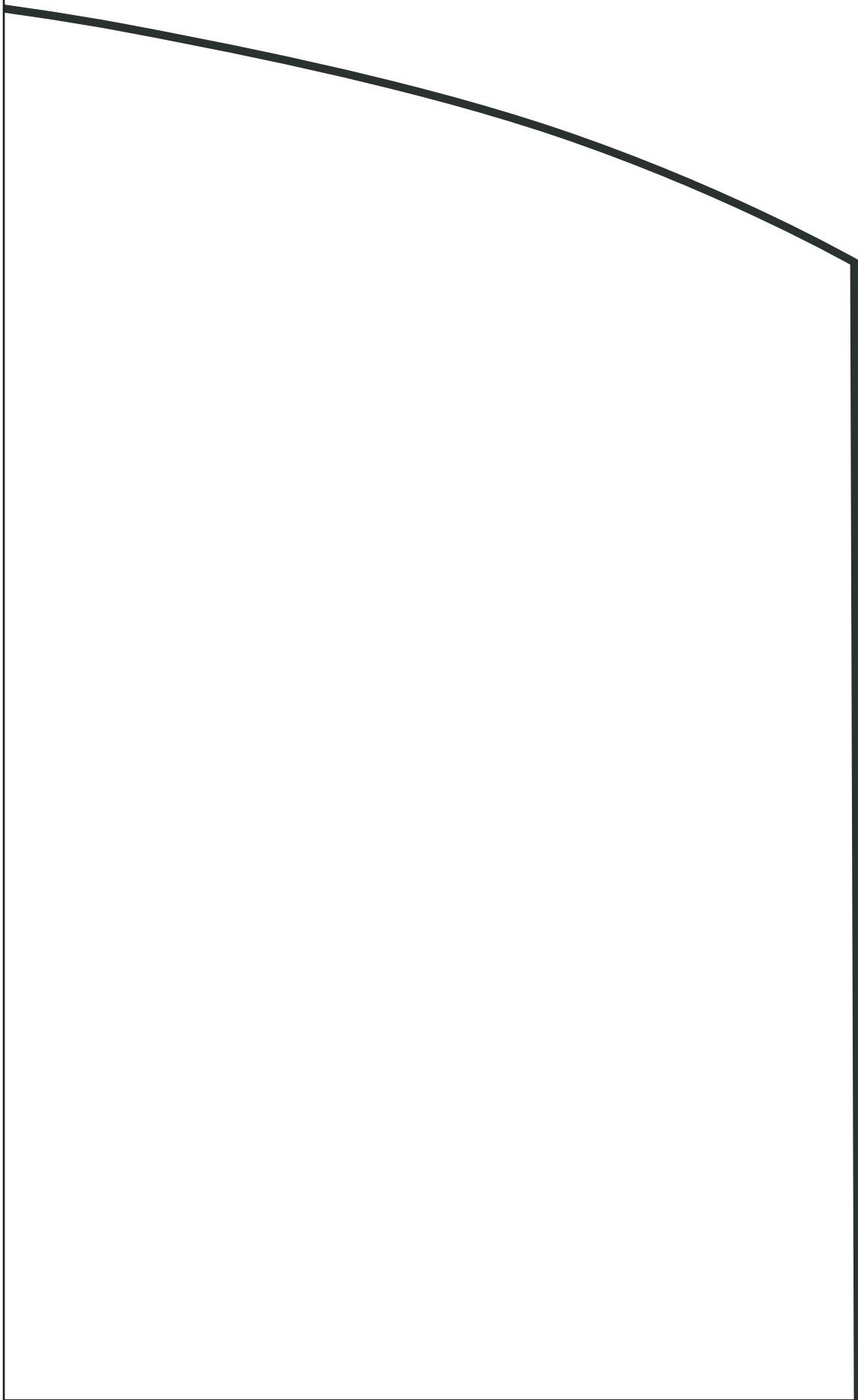
15

**KIM**  
**FRONT**  
cut two  
on fold



Hem fold





17



DN FOLD



**MONO  
T BAND**

**2 pieces  
of fabric**

