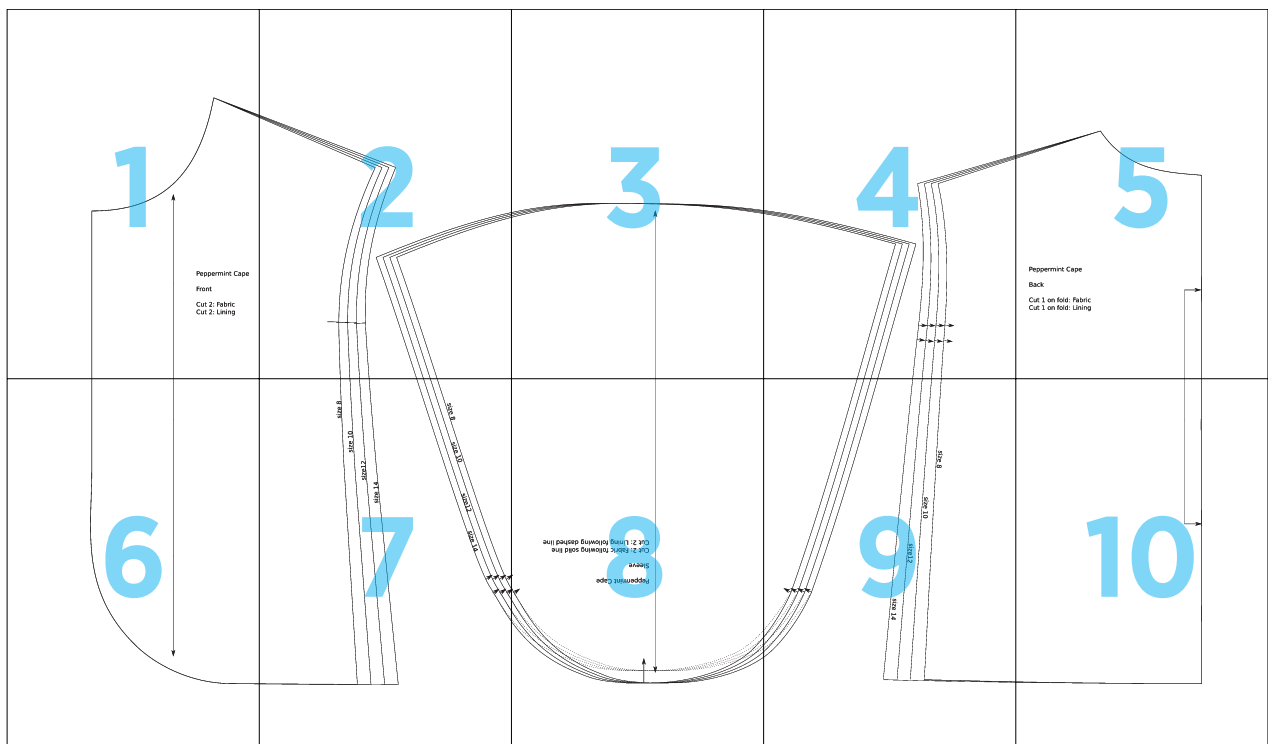
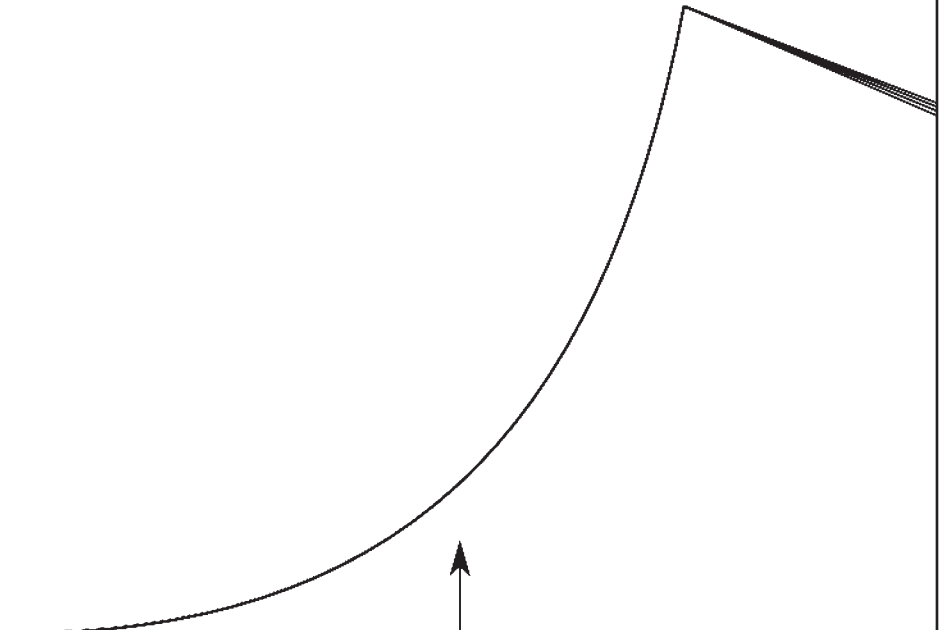


# Vintage Winter Cape



1



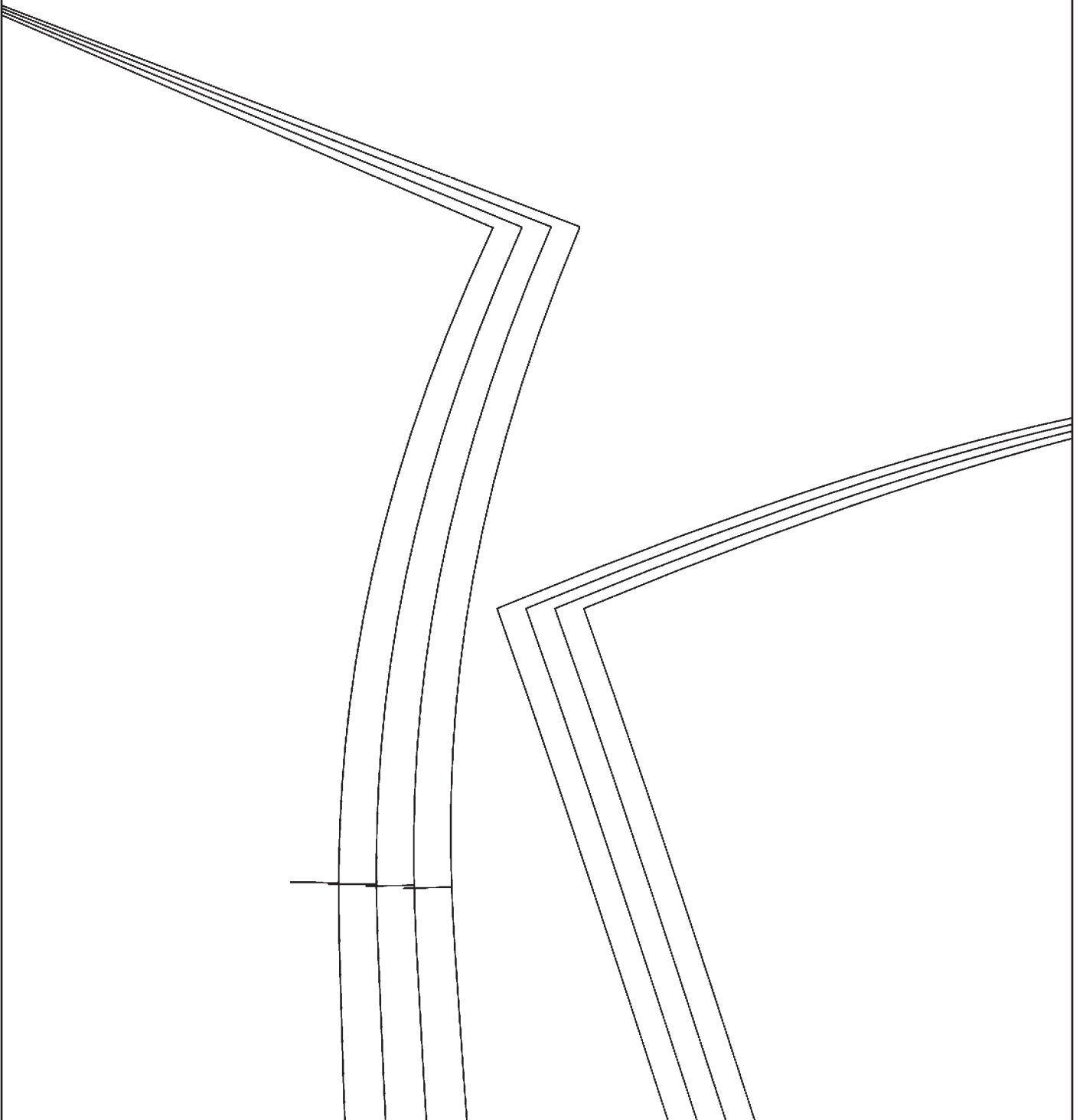
Peppermint Cape

Front

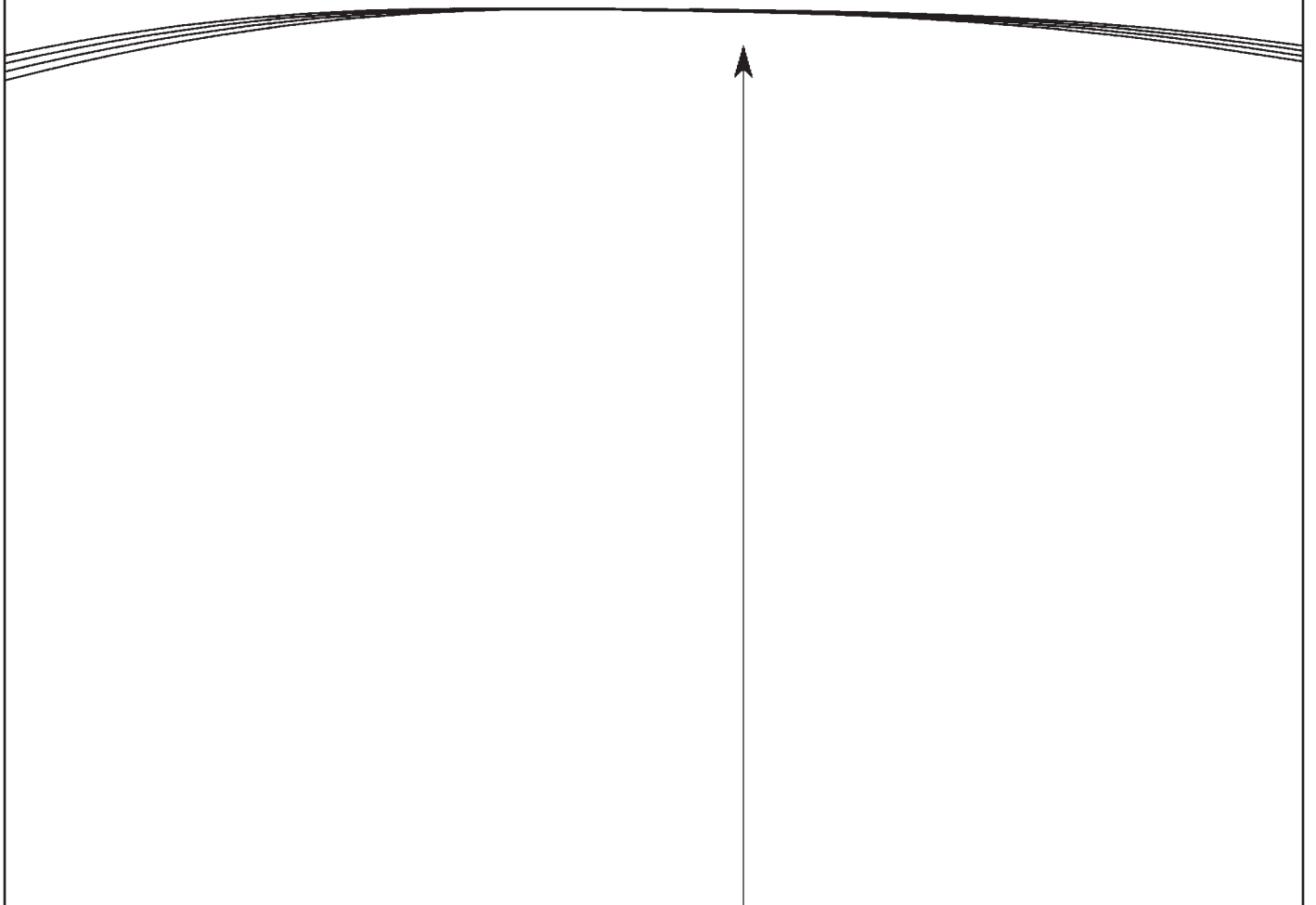
Cut 2: Fabric

Cut 2: Lining

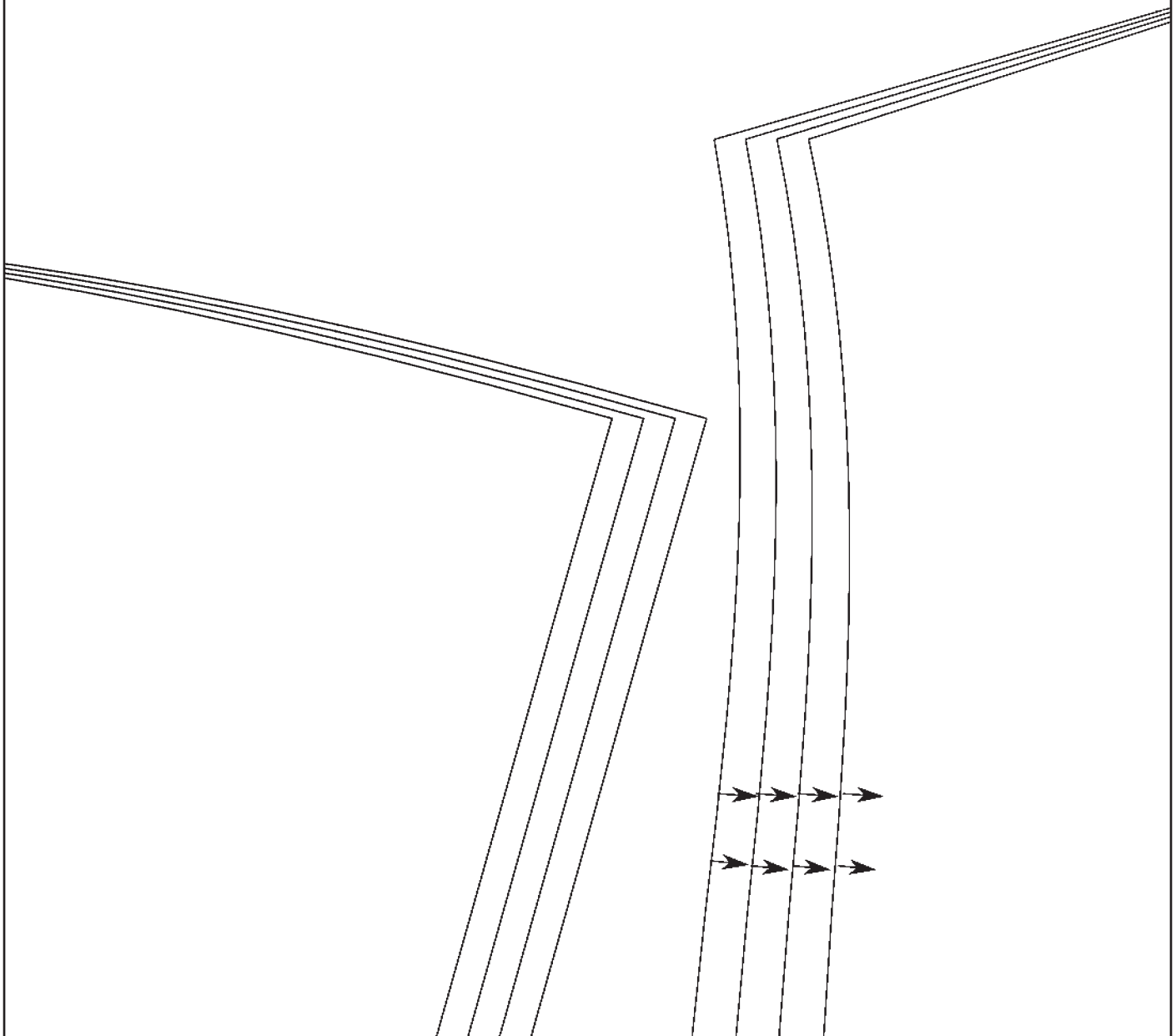
2



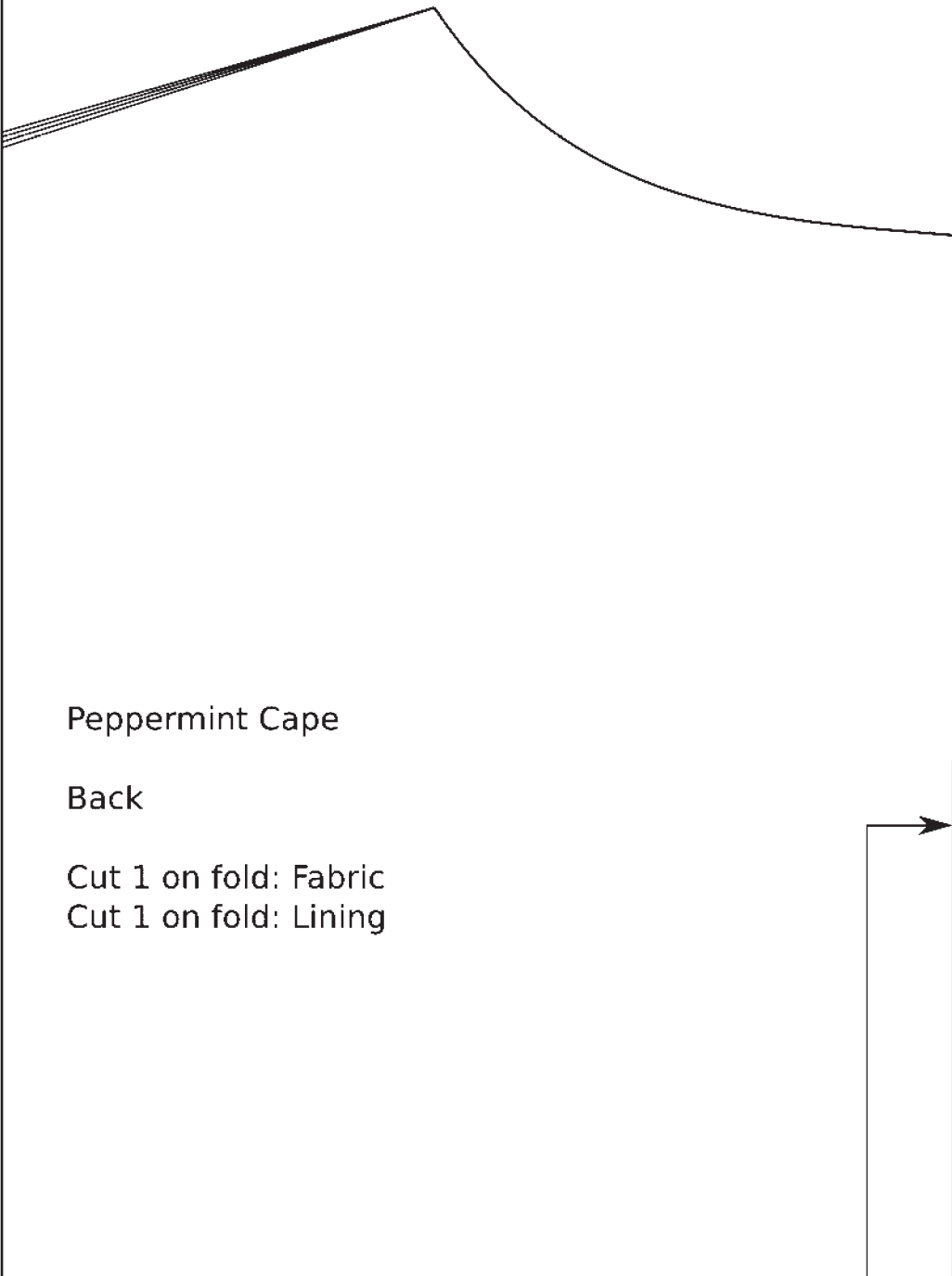
3



4



5



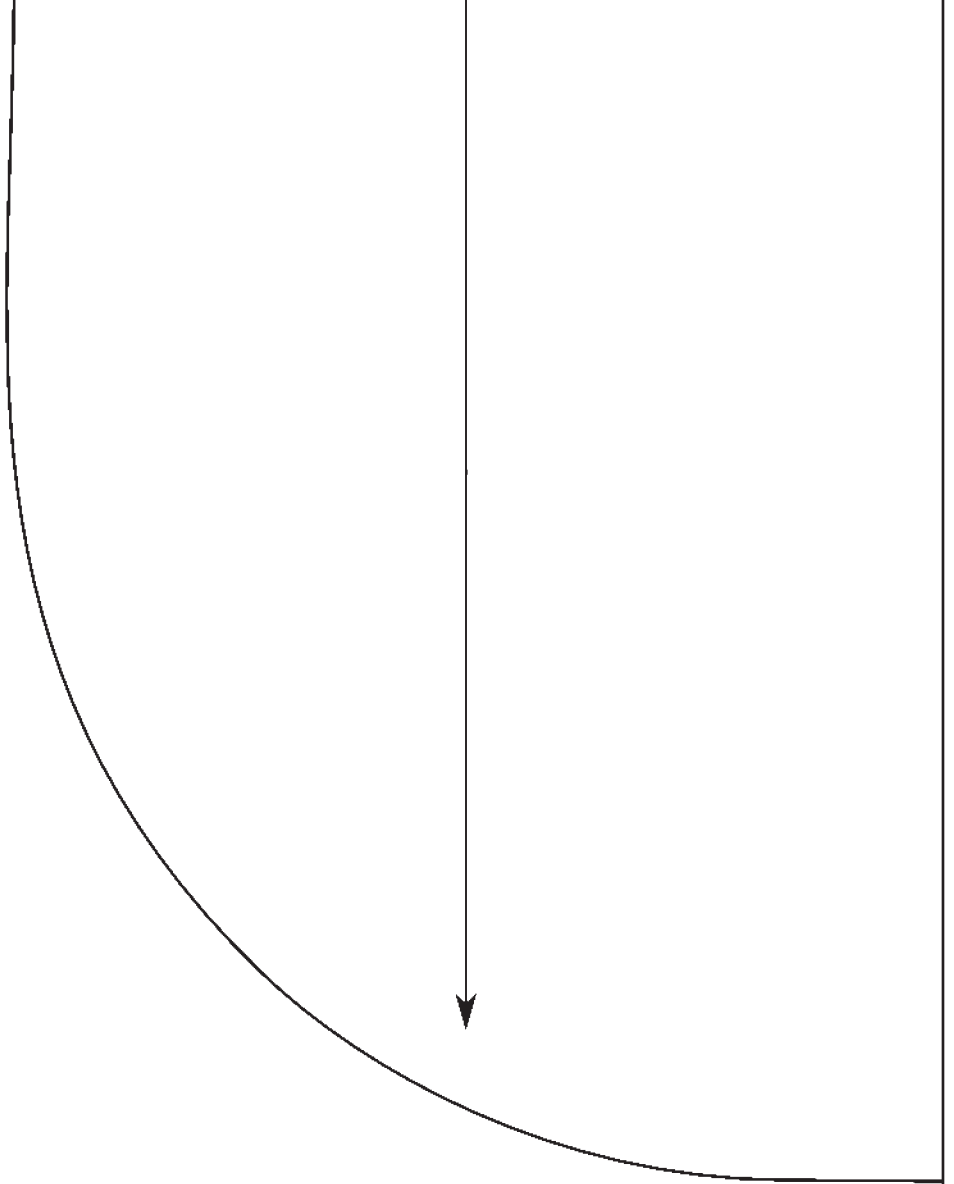
Peppermint Cape

Back

Cut 1 on fold: Fabric

Cut 1 on fold: Lining

6



7

size 8

size 10

size 12

size 14

size 8

size 10

size 12

size 14

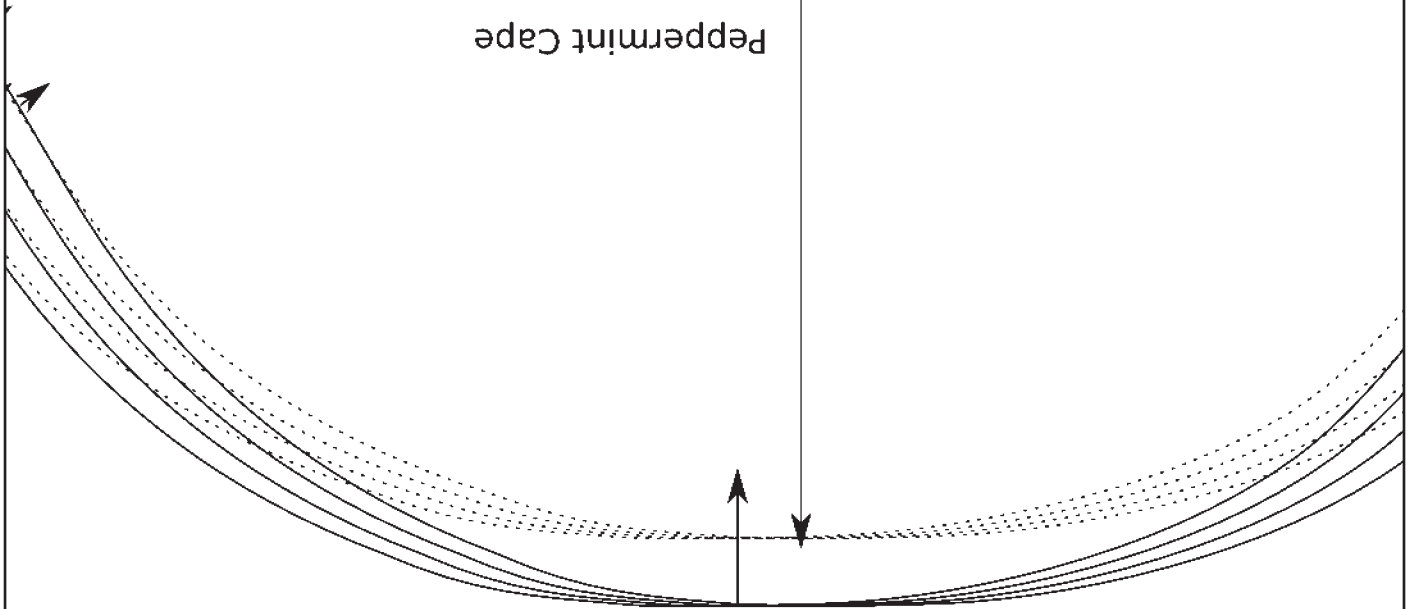




8



Peppermint Cape  
Sleeve  
Cut 2: Fabric following solid line  
Cut 2: Lining following dashed line



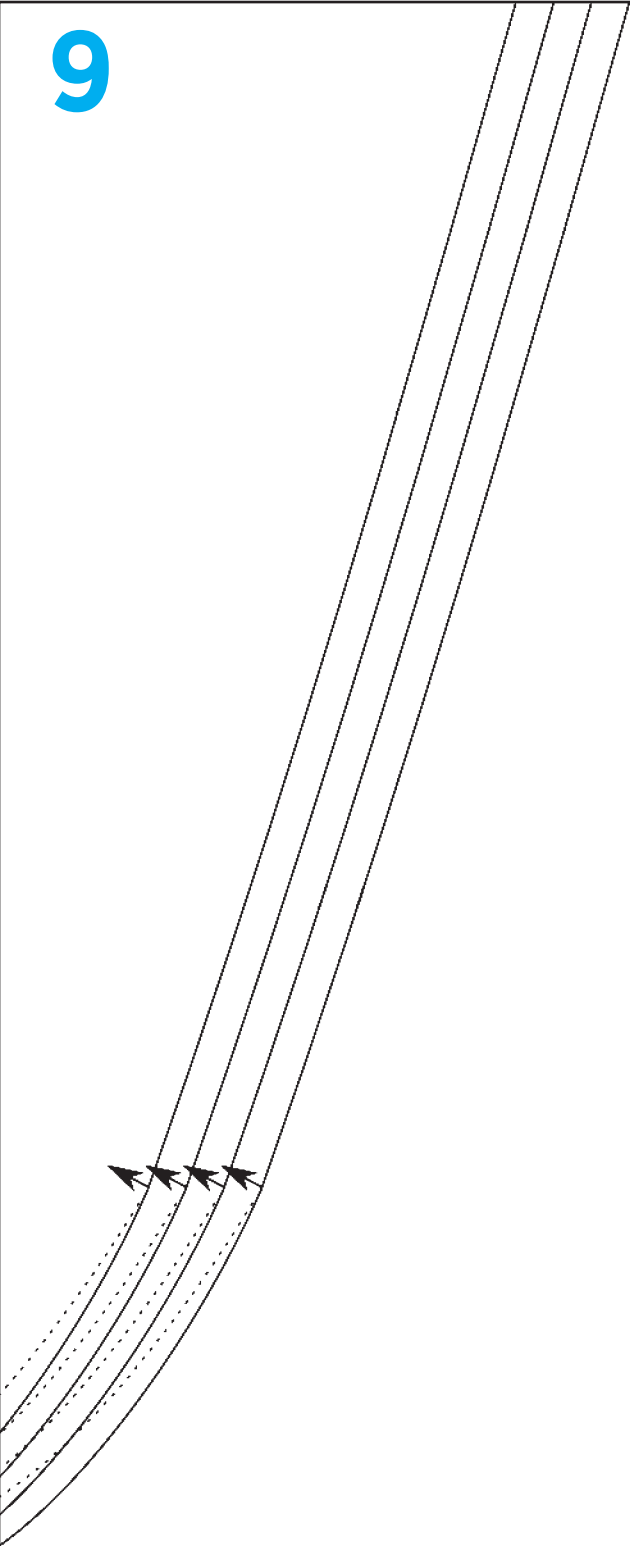


size 8

size 10

size 12

size 14



9

10

