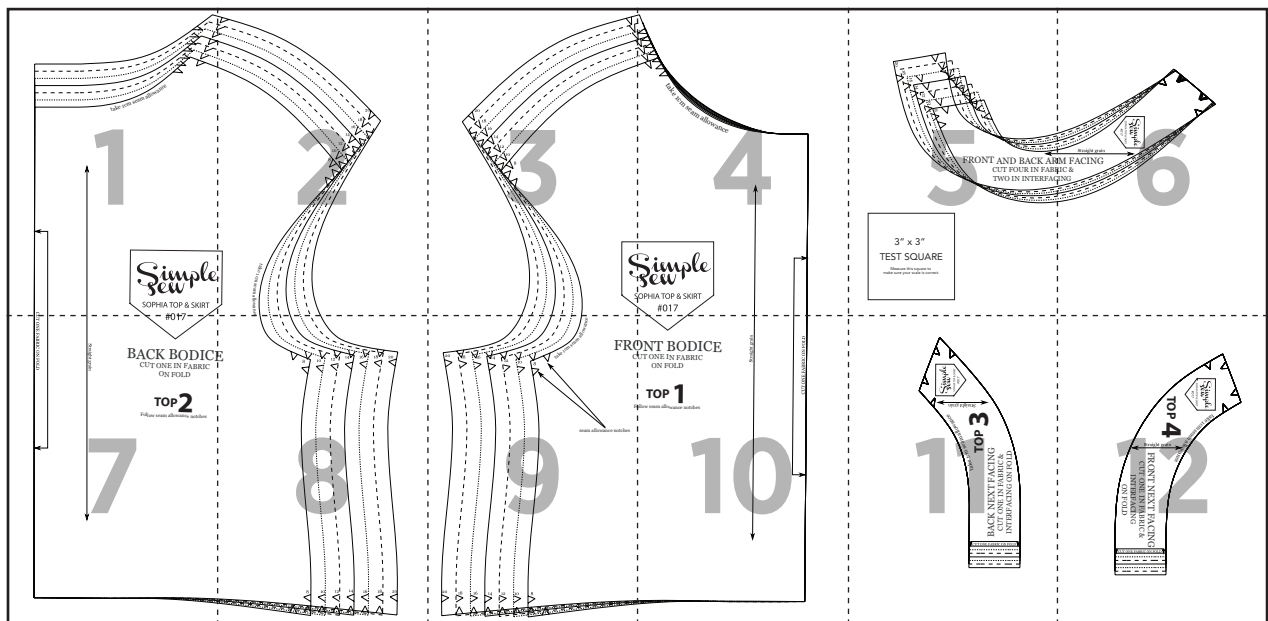
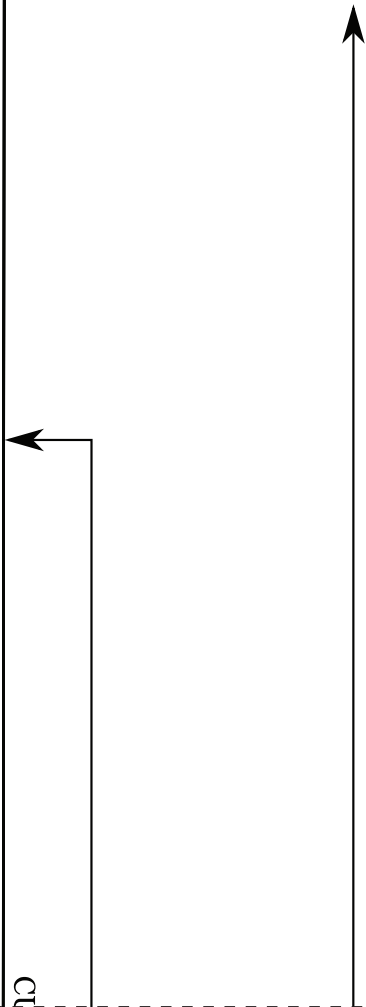
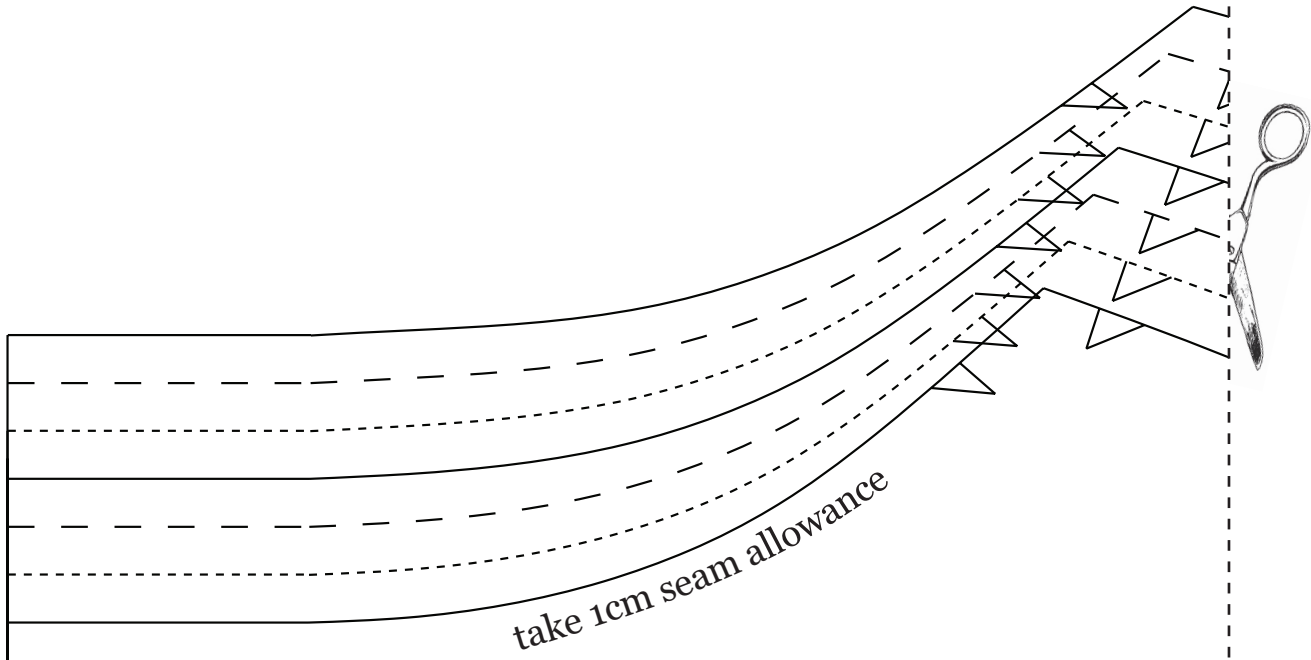


Fantastic frill - Sophia top

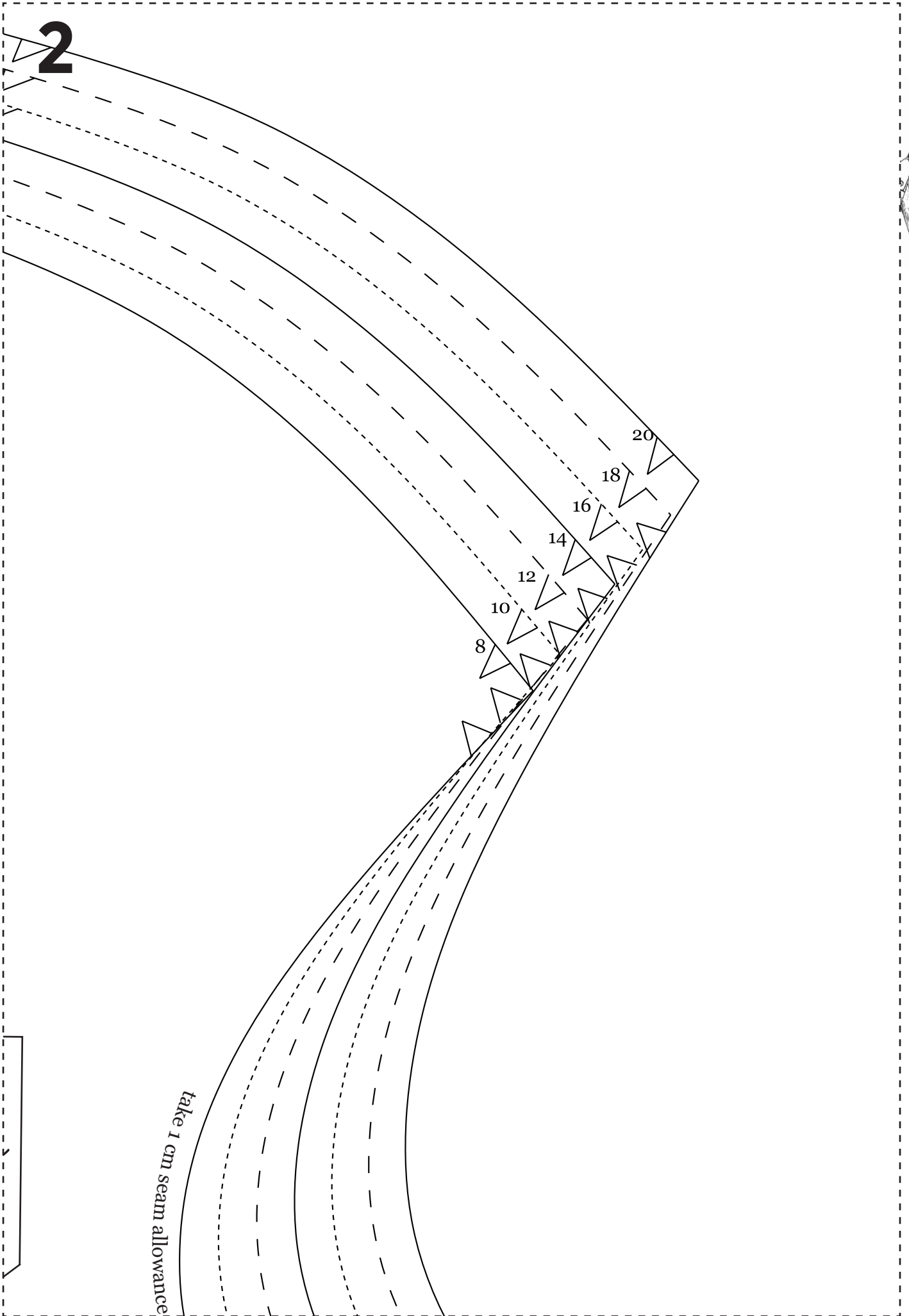


1



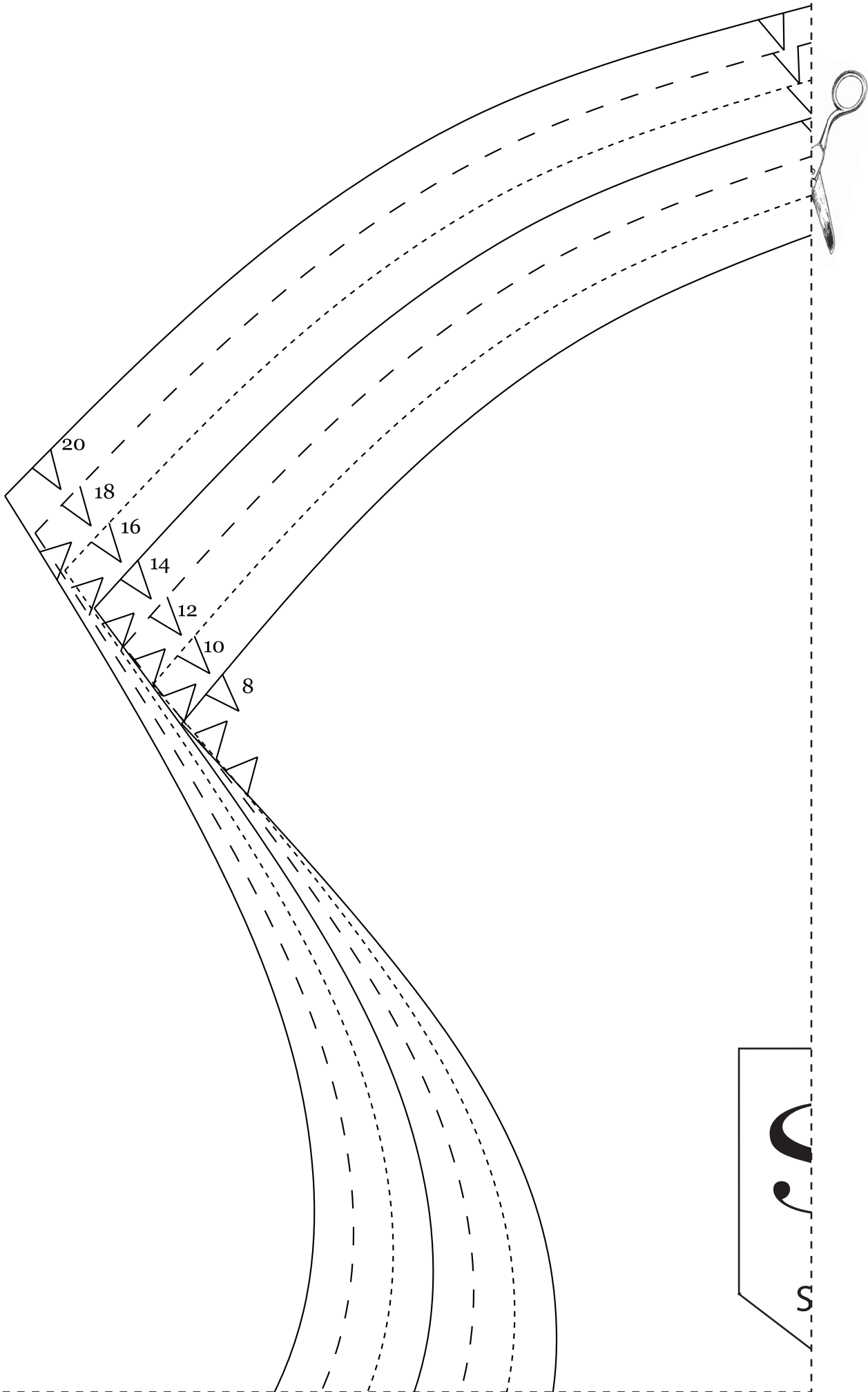
**Simple
sew**
SOPHIA TOP & SKIRT
#017

2



take 1 cm seam allowance

3



4

take 1cm seam allowance

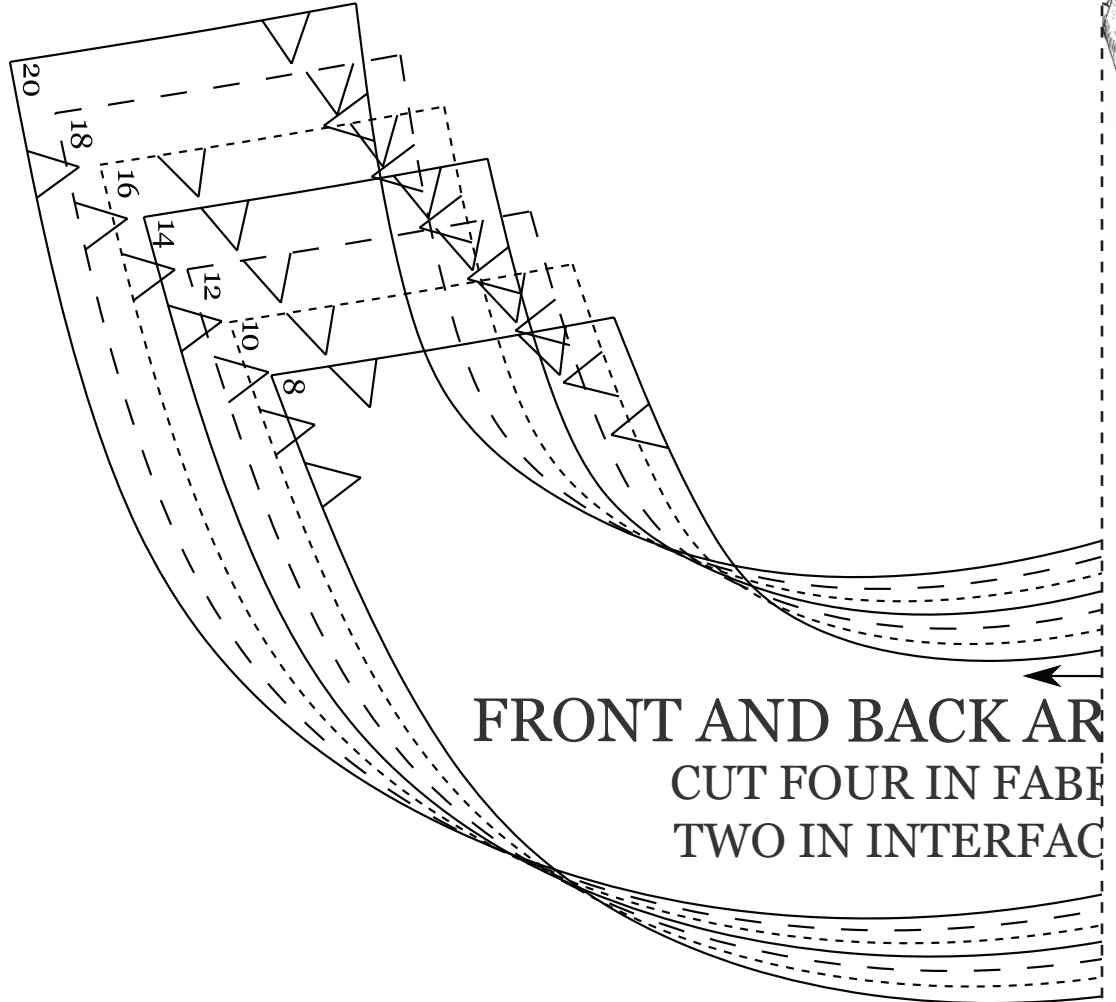


Simple
sew

OPHIA TOP & SKIRT

#017

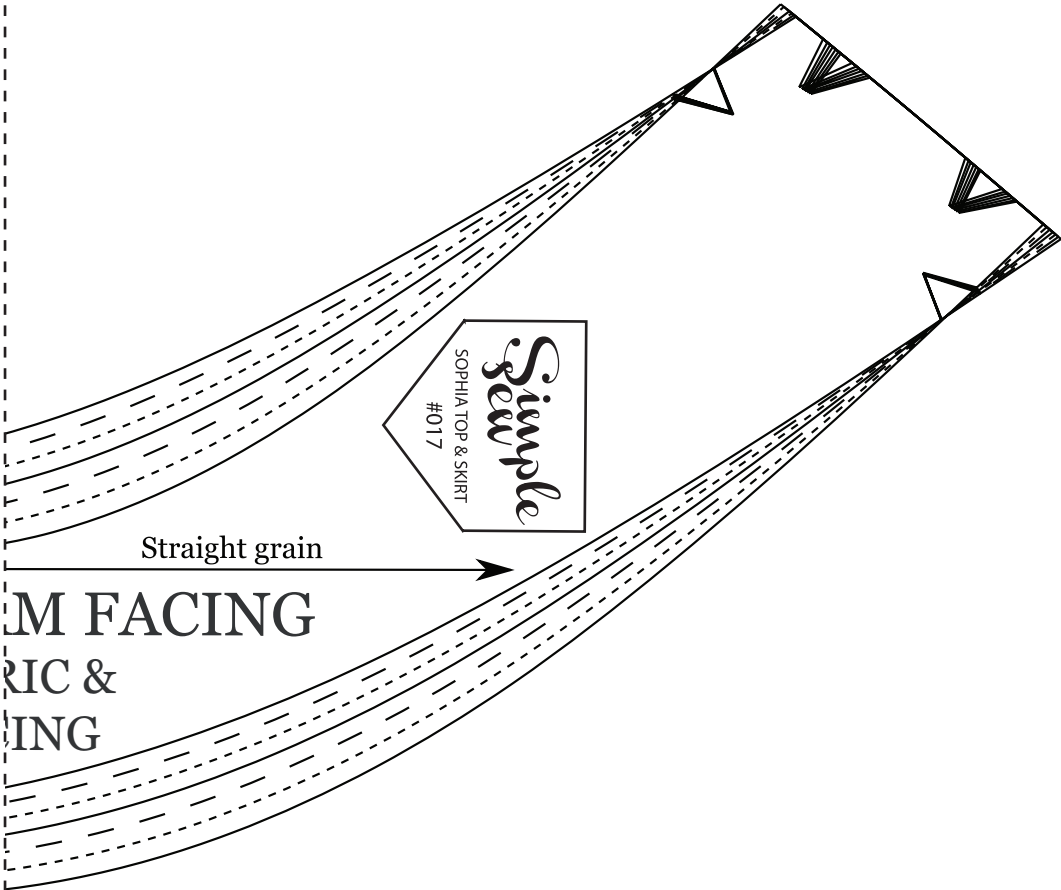
5



3" x 3"
TEST SQUARE

Measure this square to
make sure your scale is correct.

6



Simple Sew
SOPHIA TOP & SKIRT
#017

Straight grain

BODICE FRONT
FACING
LAPEL &
SKIRT

7

CUT ONE FABRIC ON FOLD

Straight grain

#017

BACK BODICE

CUT ONE IN FABRIC
ON FOLD

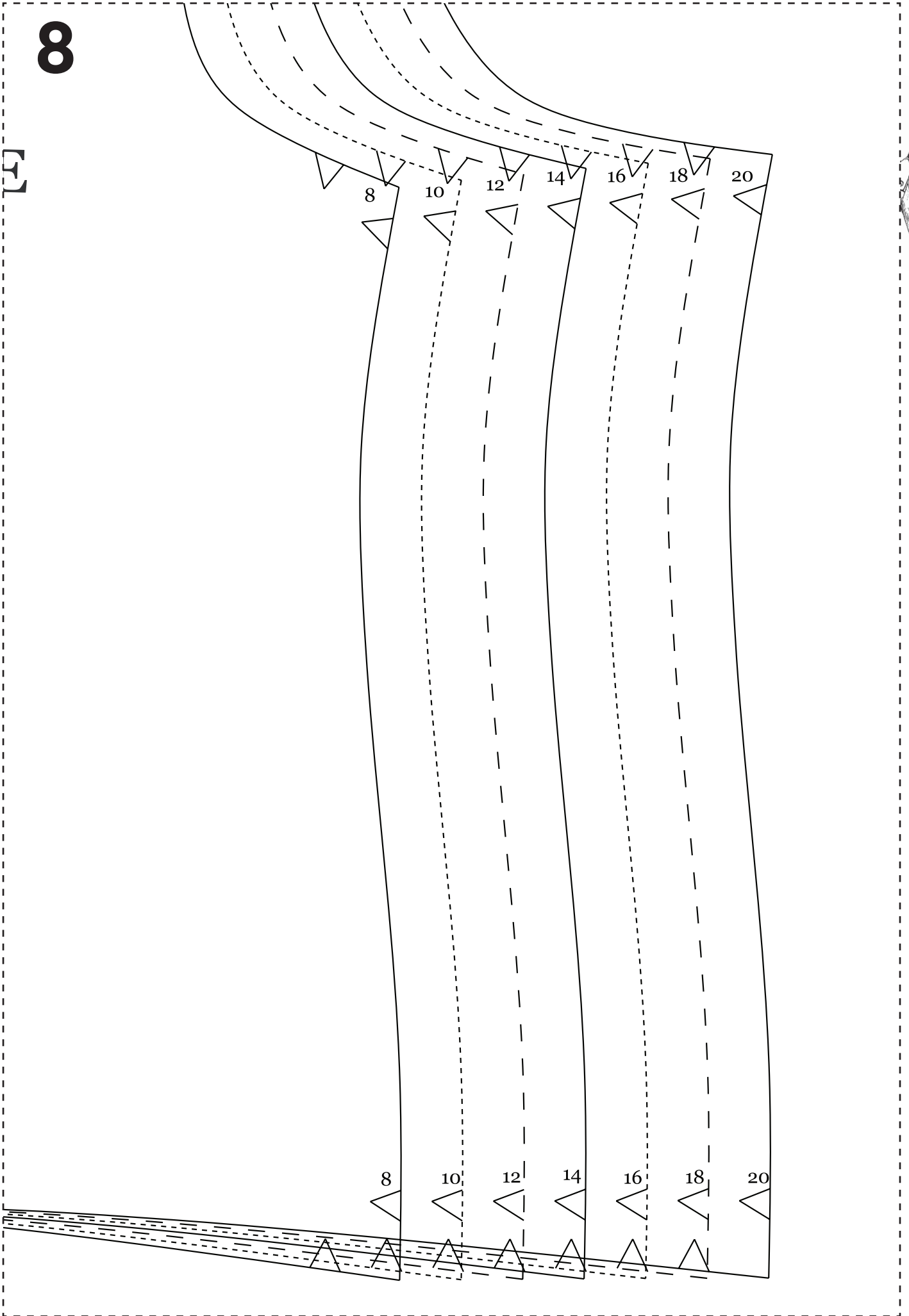
TOP 2

Follow seam allowance notches



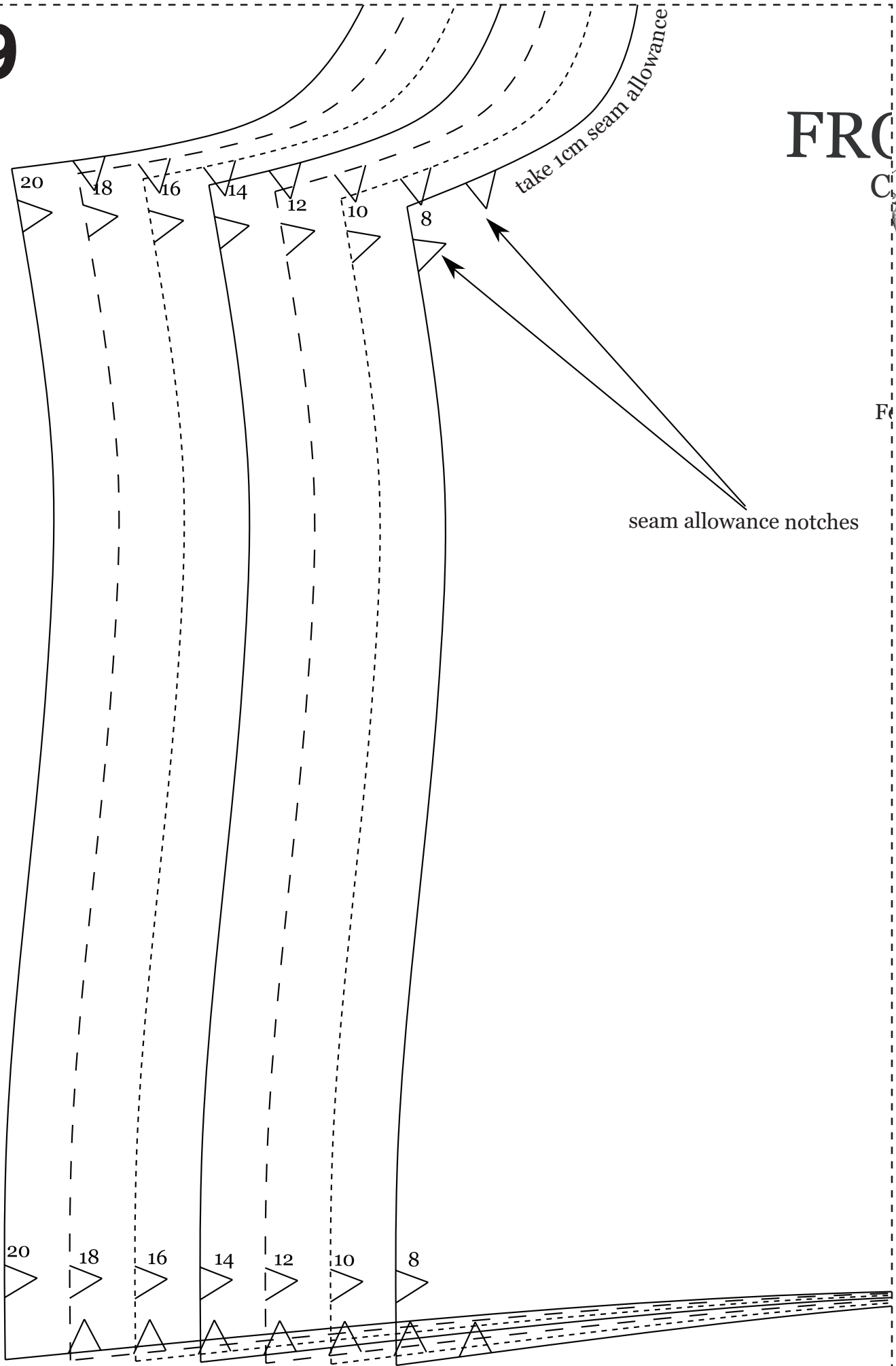
8

[5]



9

FRONT



seam allowance notches

take 1cm seam allowance

10

FRONT BODICE

CUT ONE IN FABRIC
ON FOLD

TOP 1

Follow seam allowance notches

Straight grain

CUT ONE FABRIC ON FOLD



