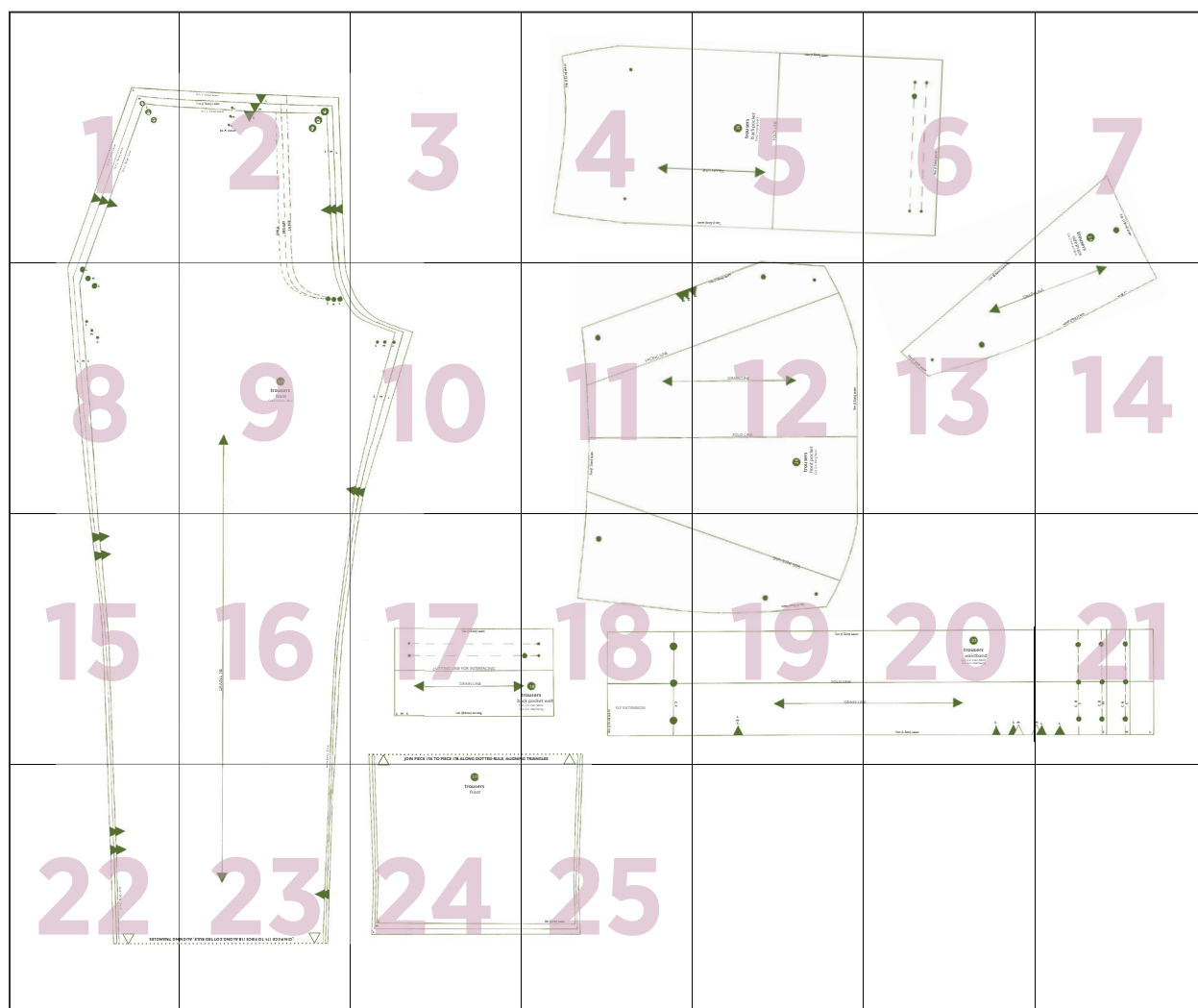
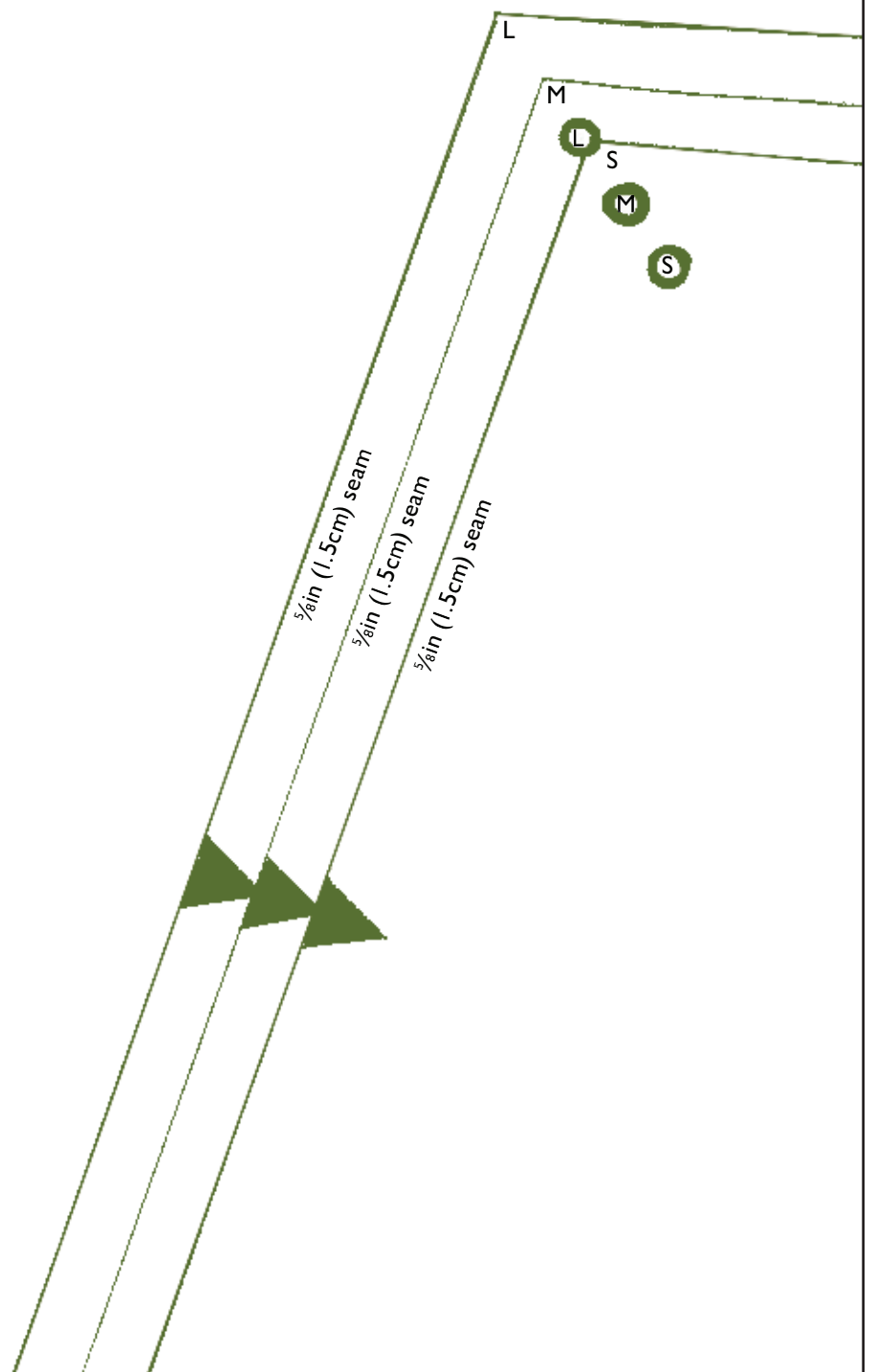


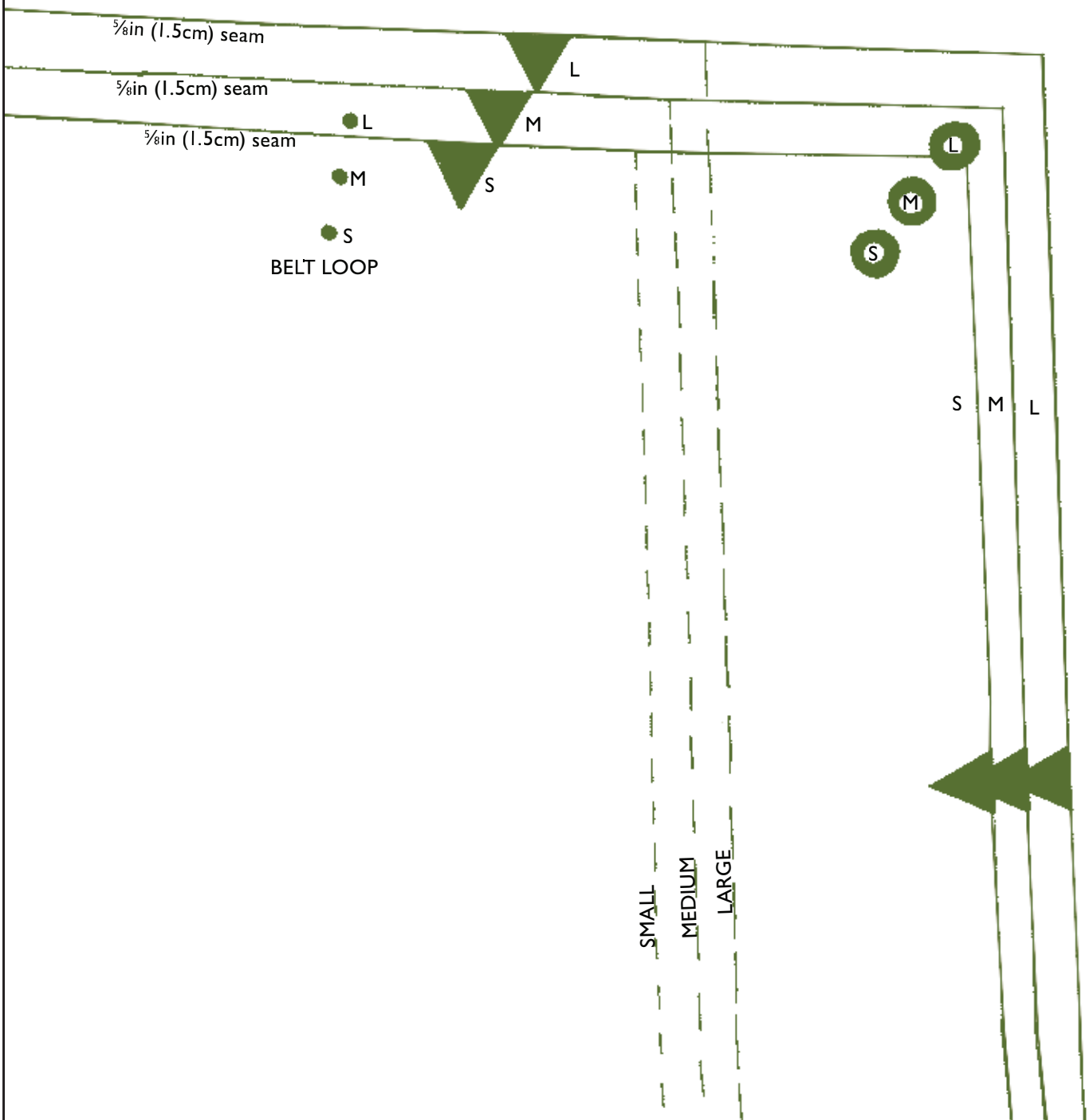
# TROUSERS

## PART B



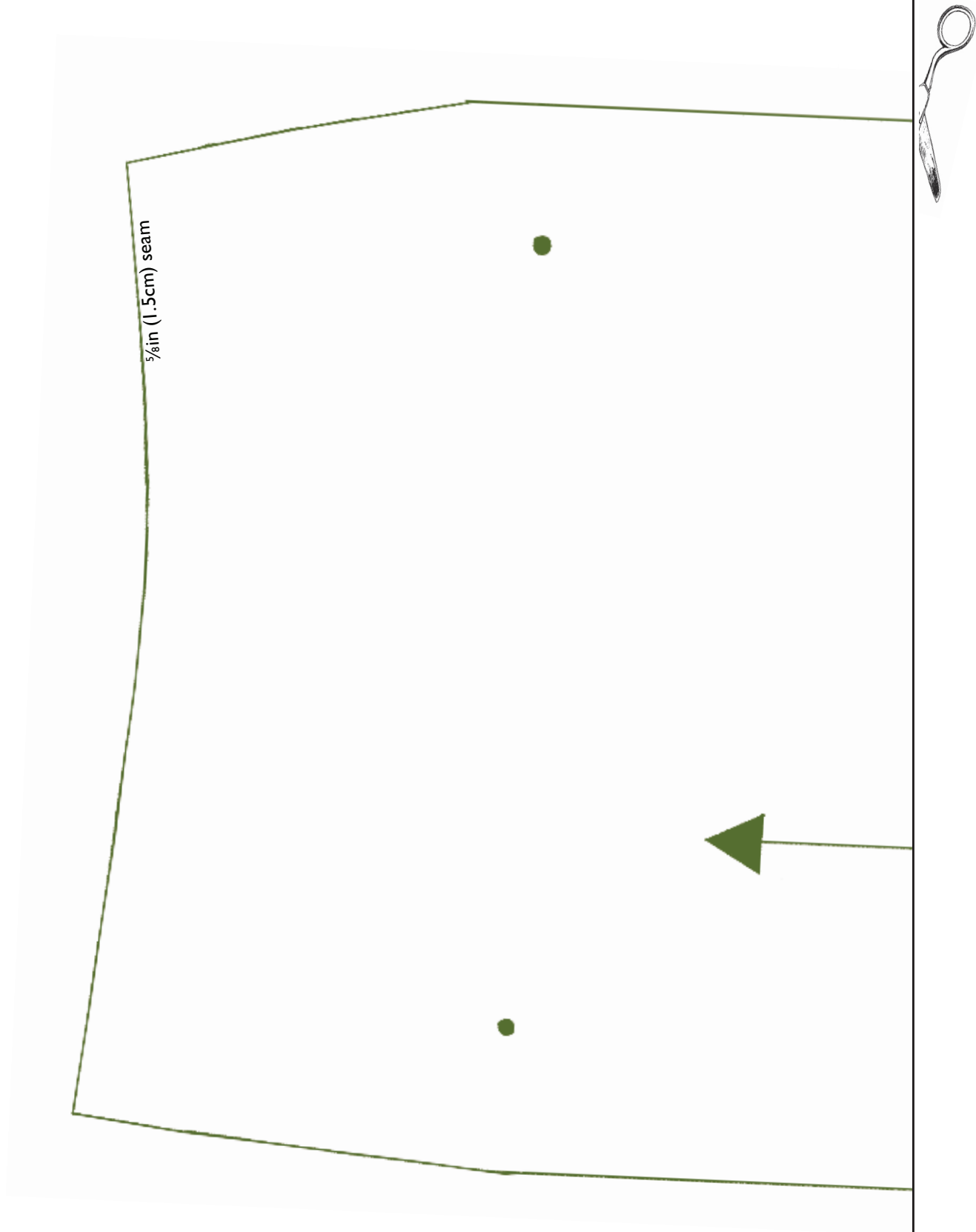
1







4



5



$\frac{5}{8}$ in (1.5cm) seam

25

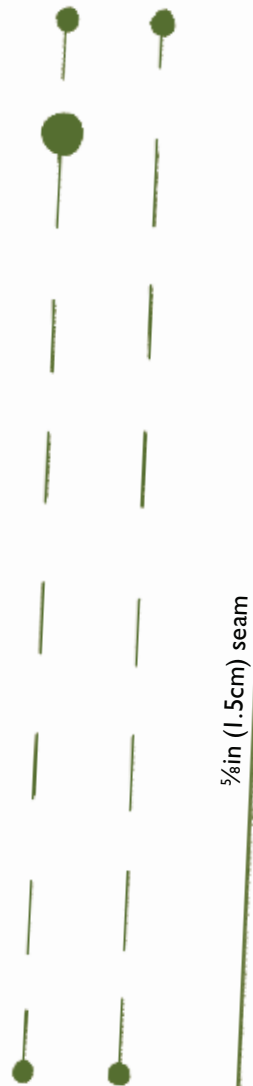
trousers  
back pocket  
Cut 2 in lining fabric

FOLD LINE

GRAIN LINE



$\frac{5}{8}$ in (1.5cm) seam

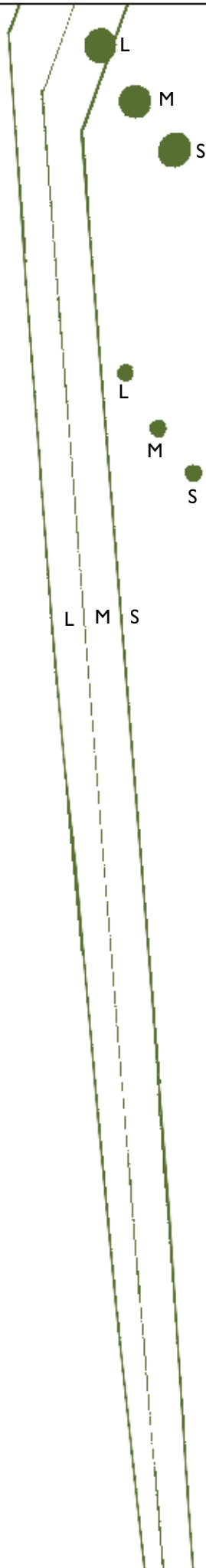


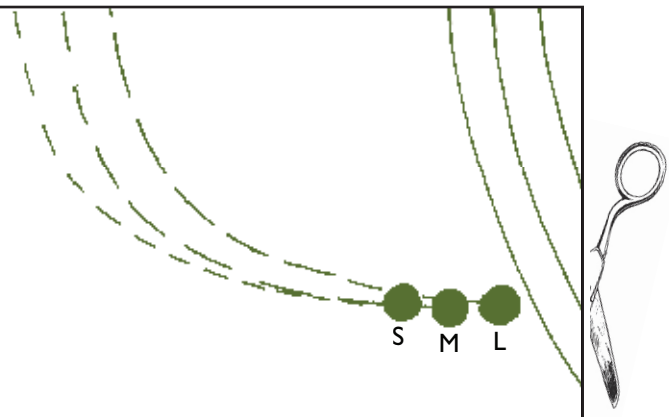


trousers  
side piece  
Cut 2 in main fabric



$\frac{5}{8}$  in (1.5cm) seam



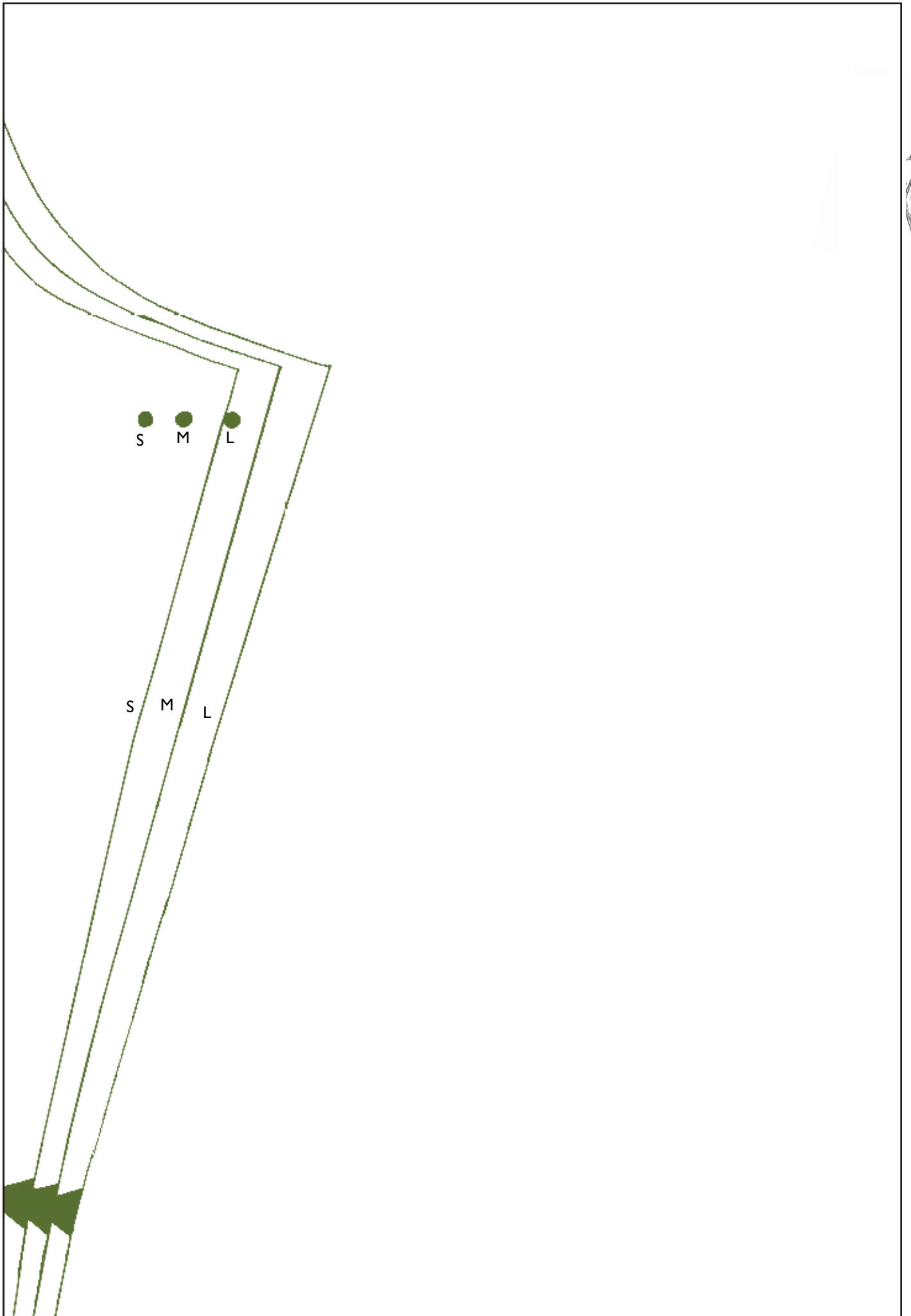


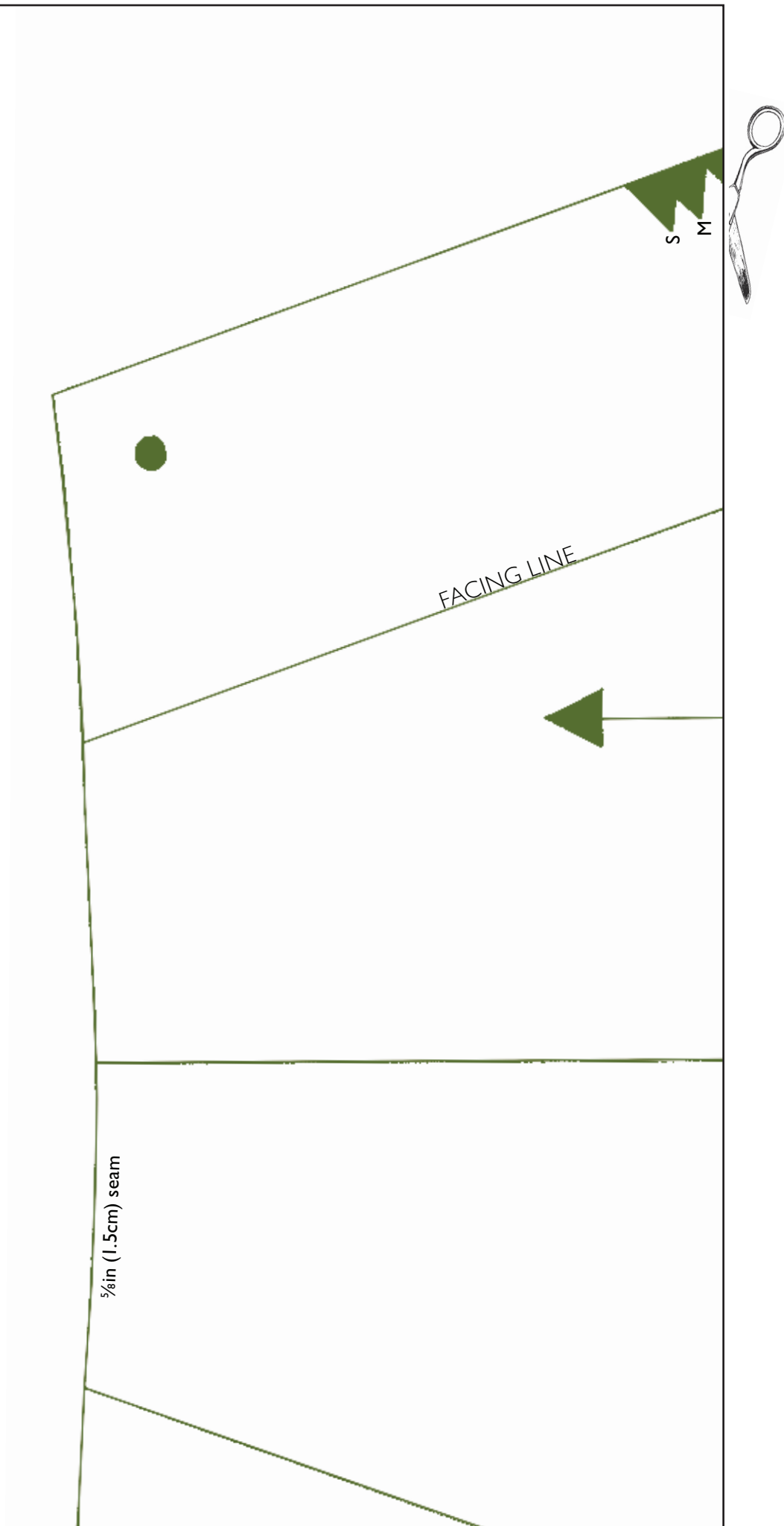
17

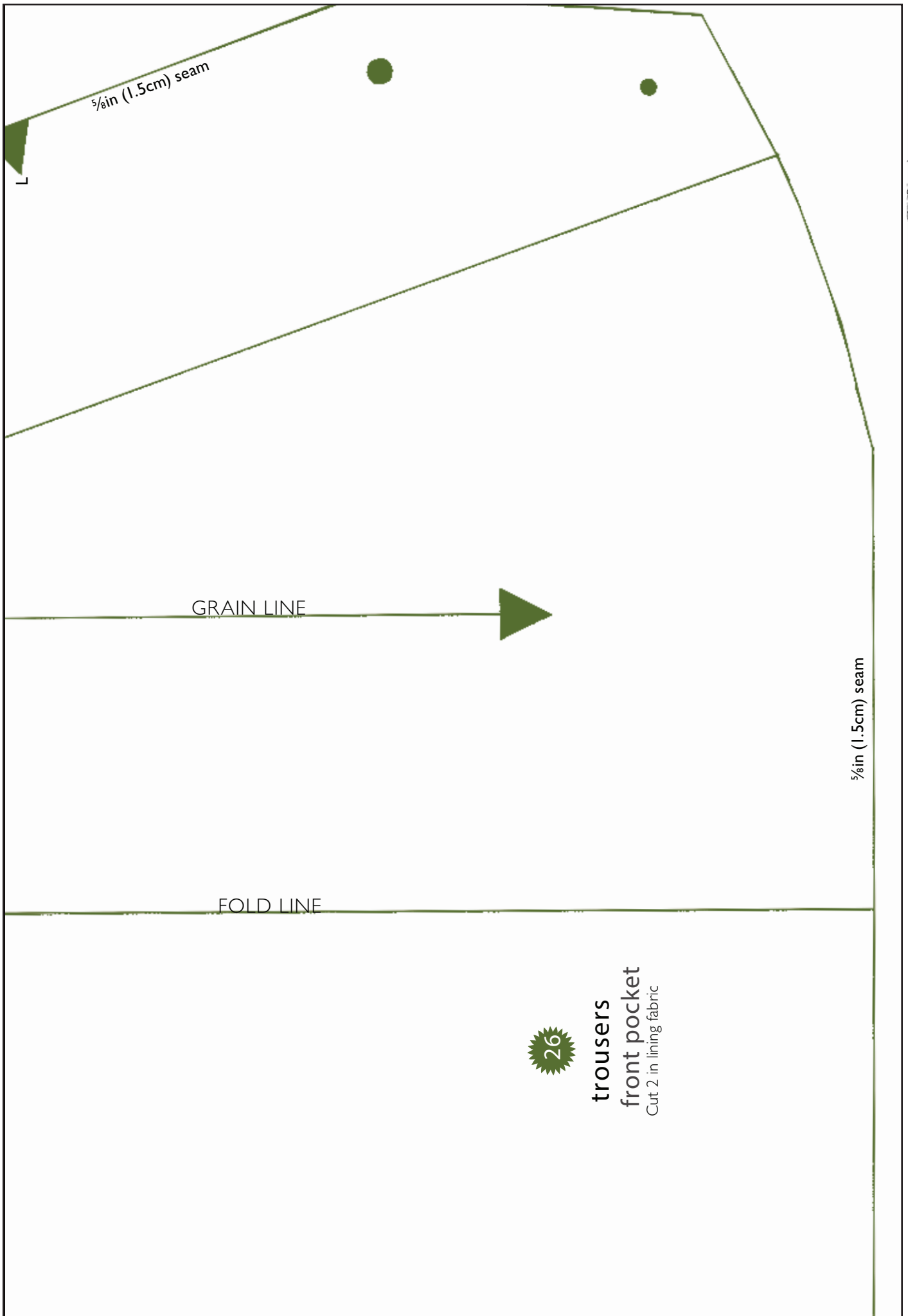
## trousers front

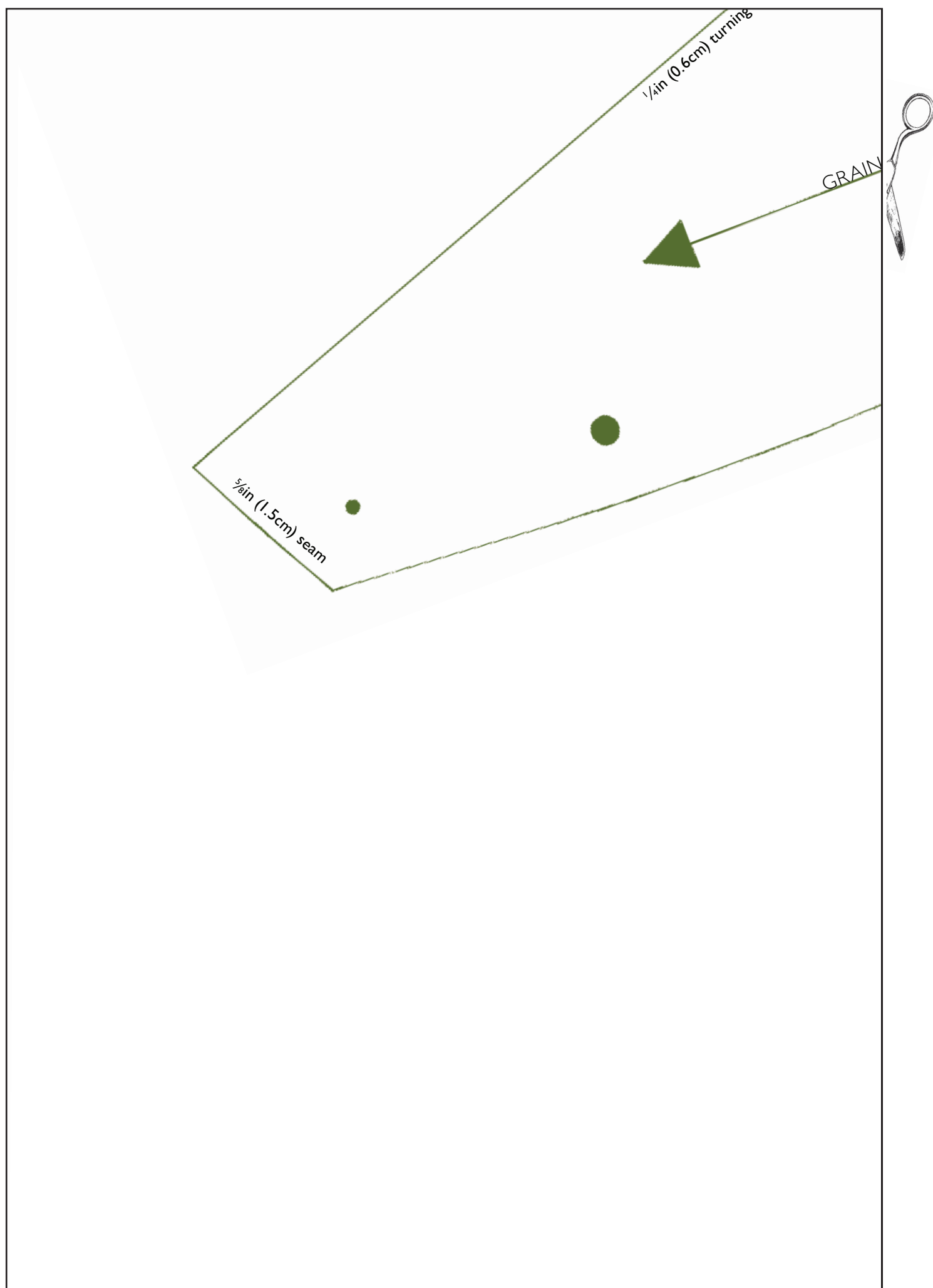
Cut 2 in main fabric

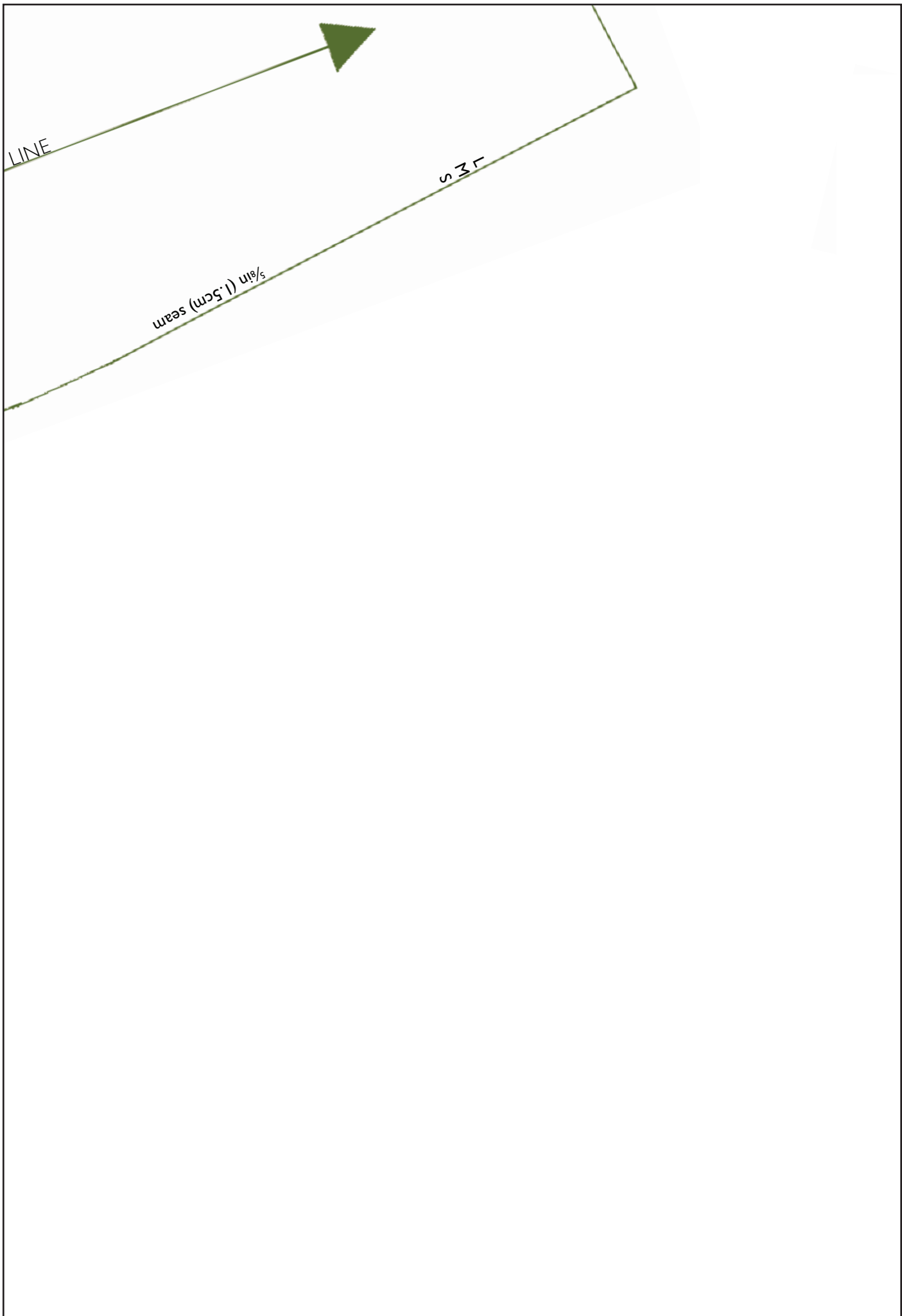


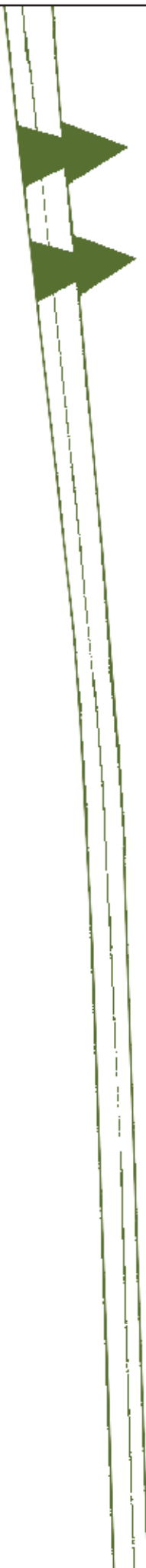








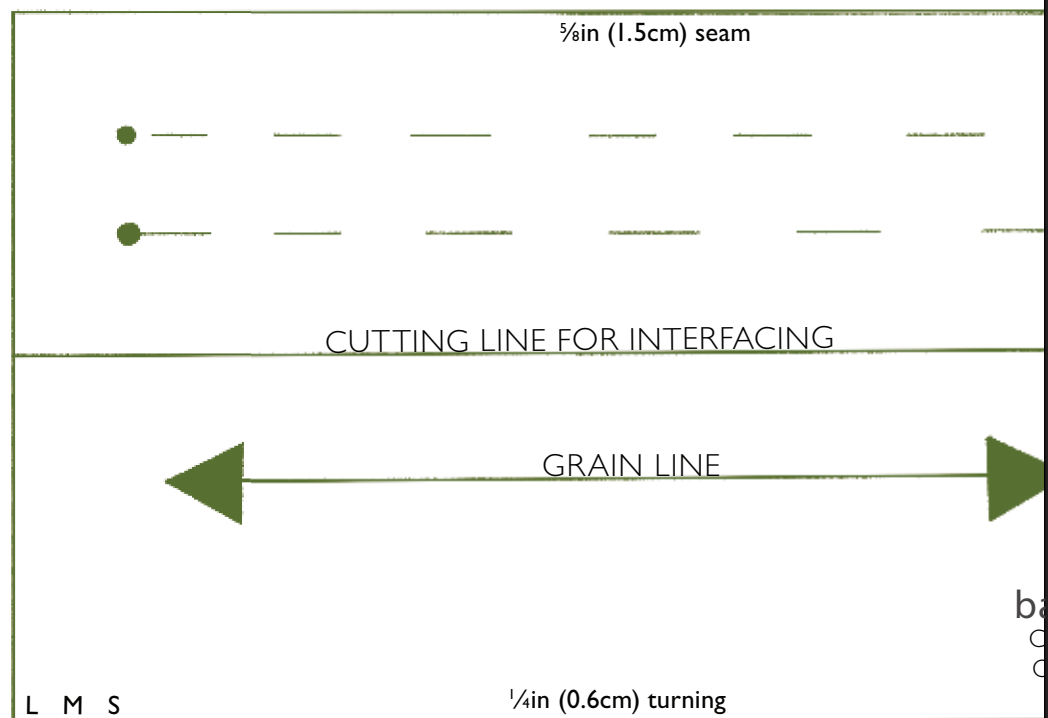




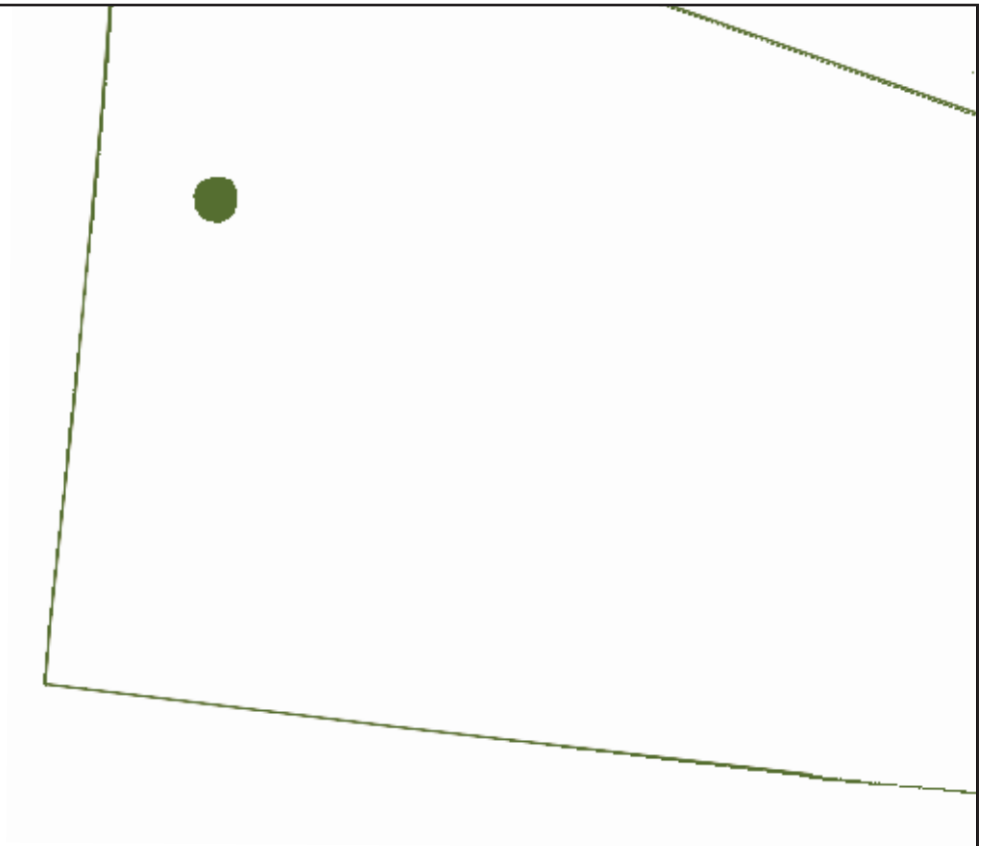
GRAIN LINE

$\frac{5}{8}$ in (1.5cm) se





JOIN PIECE 17A TO PIECE 17B ALONG DOTTED RULE, ALIGNING



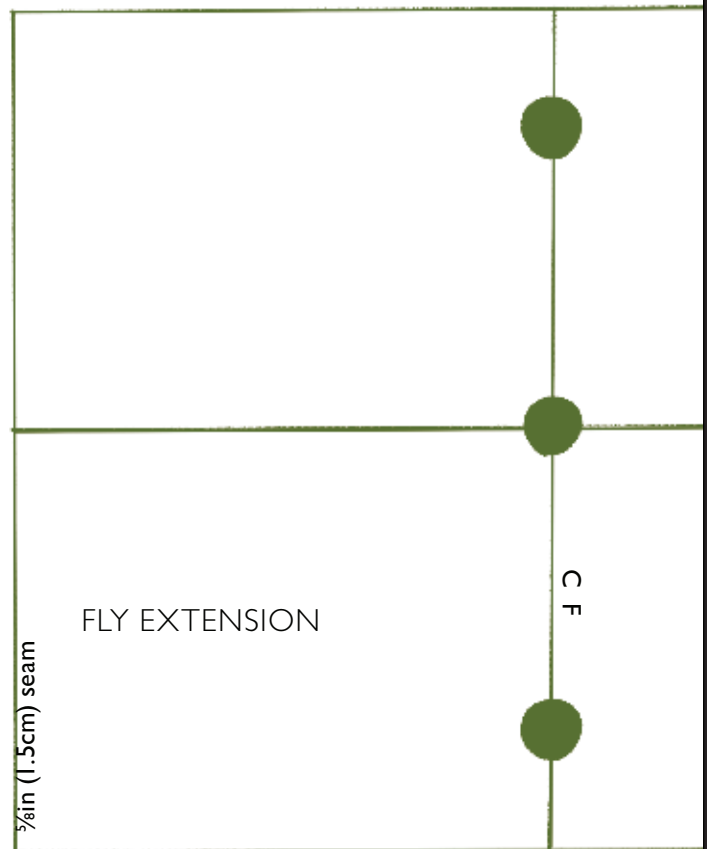
18

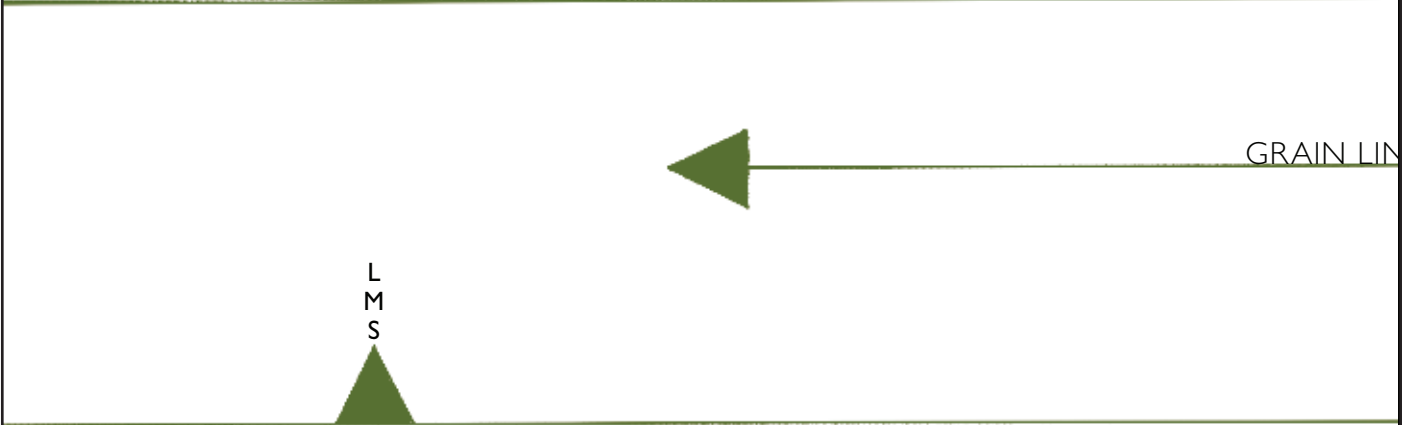
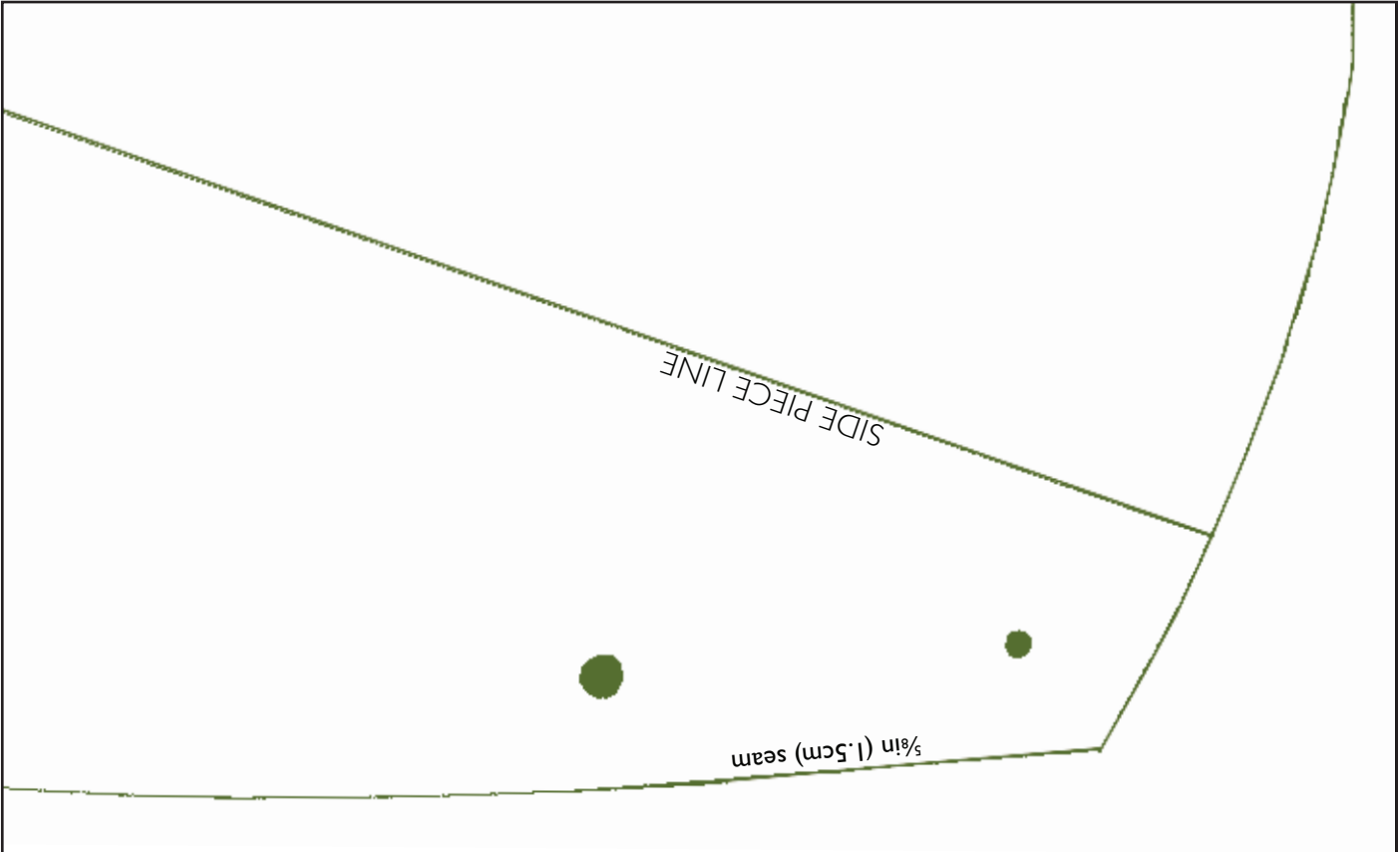
trousers

back pocket welt

cut 2 in main fabric

cut 4 in interfacing







23

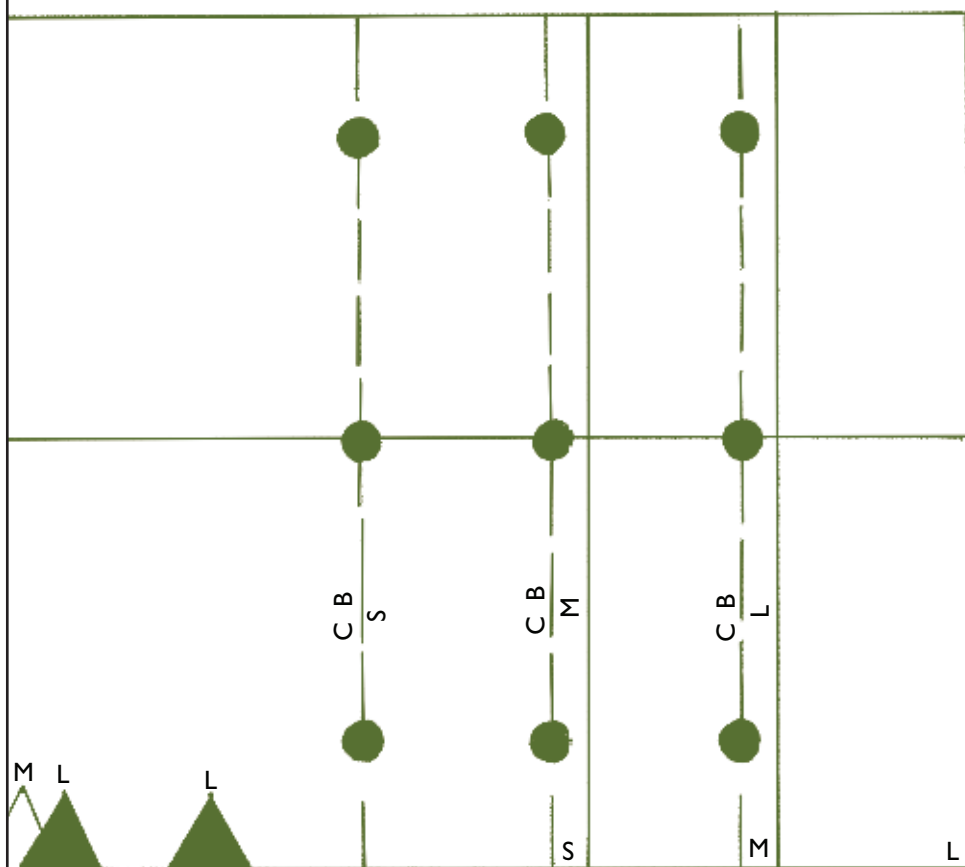
## trousers waistband

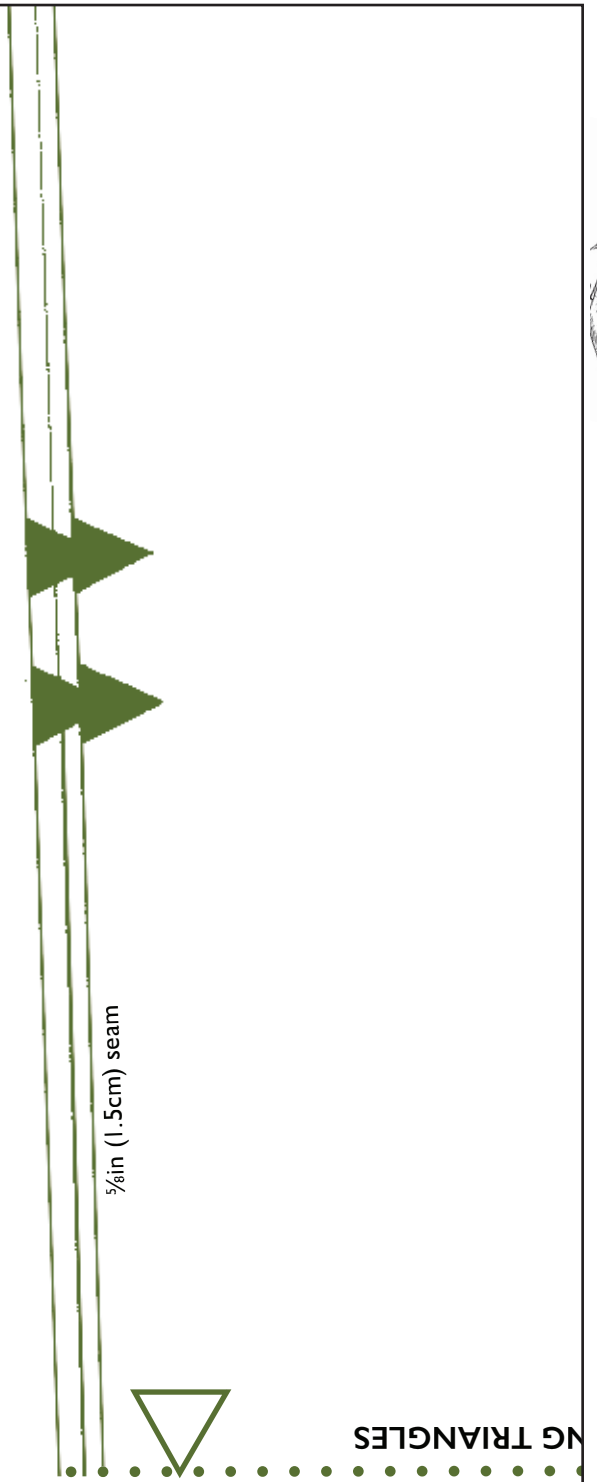
Cut 2 in main fabric  
Cut 2 in interfacing



$\frac{5}{8}$ in (1.5cm) seam









am



JOIN PIECE 17A TO PIECE 17B ALONG DOTTED RULE, ALIGN



trousers  
front



S  
M  
L



2in (5cm) seam