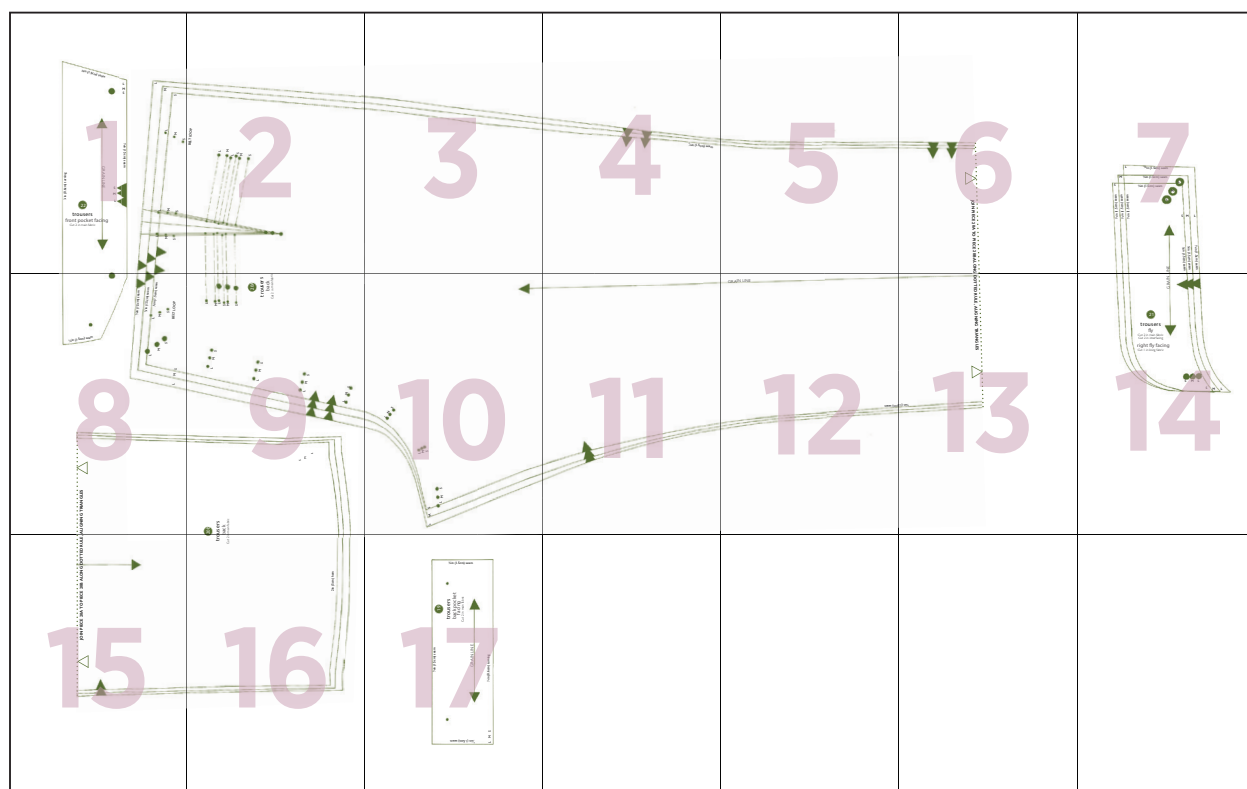
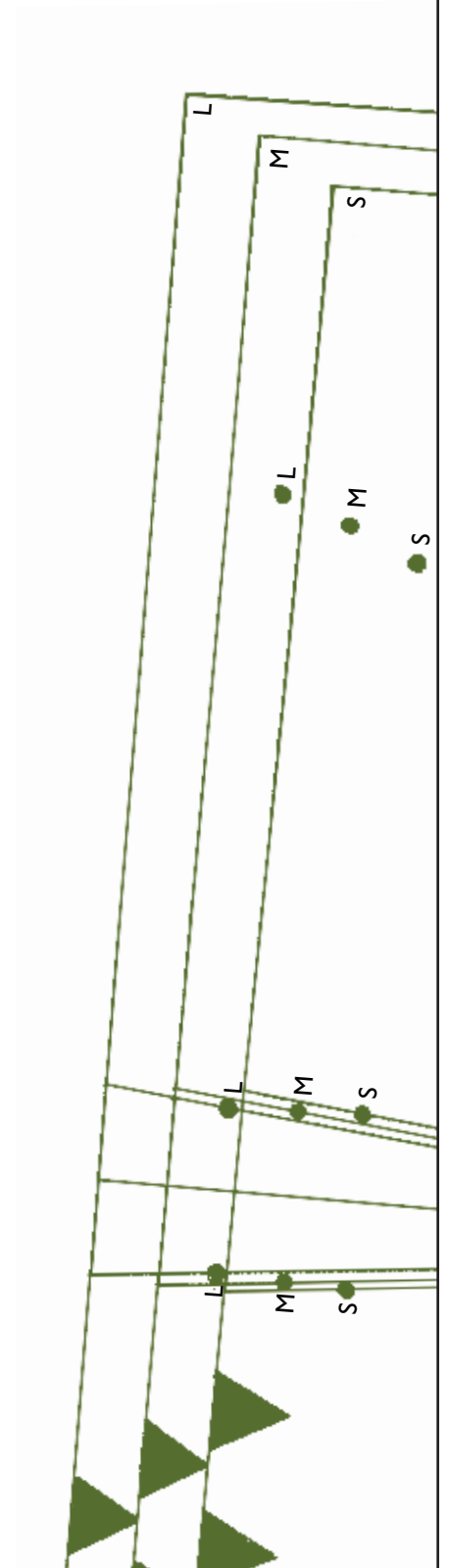
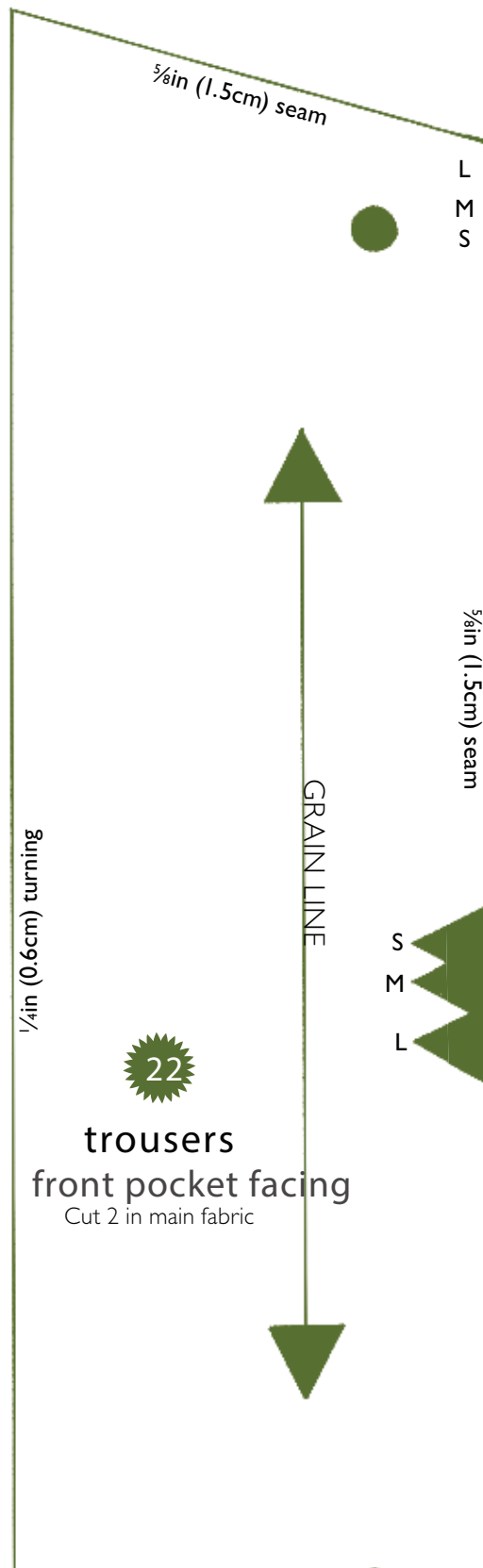


# TROUSERS

## PART A

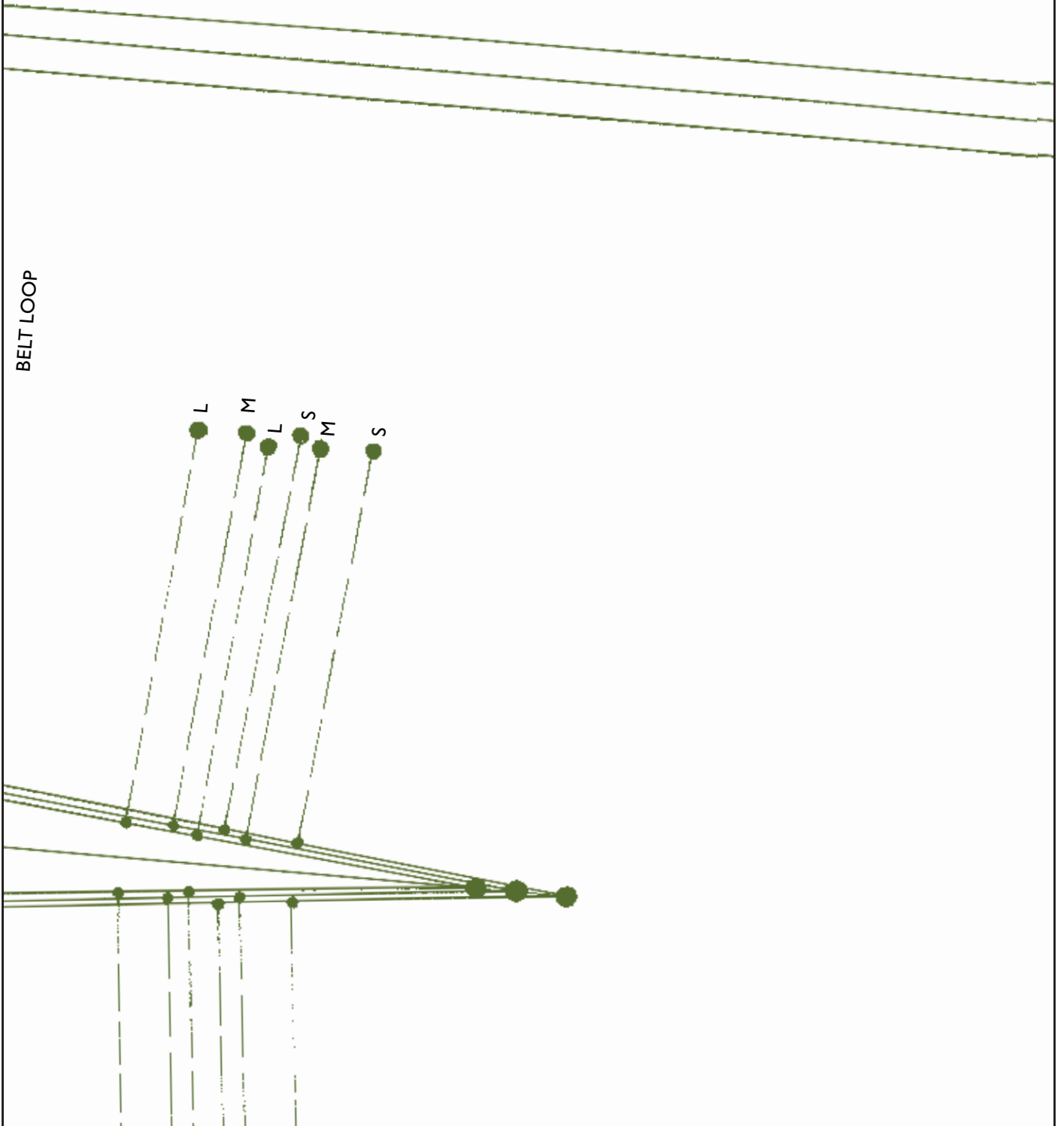




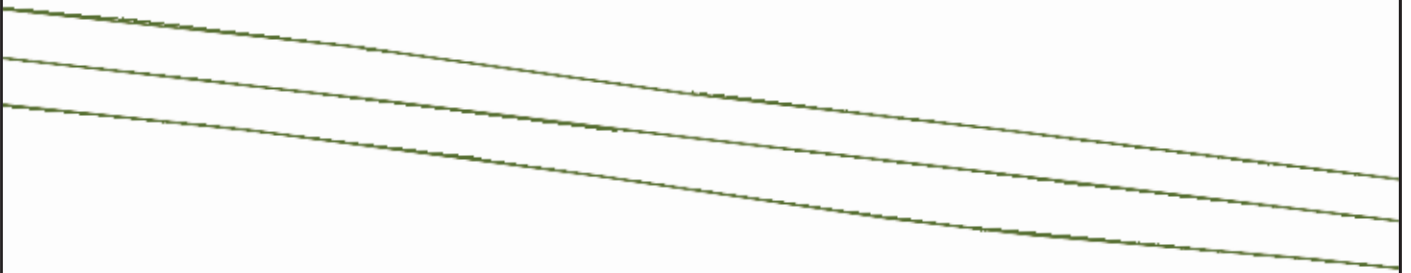
2



BELT LOOP



3

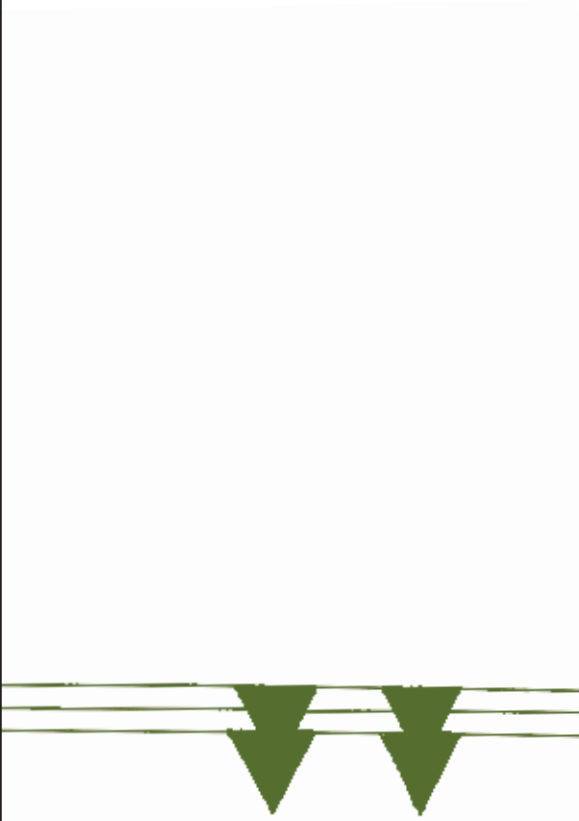


4

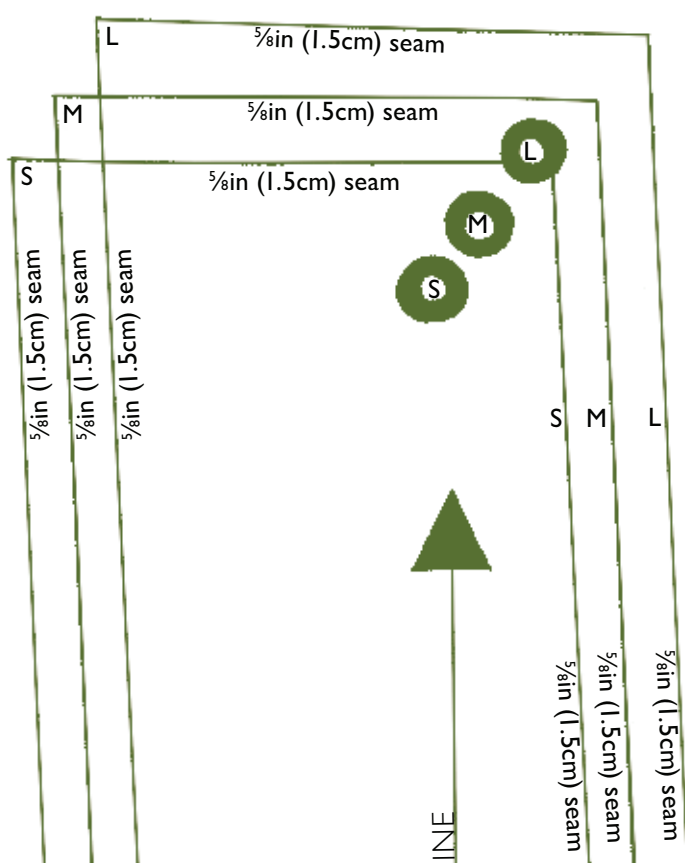




6



JOIN PIECE 20A TO PIECE 20B ALONG







# ALIGNING TRIANGLES





users  
back  
main fabric

S  
M  
L

L  
M  
S

L  
M  
S

L  
M  
S

L  
M  
S

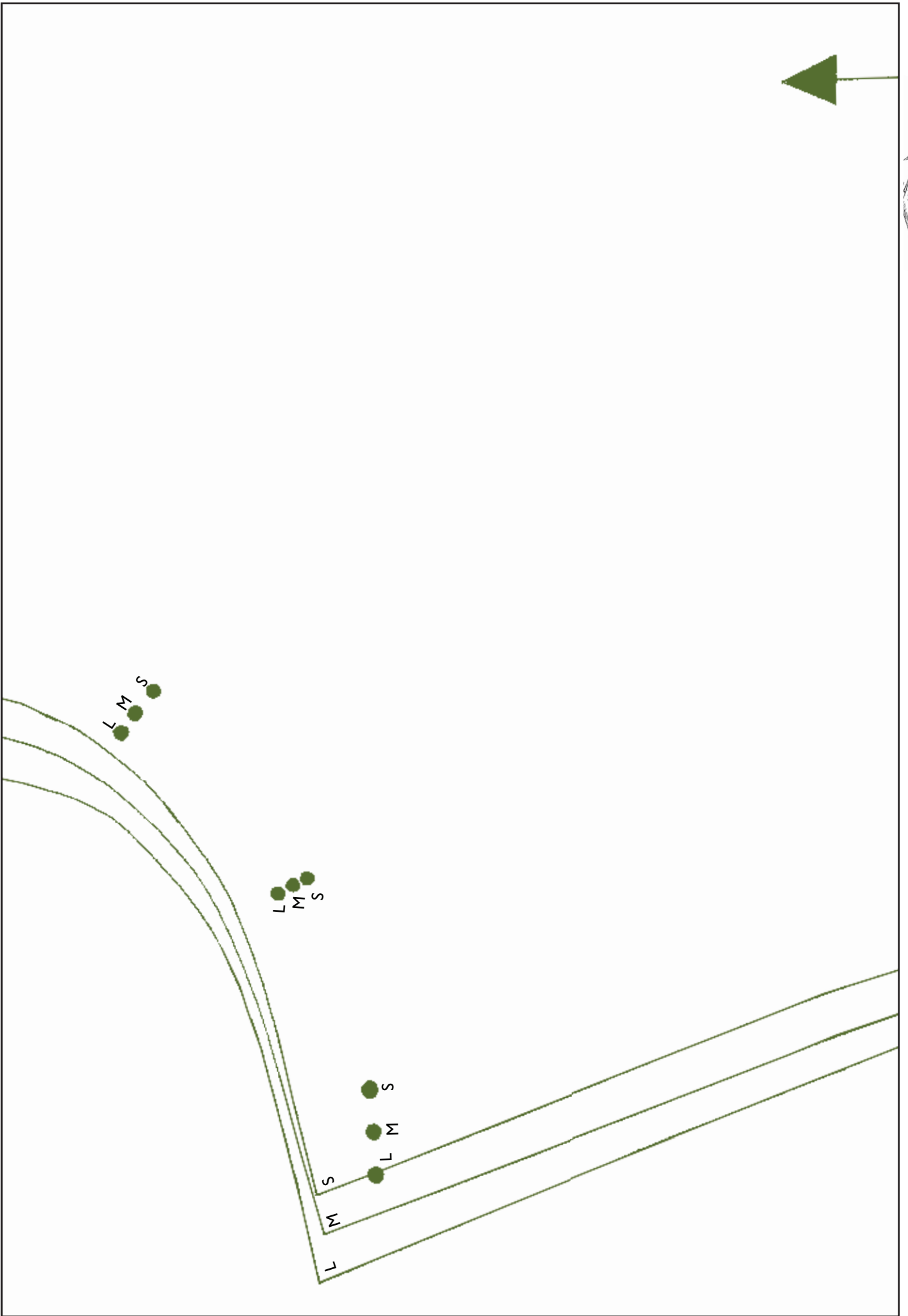
L  
M  
L  
S  
M  
S

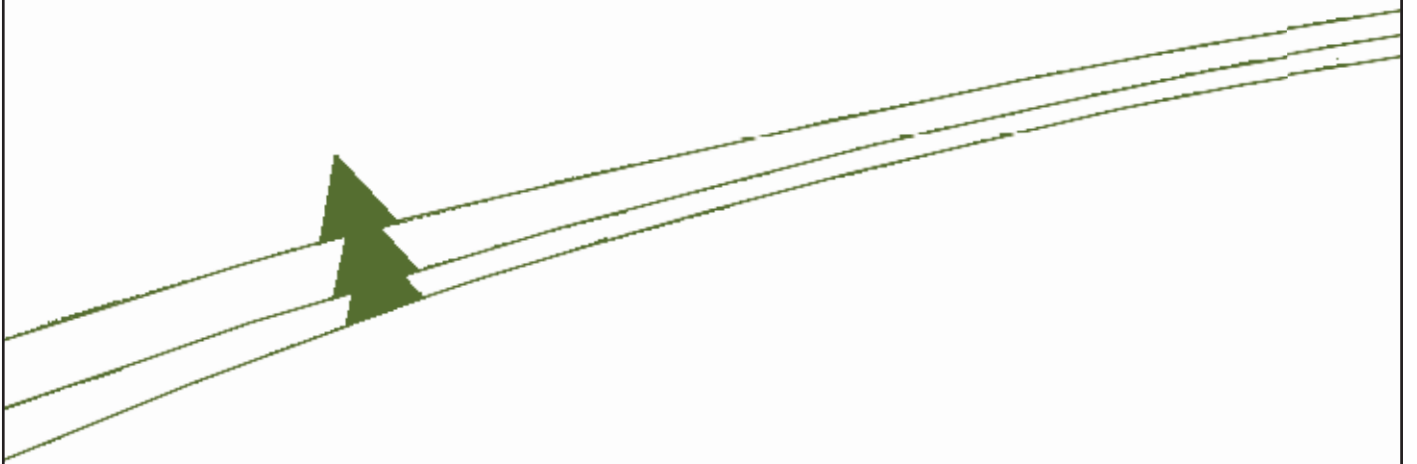


trousers  
back

Cut 2 in main fabric







GRAIN LINE



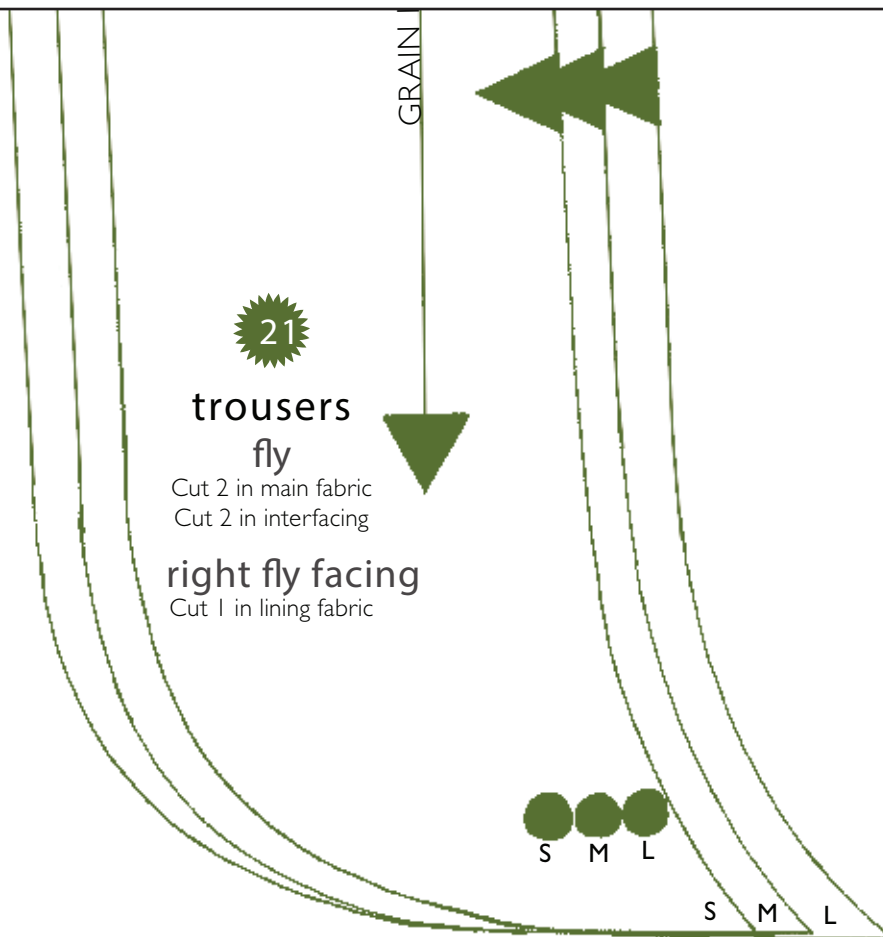
1cm seam



DOTTED RULE, ALIGNING TRIANGLES



5/8 in (1.6 cm)



JOIN PIECE 20A TO PIECE 20B ALONG DOTTED RULE, ALIG





trousers  
back

Cut 2 in

2in (5cm) hem



