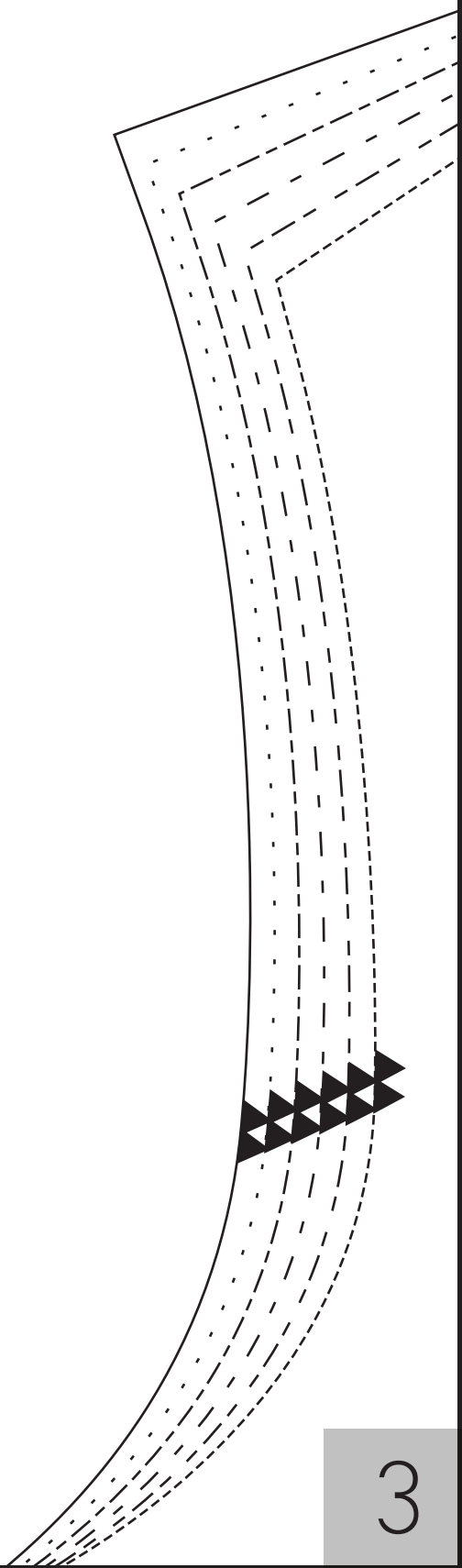


1

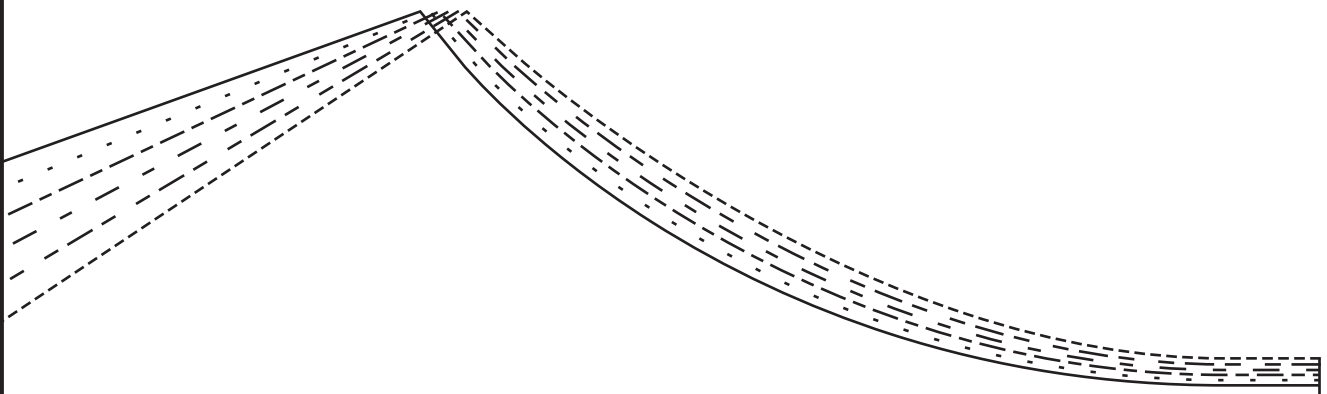
2



2



3



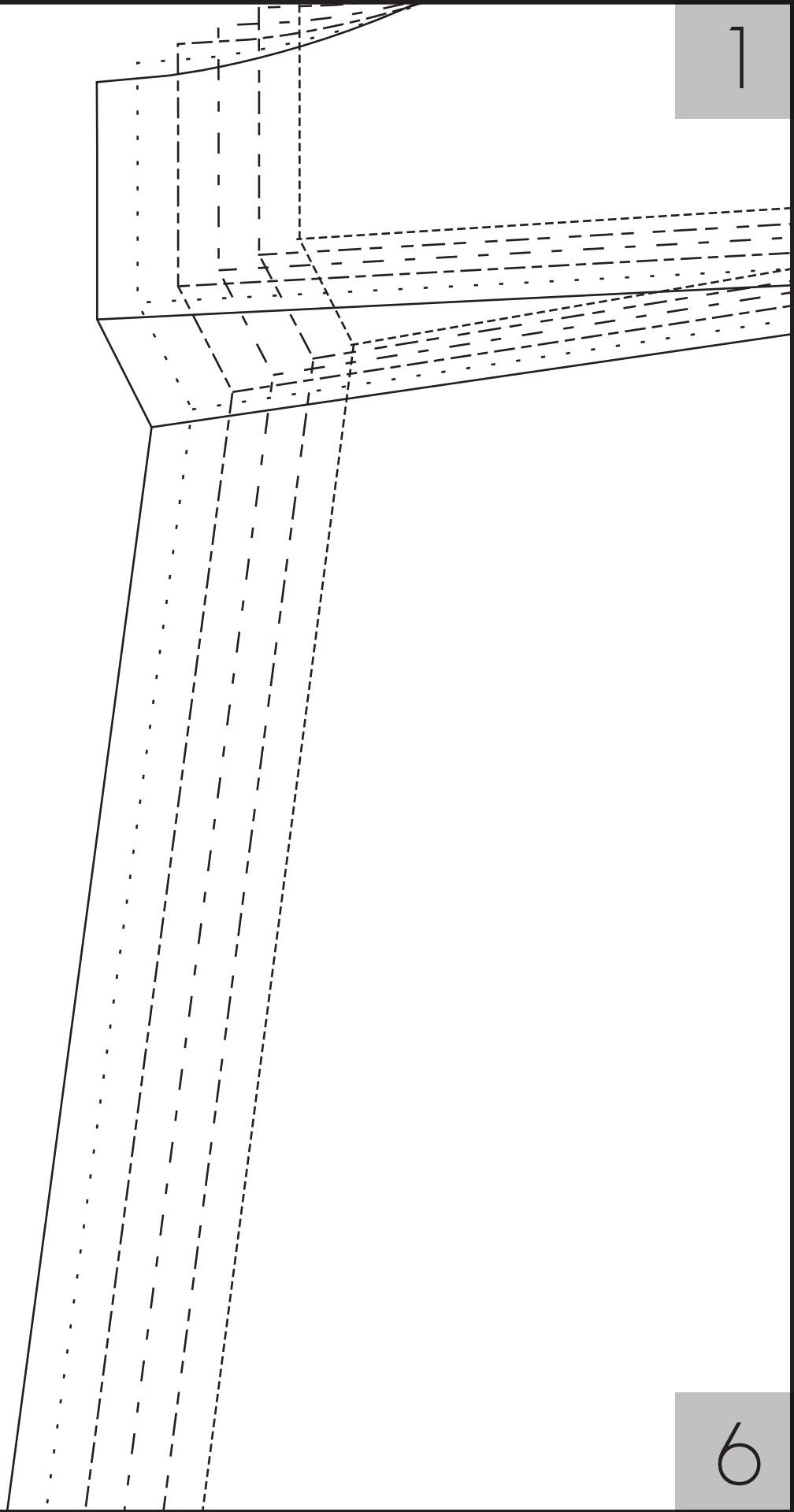
4

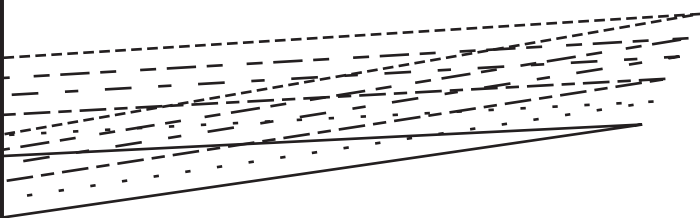
CUT DRESS  
CE  
N FOLD



5







DARLING SHIFTDRESS  
FRONT  
CUT ONE ON FOLD



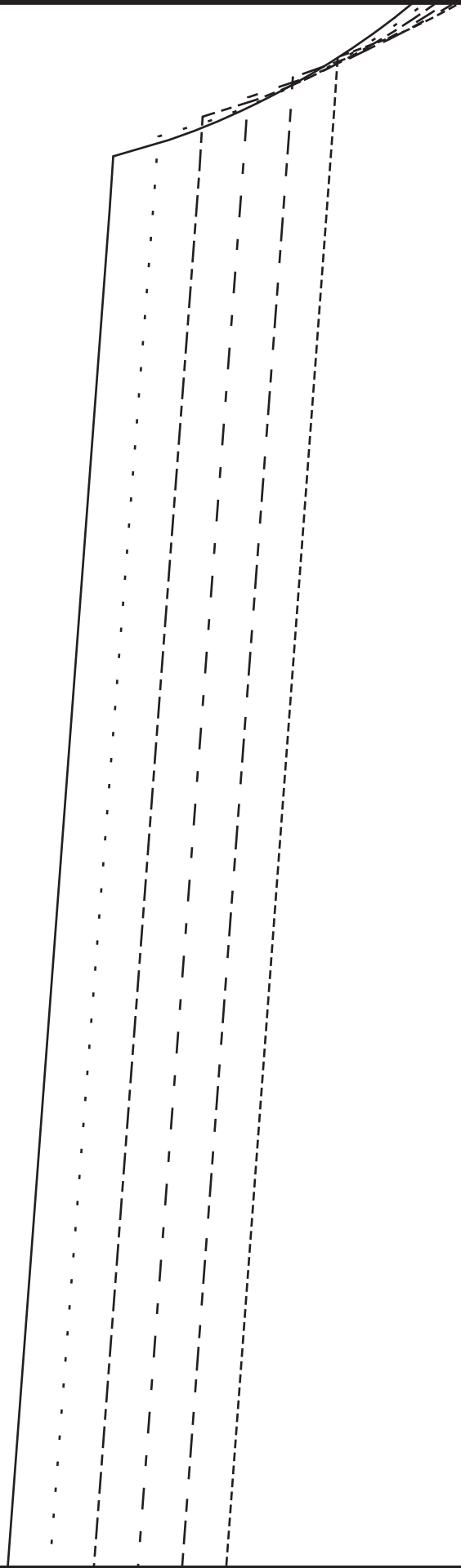
2

3

FOLD



∞







DARLING SHIFT DRESS  
BACK  
CUT TWO MIRRORED

DARLING SHIP  
FLOUNCE  
CUT TWO O

Handwriting practice lines consisting of a solid top line, a dashed middle line, and a solid bottom line.

SHORTEN

OR LENGTHEN ALONG THIS LINE

---

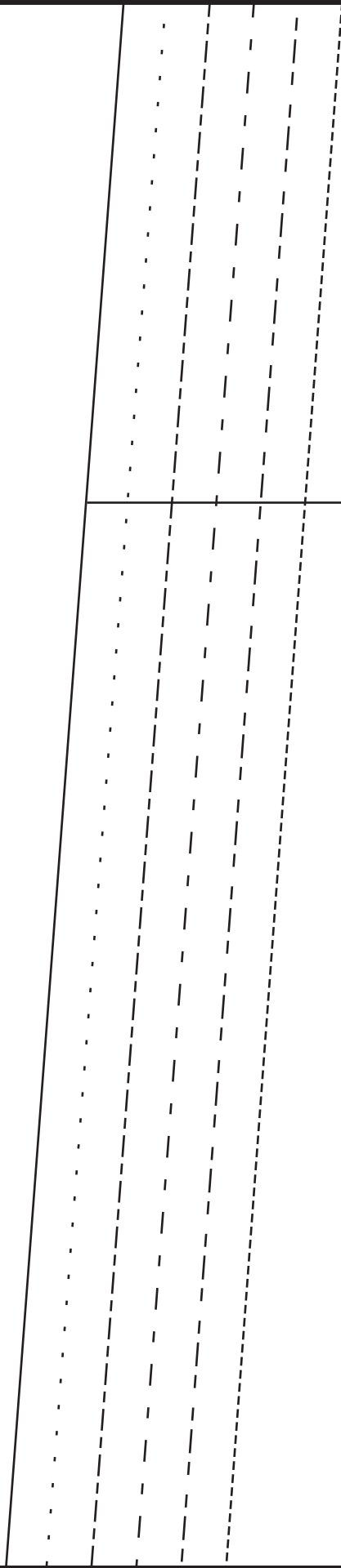
7

8

SHORTEN

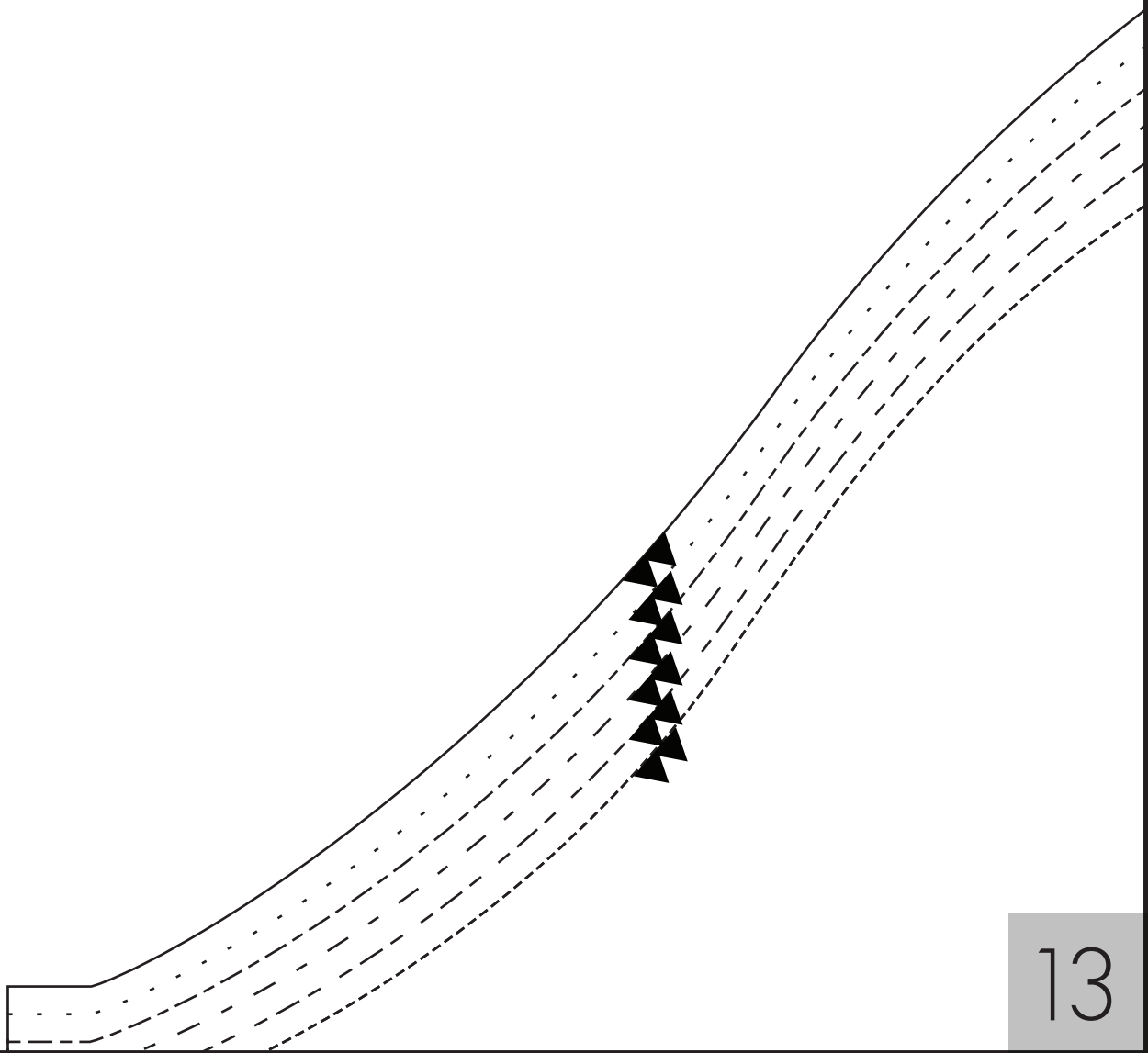
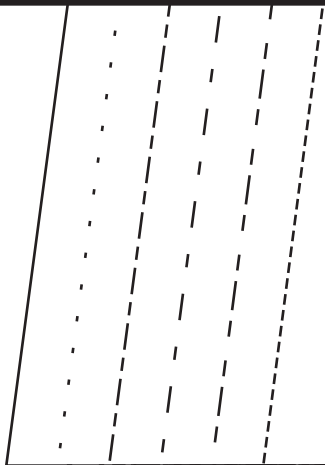
11

12



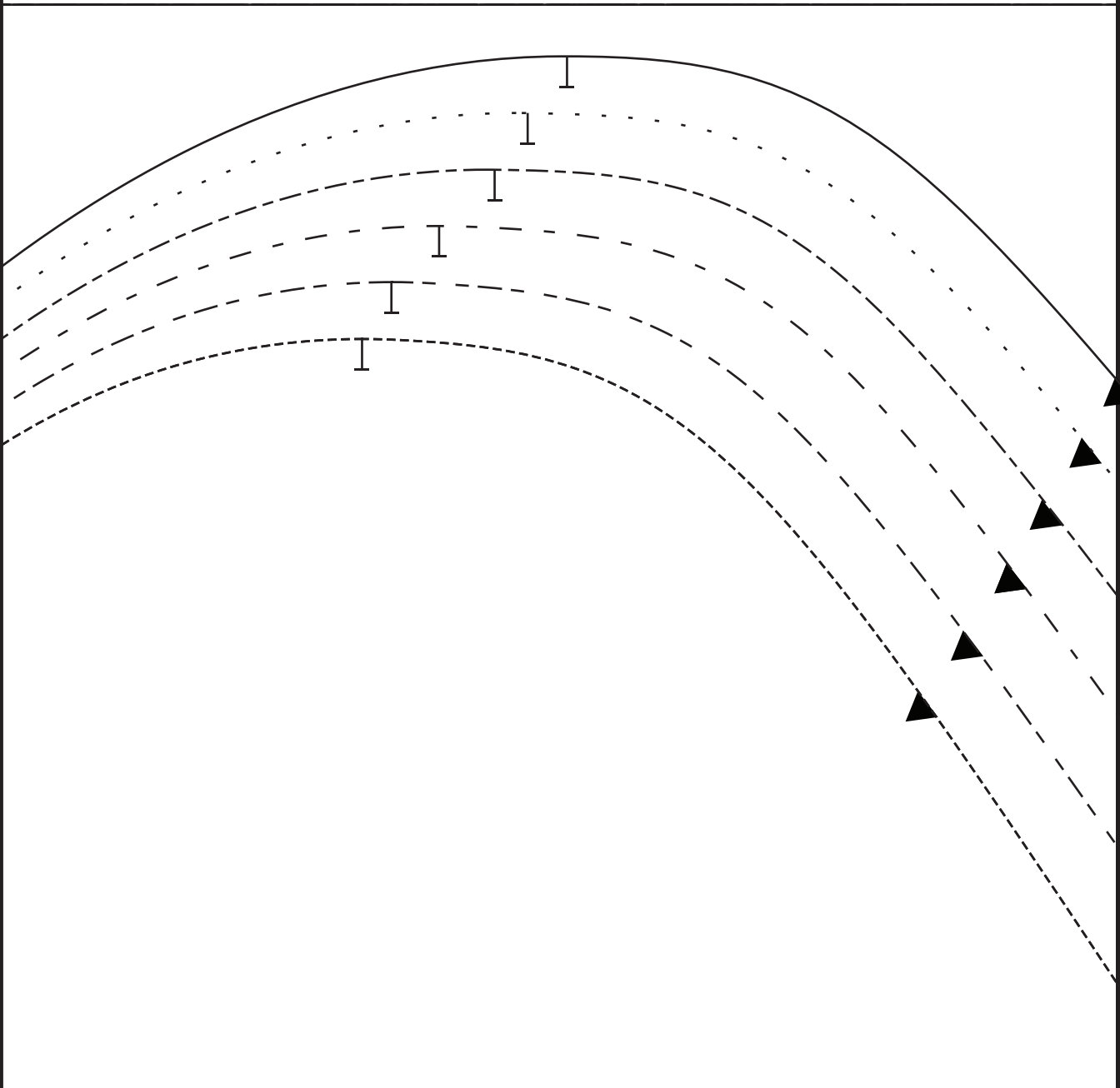
OR LENGTHEN ALONG THIS LINE

---



10

11



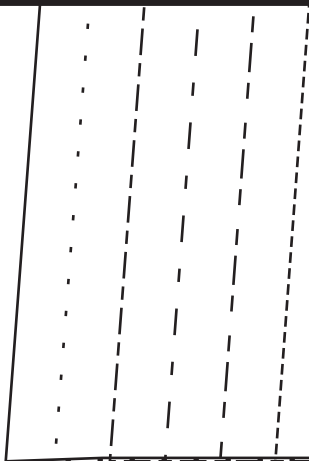
13

14



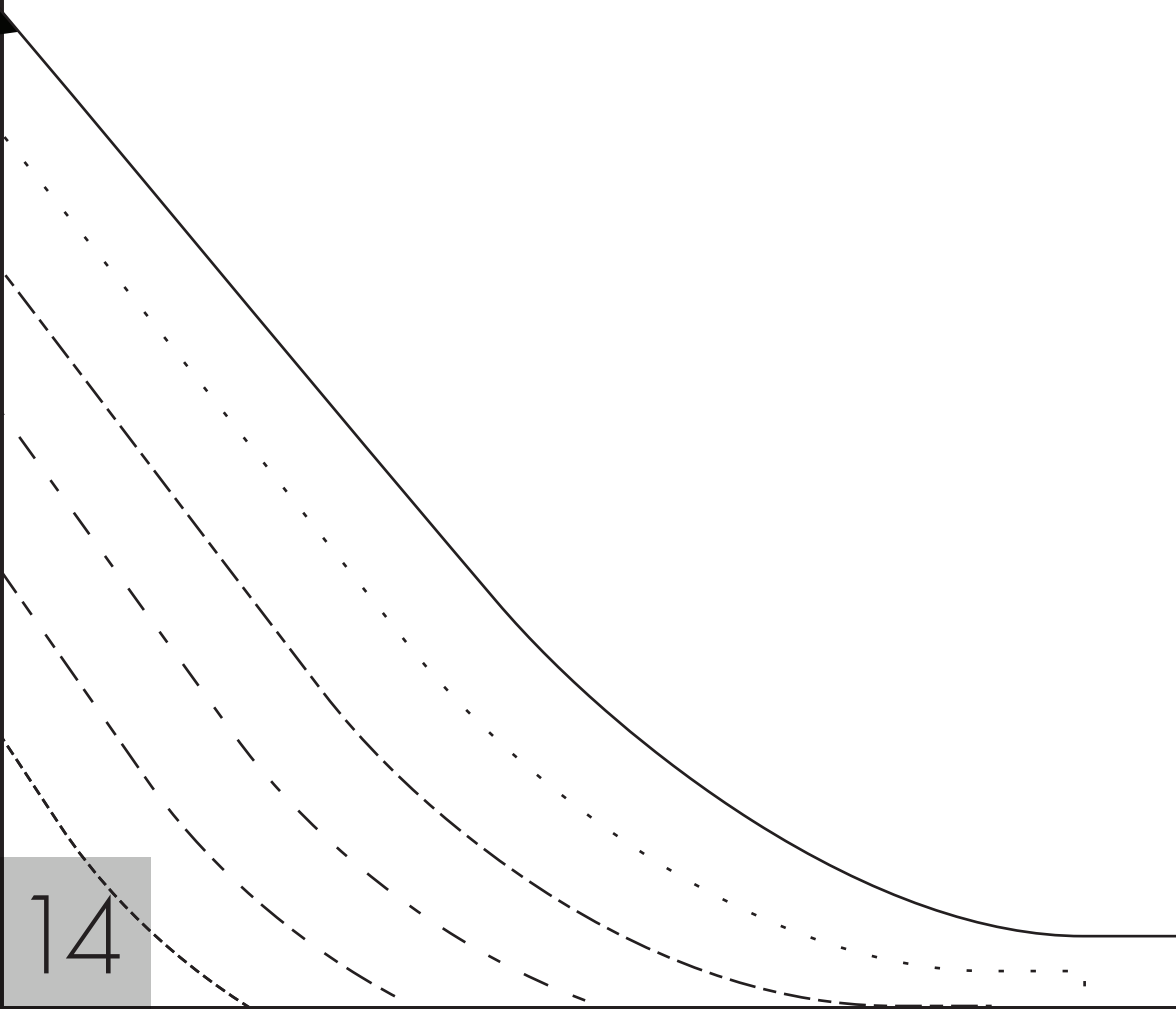
11

12

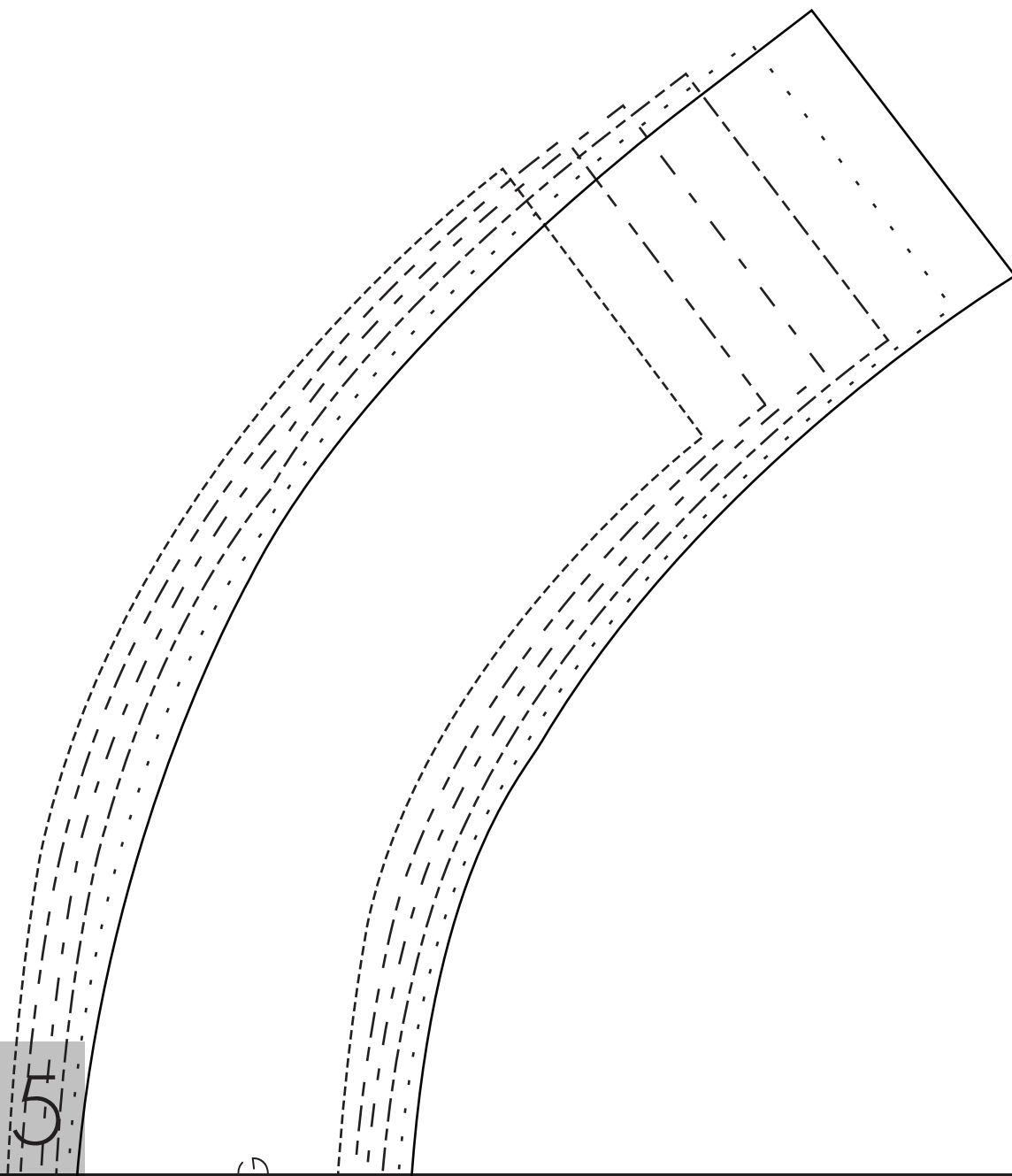


14

15



12



15

SHO

DARLING SHIFT DRESS  
SLEEVE  
CUT TWO MIRRORED

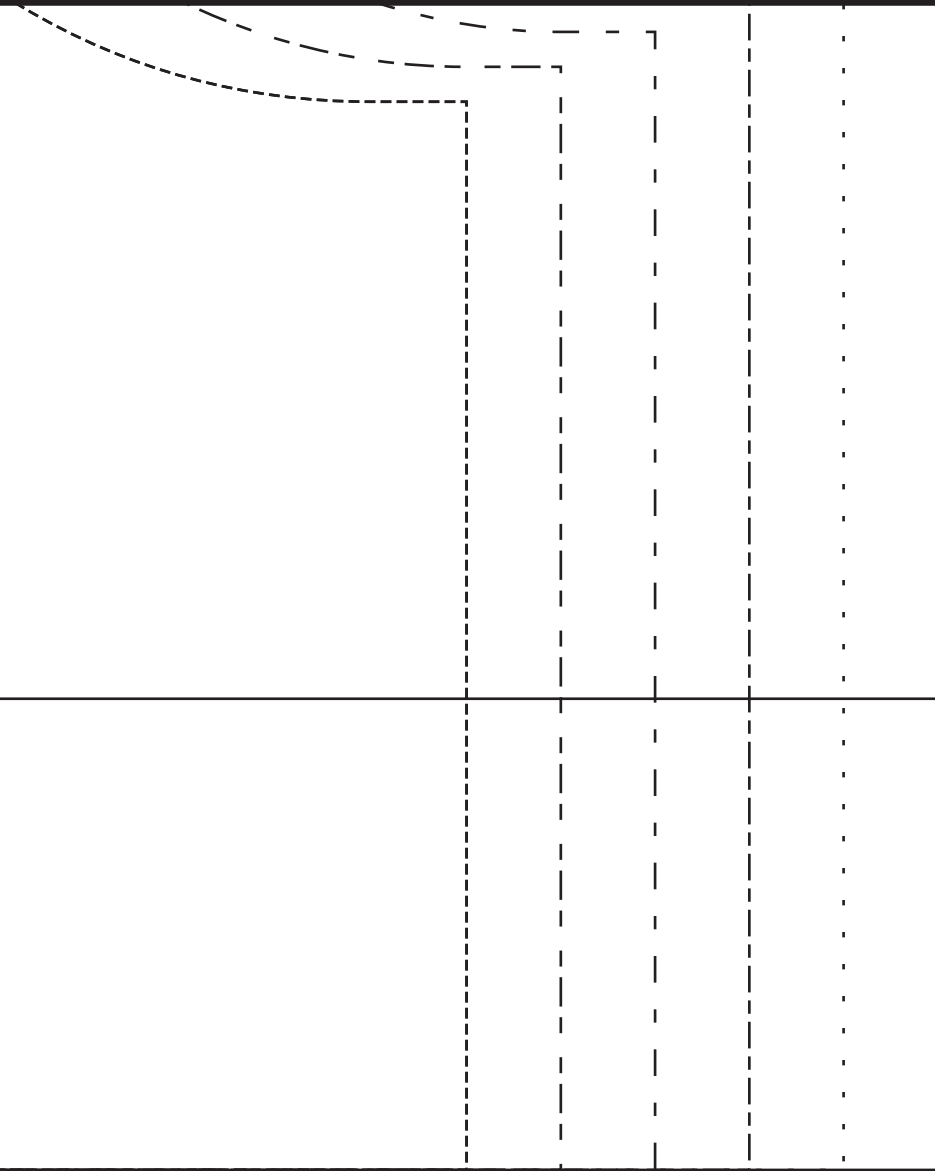


SHORTEN OR LENGTHEN ALONG THIS LINE

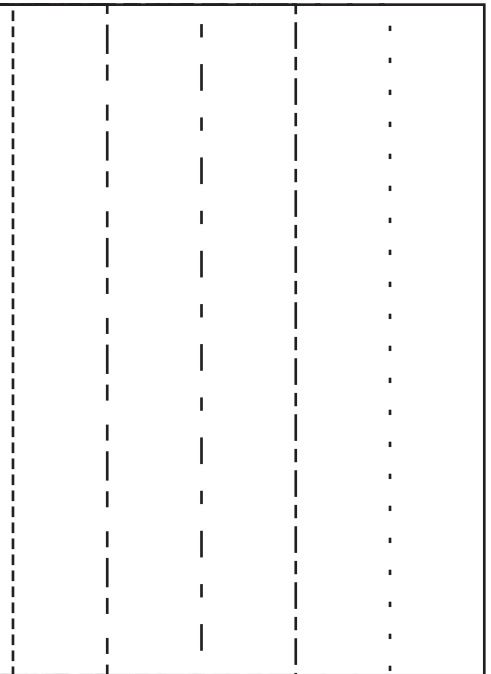
---

DARLING SHIFT DRESS  
CUFF  
CUT TWO

14



15



DARLING SHIFT DRESS  
FACING  
CUT ONE ON FOLD  
+ ONE ON FOLD INTERFACING

FOLD

Four horizontal dashed lines for handwriting practice, consisting of a solid top line, a dashed middle line, a solid bottom line, and a dotted baseline.

