

2



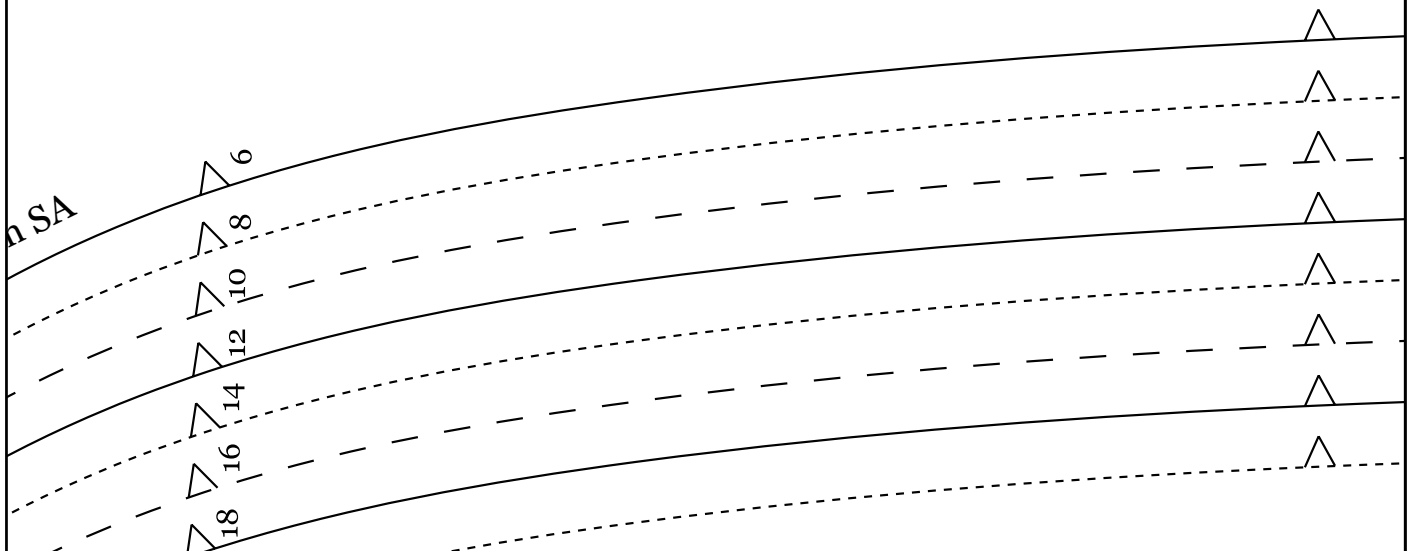
LS SHIRT DRESS  
CENTRE BACK  
CUT 1 ON FOLD

use 1.5cm

3



N FOLD



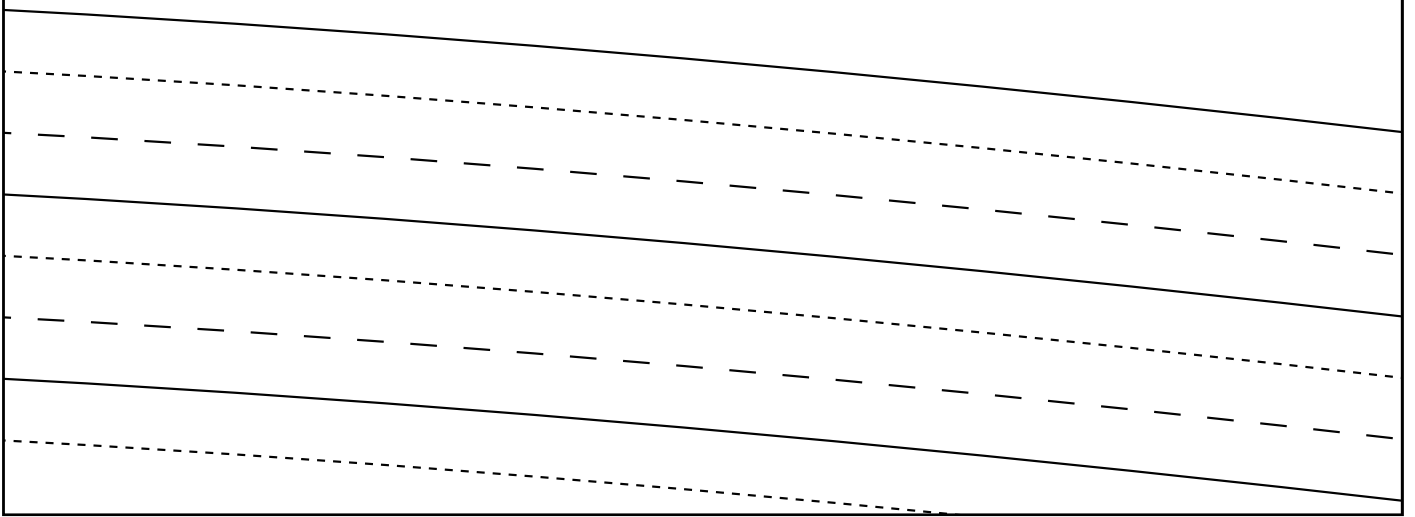
4



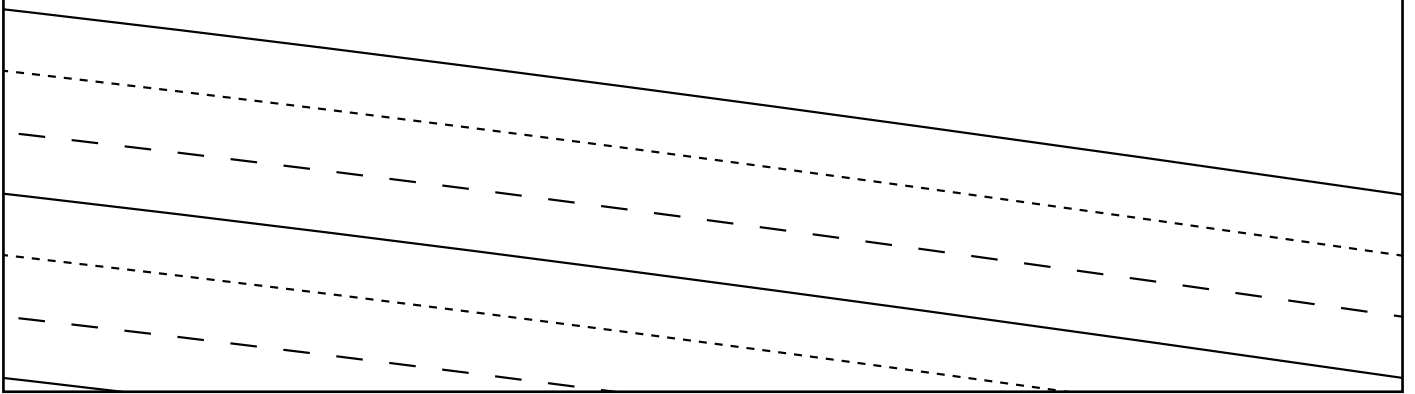
CUT ONE O



5



6



7



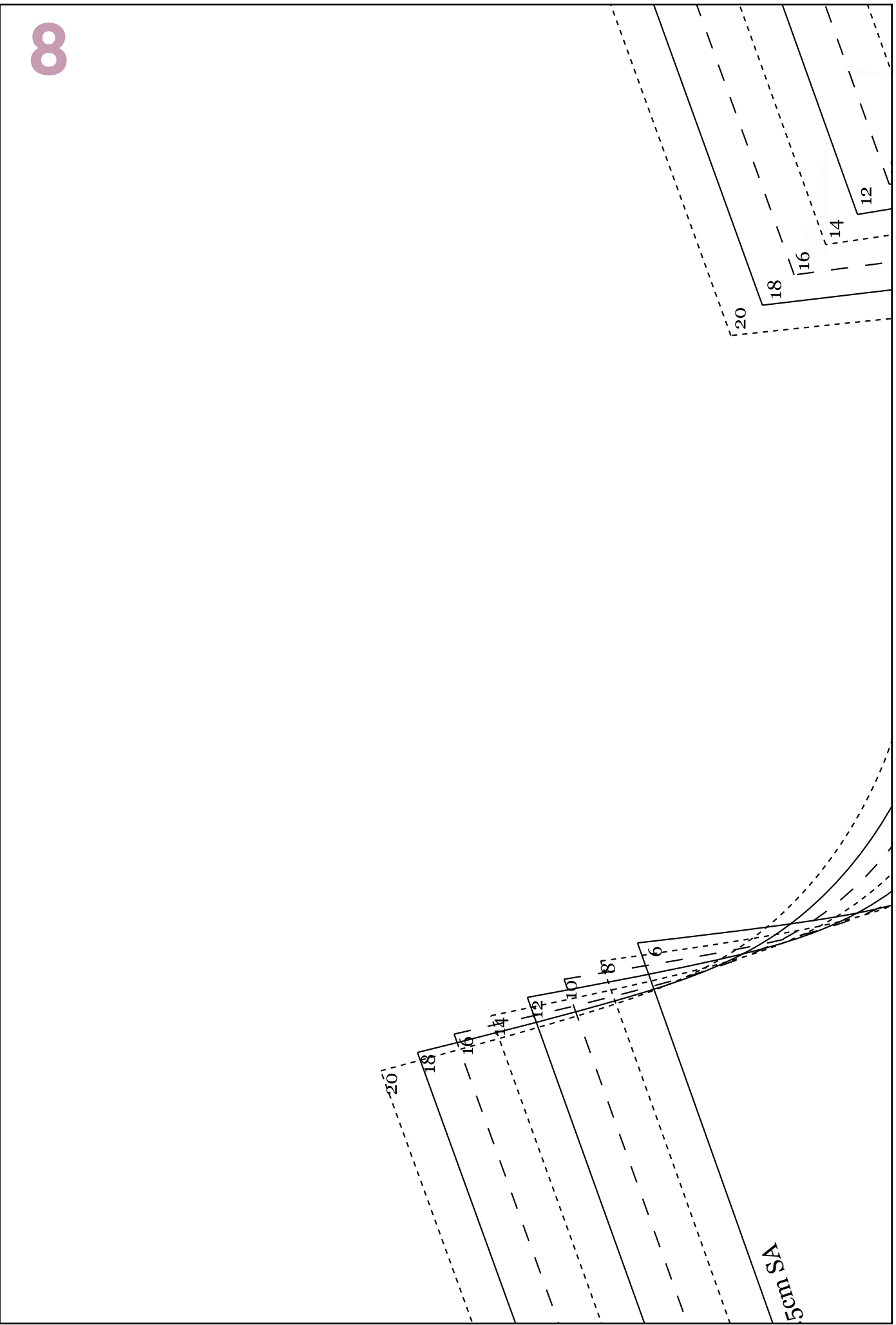
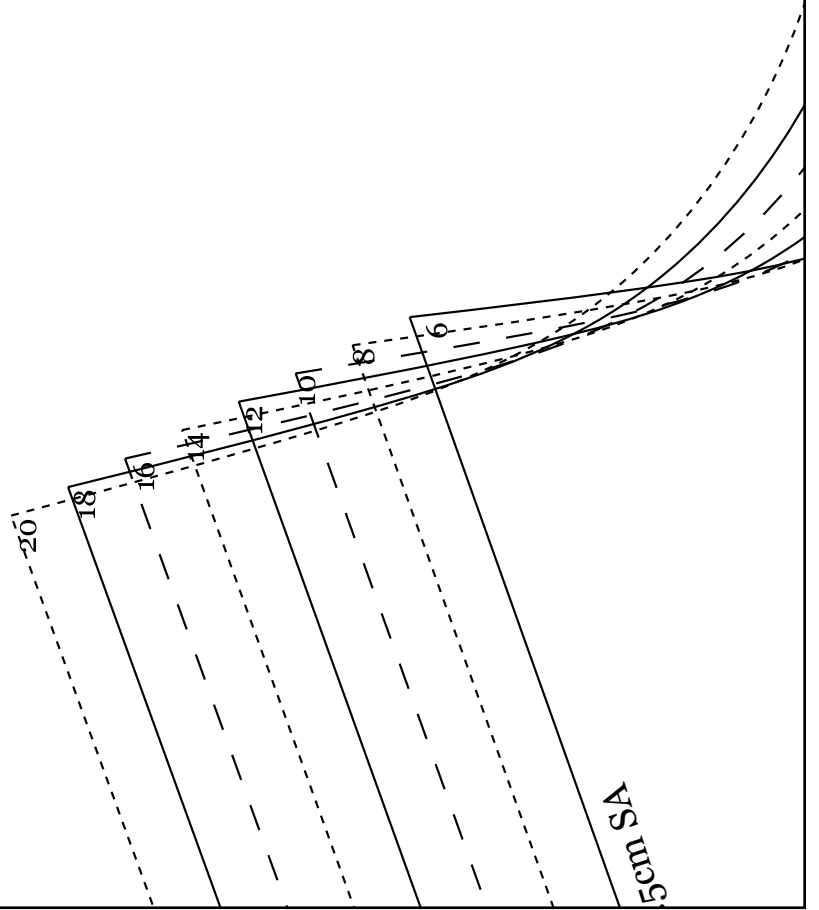
use 3cm hem

6

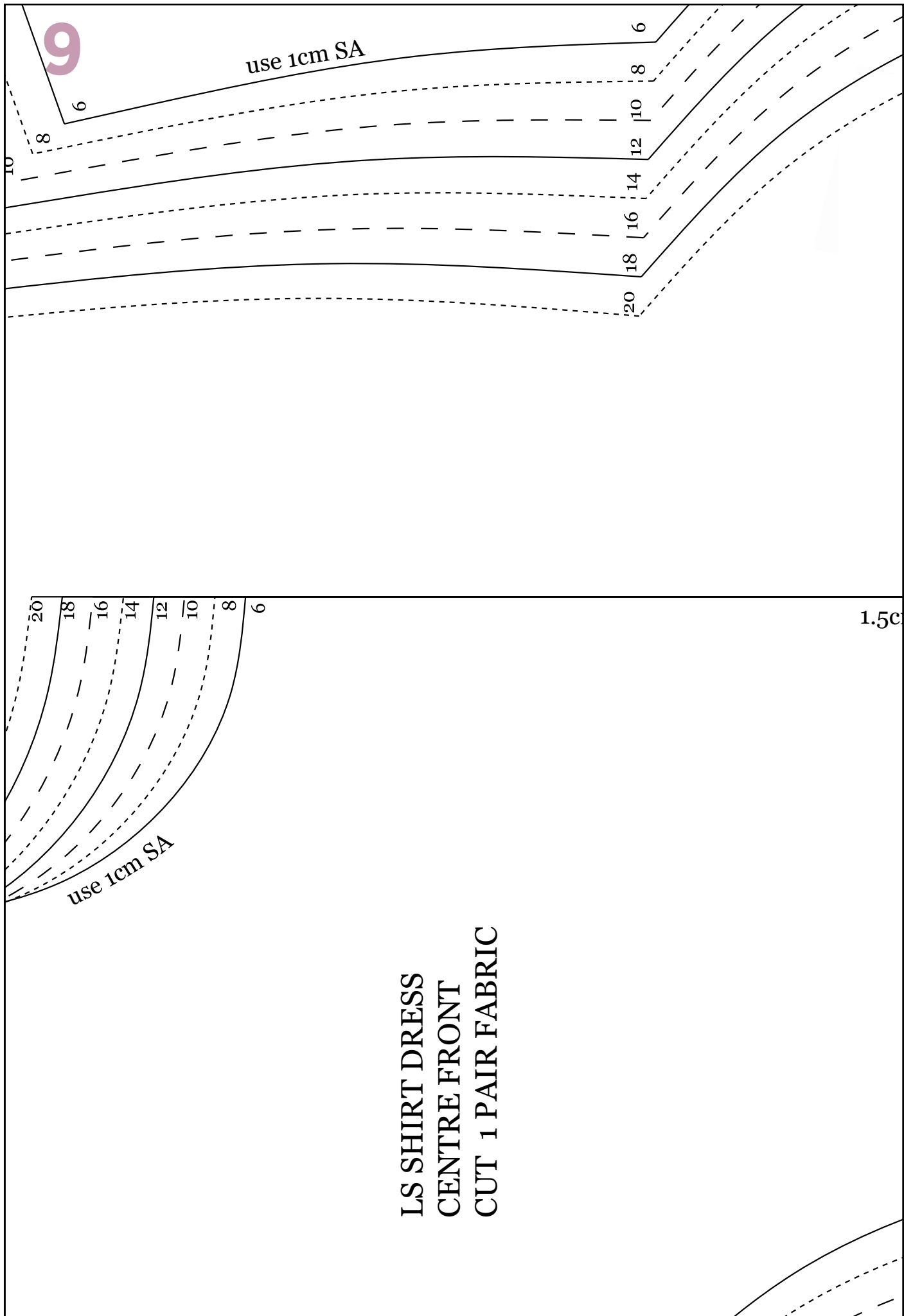
8

10





# LS SHIRT DRESS CENTRE FRONT CUT 1 PAIR FABRIC

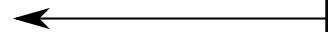


10

20



m seam allowance



1.5cm seam allowance

6

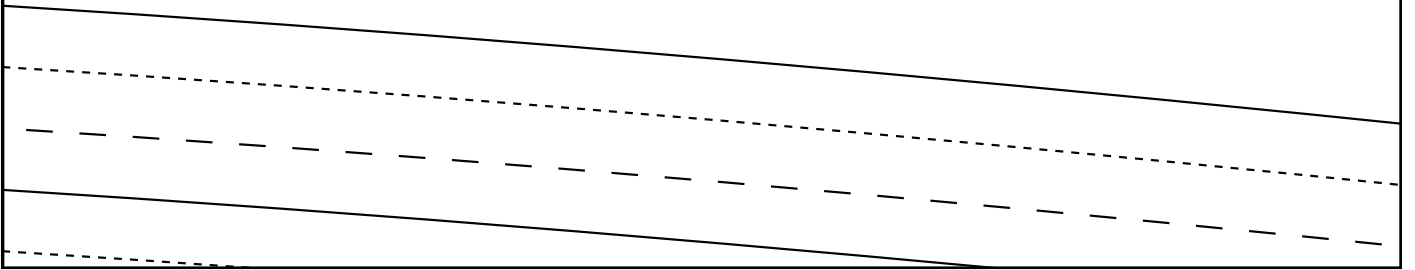
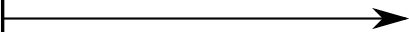
8

10

12



Straight grain



13

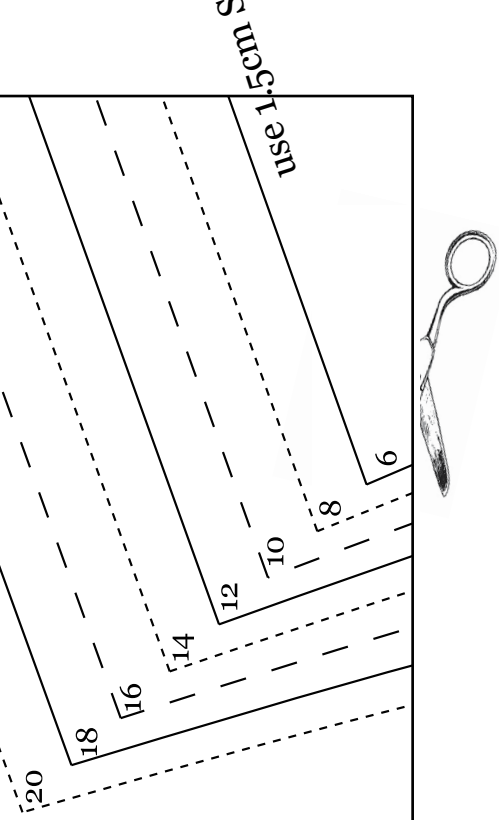
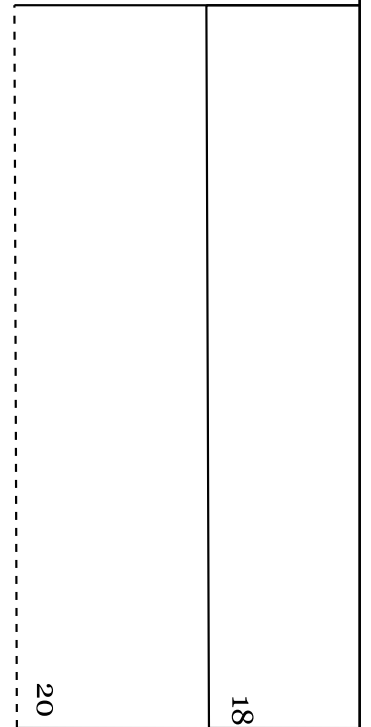


14

12  
14  
16  
18  
20

use 3cm hem







16

use 1cm SA

6

8

10

12

14

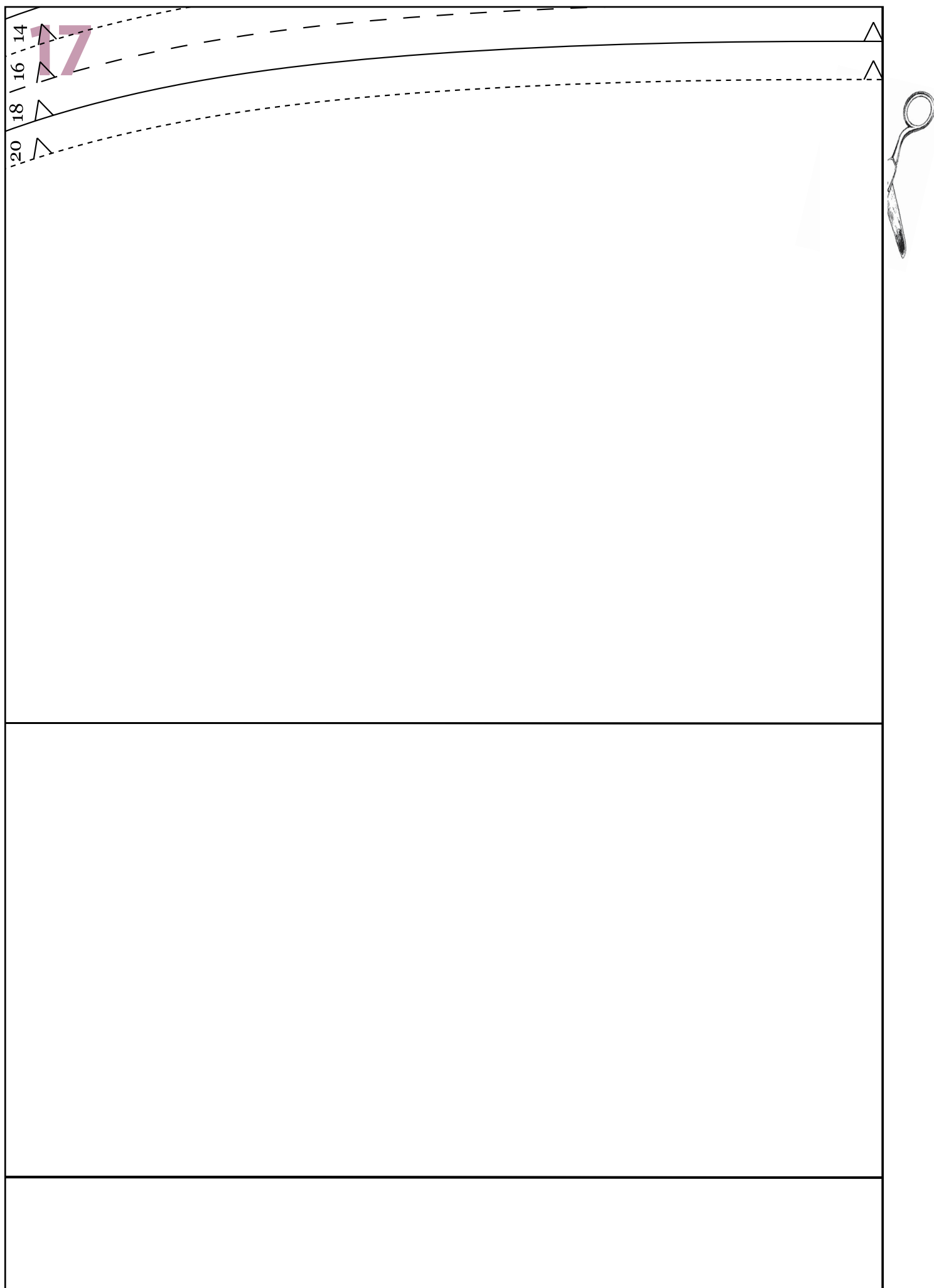
16

18

20



16	14	12	10	8	6
----	----	----	----	---	---







20



LS SHIRT DRESS  
BELT  
CUT 1 FABRIC  
use 1cm SA

JOIN

21

20 18 16 14 12 10 8 6





JOIN













