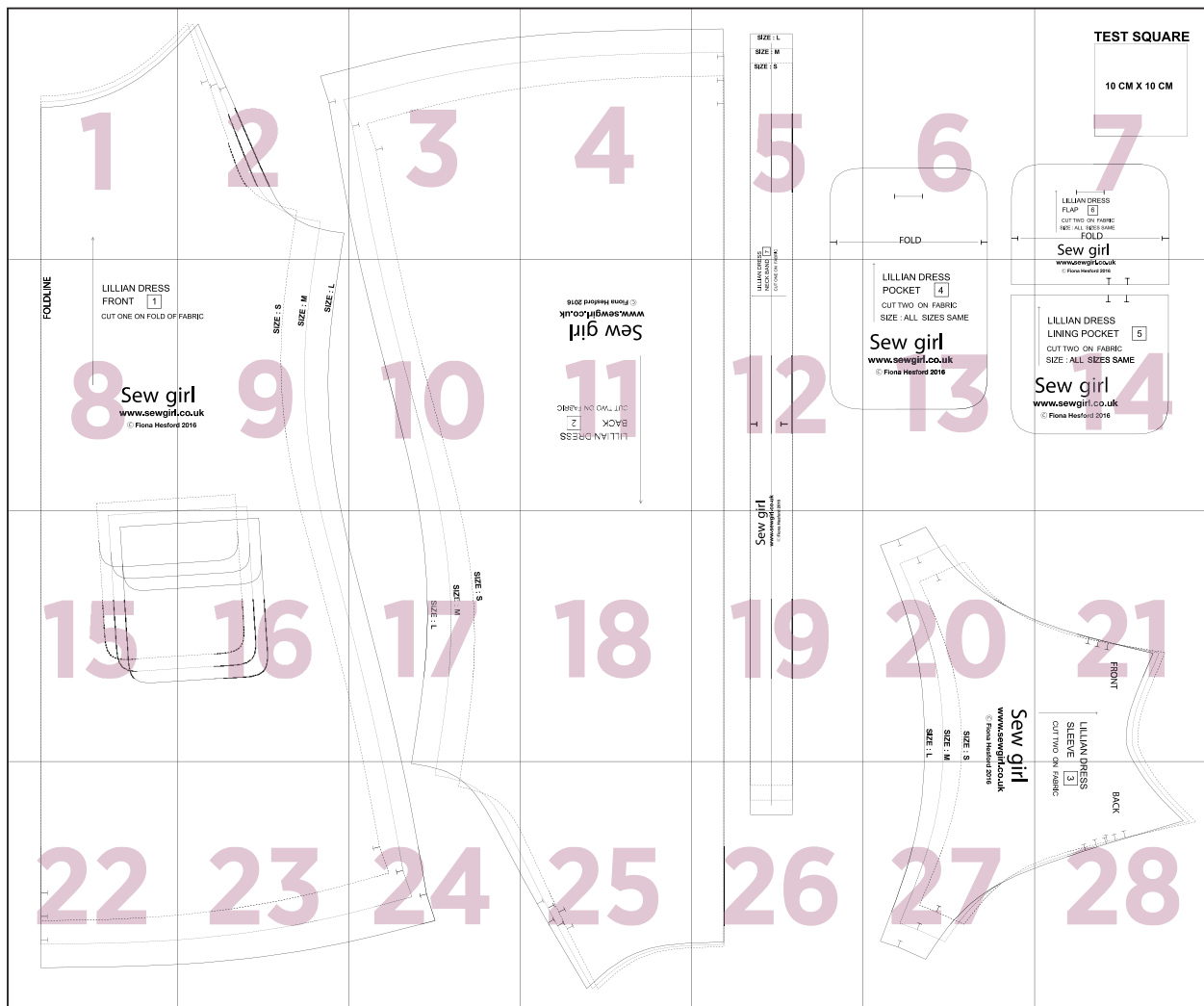
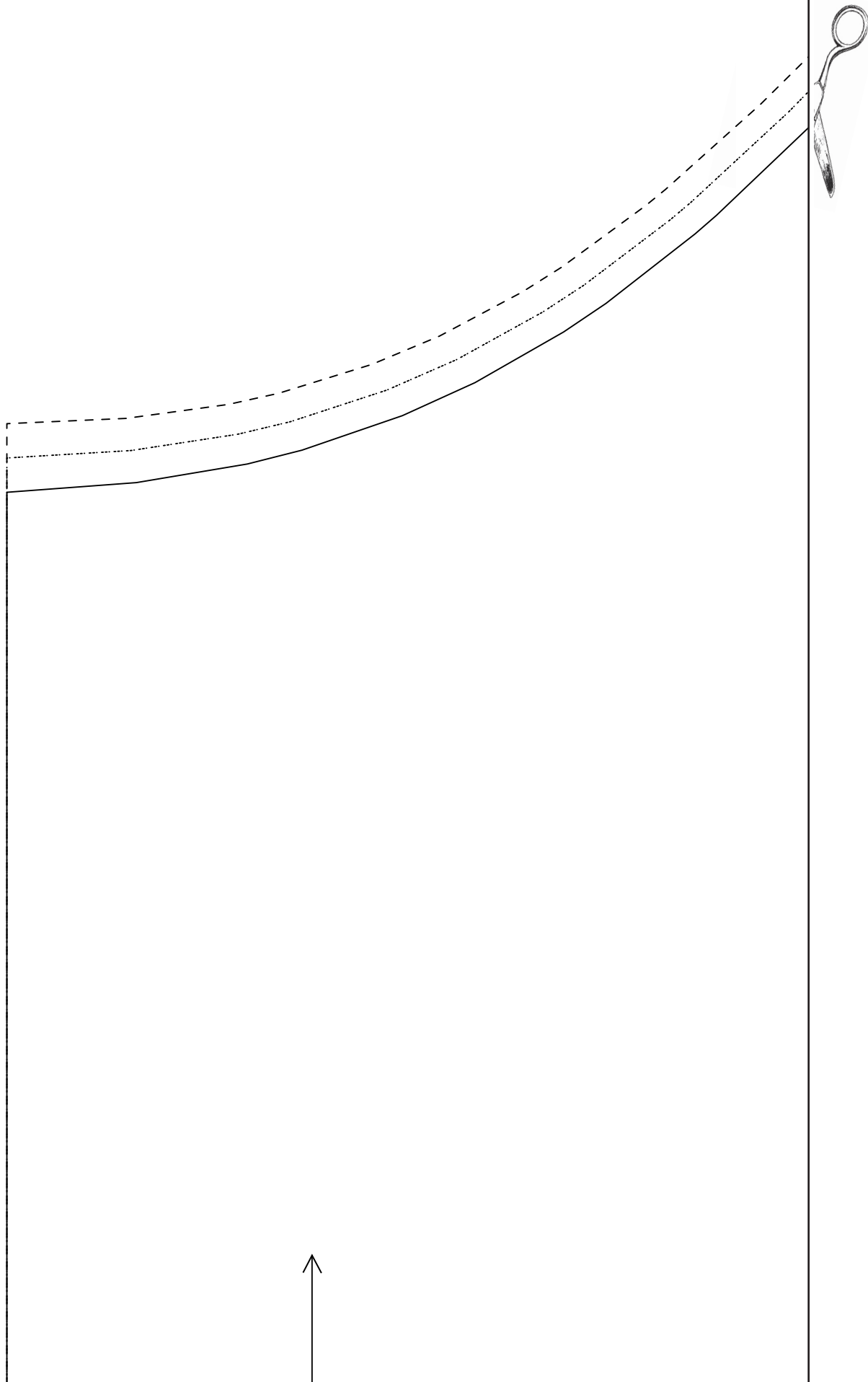


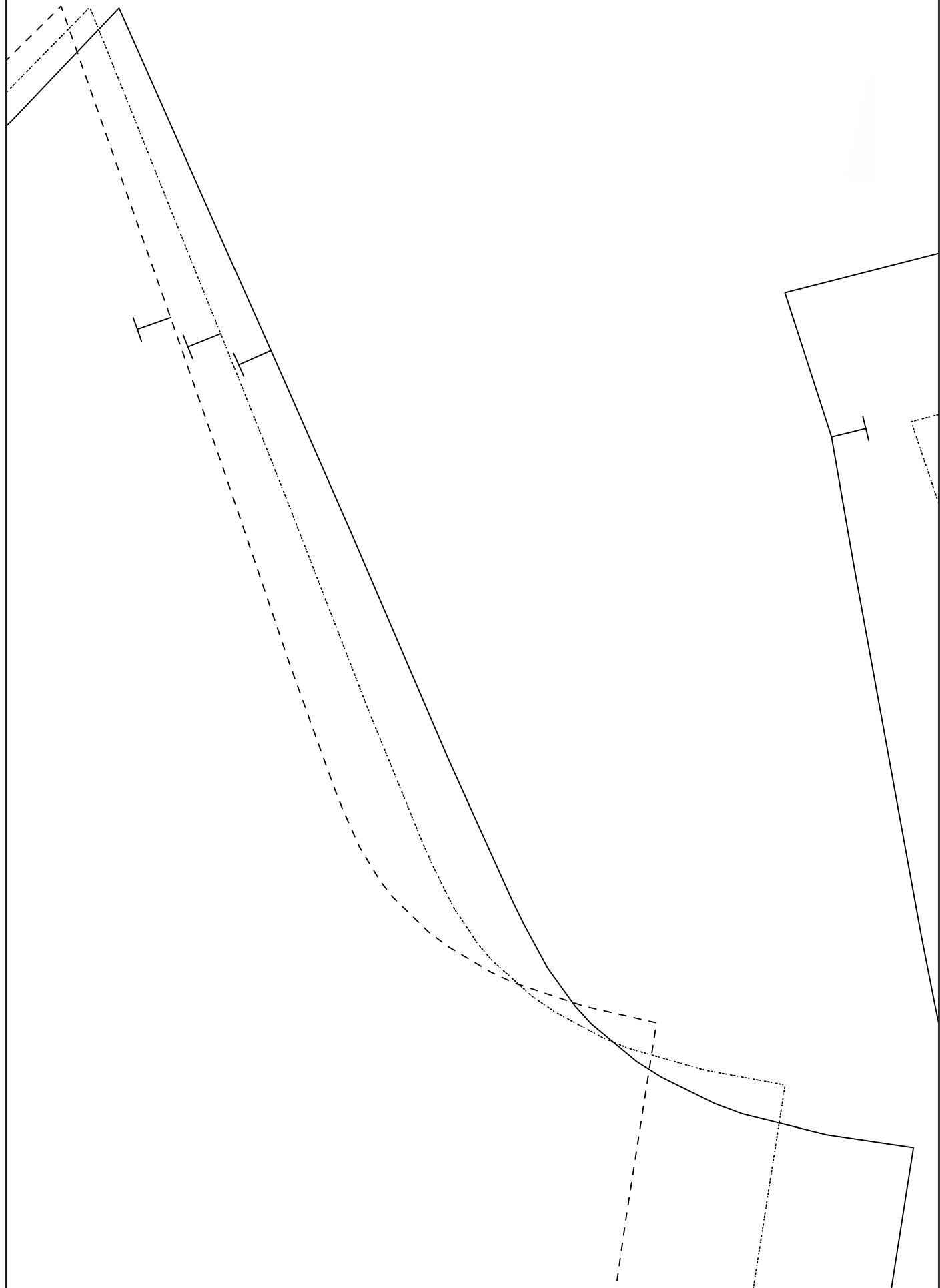
LILLIAN DRESS



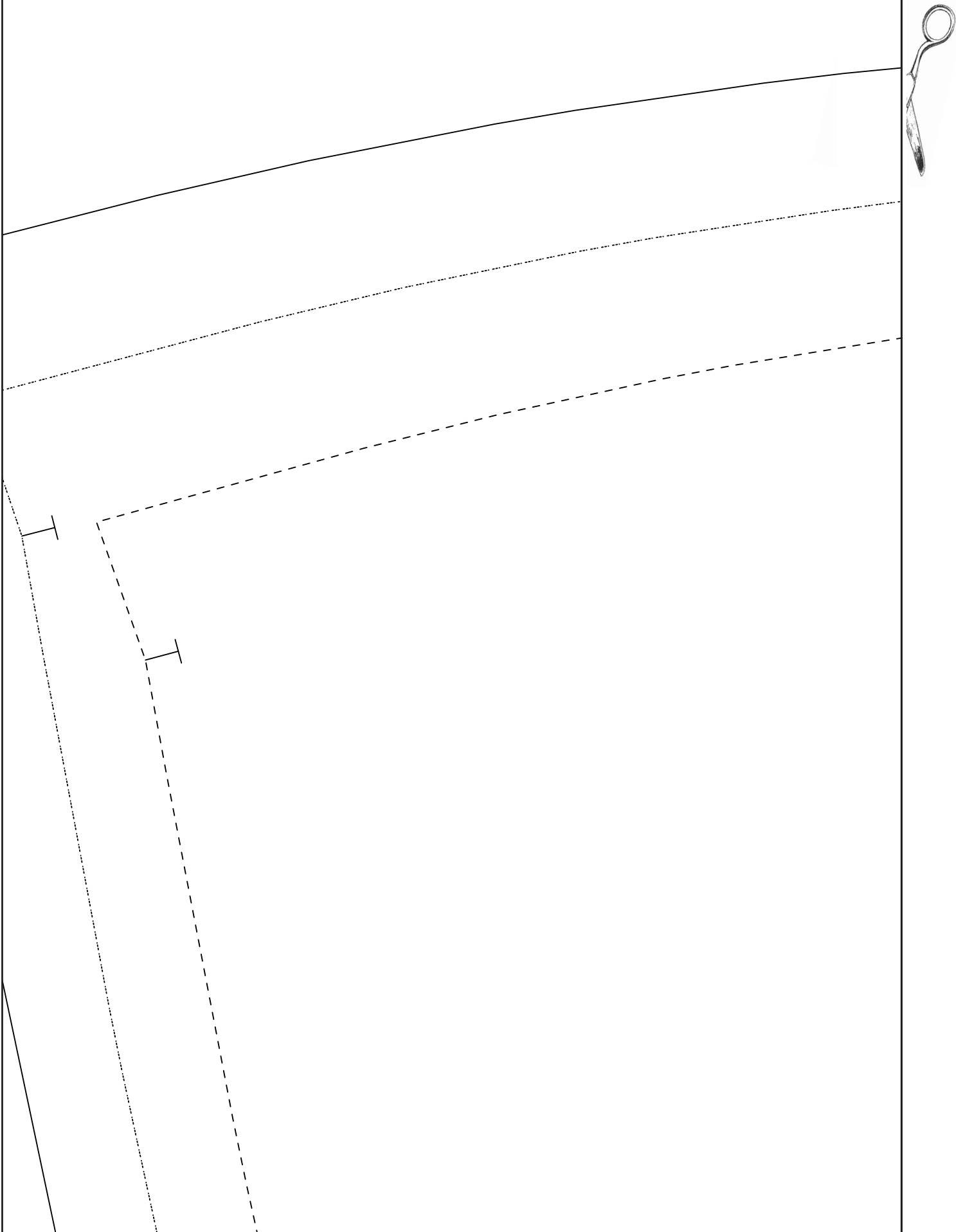
1



2



3



4

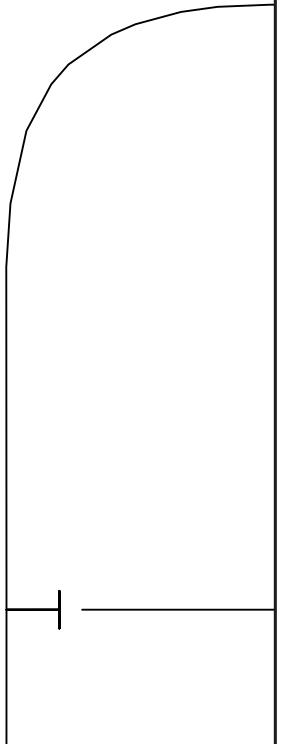


5

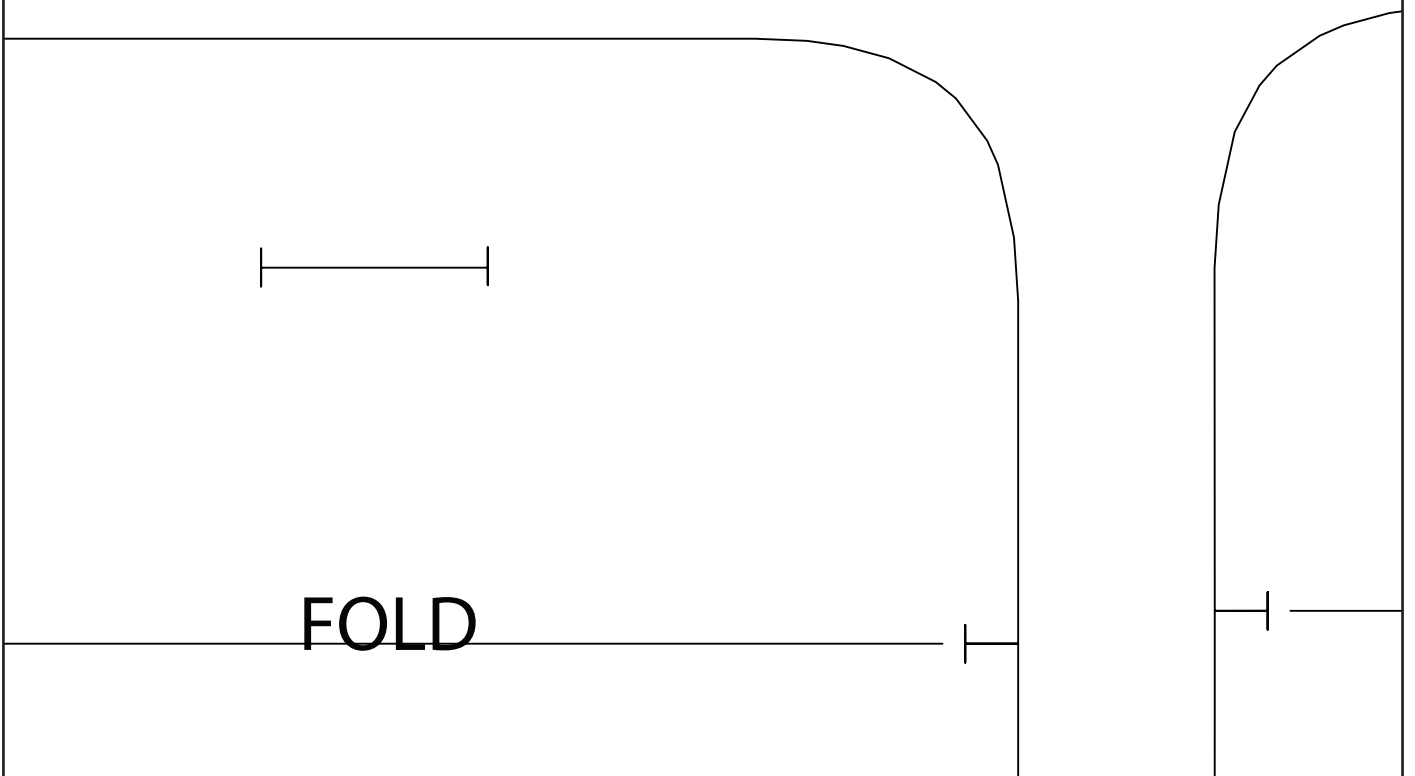


SIZE : L	
SIZE : M	
SIZE : S	
SS	BRIC

7



6



TEST SQUARE

10 CM X 10 CM

LILLIAN DRESS
FLAP 6
CUT TWO ON FABRIC
SIZE : ALL SIZES SAME
FOLD

Sew girl

FOLDLINE

LILLIAN DRESS

FRONT

1

CUT ONE ON FOLD OF



Sew girl

www.sewgirlmag.com

© Fiona Hesford

9

FABRIC

SIZE : S

SIZE : M

SIZE : L



irl

.co.uk

d 2016

10

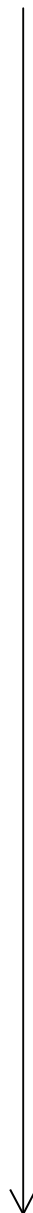


Sew girl

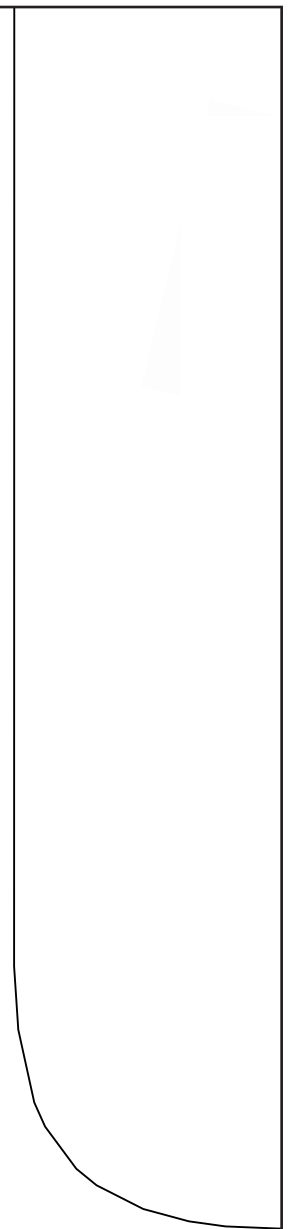
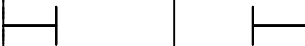
www.sewgirl.co.uk
© Fiona Hestford 2016



LILLIAN DRESS
BACK
2
CUT TWO ON FABRIC



LILLIAN DRESS
NECK BAND
CUT ONE ON FA



13

LILLIAN DRESS POCKET

4

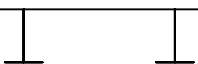
CUT TWO ON FABRIC

SIZE : ALL SIZES SAME

Sew girl
www.sewgirl.co.uk

© Fiona Hesford 2016





LILLIAN DRESS
LINING POCKET

5

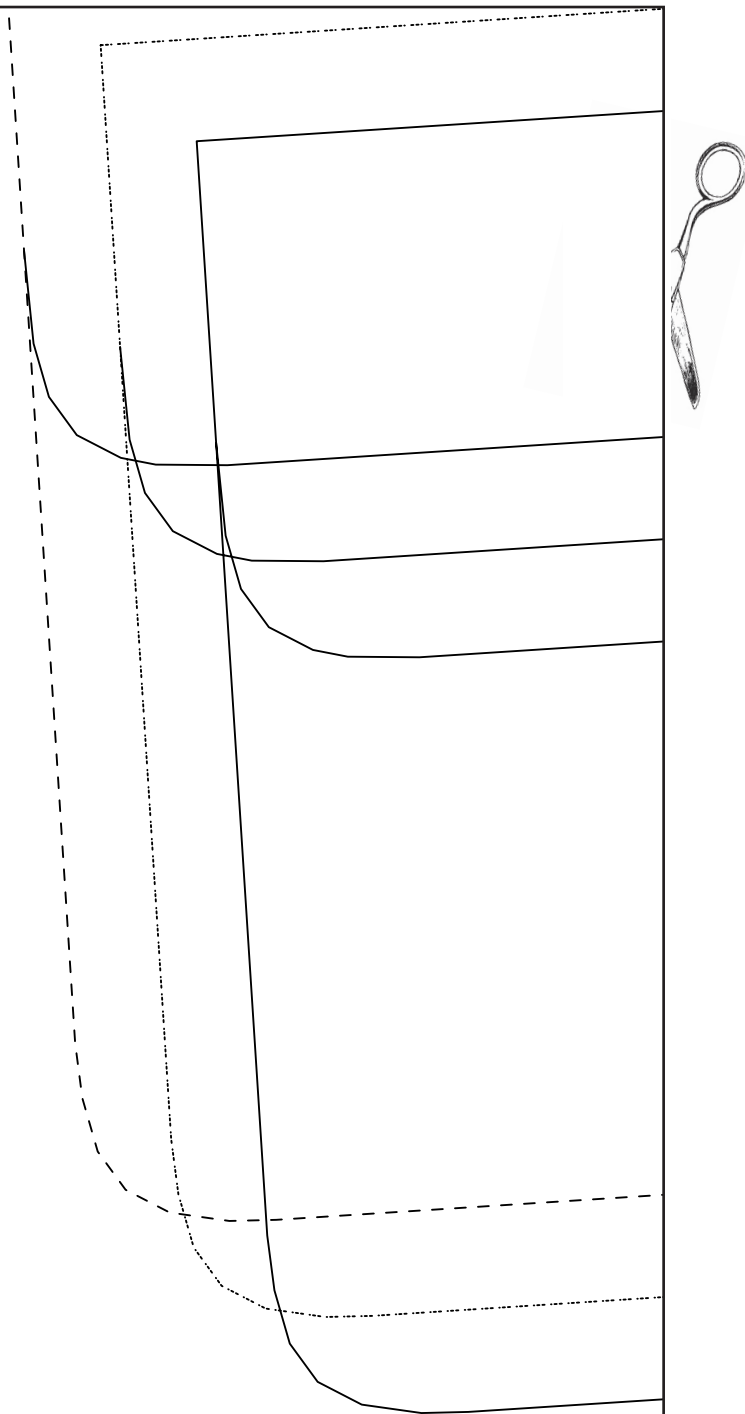
CUT TWO ON FABRIC
SIZE : ALL SIZES SAME

Sew girl

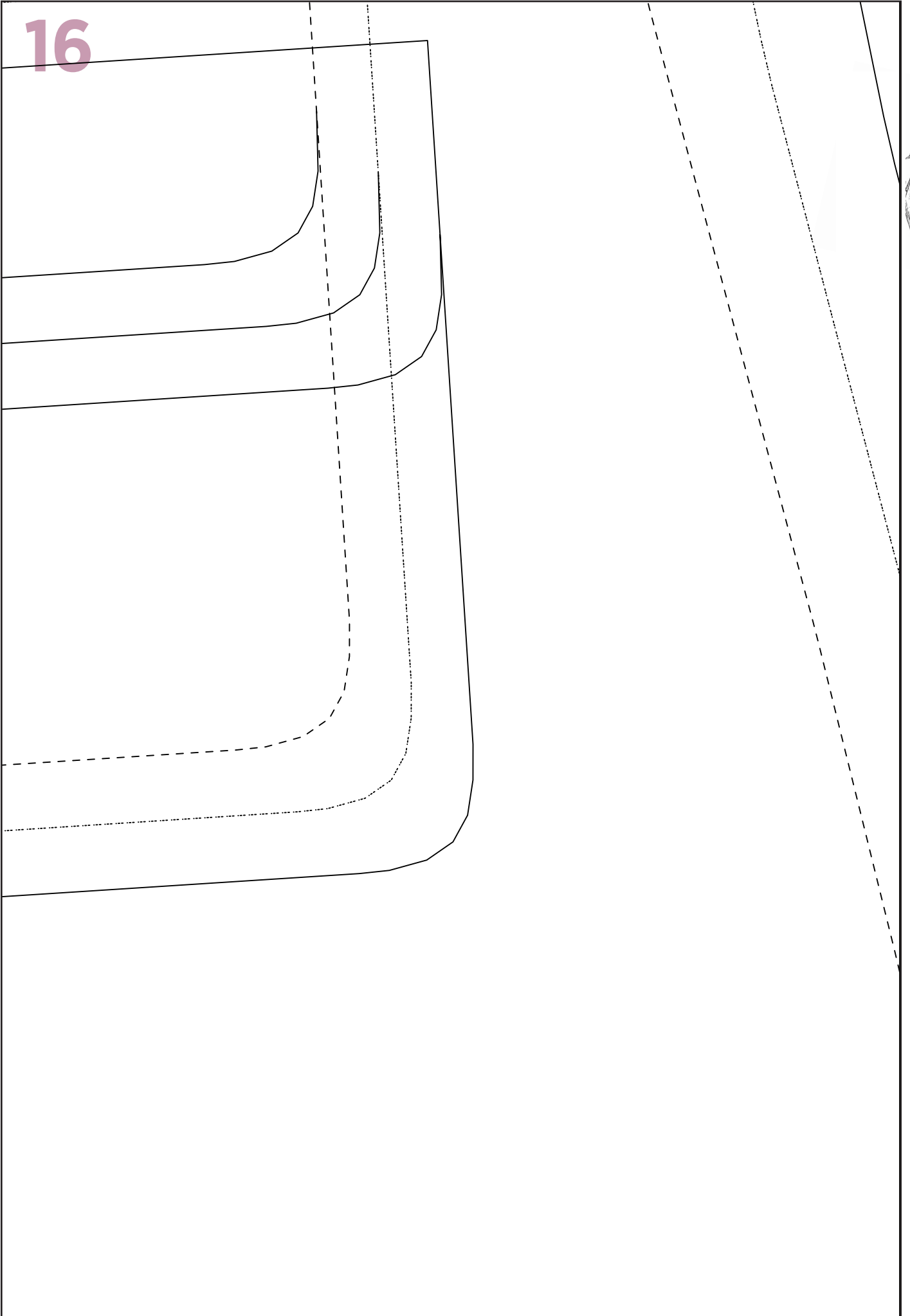
www.sewgirl.co.uk

© Fiona Hesford 2016





16





SIZE : S

SIZE : M

SIZE : L

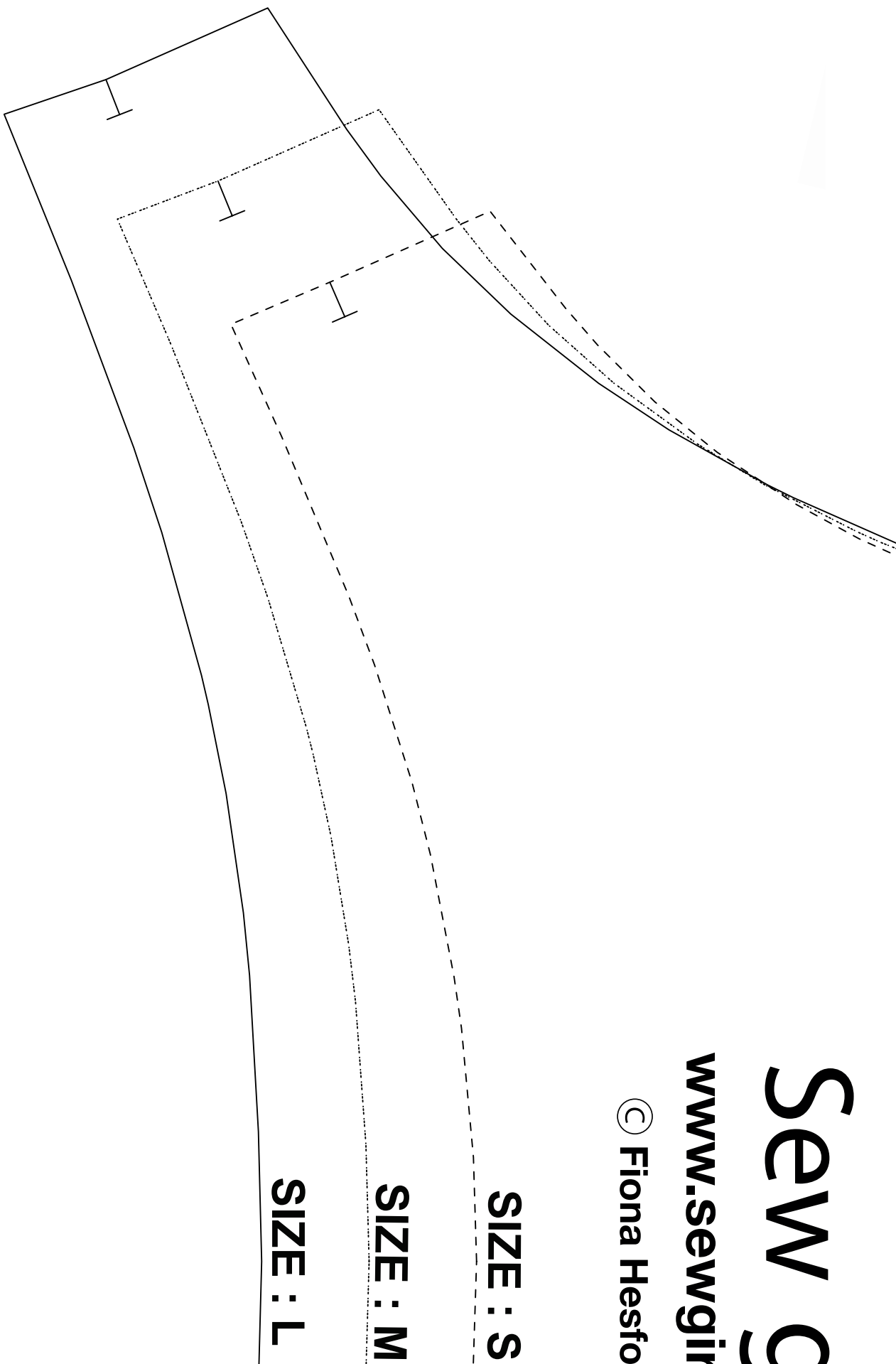


Sew g

www.sewgirl.com

© Fiona Hesford





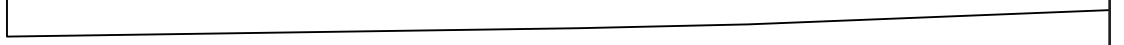
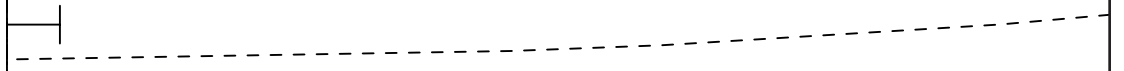
Sew C
www.sewgir

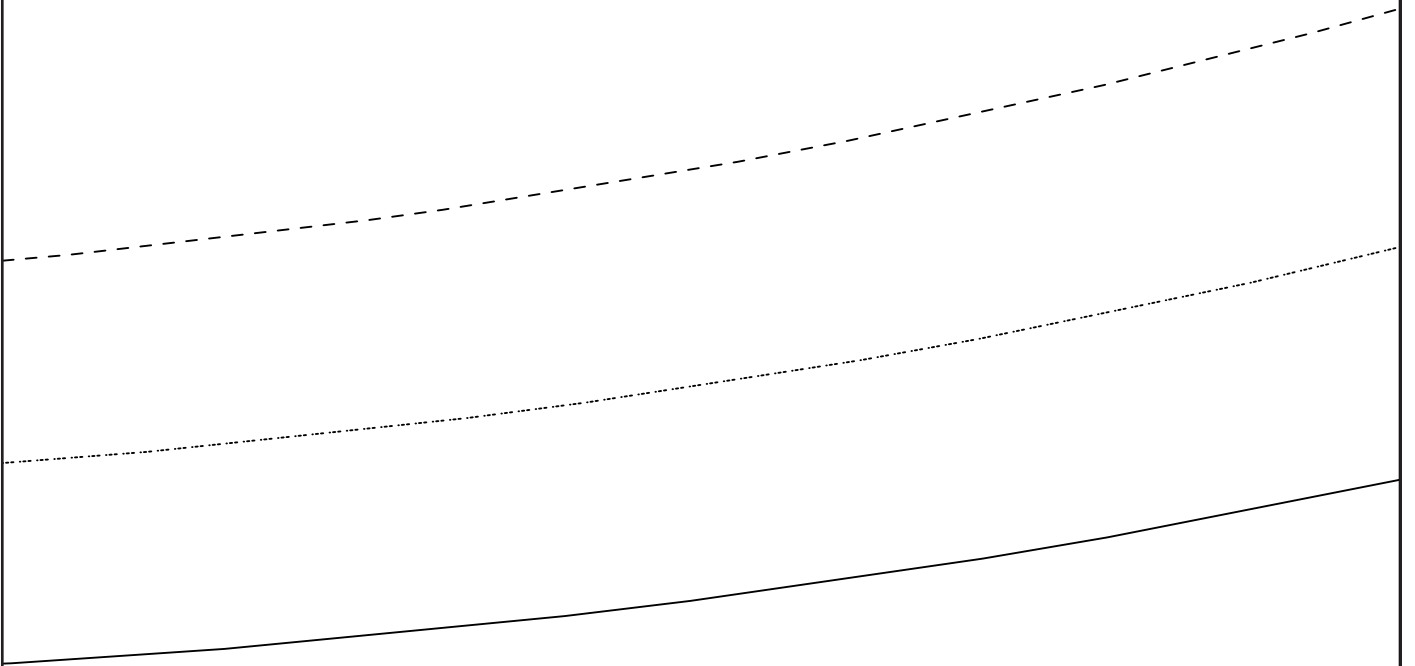
© Fiona Hesfo



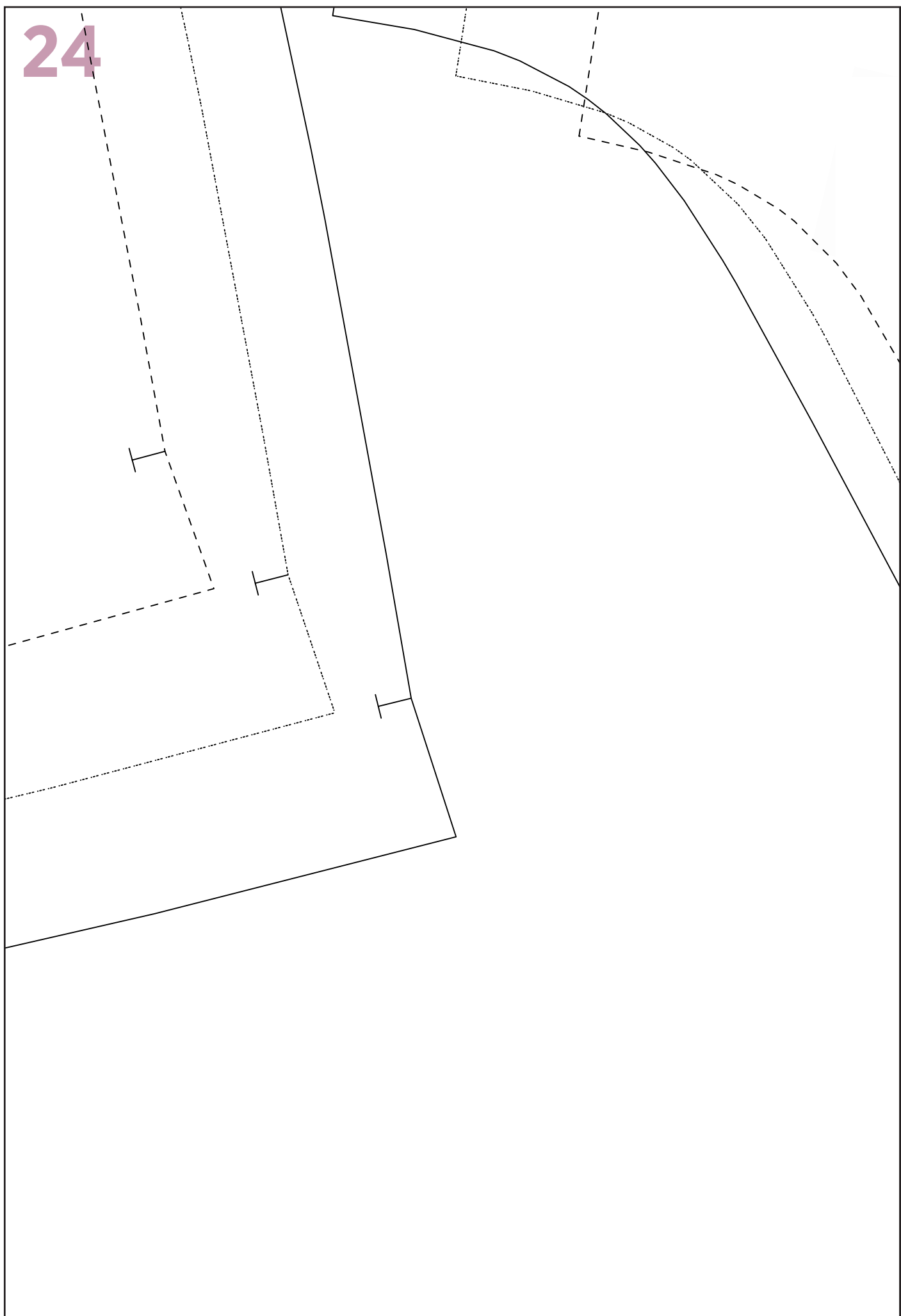
FRONT

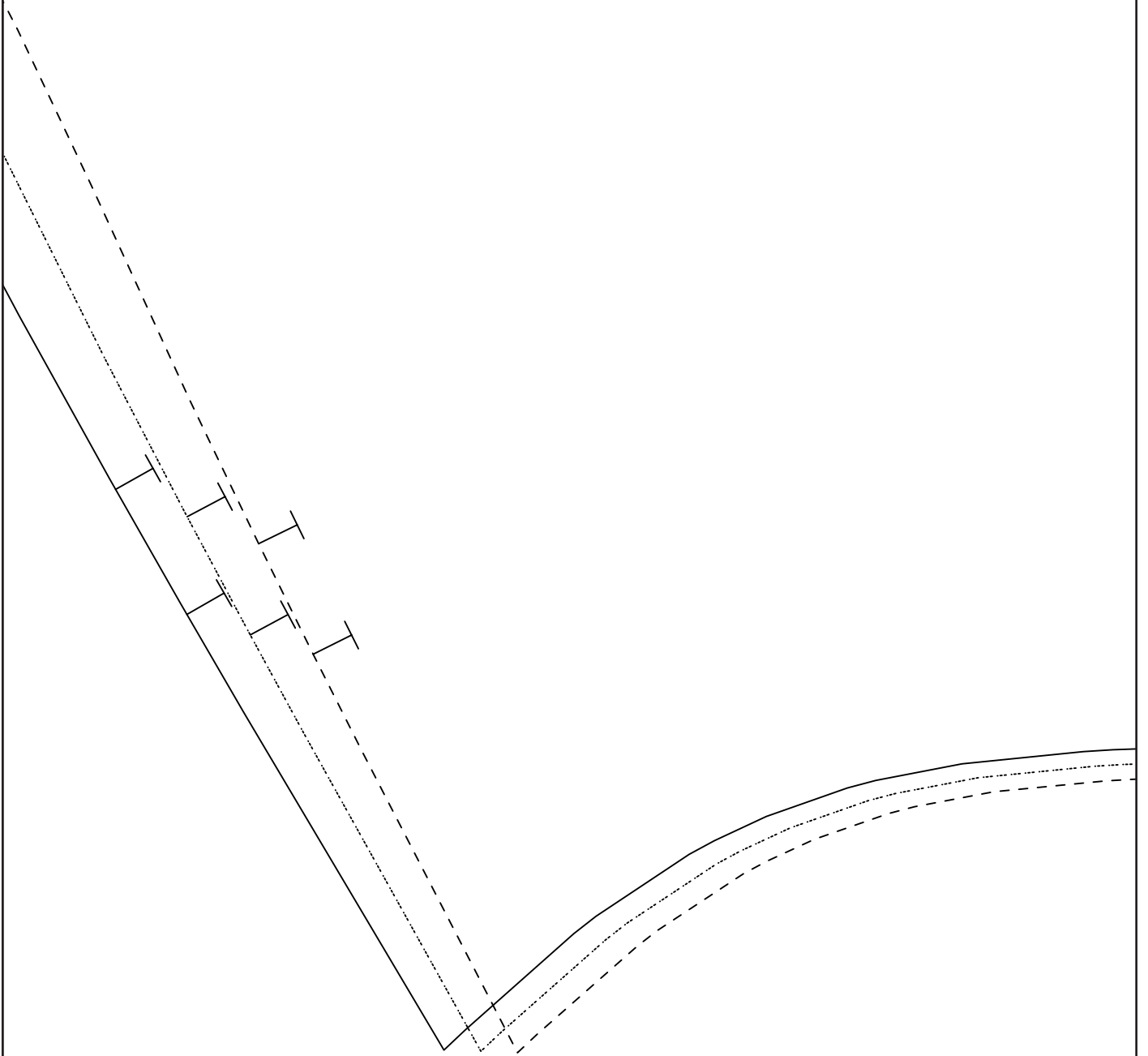
LILLIAN D
SLEEVE
CUT TWO O



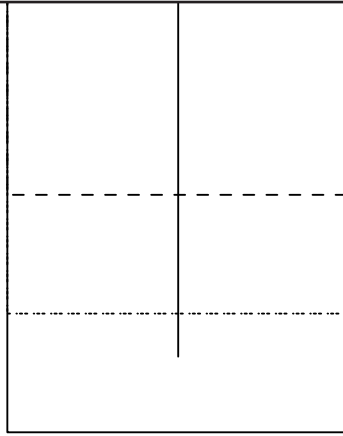


24





26

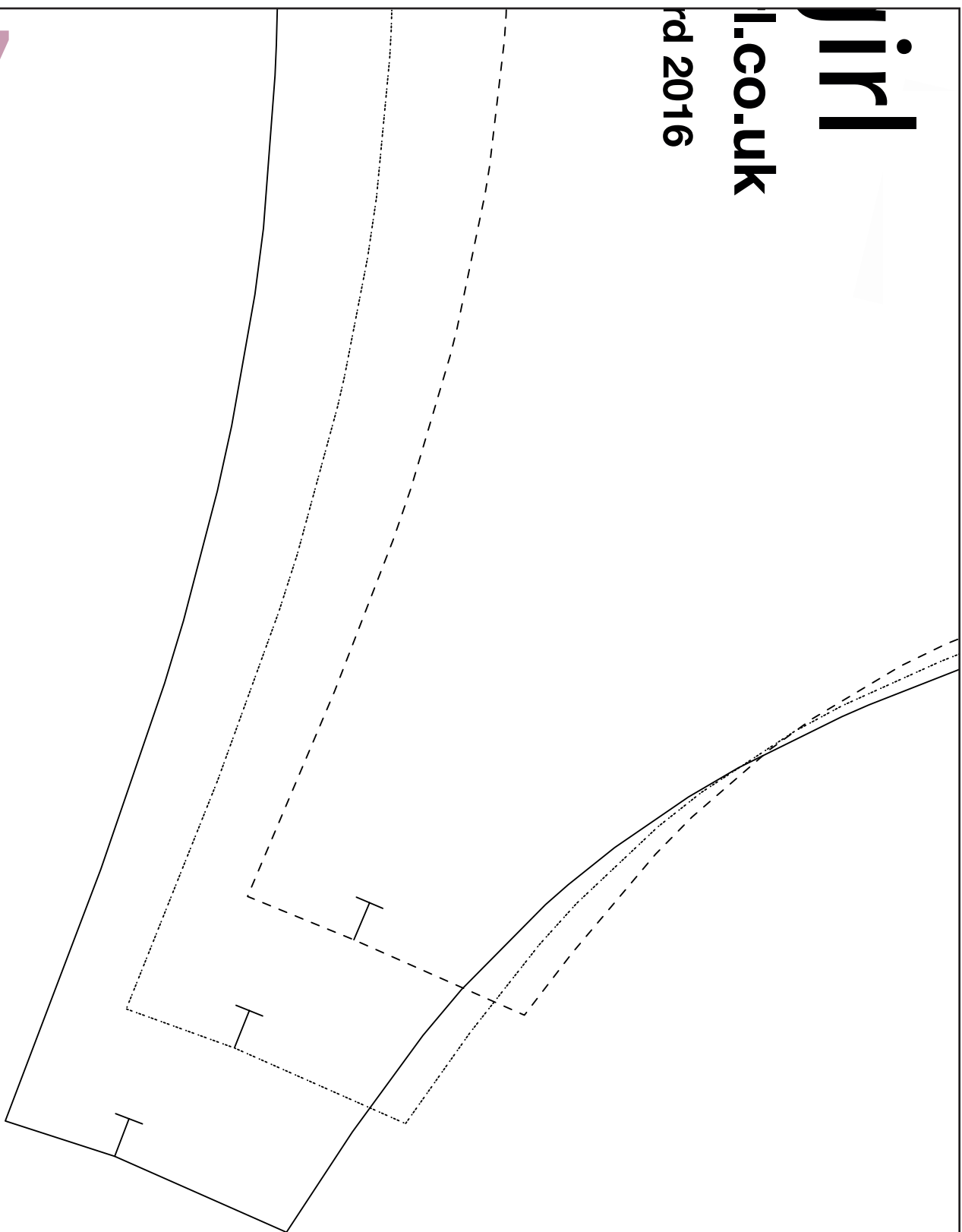




Jiri

l.co.uk

rd 2016



27



BACK

DRESS

3

N FABRIC

28