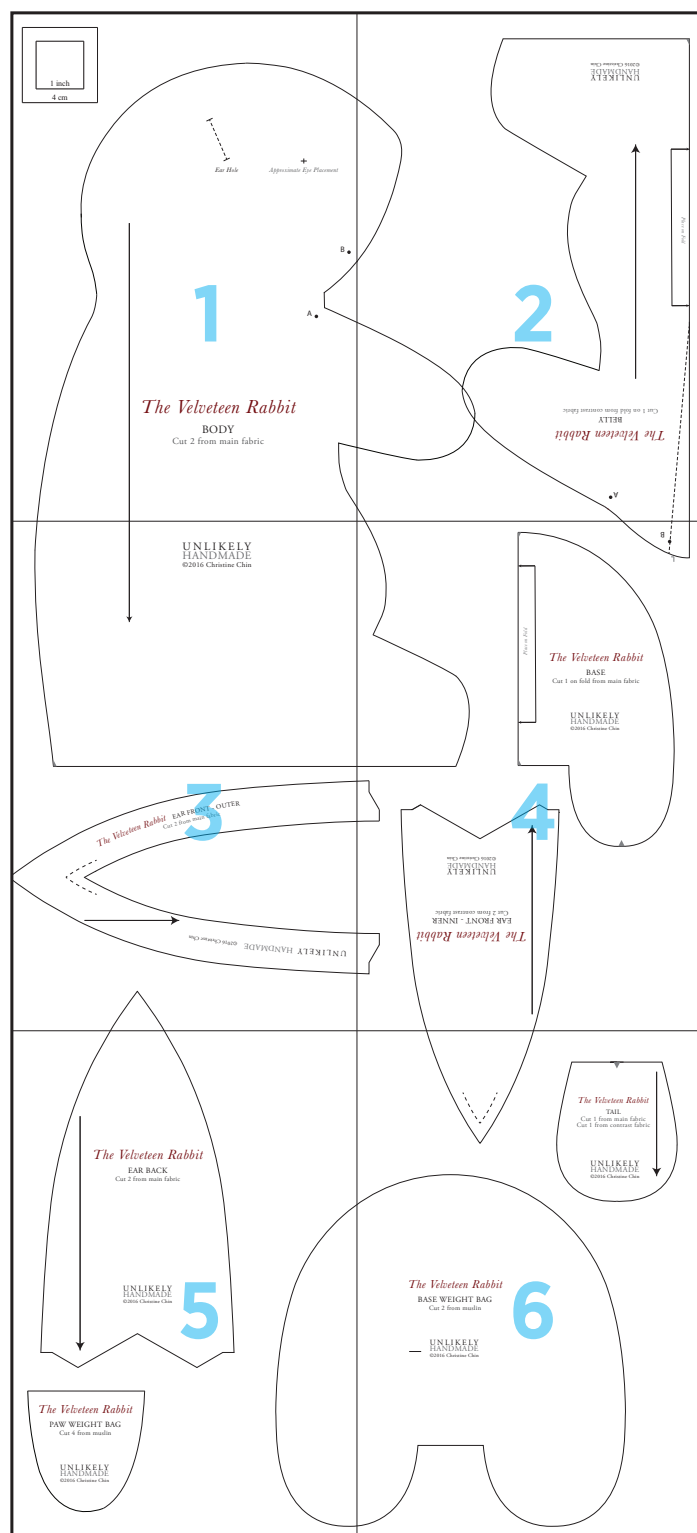
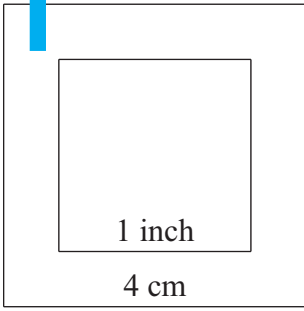


Velveteen Rabbit



1



Ear Hole



Approximate Eye Placement

B ●

A ●

The Velveteen Rabbit

BODY

Cut 2 from main fabric

2

UNLIKELY
HANDMADE
©2016 Christine Chin



Place on Fold

The Velveteen Rabbit
BELLY
Cut 1 on fold from contrast fabric

A ●

3

UNLIKELY
HANDMADE
©2016 Christine Chin



The Velveteen Rabbit EAR FRONT - OUTER
Cut 2 from main fabric

UNLIKELY HANDMADE ©2016 Christine Chin

4

B

Place on Fold

The Velveteen Rabbit

BASE

Cut 1 on fold from main fabric

UNLIKELY
HANDMADE
©2016 Christine Chin

The Velveteen Rabbit

EAR FRONT - INNER
Cut 2 from contrast fabric

UNLIKELY
HANDMADE
©2016 Christine Chin

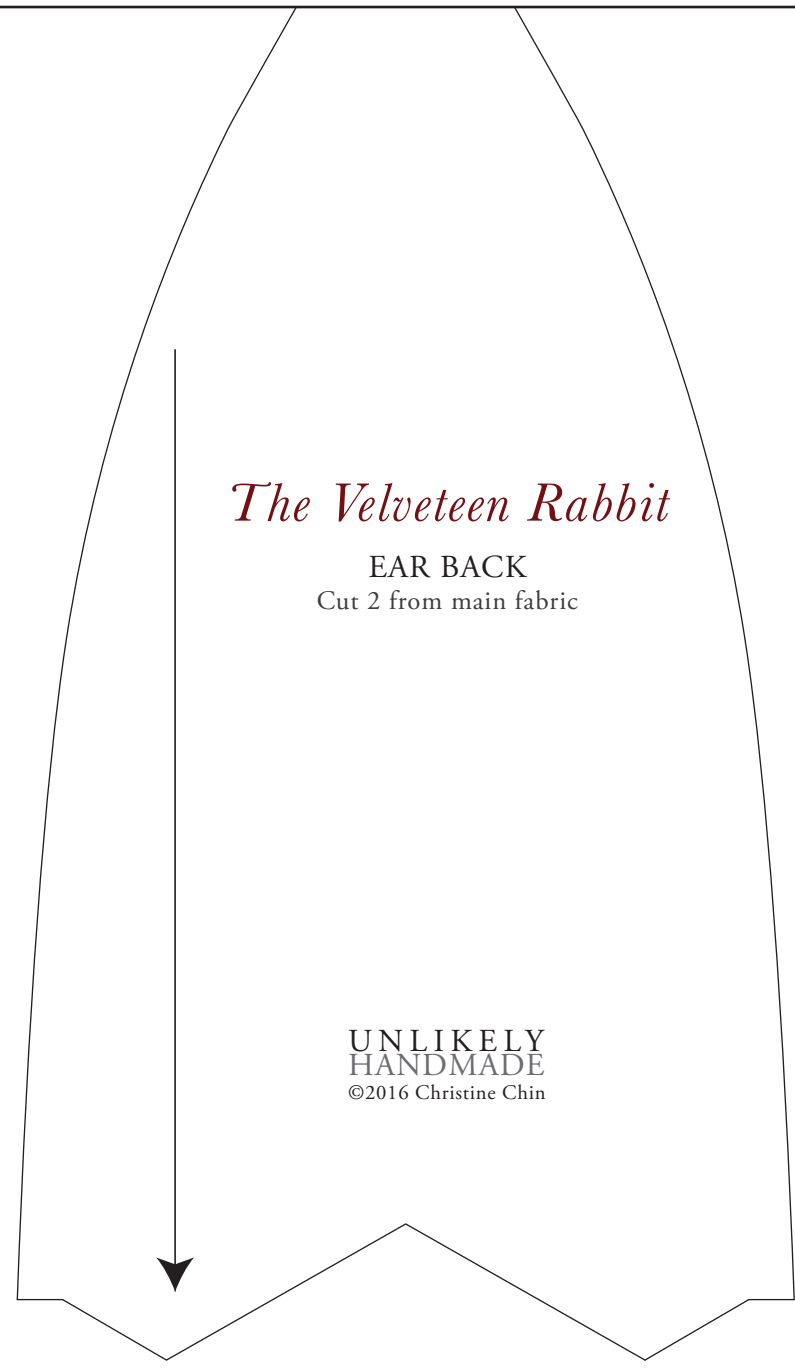


5

The Velveteen Rabbit

EAR BACK
Cut 2 from main fabric

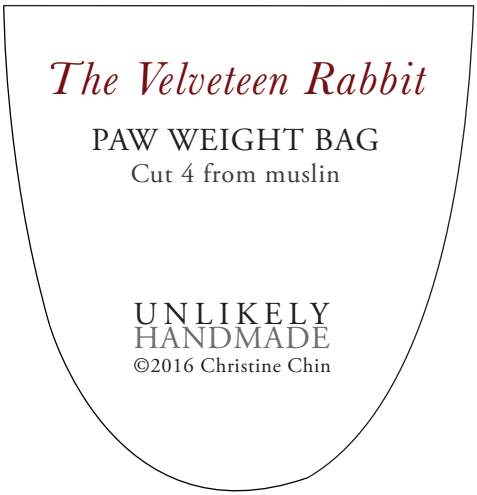
UNLIKELY
HANDMADE
©2016 Christine Chin



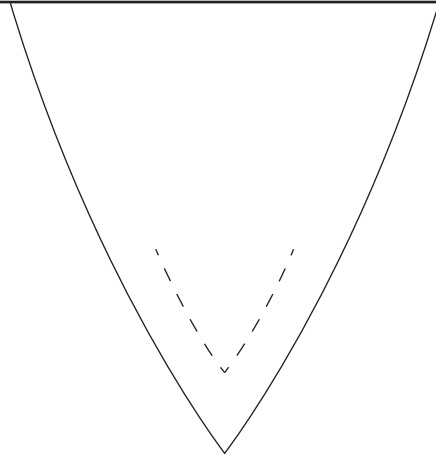
The Velveteen Rabbit

PAW WEIGHT BAG
Cut 4 from muslin

UNLIKELY
HANDMADE
©2016 Christine Chin



6



The Velveteen Rabbit

TAIL

Cut 1 from main fabric
Cut 1 from contrast fabric

UNLIKELY
HANDMADE
©2016 Christine Chin

The Velveteen Rabbit

BASE WEIGHT BAG

Cut 2 from muslin

UNLIKELY
HANDMADE
©2016 Christine Chin

