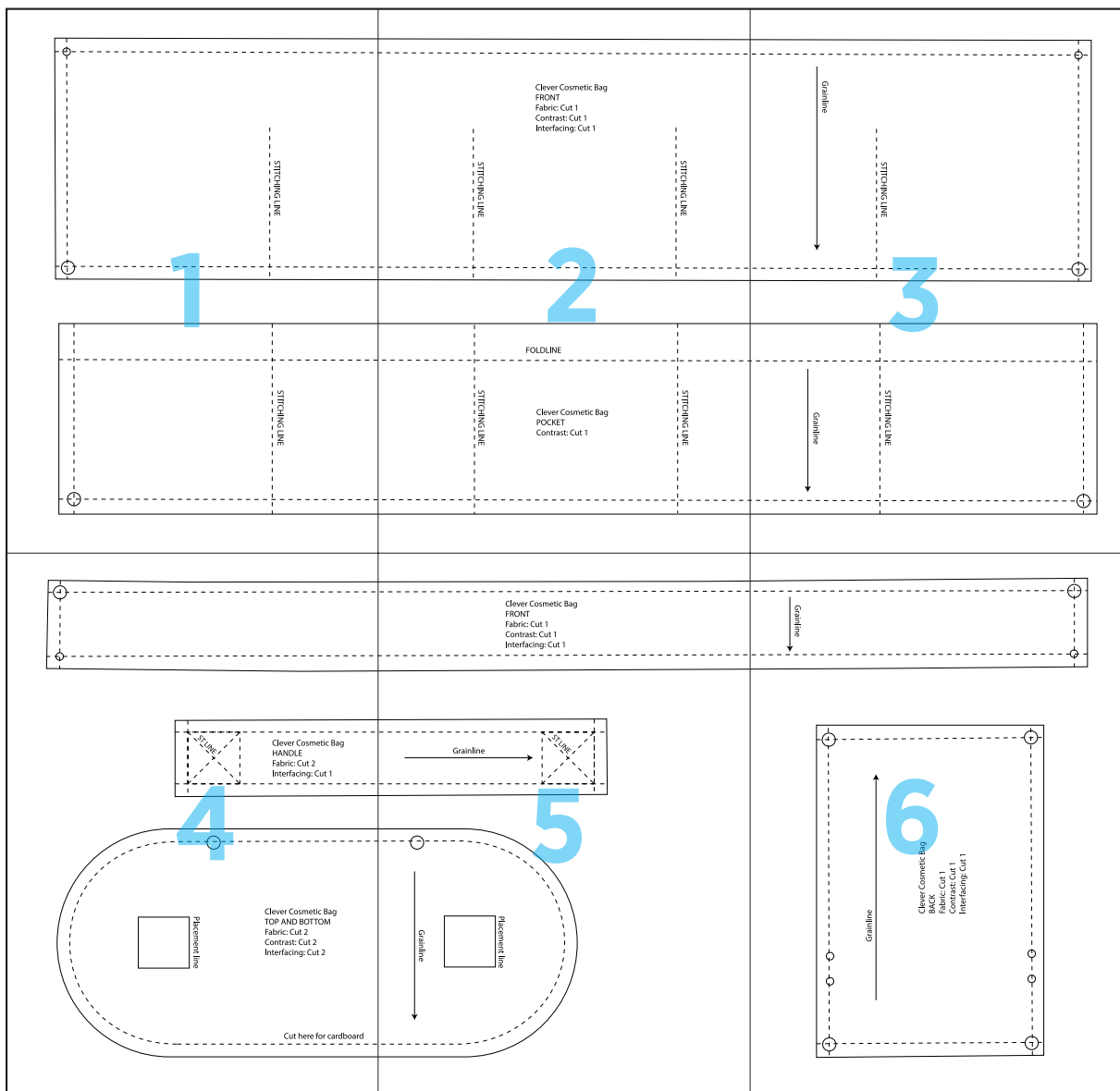
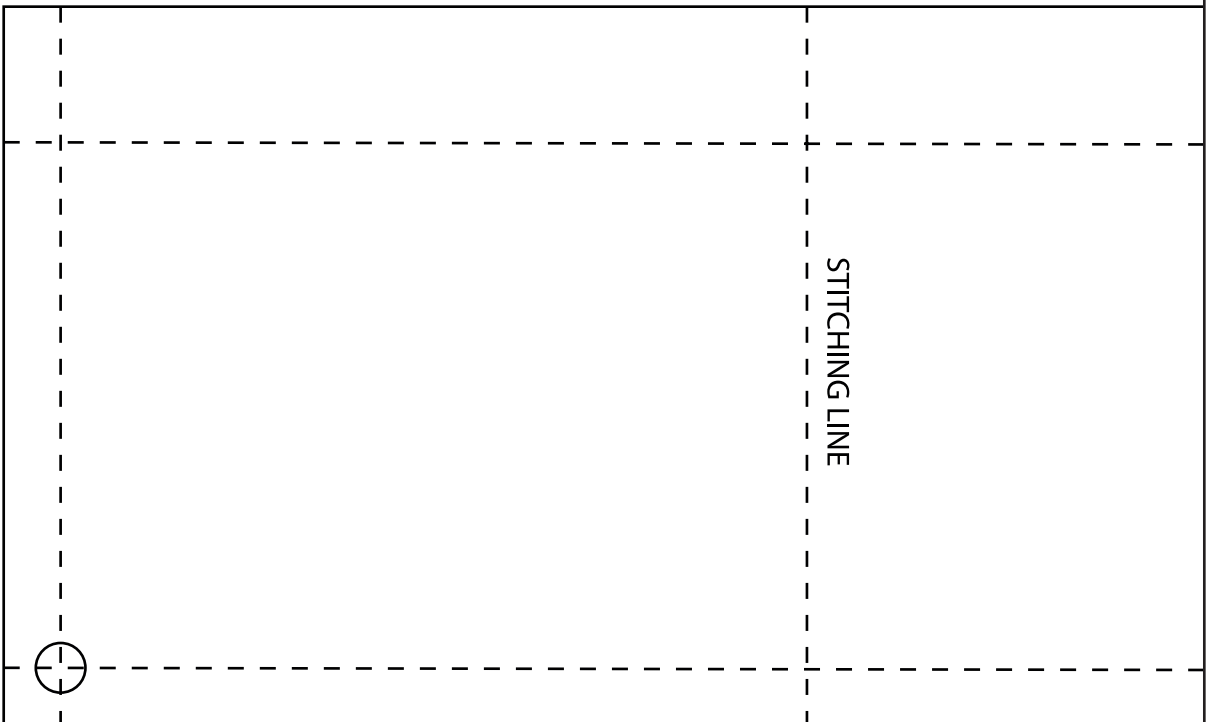
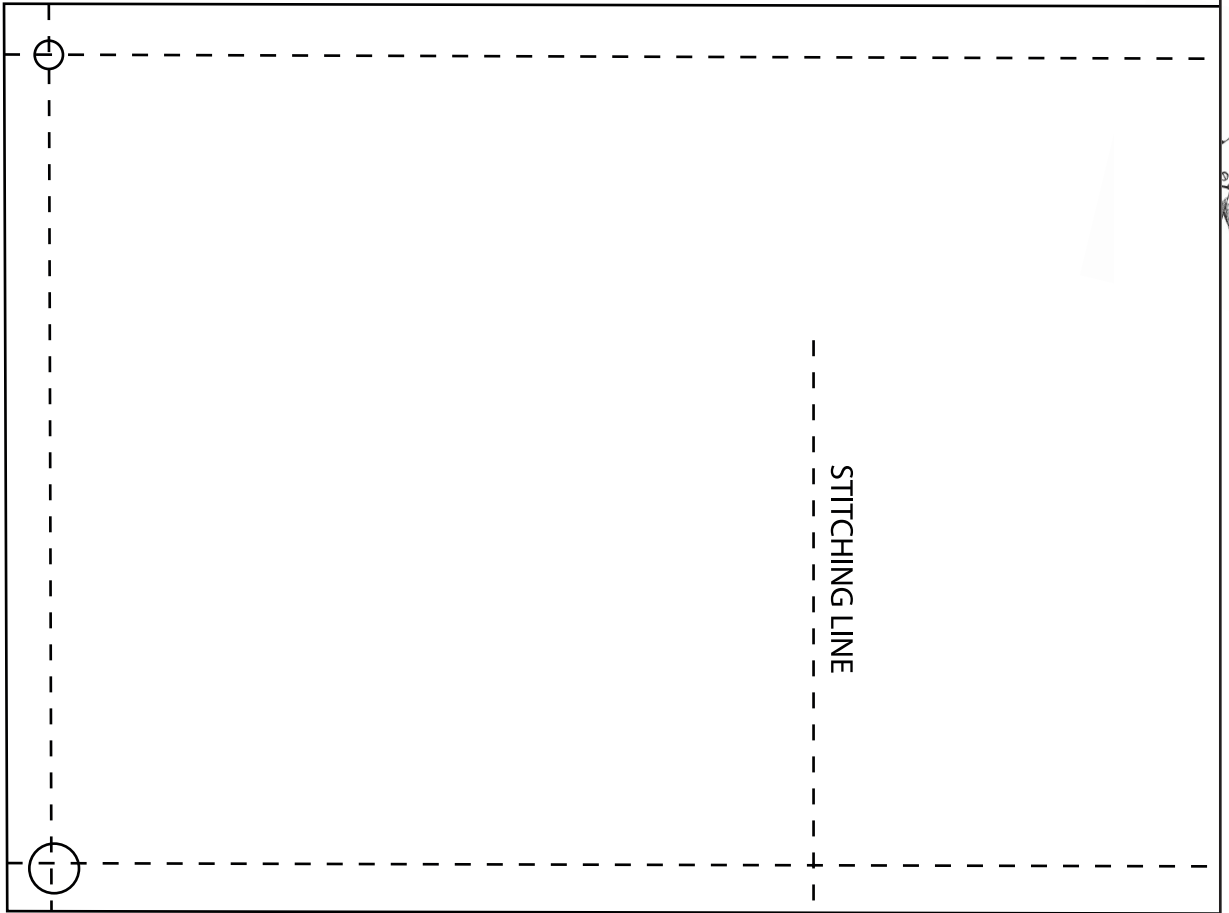


Clever Cosmetic Bag



1





Clever Cosmetic Bag
FRONT
Fabric: Cut 1
Contrast: Cut 1
Interfacing: Cut 1

STITCHING LINE

STITCHING LINE

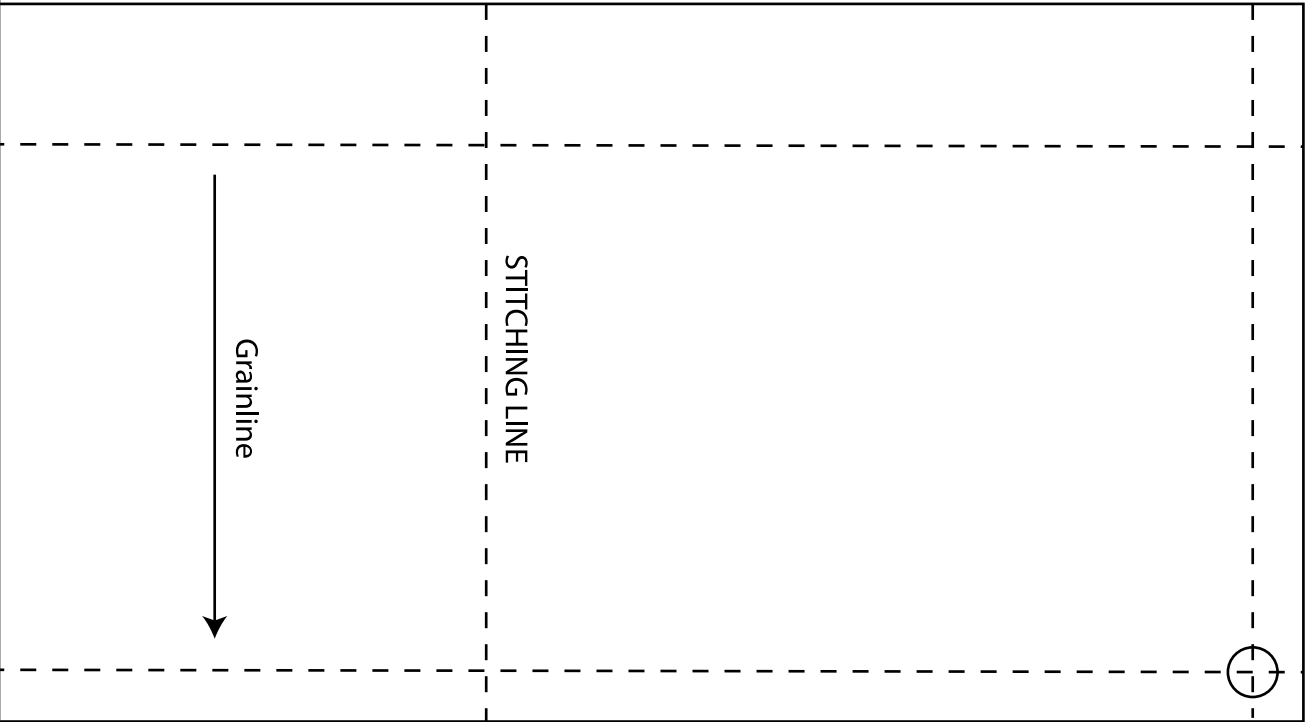
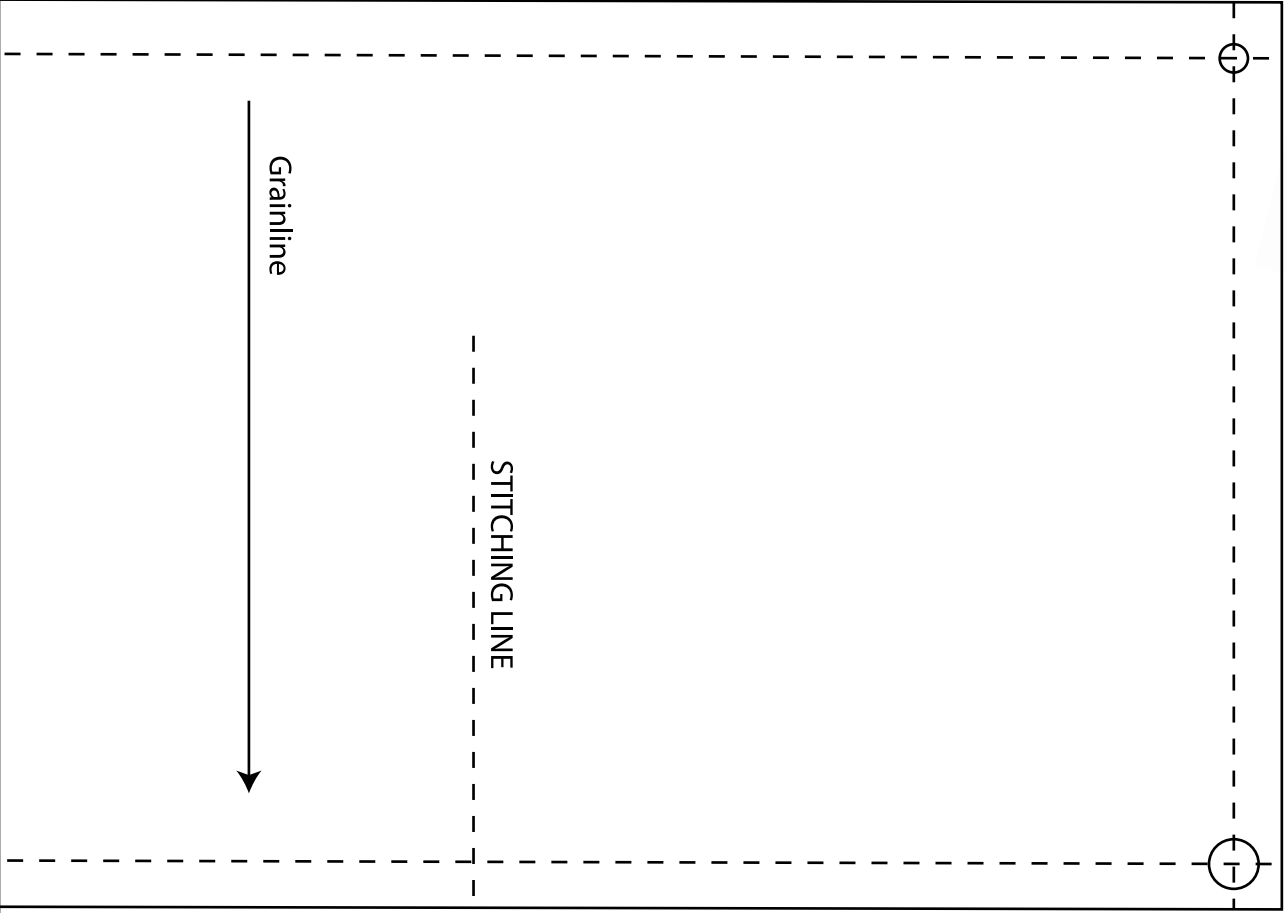
FOLDLINE

Clever Cosmetic Bag
POCKET
Contrast: Cut 1

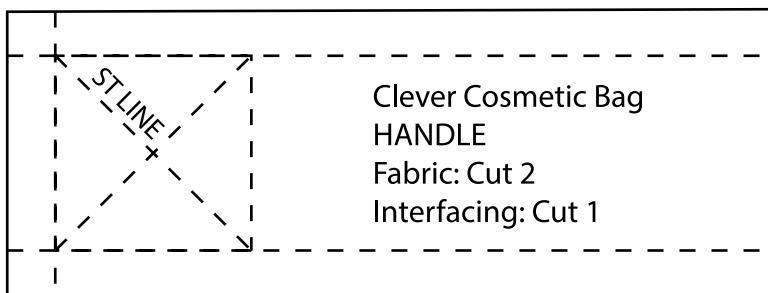
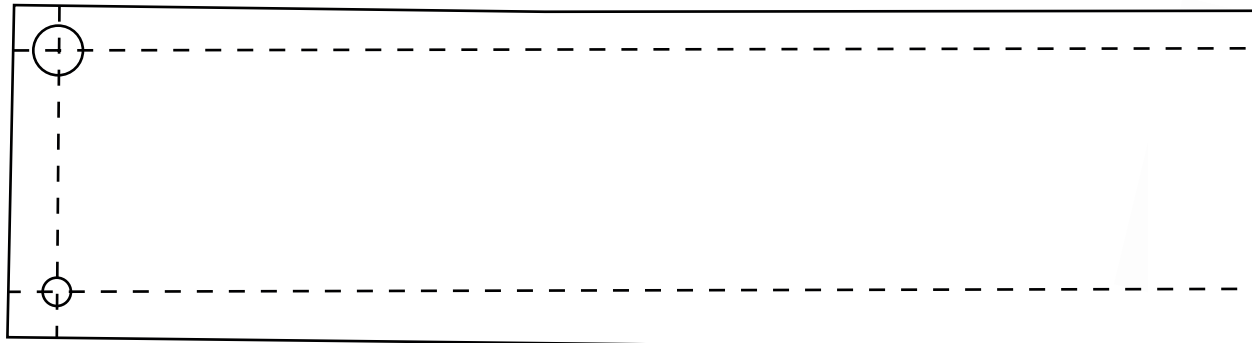
STITCHING LINE

STITCHING LINE

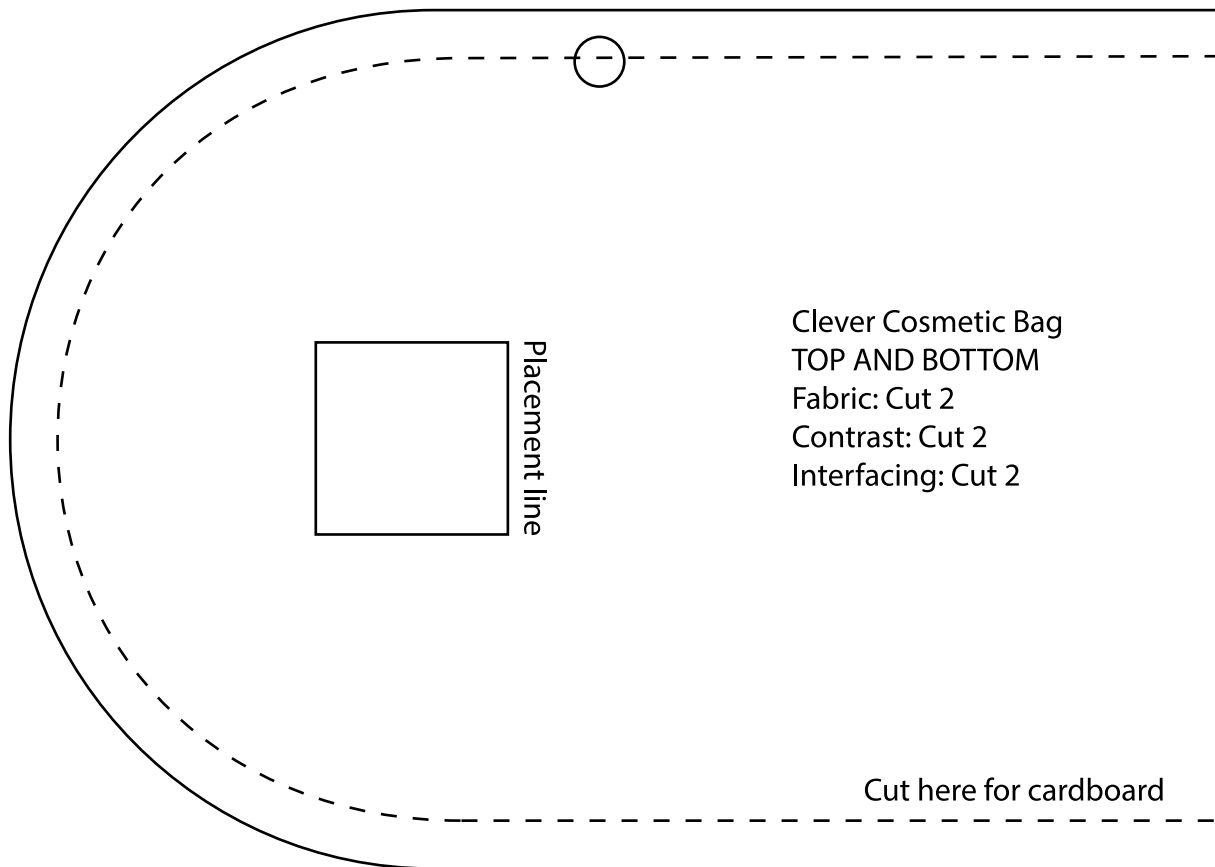
3



4



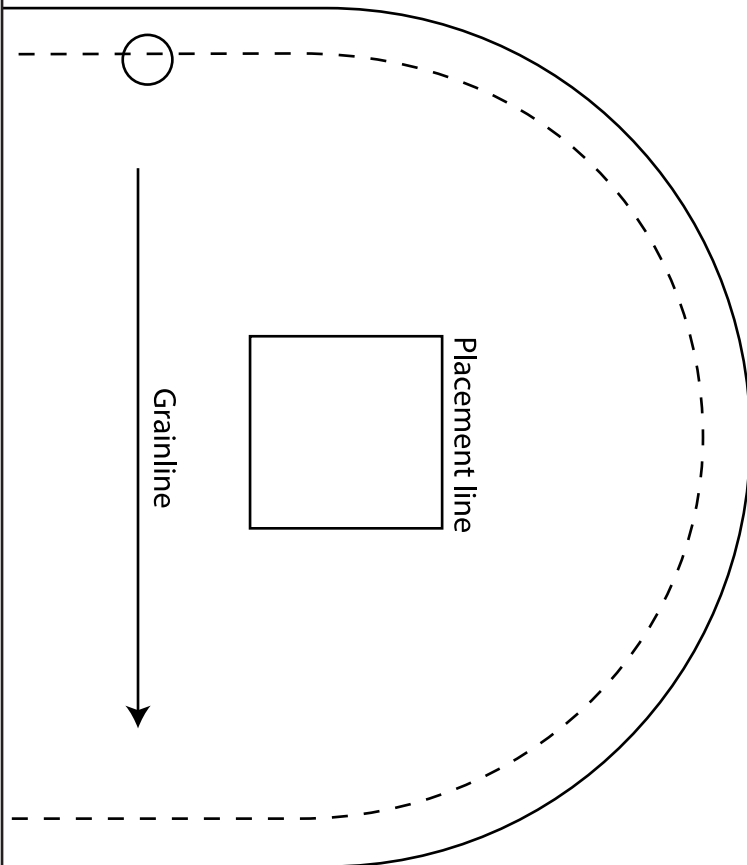
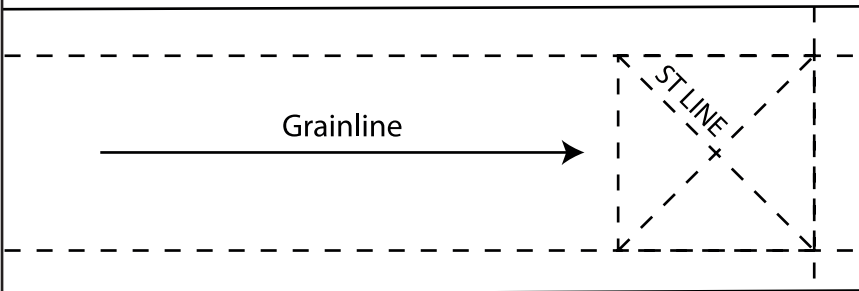
Clever Cosmetic Bag
HANDLE
Fabric: Cut 2
Interfacing: Cut 1



Clever Cosmetic Bag
TOP AND BOTTOM
Fabric: Cut 2
Contrast: Cut 2
Interfacing: Cut 2

5

Clever Cosmetic Bag
FRONT
Fabric: Cut 1
Contrast: Cut 1
Interfacing: Cut 1



6

