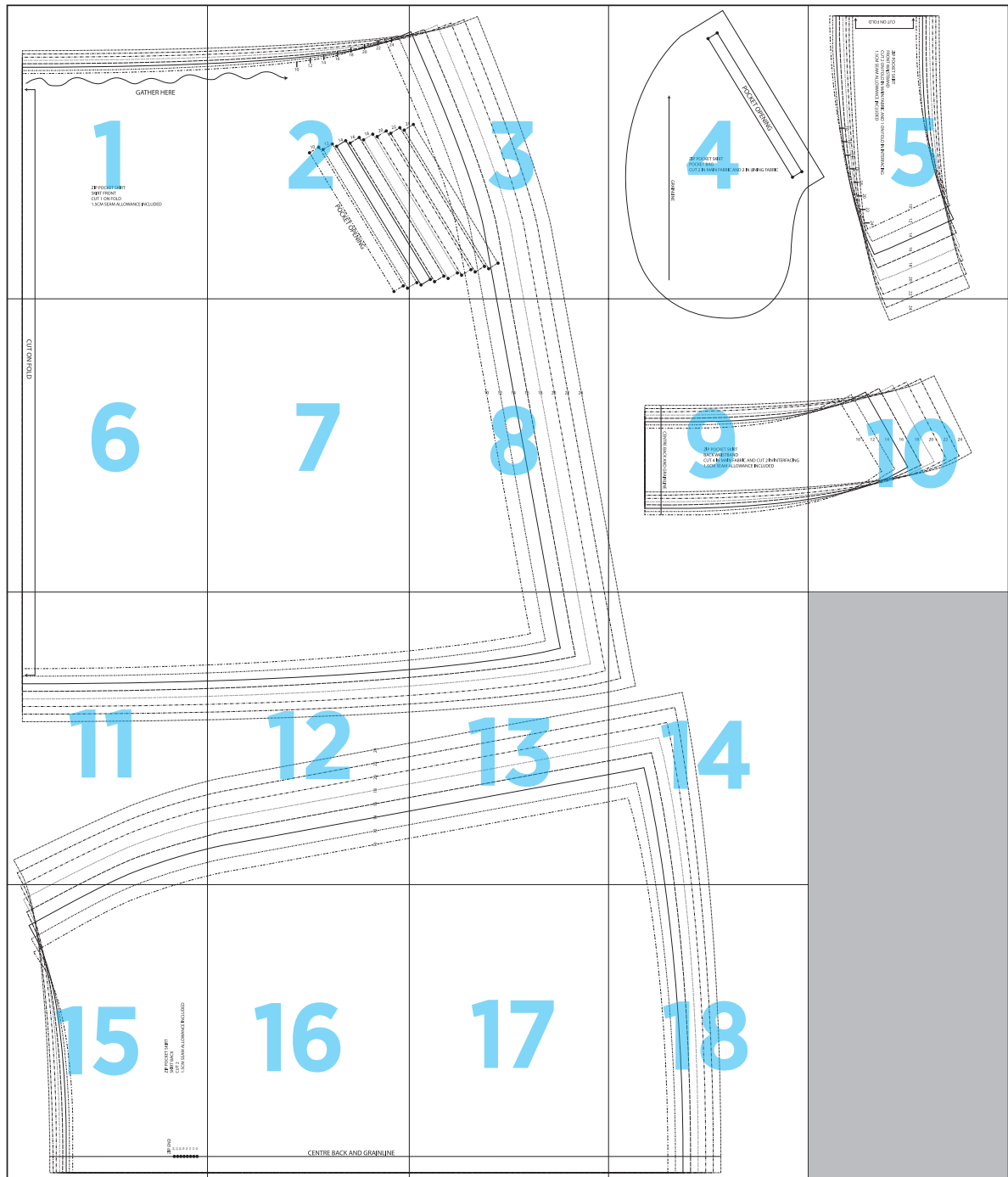
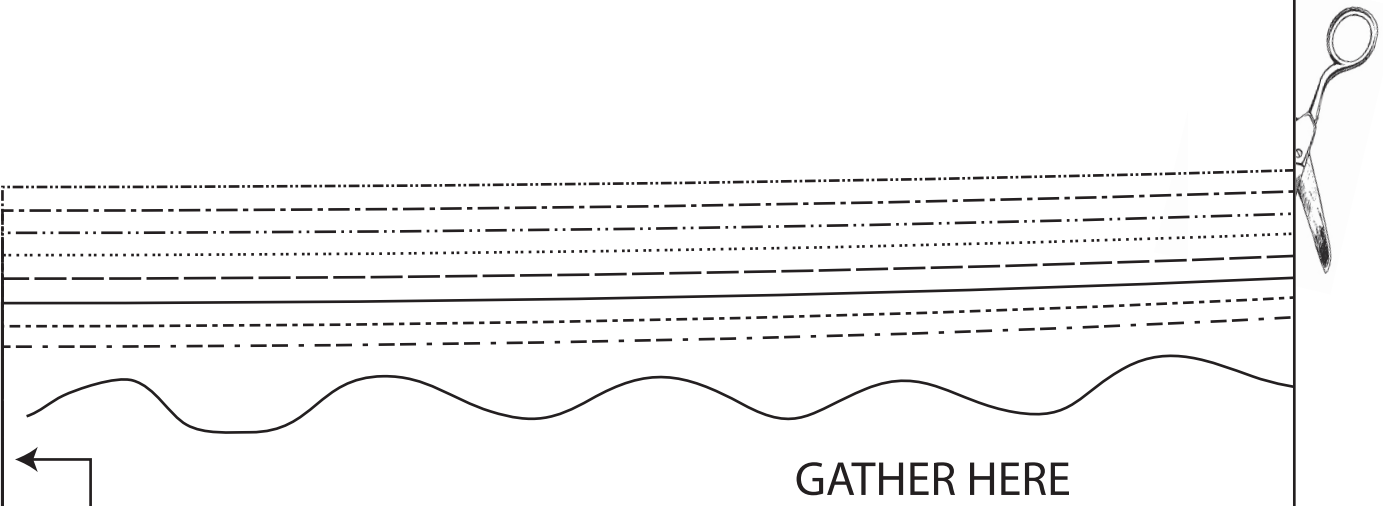


# Tweed Skirt



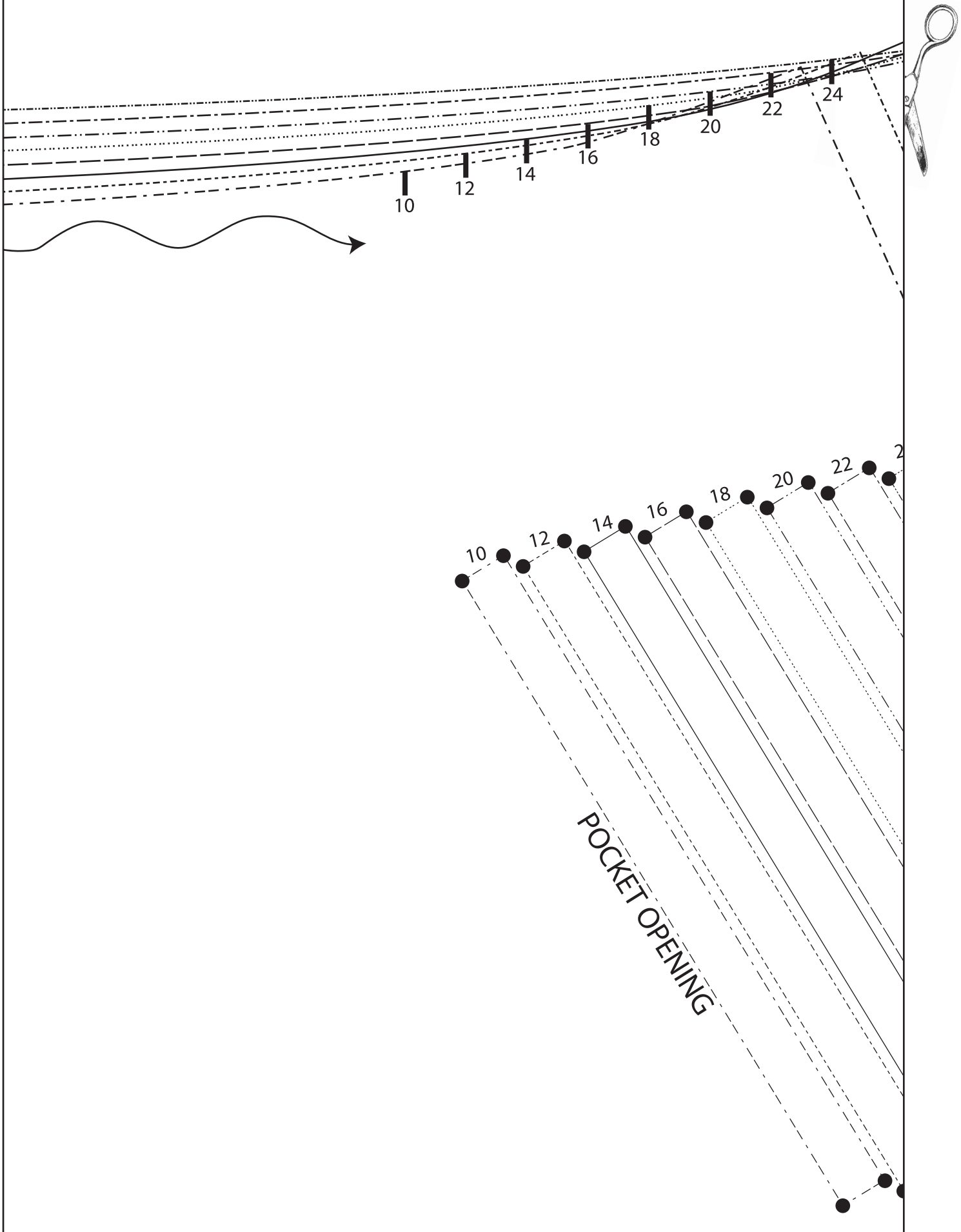
1



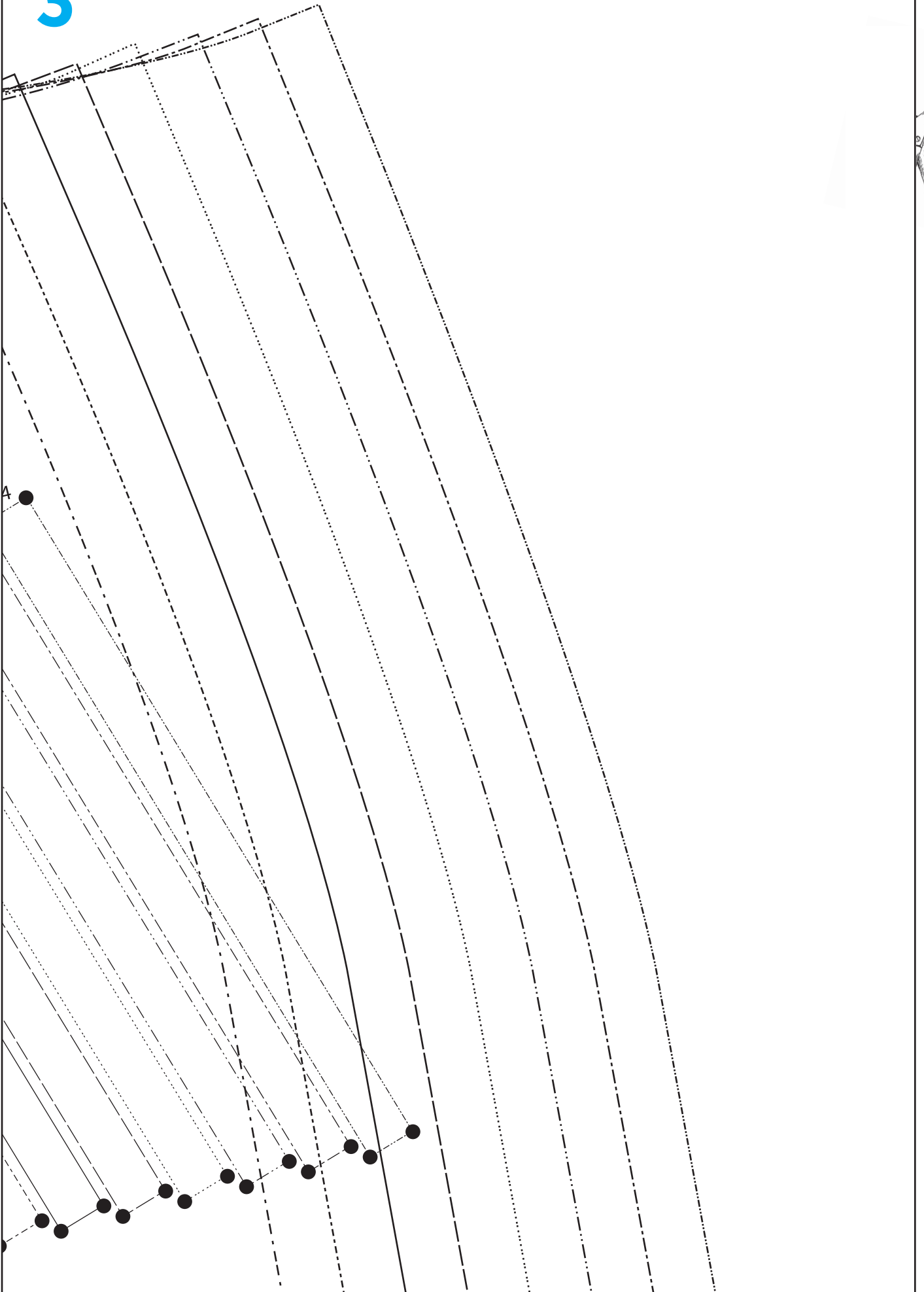
GATHER HERE

ZIP POCKET SKIRT  
SKIRT FRONT  
CUT 1 ON FOLD  
1.5CM SEAM ALLOWANCE INCLUDED

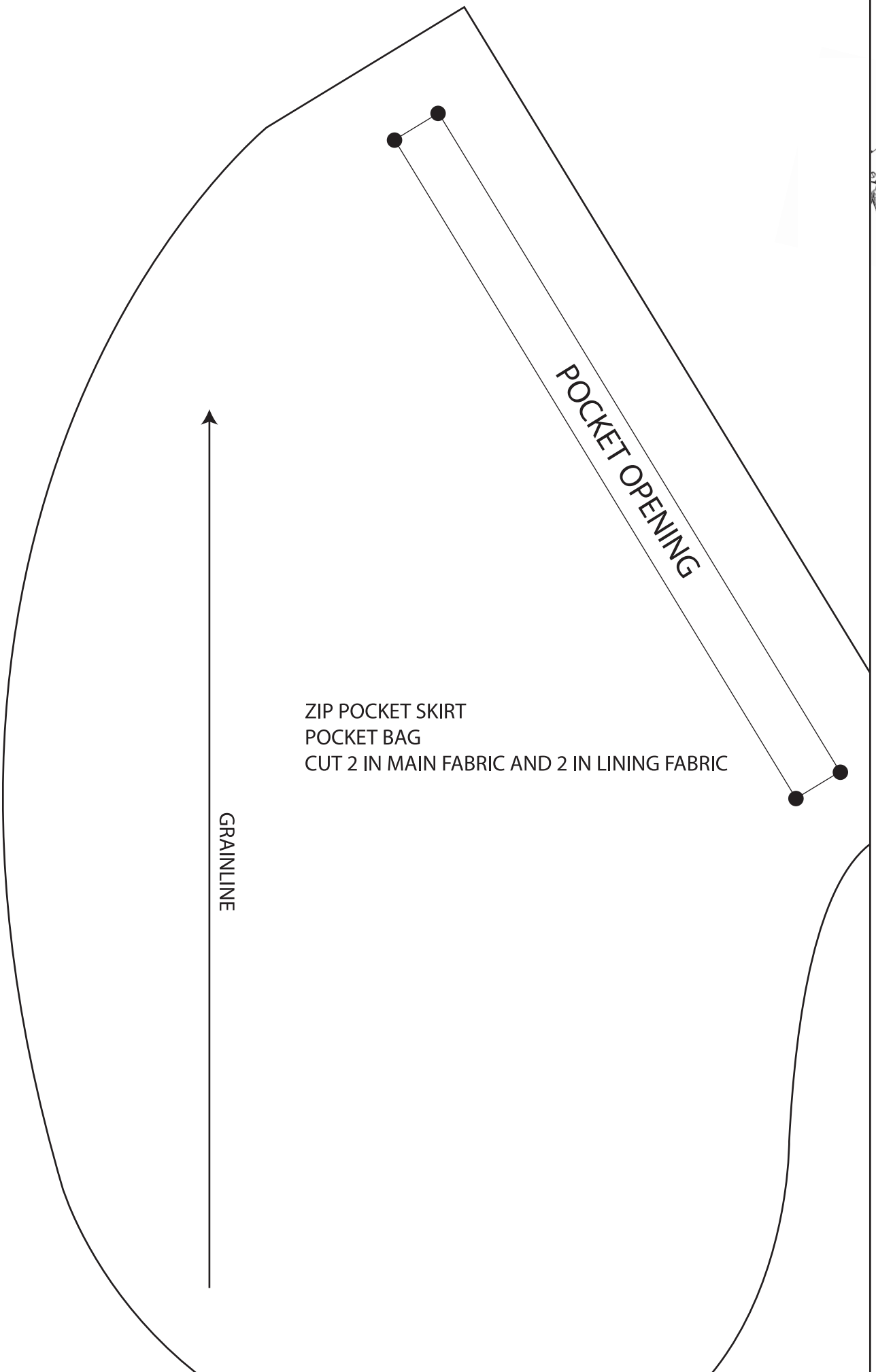
2



3



4

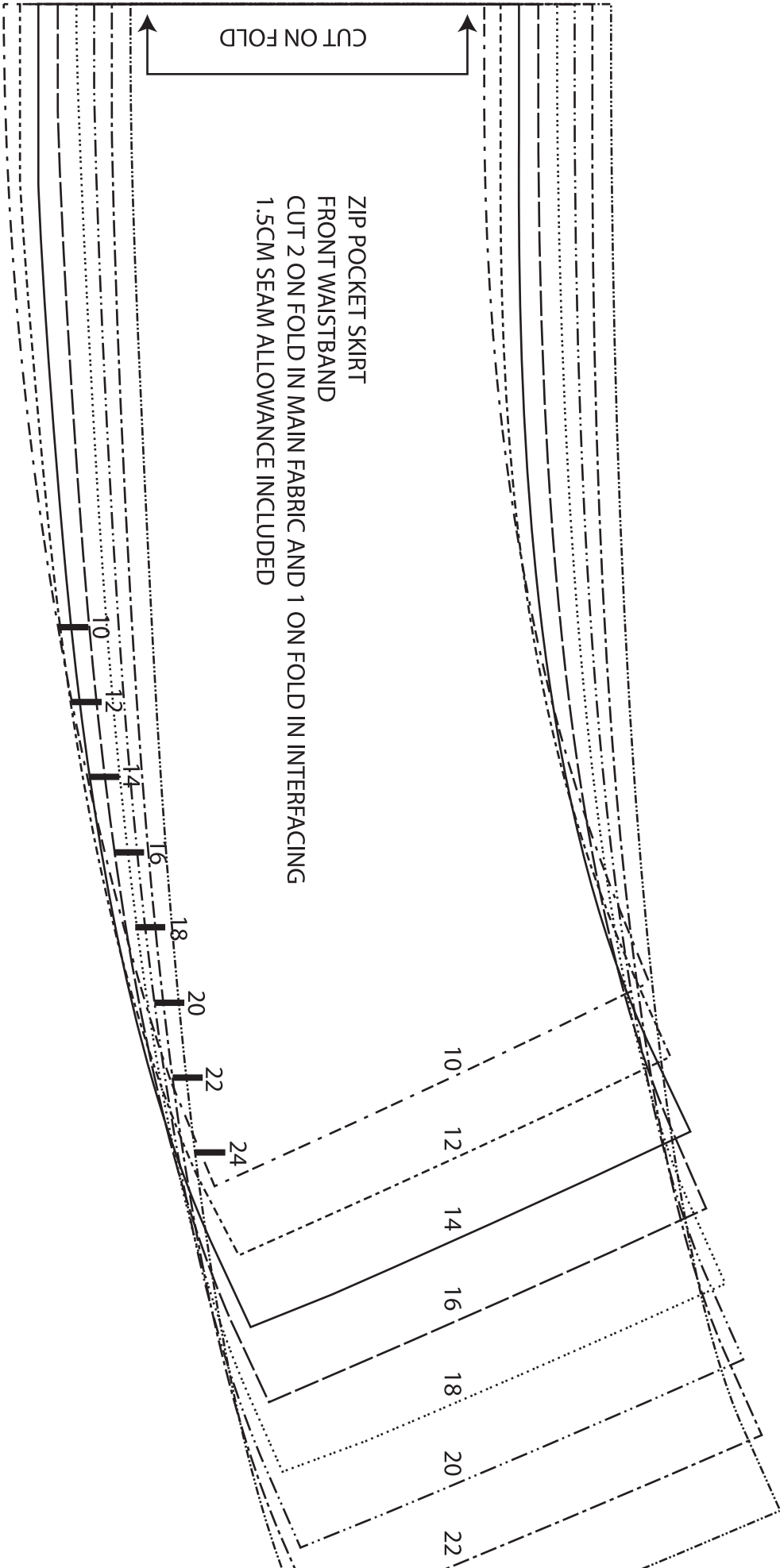


ZIP POCKET SKIRT  
POCKET BAG  
CUT 2 IN MAIN FABRIC AND 2 IN LINING FABRIC

GRAINLINE

POCKET OPENING





CUT ON FOLD

ZIP POCKET SKIRT  
FRONT WAISTBAND  
CUT 2 ON FOLD IN MAIN FABRIC AND 1 ON FOLD IN INTERFACING  
1.5CM SEAM ALLOWANCE INCLUDED

5

6

CUT ON FOLD



7

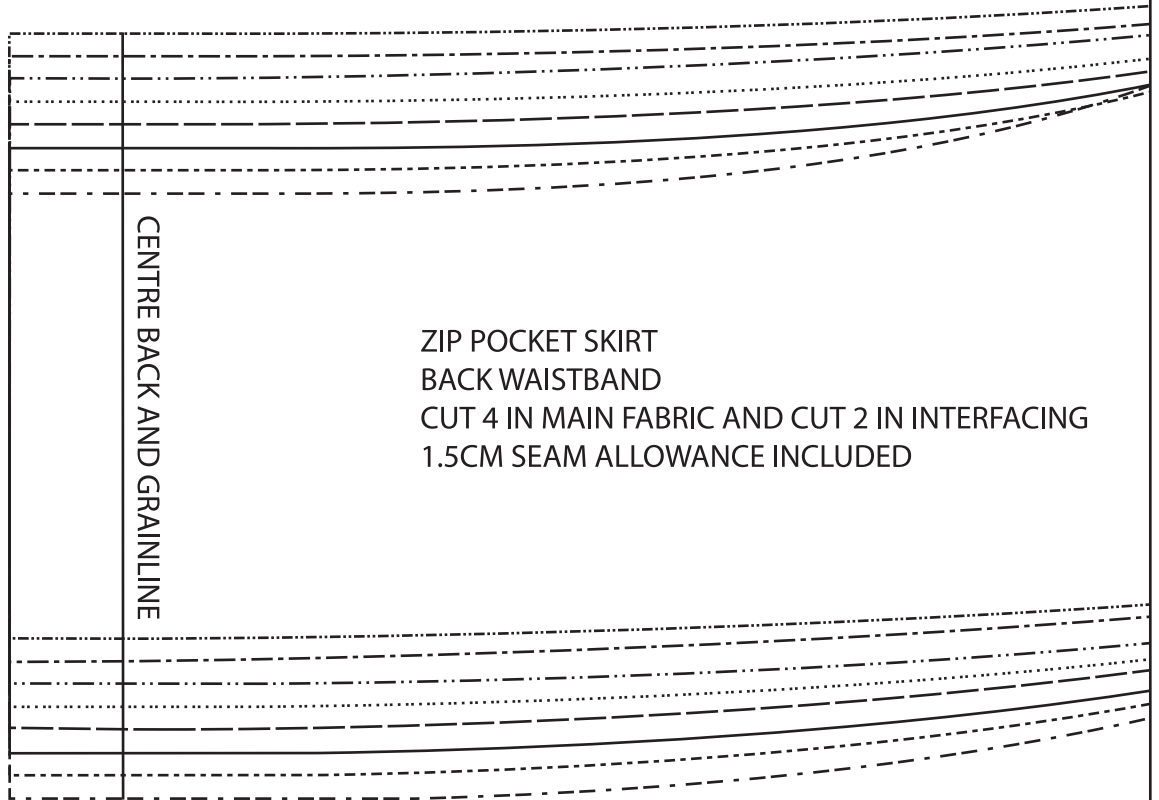




8

10 12 14 16 18 20 22 24





ZIP POCKET SKIRT  
BACK WAISTBAND  
CUT 4 IN MAIN FABRIC AND CUT 2 IN INTERFACING  
1.5CM SEAM ALLOWANCE INCLUDED

10

24

10

12

14

16

18

20

22

24



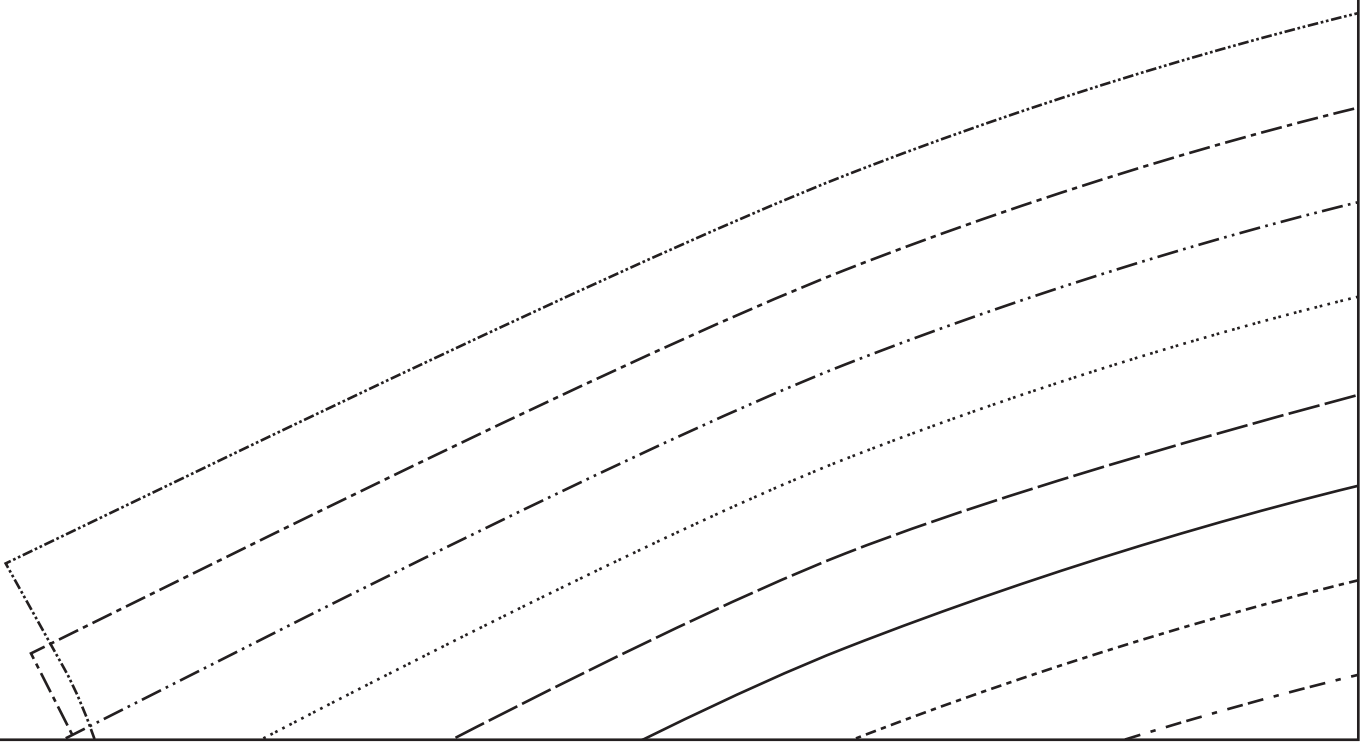
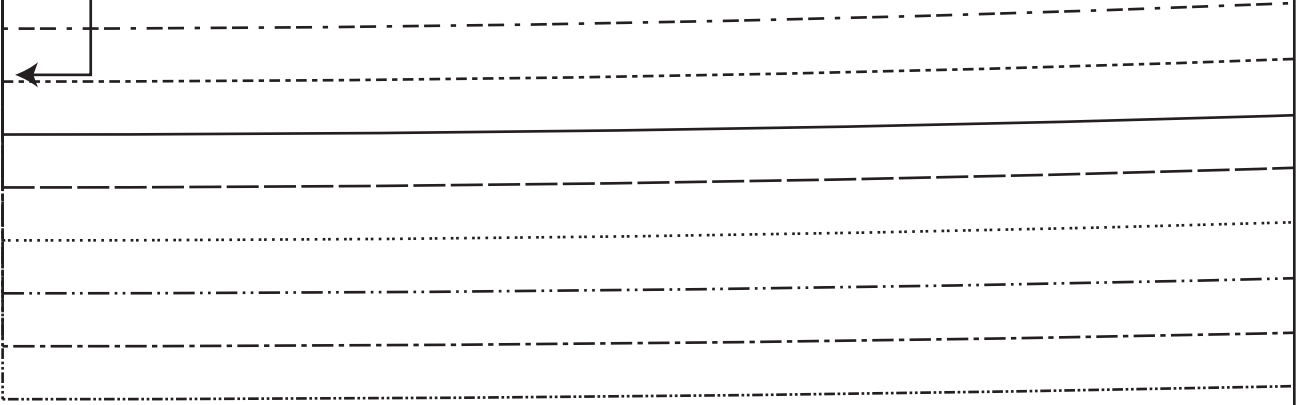
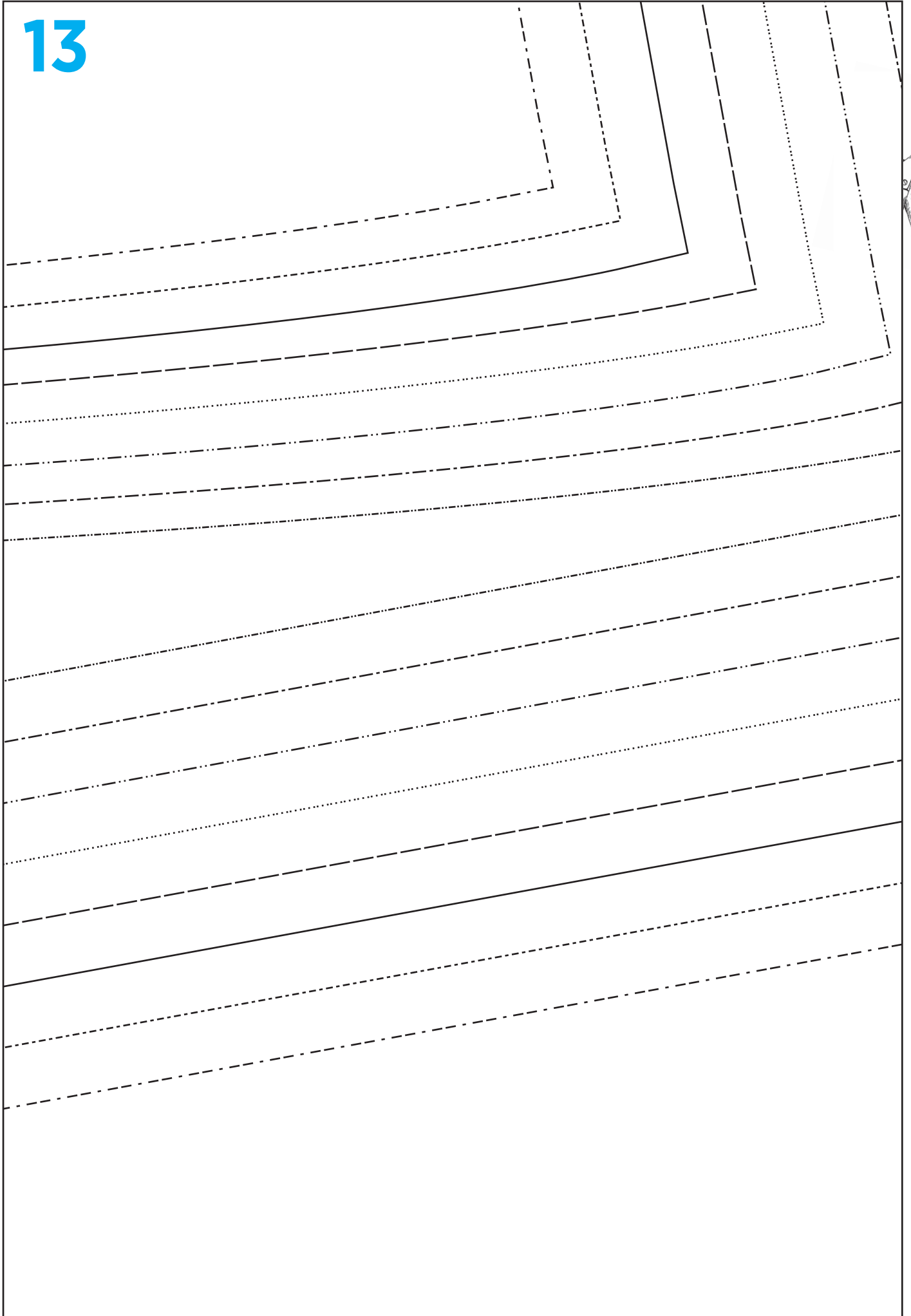


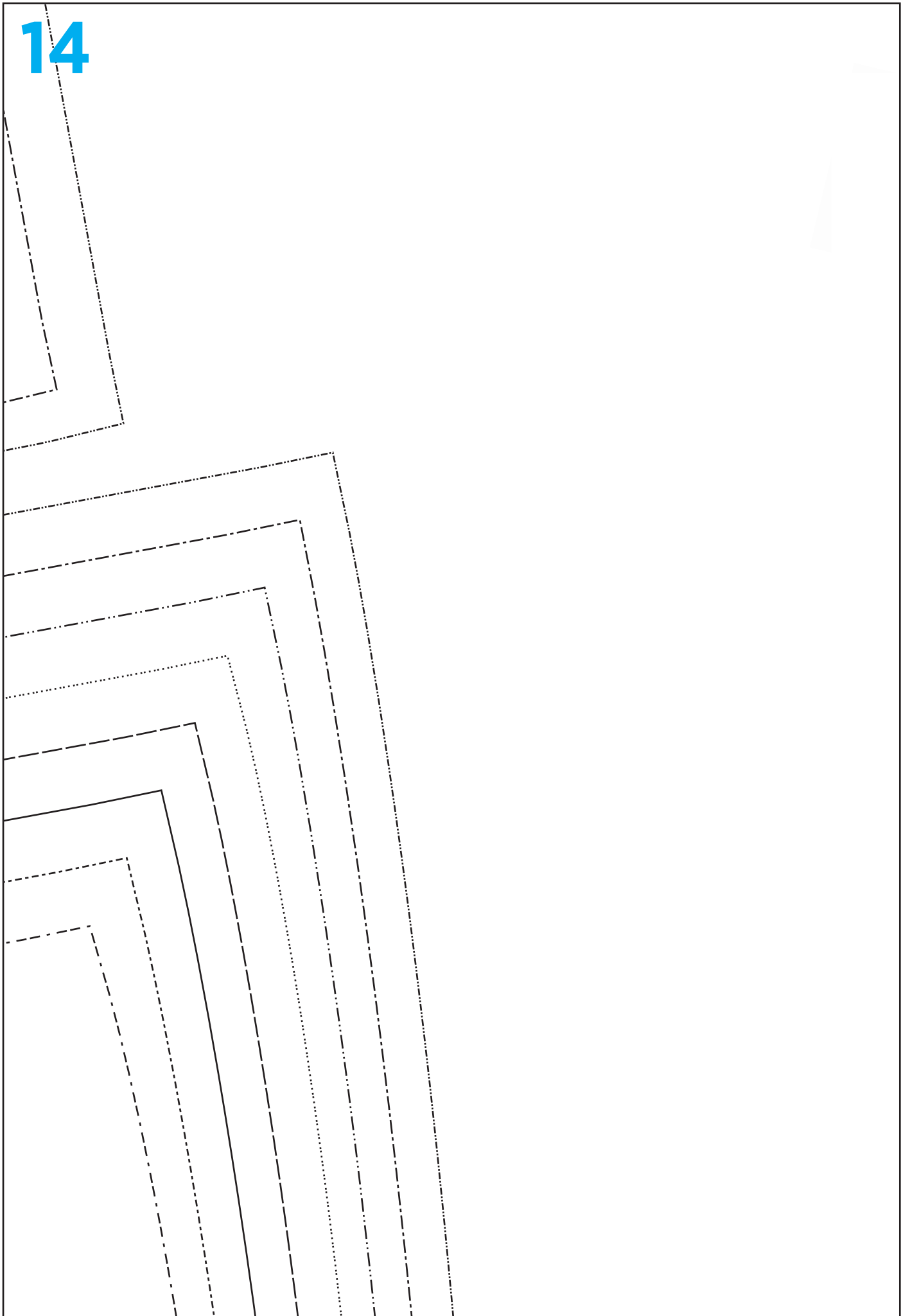


Diagram showing a series of parallel lines for pattern construction. The lines are arranged in two main sections. The upper section consists of a solid top line, followed by a dashed line, a dotted line, and another dashed line. The lower section consists of a solid top line, followed by a dashed line, a dotted line, and another dashed line. On the right side of the lower section, numerical labels are placed between the lines: 10, 12, 14, 16, 18, 20, 22, and 24. The lines are slightly curved, suggesting they are for a curved pattern piece.

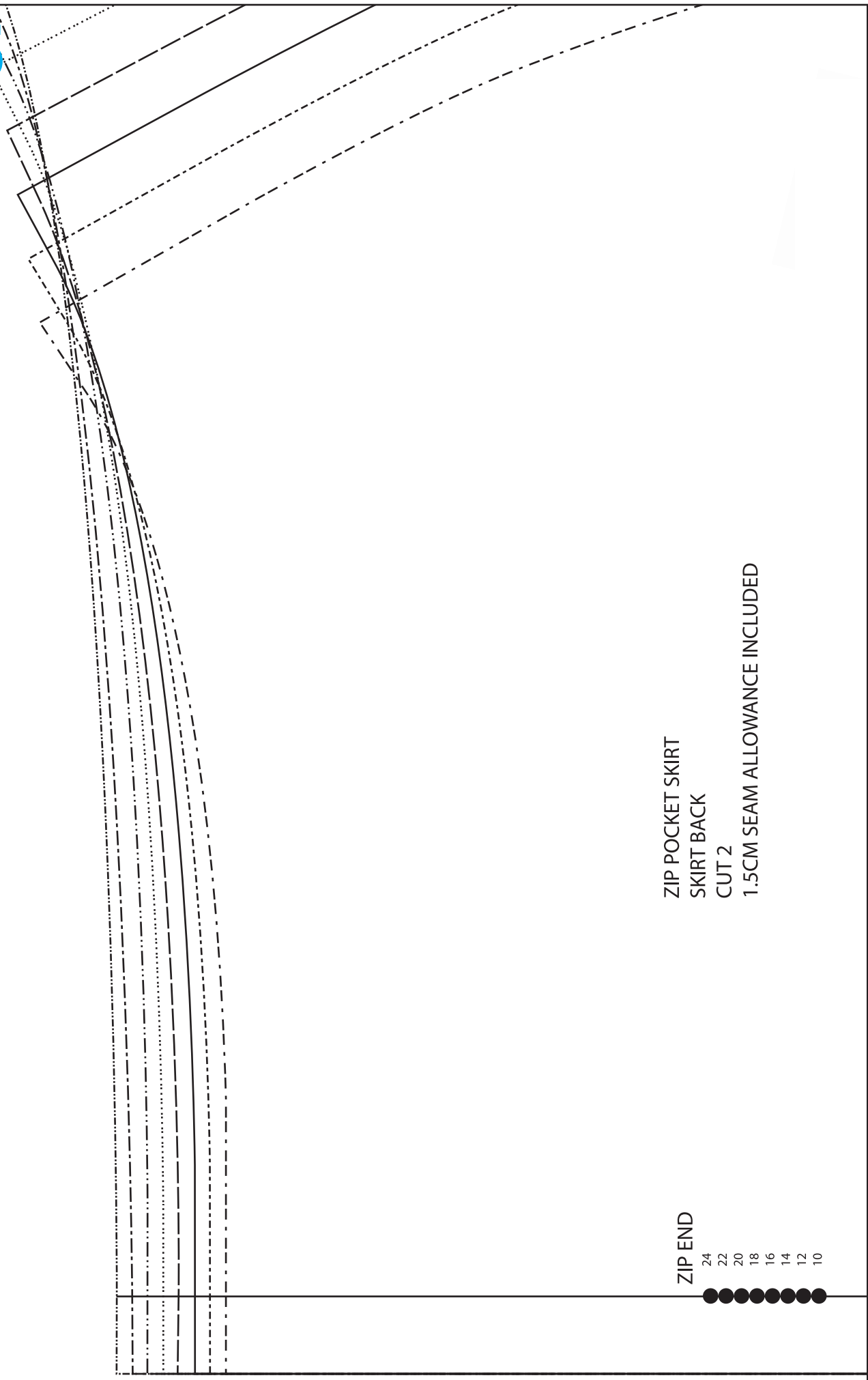
13



14



15



ZIP POCKET SKIRT  
SKIRT BACK  
CUT 2  
1.5CM SEAM ALLOWANCE INCLUDED

ZIP END

- 24
- 22
- 20
- 18
- 16
- 14
- 12
- 10





CENTRE BACK AND GRAINLINE



18

