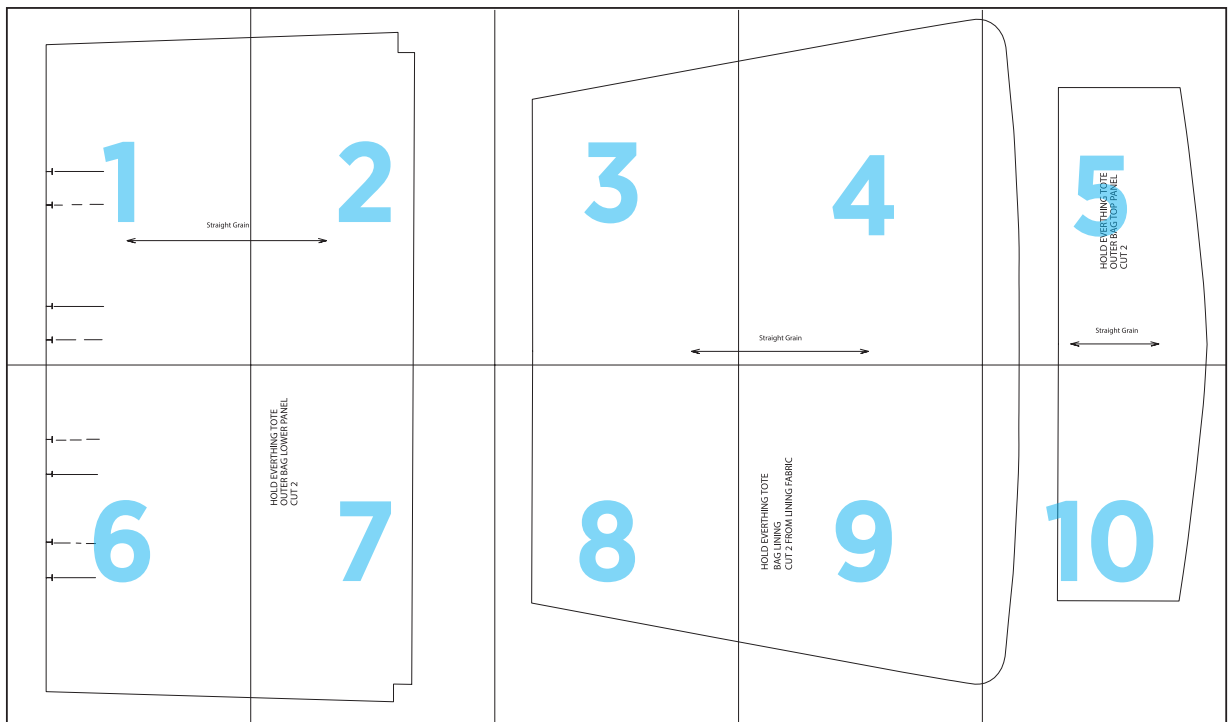
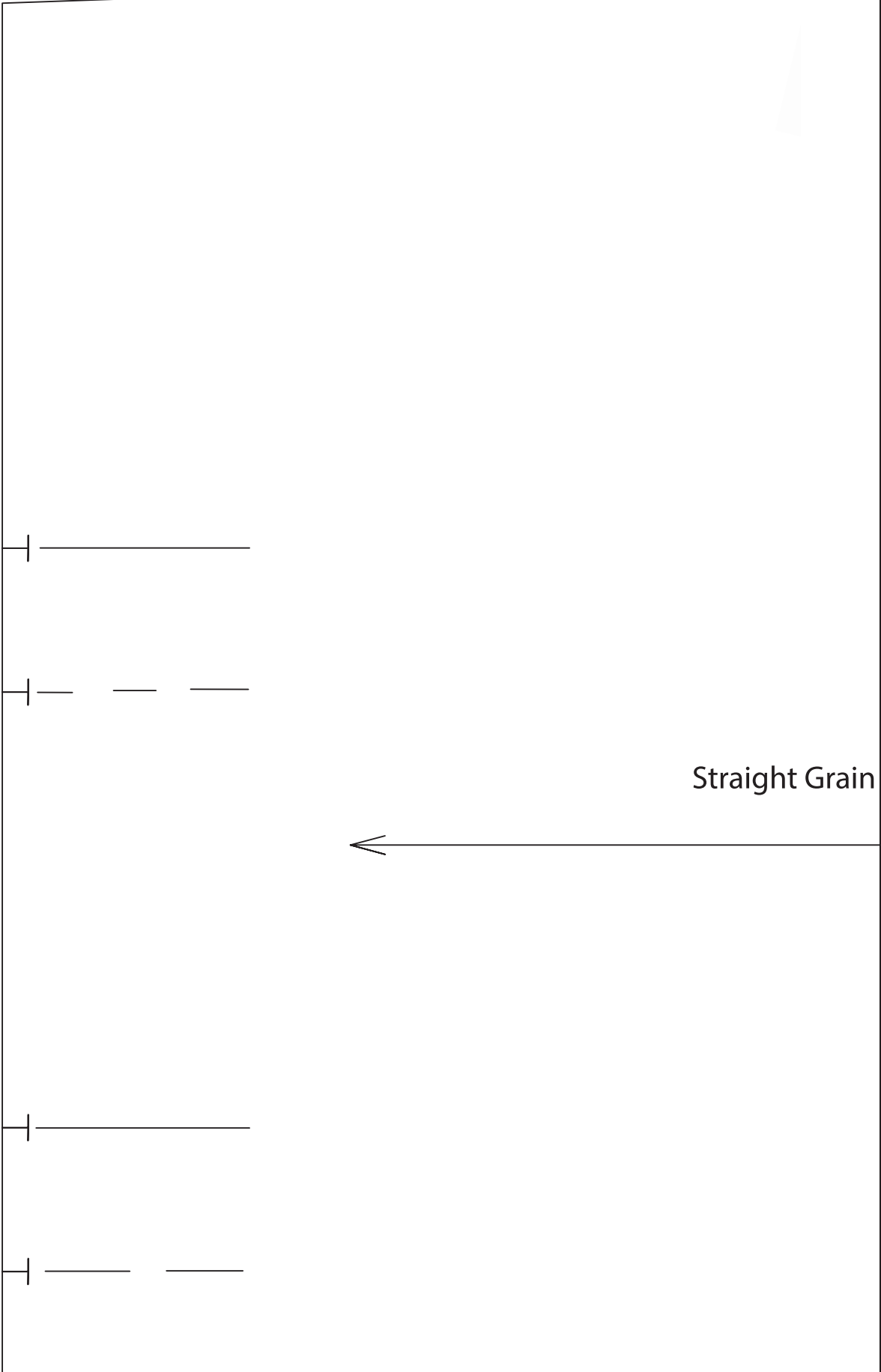


# Hold Everything Tote



1



Straight Grain



2



3



4



Straight Grain



5

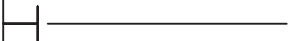
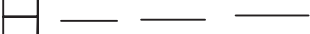


HOLD EVERYTHING TOTE  
OUTER BAG TOP PANEL  
CUT 2

Straight Grain



6



7

HOLD EVERYTHING TOTE  
OUTER BAG LOWER PANEL  
CUT 2





8



9

HOLD EVERYTHING TOGETHER  
BAG LINING  
CUT 2 FROM LINING FABRIC



10

