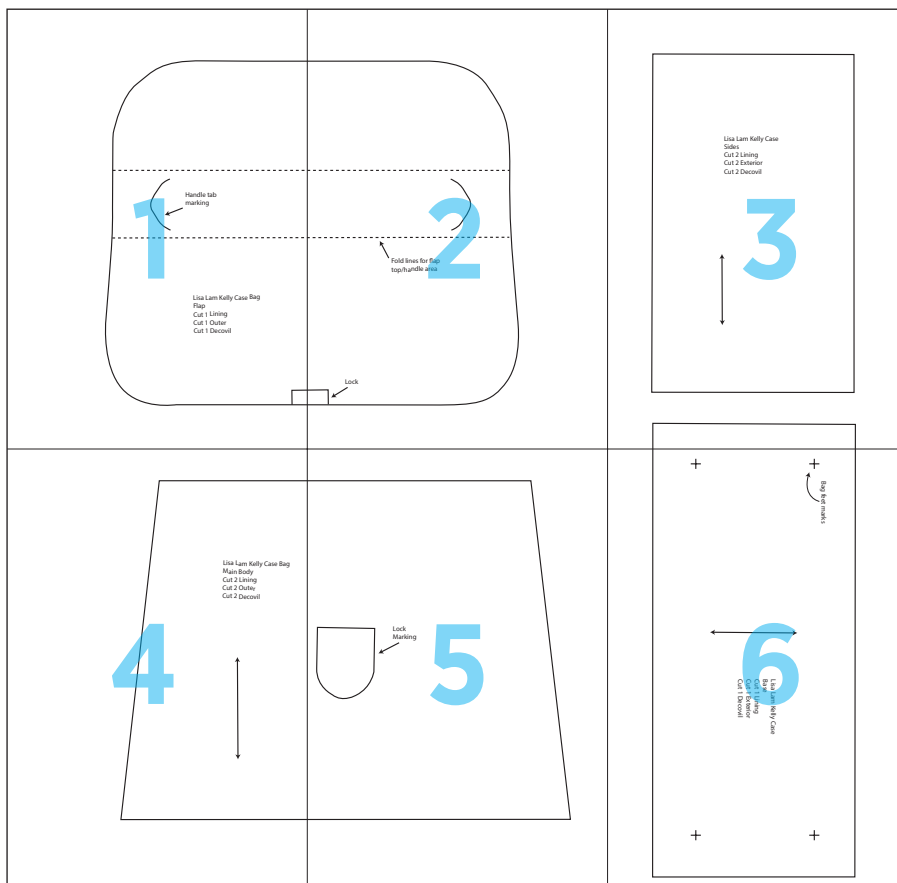
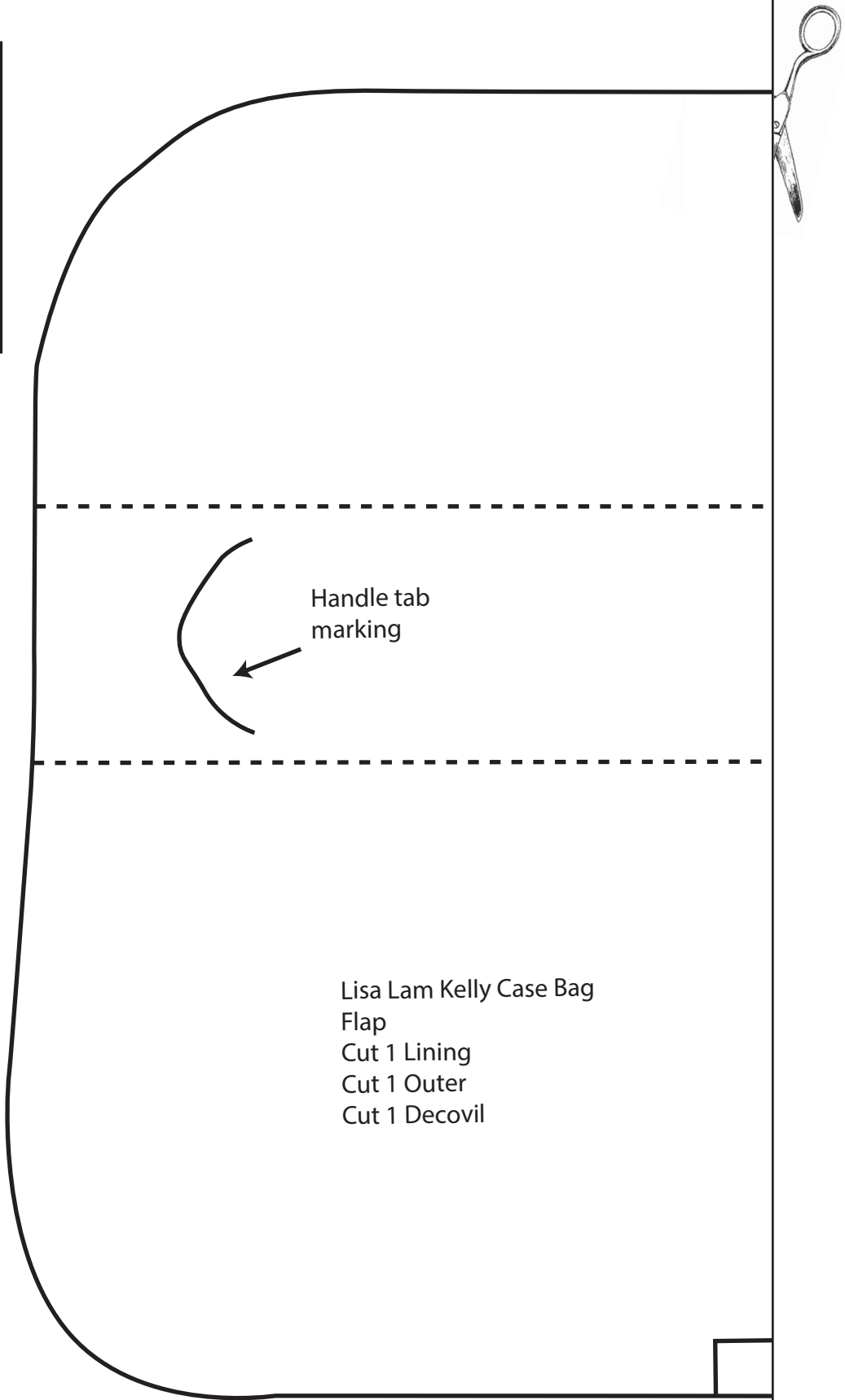
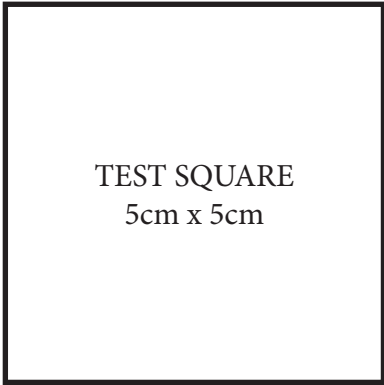


Lisa Lam Kelly Case Bag



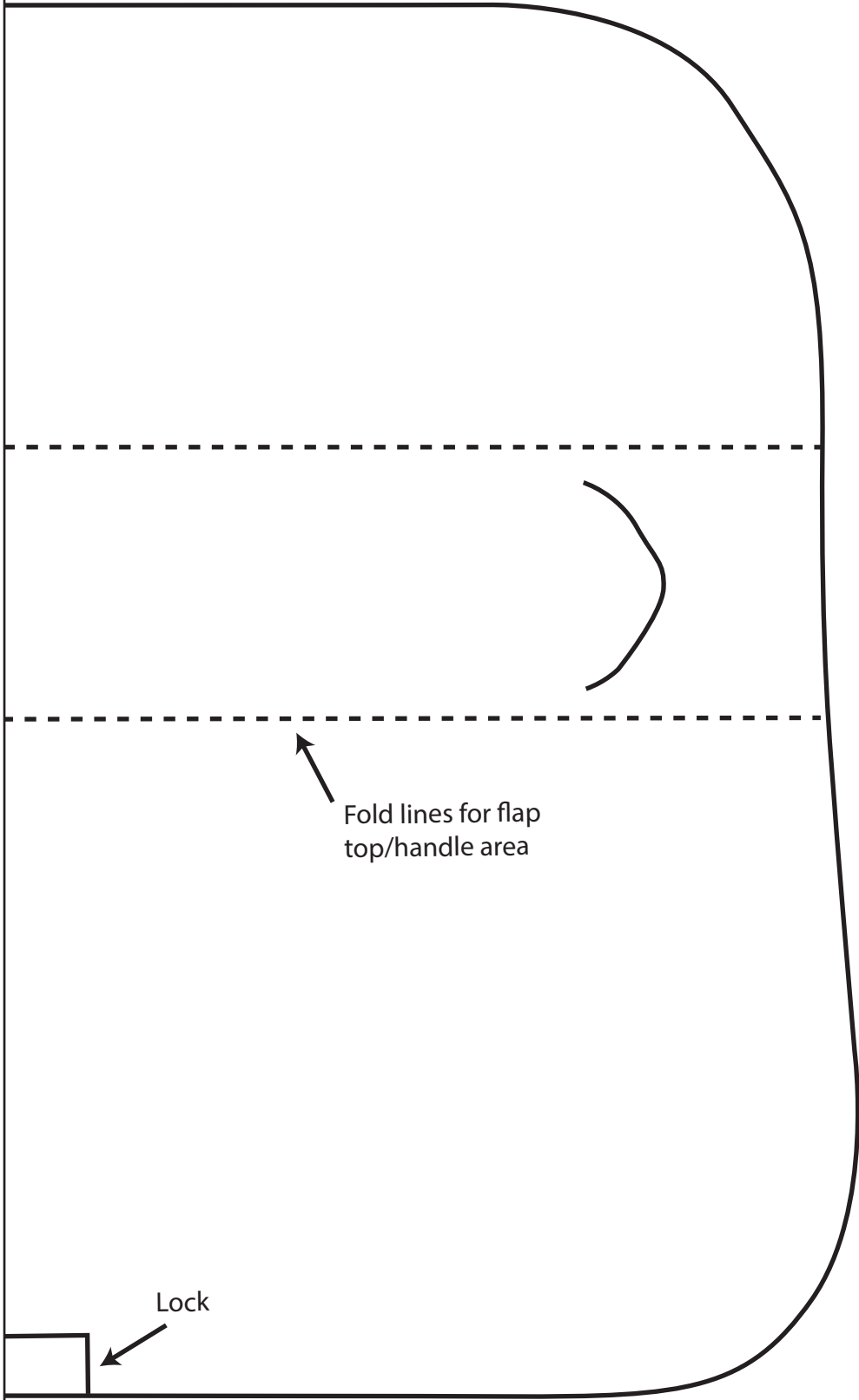
1



Handle tab
marking

Lisa Lam Kelly Case Bag
Flap
Cut 1 Lining
Cut 1 Outer
Cut 1 Decovil

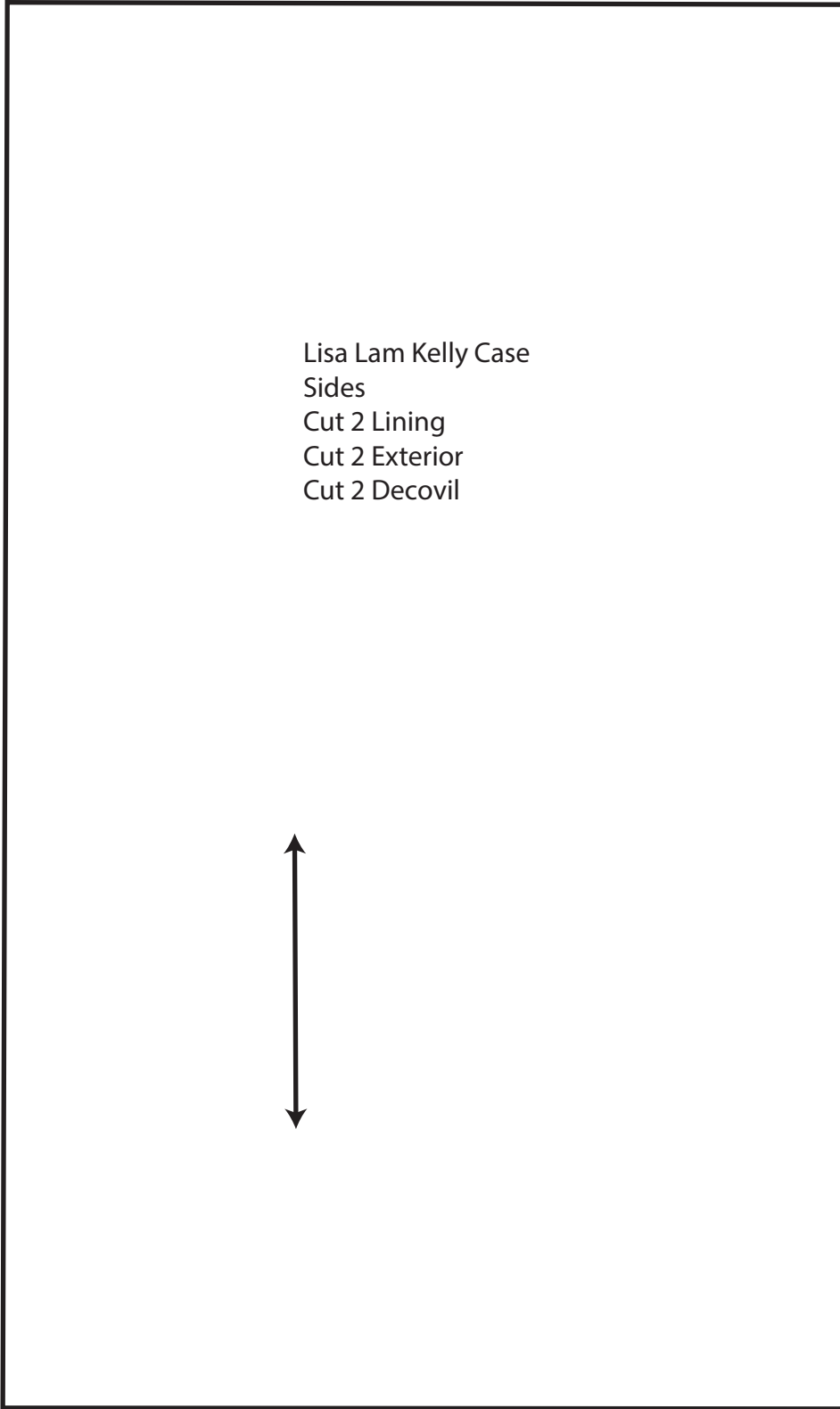
2



Fold lines for flap
top/handle area

Lock

3



Lisa Lam Kelly Case
Sides
Cut 2 Lining
Cut 2 Exterior
Cut 2 Decovil



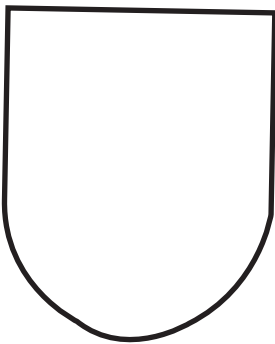
4



Lisa Lam Kelly Case Bag
Main Body
Cut 2 Lining
Cut 2 Outer
Cut 2 Decovil



5



Lock
Marking





+

Bag feet marks

+



Lisa Lam Kelly Case
Base
Cut 1 Lining
Cut 1 Exterior
Cut 1 Decovil

+

+

6