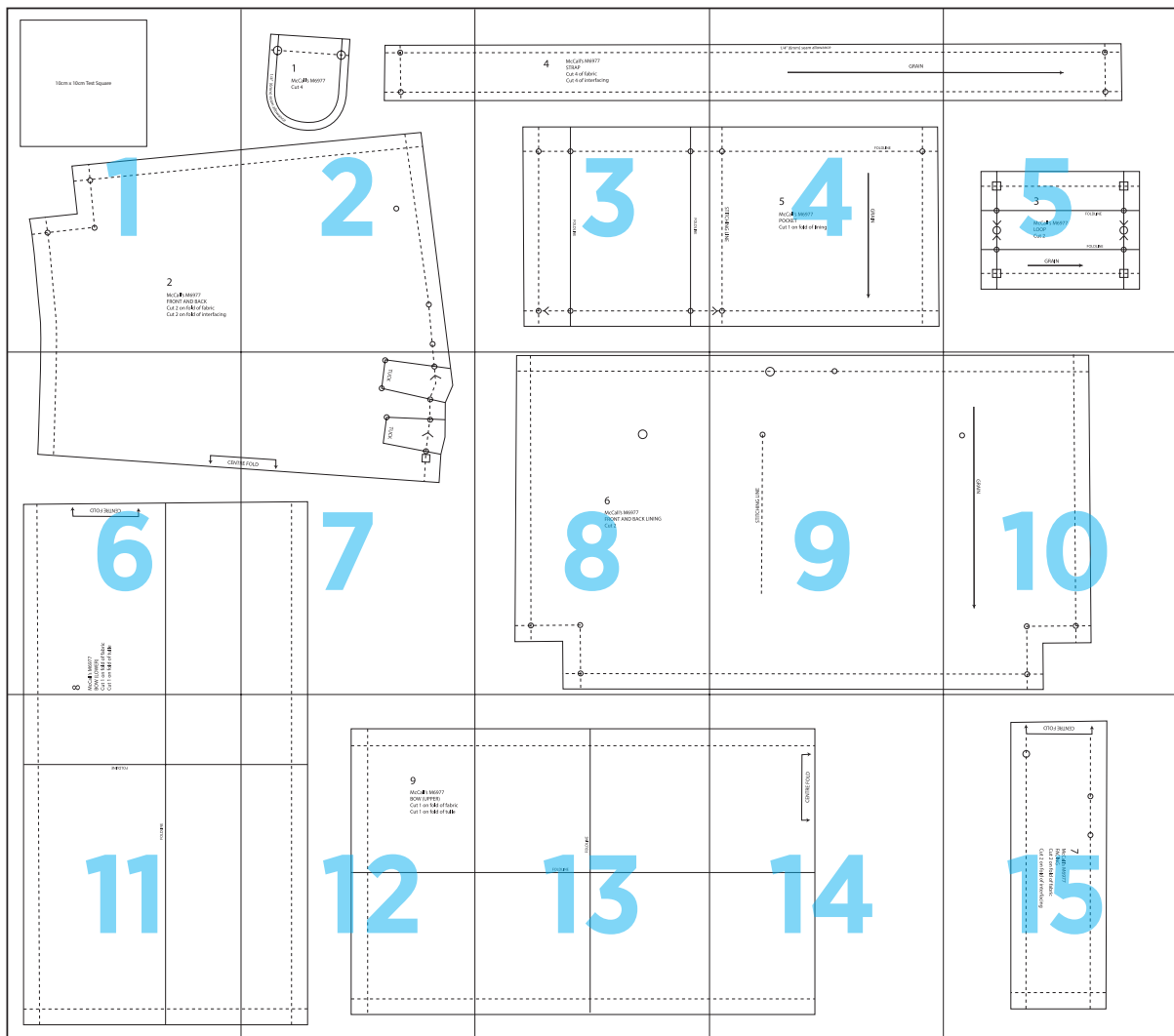
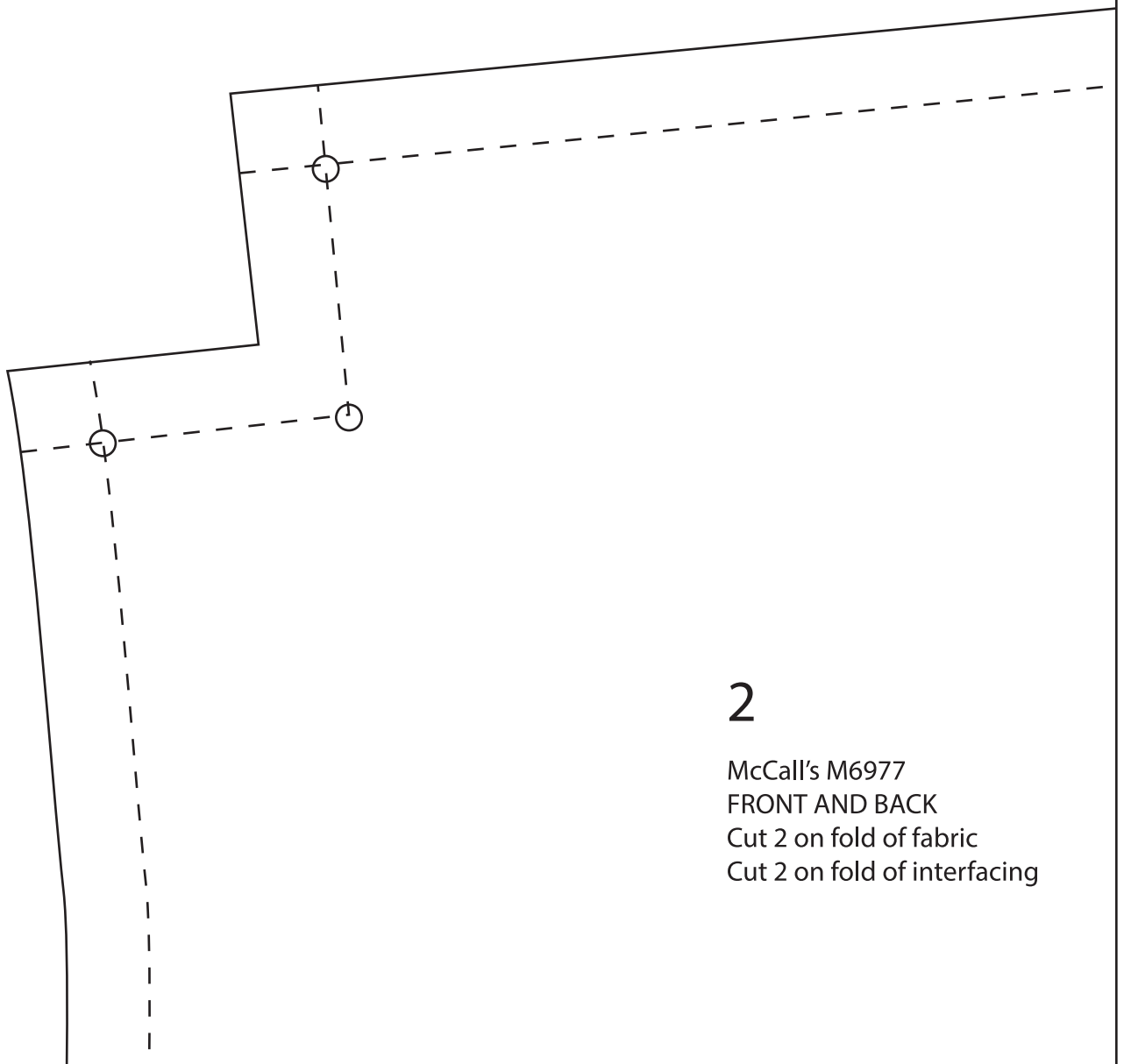
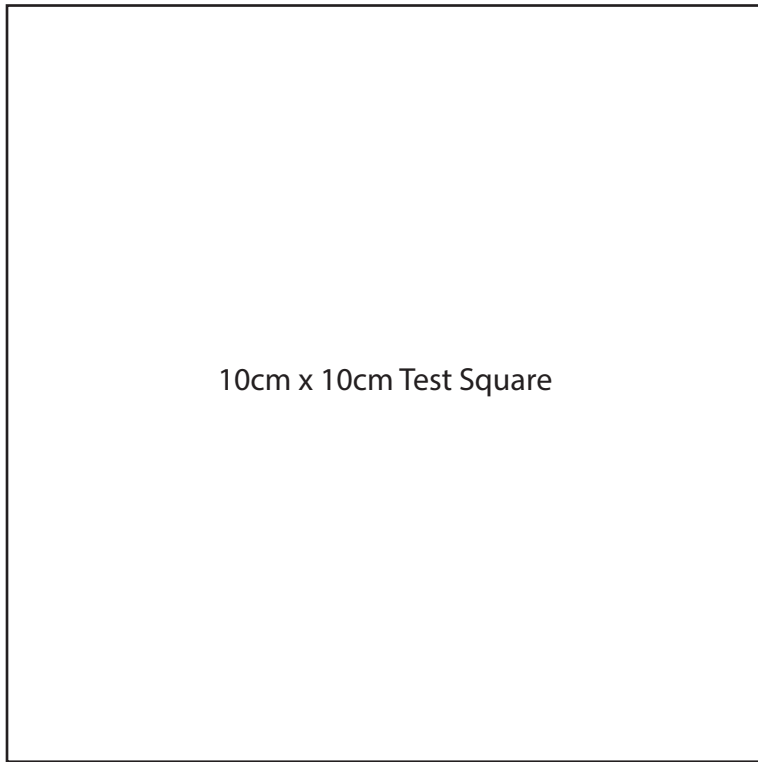


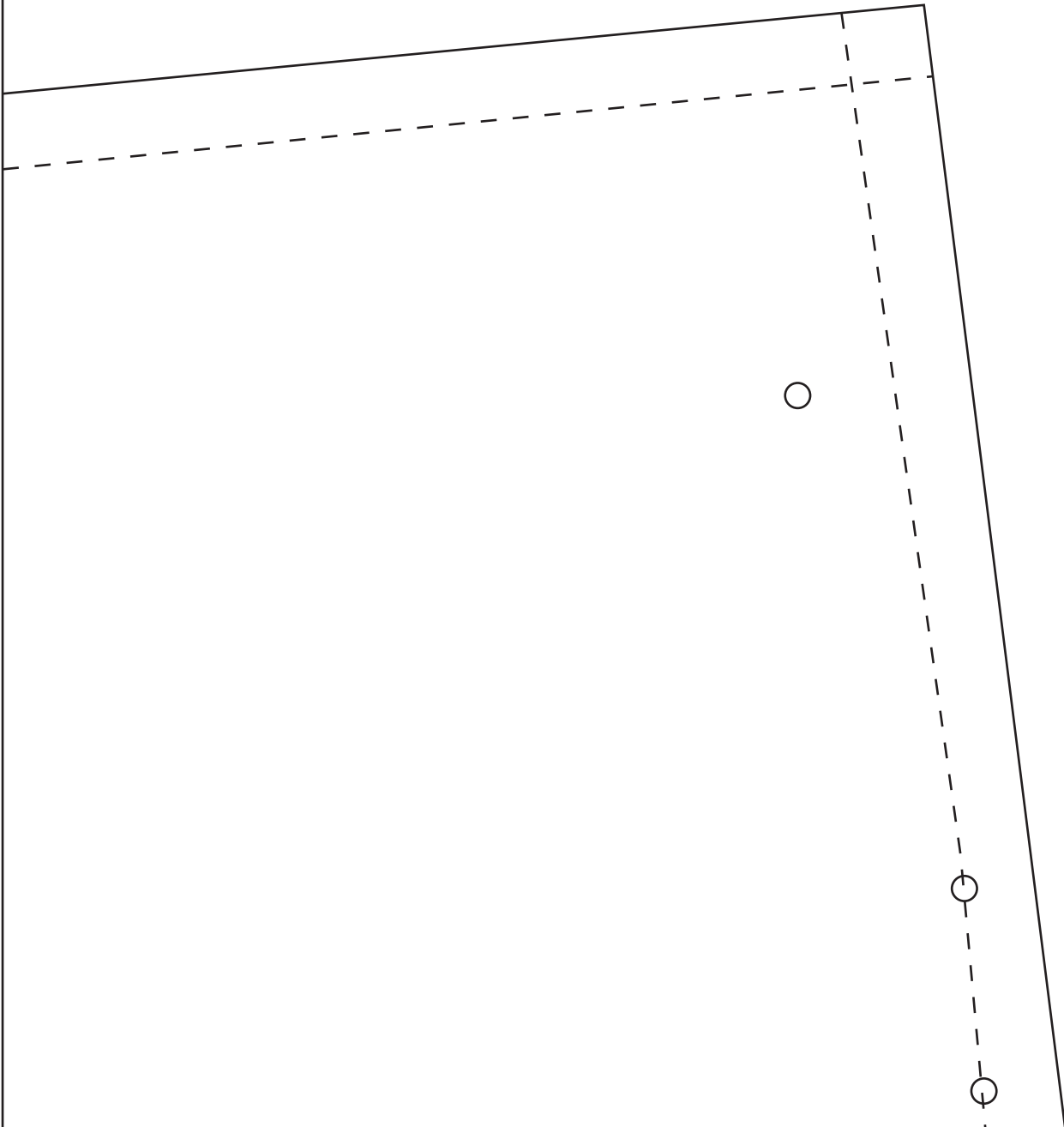
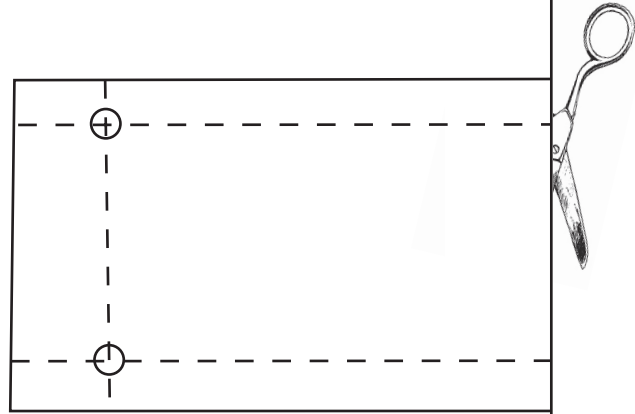
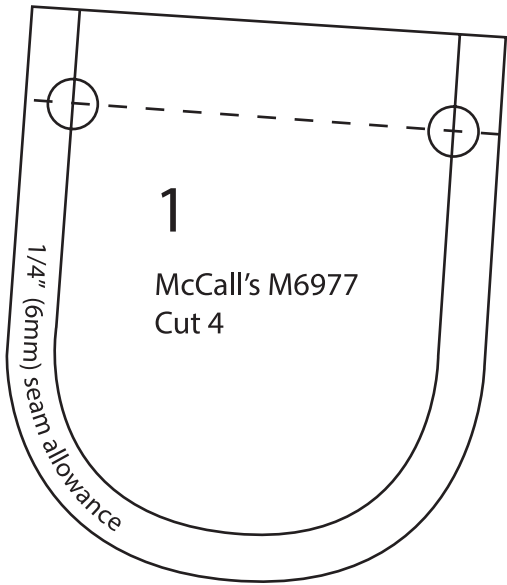
# Bow Bag



1



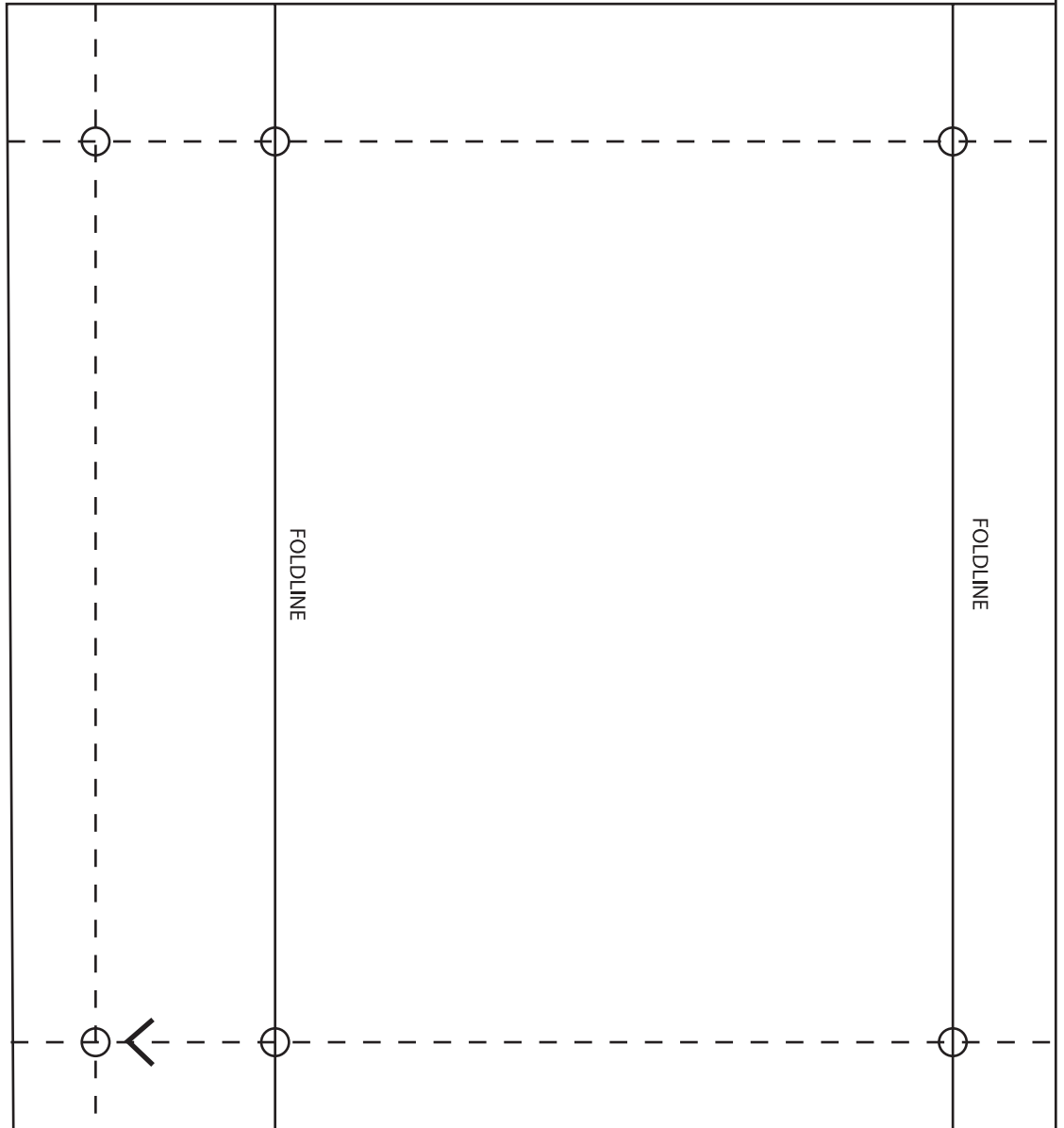
2



3

4

McCall's M6977  
STRAP  
Cut 4 of fabric  
Cut 4 of interfacing



4

1/4" (6mm) seam allowance

GRAIN



FOLDLINE

5

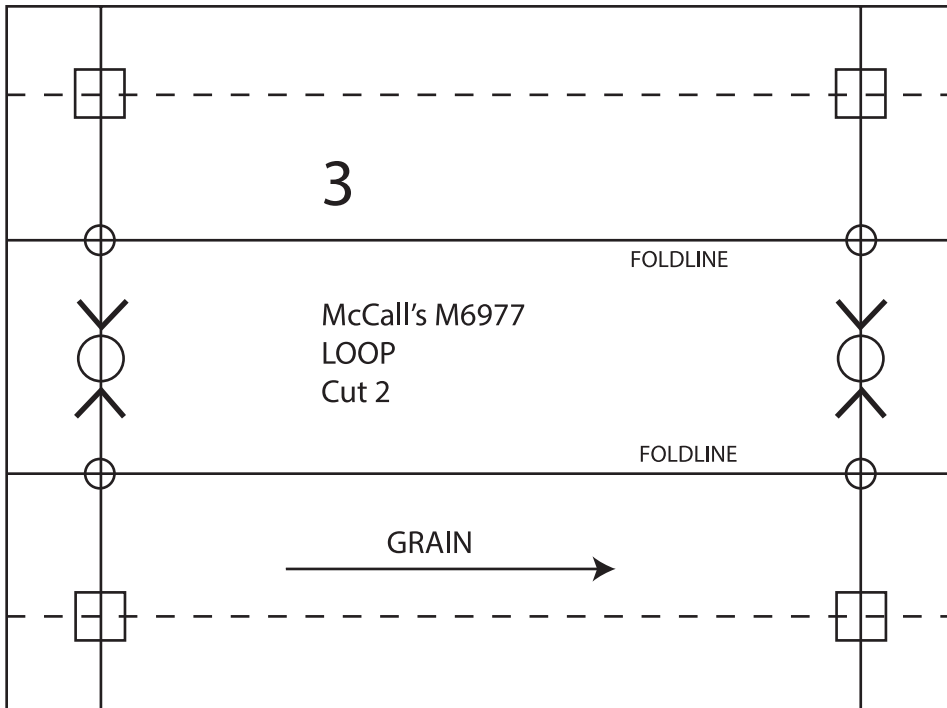
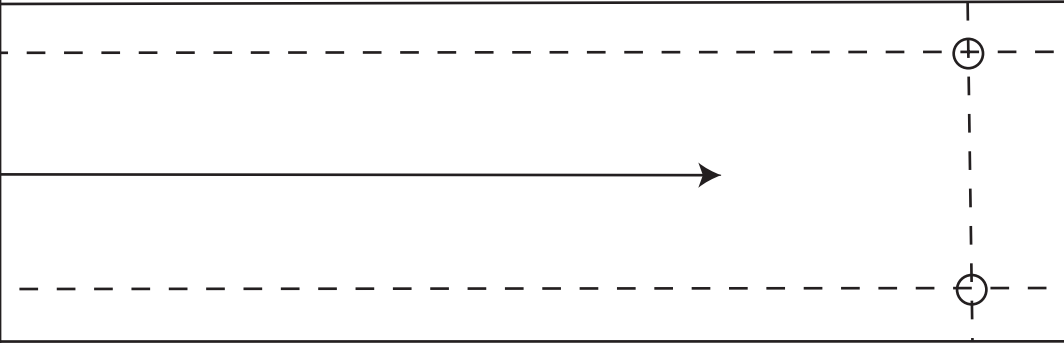
McCall's M6977  
POCKET  
Cut 1 on fold of lining

GRAIN

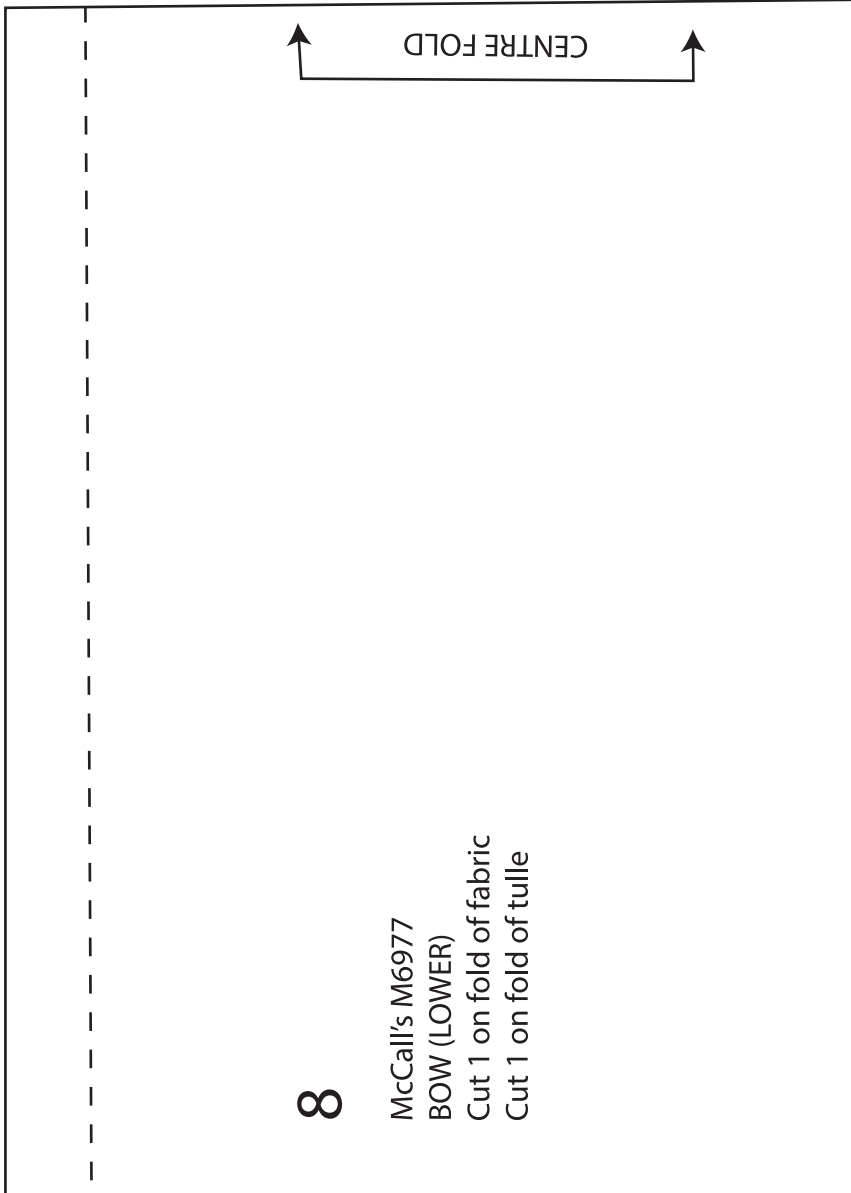
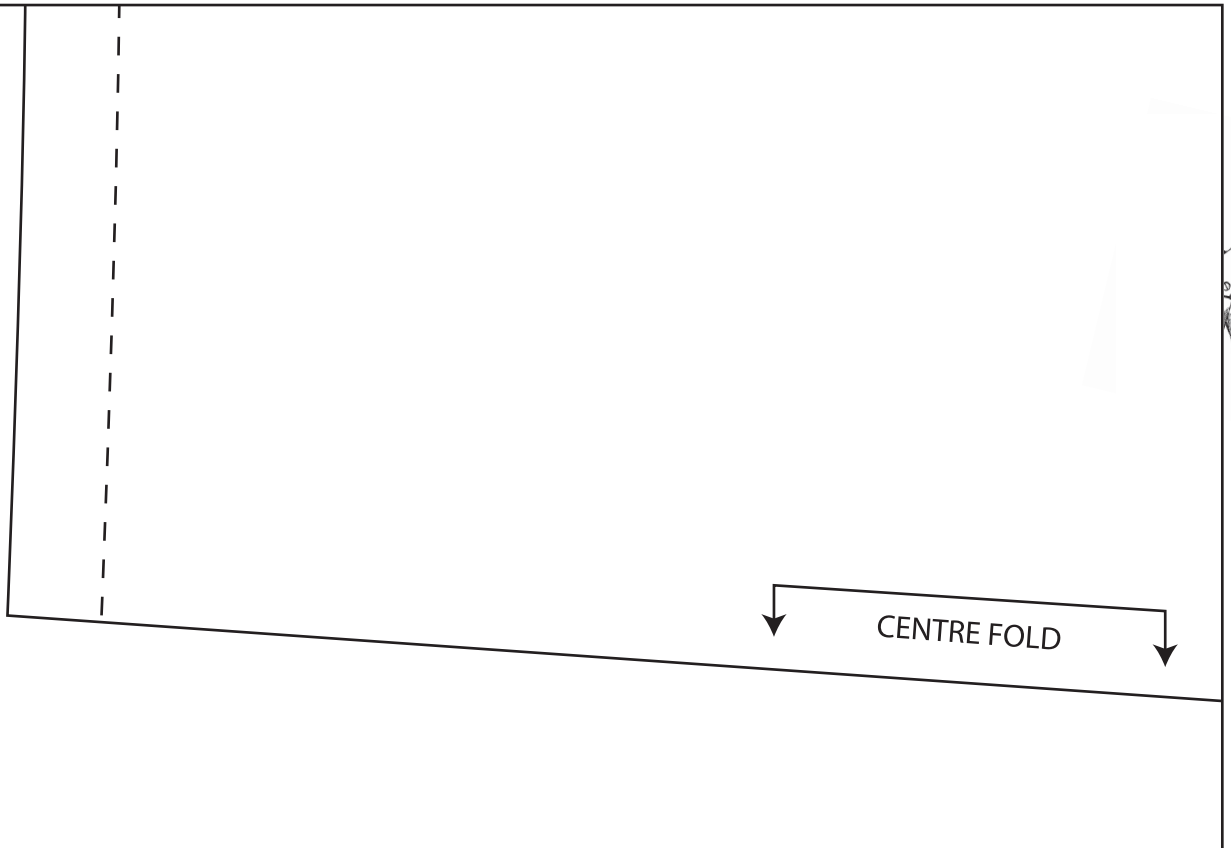
STITCHING LINE



5



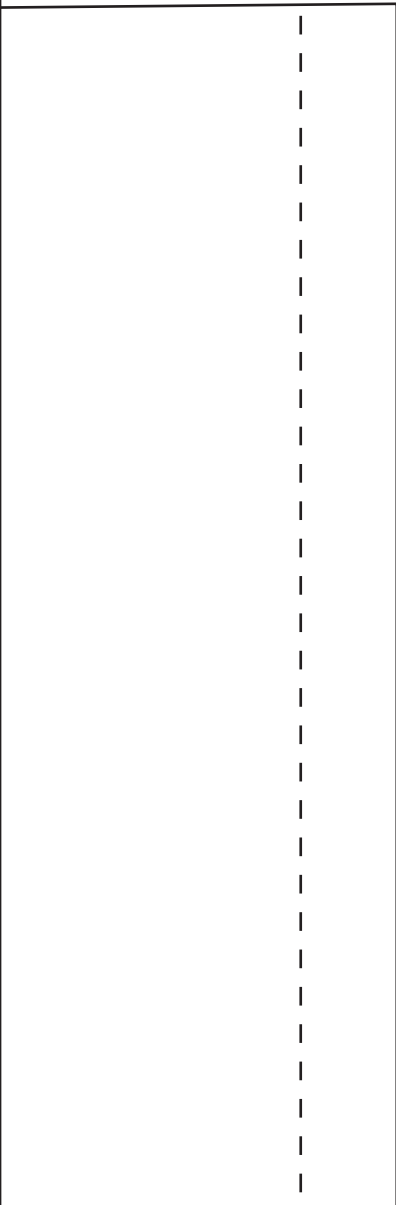
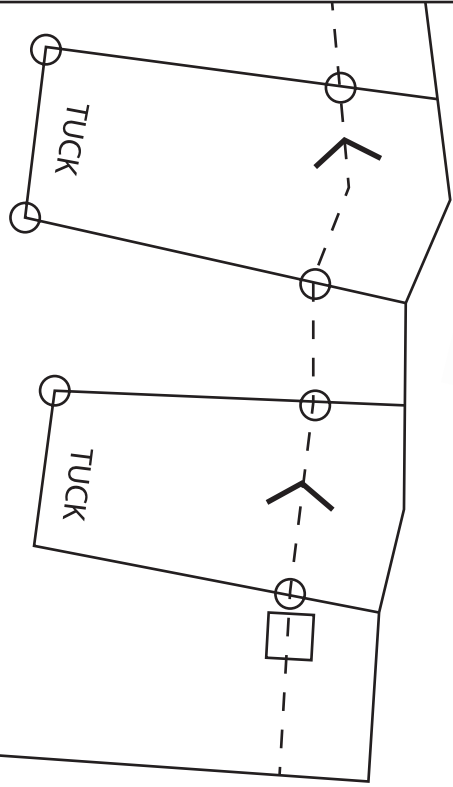
6



8

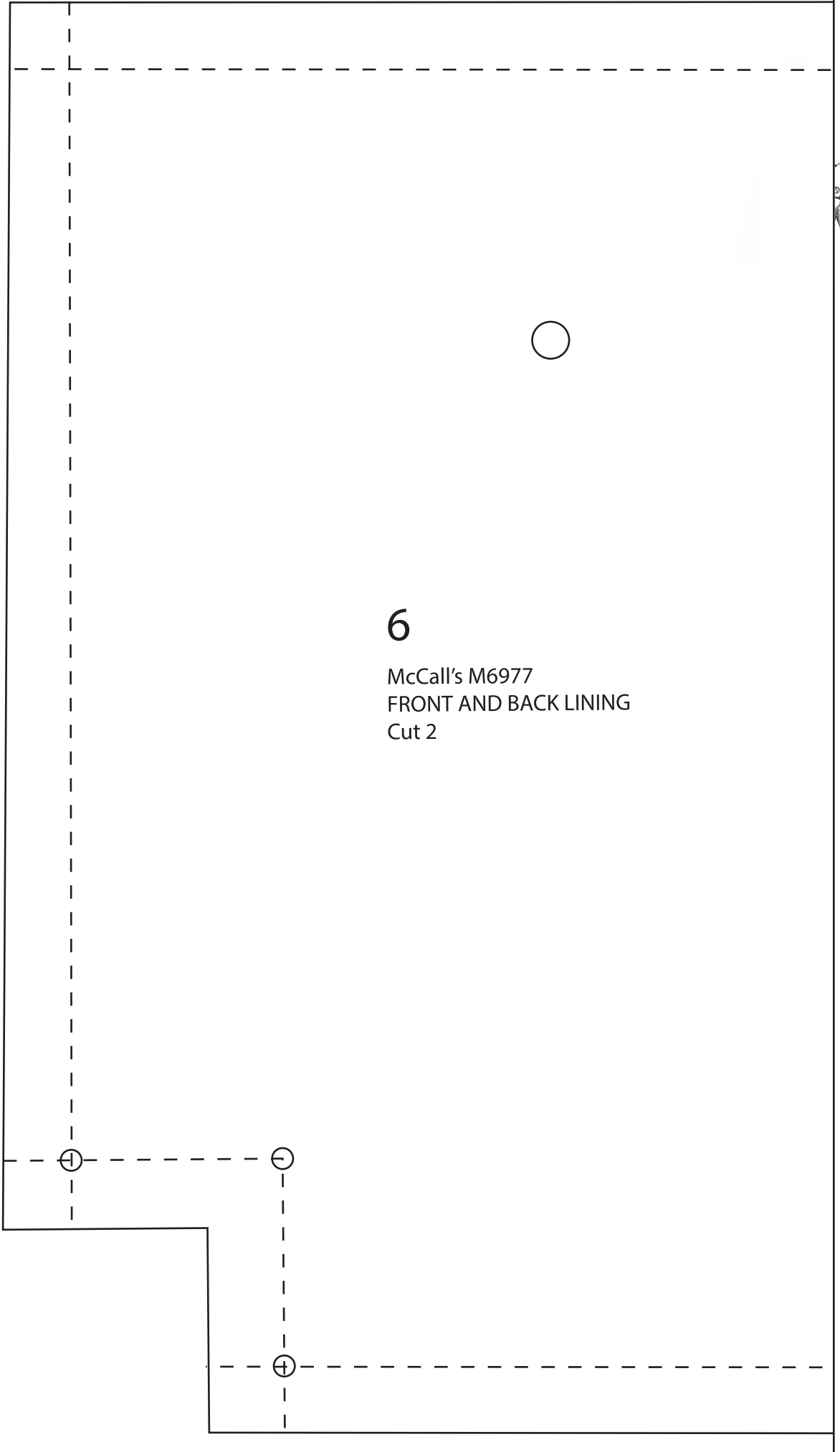
McCall's M6977  
BOW (LOWER)  
Cut 1 on fold of fabric  
Cut 1 on fold of tulle

7





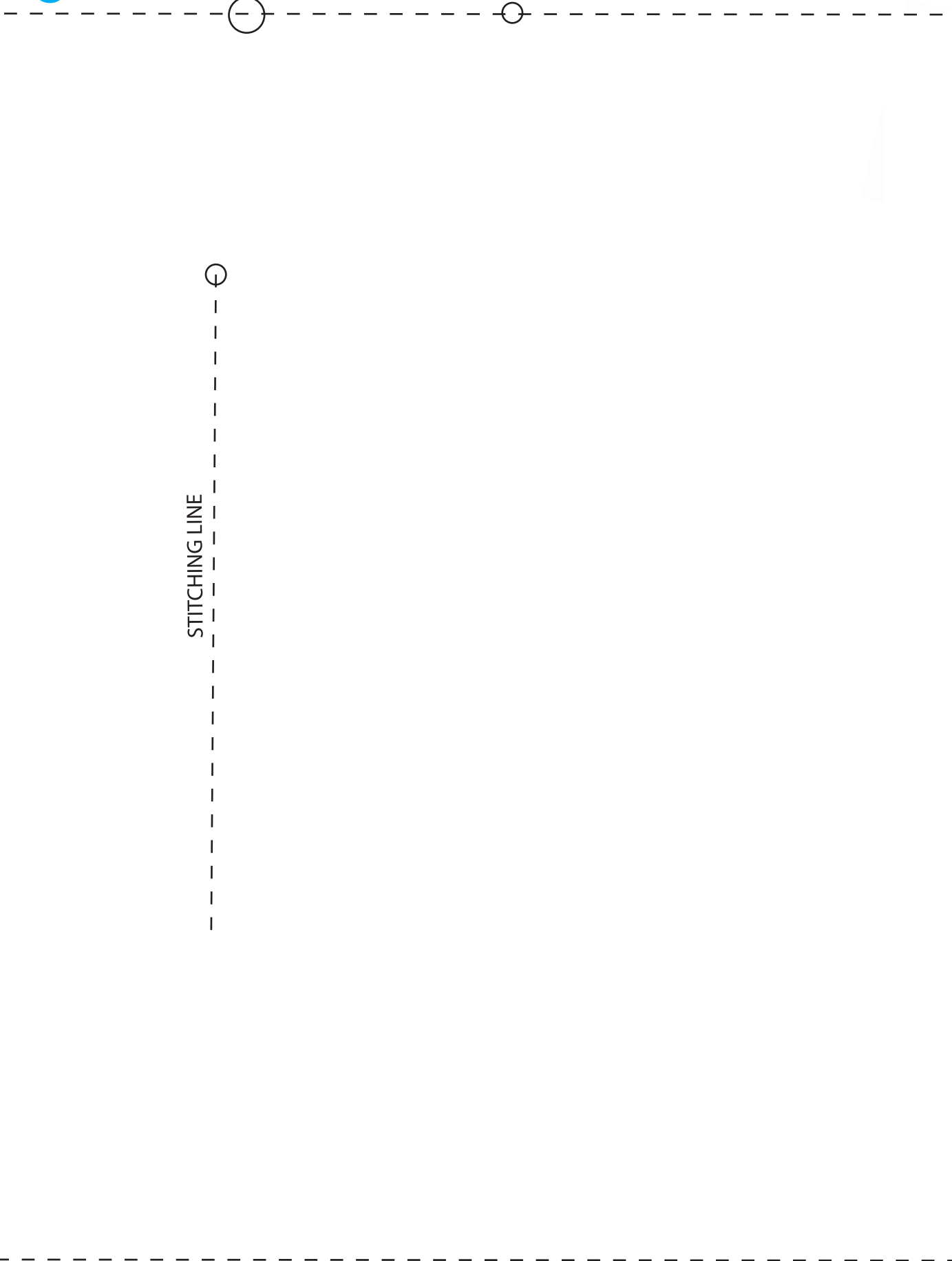
8



6

McCall's M6977  
FRONT AND BACK LINING  
Cut 2

9



10



GRAIN





FOLDLINE

FOLDLINE

12

9

McCall's M6977  
BOW (UPPER)  
Cut 1 on fold of fabric  
Cut 1 on fold of tulle



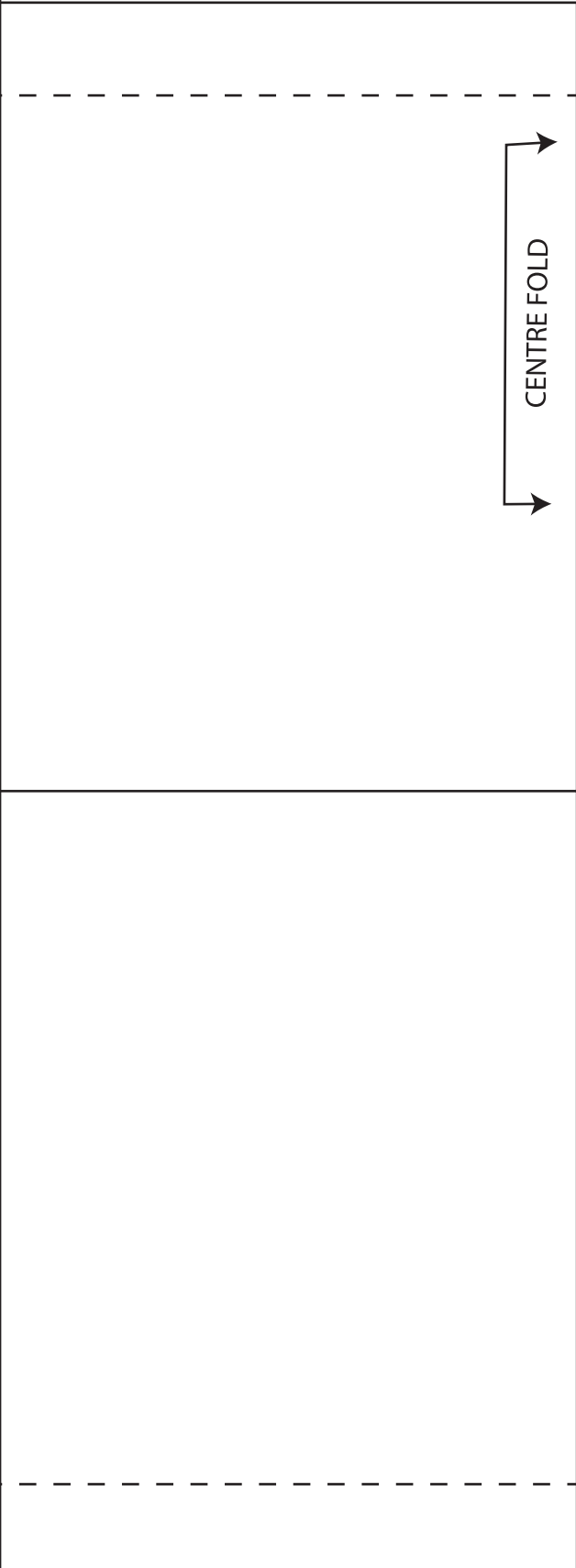
13

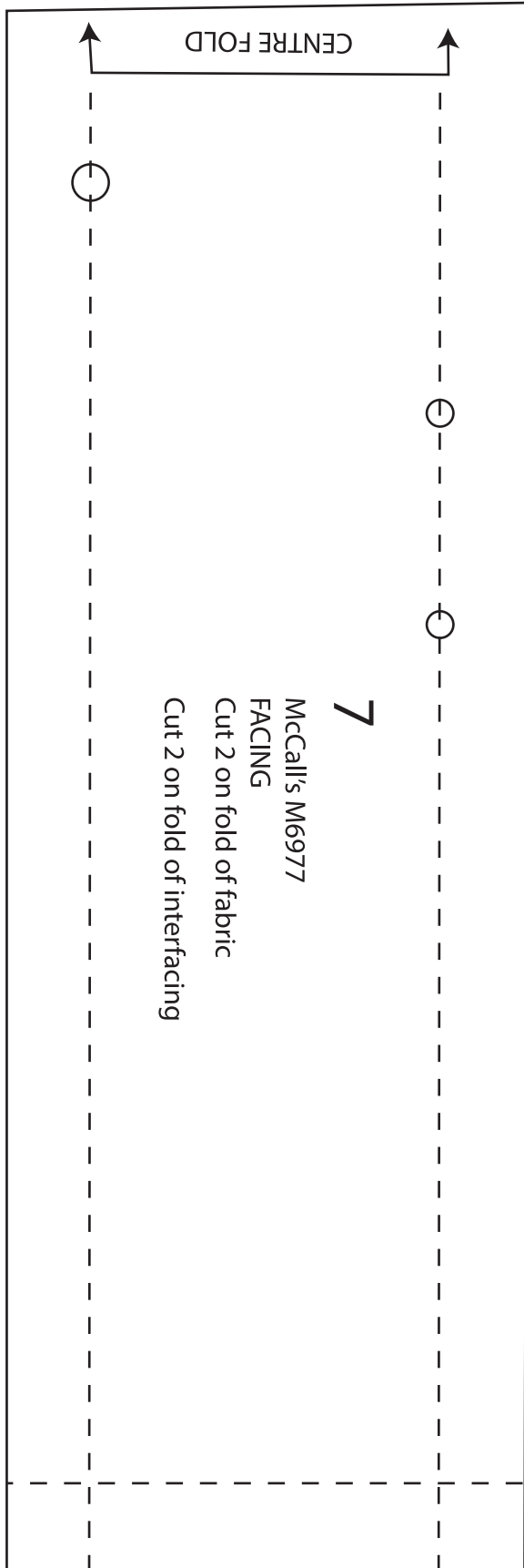


FOLDLINE

FOLDLINE

14





7

McCall's M6977  
FACING  
Cut 2 on fold of fabric  
Cut 2 on fold of interfacing