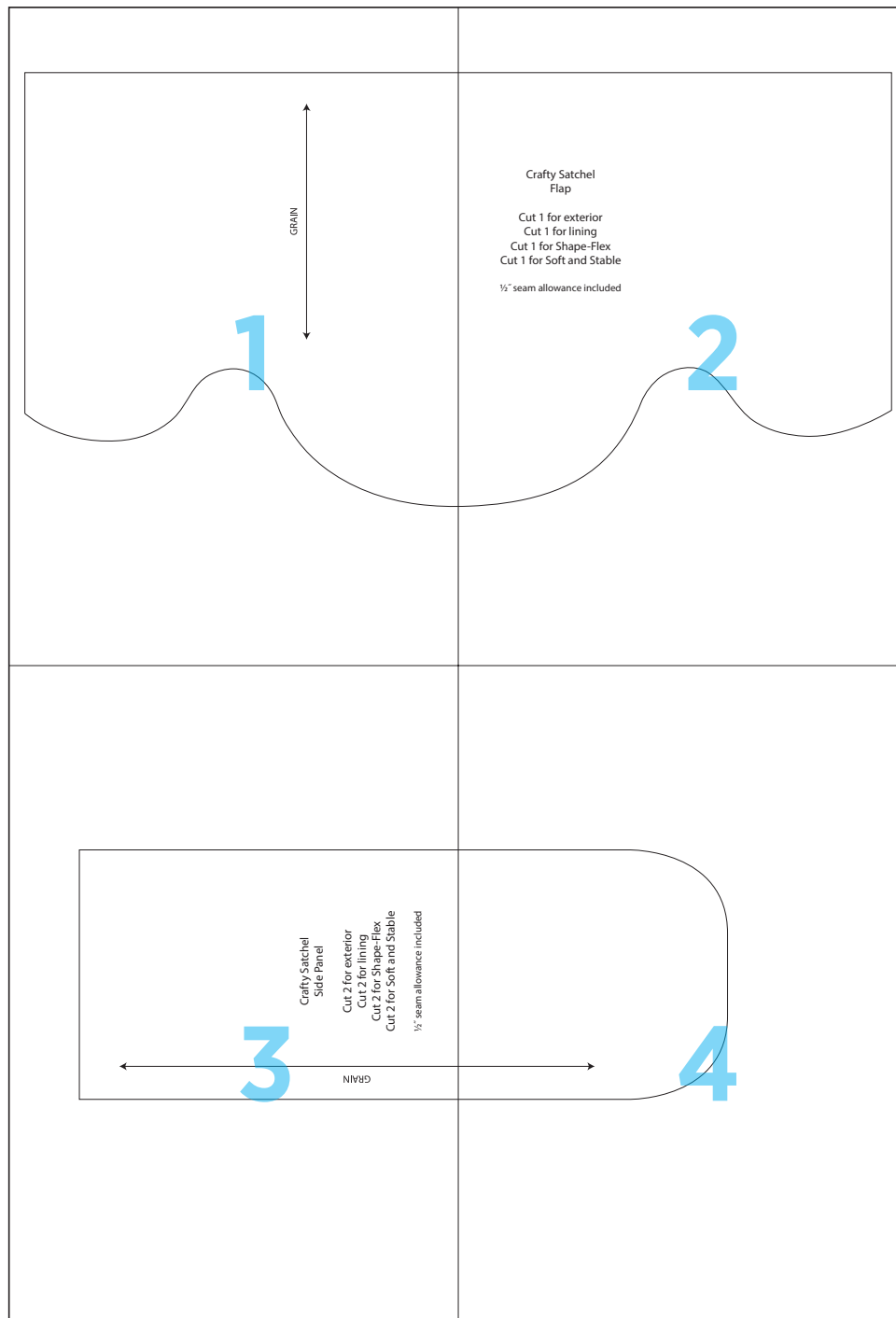


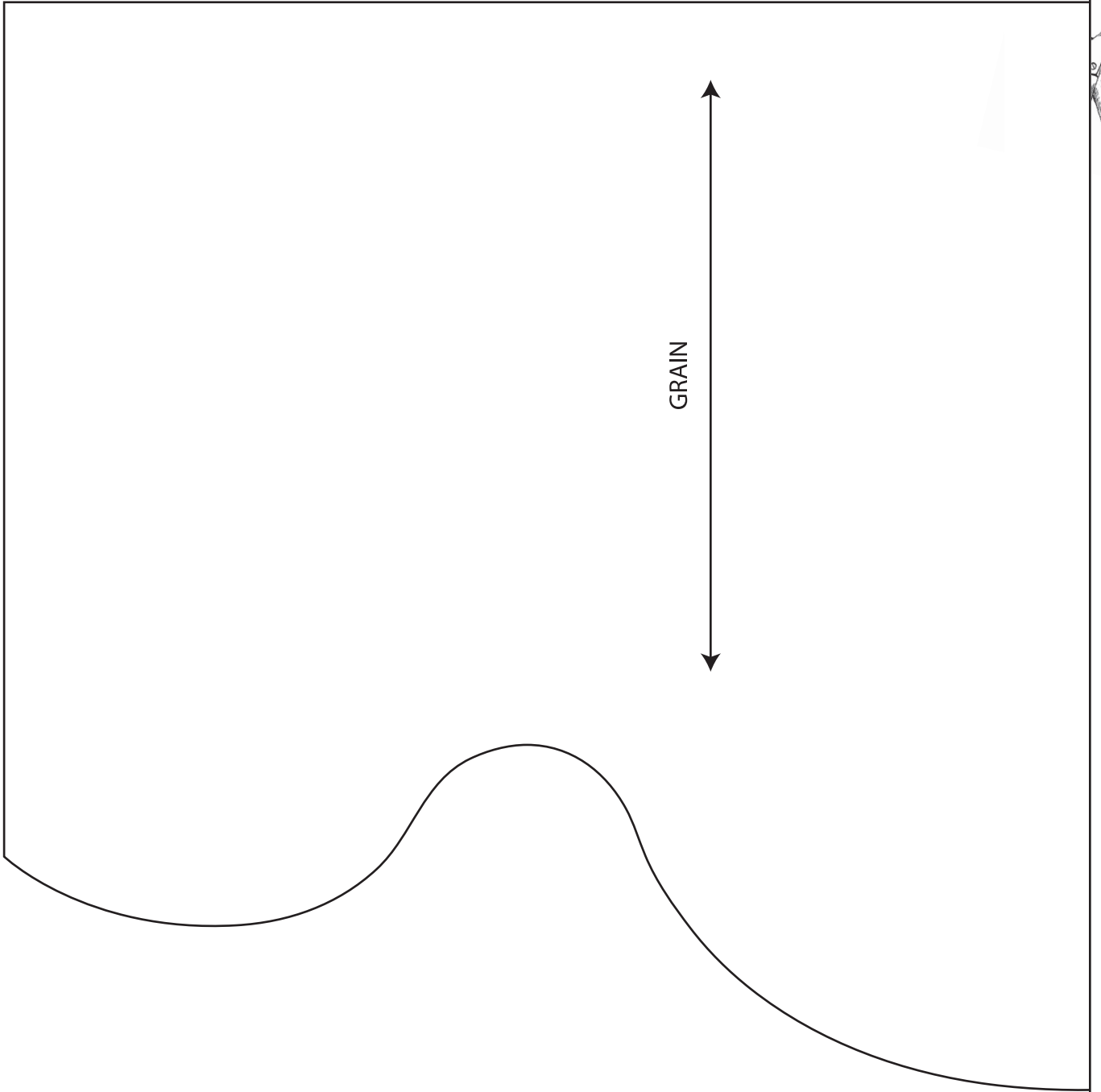
Crafty Satchel



1



GRAIN

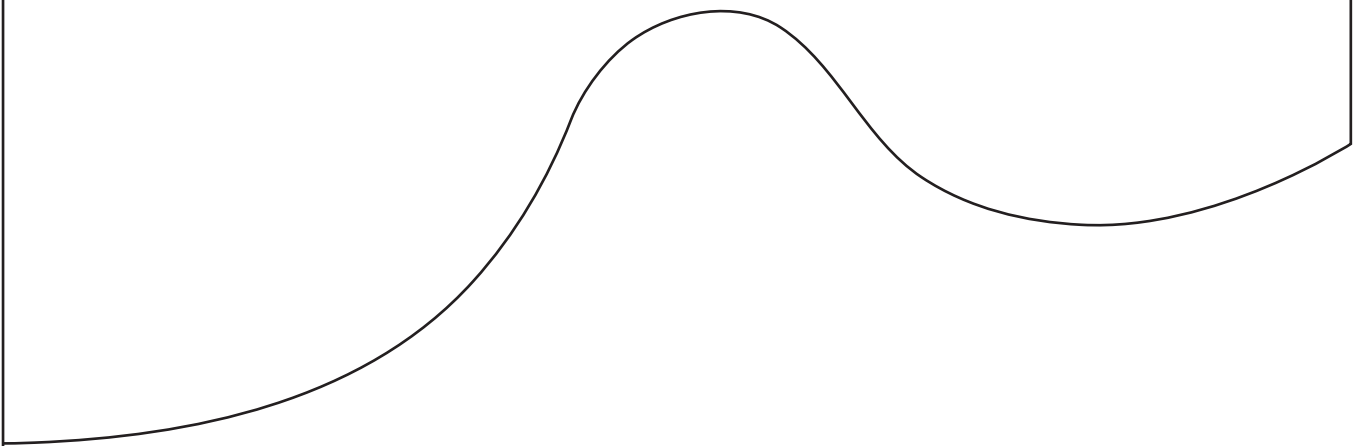




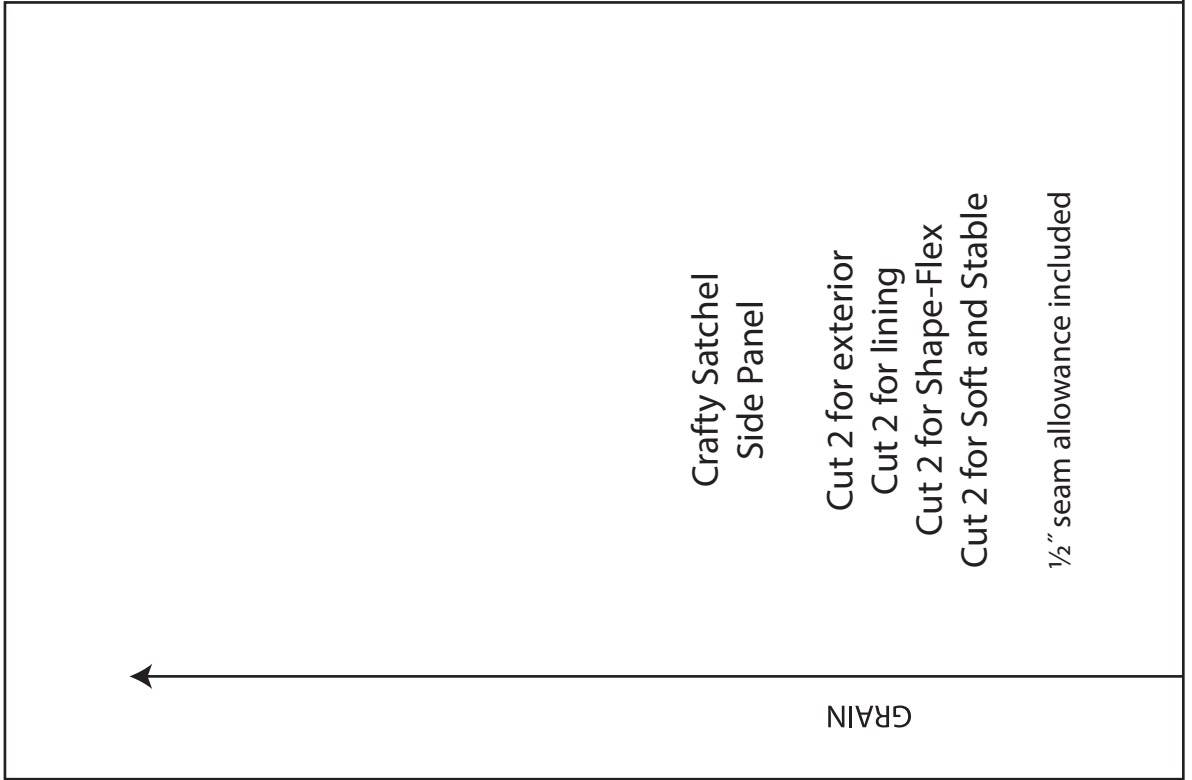
Crafty Satchel Flap

Cut 1 for exterior
Cut 1 for lining
Cut 1 for Shape-Flex
Cut 1 for Soft and Stable

½" seam allowance included



3



Crafty Satchel
Side Panel

Cut 2 for exterior
Cut 2 for lining
Cut 2 for Shape-Flex
Cut 2 for Soft and Stable
1/2" seam allowance included

GRAIN



4

