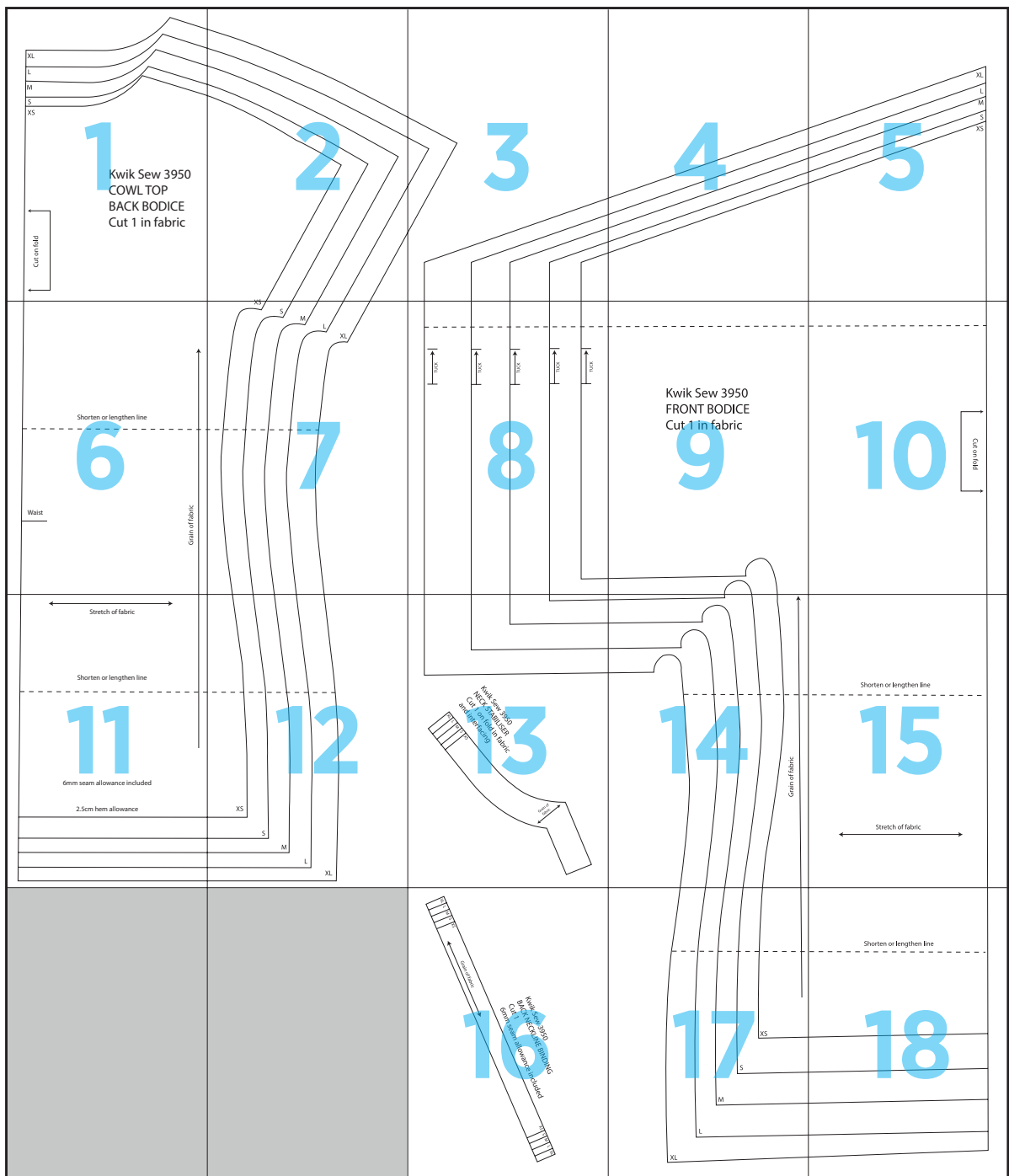
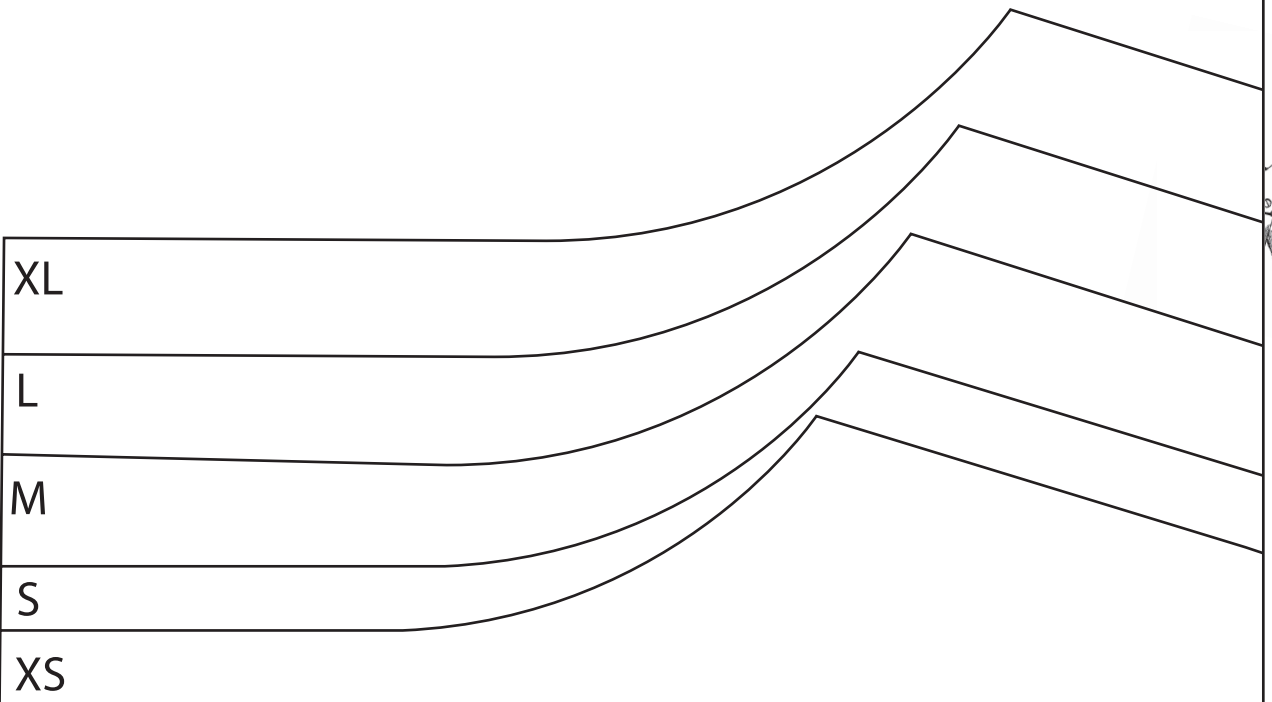


Cowl Top



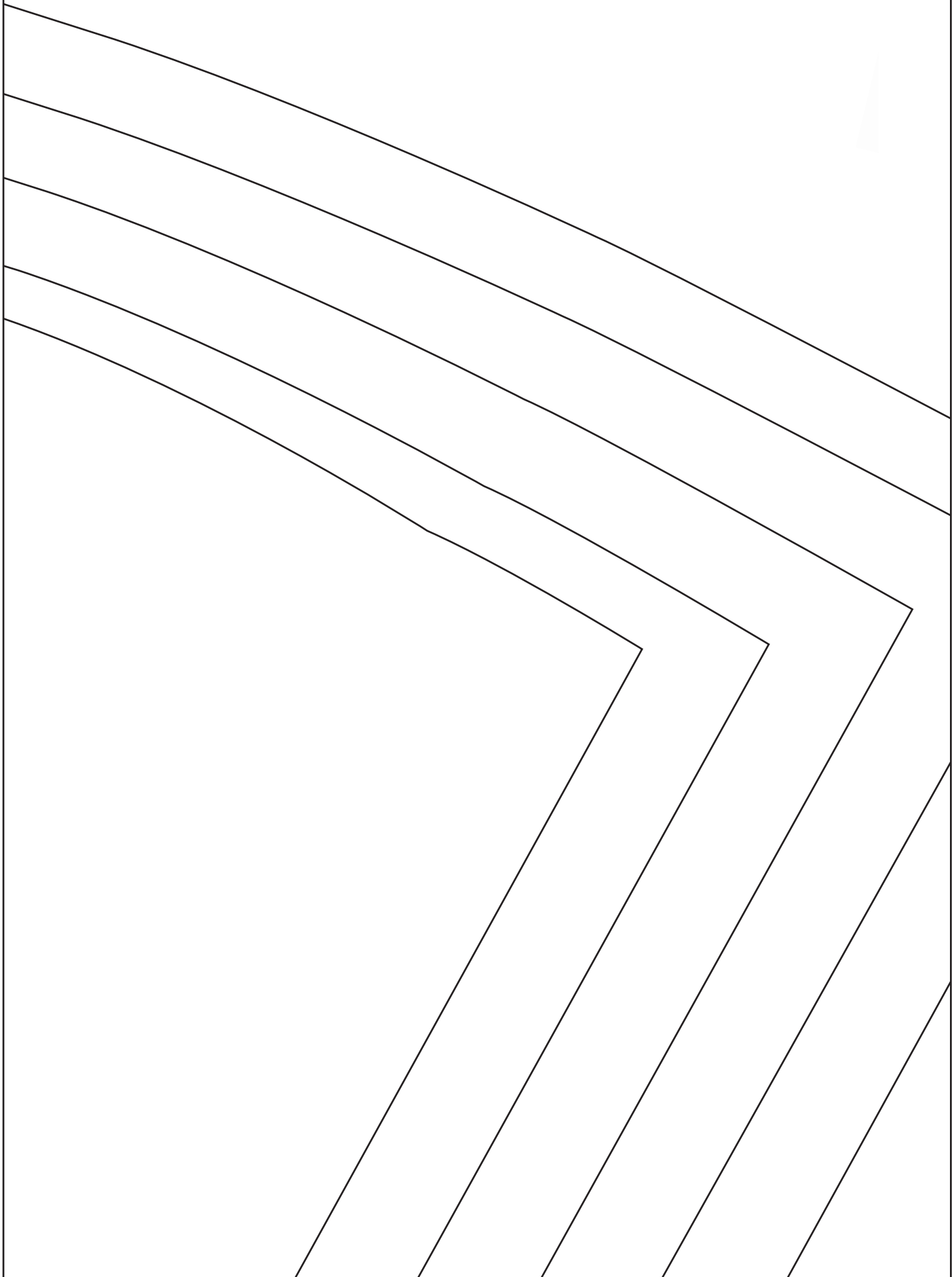
1



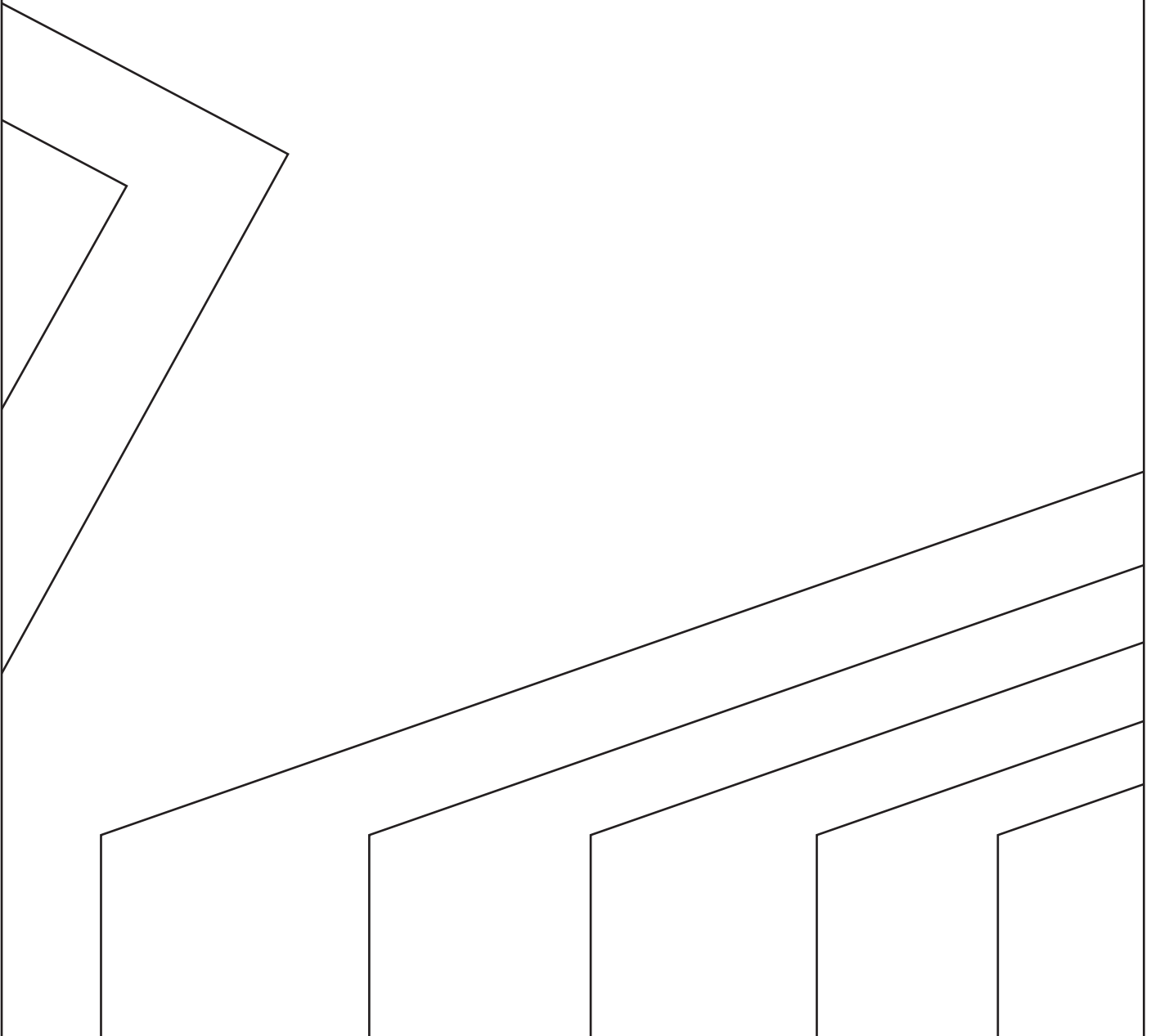
**Kwik Sew 3950
COWL TOP
BACK BODICE
Cut 1 in fabric**



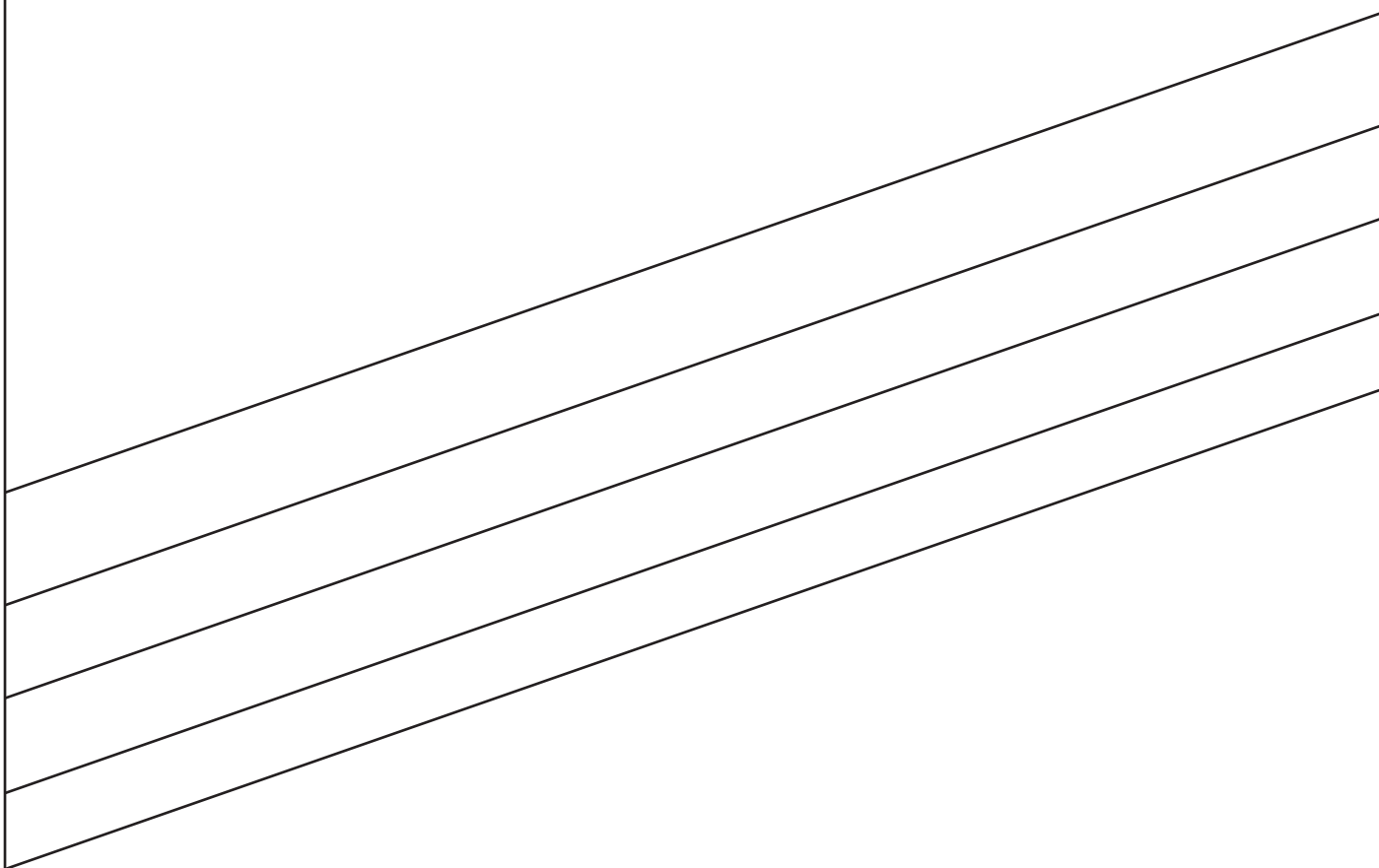
2



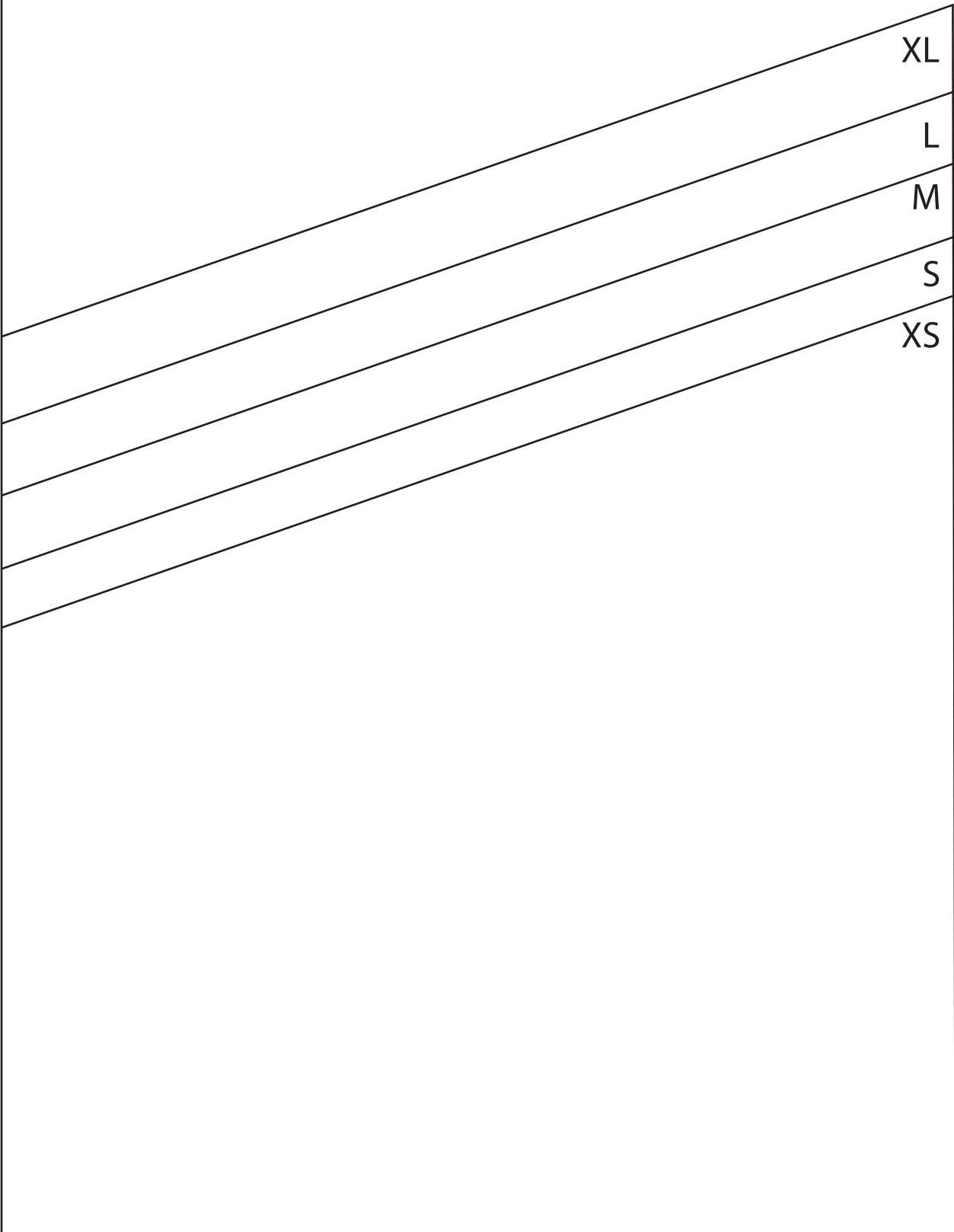
3



4



5



6

Shorten or lengthen line

Waist

Grain of fabric



7

XS

S

M

L

XL

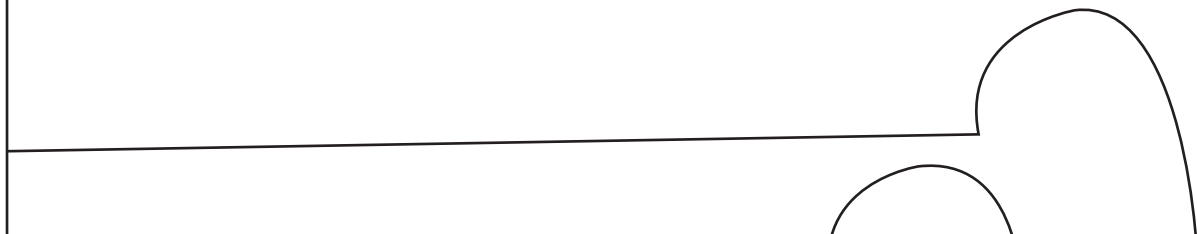




9



Kwik Sew 3950
FRONT BODICE
Cut 1 in fabric



10



11



Stretch of fabric

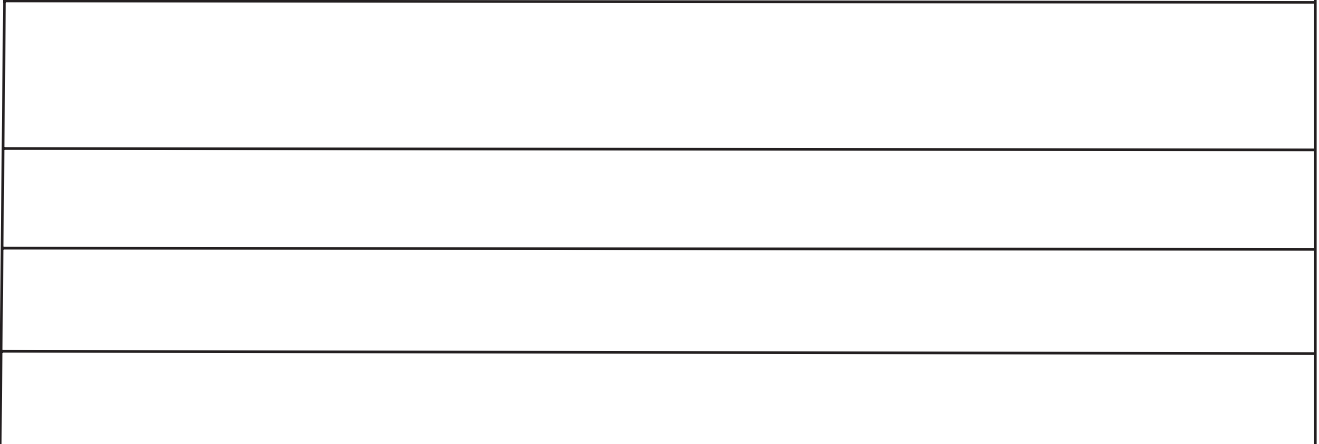


Shorten or lengthen line



6mm seam allowance included

2.5cm hem allowance



12



XS

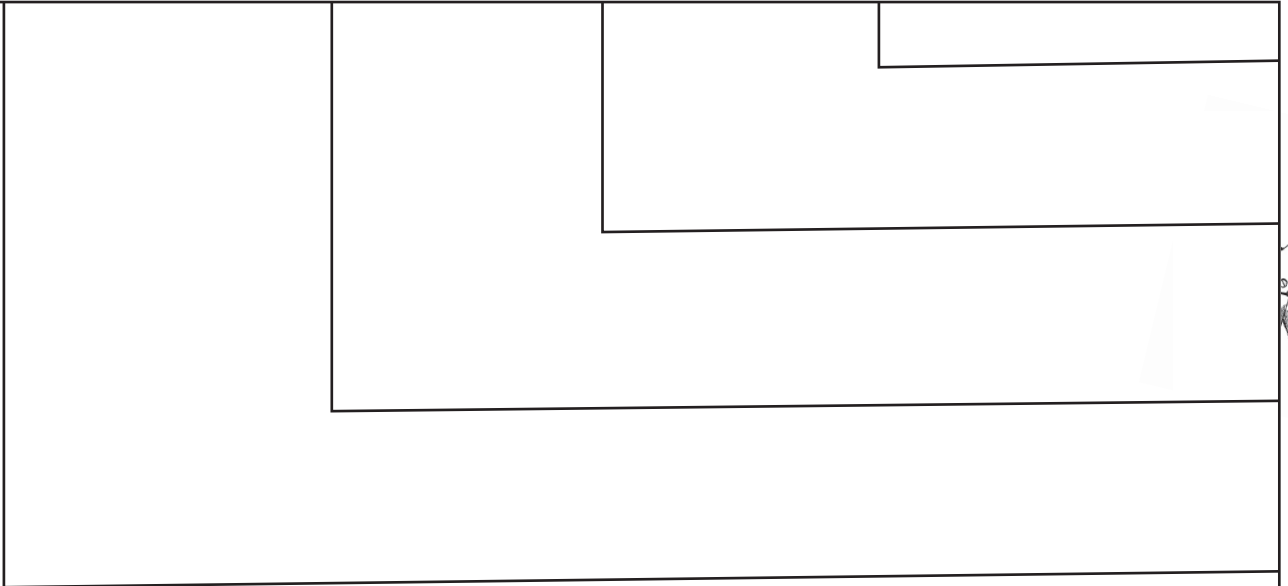
S

M

L

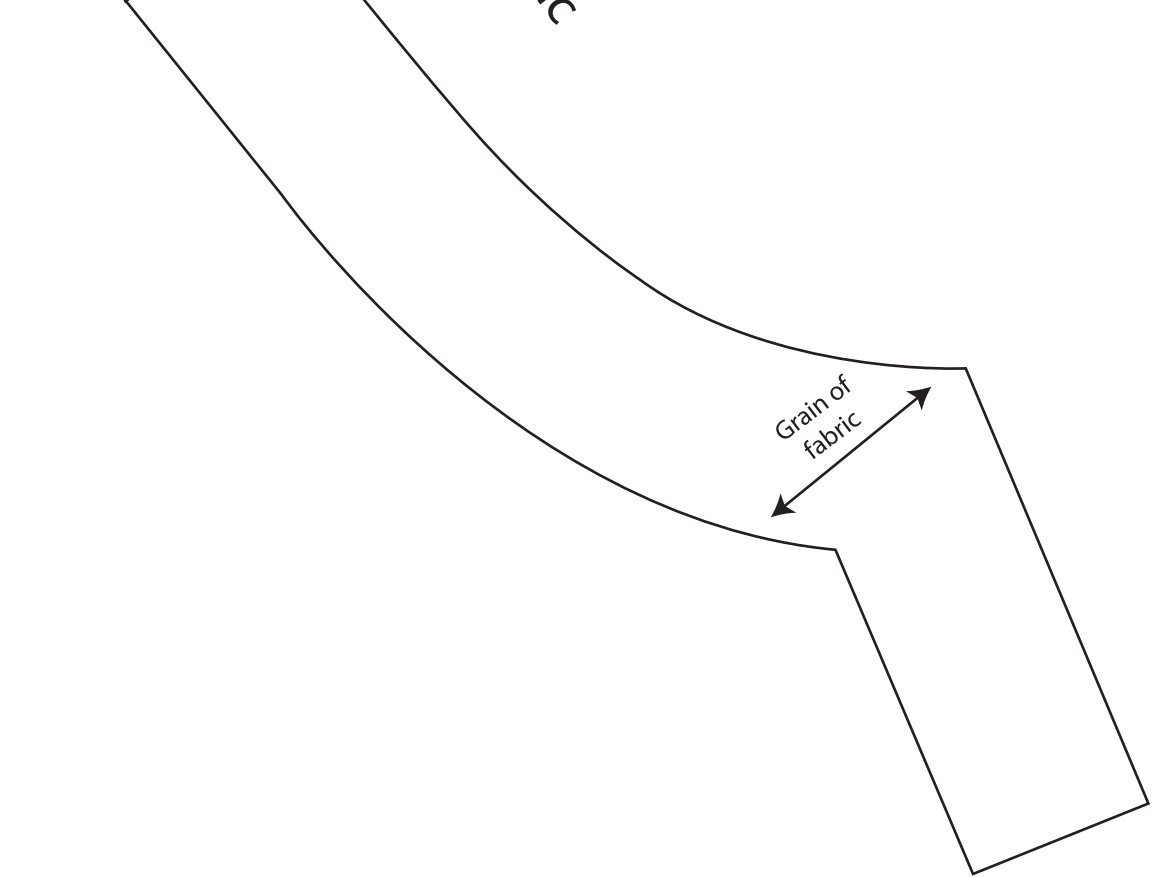
XL

13

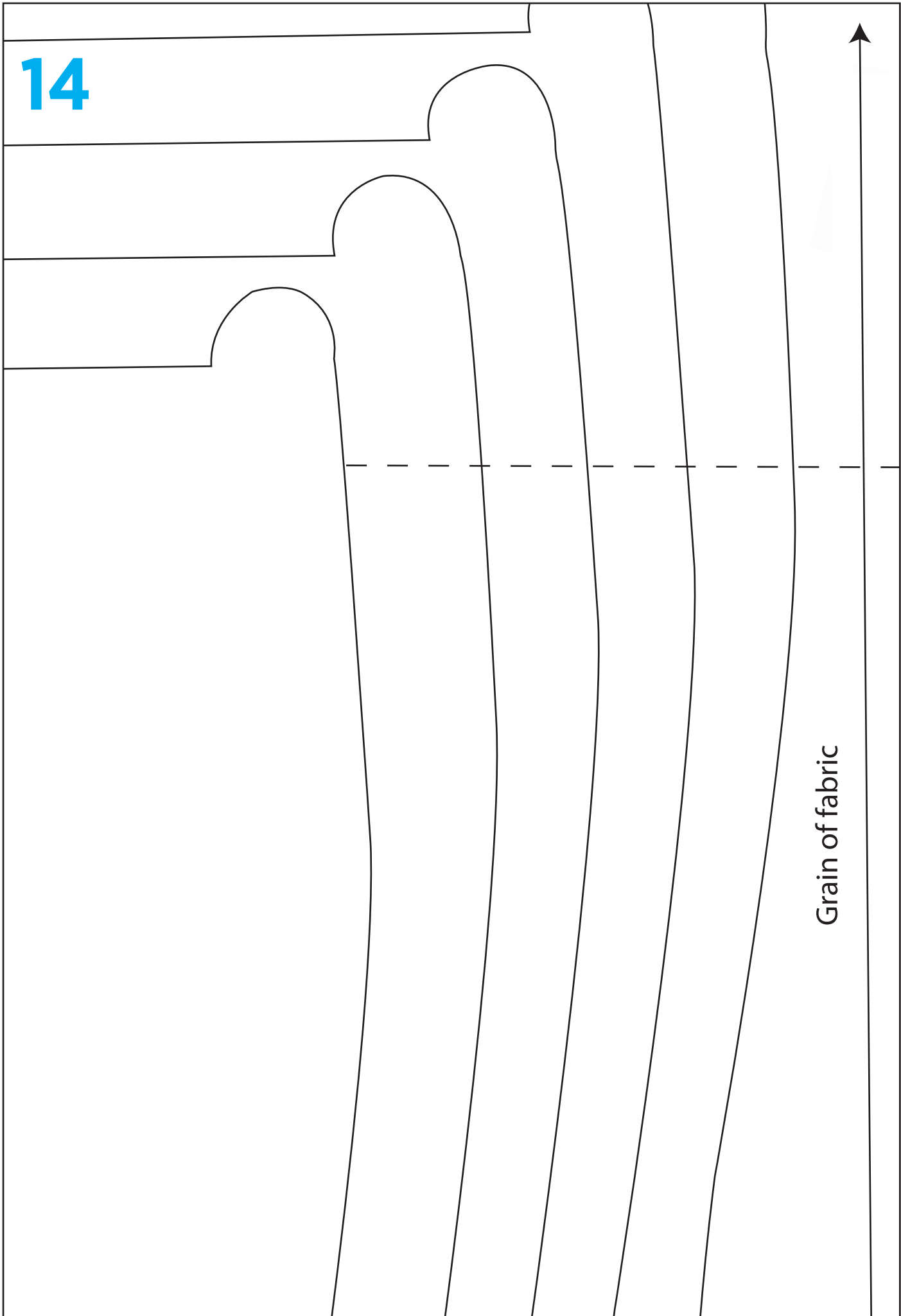


Kwik Sew 3950
NECK STABILISER
Cut 1 on fold in fabric
and interfacing

XL
L
M
S
XS



14



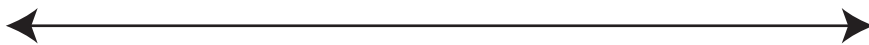
Grain of fabric



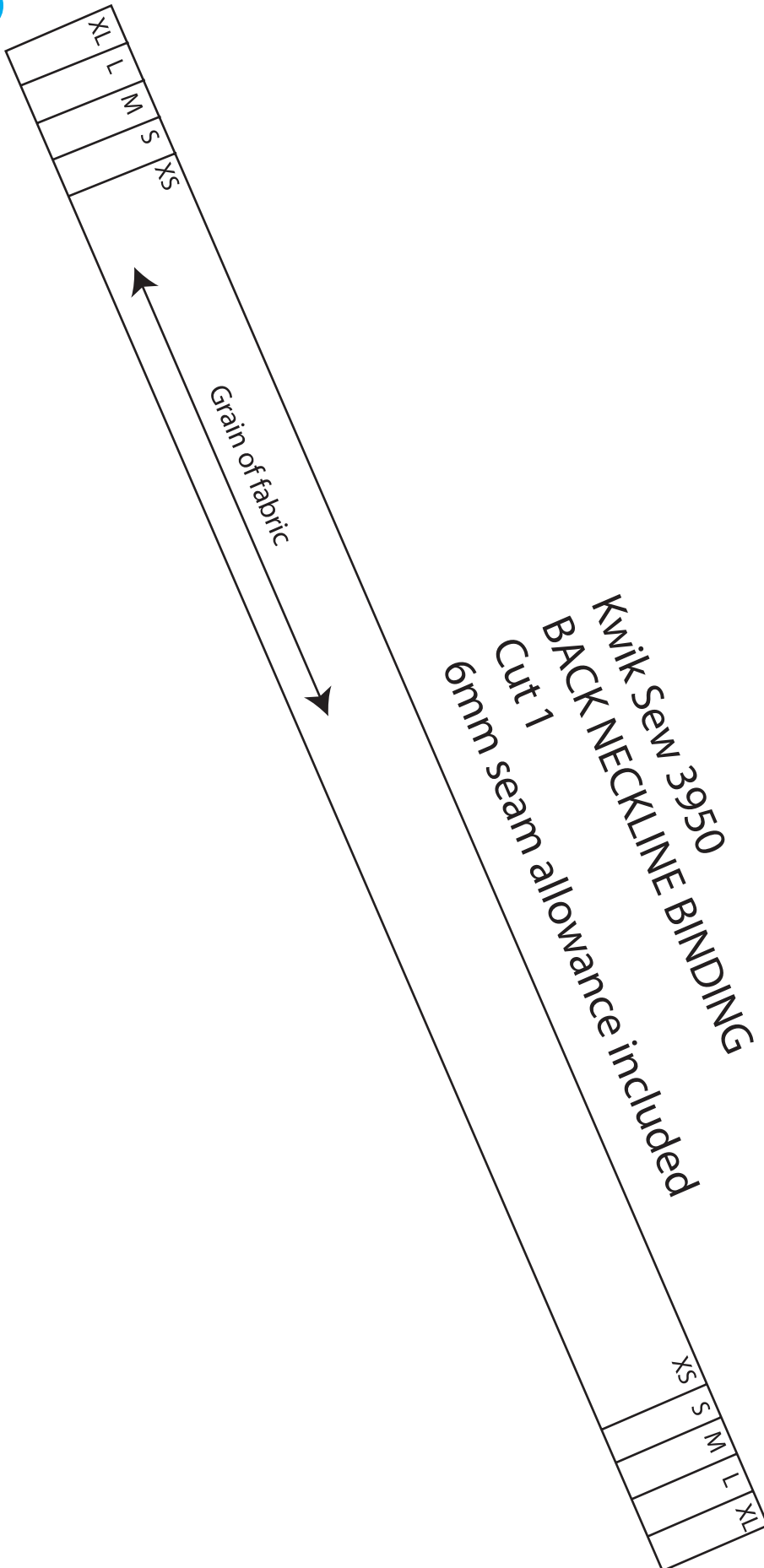
Shorten or lengthen line

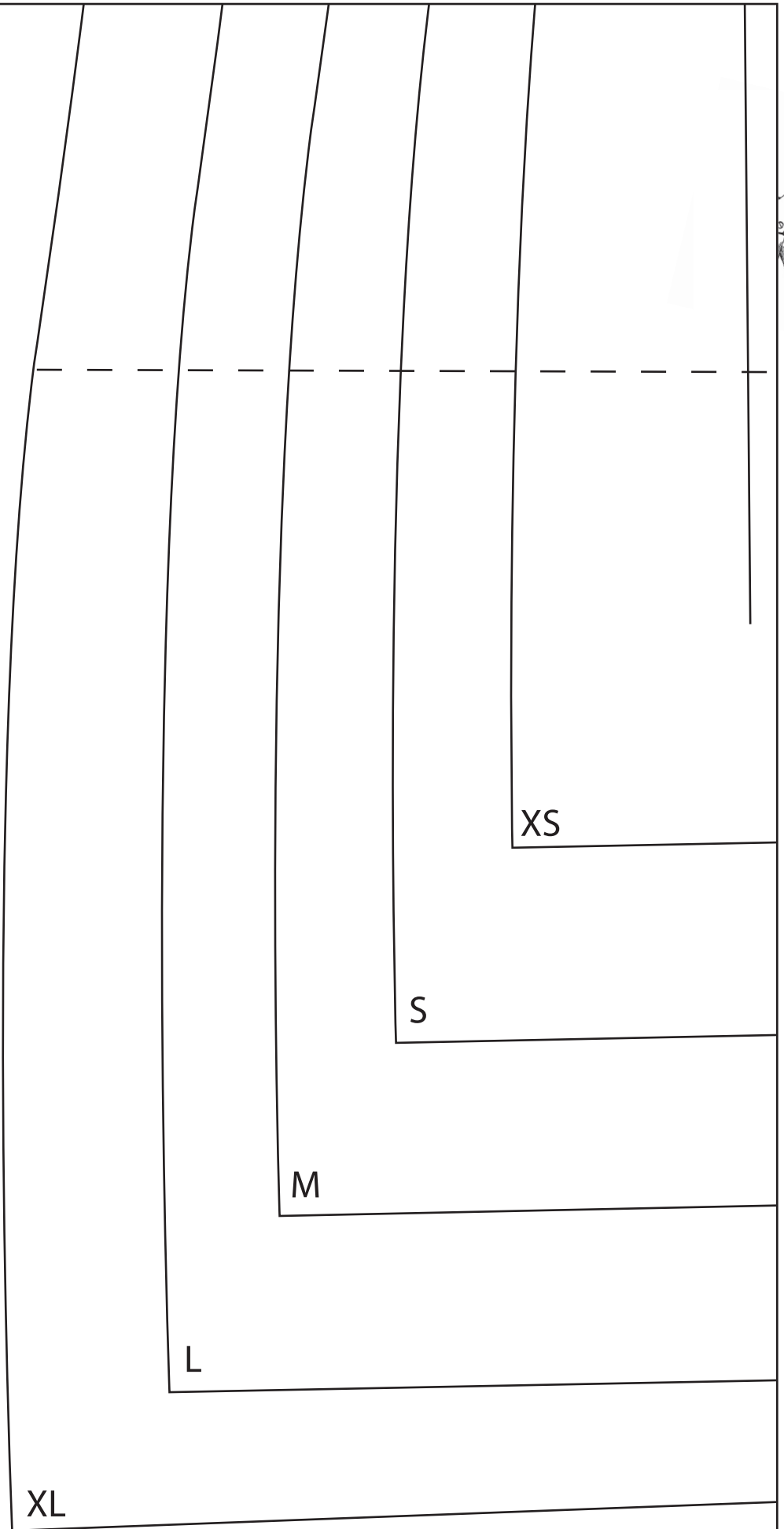


Stretch of fabric



16





Shorten or lengthen line

