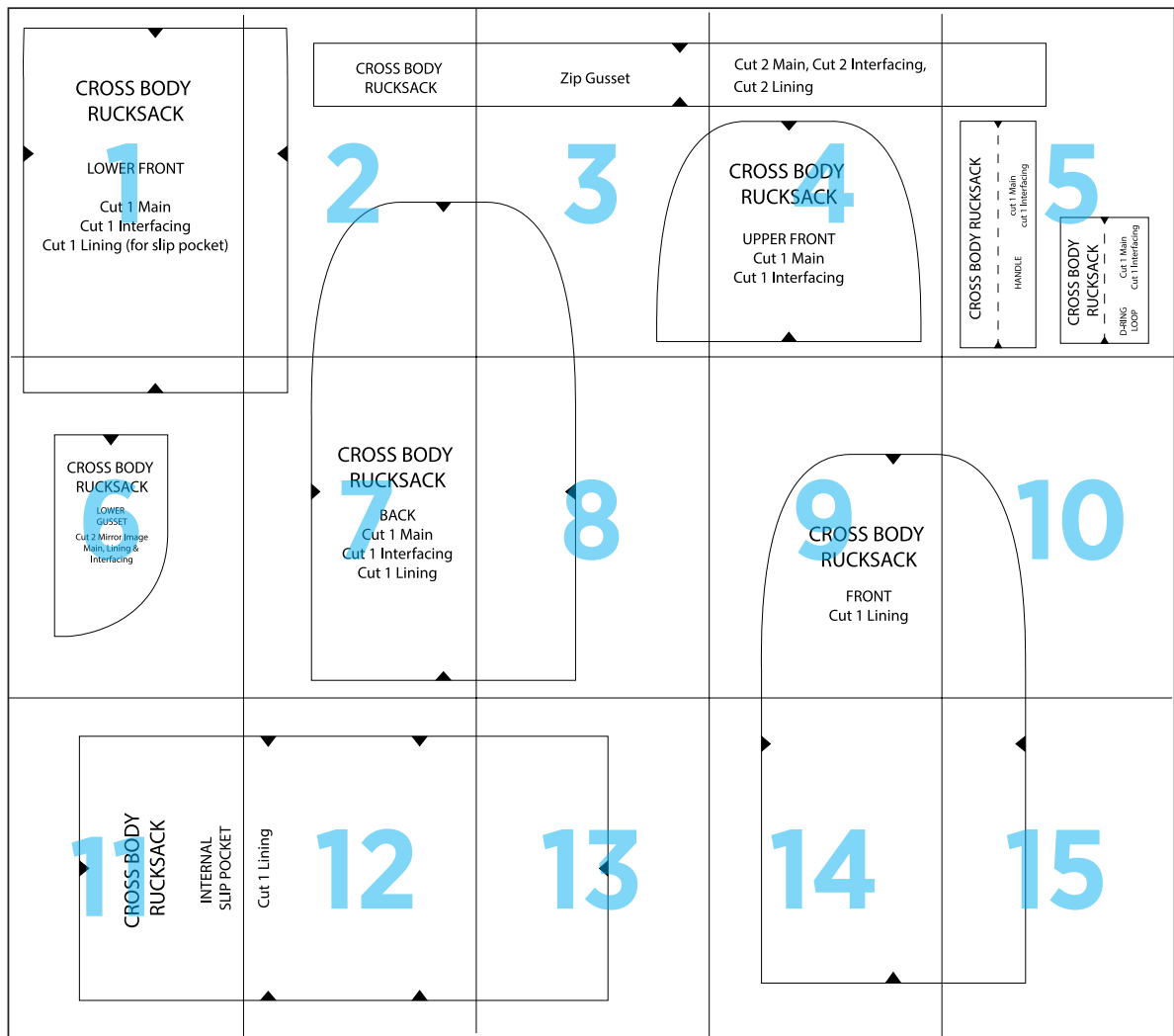


Rucksack



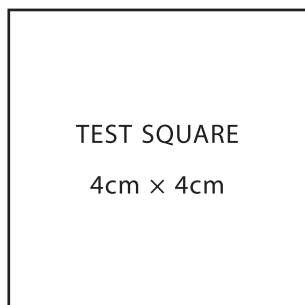
1



CROSS BODY RUCKSACK

LOWER FRONT

Cut 1 Main
Cut 1 Interfacing
Cut 1 Lining (for slip pocket)



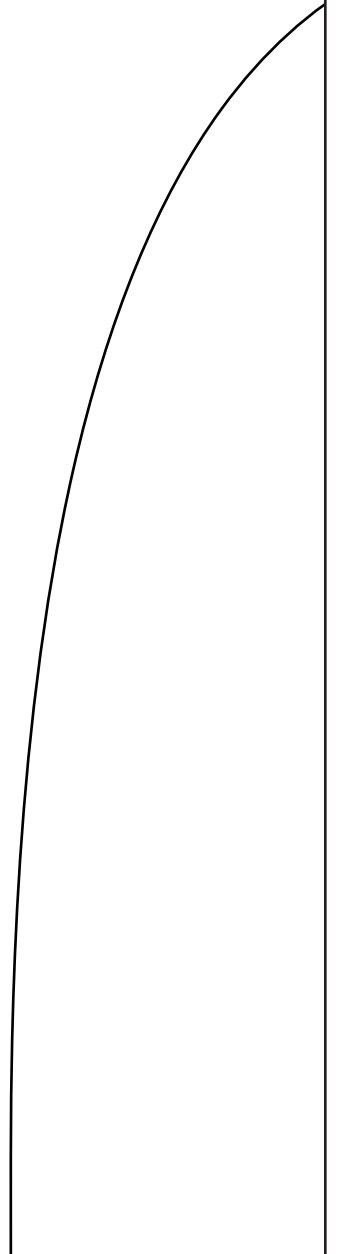
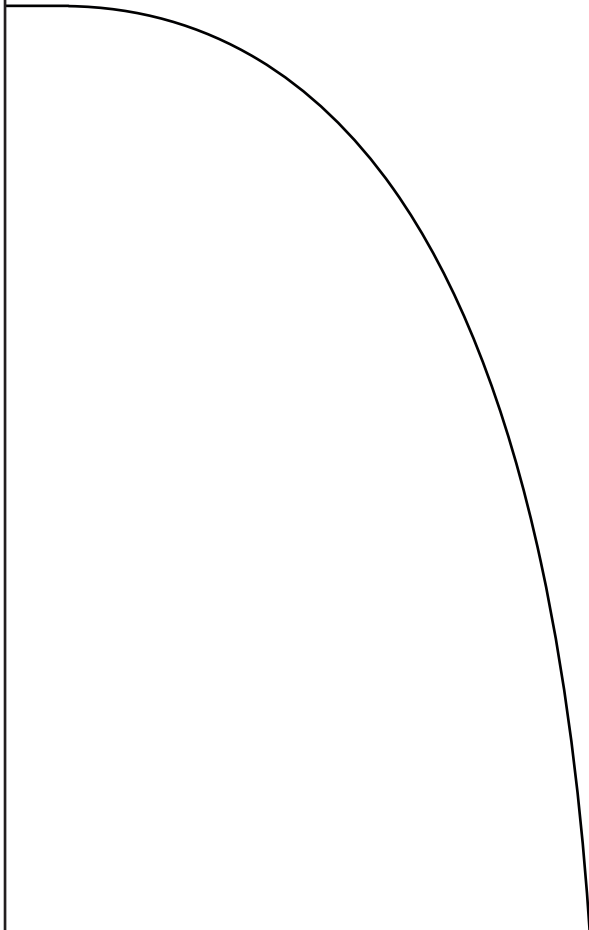
2

CROSS BODY RUCKSACK



3

Zip Gusset



4

Cut 2 Main, Cut 2 Interfacing,
Cut 2 Lining



A diagram showing the shape of the upper front piece of a cross-body rucksack. It is a large, rounded rectangle with a curved top edge. A small black triangle points downwards from the top center, and another small black triangle points upwards from the bottom center.

CROSS BODY RUCKSACK

UPPER FRONT
Cut 1 Main
Cut 1 Interfacing

CROSS BODY RUCKSACK

HANDLE

cut 1 Main
cut 1 Interfacing

CROSS BODY RUCKSACK

D-RING
LOOP Cut 1 Main
 Cut 1 Interfacing



6



CROSS BODY RUCKSACK

LOWER
GUSSET

Cut 2 Mirror Image
Main, Lining &
Interfacing

7



CROSS BODY RUCKSACK

BACK

Cut 1 Main

Cut 1 Interfacing

Cut 1 Lining

8



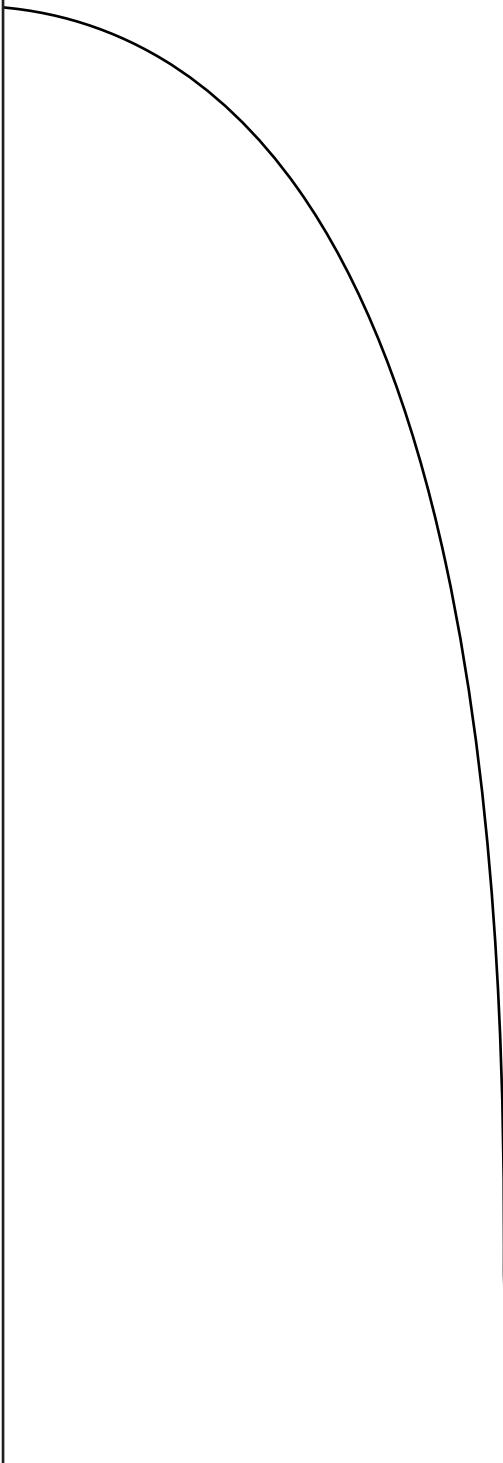
9




CROSS BODY RUCKSACK

FRONT
Cut 1 Lining

10





**CROSS BODY
RUCKSACK**

**INTERNAL
SLIP POCKET**



12

Cut 1 Lining





14



15

