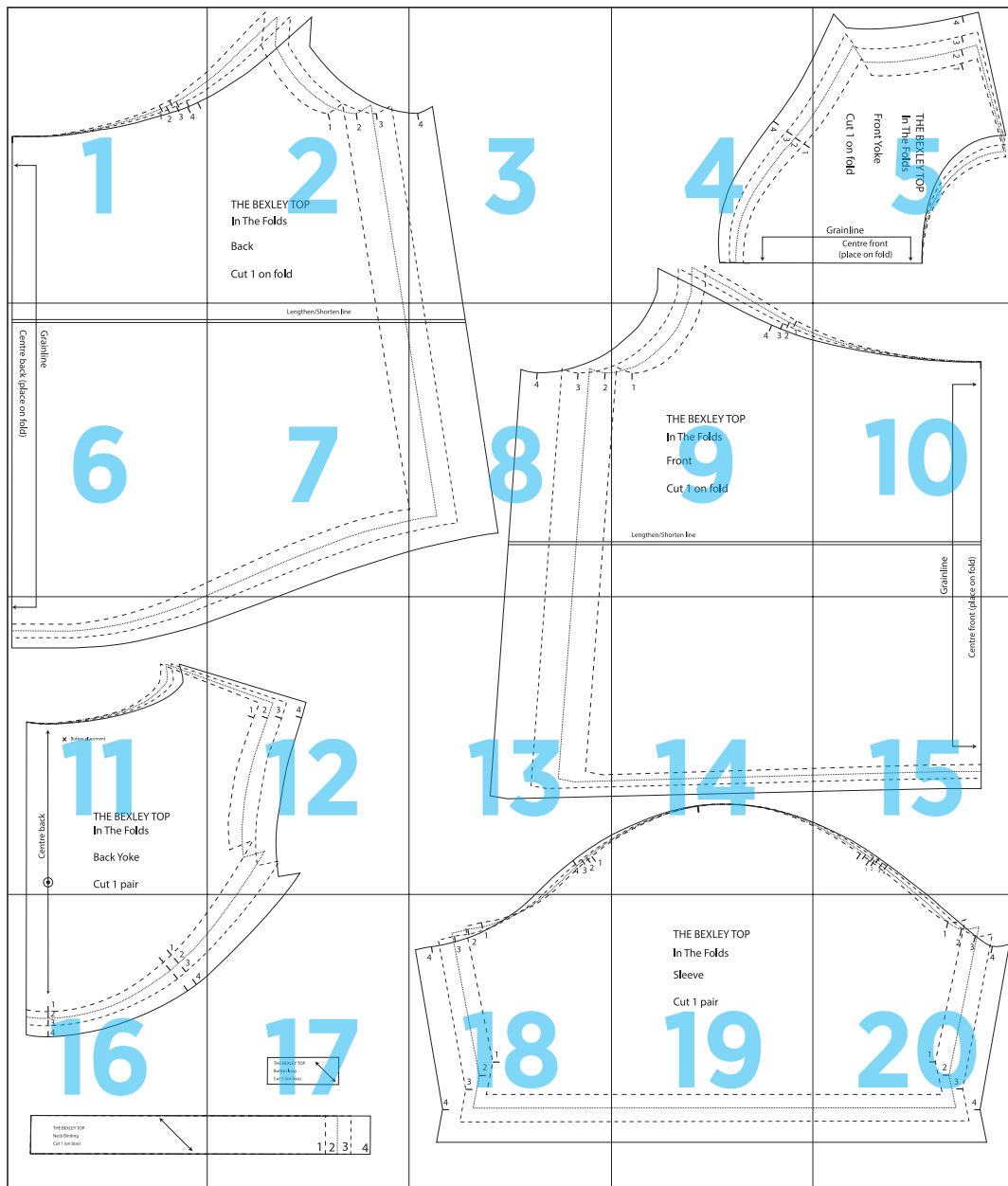
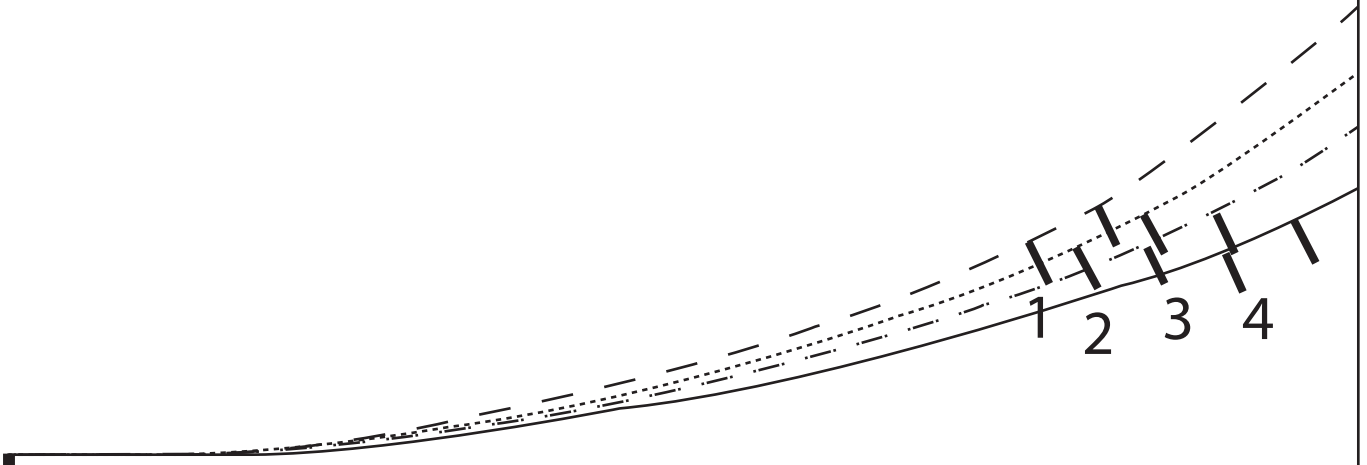


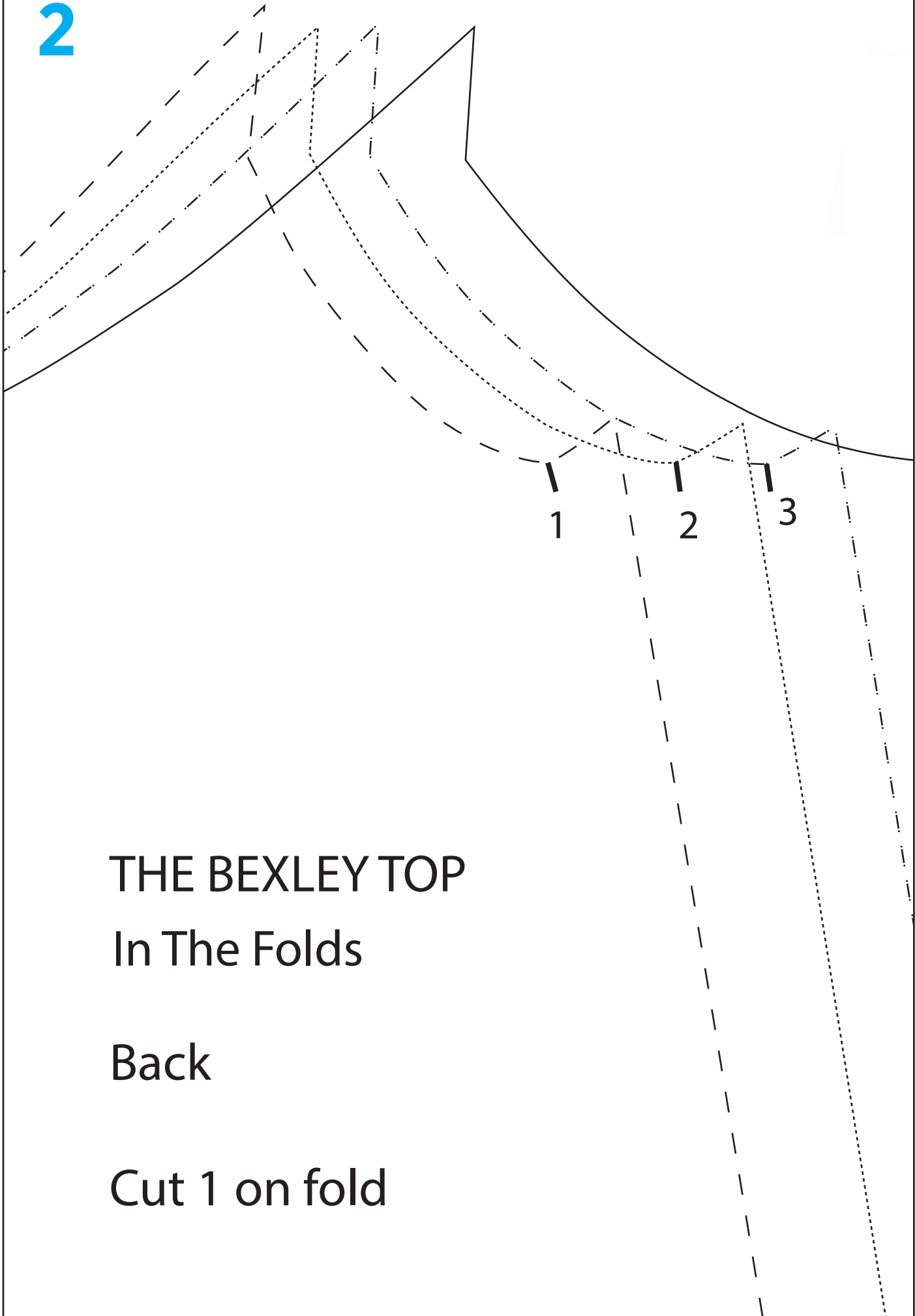
The Bexley Top



1



2



THE BEXLEY TOP

In The Folds

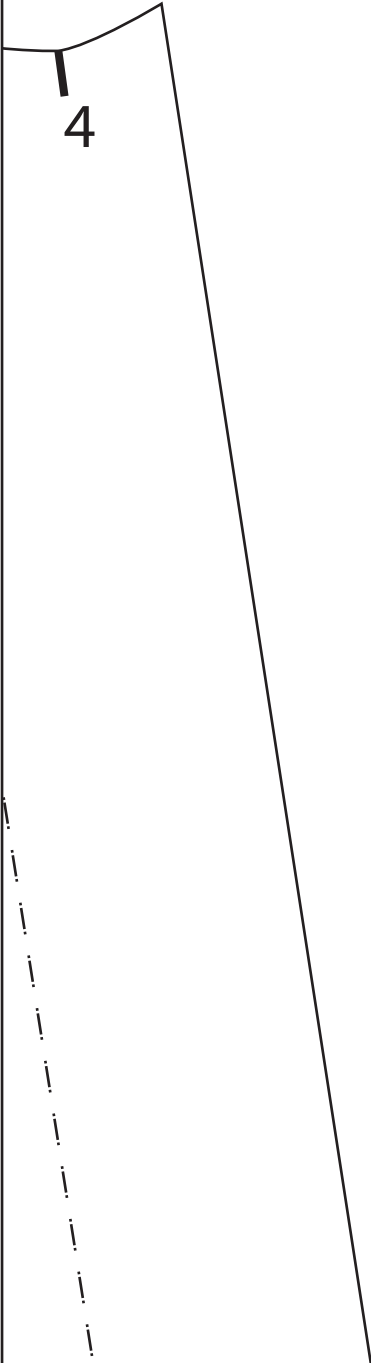
Back

Cut 1 on fold

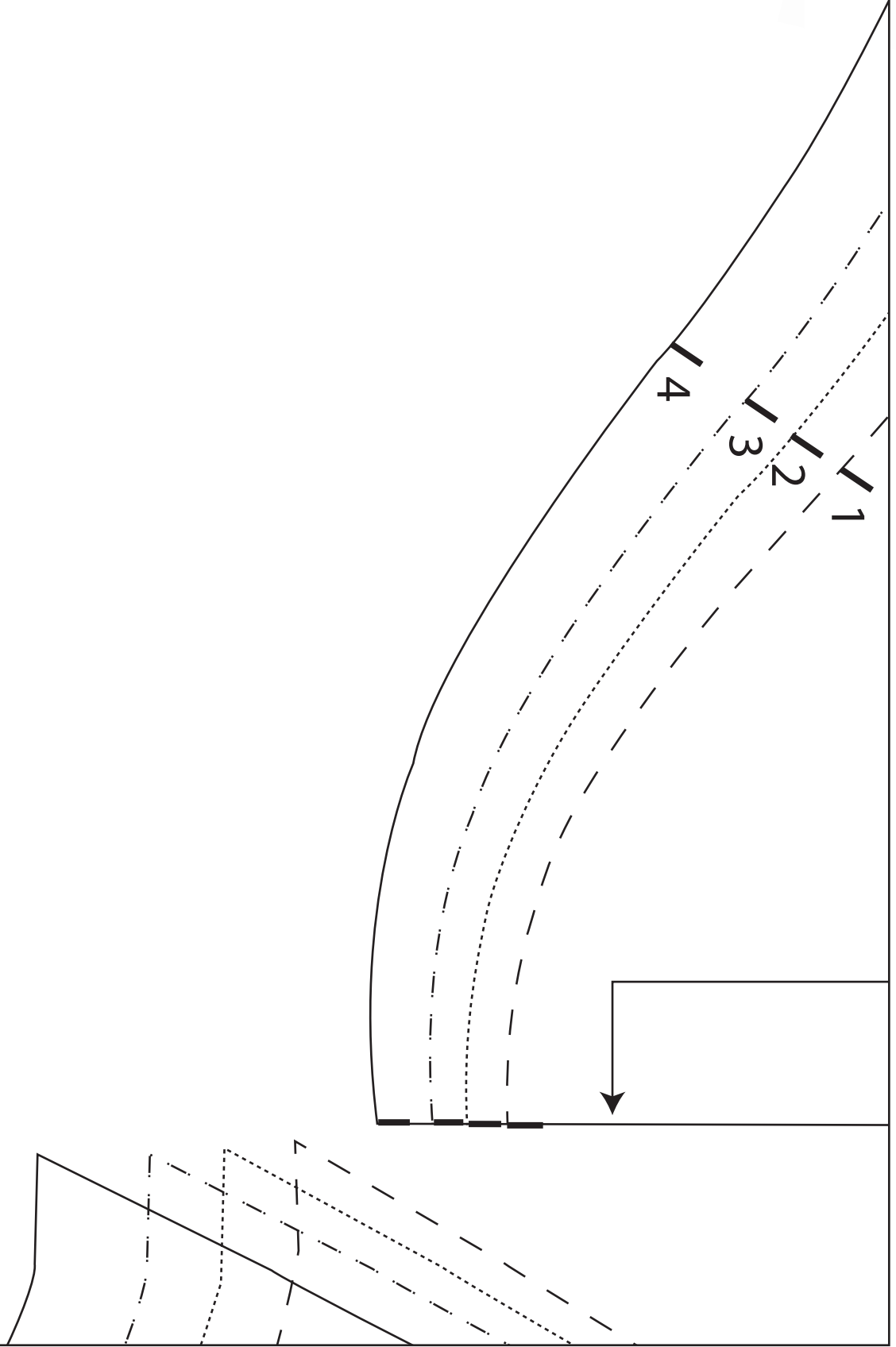
3



4



4





5

4
3
2
1

THE BEXLEY TOP
In The Folds

Front Yoke

Cut 1 on fold

Grainline

Centre front
(place on fold)



Grainline

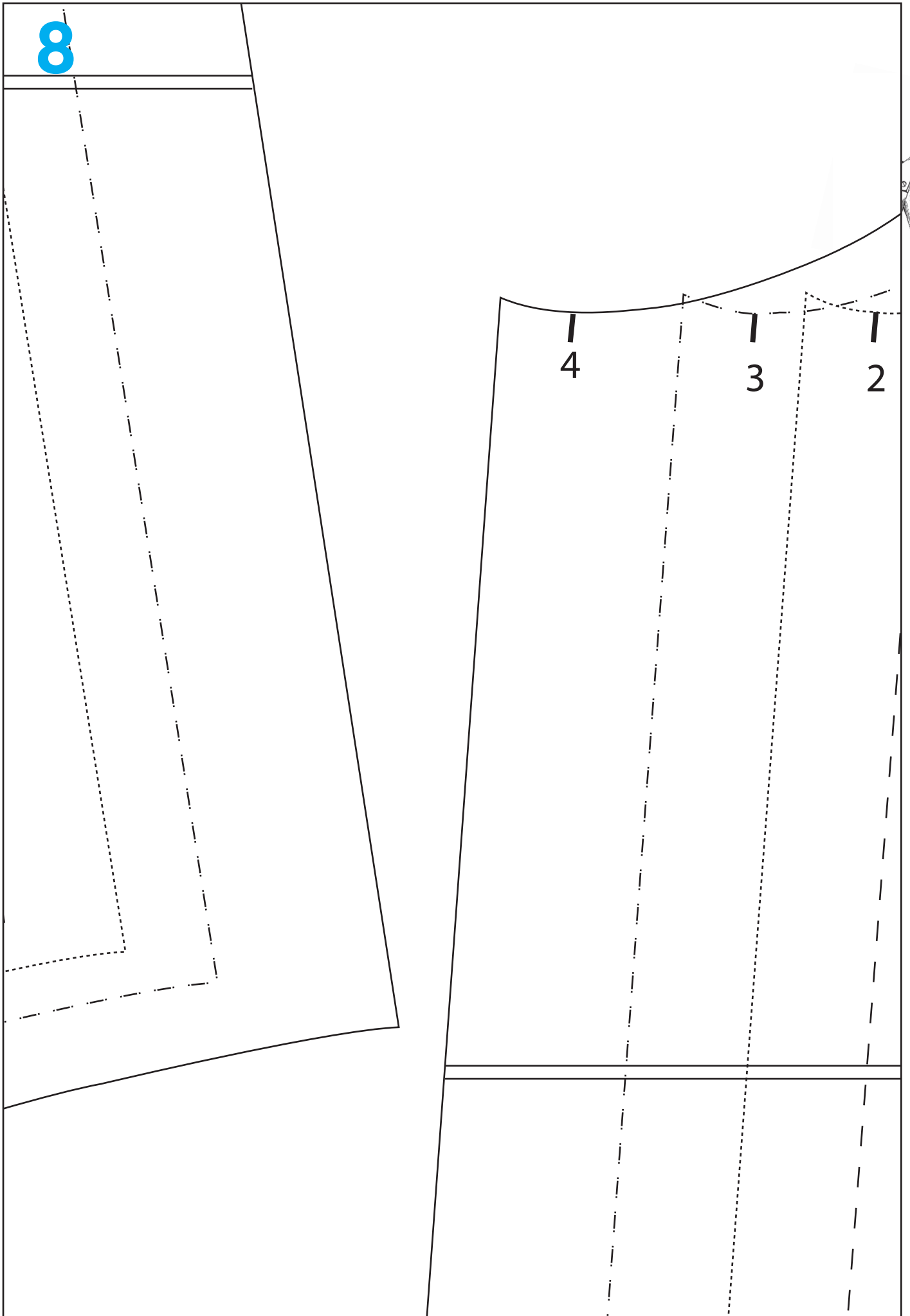
Centre back (place on fold)

9

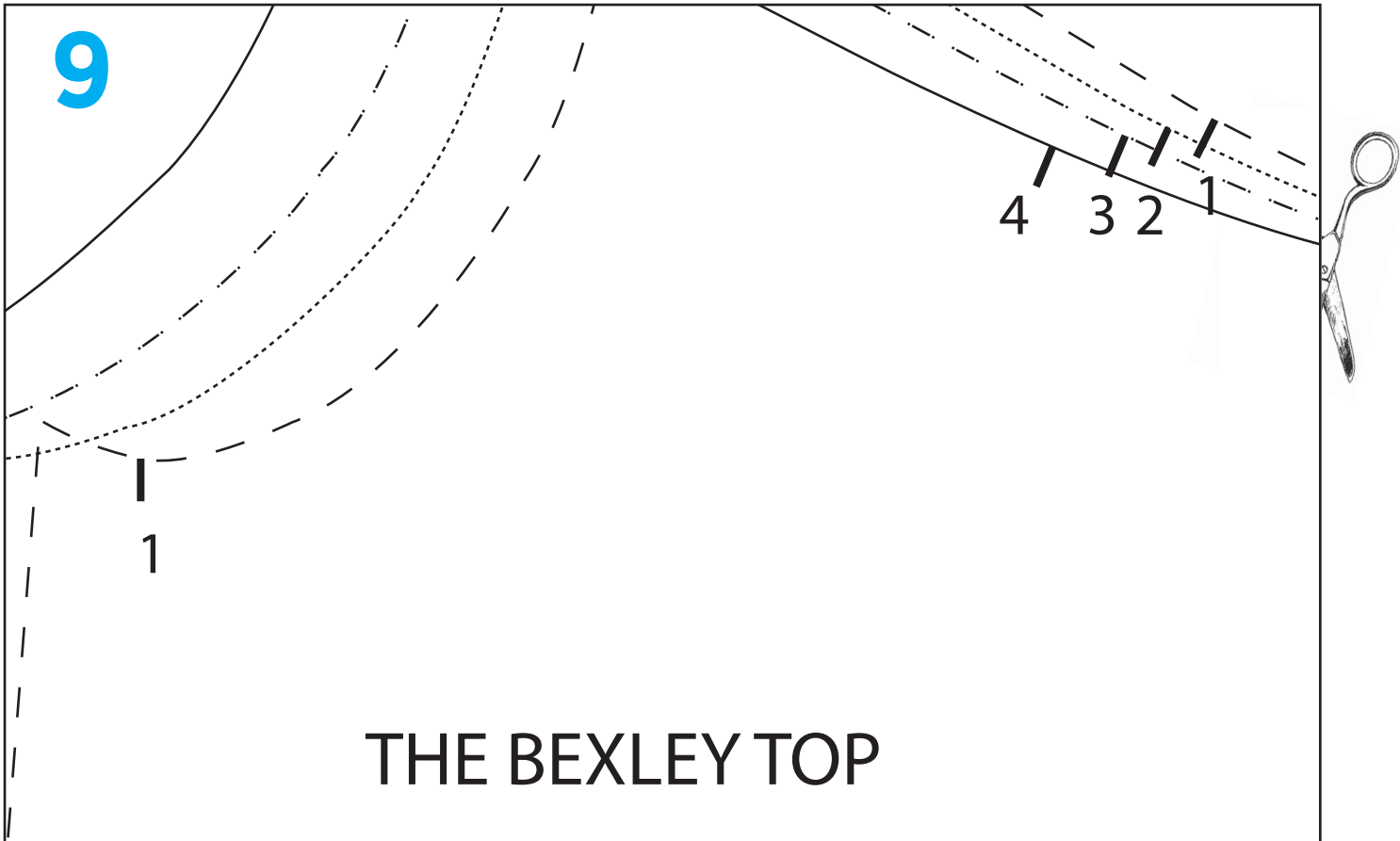


A large rectangular area containing several parallel lines. At the bottom, there is a solid line. Above it is a dashed line, then a dotted line, and at the top is another dashed line. A vertical dashed line runs from the top right corner down to the top dashed line. A dotted line runs from the top right corner down to the dotted line. A pair of scissors is positioned at the top right corner, with its blades pointing towards the vertical dashed line.

8



9



THE BEXLEY TOP

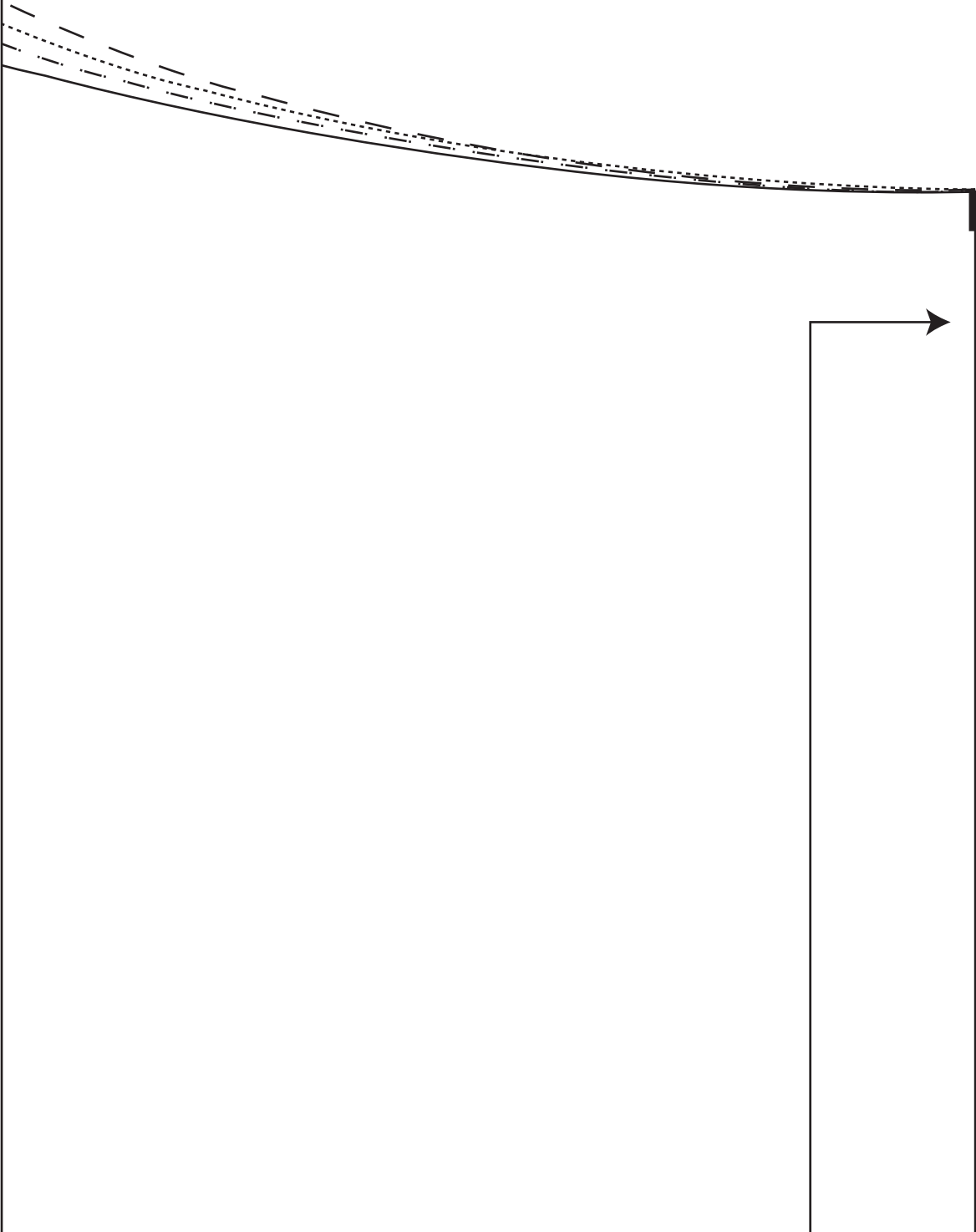
In The Folds

Front

Cut 1 on fold

Lengthen/Shorten line

10



Grainline

Place on fold)

11



× Button placement

Centre back

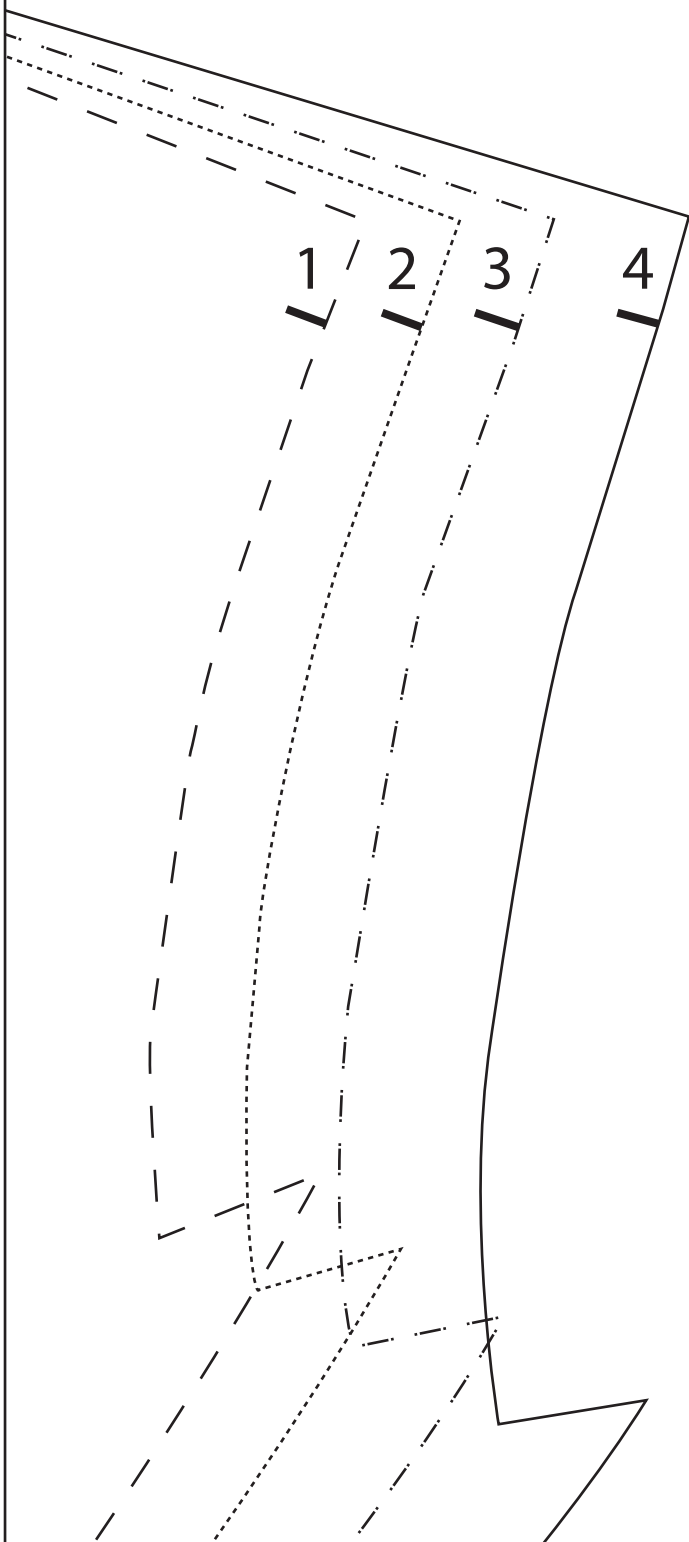


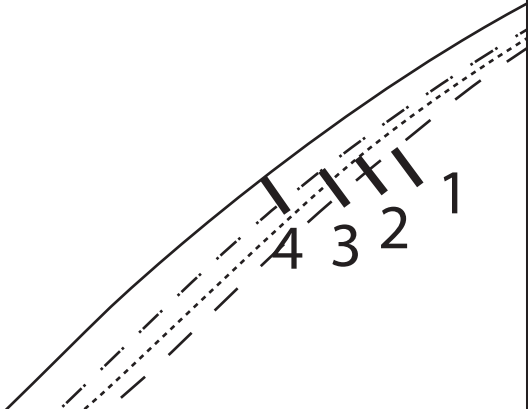
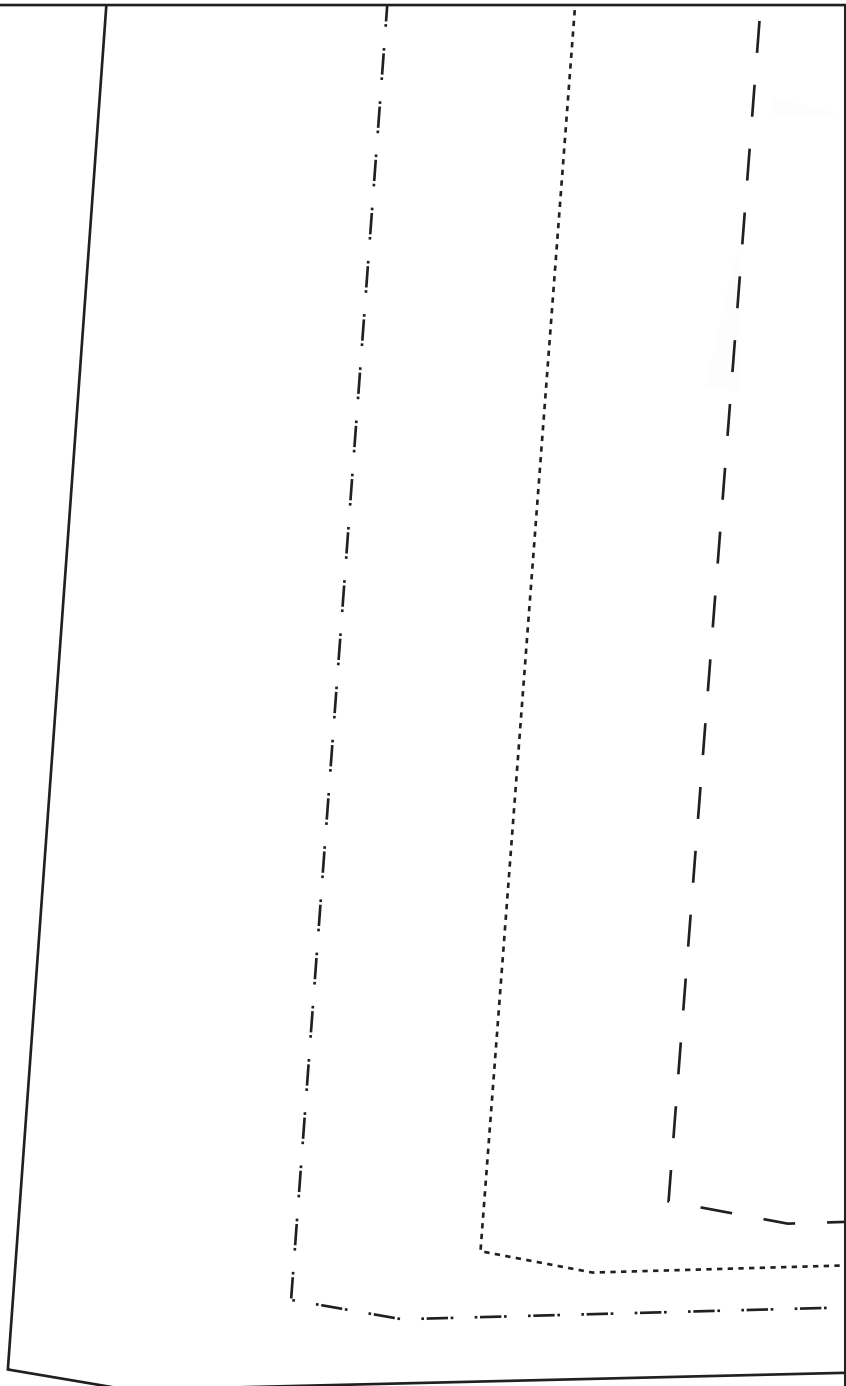
THE BEXLEY TOP In The Folds

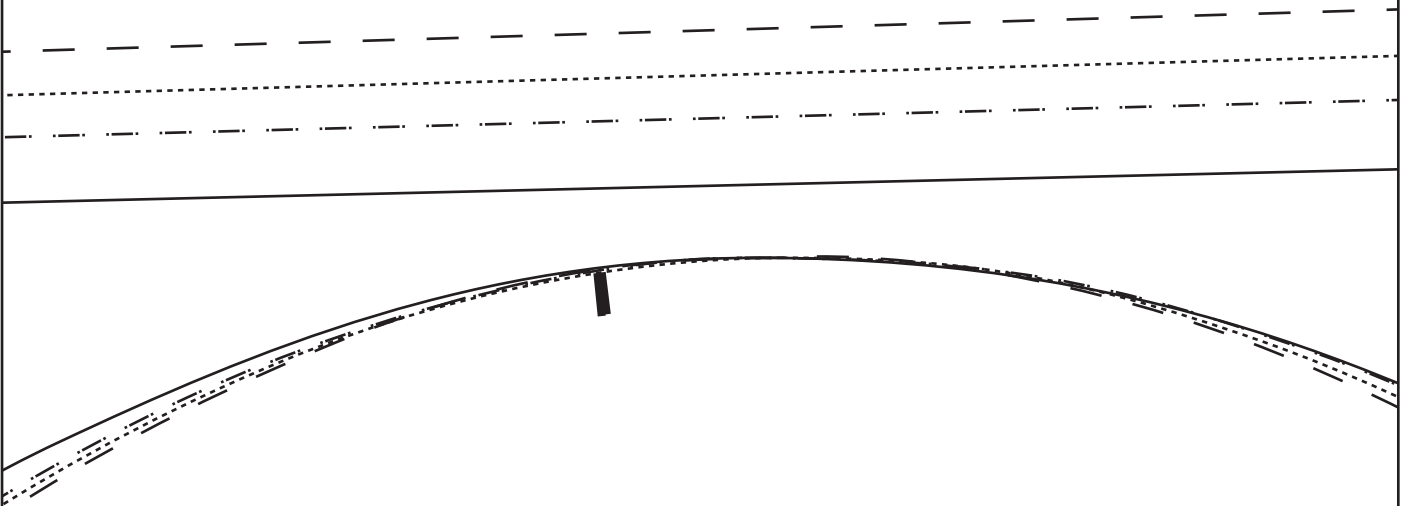
Back Yoke

Cut 1 pair

12

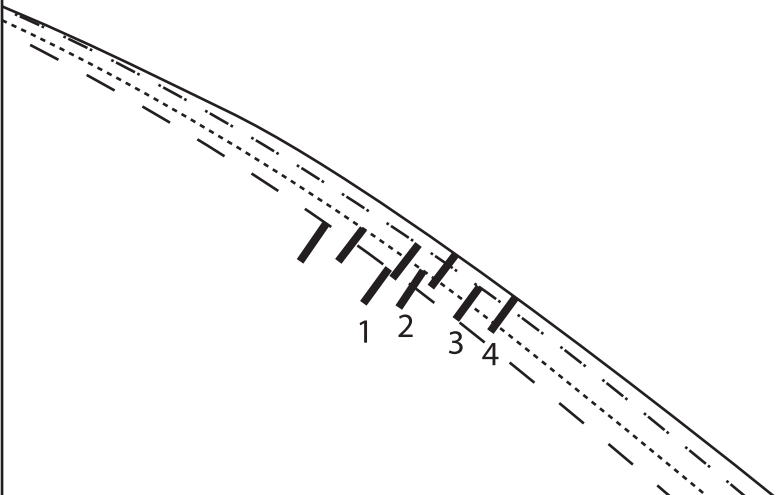
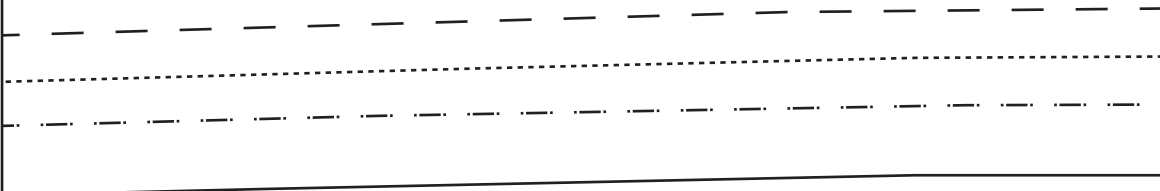




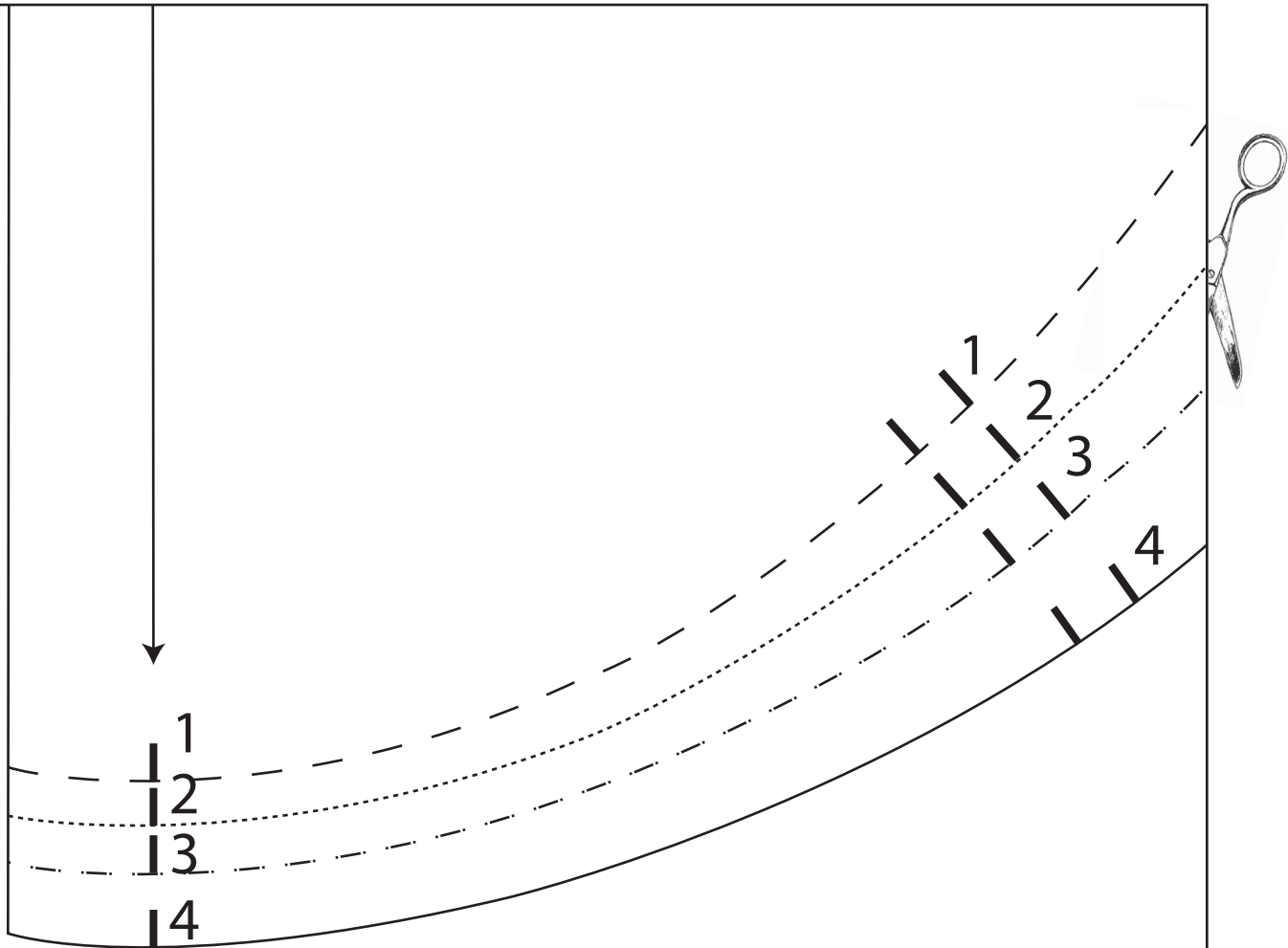


15

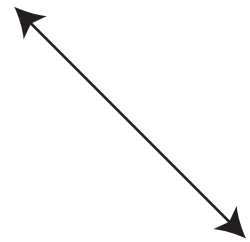
Centre front (pl



16



THE BEXLEY TOP
Neck Binding
Cut 1 (on bias)



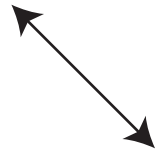
17



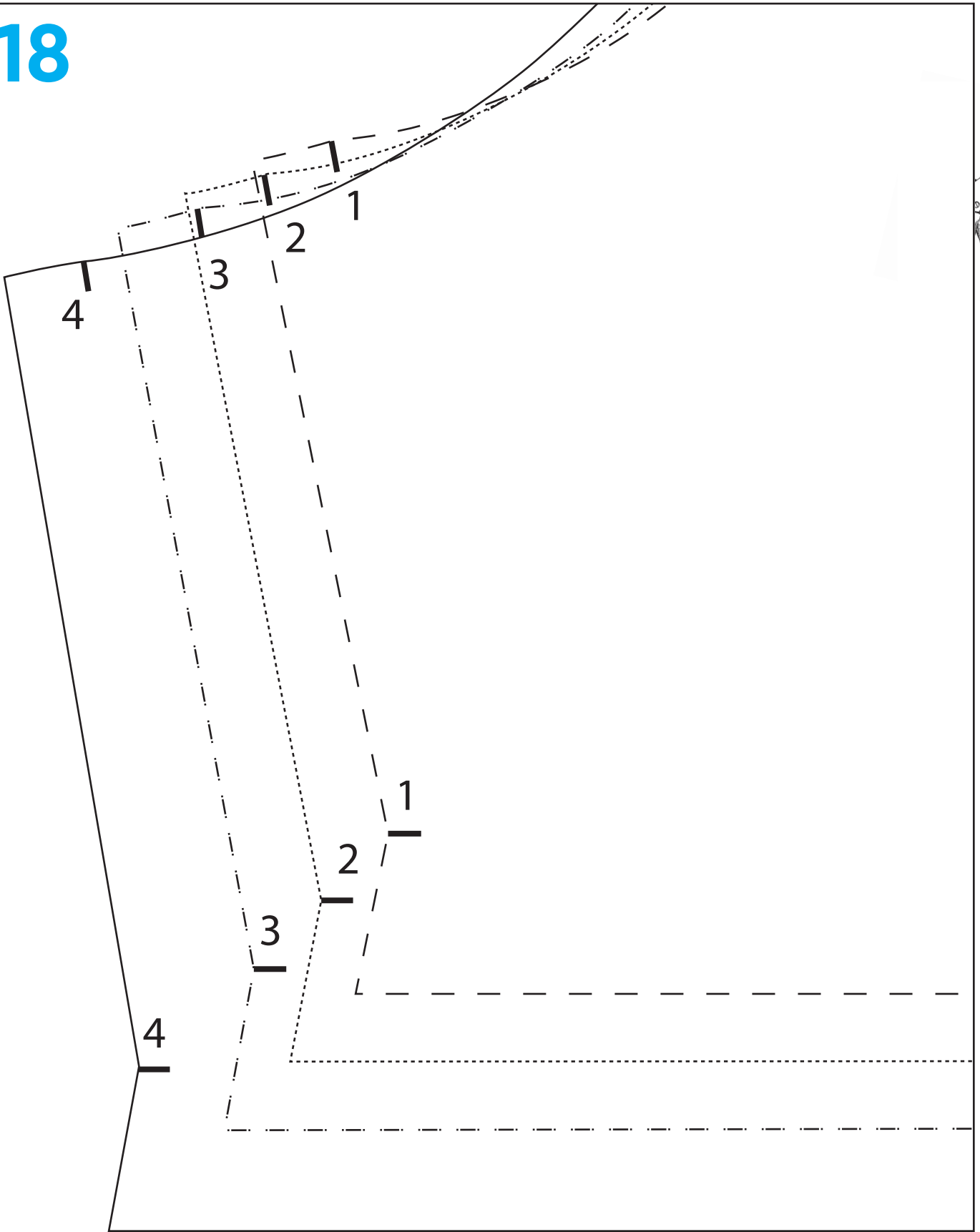
THE BEXLEY TOP

Button loop

Cut 1 (on bias)



1 2 3 4



THE BEXLEY TOP

In The Folds

Sleeve

Cut 1 pair

