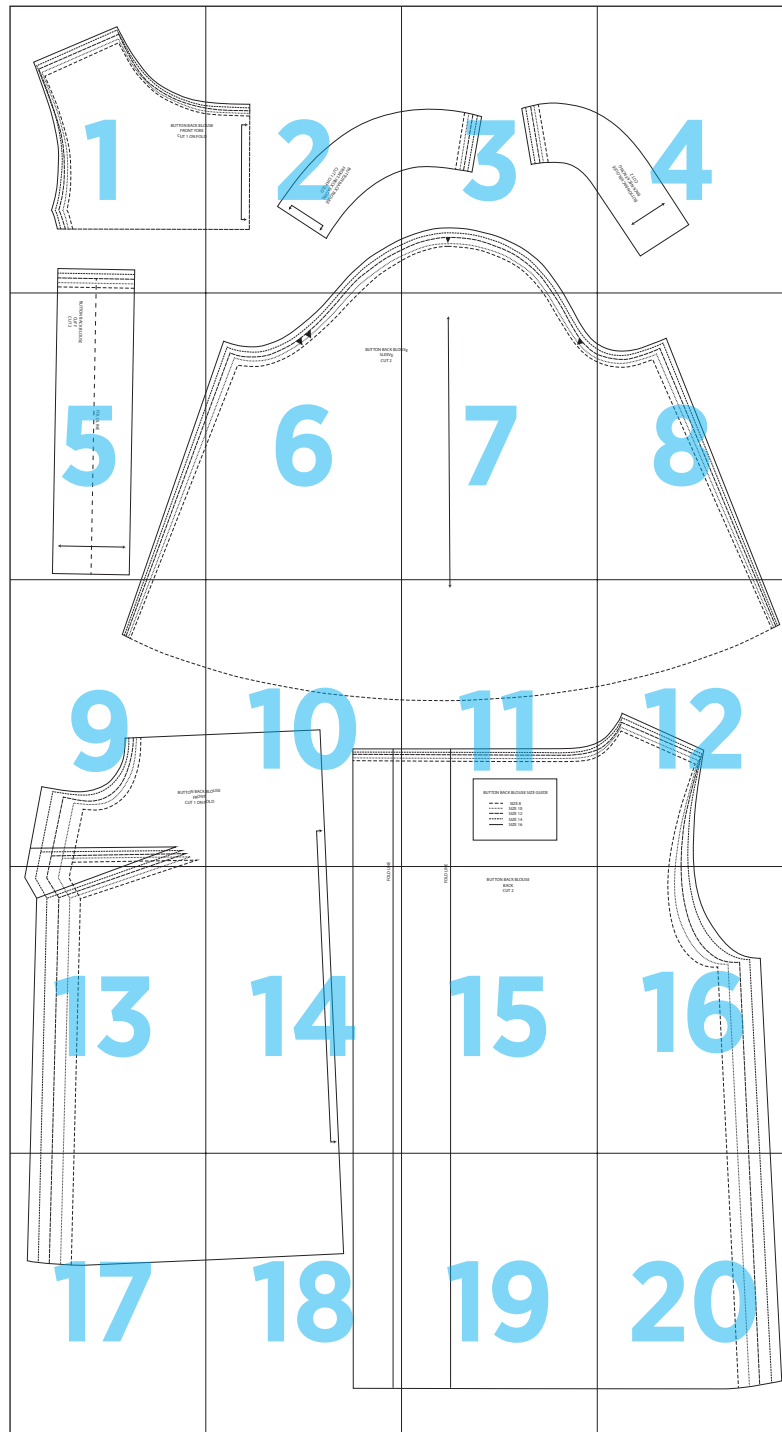
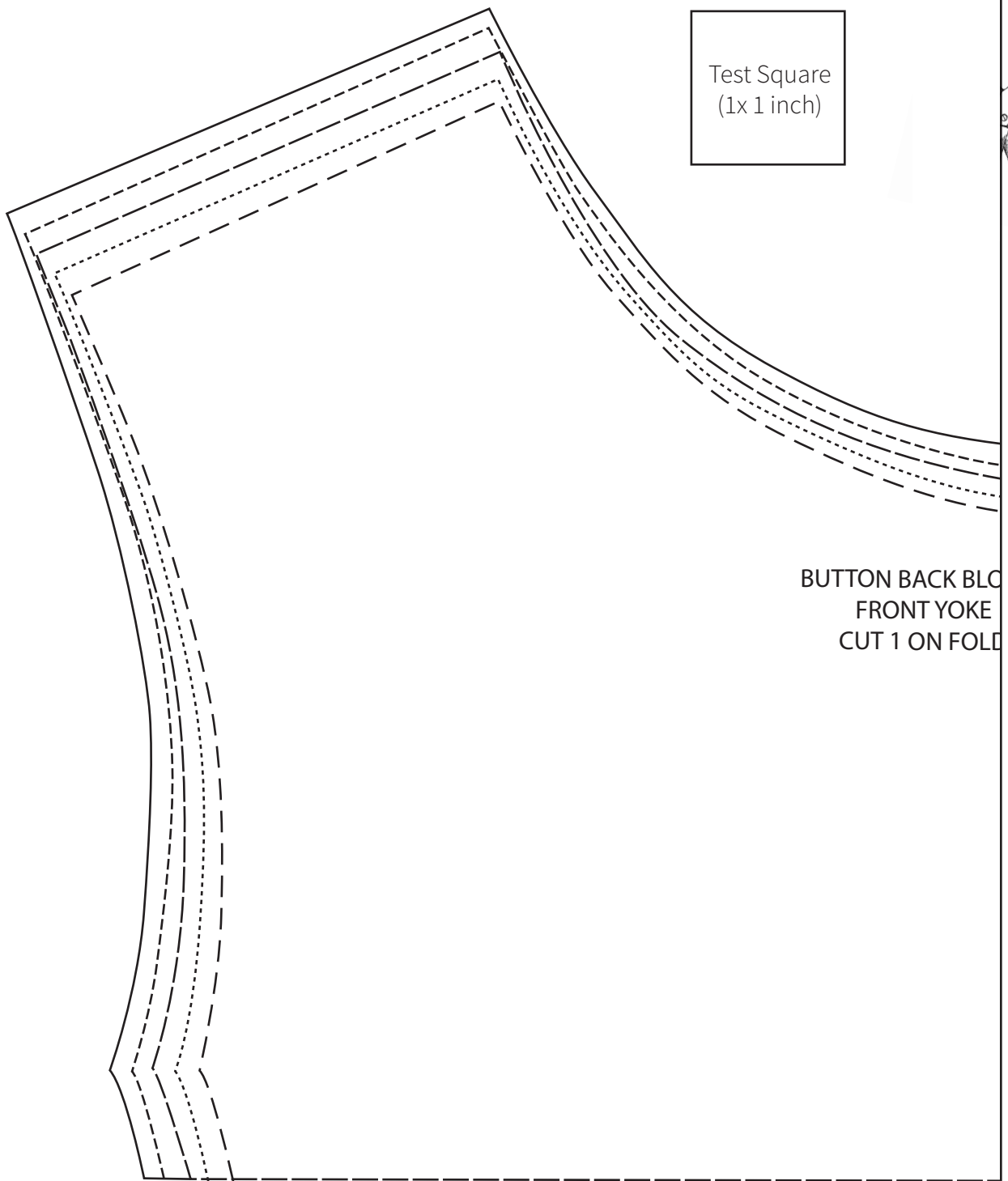


Button Back Blouse

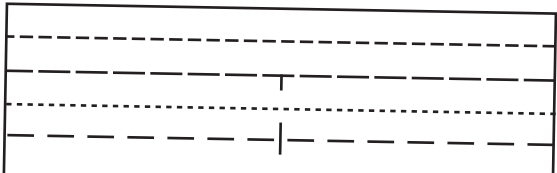


1

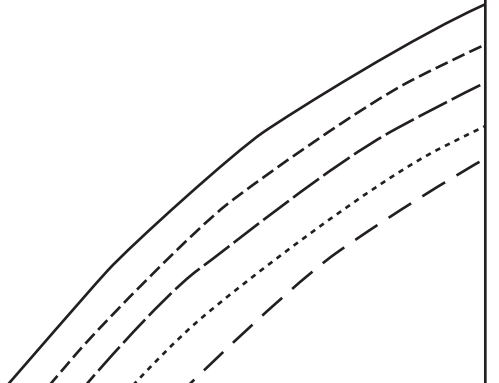
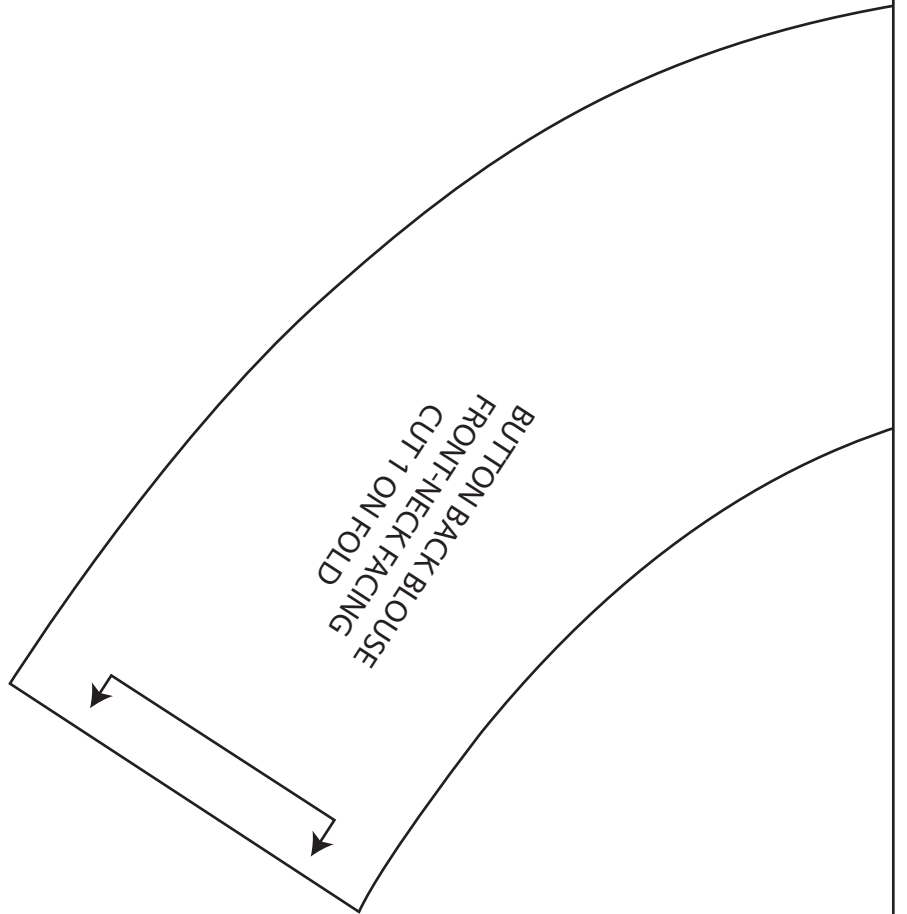
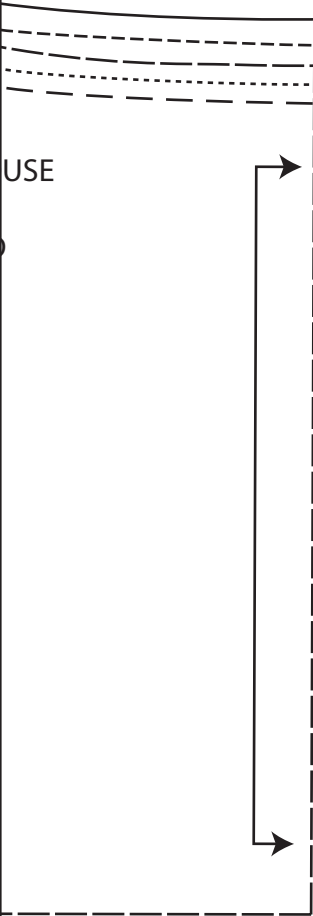


Test Square
(1x 1 inch)

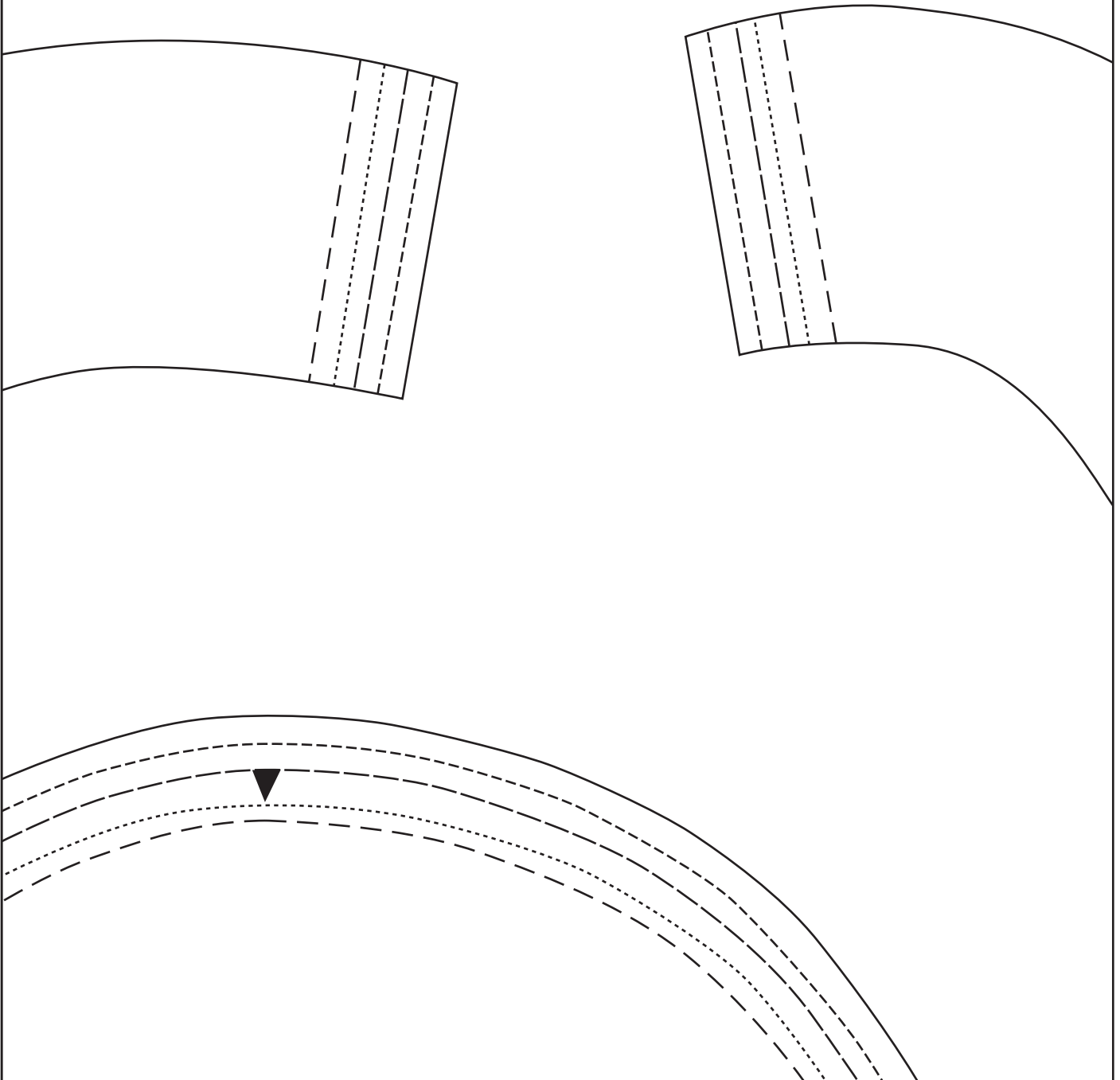
BUTTON BACK BLOUSE
FRONT YOKE
CUT 1 ON FOLD



2



3

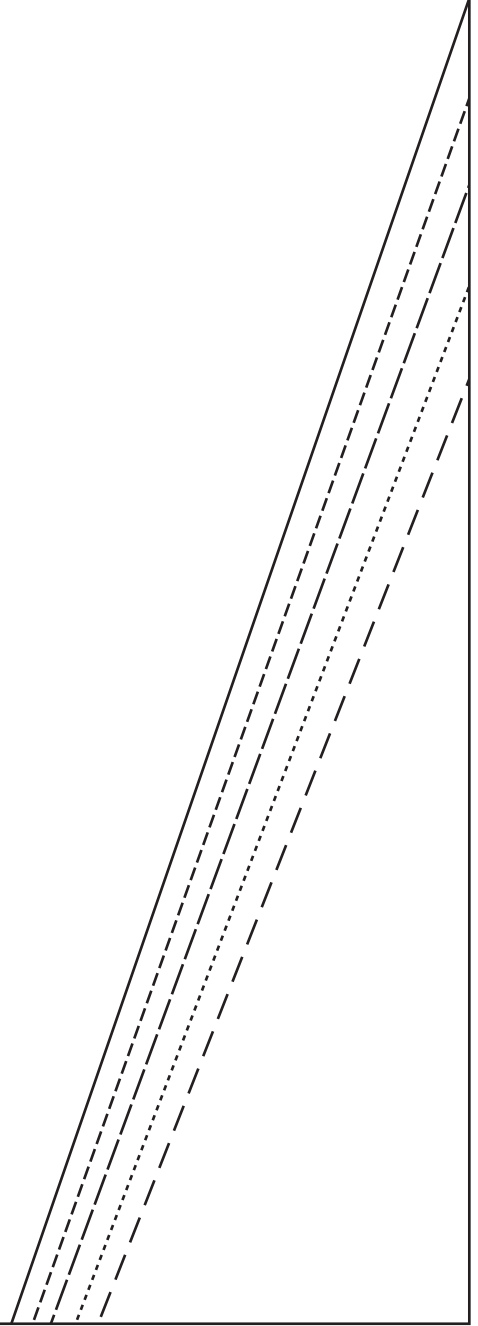


4



BUTTON BACK BLOUSE
BACK-NECKFACING
CUT 2





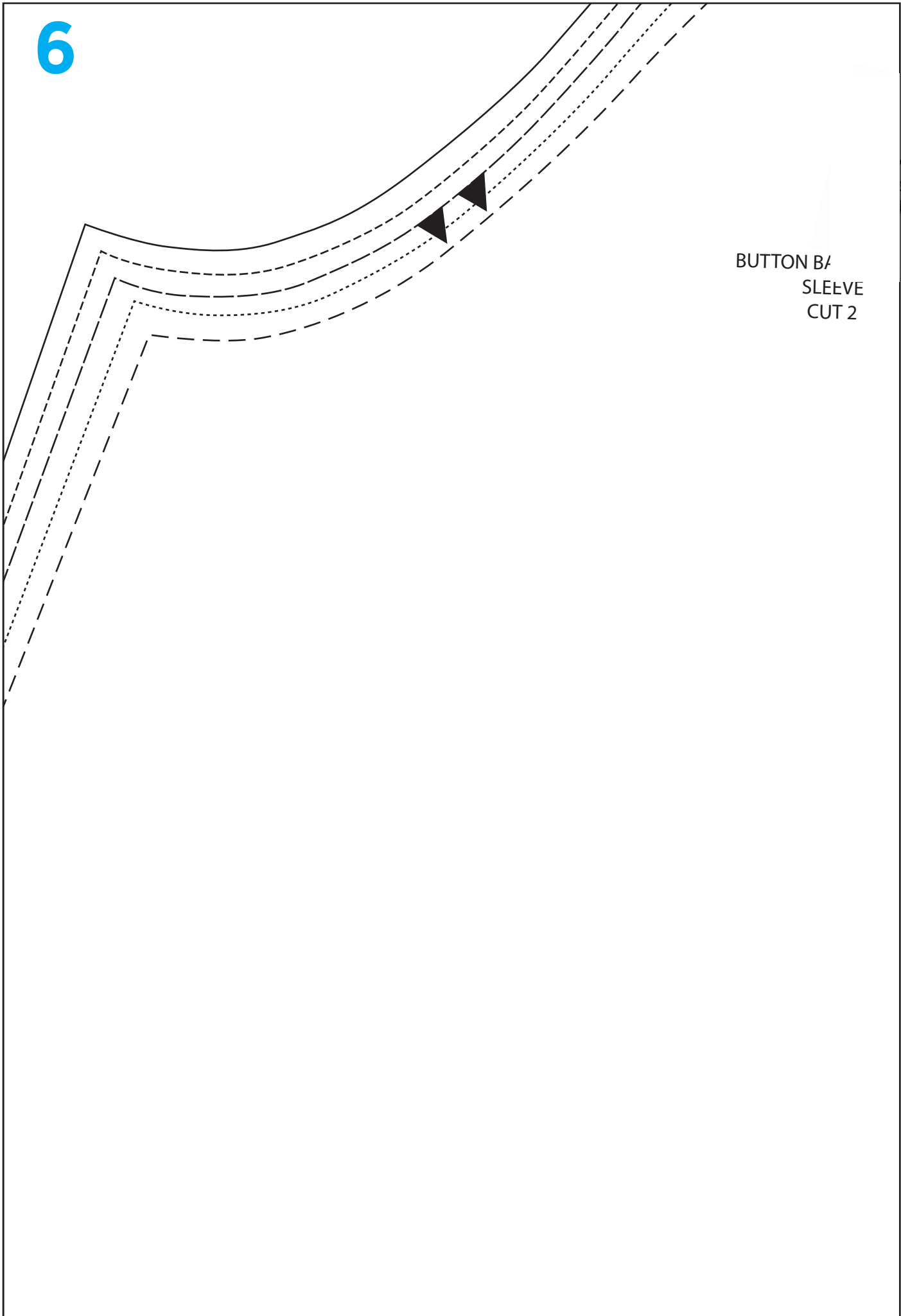
FOLD LINE

BUTTON BACK BLOUSE
CUFF
CUT 2



5

6

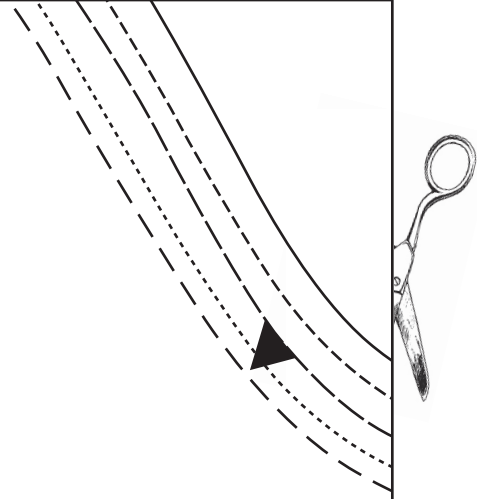


BUTTON B/
SLEEVE
CUT 2

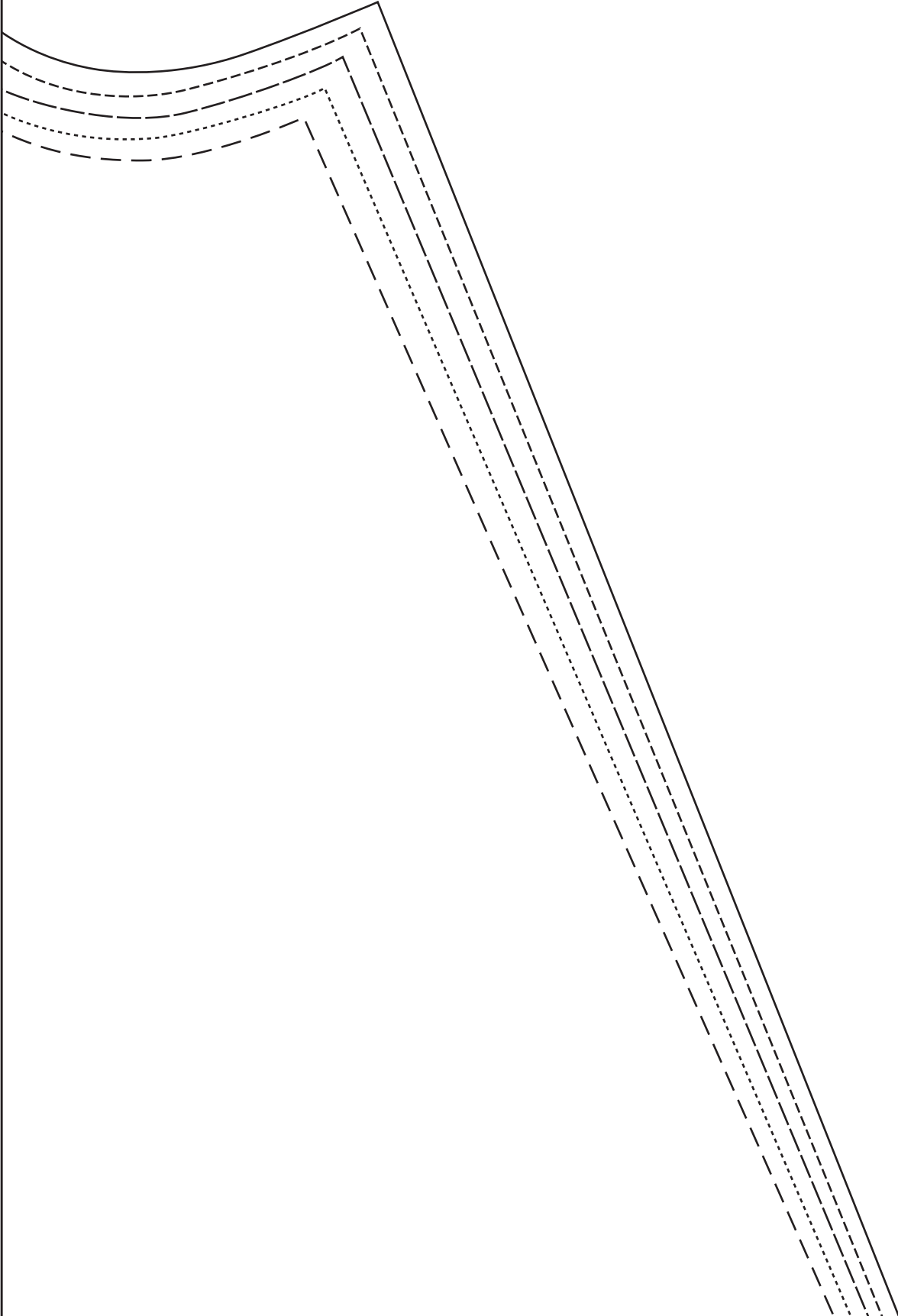


7

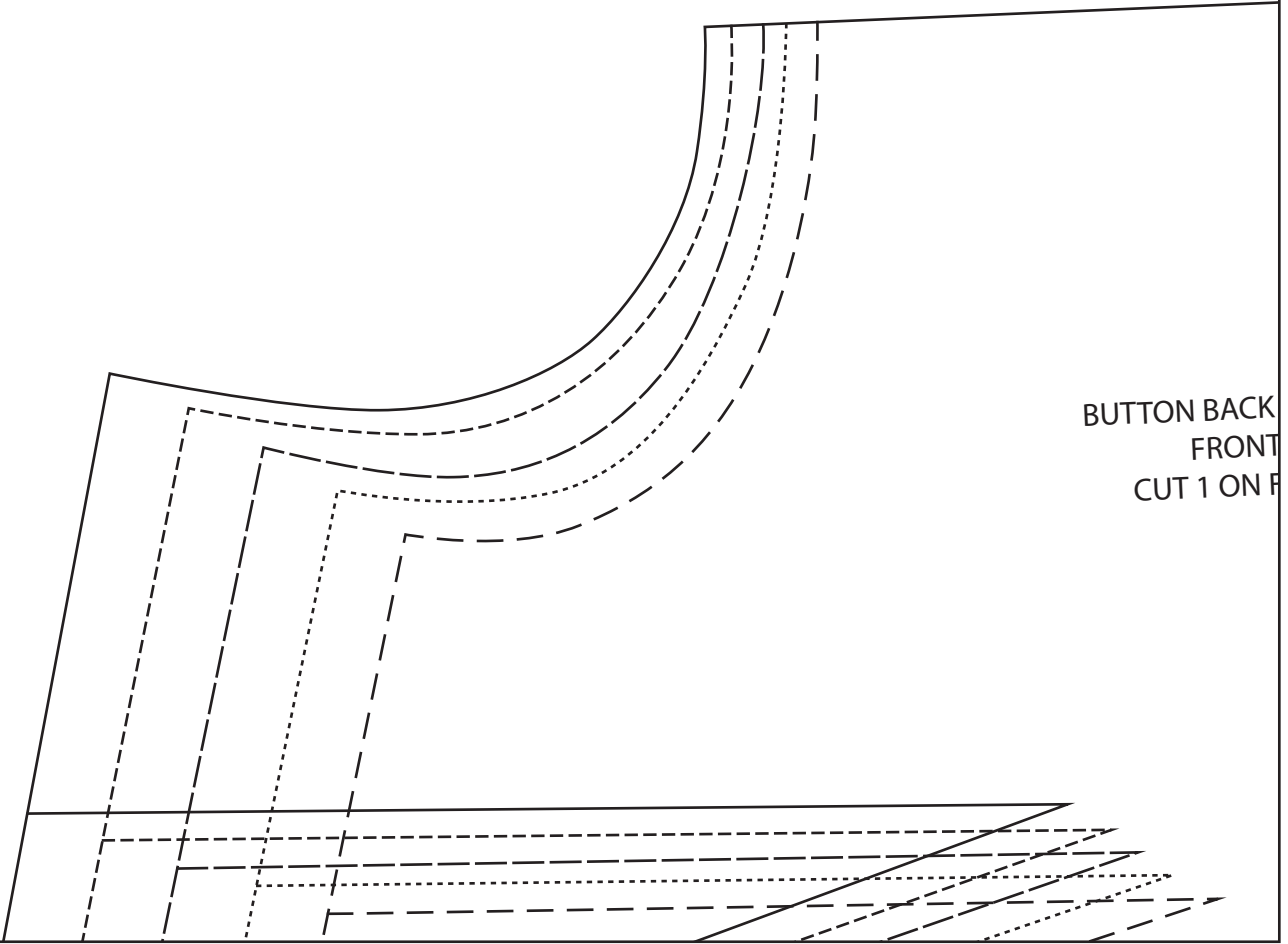
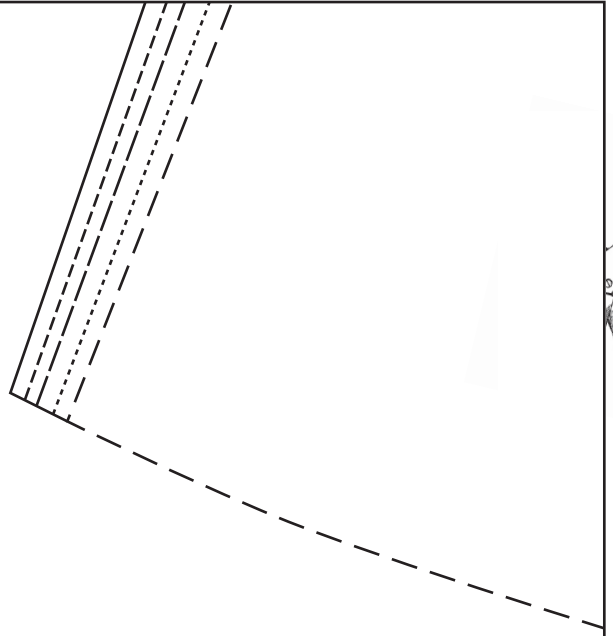
USE



8

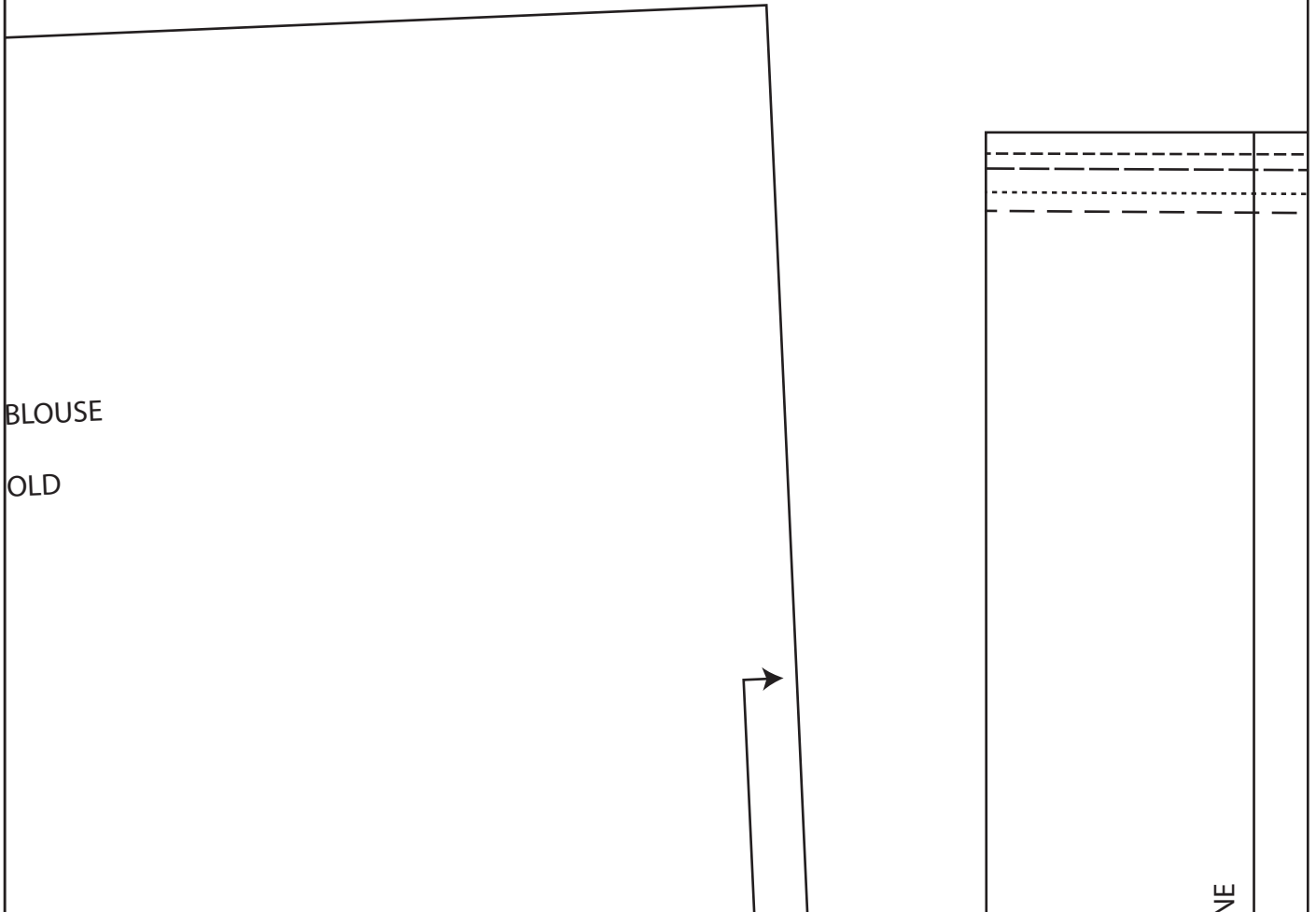
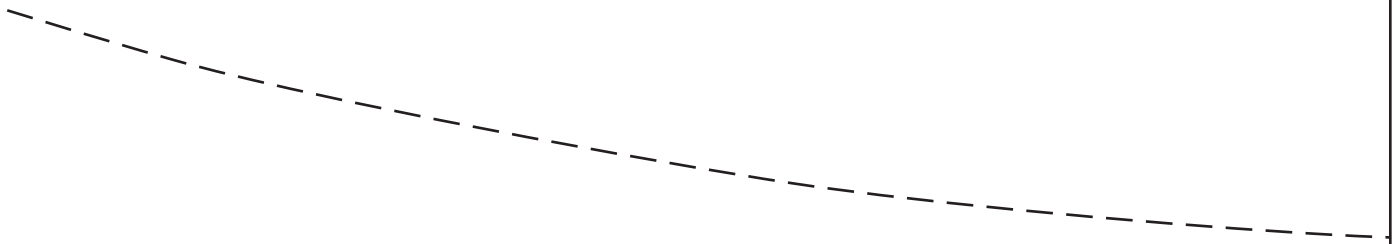


9



BUTTON BACK
FRONT
CUT 1 ON F

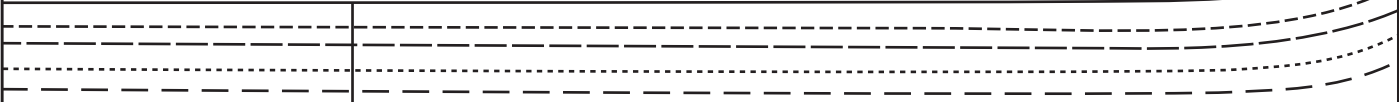
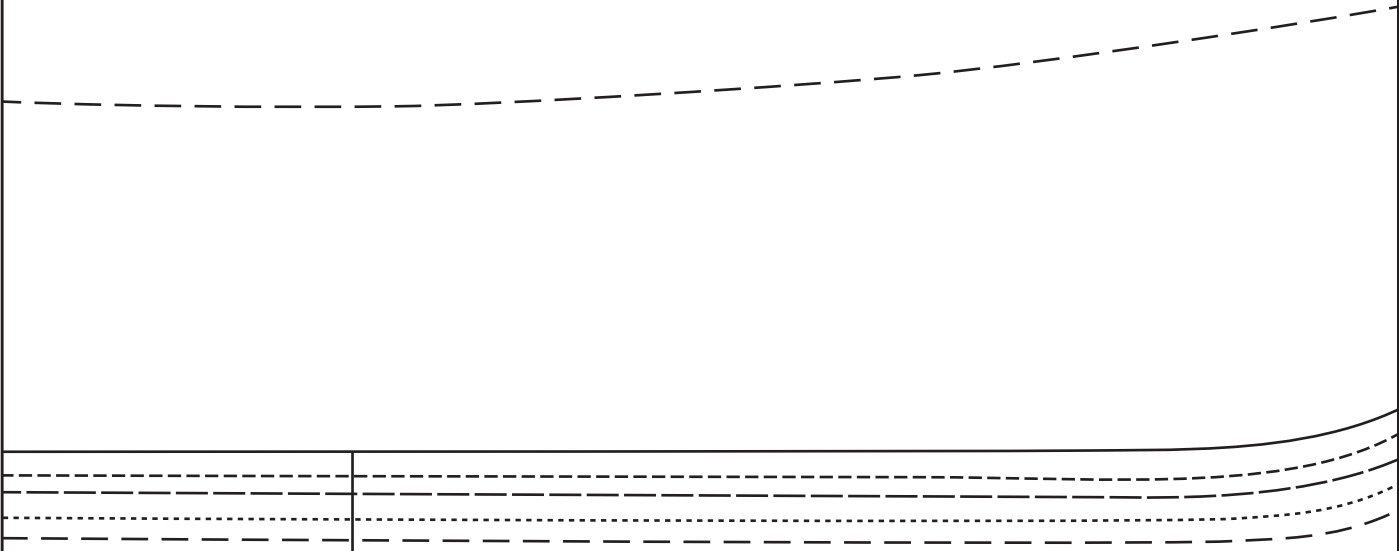
10



BLOUSE

OLD

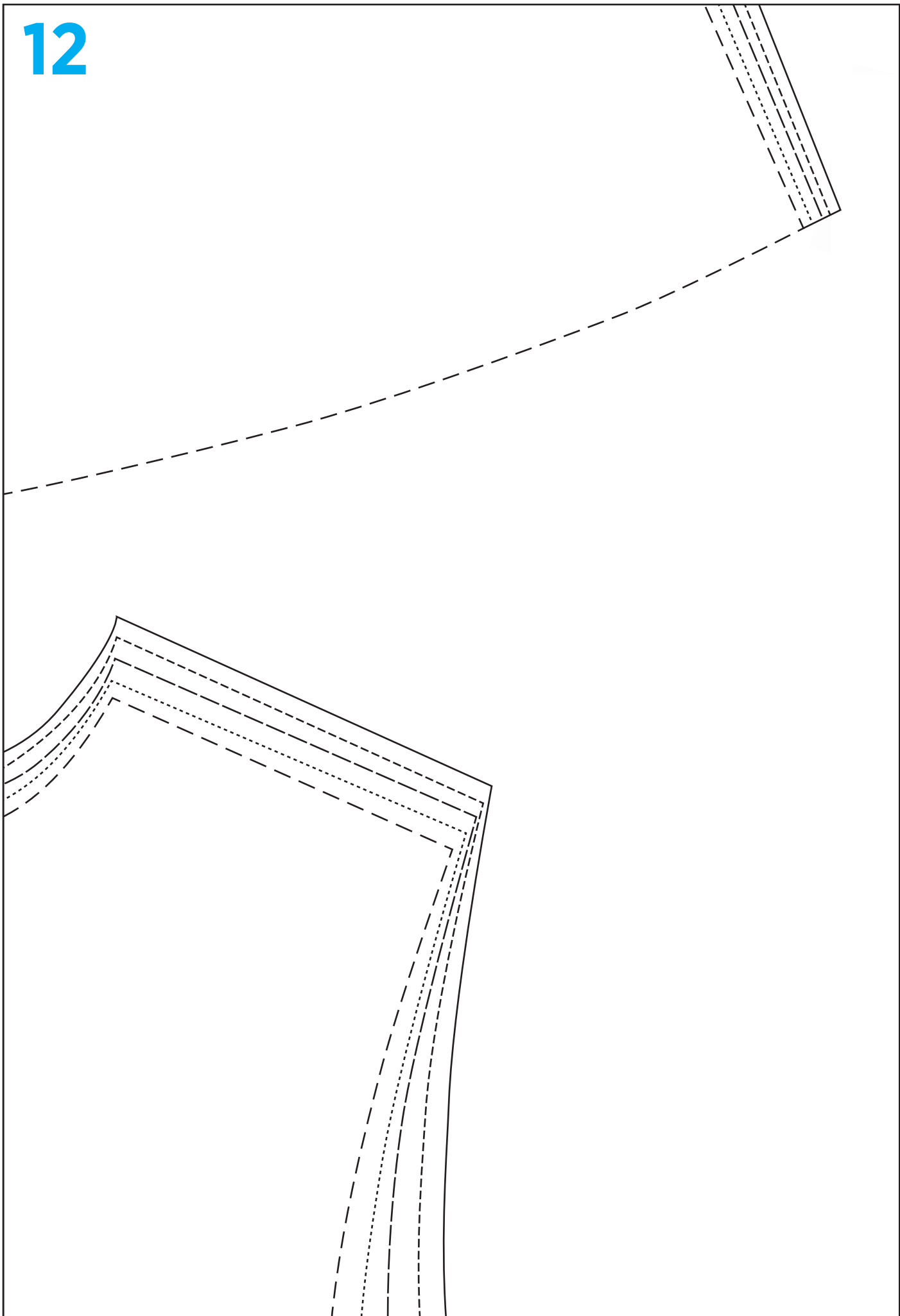
NE



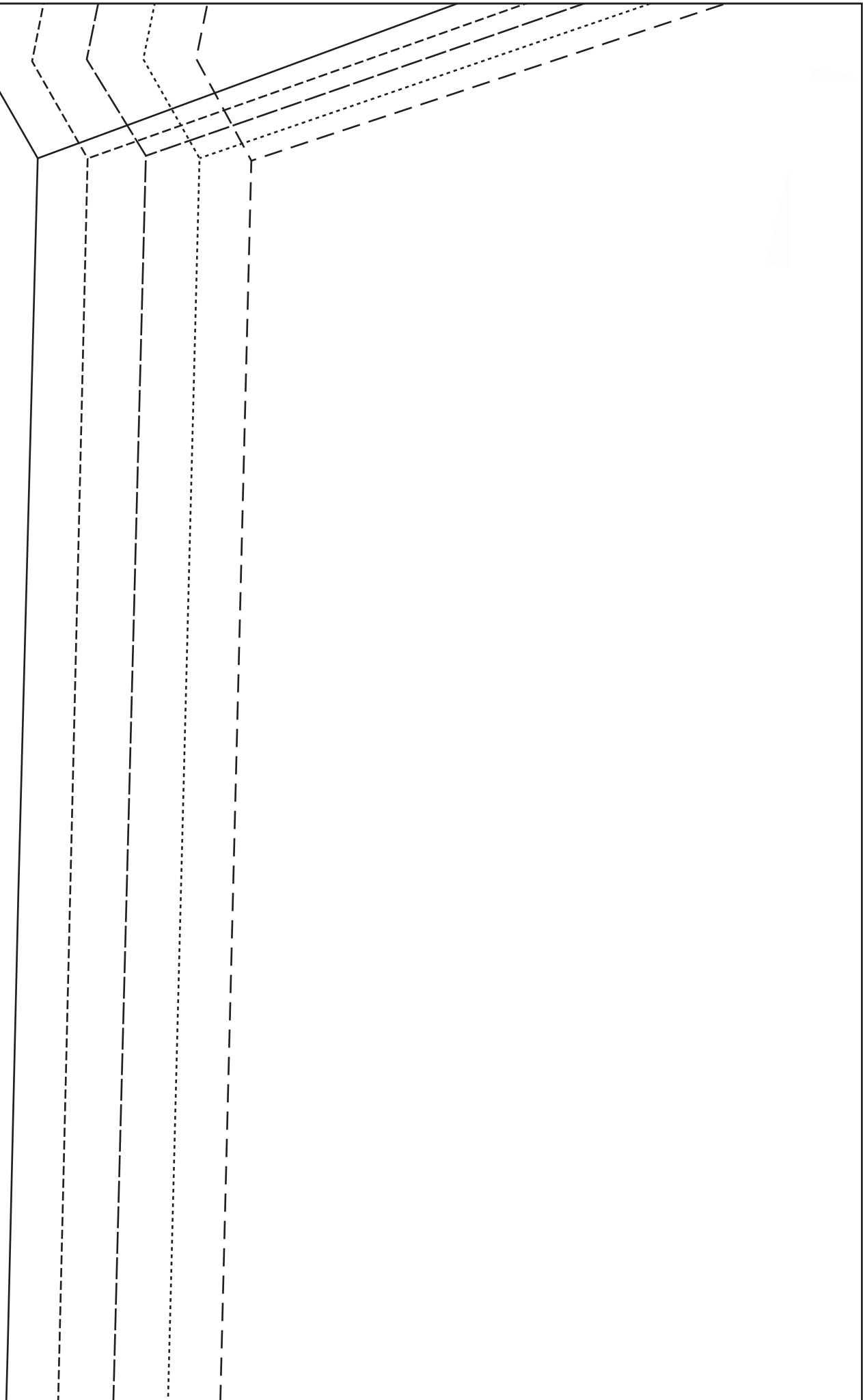
BUTTON BACK BLOUSE SIZE GUIDE

- — — SIZE 8
- SIZE 10
- SIZE 12
- SIZE 14
- SIZE 16

12



13



14

FOLD L

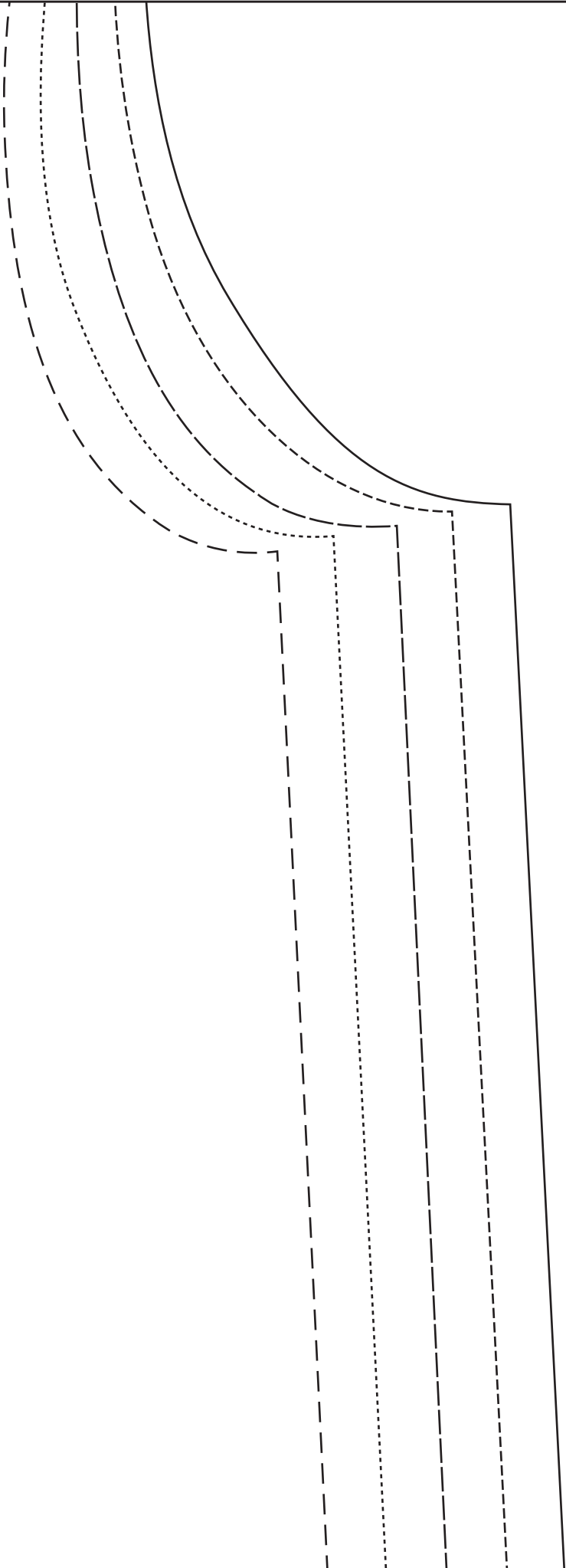


15

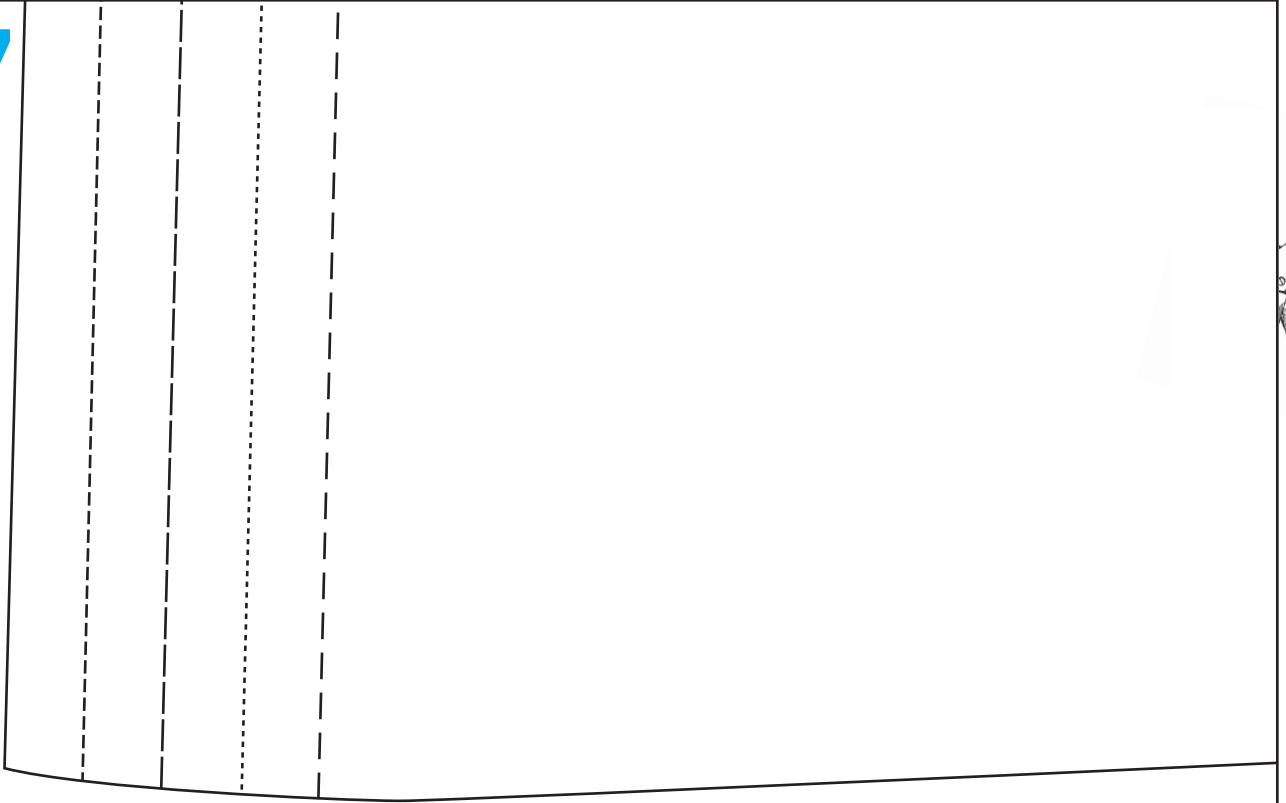
FOLD LINE

BUTTON BACK BLOUSE
BACK
CUT 2





17



18





20

