

### 123A Wrap dress

Burda sizes 36, 38, 40, 42, 44

Length from waist

80 cm (31 1/2 ins),

### Materials

Wool crêpe,

width: 150 cm (59 ins)

length: 3.00 – 3.00 – 3.00 – 3.05 – 3.05 m (3 3/8 – 3 3/8 – 3 3/8 – 3 1/2 – 3 1/2 yds).

Interfacing.

Vilene Bias Tape/ stay tape.

2 invisible zips, 22 cm (9 ins) long, and a special presser foot.

Recommended fabrics: Softly draping dress fabrics. Use only fabrics with two “good” sides”.

### Preparations

Print the pattern out on letter or A4 sized paper. It is **very** important to not scale the document. Your pattern will print on multiple pages, which you will then tile together. Arrange the sheets on a large, hard and flat surface matching up the numbers and letters (i.e. 6A to 6A). Cut or fold one of the sides and match the edge to it's corresponding side. Then, tape down in place so paper is secure.

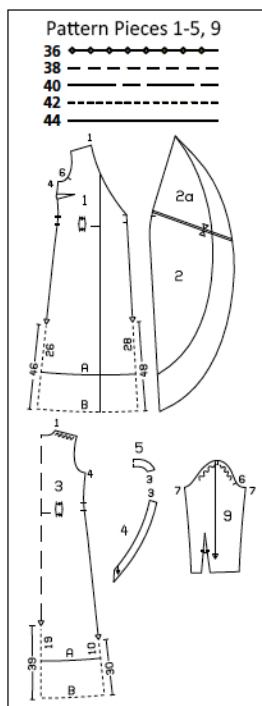
Trace the pattern pieces from the pattern sheet. Follow lines and details for styles 123A. Lengthen pieces 1 and 3 as indicated. Glue pieces 2 and 2a together on the joining lines.

Trace piece 1 twice from the pattern sheet. Important: For the right front, glue pattern pieces 1 and 2 together along the straight edges, beginning at hem edge. This will create a dart at the top (see also pattern layout). Turn the second traced front piece over and use it for the left front.

**Burda style magazine patterns do not have seam allowance included.**

Seam and hem allowance to be added:

Seams, edges and hem 1.5 cm (5/8 in), sleeve hems 4 cm (1 5/8 ins).



### Cutting Out

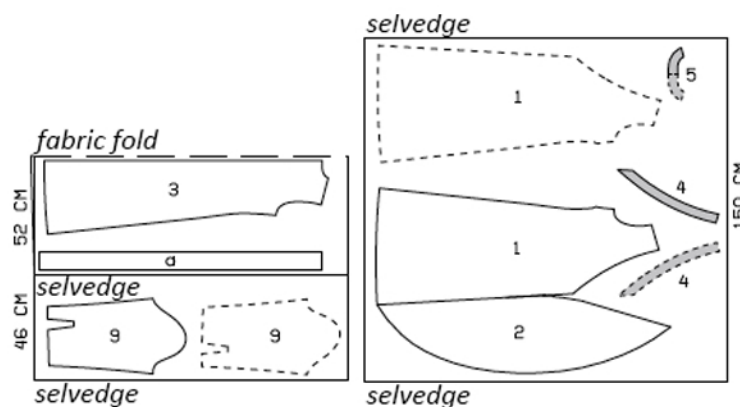
- 1 + 2 right front 1x
- 1 left front 1x
- 3 back 2x
- 4 front facing 2x
- 5 back facing, on a fold 1x
- 9 sleeve 2x

Draft the following pieces NOT included in the pattern:

- a) 2 tie bands, 120 – 124 – 128 – 132 – 136 cm (47 1/4 – 49 – 50 1/2 – 52 – 53 1/2 ins) long, 8 cm (3 1/4 ins) wide, finished width 4 cm (1 5/8 ins).

Interfacing: Iron to facing pieces. Iron Vilene Bias Tape/stay tape to front shoulder seam edges and to neck edges.

### Sizes 36-44



## Sewing

Stitch the centre back seam. Press seam allowances open. Stitch the bust darts. Press darts down. Work from the inside to stitch the pleats in the fronts and in the back, between the arrow marks. Lay the pleats in direction of arrows. Press the pleat seams. Topstitch close to the pleat seams.

Stitch the side seams. Leave slit open in right side seam. Press the seam allowances open and press the slit allowances to the inside. Stitch the shoulder seams on dress and on the facing.

Fold tie bands lengthwise, right side in. Trim one end of each at an angle. Stitch along the long edge and the angled end. Trim the seam allowances. Turn the bands right side out and press. Baste the bands to the front edges, between the markings, over the flounce.

On the right front, cut along centre of the dart at corner of neck edge, to 1 cm (3/8 in) below bottom seam mark (tie band joining). Lay one tie band on the right front, below corner of neck edge, and baste open end of tie band between the markings. Stitch the dart at corner of neck edge, below the marking, catching the tie band. Above the dart, press the seam allowance on the slanted front edge (not neck edge) to the inside, up to the top corner, then press seam allowances to the inside along the rounded front edge and along edge of hem allowance, up to left front edge. Turn under raw edges of pressed allowances and stitch in place. Press the darts forward.

Baste second tie band to left front edge, below corner of neck edge.

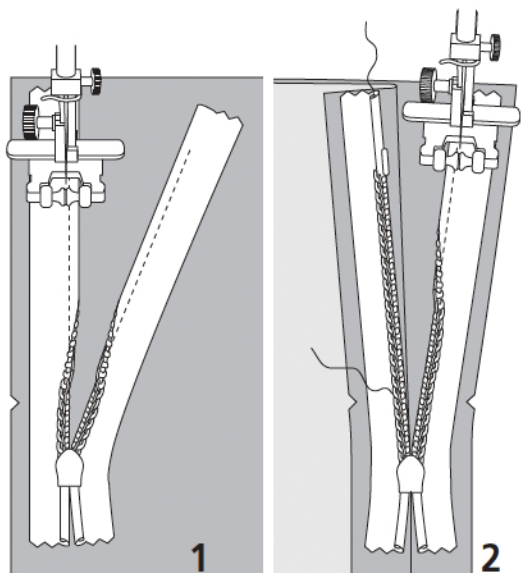
Stitch shoulder seams of facing. Lay facing right sides together with the fronts and back and pin in place. Stitch along neck edge and left front edge, catching the tie band. Trim seam allowances. At neck edge, turn facing up and stitch to seam allowances, as far as possible, close to seam. Turn facing to inside and press edges. On the right front, pin the narrow edge of the facing to inside of dart seam, and stitch from the right side. Sew inside edge of facing to the shoulder seams.

Below the facing, turn seam allowance on left front edge to inside and baste. Topstitch 7 mm (1/4 in) from left front edge.

On the sleeves, cut the darts along the centre, to approx. 2 cm (3/4 in) above the slit mark. Sew invisible zips to slit edges of sleeves, from hem line to slit mark, see "Helpful Hint" on page 16. At tops of slits, trim away the extending ends of the zips and bind with a scrap of fabric. Stitch the darts above the slit marks. Press points of darts flat.

Stitch the sleeve seams. Press the sleeve hem allowances to inside. Sew sleeve hems by hand.

Set in sleeves, easing sleeve caps.



These special zippers come in various lengths. The zipper should be at least 2 cm (3/4 in) longer than the slit. It is sewn in place before the seam below the slit is stitched. A special presser foot is required to sew the zipper in place.

### **Sewing the zipper in place:**

Open the zipper and push the coil back with your thumbnail to reveal the seam marking between the tape and the coil. Place the open zipper right side down on the right fabric side of one slit edge.

In order to stitch the zipper in place exactly along the marked seam line, you must first calculate the distance between the tape edge and the fabric edge as follows: width of seam allowance minus 1 cm (3/8 in) tape width = distance from edge of fabric. This will yield a value of 5 mm (3/16 in) if the width of the seam allowance is 1.5 cm (5/8 in).

Pin the top end of the zipper tape in place, the calculated distance from the edge of the fabric. The bottom end of the zipper will extend past the marked end of the slit. Place the presser foot on the zipper so that the coil is in the notch to the right of the needle (1). Stitch zipper in place, from the top to the marked end of the slit. Close zipper.

Place the other zipper tape face down on the opposite slit edge and pin in place at the top. Open zipper again. Place the presser foot on the top end of the zipper so that the coil is in the notch to the left of the needle (2). Sew the zipper in place, from the top to the end of the slit. Close zipper.

Now stitch the seam below the zipper, from bottom to top. Turn the loose lower end of the zipper out of the way, over the seam allowance. Stitch as close as possible to the last stitches of the zipper seams. Trim away excess zipper and bind the end with a scrap of fabric.



### Additional Information:

**Burda patterns do not include seam and hem allowances.** We recommend adding 1-2 cm (3/8 - 3/4 inch) for seams and 2-5 cm (3/4 - 2 inch/es) for hems. Refer to your specific pattern instructions for exact measurements.

The fabric requirements are based on the fabric used for the original designs. These amounts will change if you use fabric of a different width. The pattern of the fabric determines whether all the pieces must be cut in the same direction or whether some can be reversed to save fabric.

The cutting layout printed with the instructions shows the best way to place the pattern pieces on our original fabric. Fold the fabric double with the right side facing in. The fabric then has a fold edge and a selvedge edge. When cutting from a single fabric layer, the right side should face up.

Pattern pieces which are shown in the cutting layout with broken outlines should be pinned to the fabric with their printed side facing down.

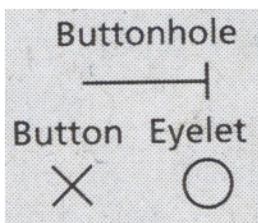
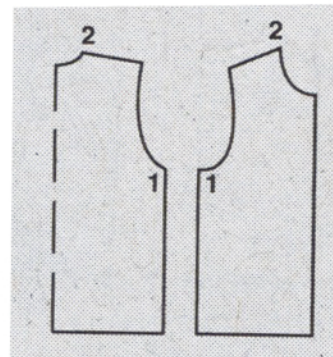
Grey shaded areas in the cutting layout indicate which pieces are to be interfaced.

Transfer the pattern piece lines to the wrong side of your fabric with burda dressmaker's carbon paper. Hand-baste along lines (e.g. for pockets or centre front) to make them visible on the right side of the fabric.

### Key Symbols:

#### Seam numbers

show where pattern pieces must be sewn together. Match pieces with the same numbers.

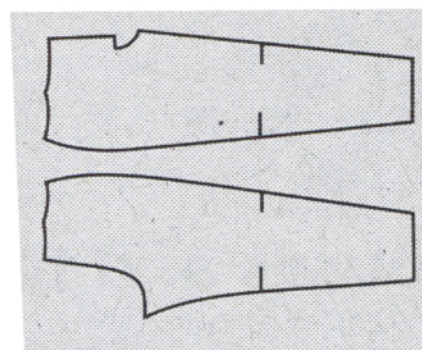


#### Seam marks

on long seams. Match the small symbols to one another.



**Presser foot**  
is the symbol for seam and top-stitching lines.



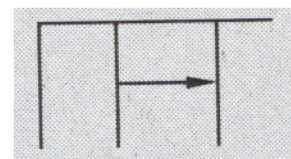
#### Scissors

indicate edges to be cut without seam allowances and also slash lines, e.g. pocket openings.



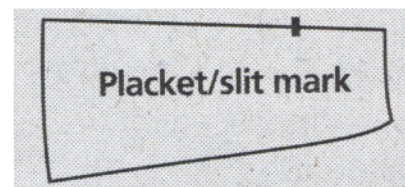
#### Pleat symbol

Fold pleat in direction of arrow.



#### Placket/slit mark

Indicates beginning/ end of placket/slit.



**Gather**  
**Ease**  
**Stretch**

