

# VICTORY

PATTERNS

## BOUNDLESS STYLE // SOPHIA SKIRT

**COPYRIGHT INFORMATION:**

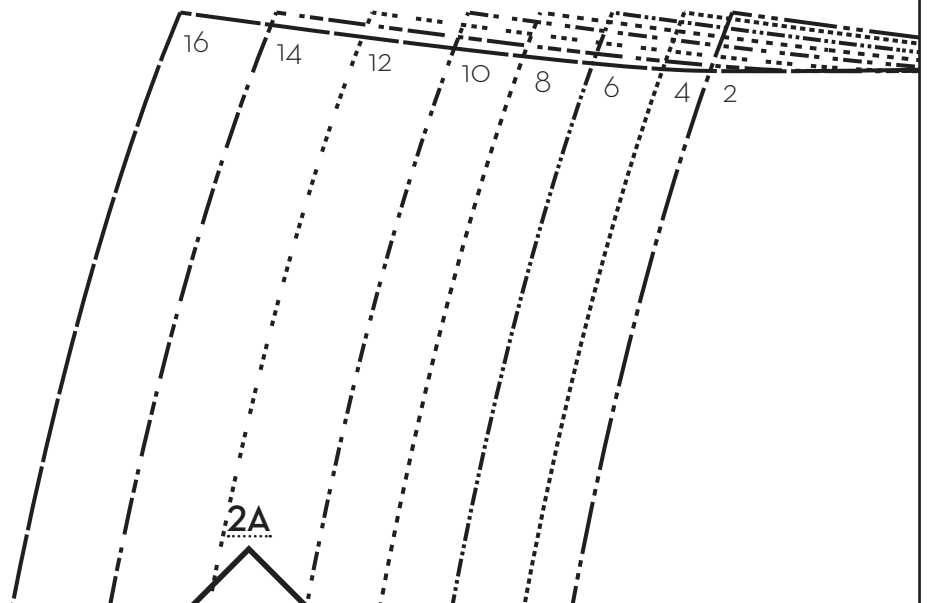
This pattern is for private use only and is not to be reproduced for commercial use.  
The contents, design, images and layout are copyright ©Victory Patterns

2" Scale Test

5cm Scale Test

1A

Pattern includes seam allowance



# SYMBOL LEGEND



Cut on fold grainline



Notch for aligning pieces together



Match points



Zipper end



Lengthen/shorten line



Dart

1A

1B

2B

Match point for aligning  
to waistline of bodice  
or waistband



1B

1C



2C

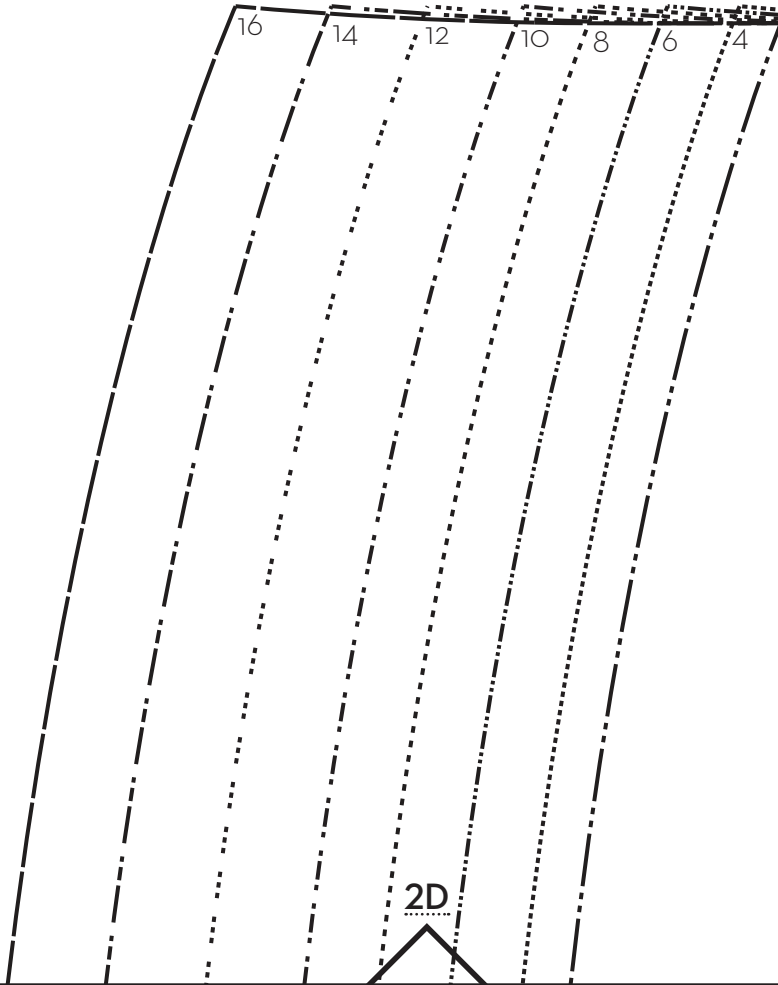




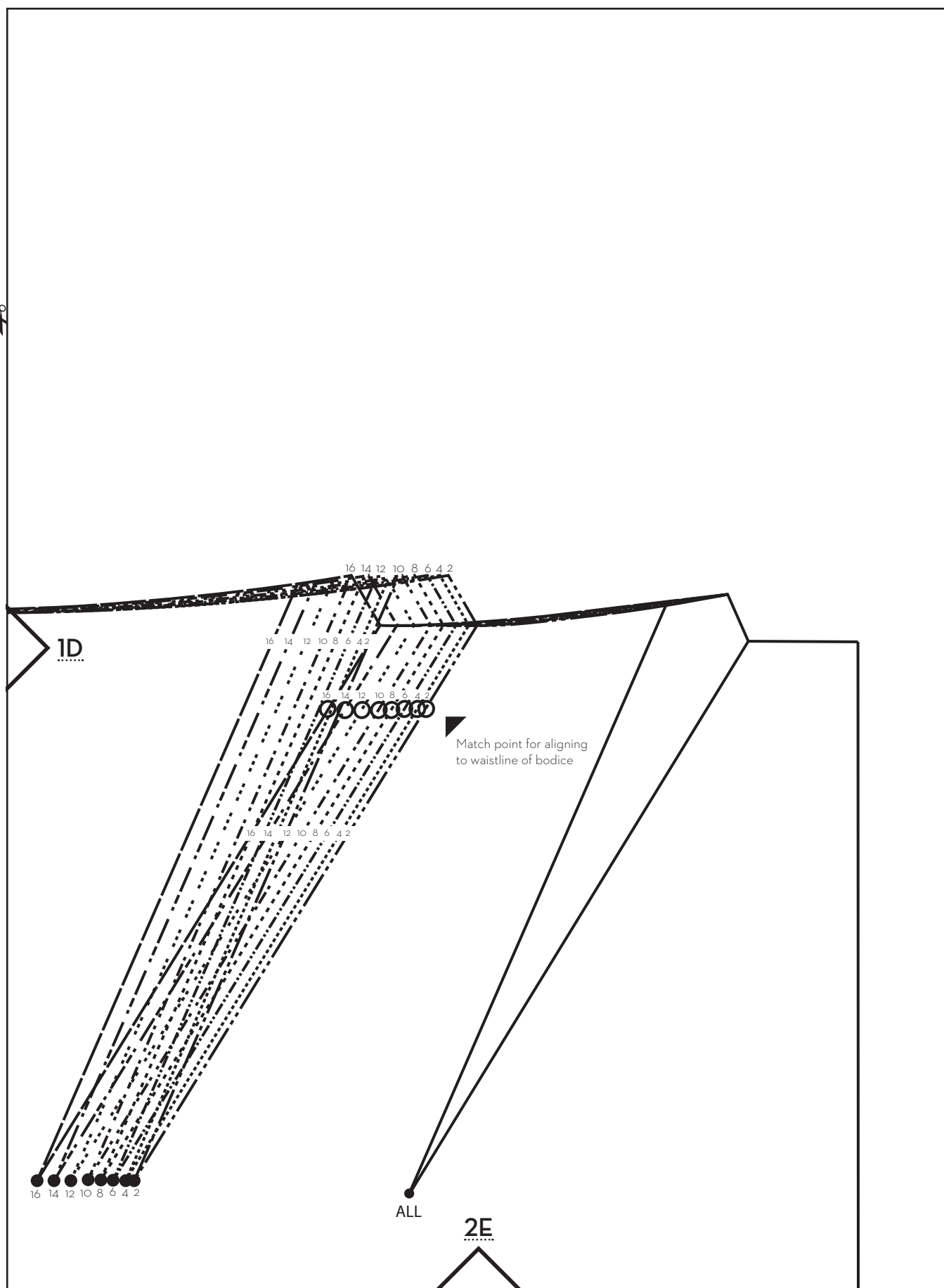
1C

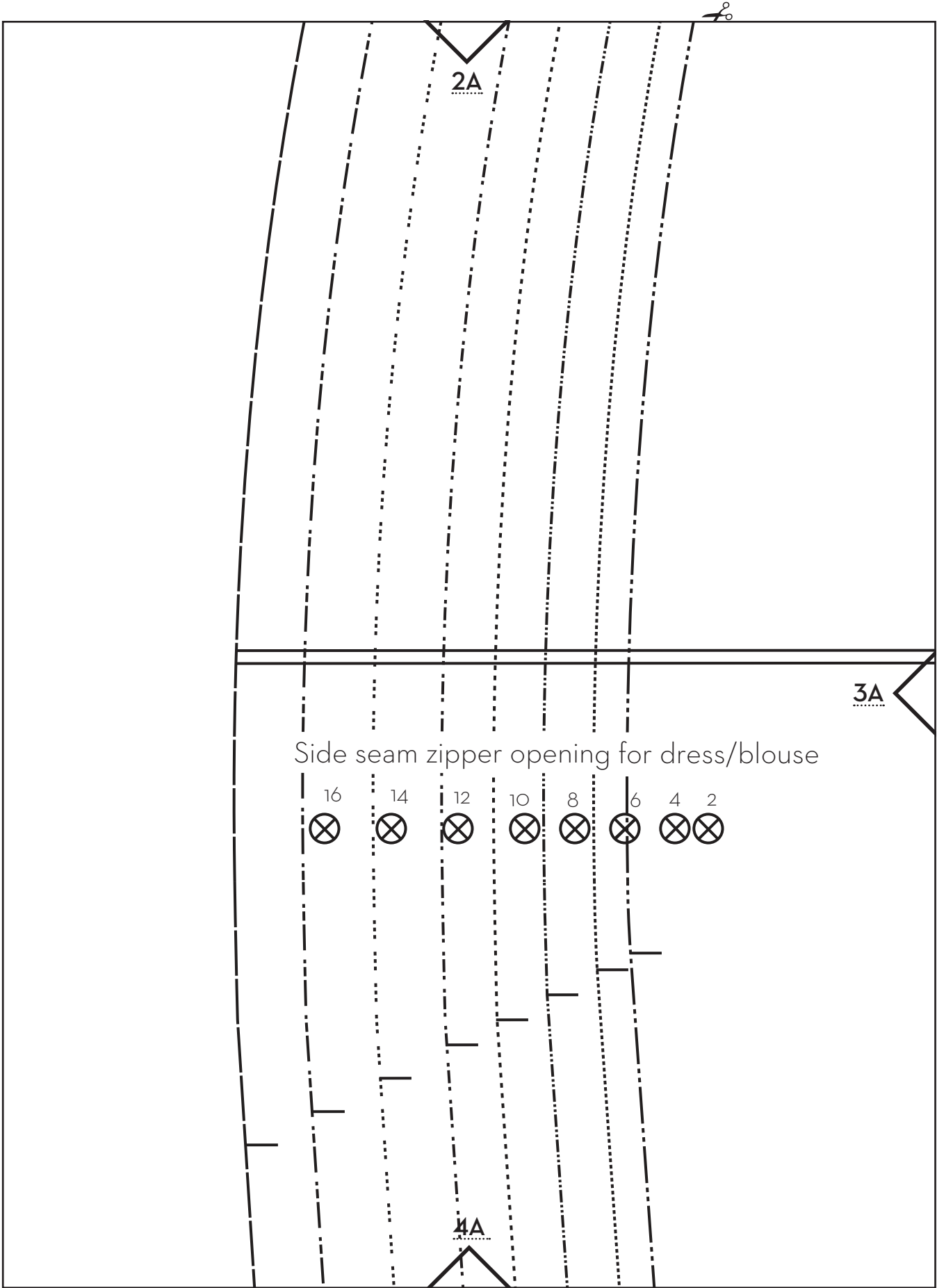


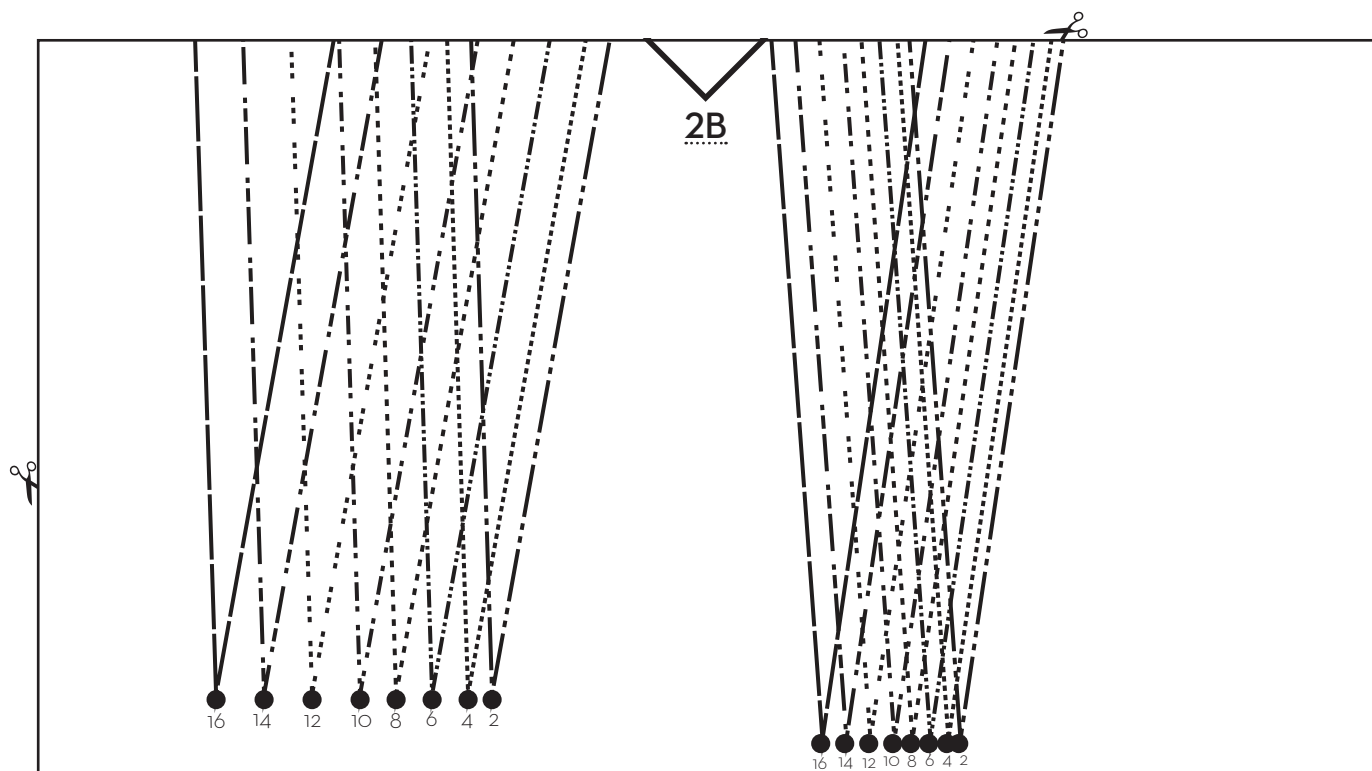
1D



2D







LENGTHEN / SHORTEN LINE



B

VICTORY PATTERNS

SOPHIA SKIRT  
BACK

✂ 2 SELF

4B



2C



3B



Center back zipper  
for separate skirt



4C

3C







2D



Side seam zipper opening for dress/blouse

16

14

12

10

8

6

4

2



3C

3D

4D



2E



LENGTHEN / SHORTEN LINE



3D

A



VICTORY PATTERNS

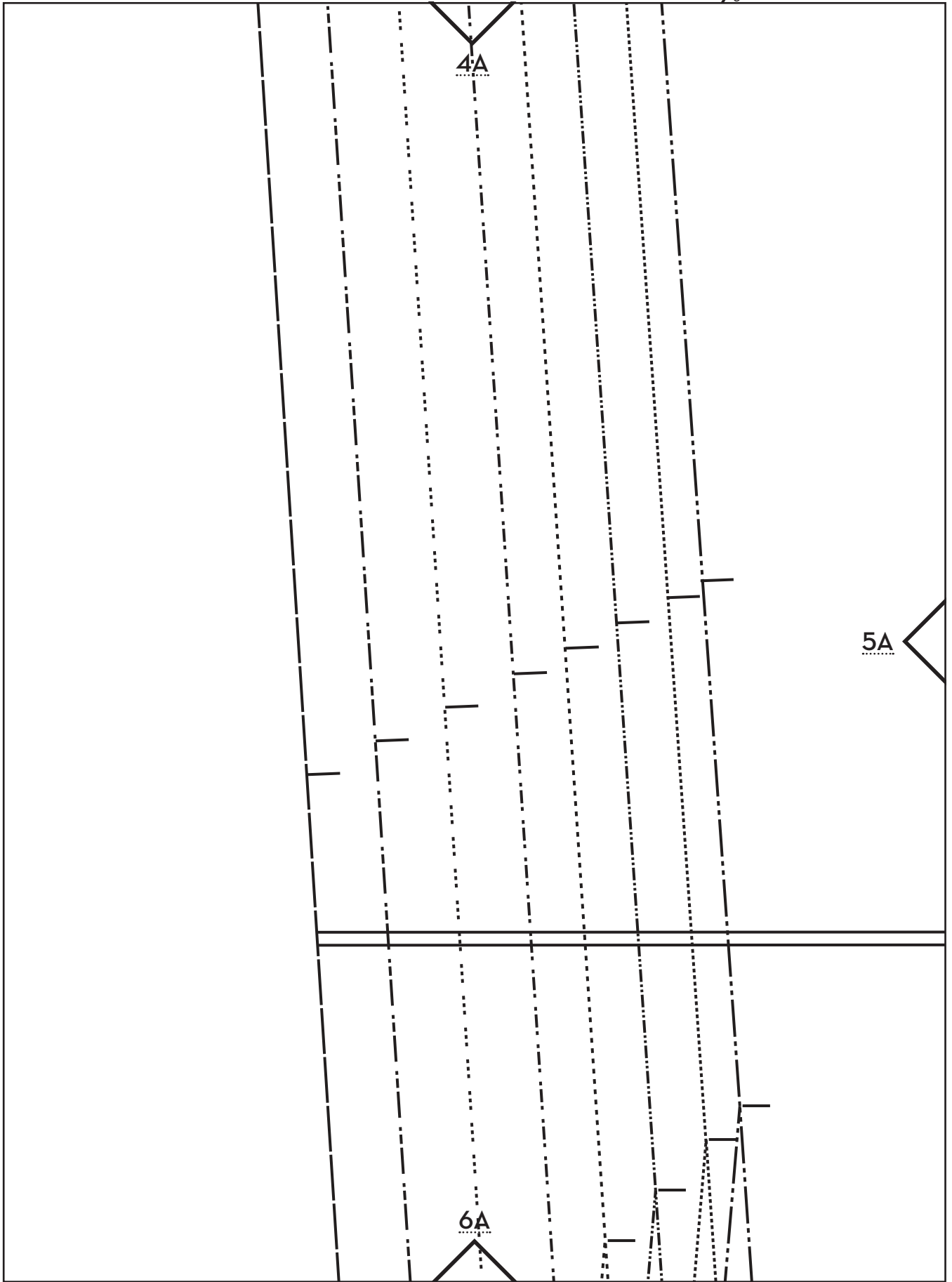
SOPHIA SKIRT  
FRONT

✂ 1 SELF (ON FOLD)

CUT ON FOLD

4E







4B



5A



5B

LENGTHEN / SHORTEN LINE

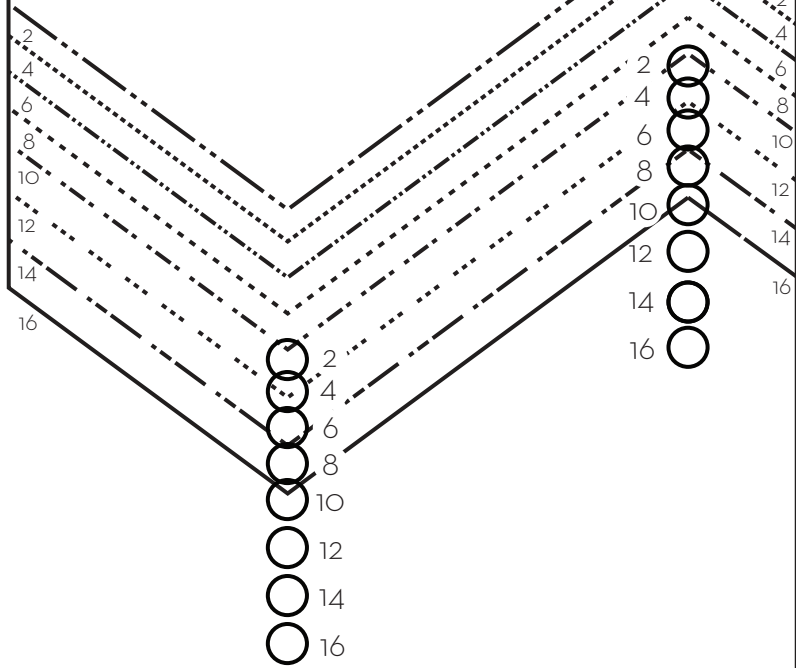


6B

CUT HERE FOR COCKTAIL-LENGT



4C

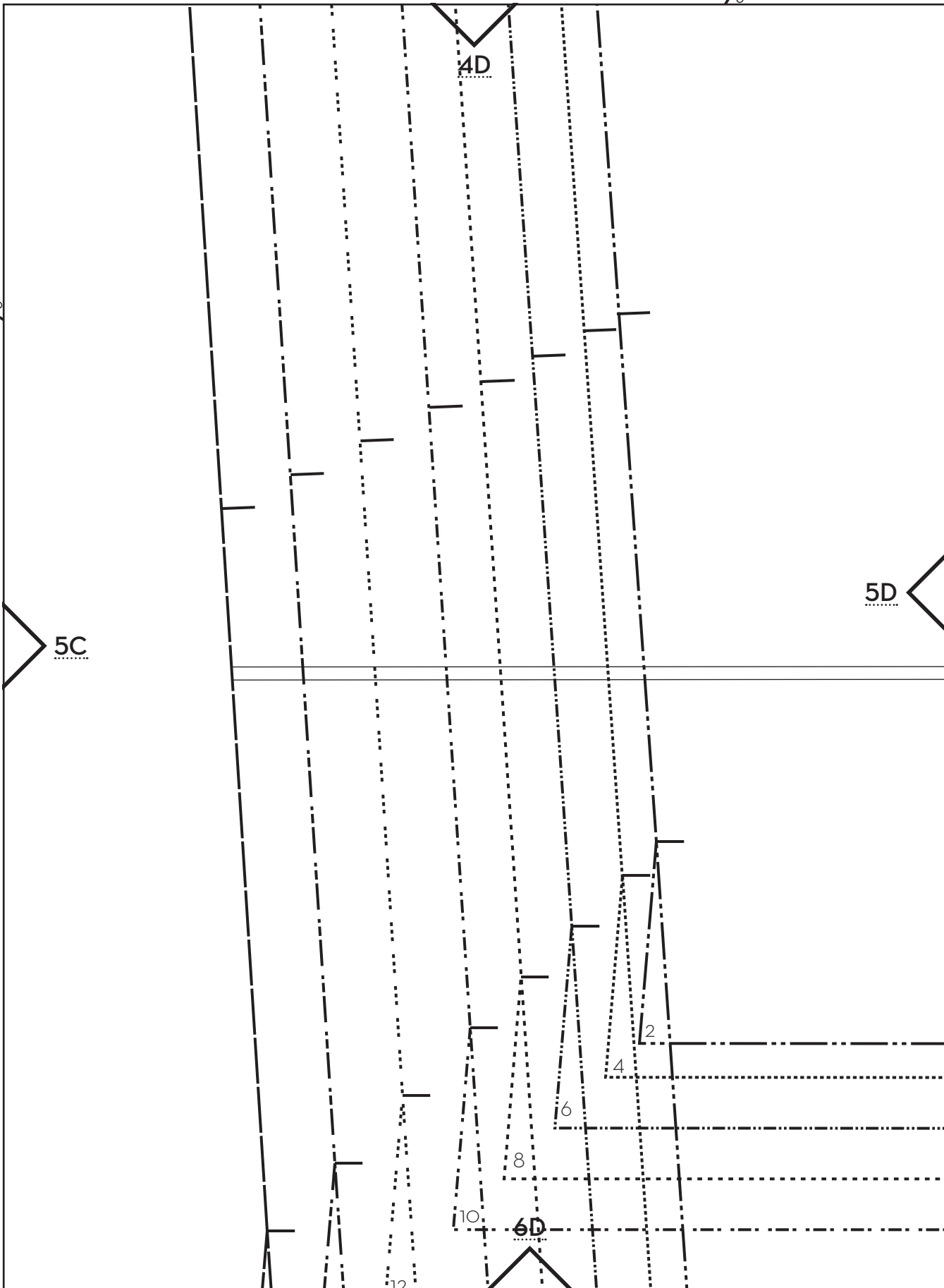


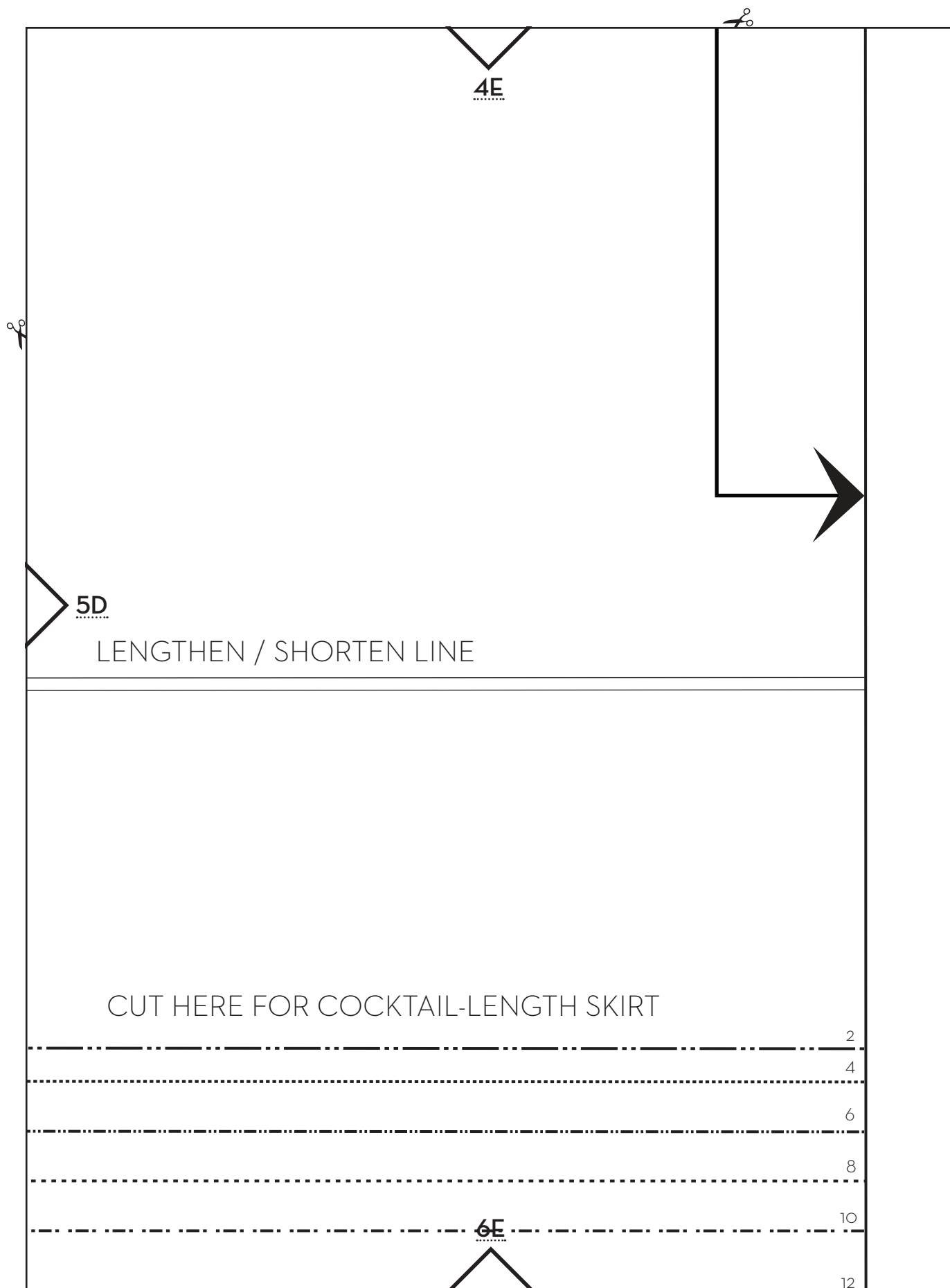
5B

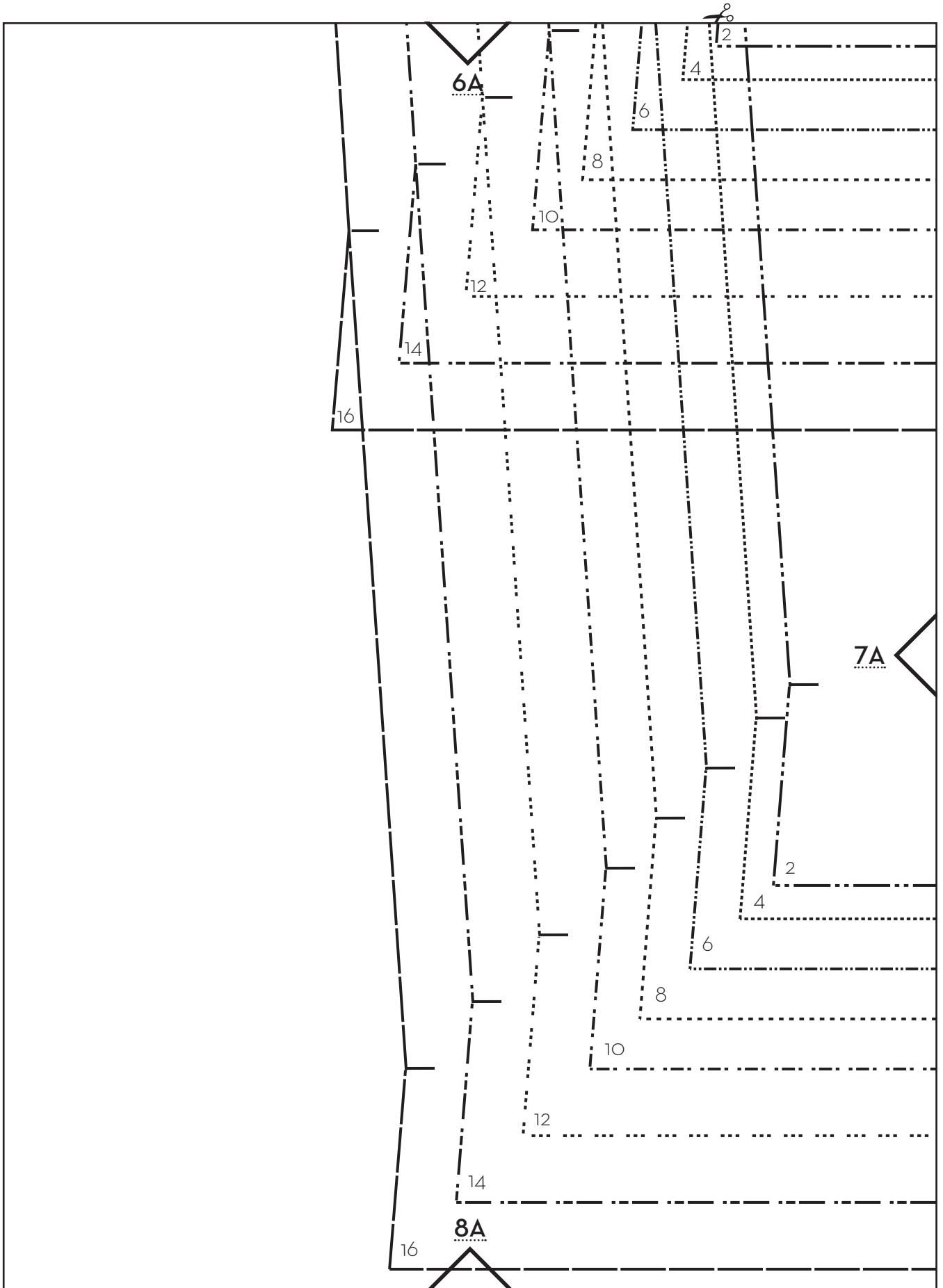
5C

6C

H SKIRT











6B



7A



7B

CUT HERE FOR TEA-LENGTH SK

8B





6C

2

4

6

8

10

12

14

16



7B

IRT

7C



2

4

6

8

10

12

14

16



14

6D

16



7C

2

4

7D

6

8

10

12

14

16



6E

14

16



CUT HERE FOR TEA-LENGTH SKIRT



7D

2

4

6

8

10

12

14

16