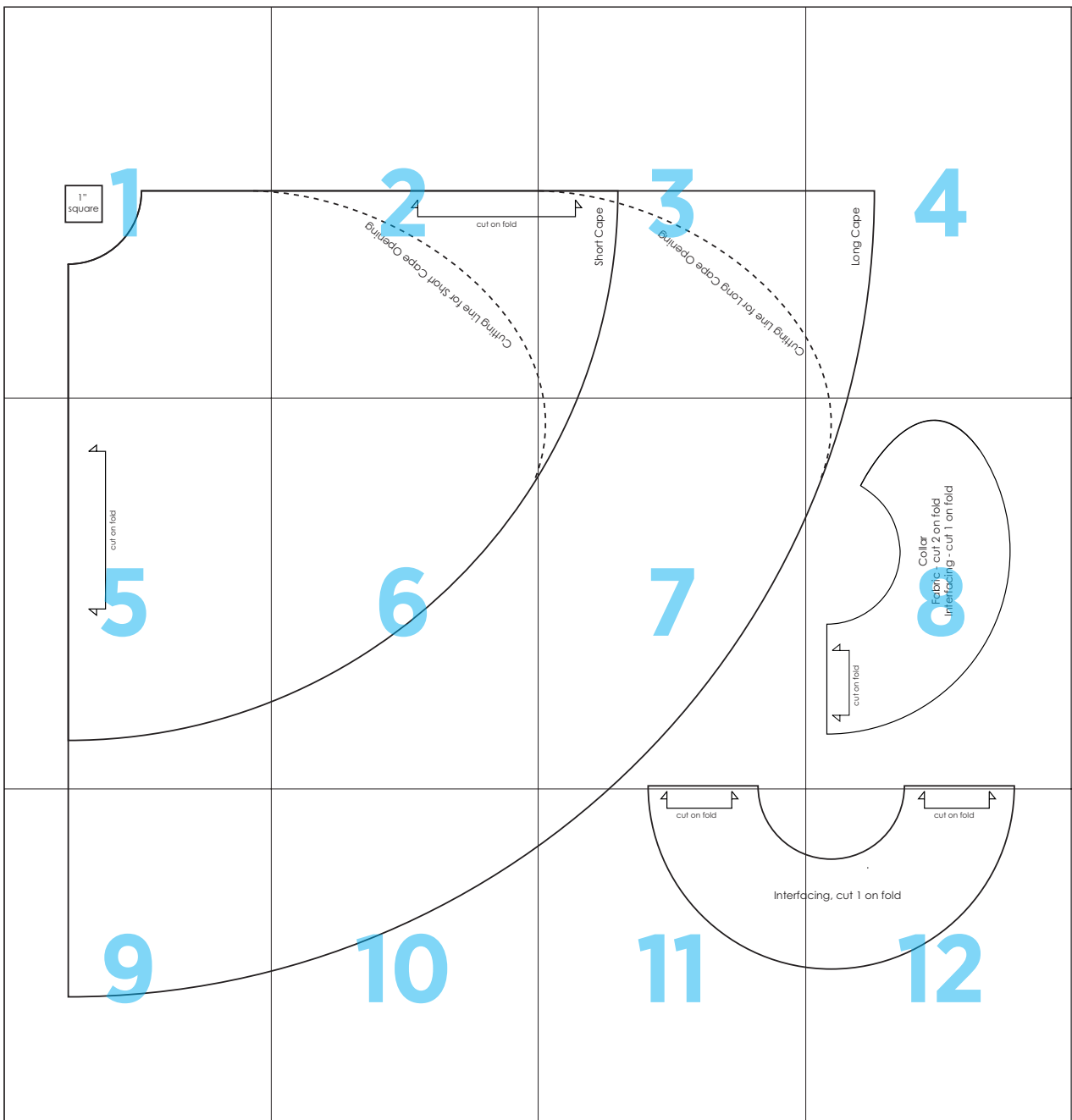


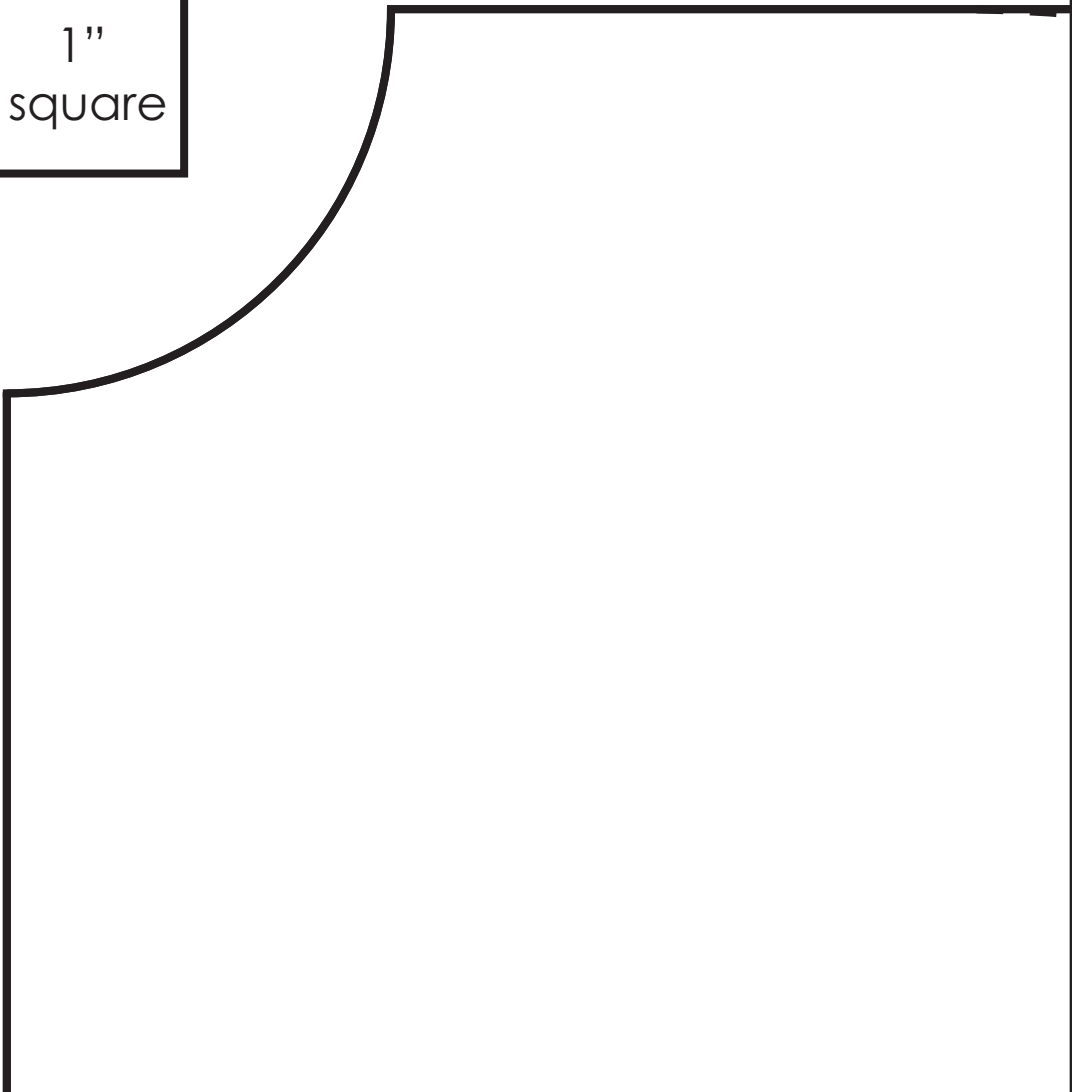
# Cape



1



1"  
square



2

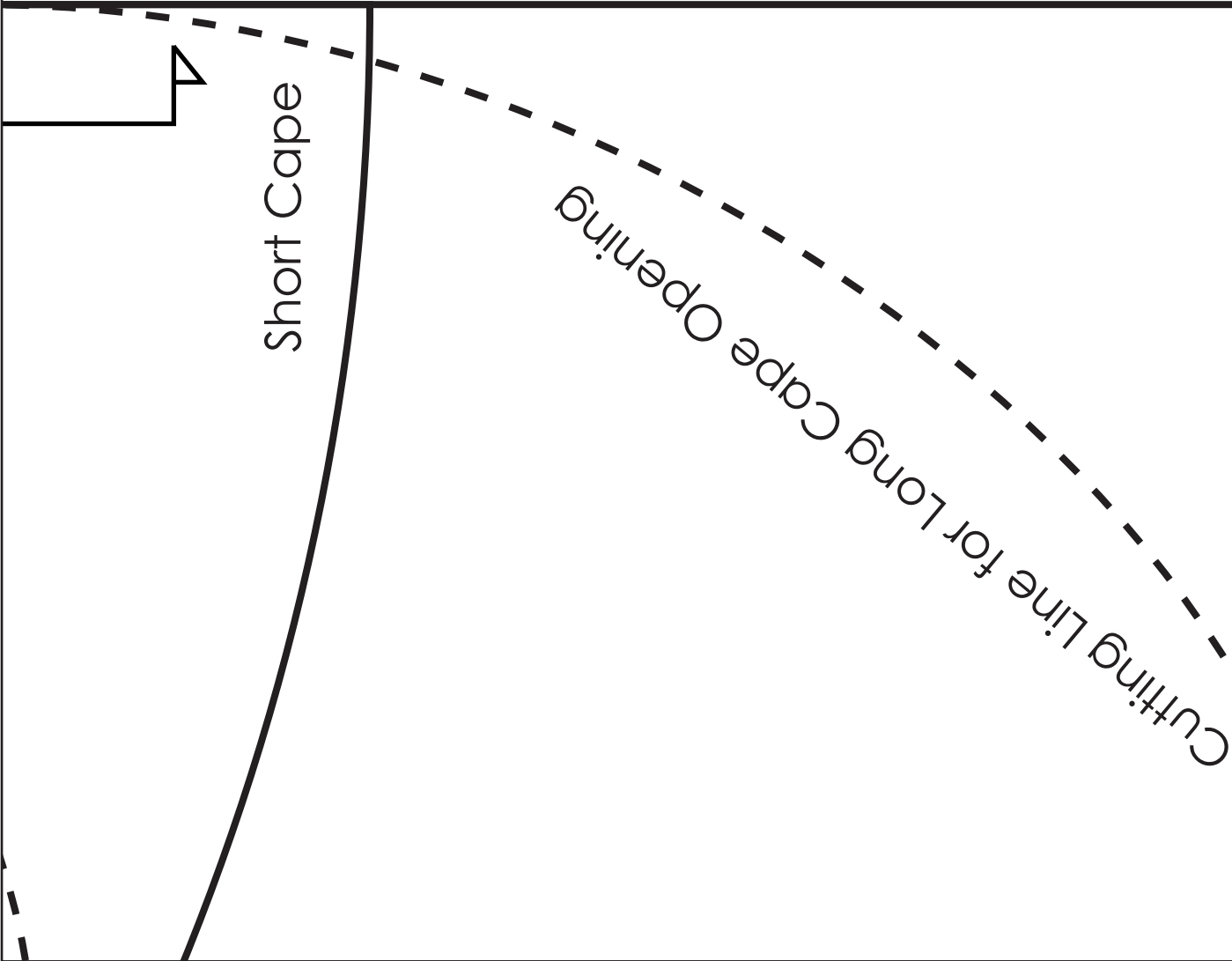


4

cut on fold

Cutting Line for Short Cape Opening

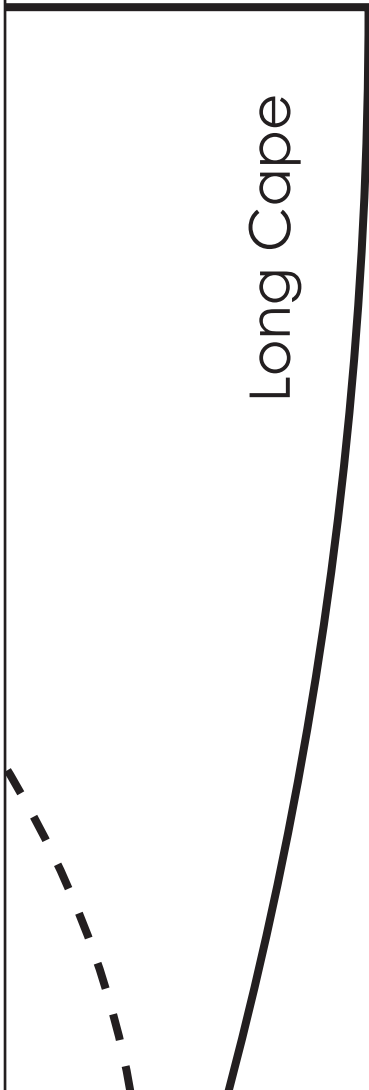
3



4



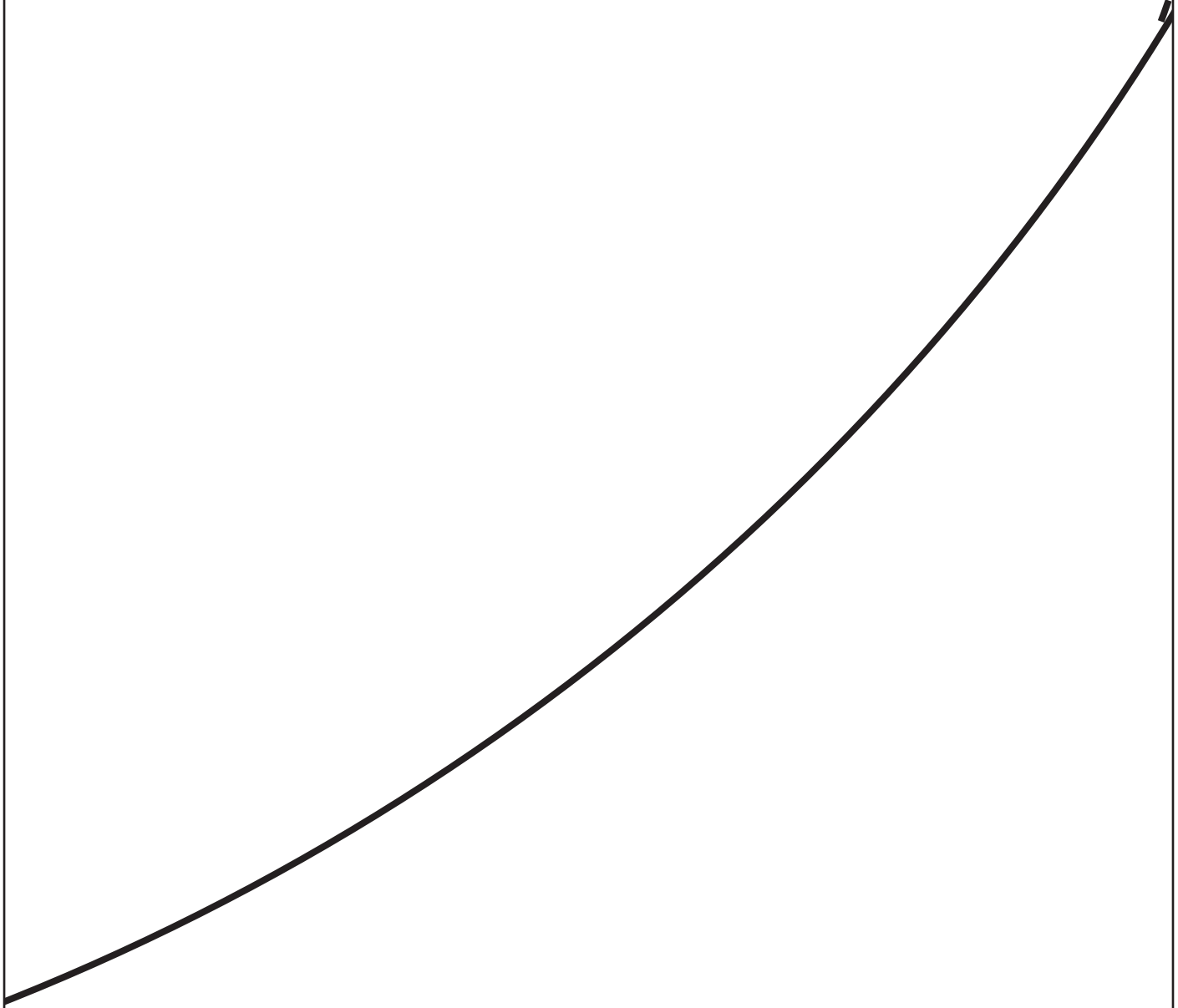
Long Cape

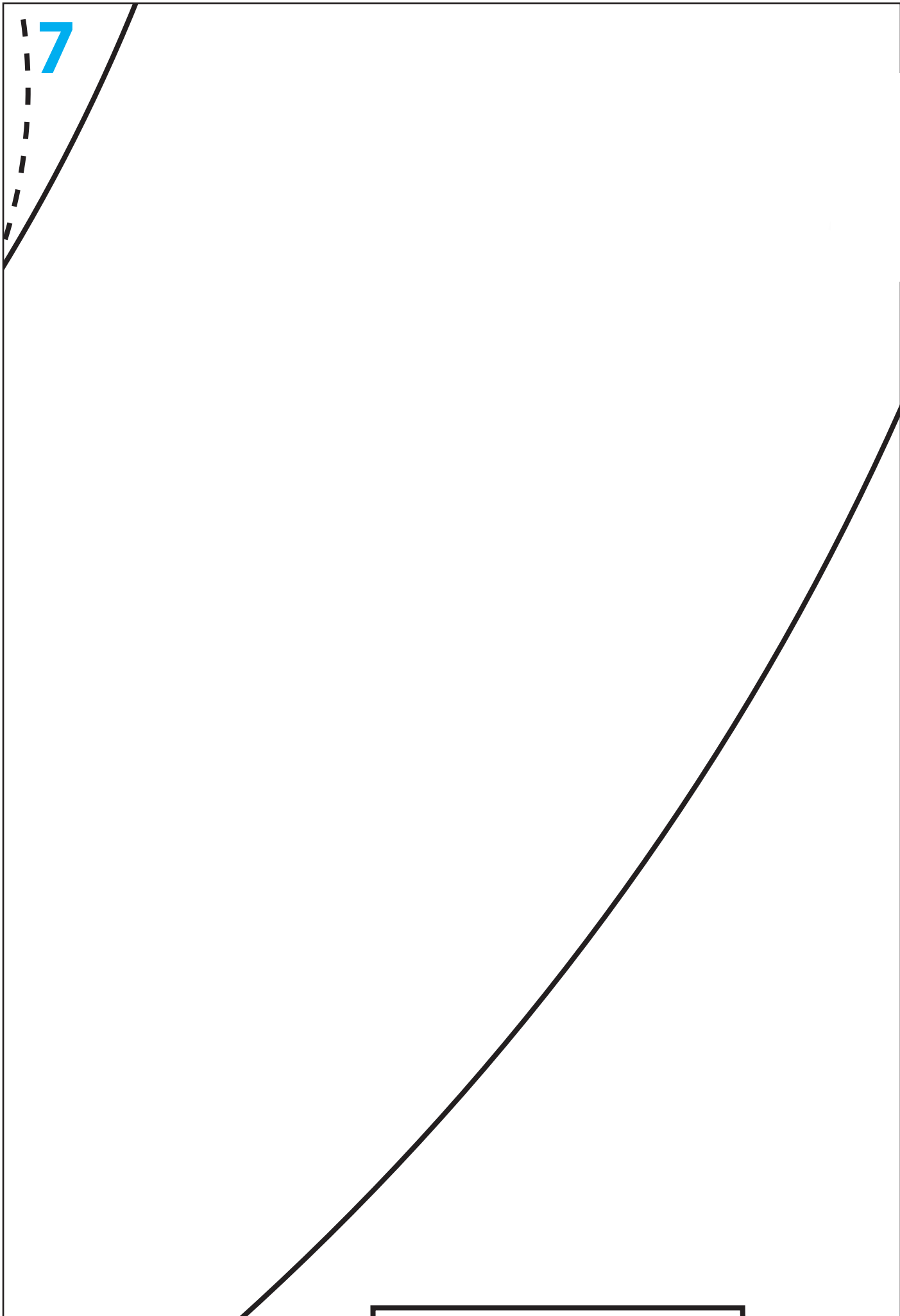


5

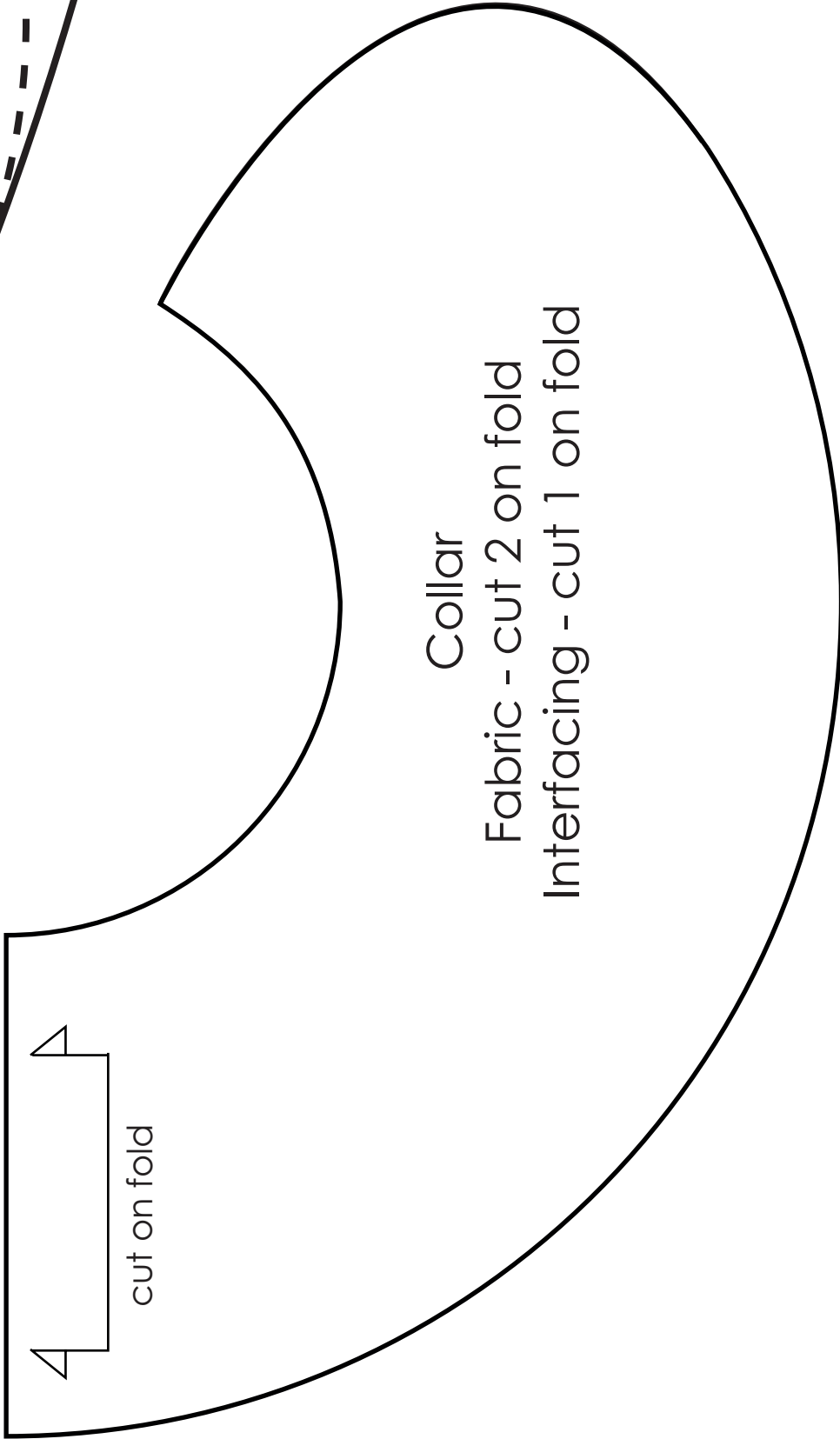


6





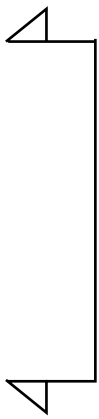




Collar

Fabric - cut 2 on fold

Interfacing - cut 1 on fold



cut on fold

9



10



11



cut on fold



Interfoc

12



cut on fold

acing, cut 1 on fold

