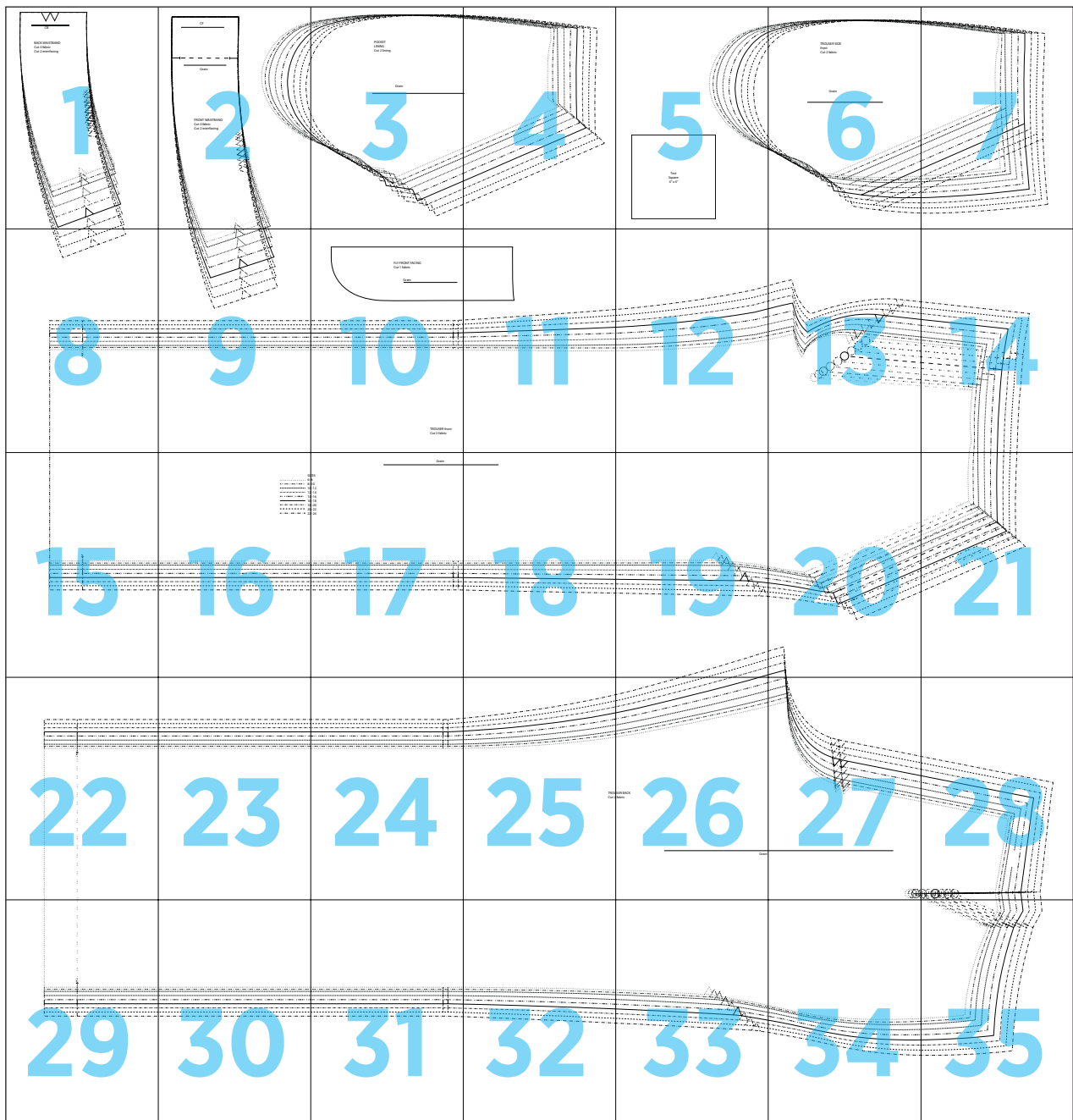
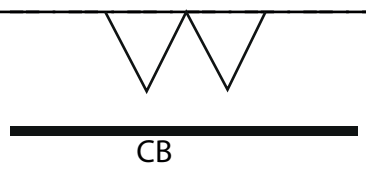


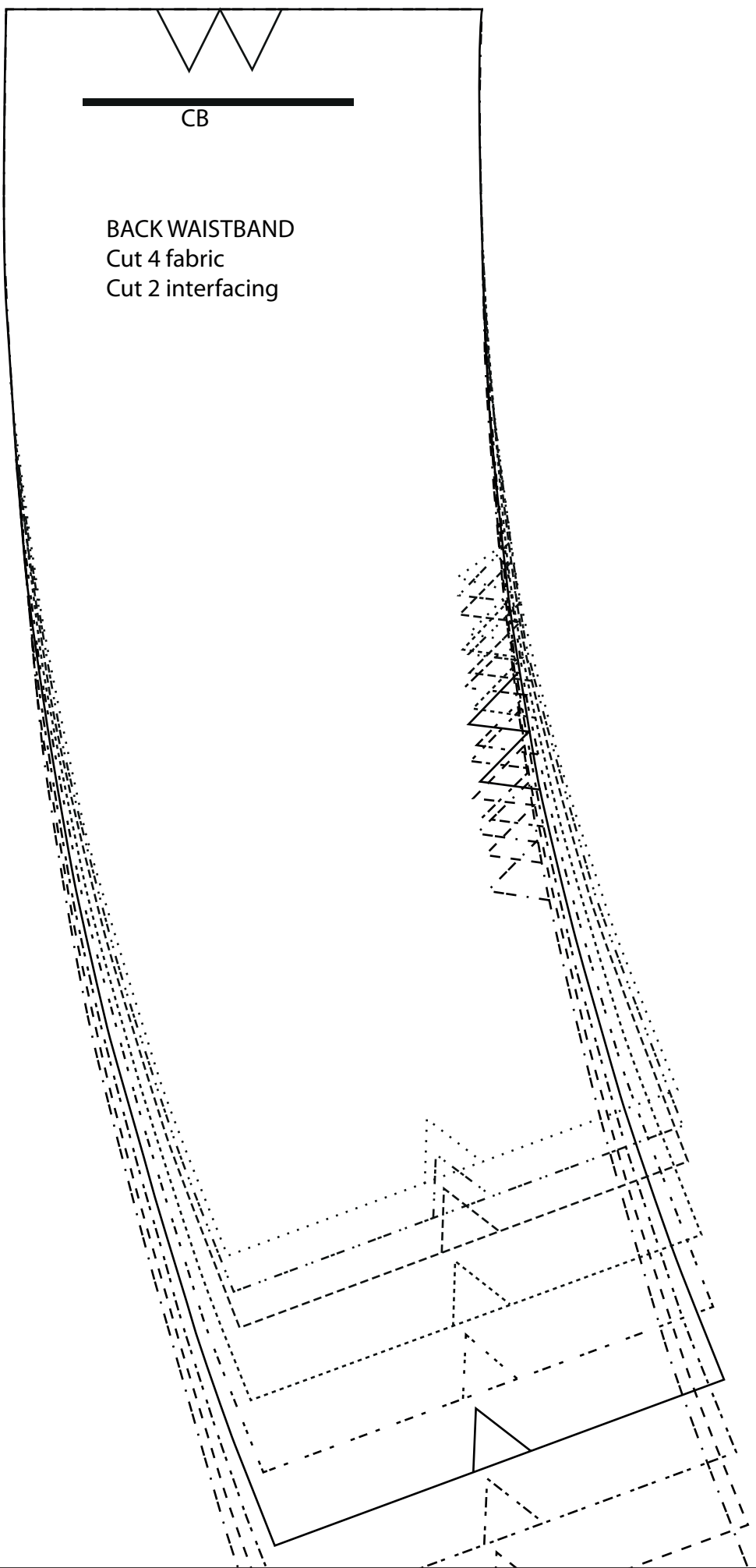
Trousers



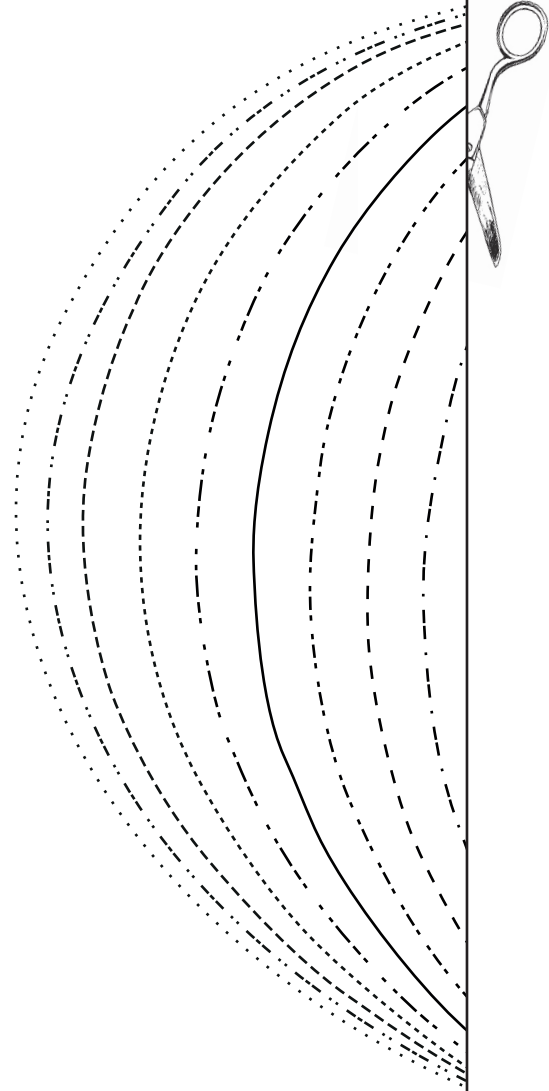
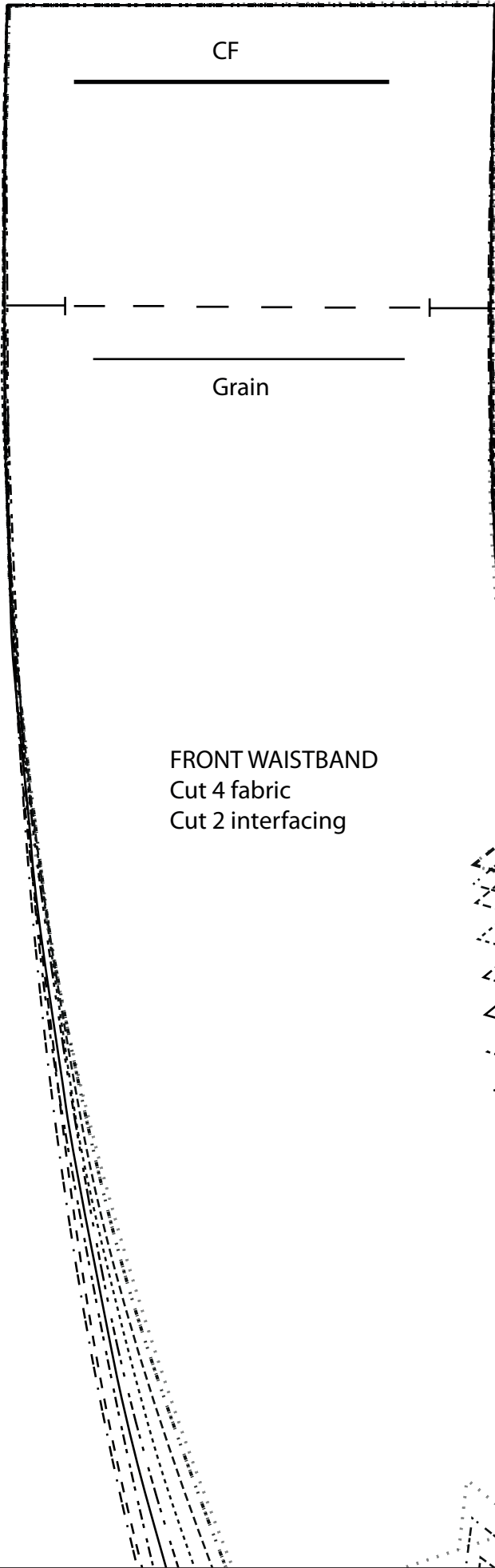
1



BACK WAISTBAND
Cut 4 fabric
Cut 2 interfacing



2



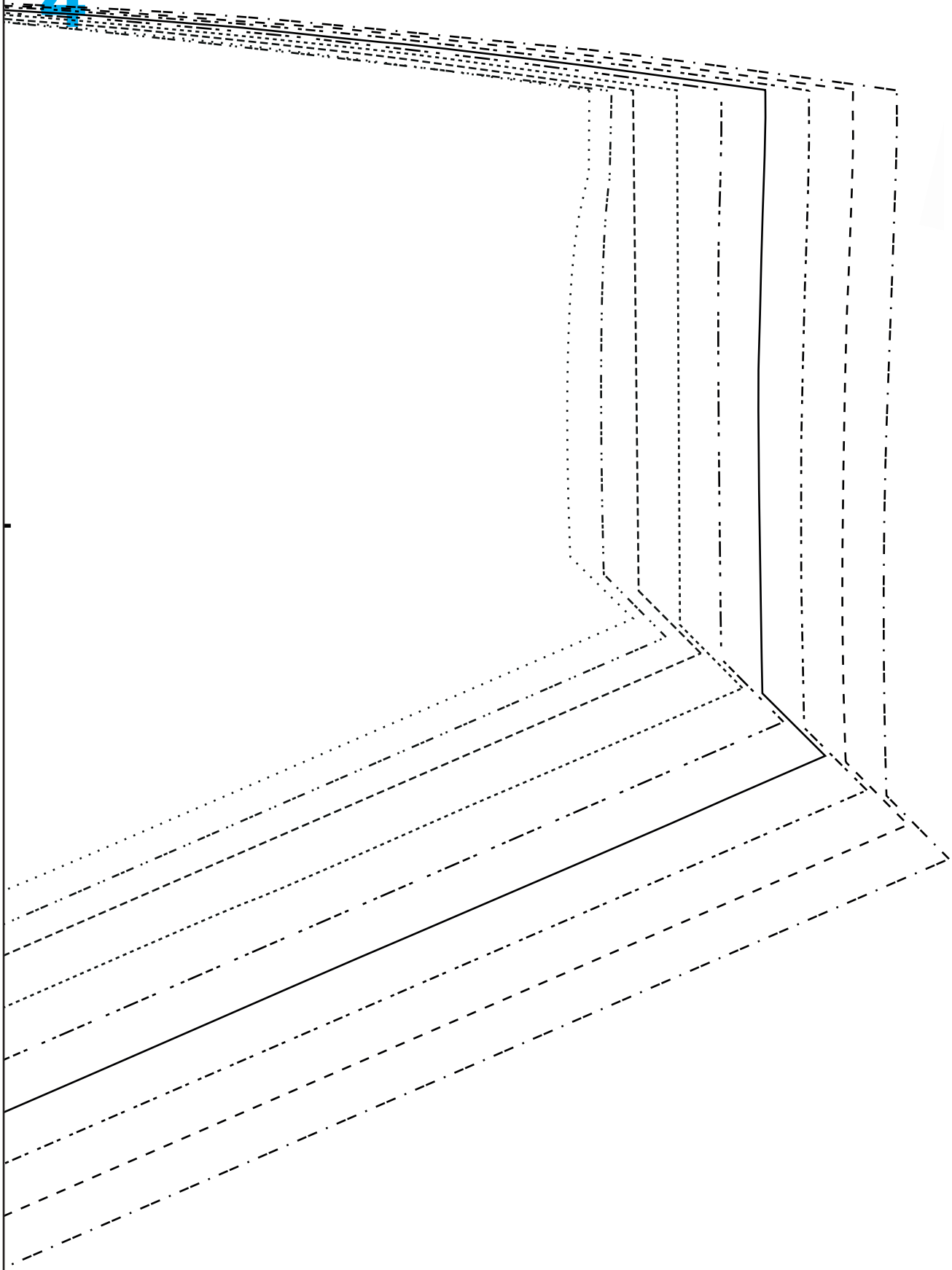
3

POCKET
LINING
Cut 2 lining

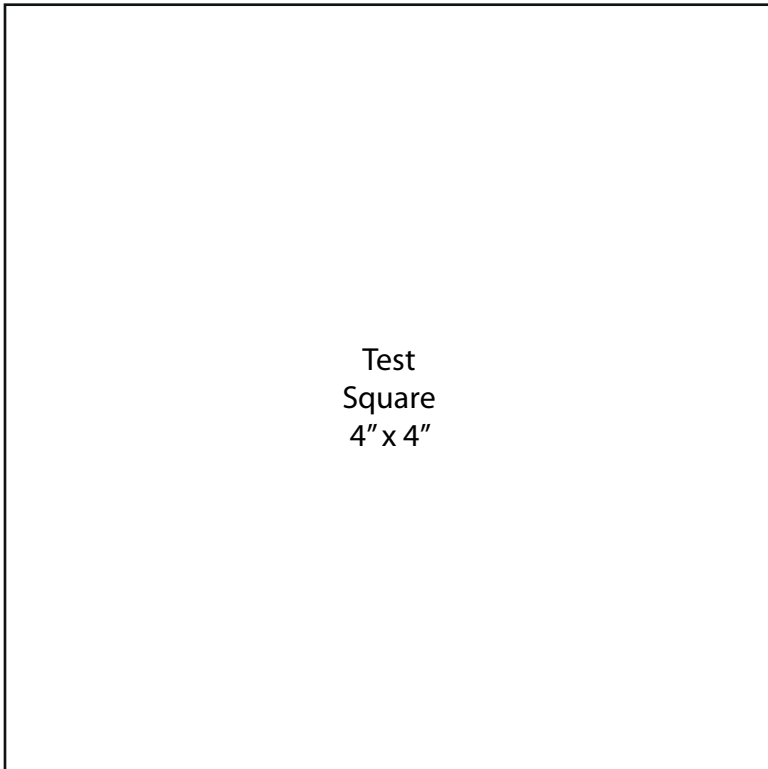
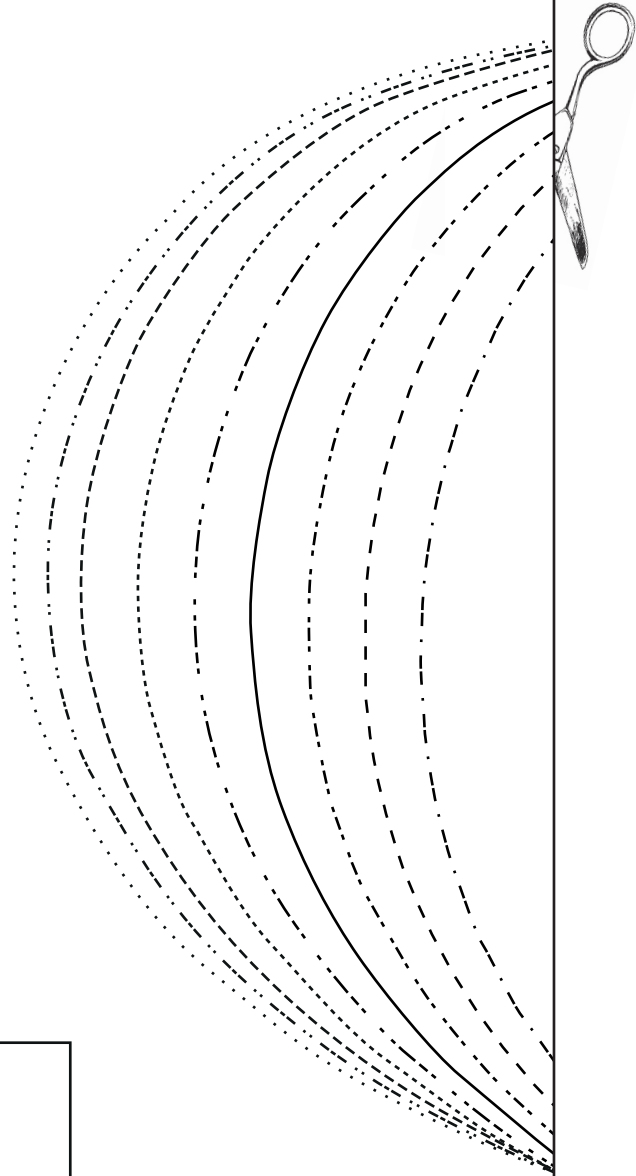
Grain



4



5



Test
Square
4" x 4"

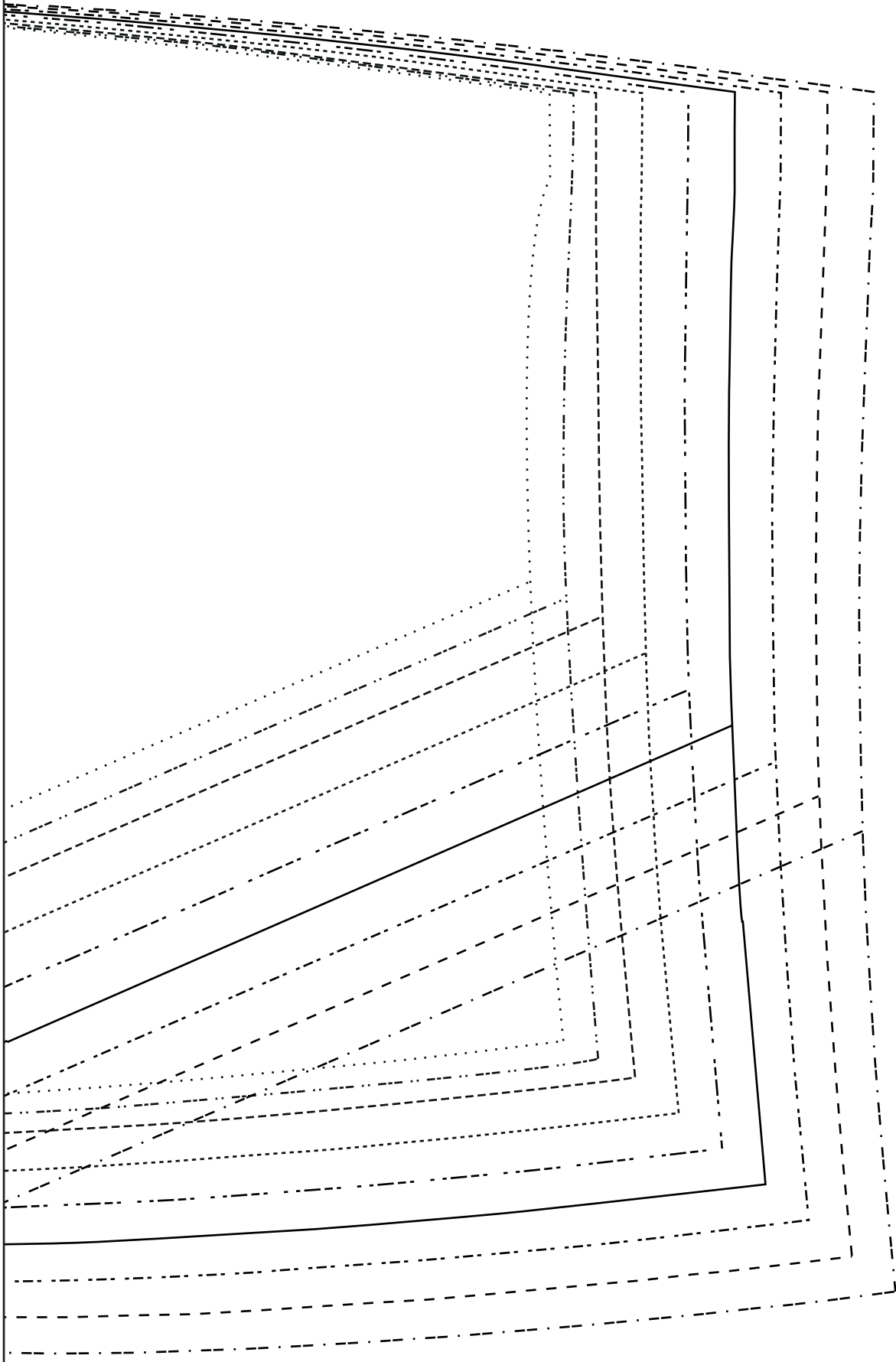
6

TROUSER SIDE
front
Cut 2 fabric

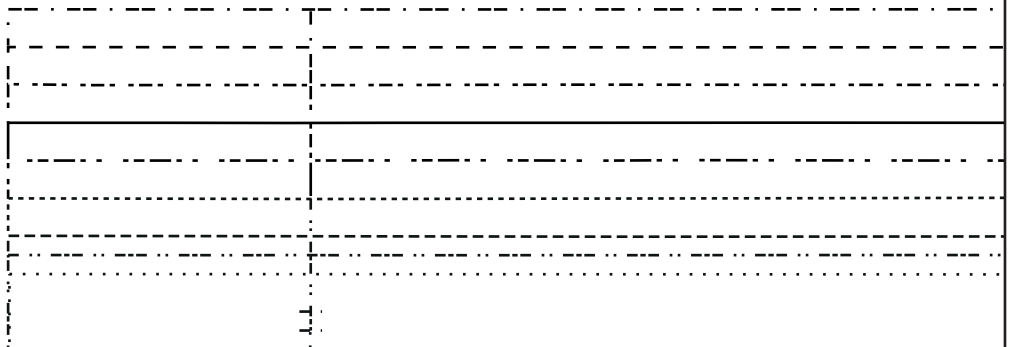
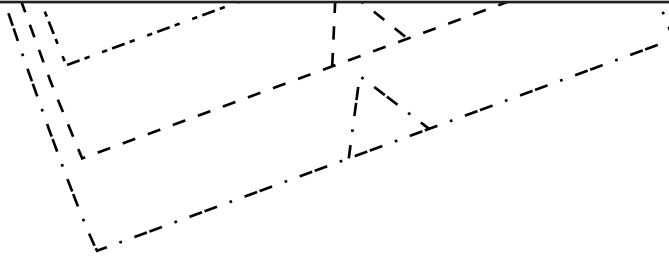
Grain



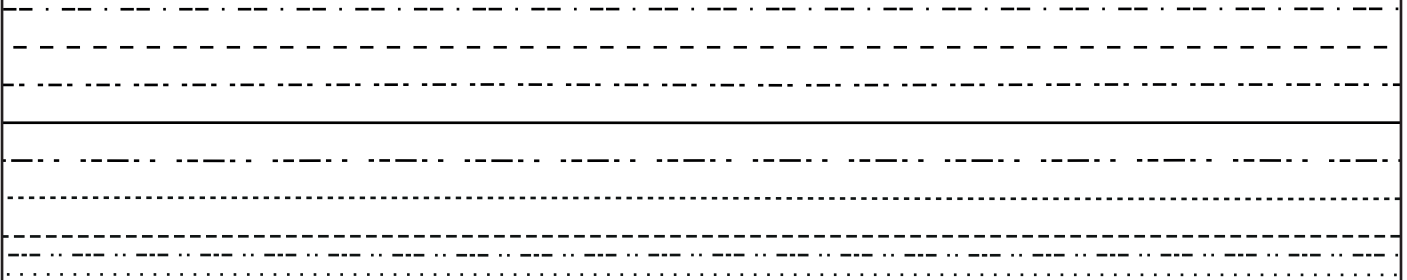
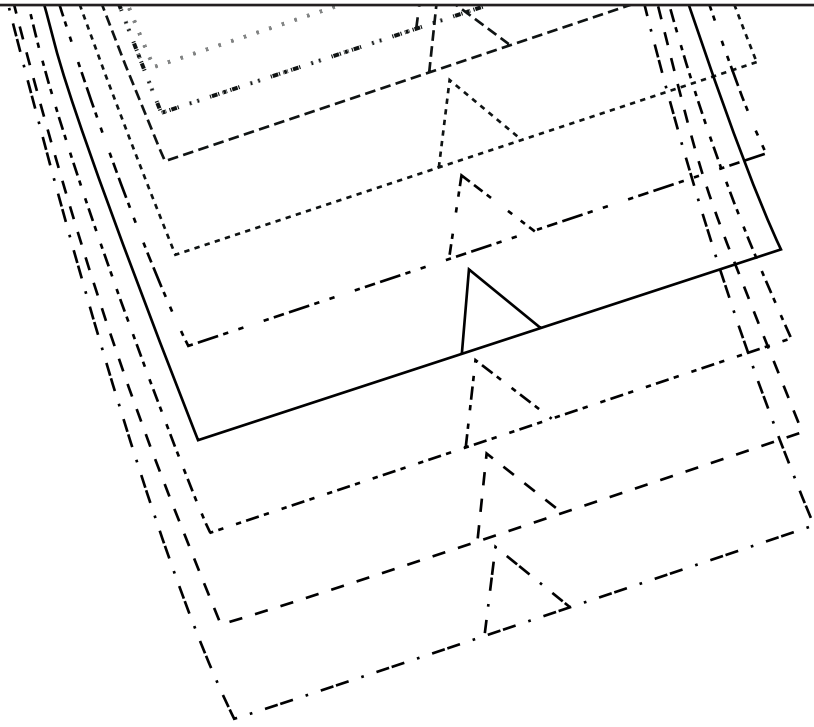
7



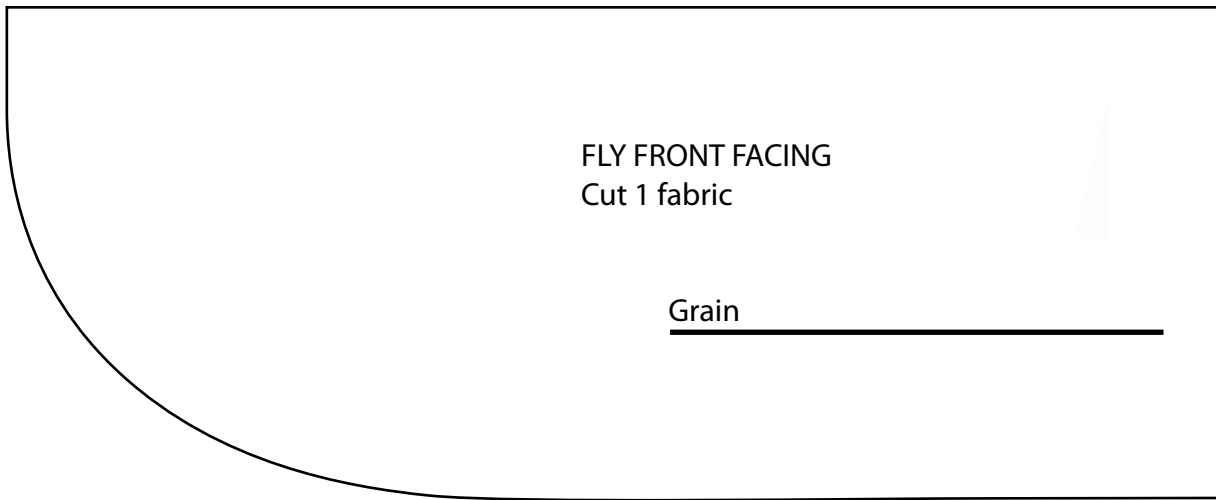
8



9

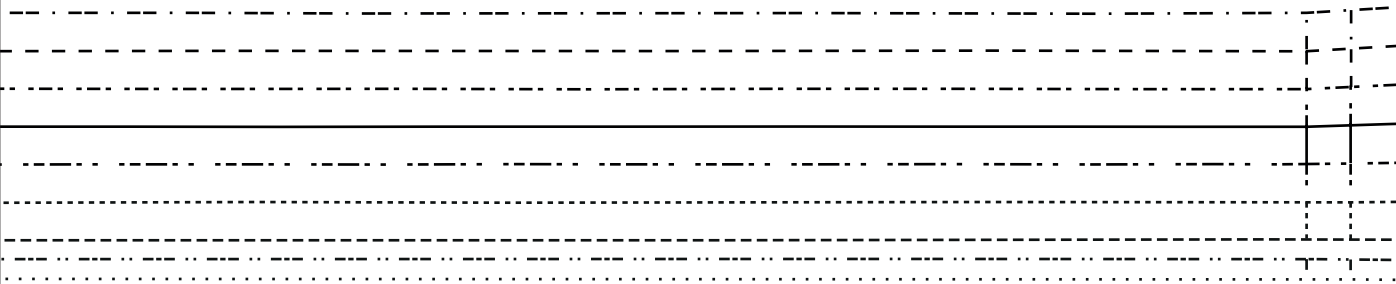


10

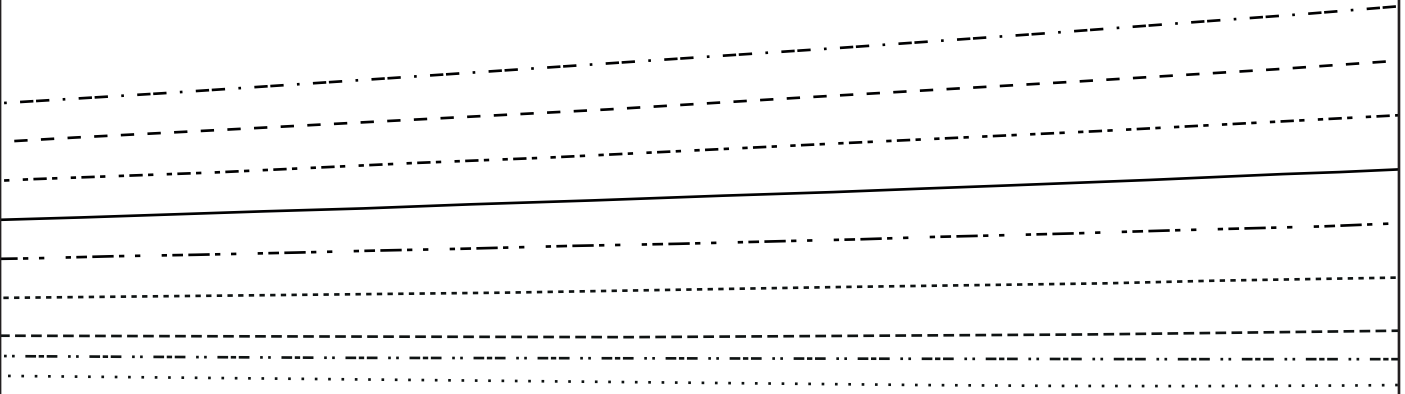
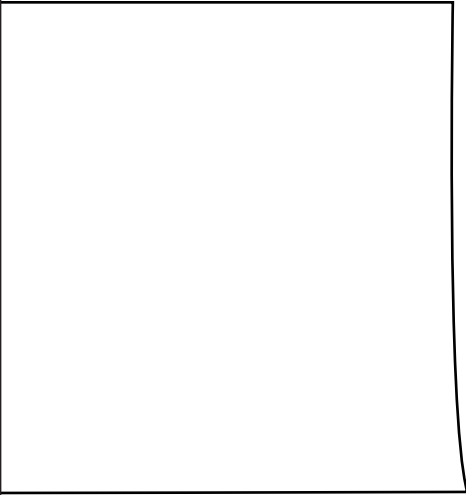


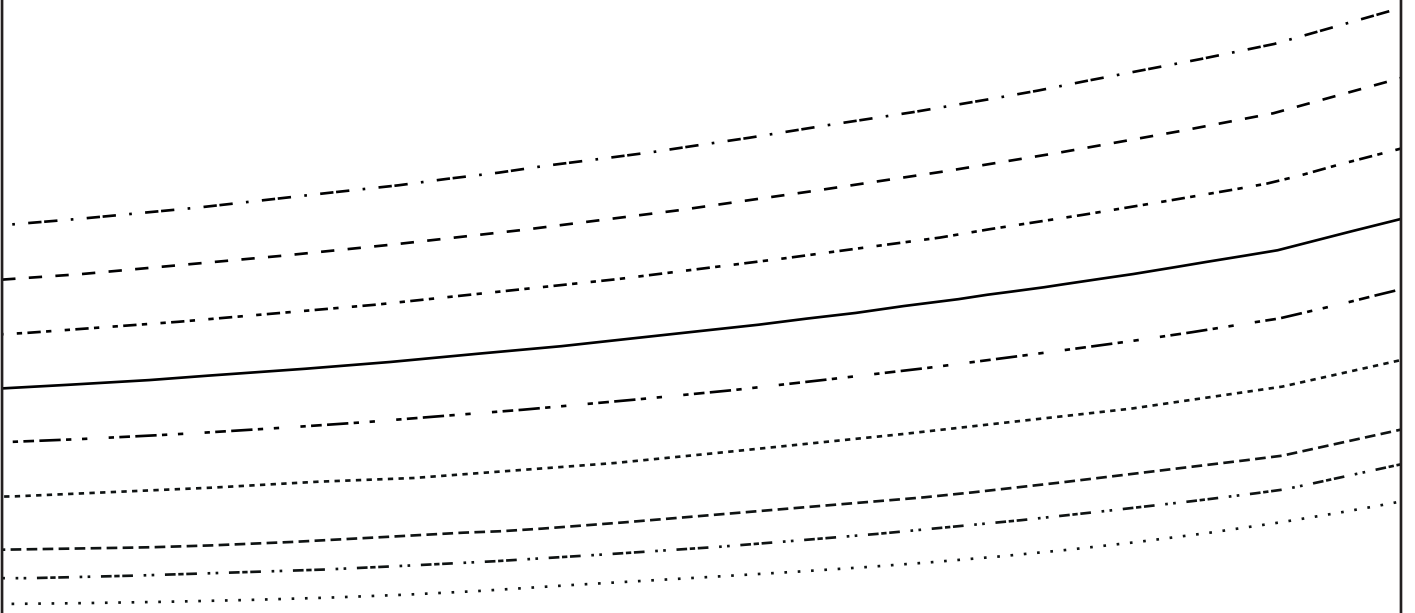
FLY FRONT FACING
Cut 1 fabric

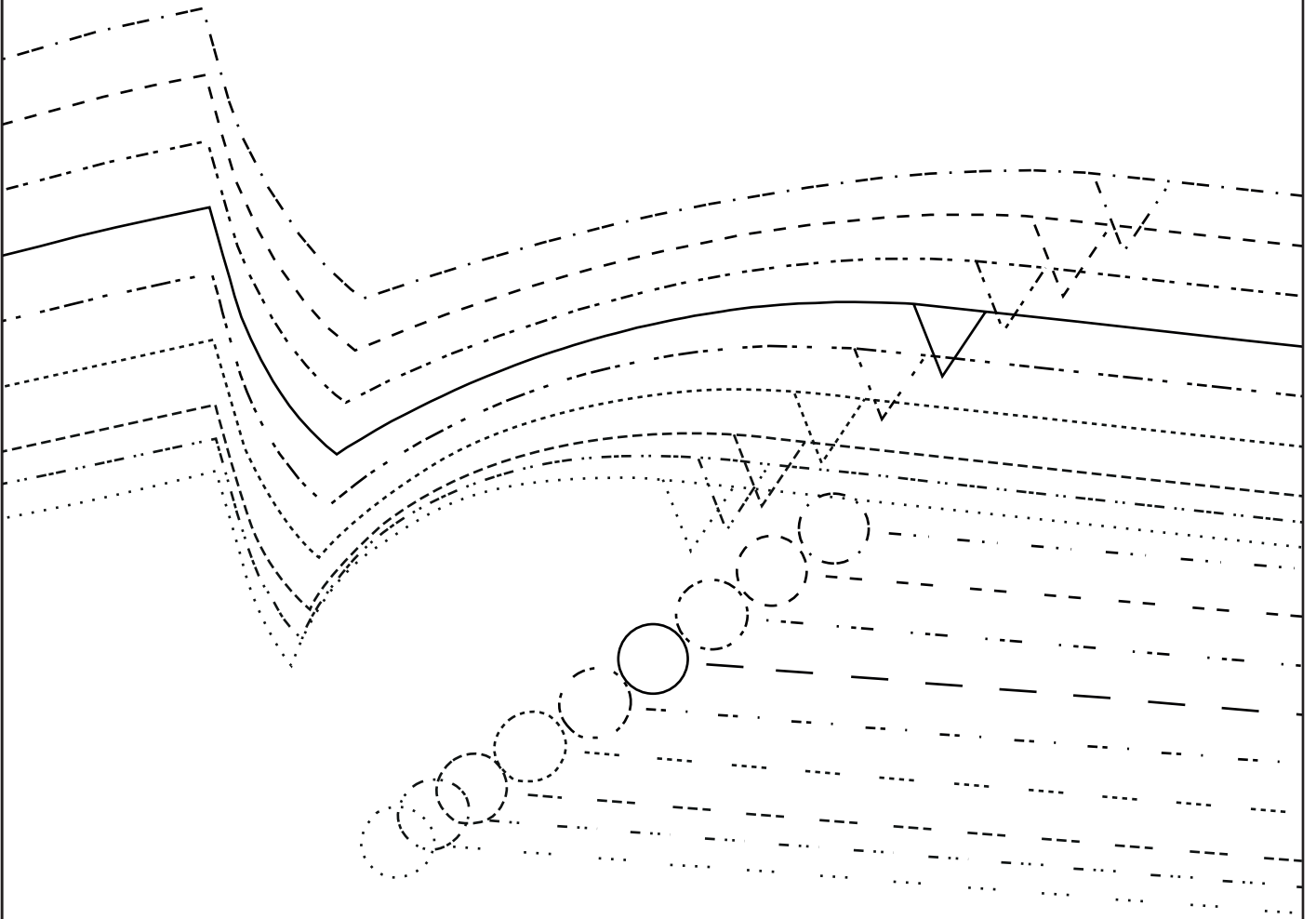
Grain

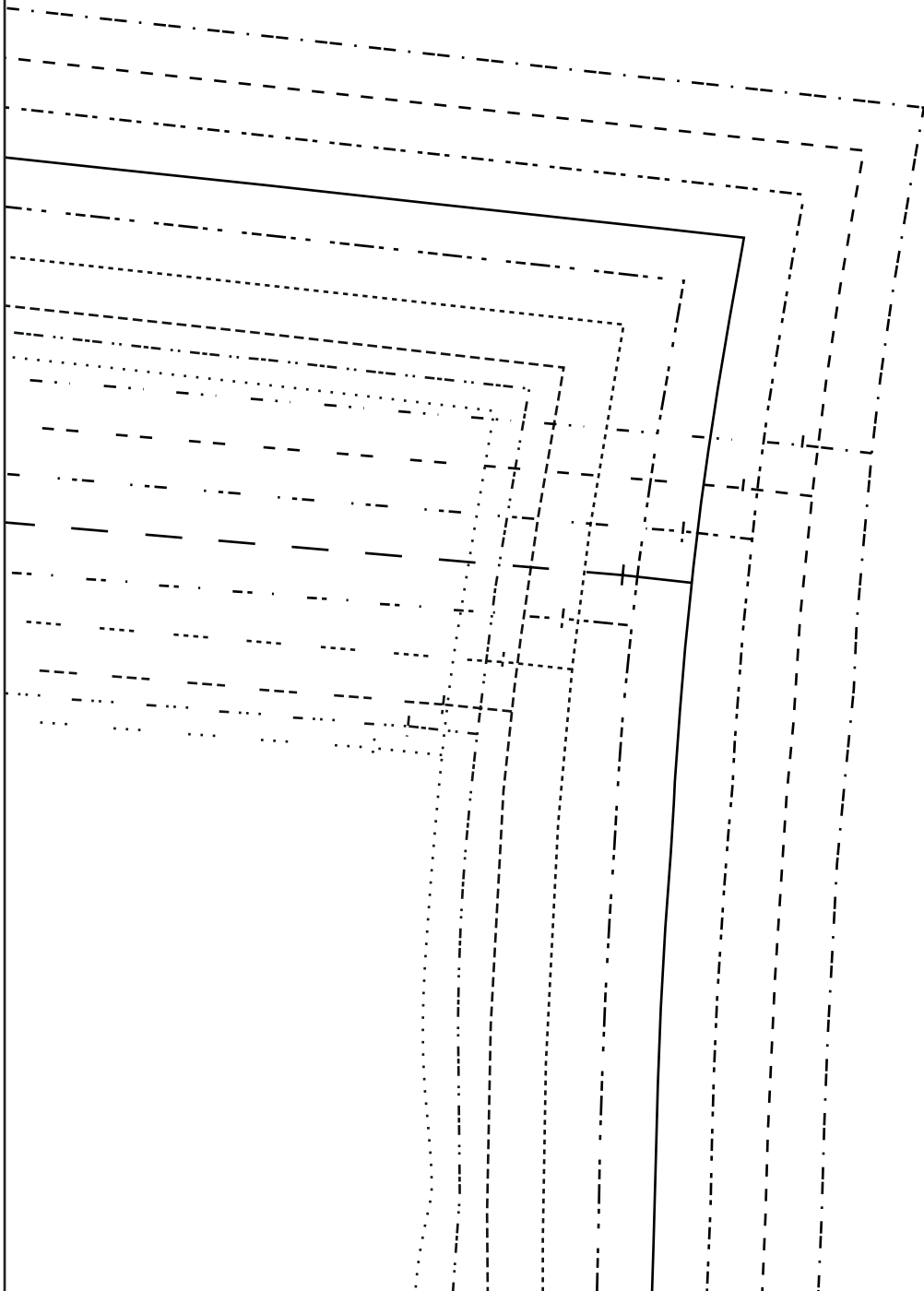


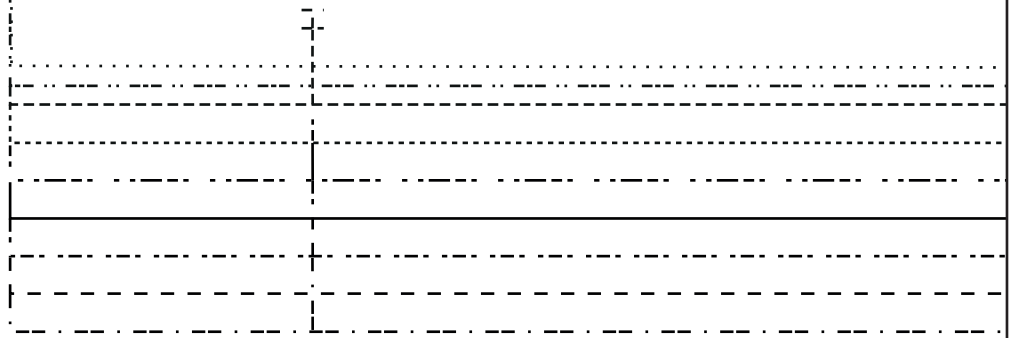
TROUSER front
Cut 2 fabric



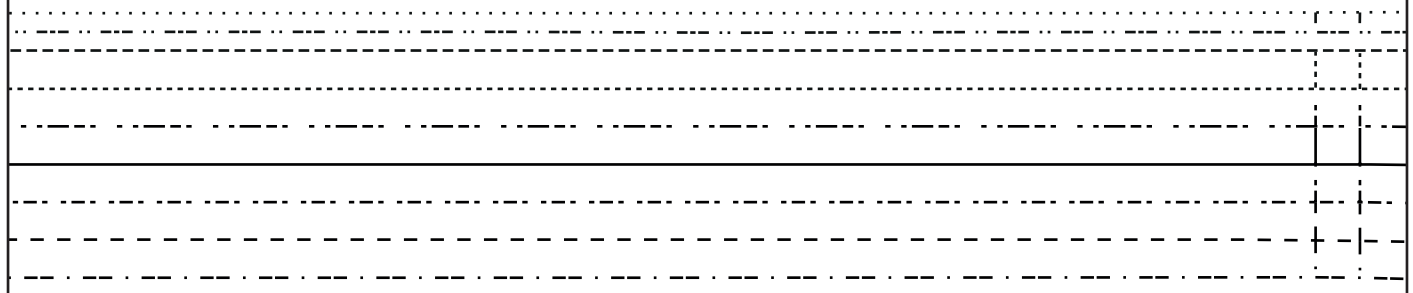


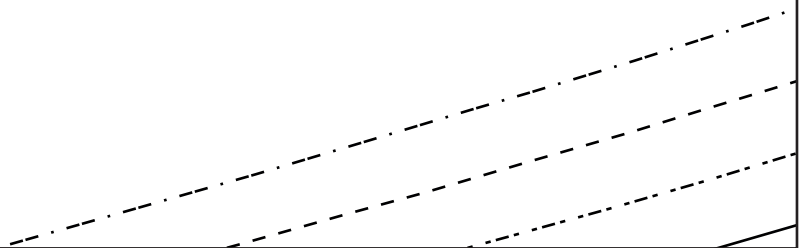
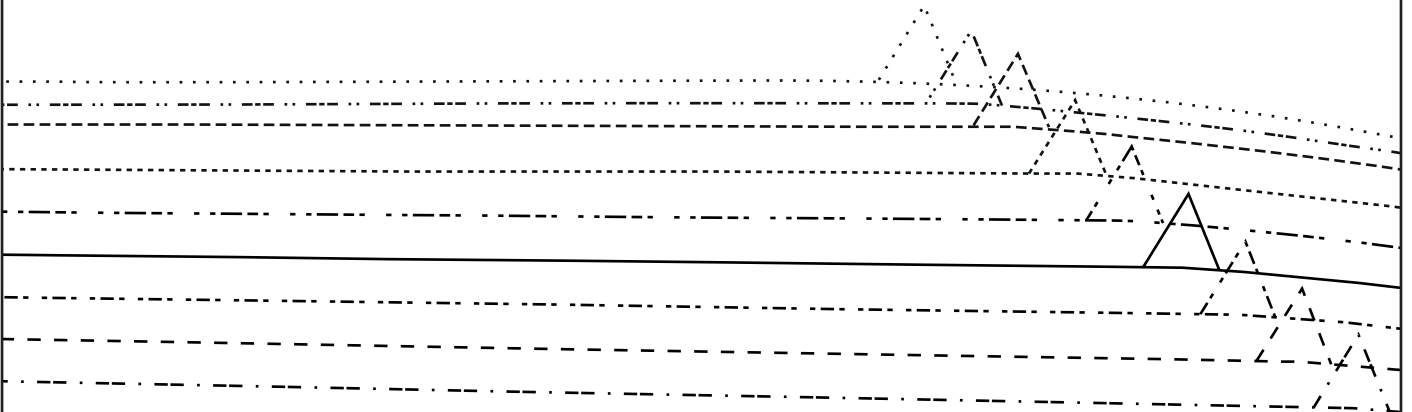


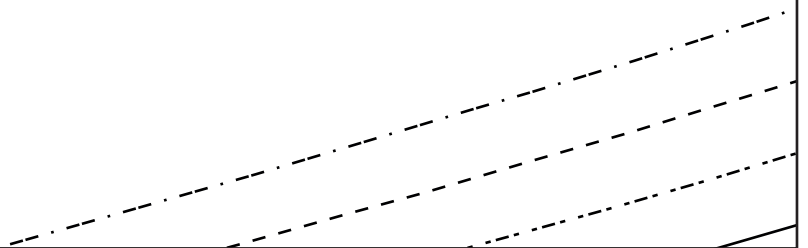
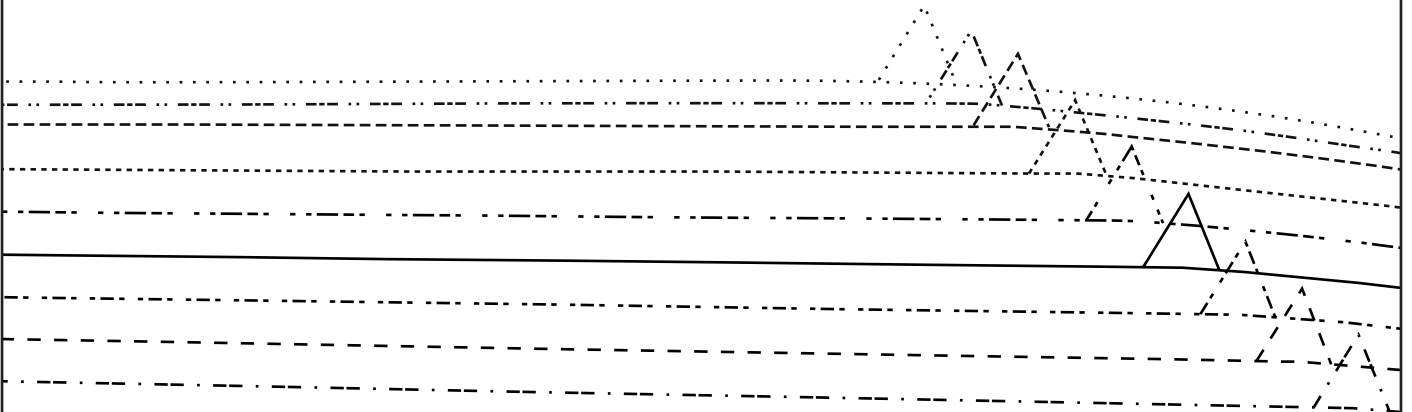


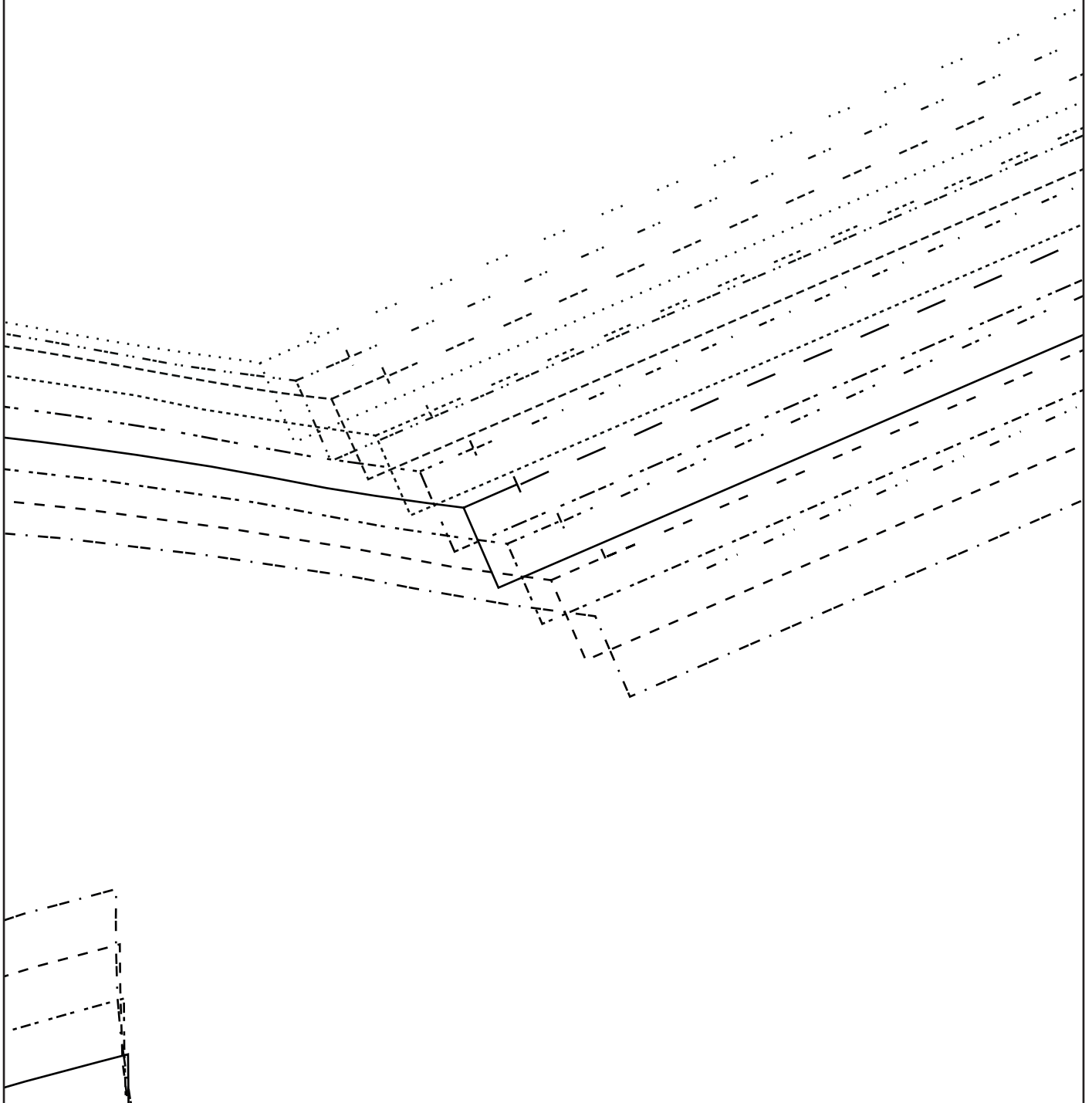


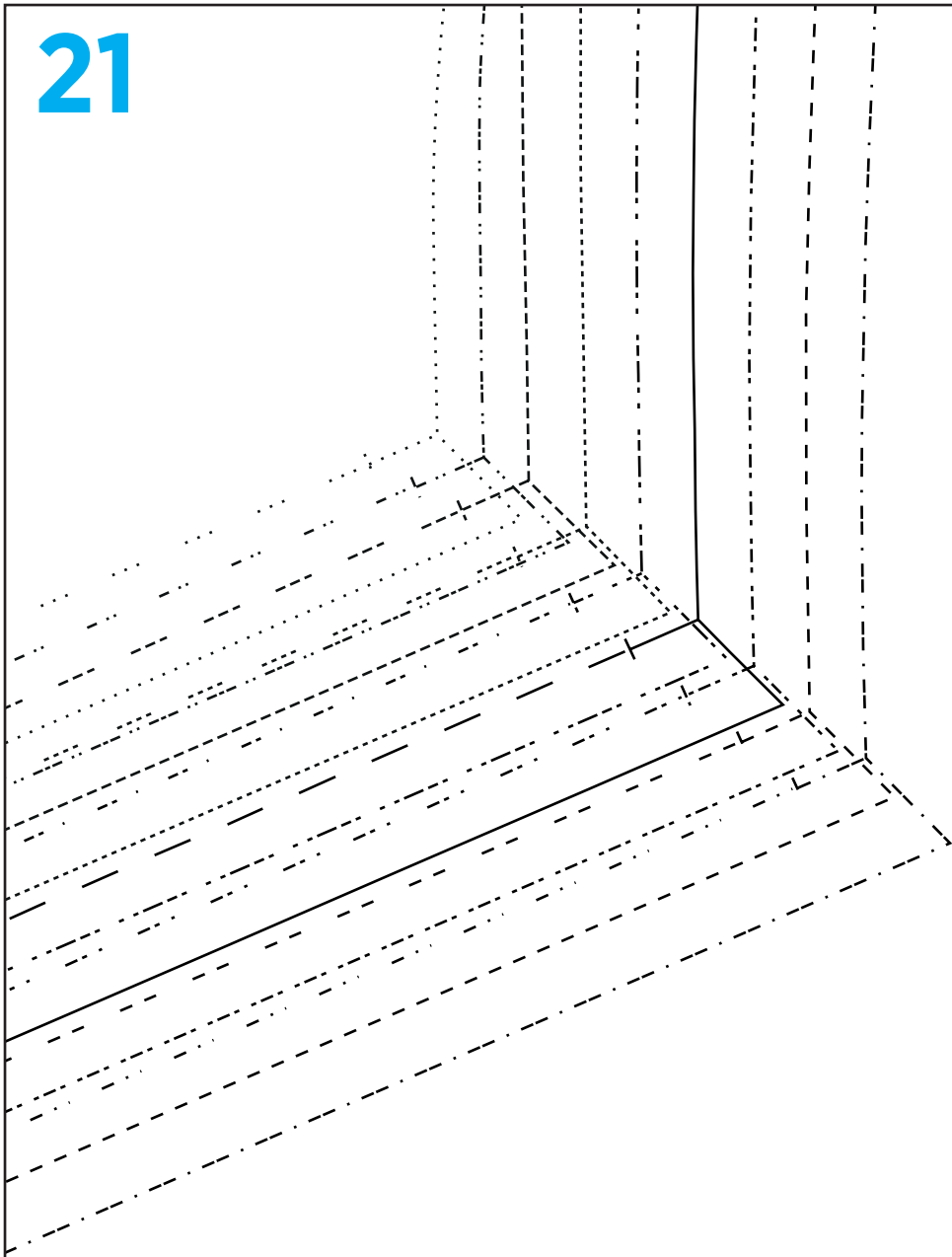
ZES
8
10
-12
-14
-16
-18
-20
-22
-24

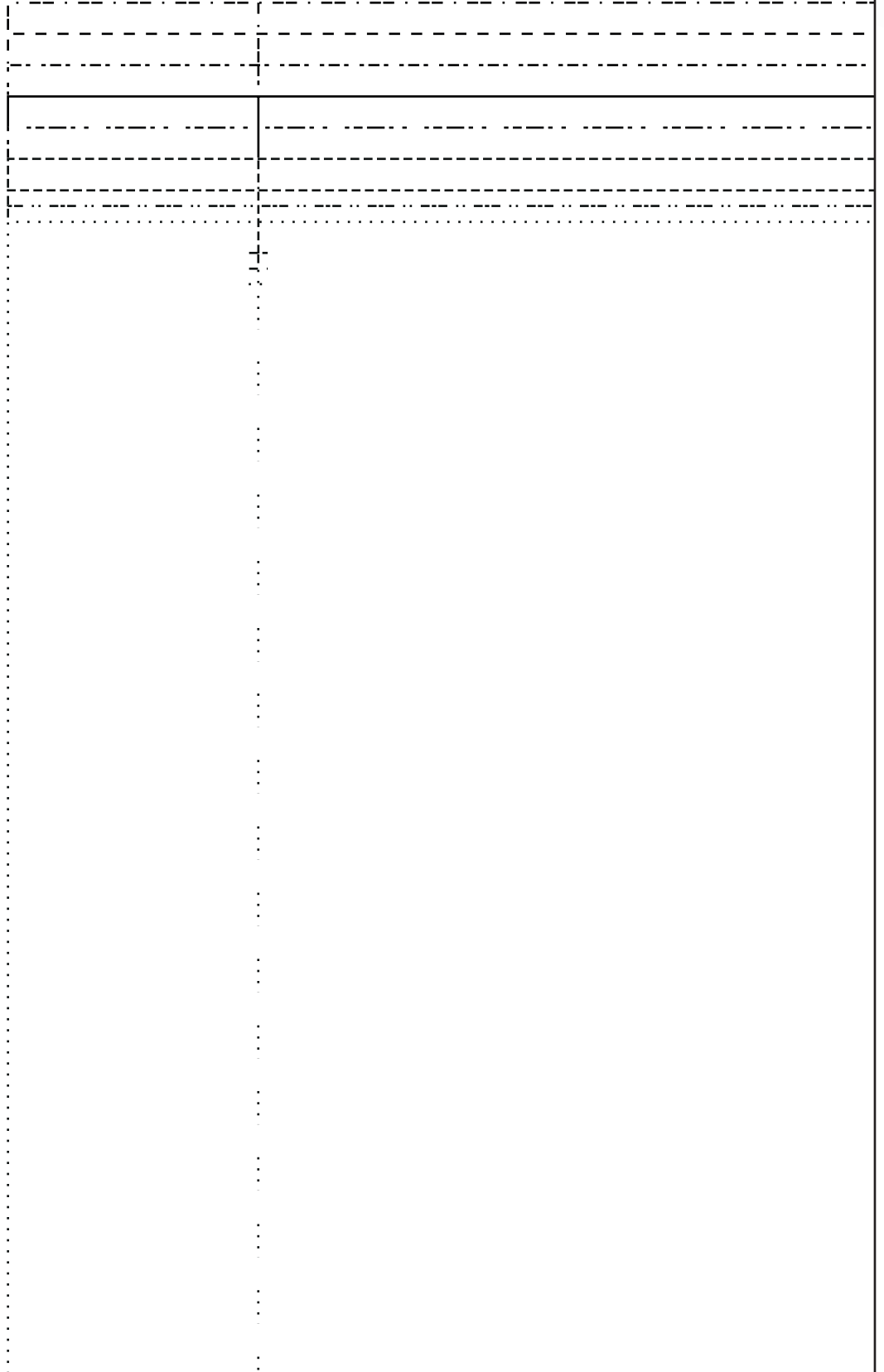






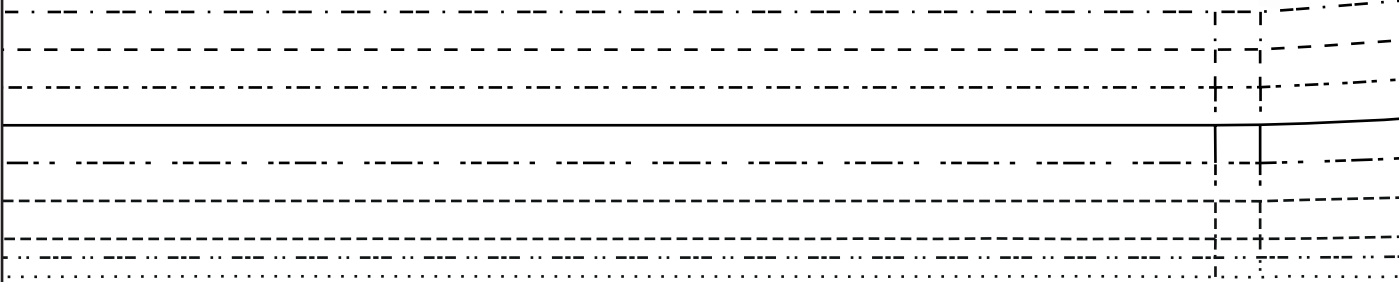




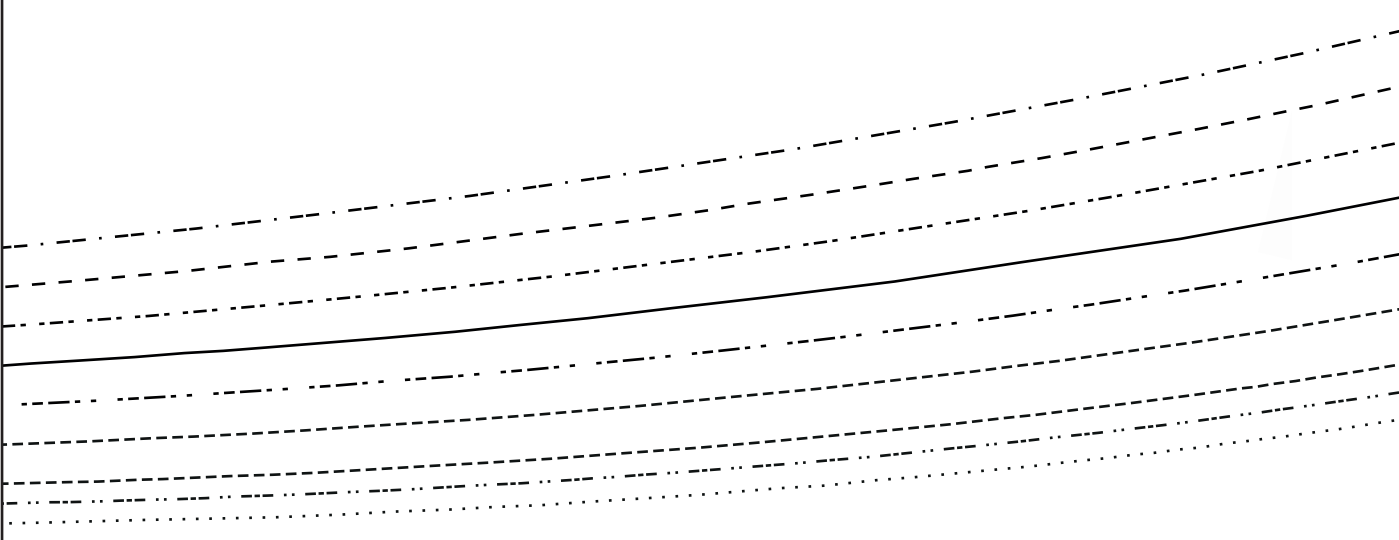




Handwriting practice lines consisting of a solid top line, a dashed middle line, and a dotted bottom line. This set of lines is repeated twice, once in the upper section and once in the lower section of the page.

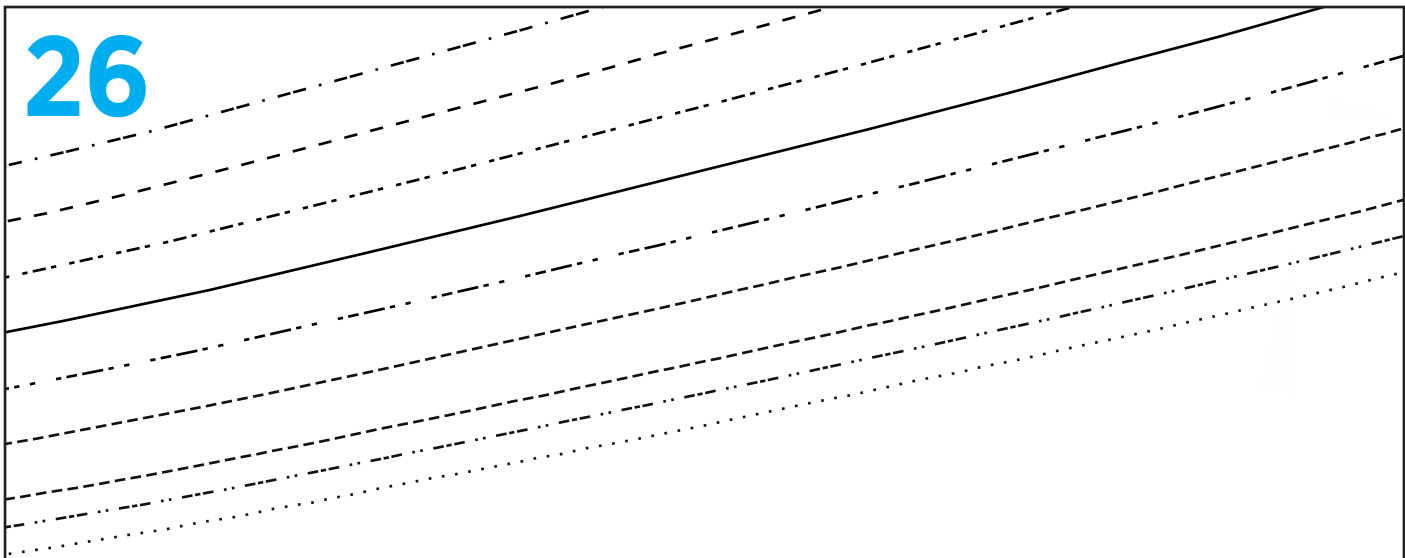


25



TROU
Cut 2

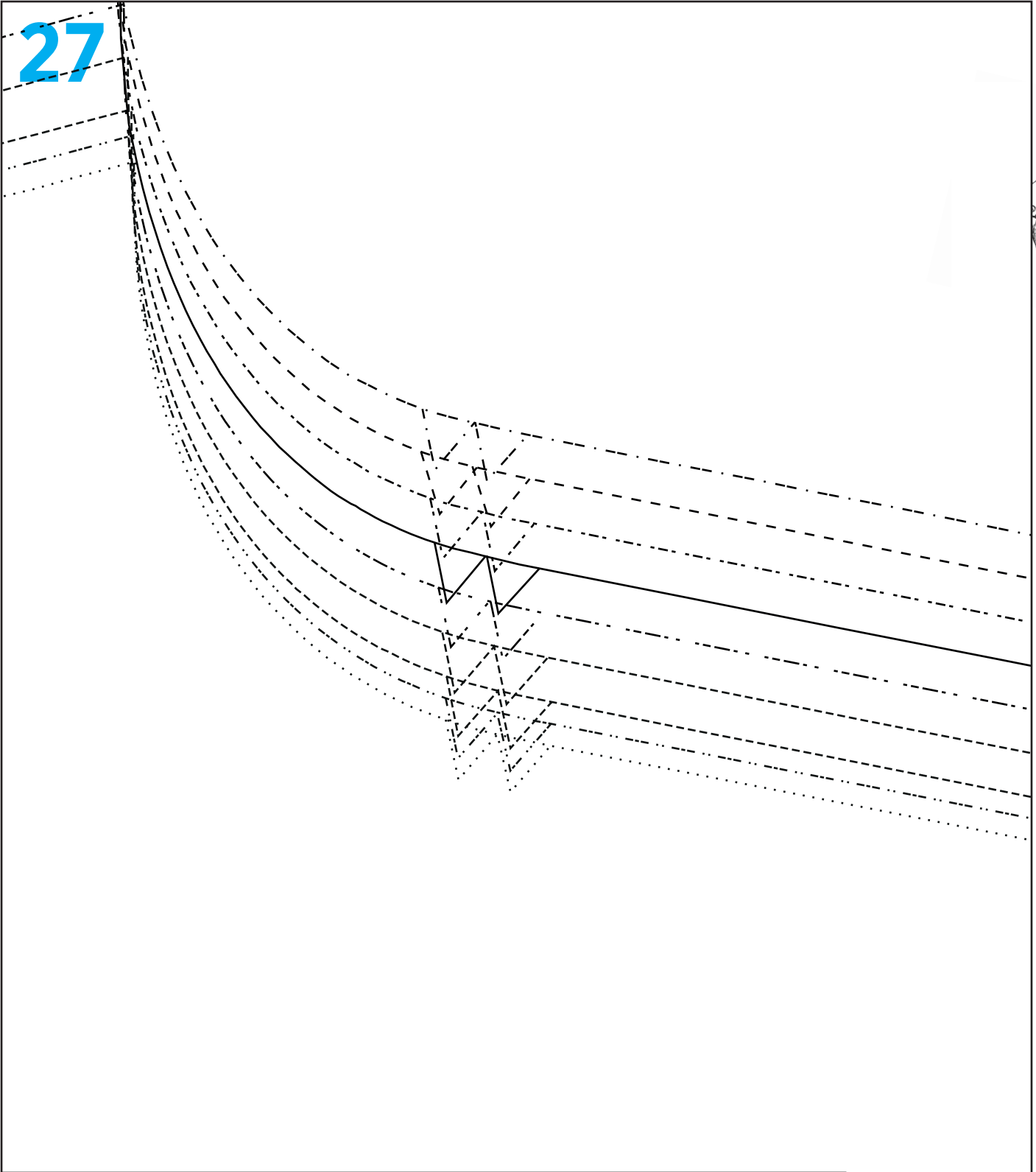
26

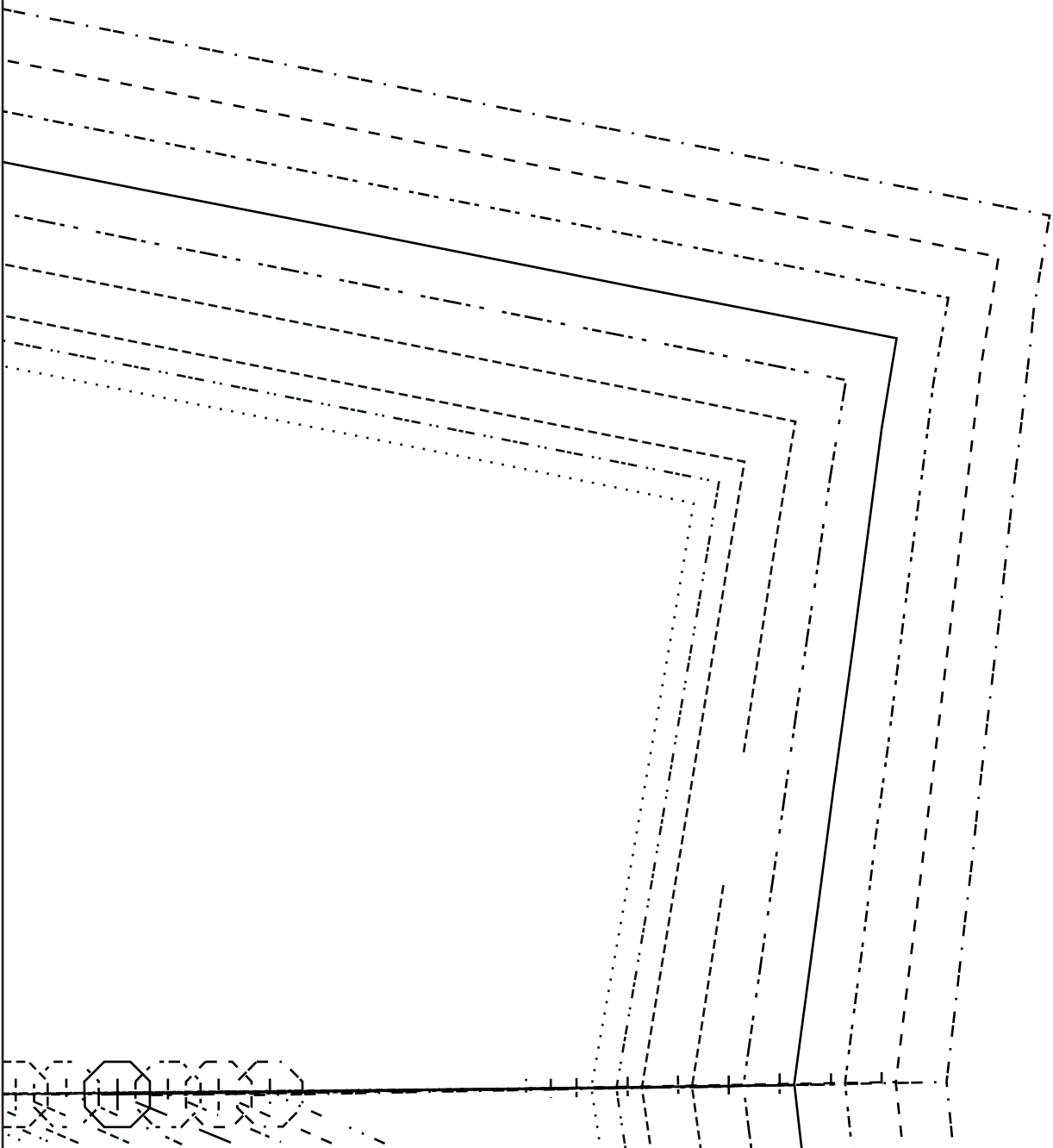


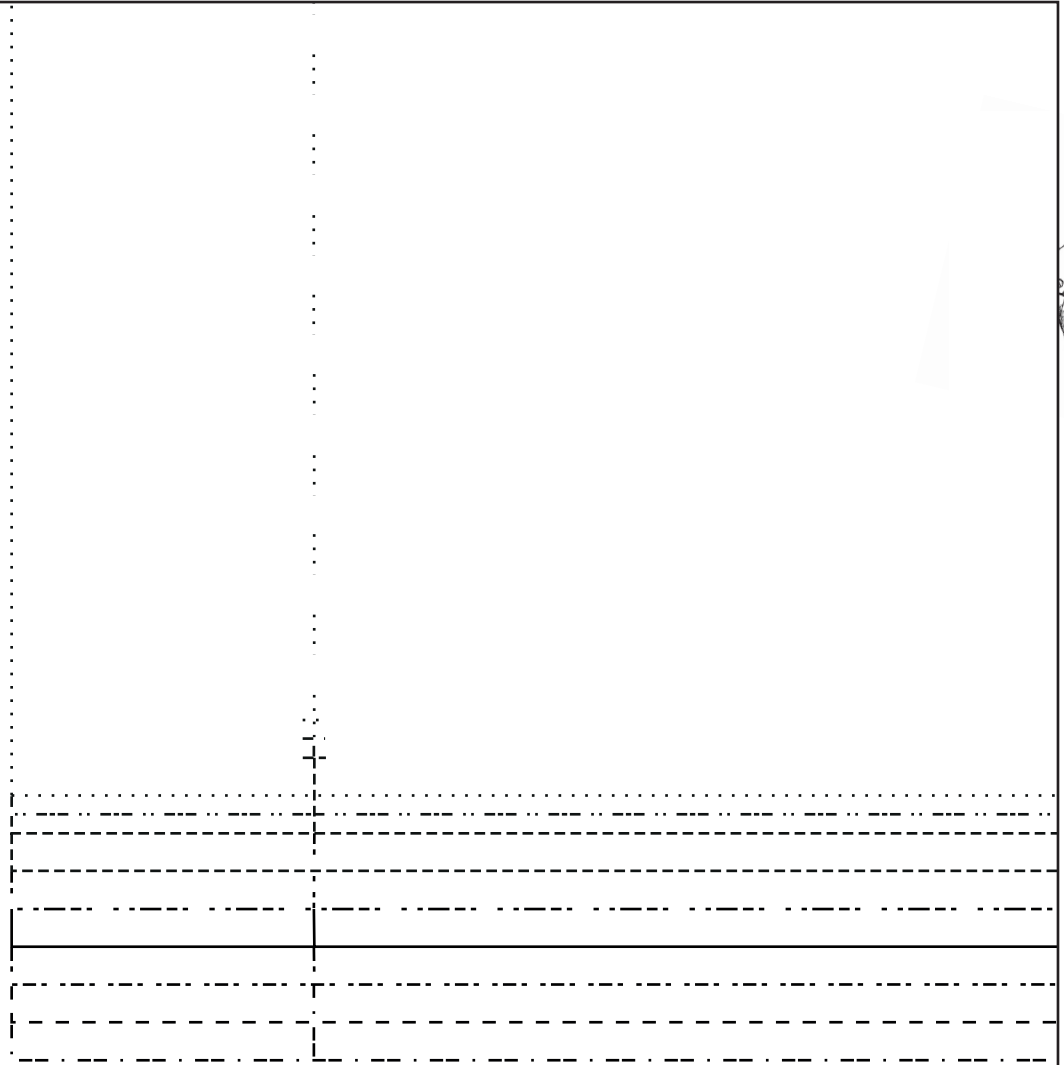
USER BACK
fabric

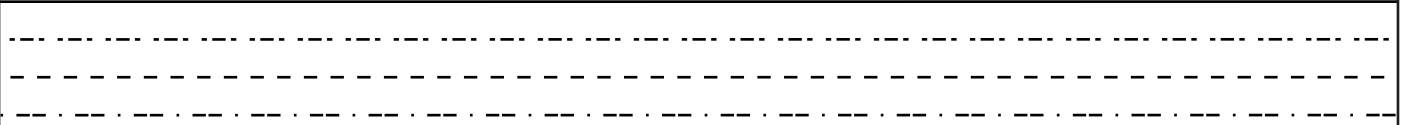
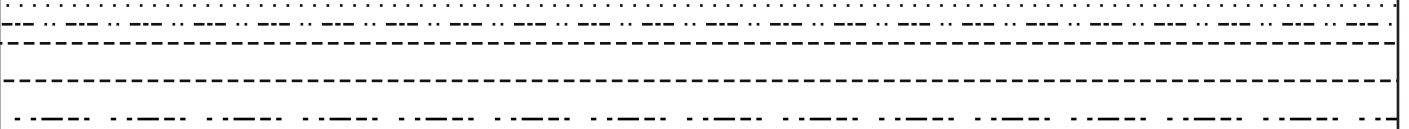
Grain

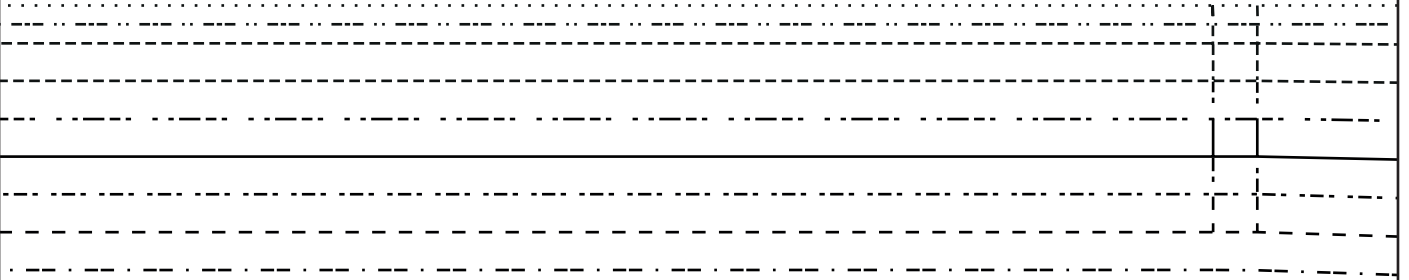
27

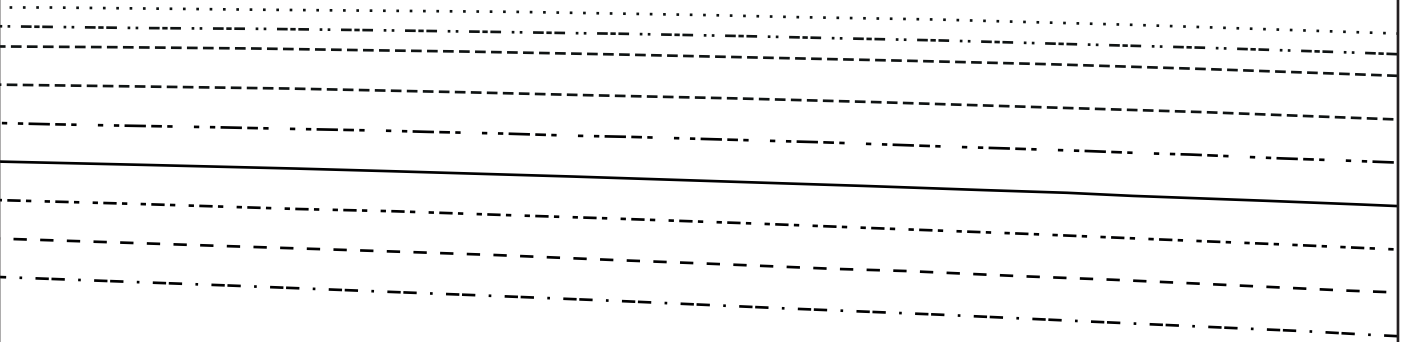


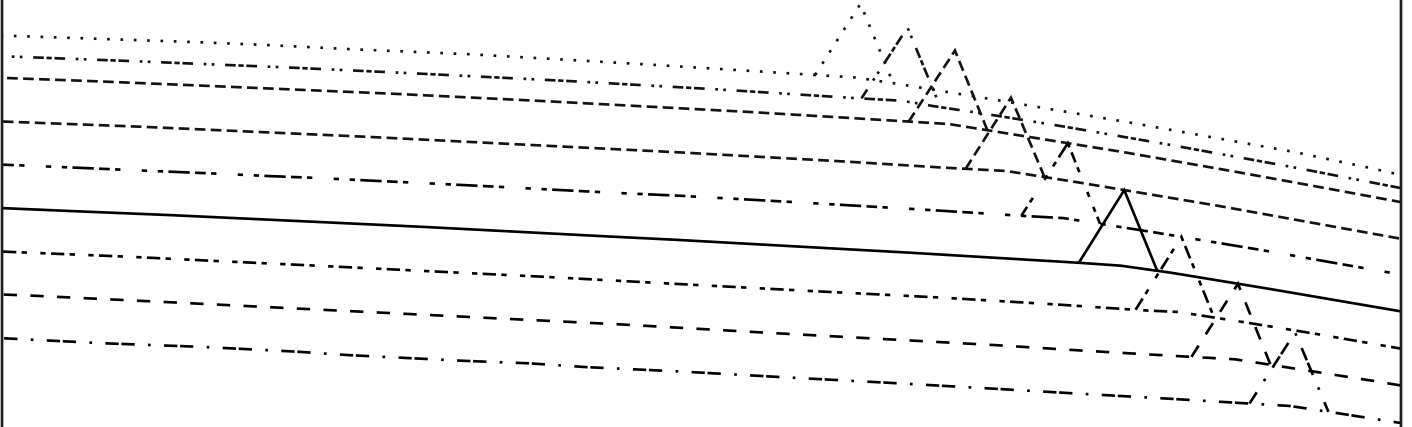


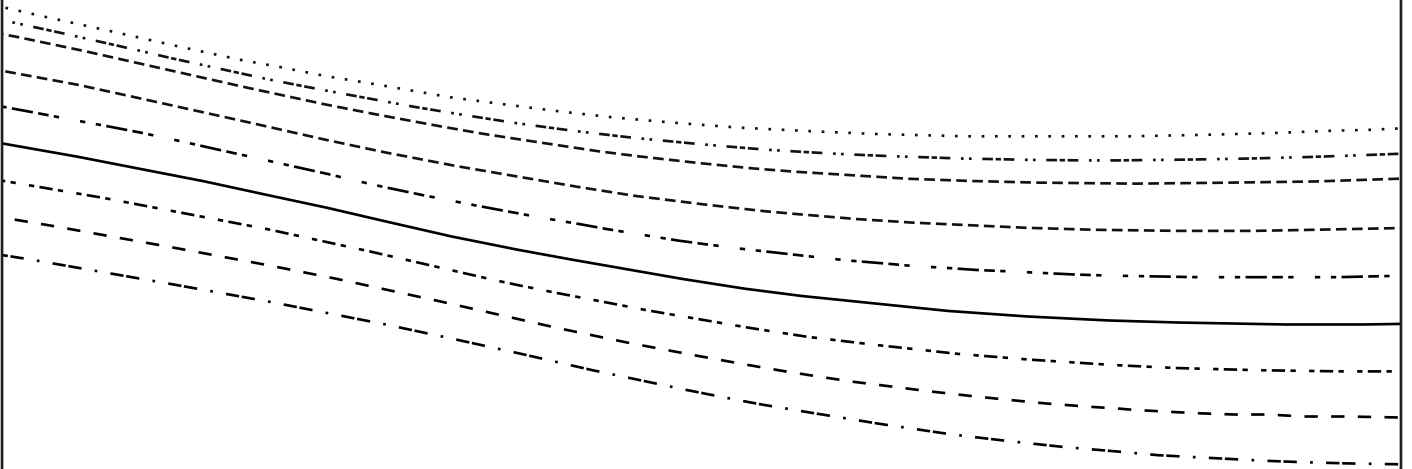












35

