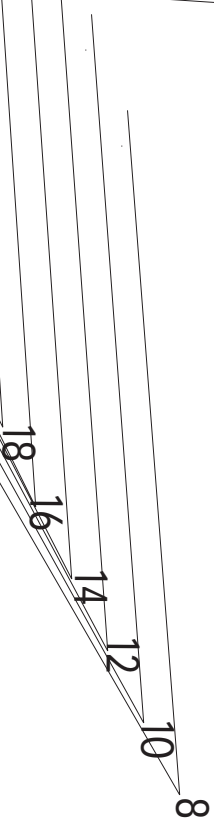
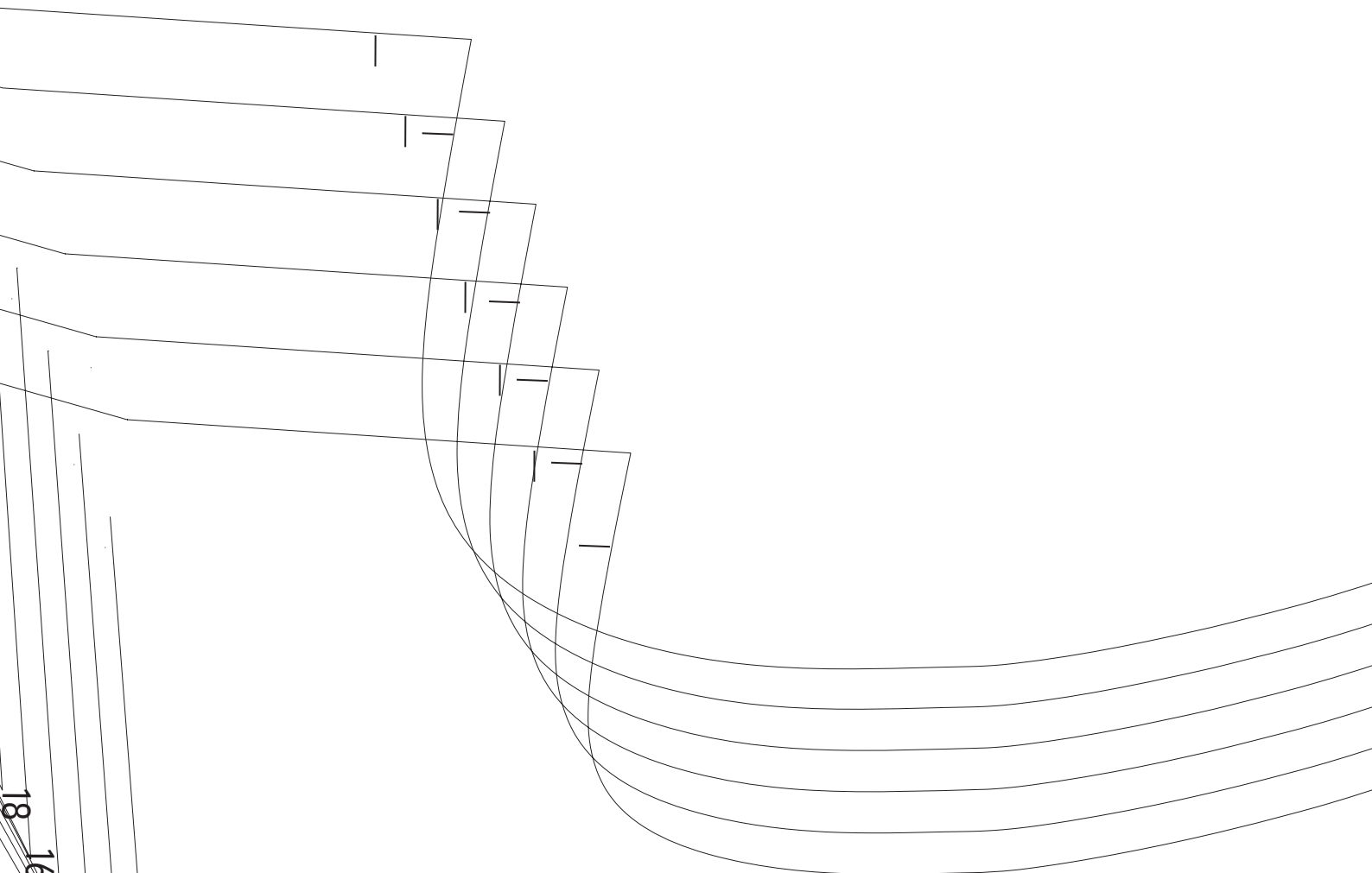


Simple
Seam

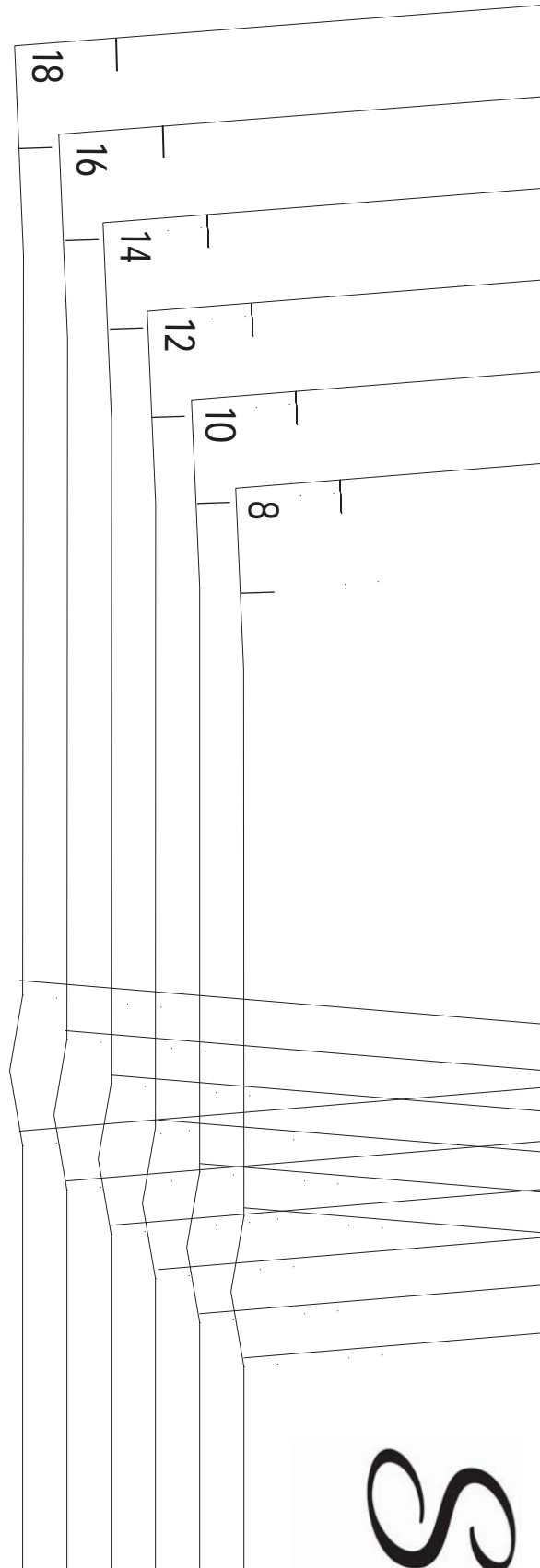
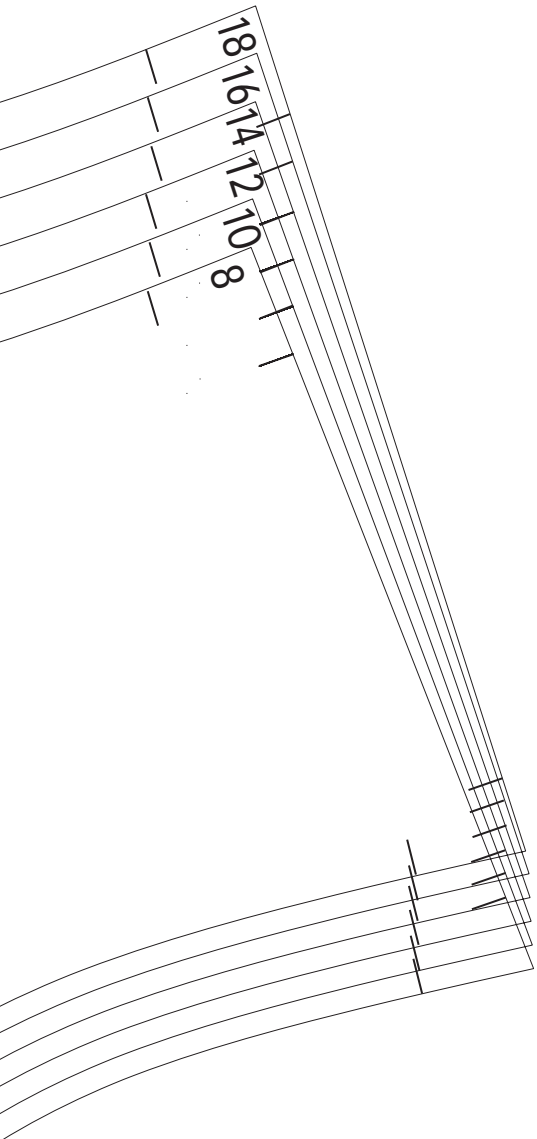
Take a 1cm seam

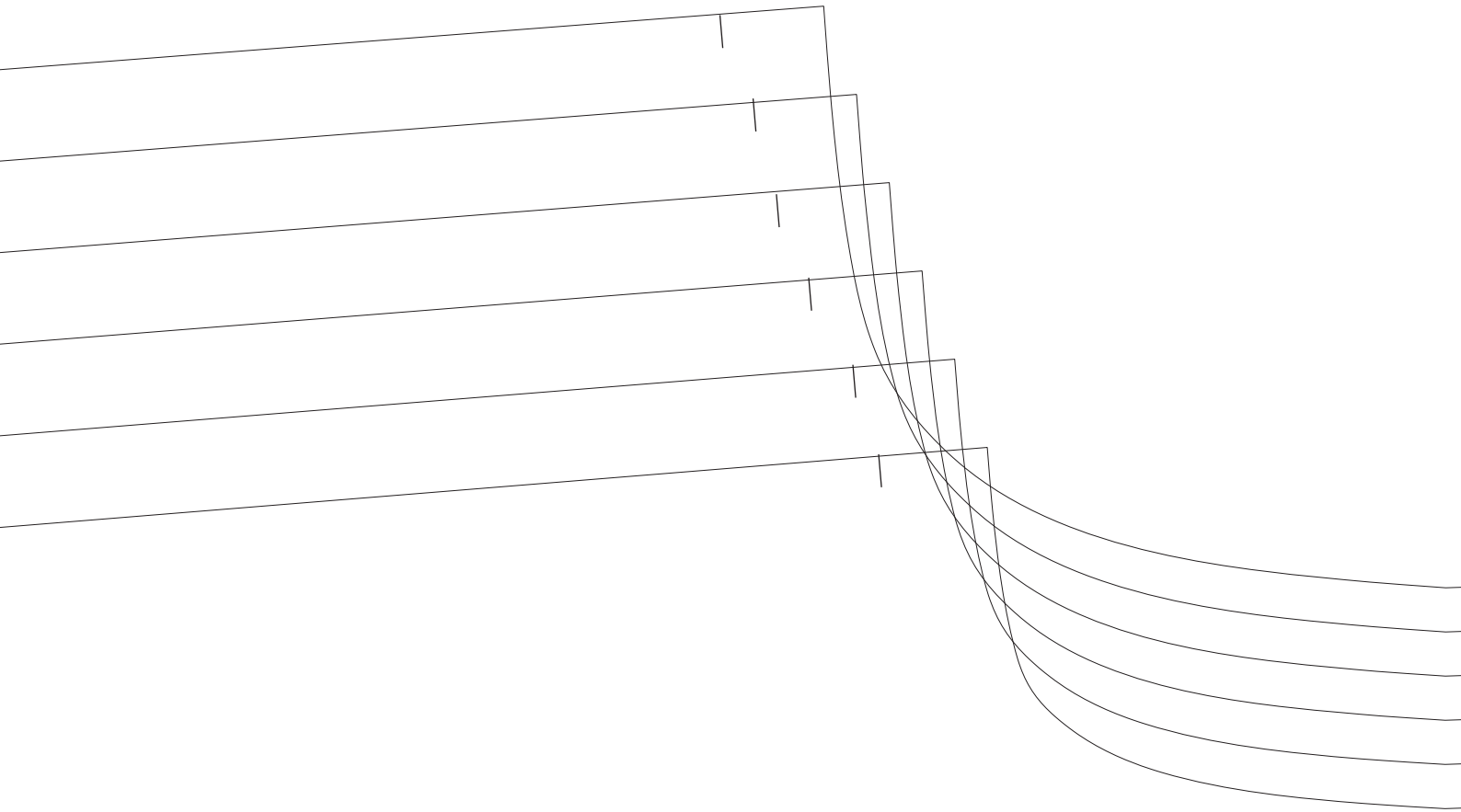
THE ALEXA DRESS
FRONT BODICE
CUT ONE ON FOLD

PATTERN REF:
#0004

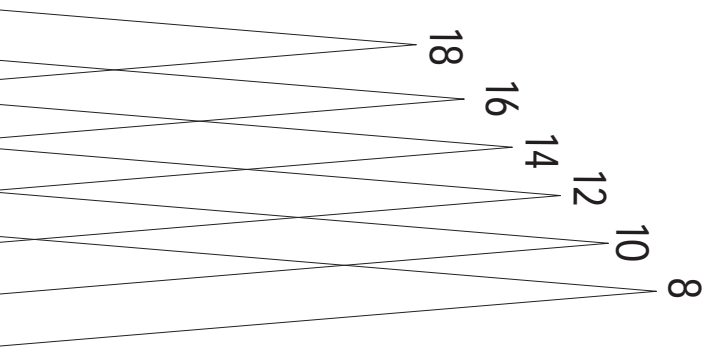


STRAIGHT GRAIN →



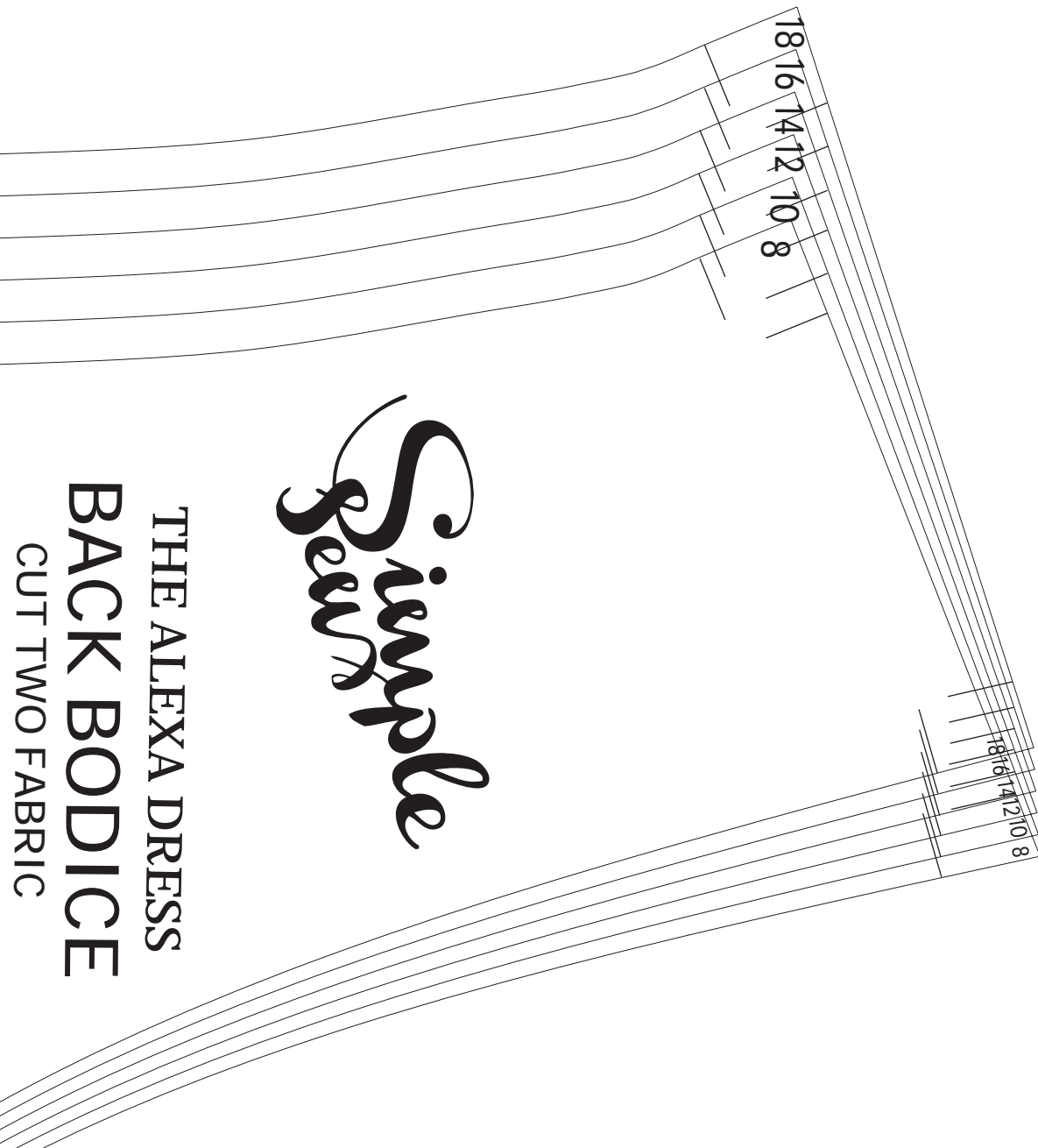


PATTERN REF:
#0004



← STRAIGHT GRAIN →

on neck



Simple
Sew

THE ALEXA DRESS

BACK BODICE

CUT TWO FABRIC

FACE ON FOLD

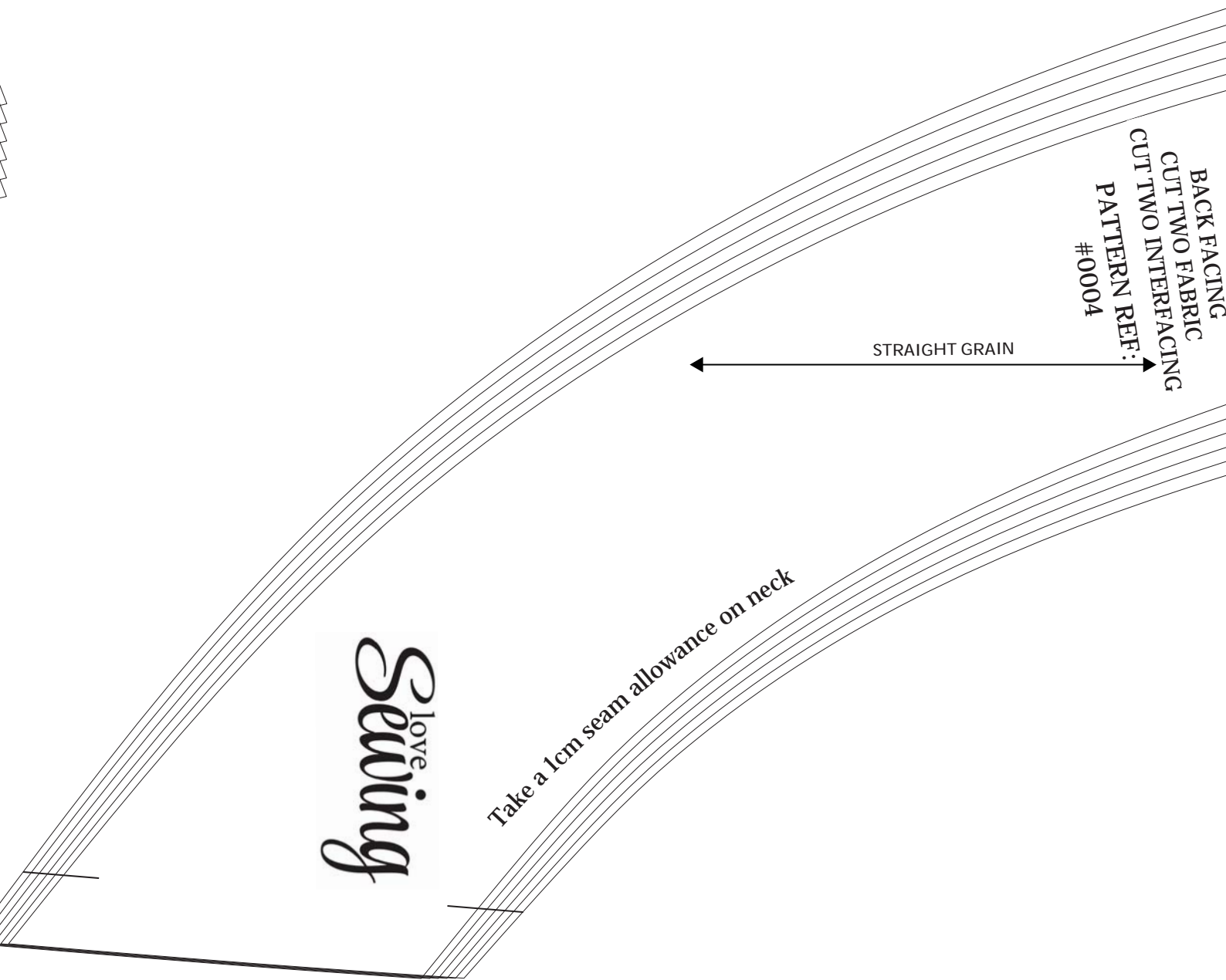
allowance on neck
8
10
12
14
16
18

BACK FACING
CUT TWO FABRIC
CUT TWO INTERFACING
PATTERN REF:
#0004

STRAIGHT GRAIN

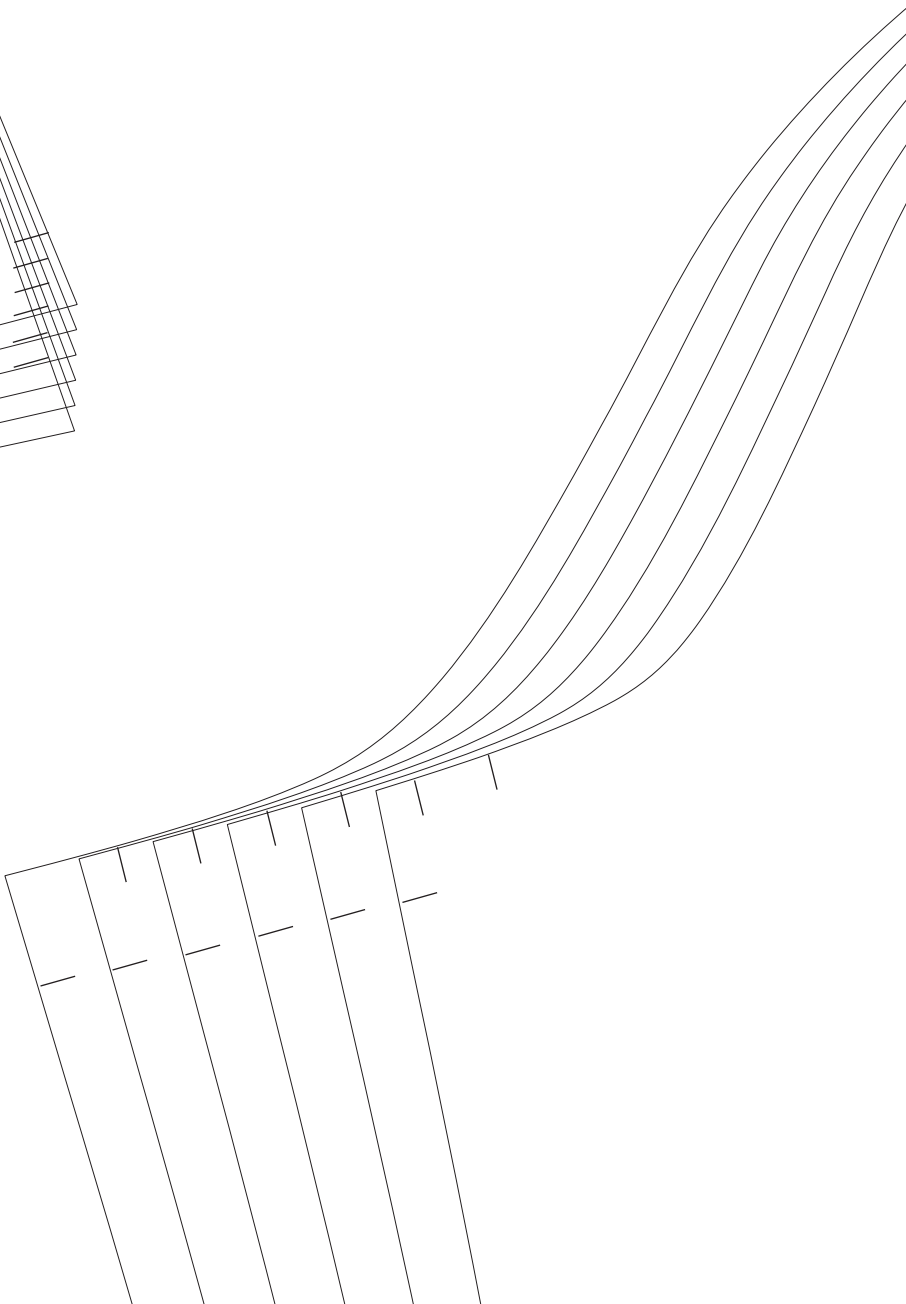
Take a 1cm seam allowance on neck

love
Sewing



love sewing

8
10
12
14
16
18



Take a 1cm seam allowance



Simple
Sew

GHT GRAIN

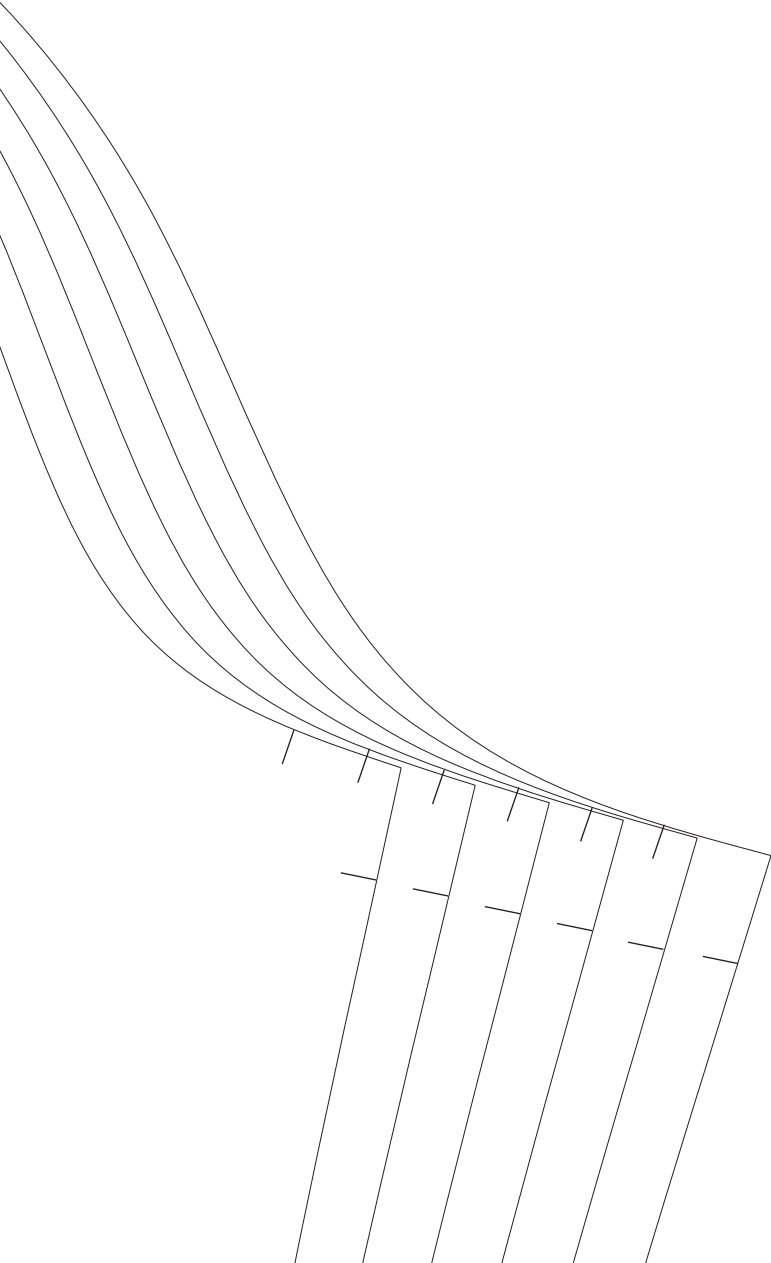
THE ALEXA DRESS

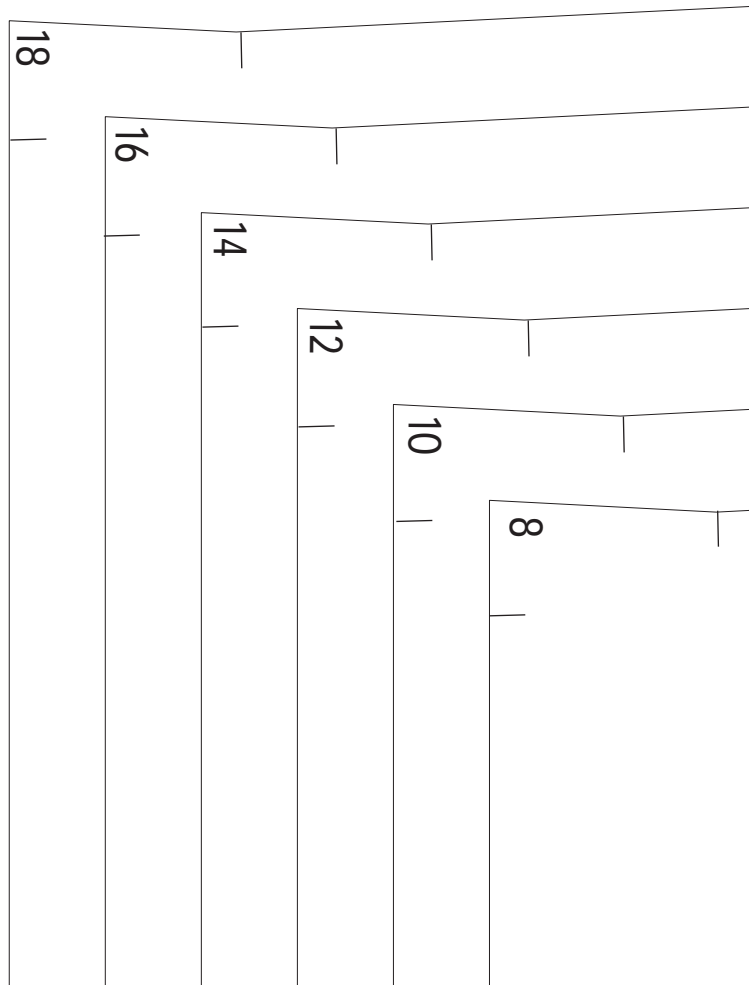
SLEEVE

CUT TWO FABRIC

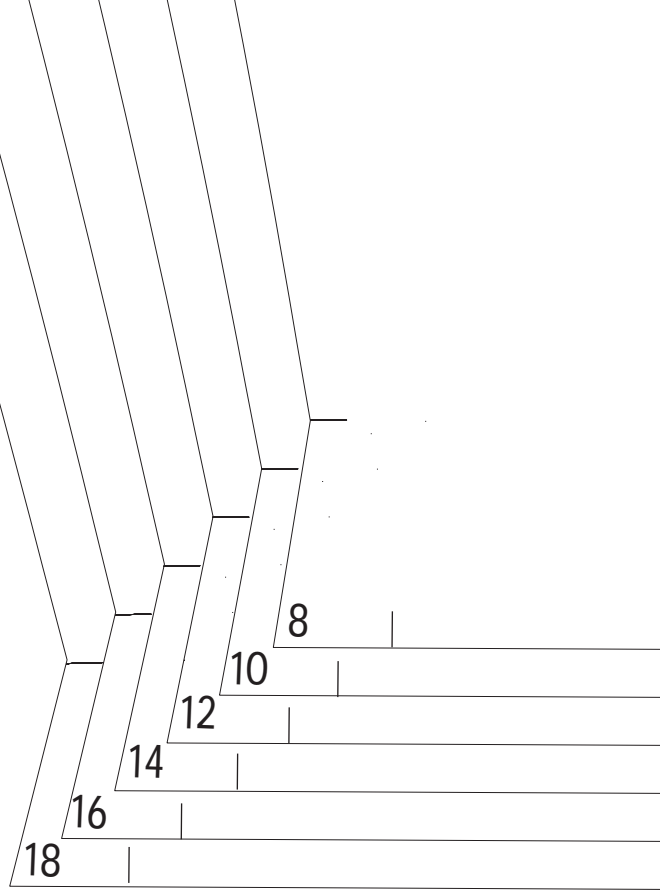
PATTERN REF:

#0004









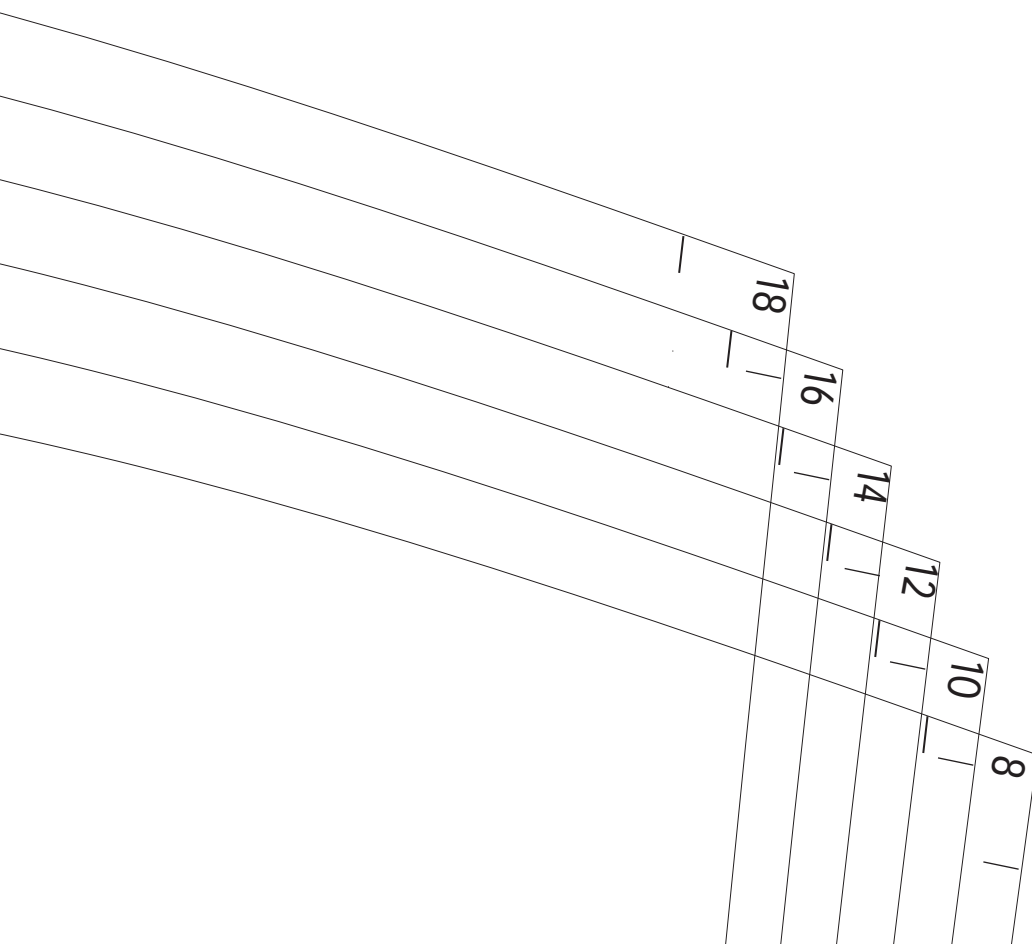
STRAI



love
Sewin

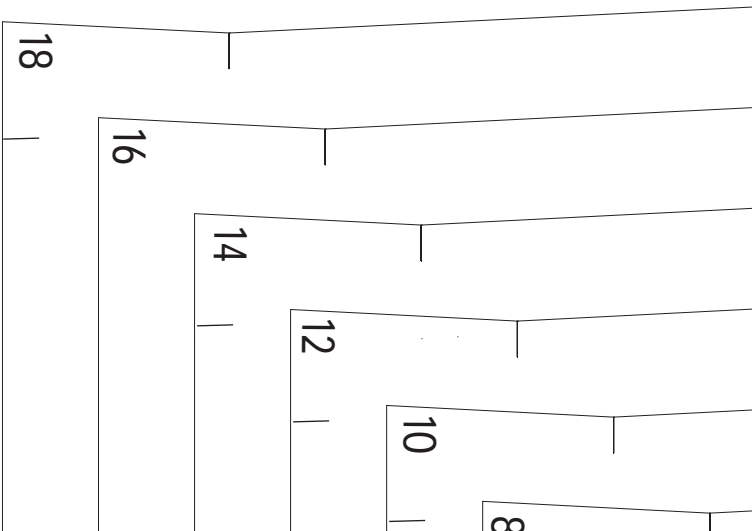
8
10
12
14
16
18

ig



Seung

8
10
12
14
16
18



CUT TWO FABRIC

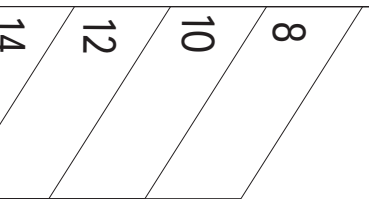
PATTERN REF:

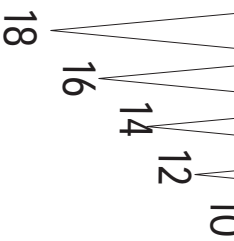
#0004

Stretch (if using stretch fabric)



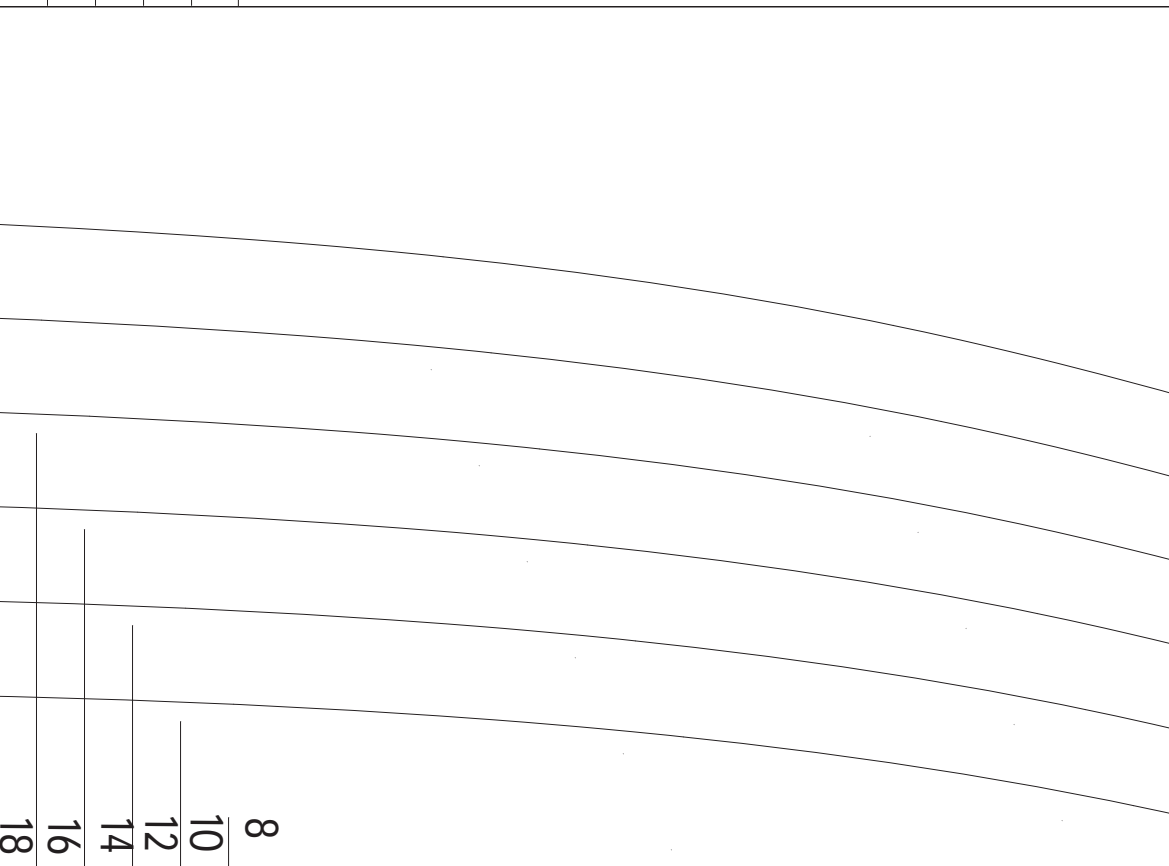
RIGHT GRAIN





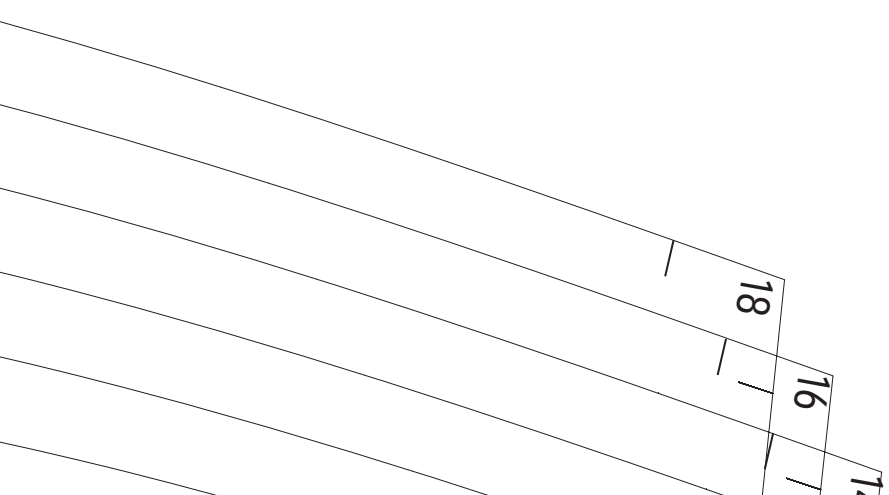
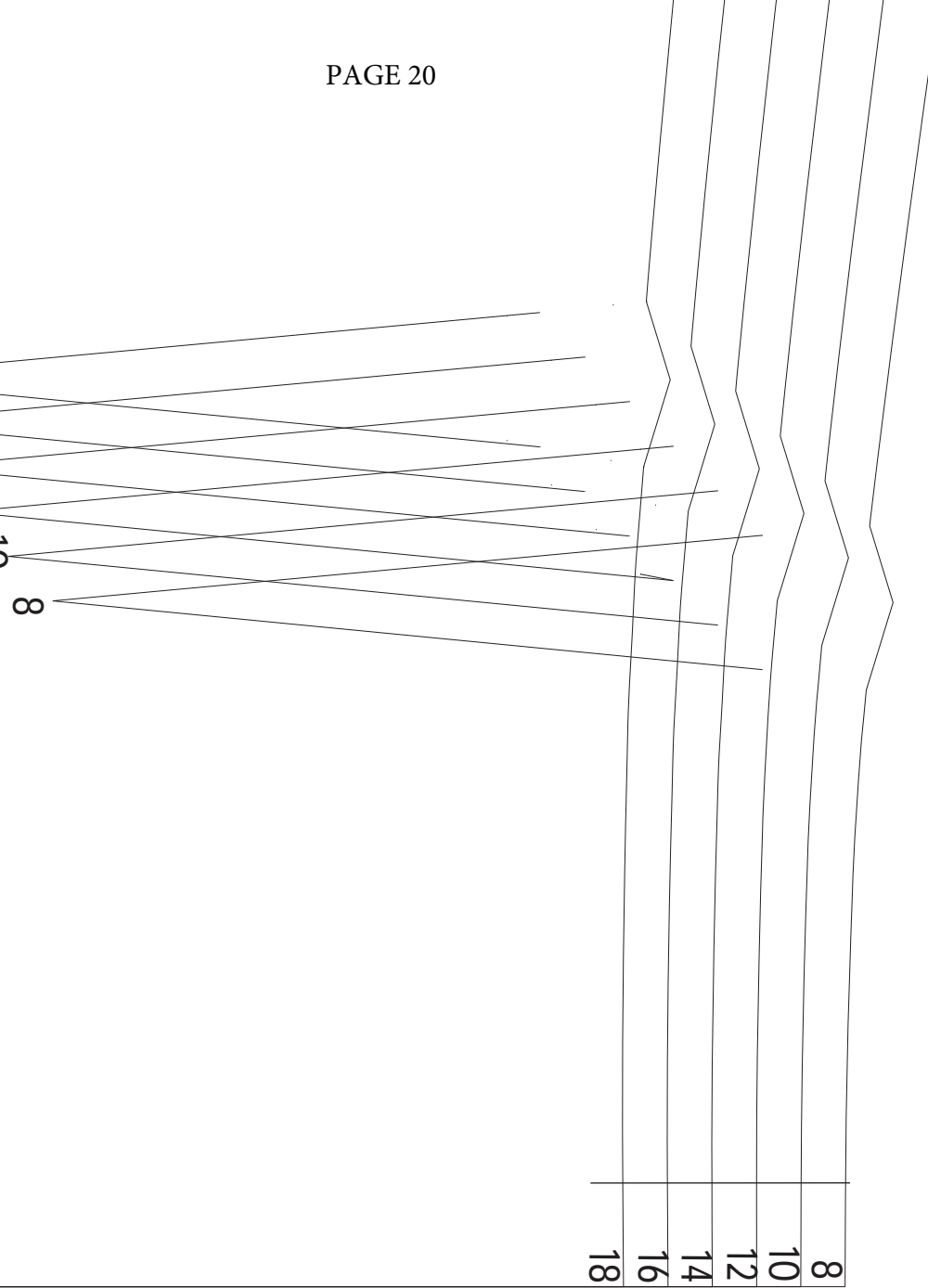
Simple Seam

LENGTHEN OR SHORTEN HERE



8
10
12
14
16
18

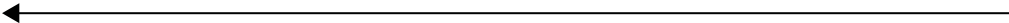
BACK SKIRT



Sewing

	8
	10
	12
	14
	16
	18

STR

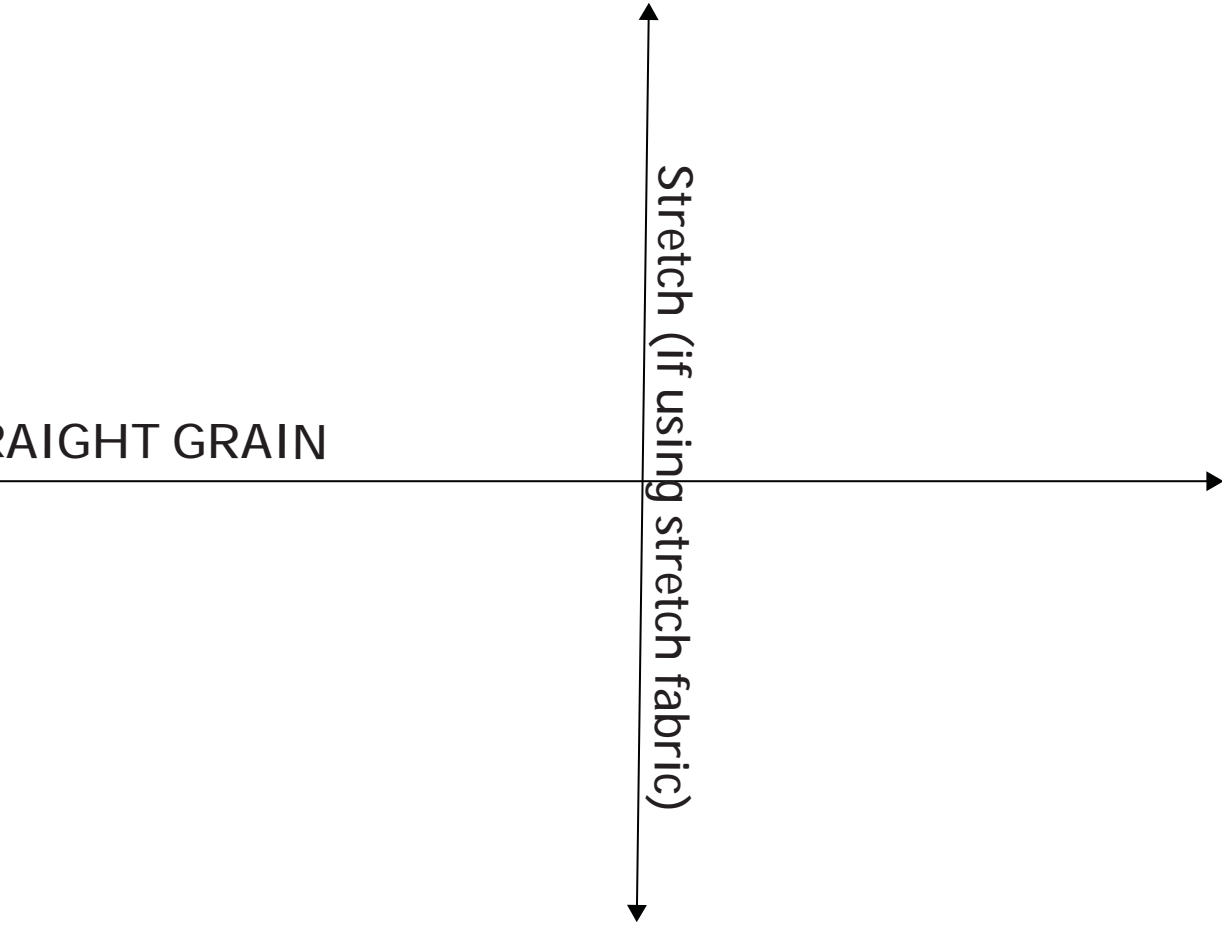


love •

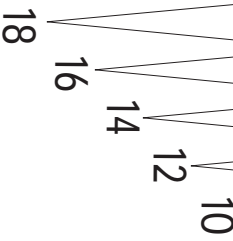


CUT ONE FABRIC ON FOLD

PATTERN REF:
#0004



PLACE ON FOLD



Simple Sew

LENGTHEN OR SHORTEN HERE



FRONT SKIRT

