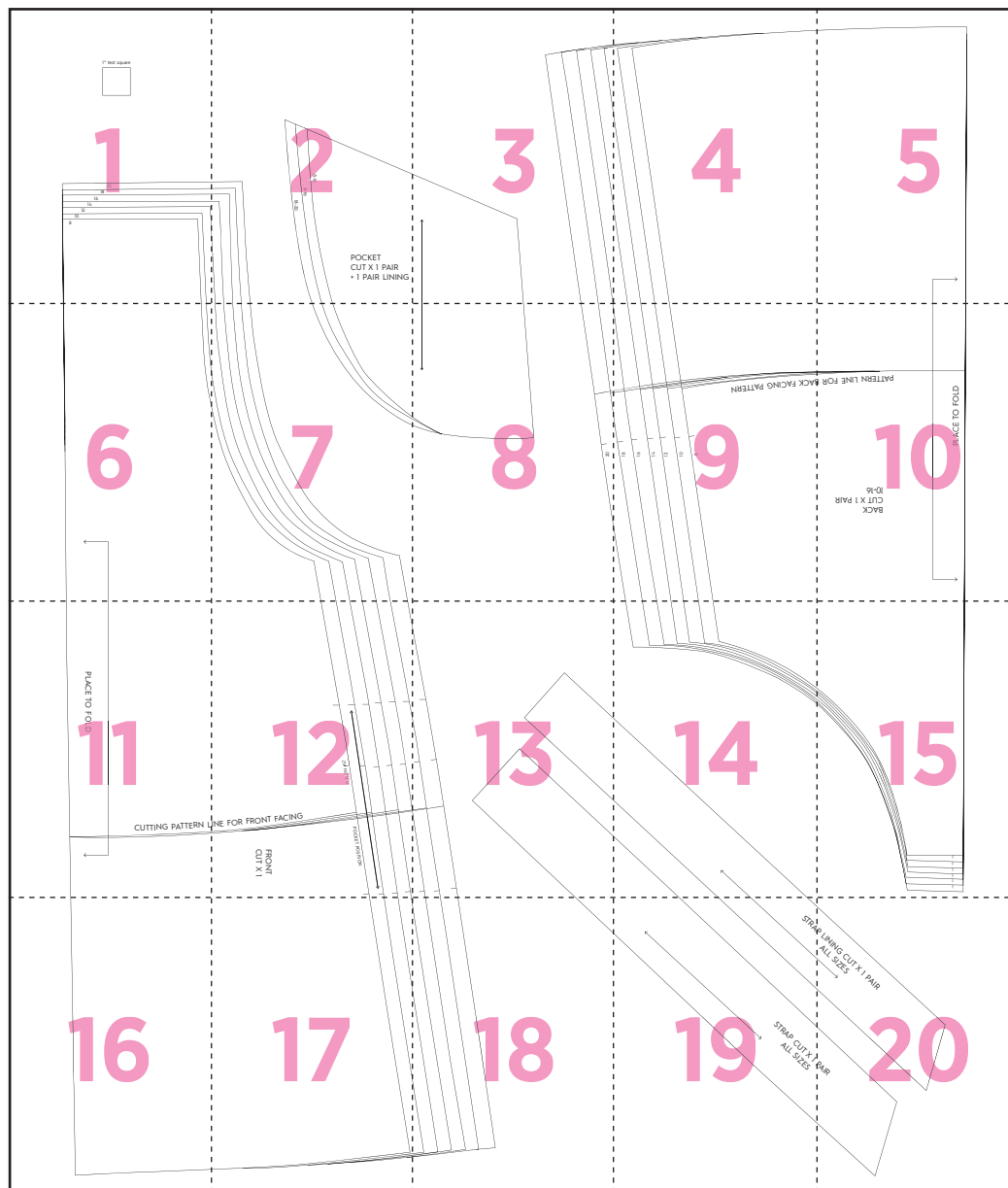


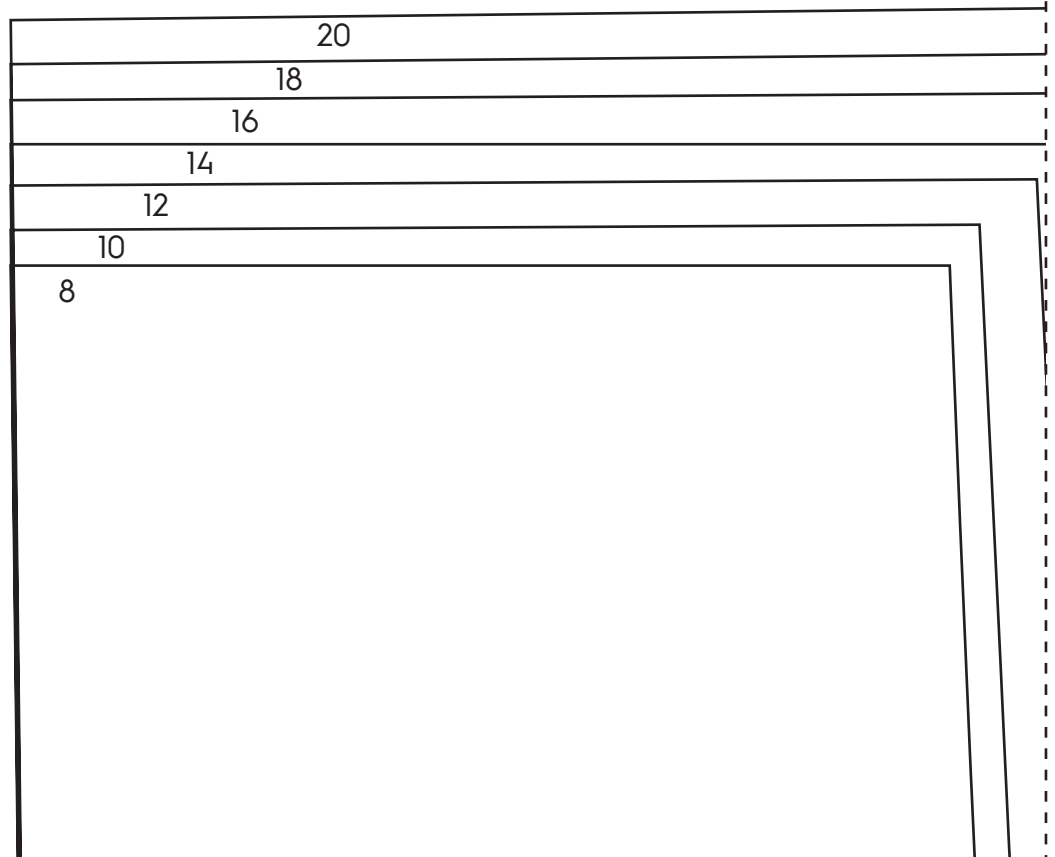
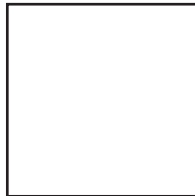
SEW IT Vintage

Dungaree dress

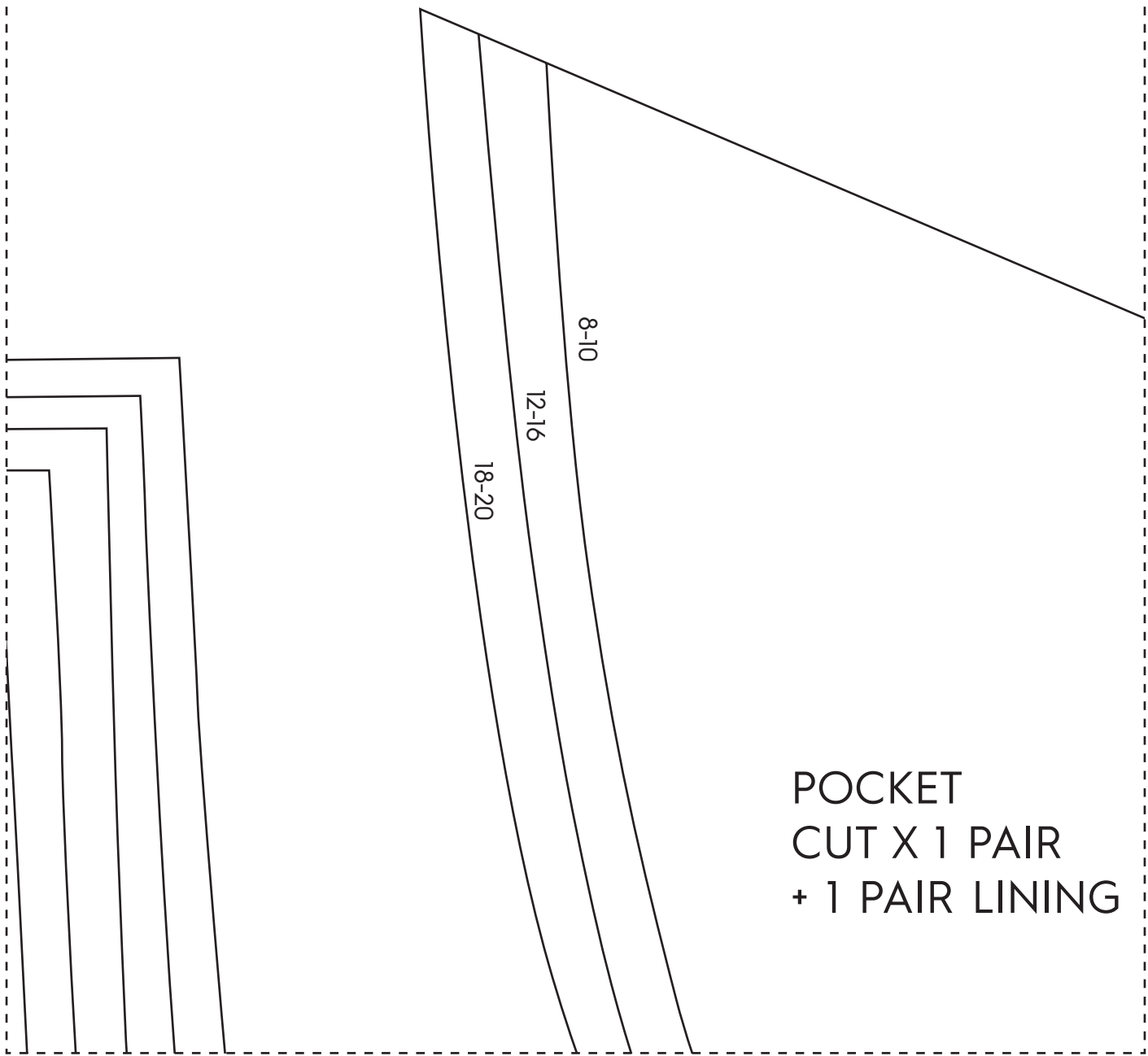


1

1" test square

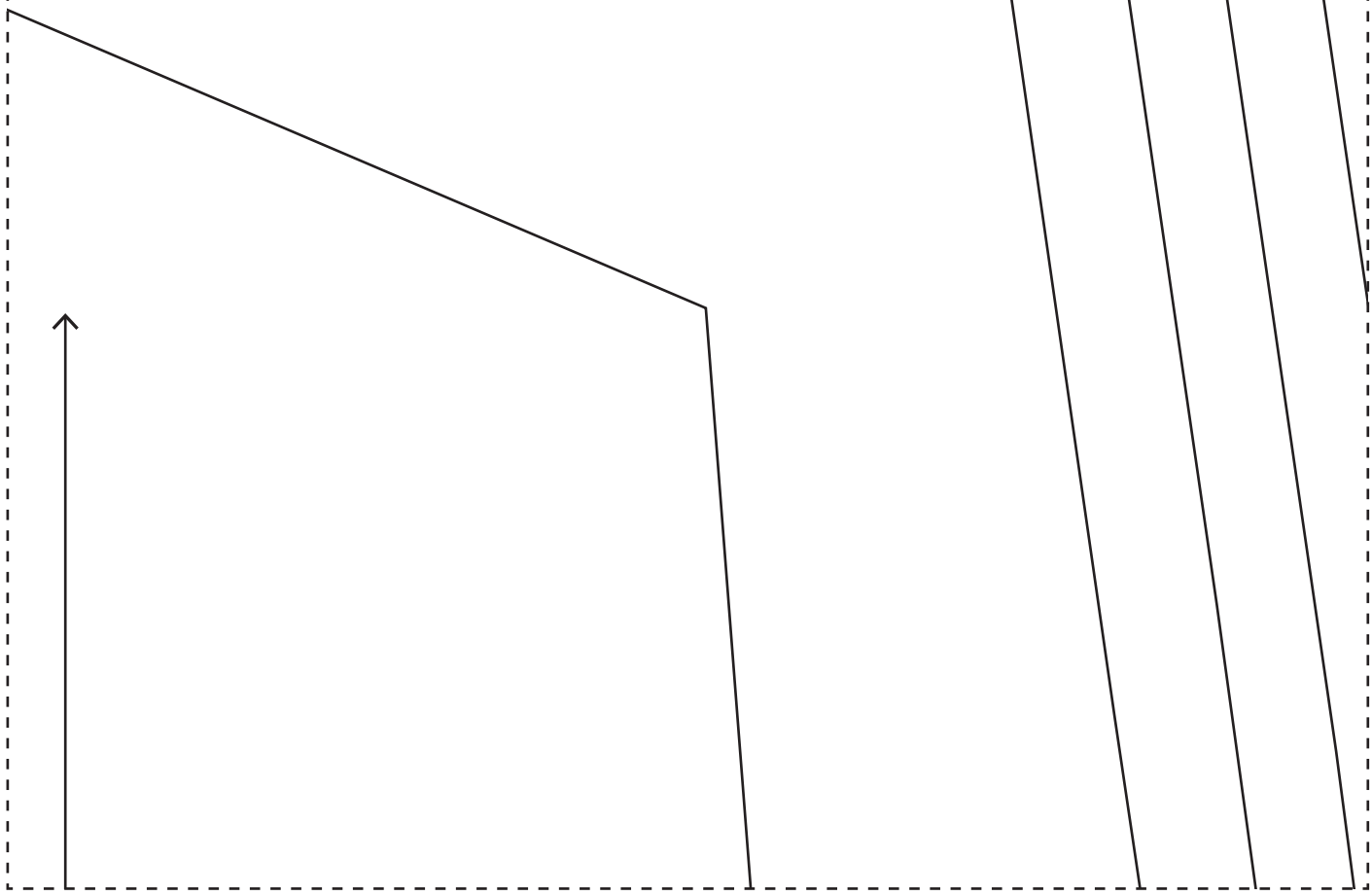
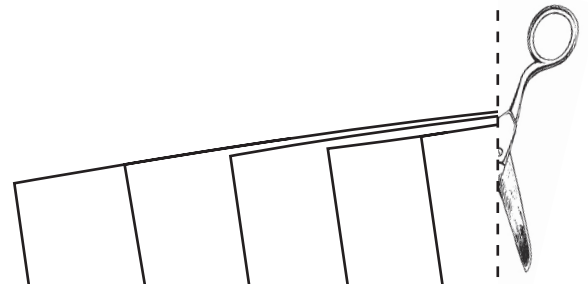


2

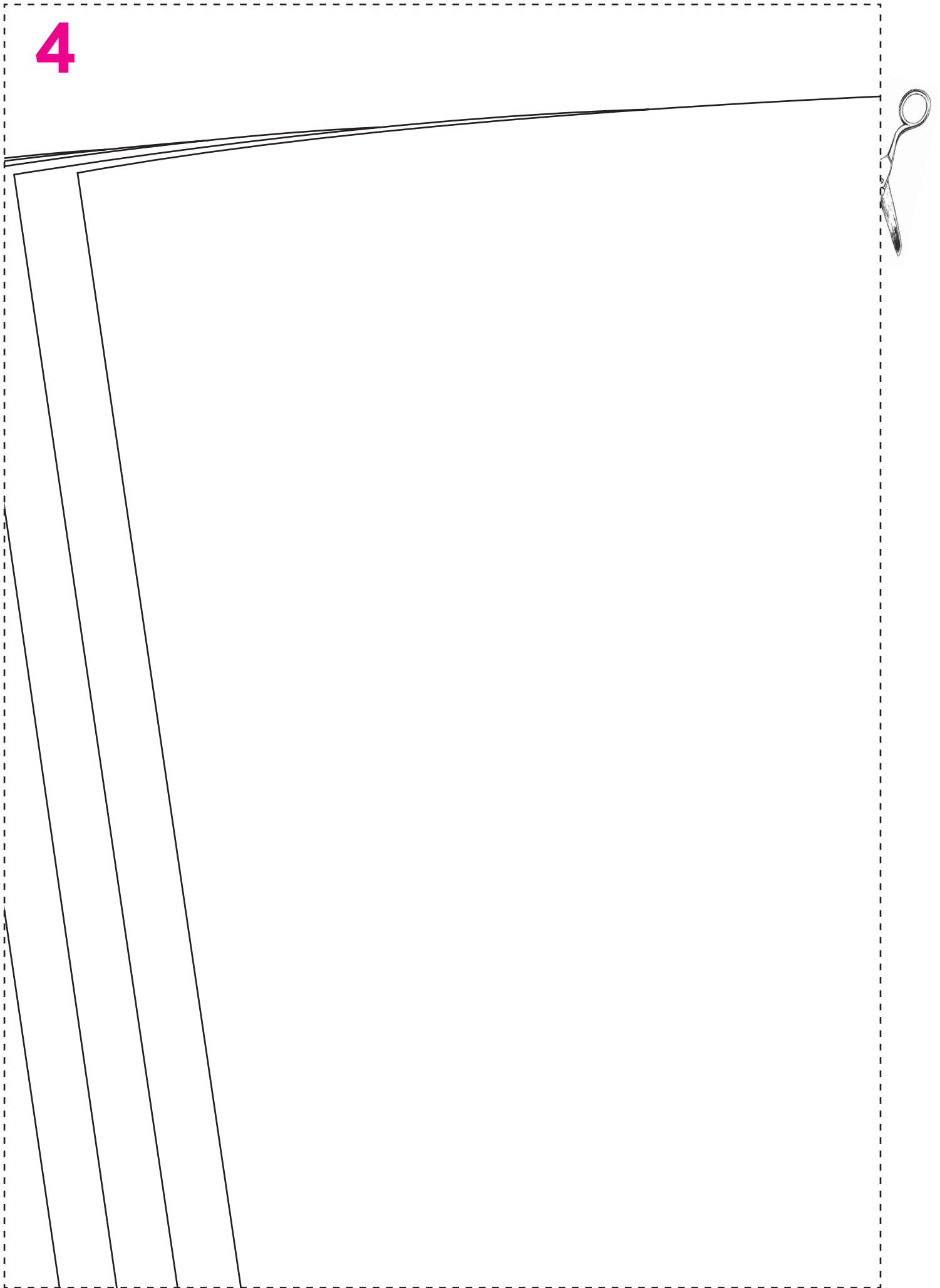


POCKET
CUT X 1 PAIR
+ 1 PAIR LINING

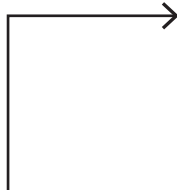
3



4



5



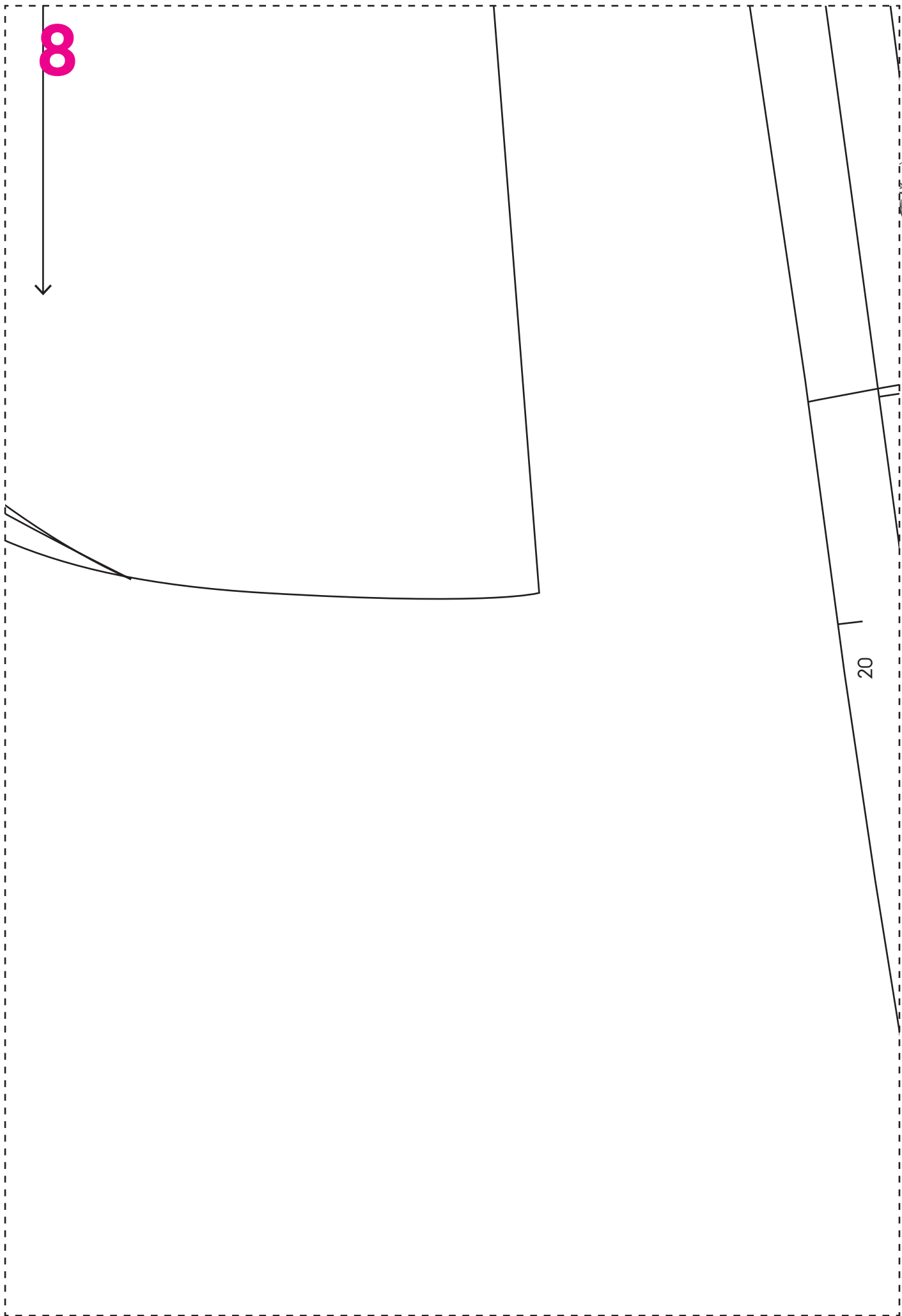
6



www.sewnowmag.co.uk

7





9

BACK FACING PATTERN

18
16
14
12
10
8



10

PATTERN LINE FOR E

BACK
CUT X 1 PAIR
10-16

PLACE TO FOLD



11

PLACE TO FOLD

CUTTING PATTERN L



12



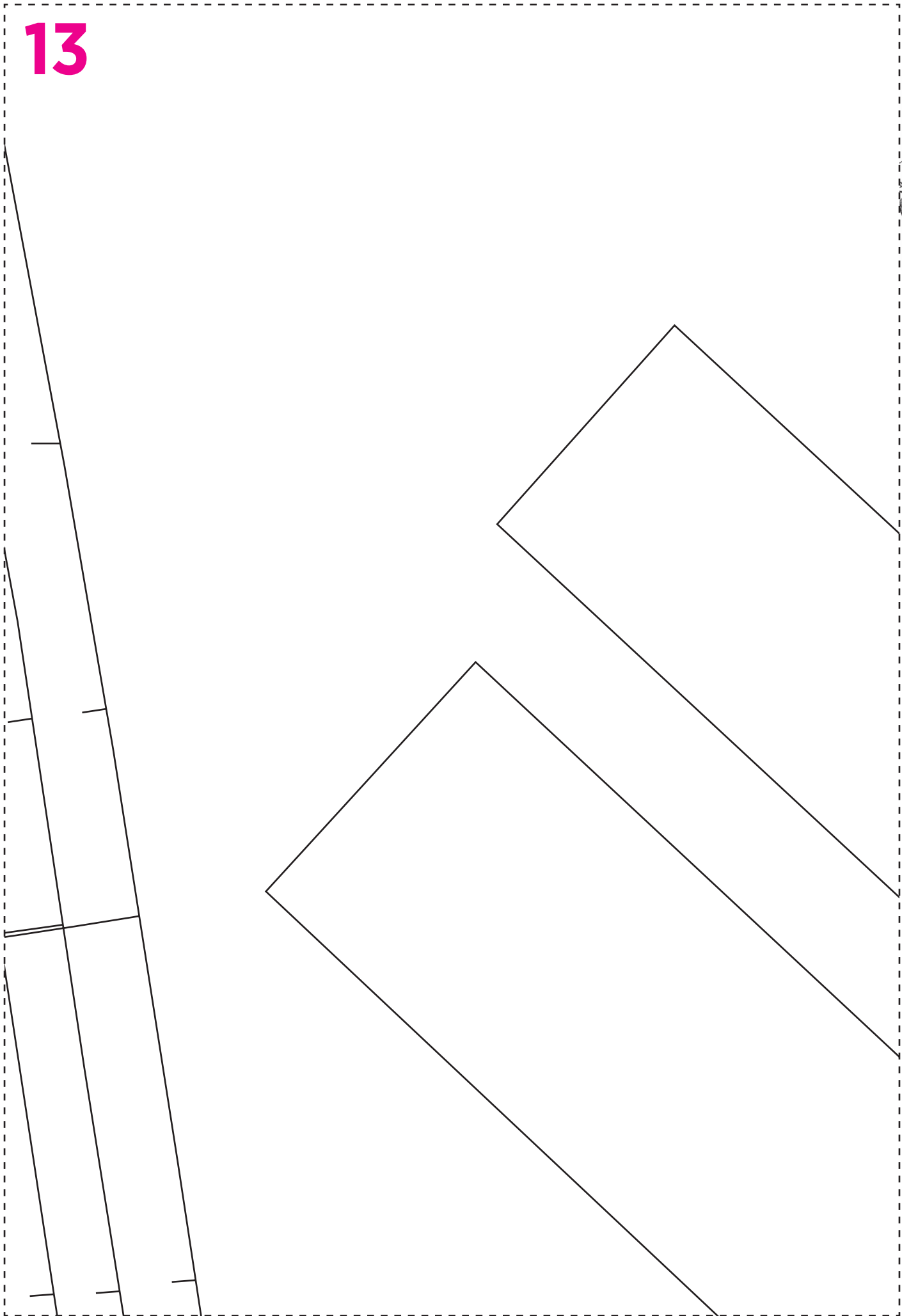
LINE FOR FRONT FACING

FRONT
CUT X 1

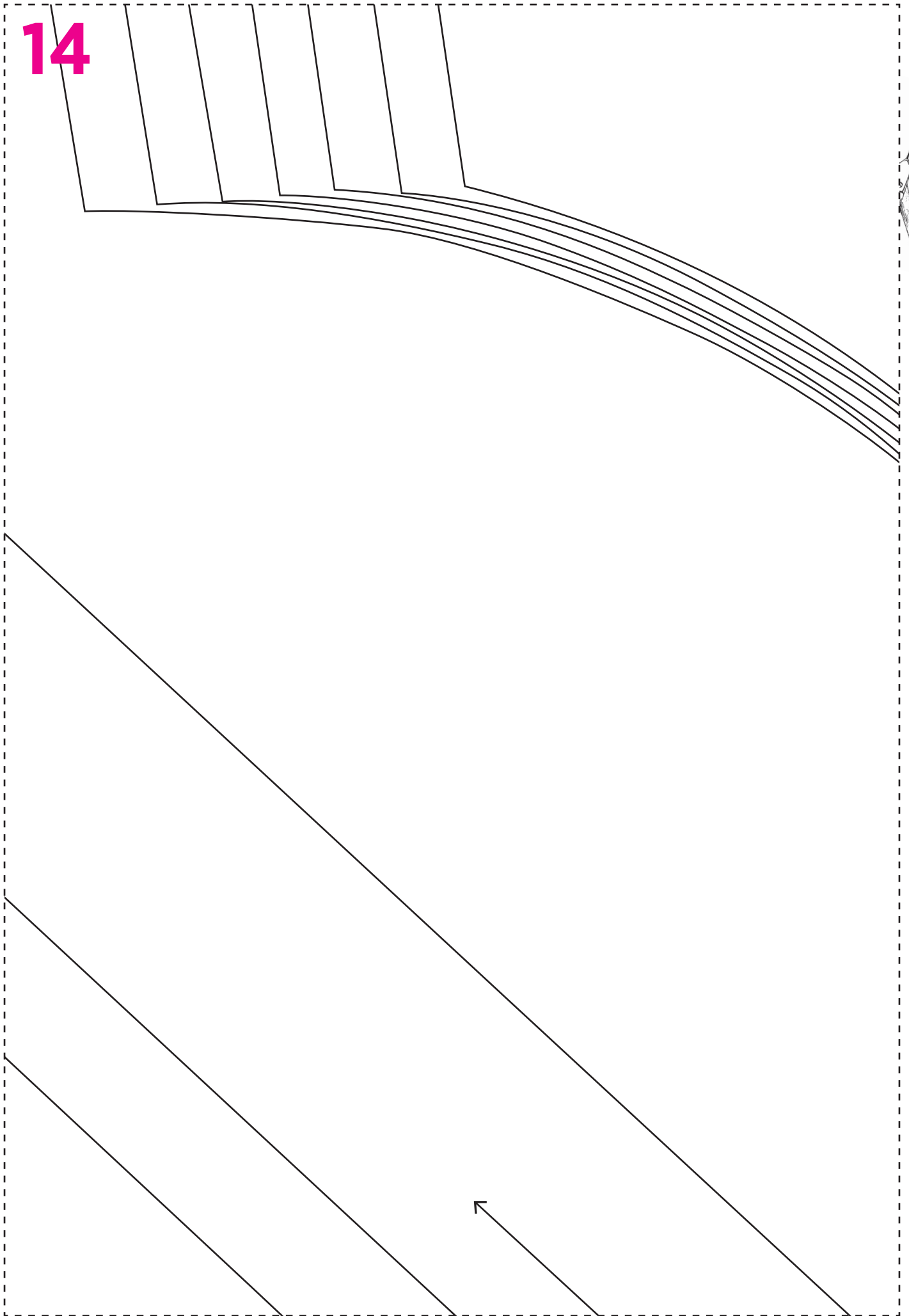
ZIP NOTCH

POCKET POSITION

13

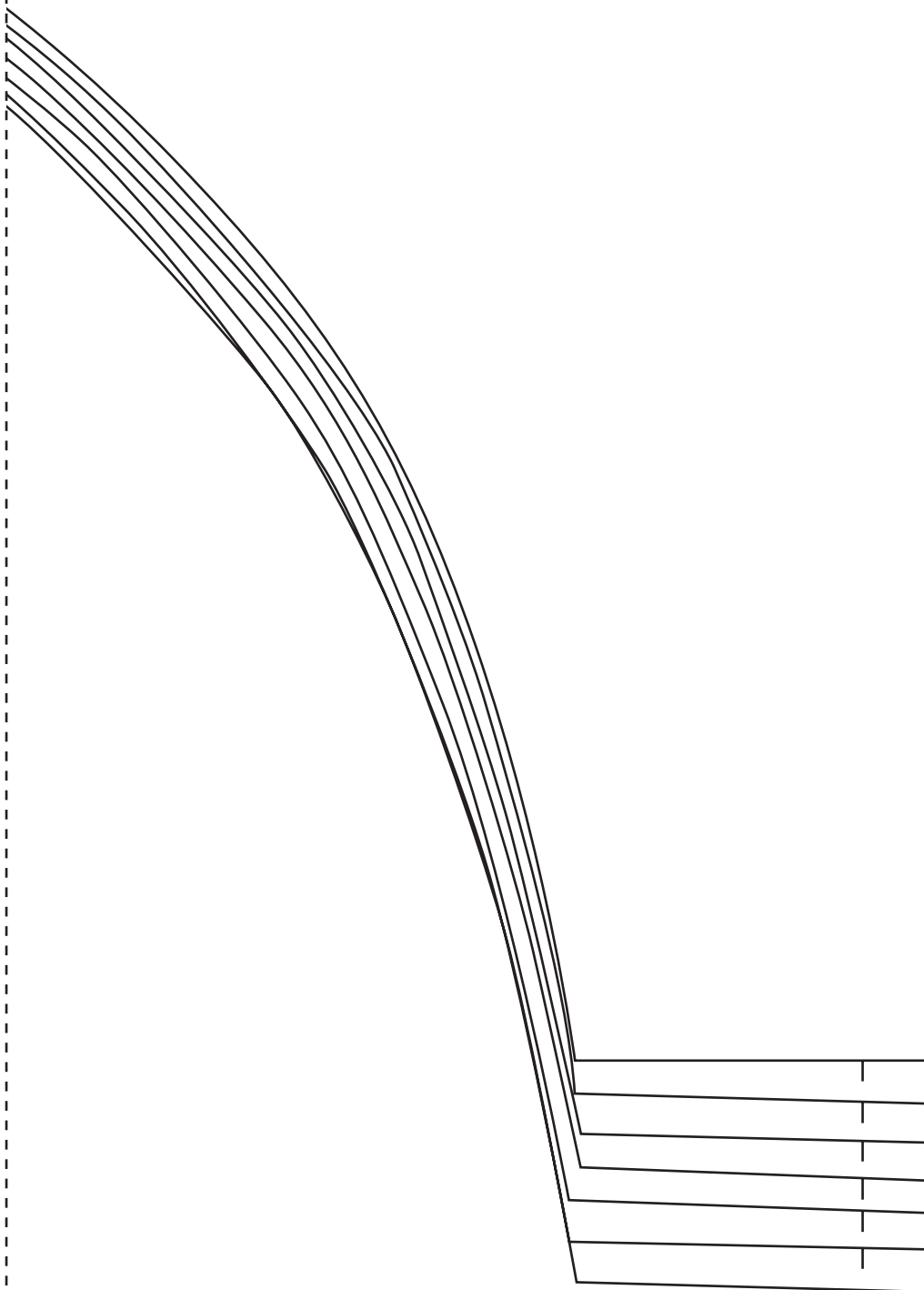


14



www.sewnowmag.co.uk

15



16



17



18



19

STRAP



STRAP CUT X 1
ALL SIZES

20

P LINING CUT X 1 PAIR
ALL SIZES

PAIR

