

Silk and sparkle WRAP



★ ★
INTERMEDIATE



100g LACE



KNIT IN...
weeks



Essentials

Yarn used
 Austermann Kid Silk
 3 balls in French navy (MC)
 £5.20 per ball from
www.woollymadlydeeply.com
 Austermann Palila
 1 ball in silver (CC)
 £4.25 per ball from
www.woollymadlydeeply.com

About the yarn
 Kid Silk: Lace; 225m per
 25g ball; 75% kid mohair,
 25% silk Palalia: Lace; 395m
 per 25g ball; 100% polyester

Tension
 Measured over 10cm
 in lace pattern



Needles used
 5mm straight, 30cm

*For a full list of abbreviations please
 see the glossary on page 95*

This pretty lace wrap is elevated to another level of glam with the addition of a single strand of super-sparkly thread

Palila has tiny sequins on a metallised thread, so it's lighter than lace and yet adds a pretty sparkle without the weight of traditional sparkly yarns. The Kid Silk knitted on its own gives a lovely halo and together with a bit of sparkle should make you the belle of the ball! Go for a dramatic contrast such as the French navy and silver shown, or how about a more delicate combination of ivory and gold for a wedding?

Start knitting...

With 5mm needles and using one strand of MC, cast on 48 sts using long tail cast on. Knit 1 row.

Next Row: K4, work Chart A to last 4 sts, k4.

This row sets pattern - 4 st garter stitch border on each side of chart pattern. Continue working in pattern as set until Rows 1-6 of Chart A have been worked three times total.

Then continue in pattern as set but begin working stripe pattern as follows:

- Work 18 rows using one strand each of MC and CC.
- Work 18 rows using one strand MC.
- Work 24 rows using one strand each of MC and CC.
- Work 24 rows using one strand of MC.
- Work 30 rows using one strand each of MC and CC.
- Work 30 rows using one strand of MC.
- Work 36 rows using one strand each

- of MC and CC.
- Work 36 rows using one strand of MC.
- Work 36 rows using one strand each of MC and CC.
- Work 36 rows using one strand of MC.
- Work 36 rows using one strand each of MC and CC.
- Work 30 rows using one strand of MC.
- Work 30 rows using one strand each of MC and CC.
- Work 24 rows using one strand MC.
- Work 24 rows using one strand each of MC and CC.
- Work 18 rows using one strand MC.
- Work 18 rows using one strand each of MC and CC.
- Work 18 rows using one strand MC.

Border

Knit two rows using one strand each MC and CC, on the WS row inc one stitch. 49 sts.

Work Rows 1-20 of Border chart - it is worked across whole row with no border sts.

Cast off loosely with a needle at least two sizes larger than your main needle to ensure a loose edge for blocking.

With right side facing and one strand each MC and CC, PU and k49 sts from the cast on edge and knit the 20 border rows either from the chart or written instructions. Cast off loosely as per the other border.

Finishing:

Weave in all ends. Gently wash and block to finished schematic measurements. leave to dry. ●

SPECIAL INSTRUCTIONS

Special instructions

Chart A

- Row 1 (RS):** [K1, yo, k2, ssk, p4, k2tog, k2, yo] 3 times, k1,
- Row 2 (WS):** P1, [p4, k4, p5] 3 times,
- Row 3:** [K2, yo, k2, ssk, p2, k2tog, k2, yo, k1] 3 times, k1,
- Row 4:** P1, [p5, k2, p6] 3 times,
- Row 5:** [K3, yo, k2, ssk, k2tog, k2, yo, k2] 3 times, k1,
- Row 6:** Purl.

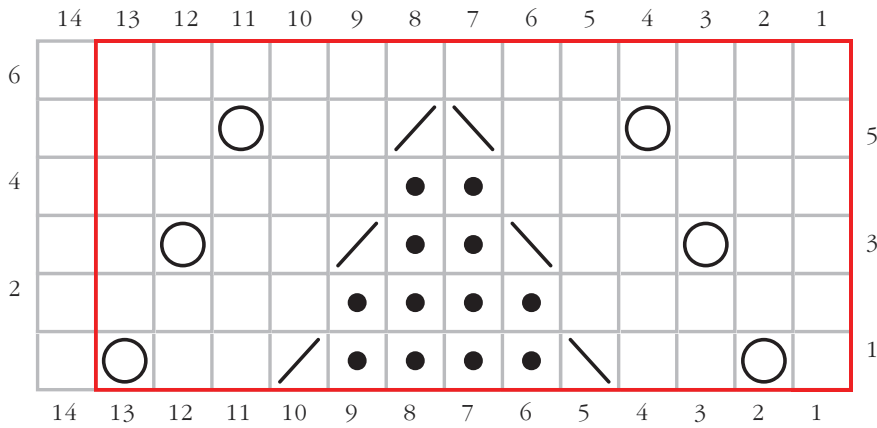
Border Chart

- Row 1 (RS):** K3, kfb, k2, [k3, kfb, k2] 4 times, k3, kfb, k3.
- Row 2 and all WS rows:** Purl.
- Row 3:** K2, k2tog, yo, ssk, k1, [k2, k2tog, yo, ssk, k1] 4 times, k2, k2tog, yo, ssk, k2.
- Row 5:** K1, k2tog, yo, kfb, yo, ssk, [k1, k2tog, yo, kfb, yo, ssk] 4 times, k1, k2tog, yo, kfb, yo, ssk, k1.
- Row 7:** [K2tog, yo] twice, ssk, yo, [sk2p, yo, k2tog, yo, ssk, yo] 4 times, sk2p, yo, k2tog, [yo, ssk] twice.
- Row 9:** K1, k2tog, yo, kfb, yo, ssk, [k1, k2tog, yo, kfb, yo, ssk] 4 times, k1, k2tog, yo, kfb, yo, ssk, k1.
- Row 11:** [K2tog, yo] twice, ssk, yo, [sk2p, yo, k2tog, yo, ssk, yo] 4

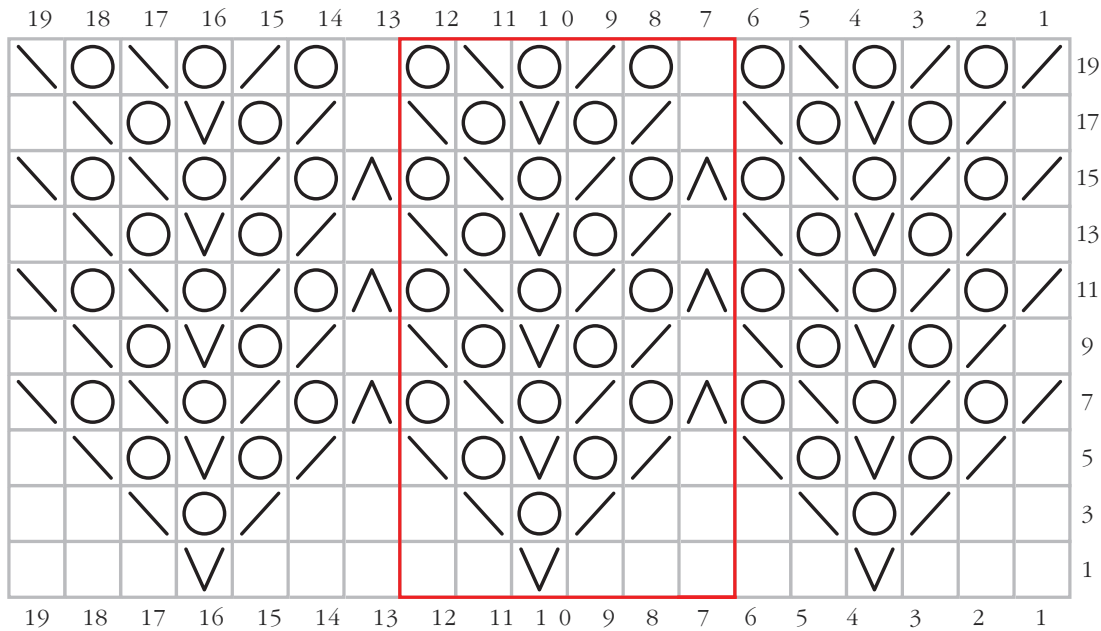
times, sk2p, yo, k2tog, [yo, ssk] twice.

- Row 13:** K1, k2tog, yo, kfb, yo, ssk, [k1, k2tog, yo, kfb, yo, ssk] 4 times, k1, k2tog, yo, kfb, yo, ssk, k1.
- Row 15:** [K2tog, yo] twice, ssk, yo, [sk2p, yo, k2tog, yo, ssk, yo] 4 times, sk2p, yo, k2tog, [yo, ssk] twice.
- Row 17:** K1, k2tog, yo, kfb, yo, ssk, [k1, k2tog, yo, kfb, yo, ssk] 4 times, k1, k2tog, yo, kfb, yo, ssk, k1.
- Row 19:** [K2tog, yo] twice, ssk, yo, [k1, yo, k2tog, yo, ssk, yo] 4 times, k1, yo, k2tog, [yo, ssk] twice.
- Row 20:** Purl.

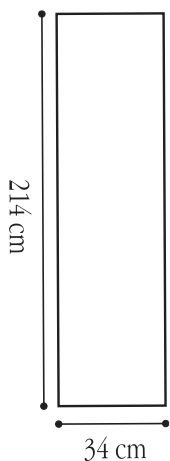
CHART A











BORDER CHART



SCHEMATIC



KEY

	RS: knit WS: purl		RS: ssk WS: p2togtbl
	RS: purl WS: knit		yo
	RS: kfb WS: pfb		sk2p
	RS: k2tog RS: p2tog		Pattern Repeat

Designed by

Lorraine Birchall



I love a dramatic wrap to go with my little black dress, something of a statement piece to draw the eye upward and add a bit of glamour to a simple outfit. I liked the idea of stranding yarns together and chose kid silk to go with Palila