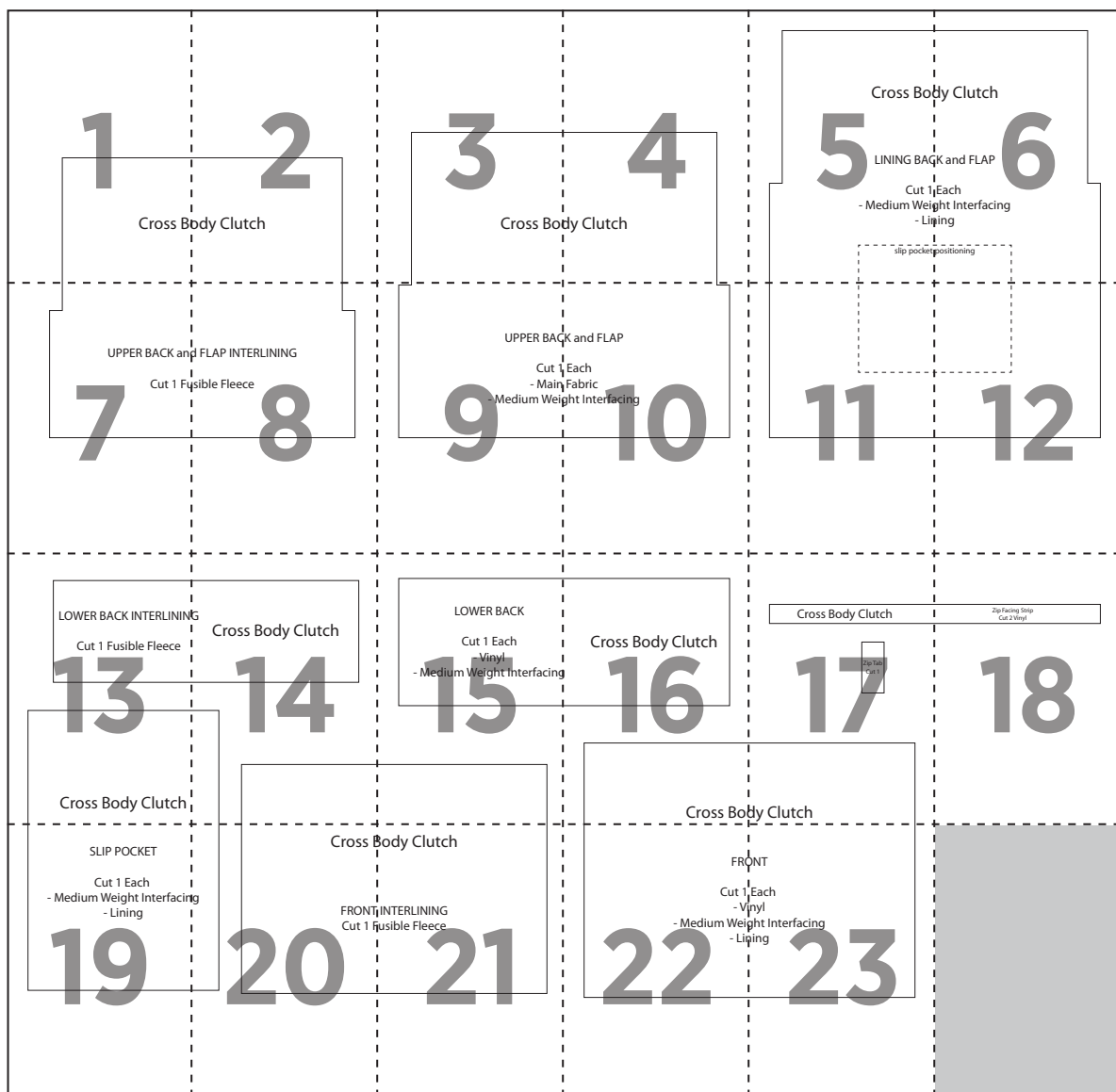


Fly away clutch



1



Cross Bo

2



body Clutch

3



Cross Bod

4



dy Clutch

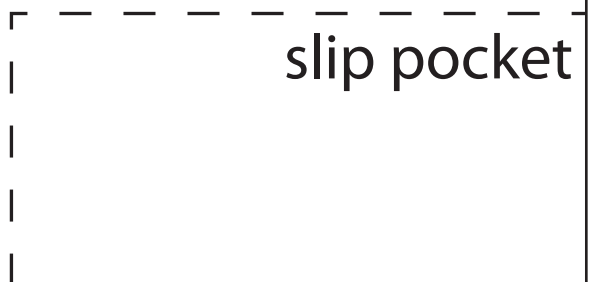
5



Cross Bod

LINING BACK

- Cut 1
- Medium Weig
- Lin





dy Clutch

K and FLAP

Each
ght Interfacing
ning

positioning

7



UPPER BACK and

Cut 1 Fu

8



FLAP INTERLINING

sible Fleece

9



UPPER BACK

- Cut 1
- Main
- Medium Weig

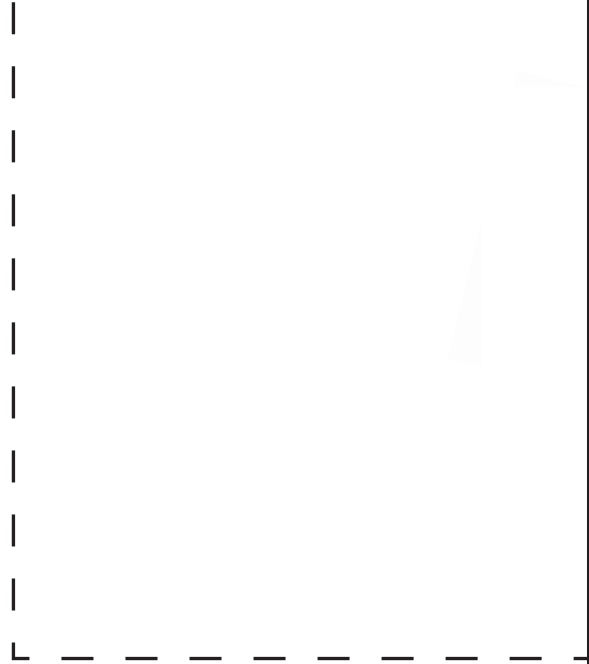
10

K and FLAP

Each
Fabric
ght Interfacing



11



12



13

LOWER BACK INTERLINING

Cut 1 Fusible Fleece



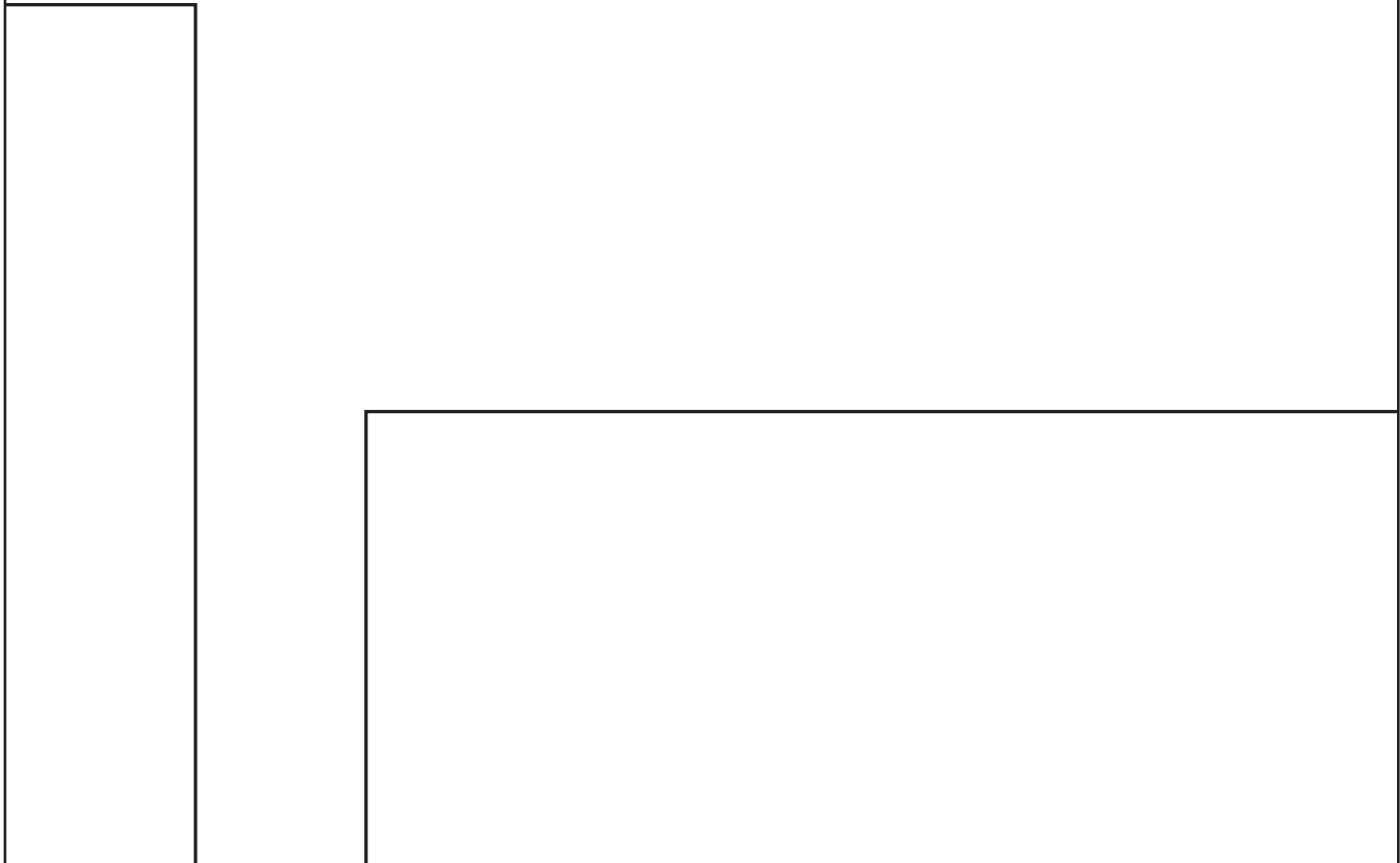
Cross Body Clutch

14



G

Cross Body Clutch



15



LOWER BACK

Cut 1 Each

- Vinyl

- Medium Weight Interfacing



Cross Body Clutch

Cross Bod



Cross Body Clutch

Zip Tab
Cut 1

dy Clutch

18

Zip Facing Strip
Cut 2 Vinyl



19

SLIP POCKET

- Cut 1 Each
- Medium Weight Interfacing
 - Lining



20

g

Cross B



FRONT
Cut 1 F

21 Body Clutch

INTERLINING
visible Fleece



FRC



Cut 1

- Vi

- Medium Weig

- Lin

23

CONT

Each
nyl
ght Interfacing
ning

