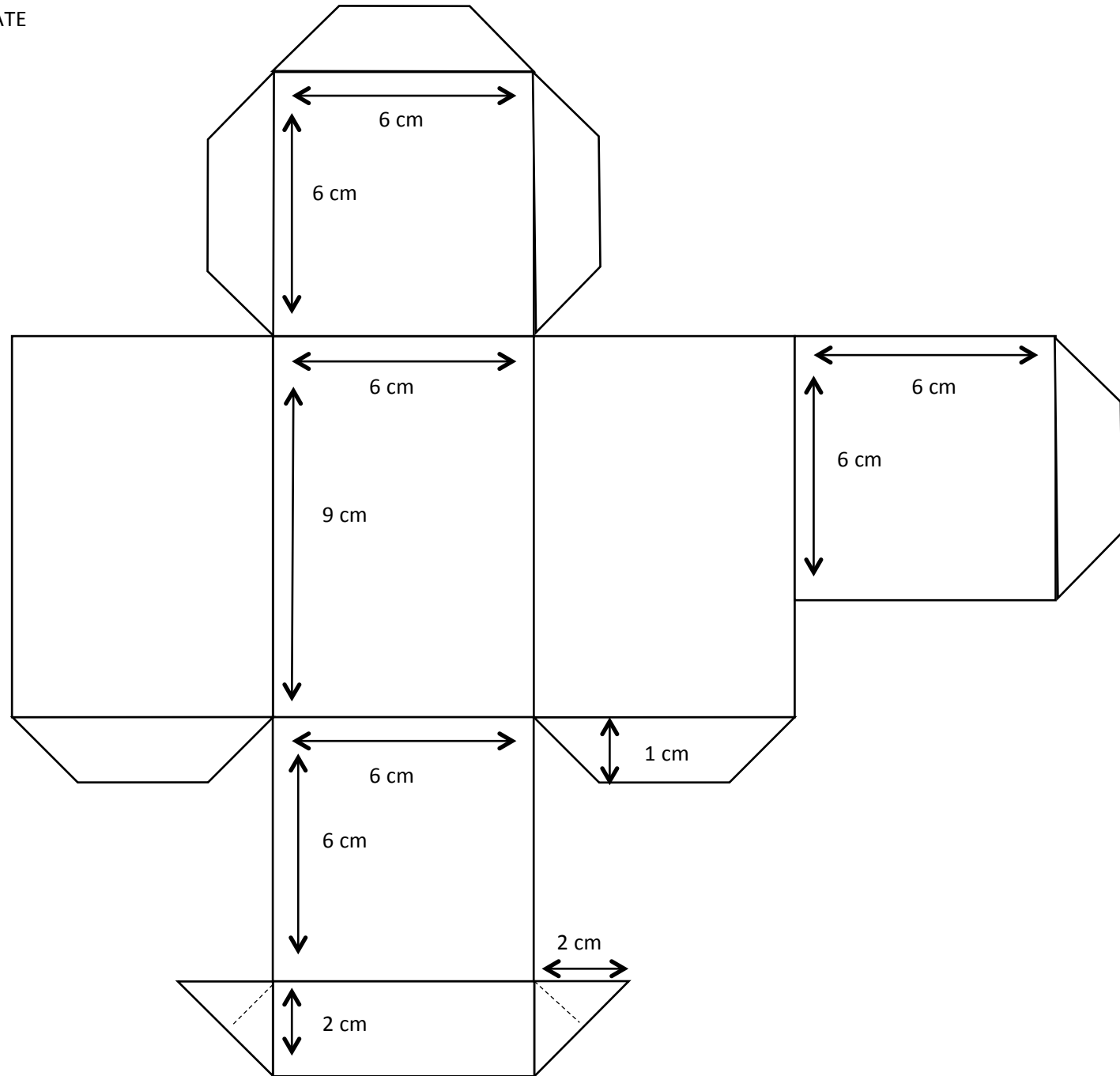
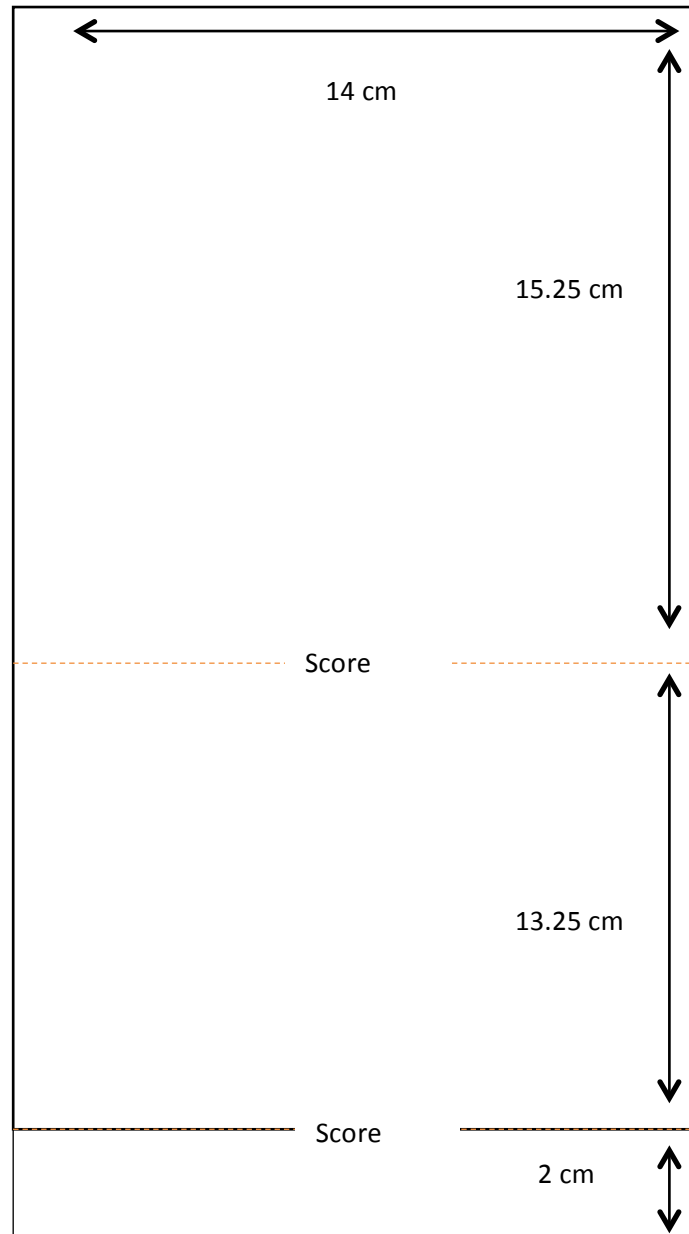


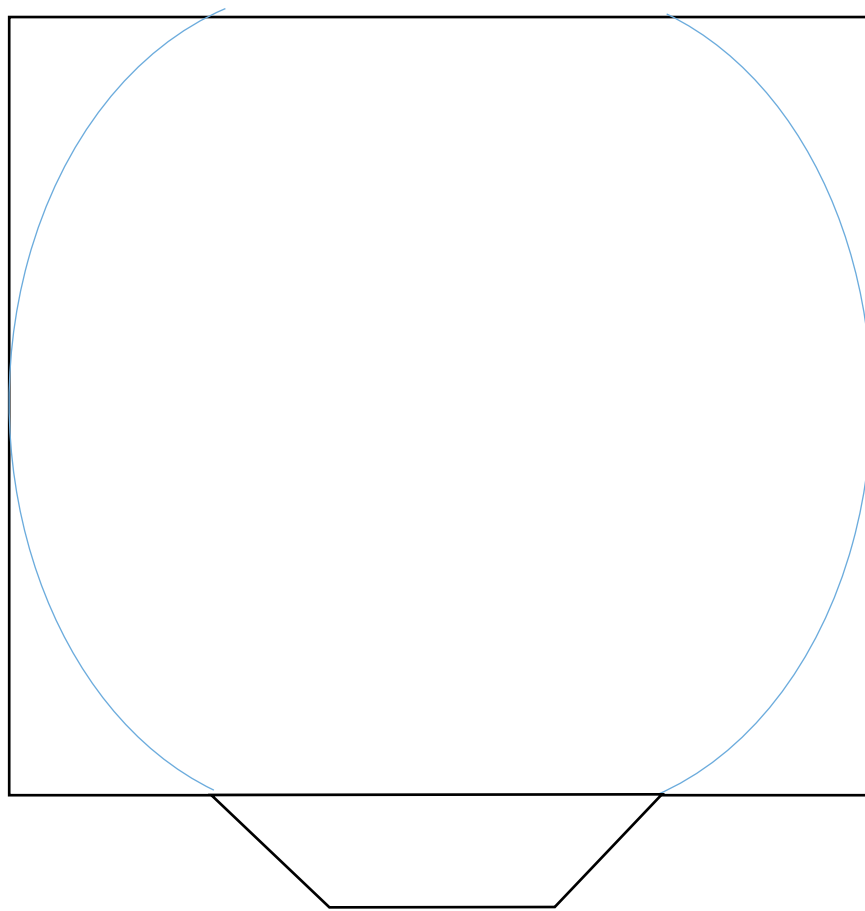
CANDY DISPENSER TEMPLATE



PILLOW BOX TEMPLATE

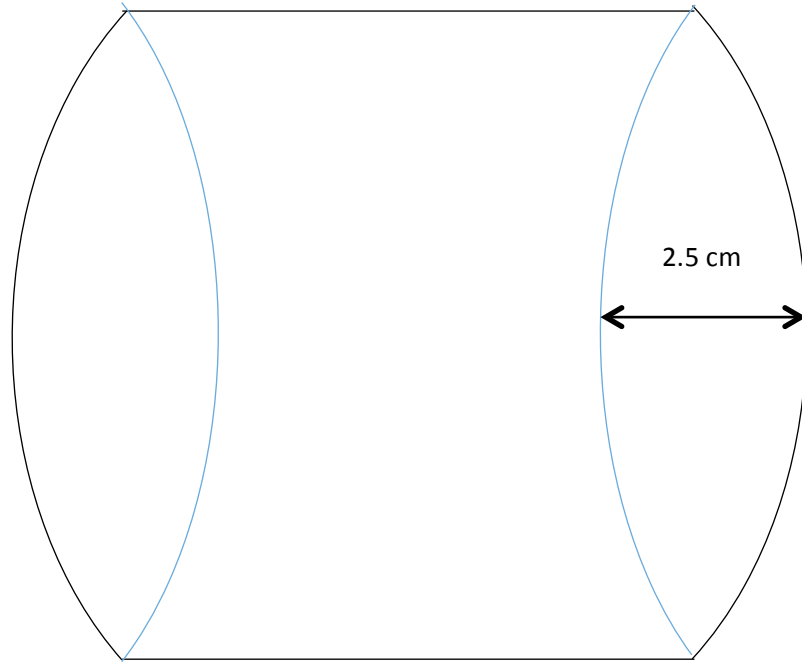


Fold 2 cm flap inwards. Fold top panel over.



Use a plate/circle to draw pillow sides, and cut away.

Unfold flap and cut sides at an angle. Fold back in.



Measure in 2.5 cm on either side. Draw and score the other side of the pillow flap.

Fold in pillow flaps and assemble box, adhering the main flap to keep in place.